



# County Lines

DEBORAH UDAKIS CONSULTANCY LTD

# Defining County Lines

**County Lines is a term used when drug gangs from big cities expand their operations to smaller towns, often using violence to drive out local dealers and exploiting children and vulnerable people to sell drugs. These dealers will use dedicated mobile phone lines, known as 'deal lines', to take orders from drug users. Heroin, cocaine and crack cocaine are the most common drugs being supplied and ordered. In most instances, the users or customers will live in a different area to where the dealers and networks are based, so drug runners are needed to transport the drugs and collect payment.**

Children as young as 7 are being put in danger by criminals who are taking advantage of how innocent and inexperienced these young people are. Any child can be exploited, no matter their background.



**DAN, 16, HAS BEEN STABBED AND FORCED TO SELL DRUGS MILES AWAY FROM HOME.**

**FIND OUT MORE ABOUT #COUNTYLINES**

**NCA**  
National Crime Agency

[NATIONALCRIMEAGENCY.GOV.UK/COUNTYLINES](https://www.nationalcrimeagency.gov.uk/countylines)

Criminal exploitation is also known as 'county lines' and is when gangs and organised crime networks groom and exploit children to sell drugs. Often these children are made to travel across counties, and they use dedicated mobile phone 'lines' to supply drugs.

## Action on county line drug gangs



**New powers** would allow the police to shut down mobile phone lines



'County lines' are where urban gangs are supplying illegal drugs in suburban areas, market or coastal towns



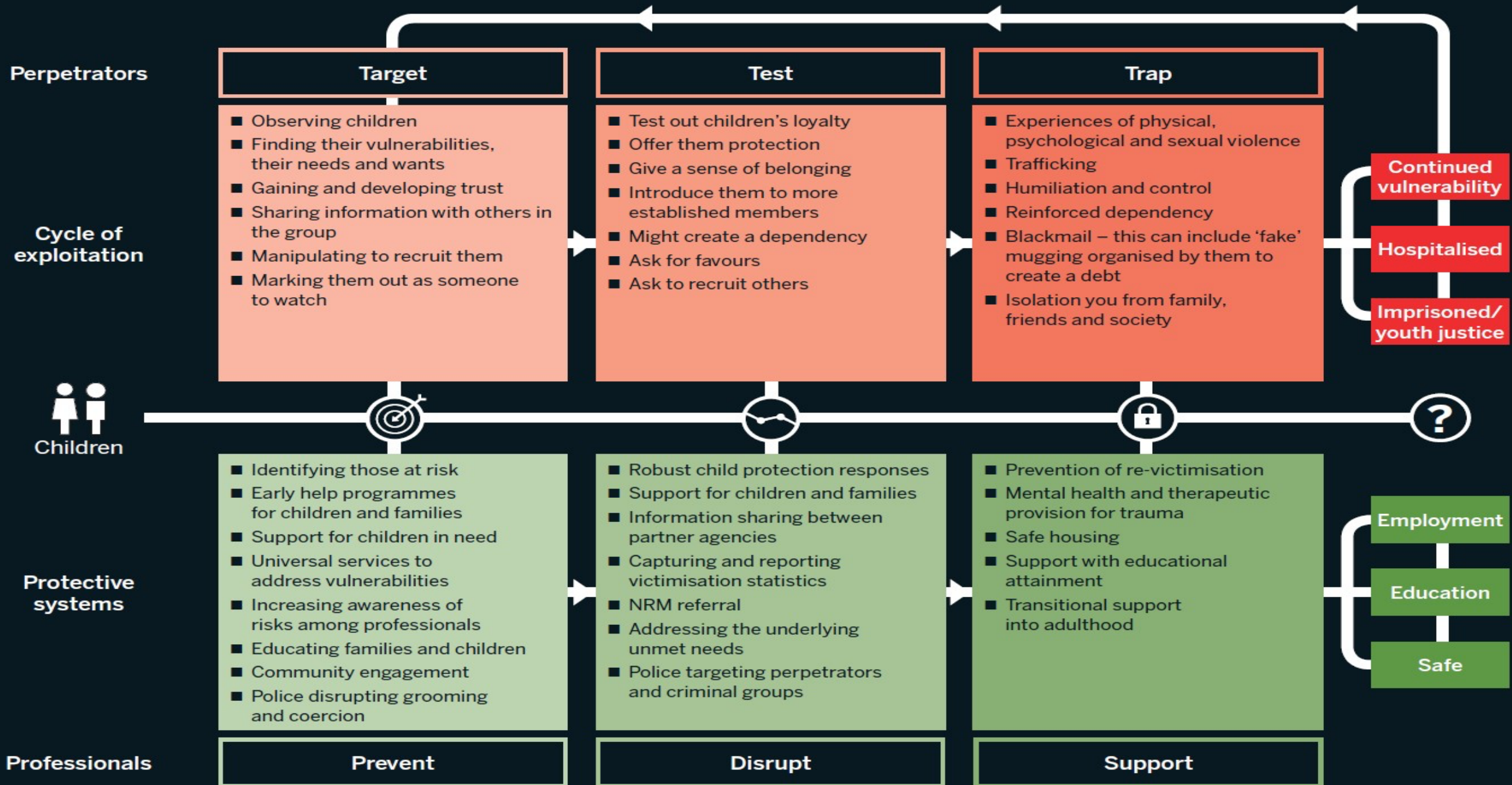
**Vulnerable children and adults** are exploited by gangs to move drugs and cash around



# Exploitation of Young & Vulnerable People

- ▶ **Mental health & addiction problems**
- ▶ **Cuckooing**
- ▶ **Physical, mental and sexual abuse**
- ▶ **Children don't always recognise they are being groomed**
- ▶ **Imperative to speak out and report concerns.**

# A child's journey through child criminal exploitation



## **Possible signs of criminal exploitation and county lines?**

- ▶ **Staying out late/ all night / going missing**
- ▶ **Found away from home**
- ▶ **Changes in behaviour**
- ▶ **Substance misuse**
- ▶ **Unexplained injuries**
- ▶ **New 'expensive' belongings**
- ▶ **Being secretive**
- ▶ **Using inappropriate language**
- ▶ **Truancy / exclusion**
- ▶ **Anti-social / disruptive / aggressive Behaviour**



# How many C&YP are affected?

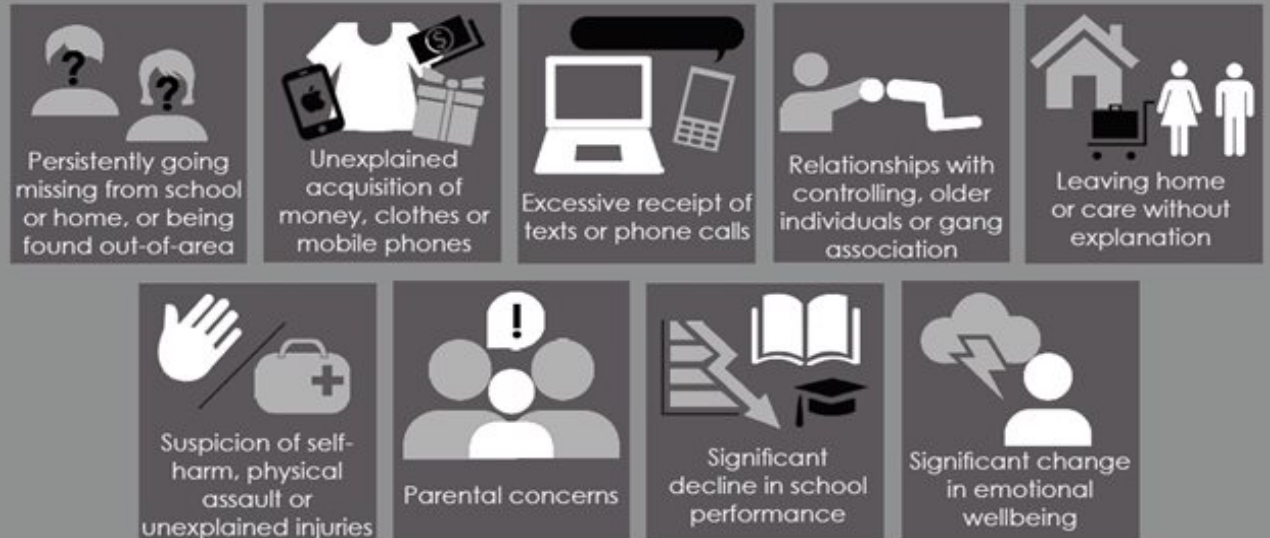


# What to do if you have a concern

- ▶ Follow your safeguarding procedures
- ▶ Report your concerns
- ▶ Follow through with MASH
- ▶ Make help and advice information available within the setting I.e. Childline

## SPOT THE SIGNS OF COUNTY LINES

Children and vulnerable adults are at risk of exploitation from gangs. This could include...



# Where to find out more information?

- ▶ **The National Crime Agency**
- ▶ **NSPCC**
- ▶ **Local Authority Safeguarding team**
- ▶ **The Children's Society**
- ▶ **<https://www.gov.uk/government/publications/county-lines-exploitation>**

# Deborah Udakis Consultancy Ltd

## Follow me on ...

Subscribe to my website @

[www.deborahudakis.co.uk](http://www.deborahudakis.co.uk)



## Facebook

Welcome to Deborah  
Udakis Consultancy

Inspiring Confidence, Delivering Results

## Pinterest

*Pinterest*

