

# SAFE NEWS

---

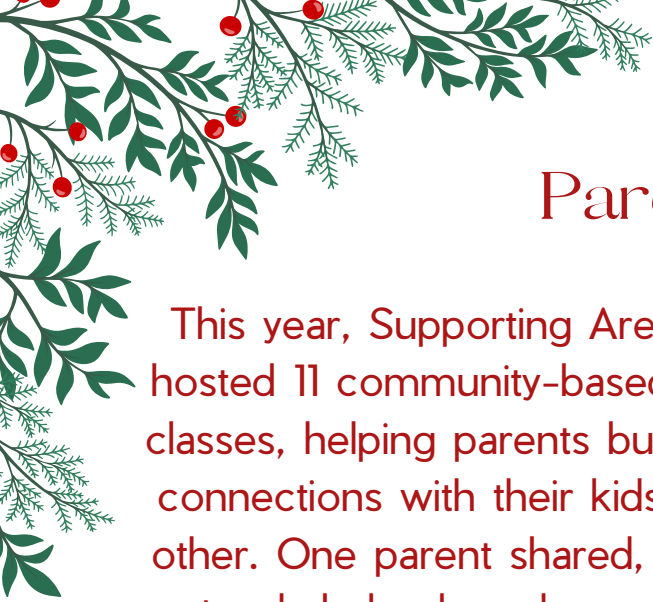
December 2024

***Supporting Families, Strengthening  
Community***

Wishing You a  
Joyful Holiday  
Season!



Supporting Area Families Everyday  
861 Golden Mile Rd. Towanda, Pa 18848



# Parenting Education

This year, Supporting Area Families hosted 11 community-based parenting classes, helping parents build stronger connections with their kids and each other. One parent shared, "This class not only helped me become a better parent, but also a better teacher." We're so excited to support families in creating brighter futures and are proud of the positive impact these classes have in our community!



## Backpack Giveaway

At our 2nd Annual Backpack Giveaway, SAFE was thrilled to distribute 120 backpacks to children in Bradford County. This event wouldn't have been possible without the generous support of our donors. Thank you for making it such a success! The kids' smiles said it all, and we're so grateful to everyone who helped make this day special. Together, we're making a difference!





## Volunteer Highlight

SAFE thrives because of our incredible volunteers and supporters. We want to thank Smiley's Cleaning Services for keeping our facilities spotless and welcoming, and welcome Pam Staats to our New Milford office, where she's already making a wonderful impact.

A special thanks to the Williams Co. volunteers for painting the interior of our old building, helping us prepare for the next chapter, and to Kate Maxwell of Cathafire for her inspiring dedication to our outreach efforts. We're also deeply grateful to our all-volunteer board for their leadership and vision, which keeps our mission growing strong.

There are many ways to get involved—whether it's helping with visits, planning events, or spreading awareness. Every contribution makes a difference. Thank you to all our amazing volunteers for supporting SAFE and building a stronger community!



### Ribbon Cutting

In June, SAFE moved to a larger building to better serve our growing family base. This new space provides a warm, welcoming environment for families. In October, we celebrated with a ribbon cutting, an apple caramel bar, and an open house. One of the kids who regularly visits shared, "This place is happy." Another child expressed her feelings through a drawing captioned "Safe here." These moments remind us why we do what we do. Helping families feel safe, supported, and cared for.

A special thank you to our room sponsors, Ward Manufacturing, the Ruhf Family, Guthrie, and Smiley's Cleaning Services, for making this beautiful space possible. Your generosity ensures that SAFE remains a place of comfort and healing for families in our community.

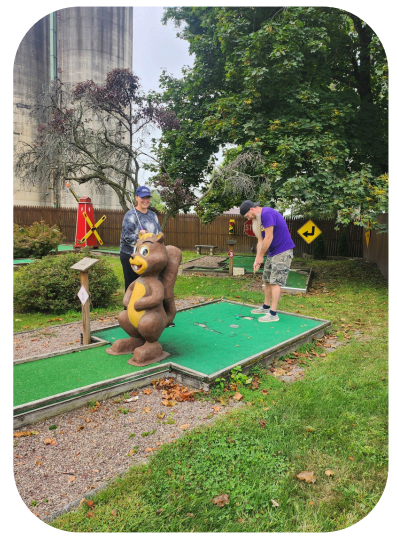




# Mini Golf Fun

In September, SAFE hosted our first annual mini-golf event, and it was a hit! Fun was had by all, and we're already looking forward to making our 2025 event even bigger with more activities and excitement. A huge thank you to Williams Companies for sponsoring this event and helping to make it such a success. We couldn't have done it without your support!

We'd love to have volunteers join us to help plan and bring next year's event to life. Together, we can make it unforgettable!



## Outreach: Recovery Celebrations

In September 2024, SAFE proudly participated in Recovery Celebrations held in Bradford and Sullivan Counties in honor of National Recovery Month. We were deeply inspired by those courageously "recovering out loud" and sharing their journeys. These events remind us that recovery is possible, and we're committed to supporting individuals and families on their path to healing and hope.







## **Supervised Visitations & Exchanges**

SAFE offers a neutral, supportive environment for custody exchanges and supervised visitations, ensuring children can safely spend time with their loved ones. In 2024, we facilitated approximately 40 grandparent visits in addition to numerous parental visitations. Our team of professionals work to ensure a safe, peaceful, and positive experience for everyone involved. If you or someone you know could benefit from these services, we're here to help!

### **Susquehanna County**

We have seen continued growth in Susquehanna County, and this location remains a vital part of our mission, serving several families each week with much needed support and services. We are incredibly grateful to the South New Milford Baptist Church for allowing us to use their Anchor Point location on weekends. Their generosity has been instrumental in helping us create safe, supportive environments for children and families navigating challenging circumstances.





***"Safe Here"—You Can Help Create That Feeling***

This year, one of the children we serve created a painting captioned “Safe here.” It was a simple, but powerful reminder of why we do what we do to ensure every child and family feels supported, cared for and most importantly, safe.

Your donation can help us continue to provide that sense of security. Whether it’s supporting supervised visitations, parenting classes, or safe custody exchanges, your gift directly impacts families in our community.

Together, we can help more children feel “Safe here.” Visit [safenepa.org](https://safenepa.org) or scan the QR code below to make a difference today. Thank you for being part of our mission to create brighter futures! ❤️

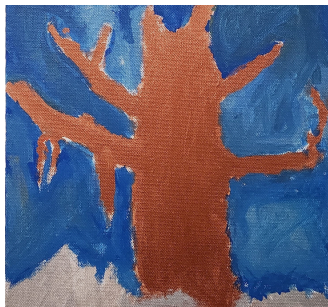


Supporting Area Families Everyday  
861 Golden Mile Rd. Towanda, Pa 18848



## Children's Art Corner

The creativity and heart of the children we serve continue to brighten our days.







# THANK YOU TO OUR AMAZING DONORS

Guthrie  
WARD MFG  
Troy Rotary Club  
Trowbridge & Co  
Kenneth Shaner  
MAC Builders & Design, Inc  
Troy Vet Club Home ASSC7  
Brooks Elderedge-Martin  
Mountain lake Electric/Construction Inc.  
Smiley's Cleaning Services  
The New Shoe Store  
Knolles Rosenbloom Law Group PLLC  
Warner Tractor & Equipment INC.  
Flynn Energy Transport Inc  
Lackawanna College  
Red Run Rod & Gun Club  
Bennett Insurance & Financial Services  
Claverack  
Towanda Lions Club  
John Horton  
Crystal Salsman  
Terry Spencer  
Dani Ruhf  
William Lutz  
Miranda Pepper  
Macy Meuse  
Brittni Brady

Weinberg Foundation  
Moses Taylor  
Tioga Downs  
Bradford Solar  
Women Helping Women  
United Way  
Chesapeake

Ruhf Family  
Kelley Geurin  
Randi Morse  
Barbara Knapp  
Cathi Forker  
Kim Bailey  
Kelli Wesneski  
Stacy Robbins  
Patricia Arnold  
Williams Co.  
Gannon Assoc.  
Cynthia Walton  
SWN

Mike & Heather McNett  
MAC Builders & Design, Inc  
Mrs. Beverly Wesneski  
Travis Fitch  
Bishop Brothers Construction Co Inc.  
Johnson Quarries, INC  
First Citizens Community Bank  
Northern Tier Counseling  
Courtney Watson  
Greater Valley Assembly of God  
Sayre American Legion Post #283  
AMVETS 187 Home Assoc.  
Leprino Foods Company  
Canton Women Of The Moose

Vision Cares  
Nina Balwin Fisher  
Dupont  
Nora Roberts Foundation  
BHE GT&S  
Robert J. Sullivan  
David and Carol Keefe

Thank you to our anonymous donors for making a meaningful difference for the  
families we serve!

Supporting Area Families Everyday  
861 Golden Mile Rd. Towanda, Pa 18848





## SAFE WISH LIST

Your generosity makes a difference in the lives of families overcoming challenges. Here's how you can help:

### PROGRAM SUPPLIES

- Sensory toys for our sensory room (fidget toys, weighted blankets, calming items)
- Art and craft supplies (markers, crayons, paper, glue sticks)
- Parenting class materials (pens, folders, notebooks)

### FACILITIES SUPPORT

- Cleaning supplies (disinfecting wipes, sprays, paper towels, toilet paper)

### FAMILY SUPPORT ITEMS

- Baby wipes
- Non-perishable snacks (granola bars, juice boxes)
- Gift cards (grocery stores, gas cards)

### TECHNOLOGY AND ADMINISTRATIVE NEEDS

- Tablets for program use
- Printer paper
- Office supplies (folders, pens, staplers)

### VOLUNTEER SERVICES

- Monitors
- Event Planning

Every donation, big or small, makes an impact. Thank you for being a part of SAFE's mission to support families and create a brighter future for children in our community. Together, we can make a difference!

