

Se habla español



Refrigeration

**NEW
Products!**

Page 1-12



Cooking Equipment

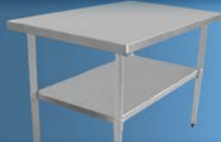
**NEW
Products!**

Page 13-29



Food Processing Equipment

Page 30



Tables & Stands

**NEW
Products!**

Page 31-34



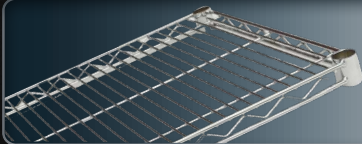
Sinks & Accessories

Page 35-44



Plumbing

Page 45-48



Wire Shelving

Page 49-54



Aluminum Racks

Page 55



Casters & Inserts

Page 56



Janitorial

Page 57

Solid Door Refrigerators

Stainless Steel Reach-In Refrigerators

Features & Benefits:

- Electronic thermostat and digital LED temperature display
- High efficiency CFC free insulation
- Stainless steel front and sides (except glass door)
- Self-closing doors with full length handle, remain open past 90°
- 3 shelves per door
- EXTERIOR: Stainless Steel
- INTERIOR: Stainless steel
- Shipped with casters not installed
- 3 year parts & labor warranty. 5 year compressor part warranty.

One Door Refrigerators



| Item # | Description | Size | Price Ea. |
|---------------|--------------------------------|-----------------------------|-----------|
| ● RR1-19-HC** | 1 Door 19 cu. ft. Refrigerator | 26.8" W x 25.6" D x 82.3" H | \$ |
| ● RR1- HC** | 1 Door 23 cu. ft. Refrigerator | 27" W x 33" D x 82.3" H | \$ |

Two Door Refrigerators

| Item # | Description | Size | Price Ea. |
|-------------|--------------------------------|-----------------------------|-----------|
| ● RR2-35-HC | 2 Door 35 cu. ft. Refrigerator | 39.5" W x 32.7" D x 82.3" H | \$ |
| ● RR2- HC** | 2 Door 49 cu. ft. Refrigerator | 54" W x 33" D x 82.3" H | \$ |

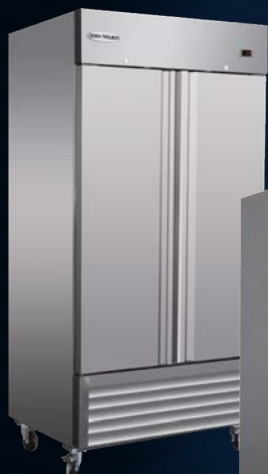
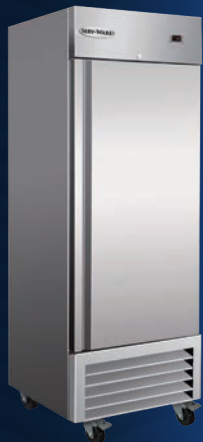
Three Door Refrigerator

| Item # | Description | Size | Price Ea. |
|------------|--------------------------------|-------------------------|-----------|
| ● RR3-HC** | 3 Door 72 cu. ft. Refrigerator | 81" W x 33" D x 82.3" H | \$ |

Stainless Steel Reach-In Freezers

Features & Benefits:

- Electronic thermostat and digital LED temperature display
- High efficiency CFC free insulation
- Stainless steel front and sides (except glass door)
- Self-closing doors with full length handle, remain open past 90°
- 3 shelves per door
- EXTERIOR: Stainless Steel
- INTERIOR: Stainless steel
- Shipped with casters not installed
- 3 year parts & labor warranty. 5 year compressor part warranty.



One Door Freezers



| Item # | Description | Size | Price Ea. |
|---------------|---------------------------|-----------------------------|-----------|
| ● RF1-19-HC** | 1 Door 19 cu. ft. Freezer | 26.8" W x 25.6" D x 82.3" H | \$ |
| ● RF1- HC** | 1 Door 23 cu. ft. Freezer | 27" W x 33" D x 82.3" H | \$ |

Two Door Freezers

| Item # | Description | Size | Price Ea. |
|-------------|---------------------------|-----------------------------|-----------|
| RF2-35-HC | 2 Door 35 cu. ft. Freezer | 35.5" W x 32.7" D x 82.3" H | \$ |
| ● RF2- HC** | 2 Door 49 cu. ft. Freezer | 54" W x 33" D x 82.3" H | \$ |

Three Door Freezer

| Item # | Description | Size | Price Ea. |
|------------|---------------------------|-------------------------|-----------|
| ● RF3-HC** | 3 Door 72 cu. ft. Freezer | 81" W x 33" D x 82.3" H | \$ |

* Single Phase 220 - 240 volts.

Glass Door Reach-In Refrigerators



Glass Door Reach-In Refrigerators - Stainless Steel

Features & Benefits:

- R290 HC refrigerant
- Electronic Thermostat and Digital LED Temperature Display
- High Efficiency CFC Free Insulation
- Self-Closing Door
- Magnetic Gasket can be Replaced without any Tools
- Heating Element Conceal in Door Frame to Eliminate any Condensation
- 4 Shelves per door
- Magnetic gasket can be replaced without any tool
- Material: External: S/S 430 Bottom of internal: S/S 304,
other parts of internal: Aluminum painted
- 3 year parts & labor warranty. 5 year compressor part warranty.



Glass Door Refrigerators



| Item # | Description | Size | Price Ea. |
|-------------|--------------------------------|-----------------------------|-----------|
| • RR1G-HC** | 1 Door 23 cu. ft. Refrigerator | 26.8" W x 31.9" D x 82.7" H | \$ |
| • RR2G-HC** | 2 Door 49 cu. ft. Refrigerator | 53.9" W x 31.9" D x 82.7" H | \$ |

Serv-Ware Commercial “Value Series”

Features & Benefits:

- White painted exterior finish with white ABS interior
- LED temperature display
- Heavy duty steel frame construction with food-safe ABS interior
- High efficiency CFC free insulation
- Field reversible door
- Glass door (ER25G-HC)
- 4 adjustable shelves - ER(F)25-HC & ER25G-HC
- Ships with casters installed
- ETL sanitation approved - conforms to UL471, CSA C22.2 and NSF 7 standards
- 1 year parts & labor warranty.



“Value Series” Commercial Refrigerator



| Item # | Description | Size | Price Ea. |
|-------------|---------------------------|---------------------------|-----------|
| • ER25-HC** | 1 Door White Refrigerator | 30.6" W x 28.8" D x 78" H | \$ |

“Value Series” Commercial Freezer - Self Defrosting

| Item # | Description | Size | Price Ea. |
|-------------|----------------------|---------------------------|-----------|
| • EF25-HC** | 1 Door White Freezer | 30.6" W x 28.8" D x 78" H | \$ |



“Value Series” Under Counter Refrigerator

| Item # | Description | Size | Price Ea. |
|------------|-------------------------------|---------------------------|-----------|
| • ER5-HC** | 1 Door 5 cu. ft. Refrigerator | 23.6" W x 23.4" D x 33" H | \$ |

“Value Series” Under Counter Freezer

| Item # | Description | Size | Price Ea. |
|------------|--------------------------|---------------------------|-----------|
| • EF5-HC** | 1 Door 5 cu. ft. Freezer | 23.6" W x 23.4" D x 33" H | \$ |

Glass Door Merchandiser Refrigerators

Glass Door Merchandiser Refrigerators

Features & Benefits:

- Electronic thermostat and digital LED temperature display
- High efficiency CFC free insulation
- Self-closing, lockable door
- 3 shelves per door - GR(F)-12 & GR(F)-16
- 4 shelves per door - GR(F)-23 & GR(F)-48 & GR(F)(S)-72
- INTERIOR: Powder-coated steel white
- EXTERIOR: Powder-coated steel white, plastic top sign panel with lamp
- Stainless steel floor
- 3 year parts & labor warranty. 5 year compressor part warranty.



One Door Refrigerators

| Item # | Description | Size | Price Ea. |
|-----------|--------------------------------|-------------------------|-----------|
| GR12-HC | 1 Door 12 cu. ft. Refrigerator | 25" W x 26" D x 61.8" H | \$ |
| GR16-HC | 1 Door 16 cu. ft. Refrigerator | 25" W x 26" D x 74.8" H | \$ |
| GR23-HC** | 1 Door 23 cu. ft. Refrigerator | 27" W x 32" D x 79.5" H | \$ |



Two Door Refrigerator

| Item # | Description | Size | Price Ea. |
|-----------|---------------------------------|-------------------------|-----------|
| GR48-HC** | 2 Door 48 cu. ft. Glass Refrig. | 54" W x 32" D x 79.5" H | \$ |

Two Door Sliding Refrigerator

| Item # | Description | Size | Price Ea. |
|------------|--------------------------------|---------------------------|-----------|
| GR48S-HC** | 2 Door 48 cu. ft. Glass Slider | 54" W x 30.7" D x 79.5" H | \$ |



Three Door Refrigerator

| Item # | Description | Size | Price Ea. |
|-----------|---------------------------------|-------------------------|-----------|
| GR72-HC** | 3 Door 72 cu. ft. Glass Refrig. | 81" W x 32" D x 79.5" H | \$ |

Three Door Sliding Refrigerator

| Item # | Description | Size | Price Ea. |
|------------|--------------------------------|---------------------------|-----------|
| GR72S-HC** | 3 Door 72 cu. ft. Glass Slider | 81" W x 30.7" D x 79.5" H | \$ |

Glass Door Merchandiser Freezers

Features & Benefits:

- Electronic thermostat and digital LED temperature display
- High efficiency CFC free insulation
- Self-closing, lockable door
- Triple pane glass doors on freezer
- 3 shelves per door - GR(F)-12 & GR(F)-16
- 4 shelves per door - GR(F)-23 & GR(F)-48 & GR(F)(S)-72
- INTERIOR: Powder-coated steel white
- EXTERIOR: Powder-coated steel white, plastic top sign panel with lamp
- Stainless steel floor
- 3 year parts & labor warranty. 5 year compressor part warranty.



One Door Freezer



| Item # | Description | Size | Price Ea. |
|-------------|---------------------------|-------------------------|-----------|
| ● GF23-HC** | 1 Door 23 cu. ft. Freezer | 27" W x 32" D x 79.5" H | \$ |



Two Door Freezer

| Item # | Description | Size | Price Ea. |
|-------------|---------------------------------|-------------------------|-----------|
| ● GF48-HC** | 2 Door 49 cu. ft. Glass Freezer | 54" W x 32" D x 79.5" H | \$ |



Three Door Freezer

| Item # | Description | Size | Price Ea. |
|-------------|---------------------------------|-------------------------|-----------|
| ● GF72-HC** | 3 Door 72 cu. ft. Glass Freezer | 81" W x 32" D x 79.5" H | \$ |

*Single Phase 220 - 240 volts.

Sandwich, Mega Top Prep Tables

Sandwich Prep Tables

Features & Benefits:

- CFC free refrigerant & foam
- AISI 304 stainless steel framework construction
- Electronic thermostat & digital LED temperature display for accurate control & easy reading
- Auto defrosting & auto evaporation of condensation water
- Magnetic gaskets can be replaced without any tool
- PC plastic pans & plastic cutting board are included
- Unit ships with casters installed (2 brake & 2 non brake)
- 3 year parts & labor warranty. 5 year compressor part warranty.

Sandwich Prep Tables



| Item # | Description | Size | Price Ea. |
|-----------------|------------------|-----------------------------|-----------|
| • SP29-8-HC** | 8 Pan Prep Unit | 29" W x 30" D x 43.2" H | \$ |
| • SP36-8-HC** | 10 Pan Prep Unit | 36.2" W x 29.9" D x 43.2" H | \$ |
| • SP48-12-HC*** | 12 Pan Prep Unit | 48.2" W x 30" D x 43.2" H | \$ |
| • SP60-16-HC*** | 16 Pan Prep Unit | 61.2" W x 30" D x 43.2" H | \$ |
| • SP72-18-HC | 18 Pan Prep Unit | 71.7" W x 30" D x 43.2" H | \$ |

New Overshelves Available:

* SPOS-48 fits SP48-12-HC .

* SPOS-60 fits SP60-16-HC.

* See Page 34.



Mega Top Sandwich Prep Tables

Features & Benefits:

- CFC free refrigerant & foam
- AISI 304 stainless steel framework construction
- Electronic thermostat & digital LED temperature display for accurate control & easy reading
- Auto defrosting & auto evaporation of condensation water
- Magnetic gaskets can be replaced without any tool
- PC plastic pans & plastic cutting board are included
- Unit ships with casters installed (2 brake & 2 non brake)
- 3 year parts & labor warranty. 5 year compressor part warranty.

Mega Top Sandwich Prep Tables

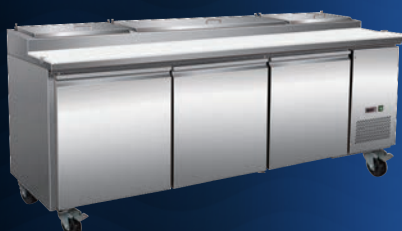


| Item # | Description | Size | Price Ea. |
|-----------------|------------------|-----------------------------|-----------|
| • SP29-12M-HC** | 12 Pan Prep Unit | 29" W x 30" D x 43.2" H | \$ |
| • SP36-12M-HC** | 15 Pan Prep Unit | 36.4" W x 29.1" D x 43.3" H | \$ |
| • SP48-18M-HC** | 18 Pan Prep Unit | 48.2" W x 30" D x 43.2" H | \$ |
| • SP60-24M-HC** | 24 Pan Prep Unit | 61.2" W x 30" D x 43.2" H | \$ |
| • SP72-27M-HC** | 27 Pan Prep Unit | 71.7" W x 30" D x 43.2" H | \$ |

Pizza Prep Tables

Features & Benefits:

- Electronic thermostat and digital LED temperature display
- Stainless steel front and sides
- Plastic pans and cutting board are included
- Magnetic gaskets
- Self closing doors with full length handle, remain open past 90°
- Unit ships with casters installed (2 brake & 2 non brake)
- 3 year parts & labor warranty. 5 year compressor part warranty.



Pizza Prep Tables

| Item # | Description | Size | Price Ea. |
|----------------|------------------|-----------------------------|-----------|
| ● PP44-6-HC*** | 6 Pan Prep Unit | 47.4" W x 32.3" D x 41.3" H | \$ |
| ● PP67-9-HC*** | 9 Pan Prep Unit | 70.8" W x 32.3" D x 41.3" H | \$ |
| ● PP93-12-HC | 12 Pan Prep Unit | 94.2" W x 32.3" D x 41.3" H | \$ |

New Overshelves Available:

* PPOS-44 fits PP44-6-HC .

* PPOS-67 fits PP67-9-HC.

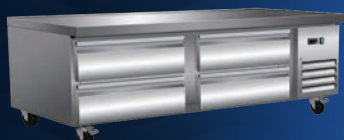
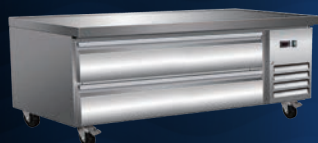
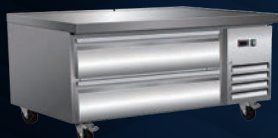
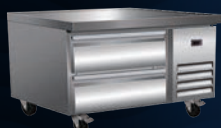
* See Page 34.



Chef Bases

Features & Benefits:

- CFC free refrigerant and foam
- Stainless steel framework construction
- Electronic thermostat and digital LED temperature display
- Auto defrosting and auto evaporation of condensation
- Magnetic gaskets
- Unit ships with casters installed (2 brake & 2 non brake)
- 1 year parts & labor warranty. Additional 4 year compressor part warranty.



Chef Bases

| Item # | Description | Size | Price Ea. |
|-------------|---------------------------|-------------------------|-----------|
| ● CB36-HC** | 2 Drawer 36 in. Chef Base | 38" W x 31.9" D x 26" H | \$ |
| ● CB48-HC** | 2 Drawer 48 in. Chef Base | 50" W x 31.9" D x 26" H | \$ |
| ● CB60-HC** | 2 Drawer 60 in. Chef Base | 62" W x 31.9" D x 26" H | \$ |
| ● CB72-HC** | 4 Drawer 72 in. Chef Base | 74" W x 31.9" D x 26" H | \$ |

Undercounter Refrigerators & Freezers



Undercounter Refrigerators

Features & Benefits:

- HC refrigerant
- CFC free refrigerant & foam
- AISI 304 stainless steel framework construction
- Electronic thermostat & digital LED temperature display for accurate control & easy reading
- Auto defrosting & auto evaporation of condensation water
- Magnetic gaskets can be replaced without any tool
- Unit ships with casters installed (2 brake & 2 Non brake)
- 3 year parts & labor warranty. 5 year compressor part warranty.

Undercounter Refrigerators



| Item # | Description | Size | Price Ea. |
|---------------|---------------------------|-----------------------------|-----------|
| ● UCR-26-HC** | 6.5 cu. ft. Refrigerator | 27.5" W x 30" D x 31.5" H | \$ |
| ● UCR-27-HC** | 6.5 cu. ft. Refrigerator | 27.8" W x 29.9" D x 35.5" H | \$ |
| ● UCR-36-HC** | 7.7 cu. ft. Refrigerator | 36.4" W x 29.9" D x 35.5" H | \$ |
| ● UCR-48-HC** | 12 cu. ft. Refrigerator | 48.2" W x 29.9" D x 35.5" H | \$ |
| ● UCR-60-HC** | 15.5 cu. ft. Refrigerator | 61" W x 29.9" D x 35.5" H | \$ |
| ● UCR-72-HC** | 18 cu. ft. Refrigerator | 71.5" W x 29.9" D x 35.5" H | \$ |

Undercounter Freezers

Features & Benefits:

- HC refrigerant
- CFC free refrigerant & foam
- AISI 304 stainless steel framework construction
- Electronic thermostat & digital LED temperature display for accurate control & easy reading
- Auto defrosting & auto evaporation of condensation water
- Magnetic gaskets can be replaced without any tool
- Unit ships with casters installed (2 brake & 2 Non brake)
- 3 year parts & labor warranty. 5 year compressor part warranty.

Undercounter Freezers



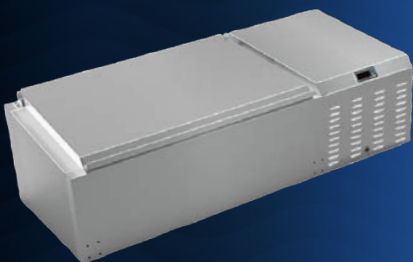
| Item # | Description | Size | Price Ea. |
|---------------|----------------------|-----------------------------|-----------|
| ● UCF-26-HC** | 6.5 cu. ft. Freezer | 27.5" W x 30" D x 31.5" H | \$ |
| ● UCF-27-HC** | 6.5 cu. ft. Freezer | 27.8" W x 29.9" D x 35.5" H | \$ |
| ● UCF-36-HC** | 7.7 cu. ft. Freezer | 36.4" W x 29.9" D x 35.5" H | \$ |
| ● UCF-48-HC** | 12 cu. ft. Freezer | 48.2" W x 29.9" D x 35.5" H | \$ |
| ● UCF-60-HC** | 15.5 cu. ft. Freezer | 61" W x 29.9" D x 35.5" H | \$ |
| ● UCF-72-HC** | 18 cu. ft. Freezer | 71.5" W x 29.9" D x 35.5" H | \$ |



Top Rail Refrigerators

Features & Benefits:

- CFC free refrigerant and foam
- 1/6 pans included
- Interior: S/S 304
- Exterior: S/S 304
- 1 year parts & labor warranty. Additional 4 year compressor part warranty.



Top Rail Refrigerators



| Item # | Description | Size | Price Ea. |
|-------------|-------------|-------------------------------|-----------|
| • TR46-HC** | 46 in. Unit | 45.78" W x 17.44" D x 13.5" H | \$ |
| • TR60-HC** | 59 in. Unit | 59.96" W x 17.44" D x 13.5" H | \$ |



Beer Dispensers & Glass Frosters

Beer Dispensers

Features & Benefits:

- R290 HC refrigerant
- CFC free refrigerant and foam
- Electronic thermostat & digital LED temperature display for accurate
- Control & easy reading
- Self-closing door(s) with locks
- Adjustable heavy duty PVC coated shelves
- Magnetic gasket can be replaced without any tools
- Stainless steel top
- Interior: 430 stainless steel bottom, walls and ceiling
- Exterior: Corrosion resistant vinyl on steel in black
- Internal design accommodates a variety of beer kegs
- Installation board is removable for easy access to condenser coil
- 3" Diameter stainless steel insulated beer column. Designed to channel cold air directly into insulated beer column, thus maximizing your draft beer profits by reduced foaming.
- Ships with castors
- 3 year parts & labor warranty. 5 year compressor part warranty.

24" Direct Draw Beer Dispensers



| Item # | Description | Size | Price Ea. |
|---------------|-----------------------|-------------------------------|-----------|
| • DD24-1-HC** | 24 in. Unit / 1 Tower | 24.1" W x 31.87" D x 38.66" H | \$ |
| • DD49-1-HC** | 49 in. Unit / 1 Tower | 49.1" W x 24.4" D x 36.4" H | \$ |
| • DD49-2-HC** | 49 in. Unit / 2 Tower | 49.1" W x 24.4" D x 36.4" H | \$ |
| • DD61-1-HC** | 61 in. Unit / 1 Tower | 61.06" W x 24.4" D x 36.4" H | \$ |
| • DD61-2-HC** | 61 in. Unit / 2 Tower | 61.06" W x 24.4" D x 36.4" H | \$ |
| • DD73-2-HC** | 73 in. Unit / 2 Tower | 73.07" W x 24.4" D x 36.4" H | \$ |

Glass Frosters

Features & Benefits:

- R290 HC refrigerant
- Forced-air cooling
- INTERIOR: Stainless Steel
- EXTERIOR: Steel painted black
- Chills glass and plate at -10° F
- Electronic thermostat & digital LED temperature display for accurate control & easy reading
- Two shelves and bottom rack standard
- Lockable top
- Built-in condensate evaporator system
- No floor drain or additional plumbing is needed
- 3 year parts & labor warranty. 5 year compressor part warranty.

Glass Frosters



| Item # | Description | Size | Price Ea. |
|-----------|----------------------|---------------------------|-----------|
| • GFR24** | 24 in. Glass Froster | 24.1" W x 27" D x 34.8" H | \$ |
| • GFR36** | 36 in. Glass Froster | 36.9" W x 27" D x 34.8" H | \$ |



Bottle Coolers

Features & Benefits:

- R290 HC refrigerant
- CFC free refrigerant & foam
- Forced-air cooling
- Adjustable dividers included
- Self-defrosting evaporator
- Bottle cap opener & cap catcher standard
- Locking stainless steel sliding doors
- INTERIOR: Stainless steel
- EXTERIOR: Steel painted black stainless steel sliding doors & landing edge
- Ships with casters
- 3 year parts & labor warranty. 5 year compressor part warranty.



Bottle Coolers

| Item # | Description | Size | Price Ea. |
|--------------|-------------|-------------------------|-----------|
| • BC-36-HC** | 36 in. Unit | 36.8" W x 27" D x 35" H | \$ |
| • BC-50-HC** | 49 in. Unit | 49.4" W x 27" D x 35" H | \$ |
| • BC-65-HC** | 64 in. Unit | 64.3" W x 27" D x 35" H | \$ |
| • BC-95-HC** | 95 in. Unit | 95.3" W x 27" D x 35" H | \$ |

Backbar Bottle Coolers

Features & Benefits:

- R290 HC refrigerant
- CFC free refrigerant & foam
- Electronic thermostat & digital LED temperature display for accurate control & easy reading
- Self-closing door
- Magnetic gasket can be replaced without any tools
- Stainless steel top
- INTERIOR: 304 Stainless Steel
- EXTERIOR: Powder-coated steel black
- Ships with casters
- 3 year parts & labor warranty. 5 year compressor part warranty.



Solid Doors

| Item # | Description | Size | Price Ea. |
|---------------|-------------|-------------------------------|-----------|
| • BB2-24-HC** | 49 in. Unit | 49.1" W x 24.4" D x 36.2" H * | \$ |
| • BB3-24-HC** | 61 in. Unit | 61.1" W x 24.4" D x 36.2" H * | \$ |
| • BB4-24-HC** | 73 in. Unit | 73.1" W x 24.4" D x 36.2" H * | \$ |

* Height (H) WITHOUT Casters.

Glass Doors

| Item # | Description | Size | Price Ea. |
|----------------|-------------|-------------------------------|-----------|
| • BB2-24G-HC** | 49 in. Unit | 49.1" W x 24.4" D x 36.2" H * | \$ |
| • BB3-24G-HC** | 61 in. Unit | 61.1" W x 24.4" D x 36.2" H * | \$ |
| • BB4-24G-HC** | 73 in. Unit | 73.1" W x 24.4" D x 36.2" H * | \$ |

* Height (H) WITHOUT Casters.



Gas Ranges & Range With Convection Oven




Ranges 24" / 36" / 60"

Features & Benefits:

- SGR-4B 4 Open top burners, 1 oven
- SGR-6B 6 Open top burners, 1 oven
- **SGR-6B-C 6 open top burners, 1 convection oven**
- SGR-10B 10 Open top burners, 2 ovens
- 30,000 BTU per open top burner
- 31,000 BTU per oven with U-shaped burner
- Fully welded frame for stability
- Stainless steel front, back riser and galvanized sides
- Covered pilot and burner covers to prevent clogging from spillage
- Durable stainless steel pilot
- Easily removable heavy duty cast grates/12" x 12"
- Pull out crumb tray with rounded edges to prevent heat transfer
- 6" Adjustable heavy duty stainless steel legs
- Full size sheet pan fits side-to-side or front-to-back
- Oven thermostat adjusts from 250° to 550° F

Ranges



| Item # | Description | Size | Price Ea. |
|--|-------------------------------|-------------------------|-----------|
| SGR-4B | 4 Burner 24" Range | 24" W x 32.6" D x 60" H | \$ |
| SGR-6B | 6 Burner 36" Range | 36" W x 32.6" D x 60" H | \$ |
|  SGR-6B-C | 6 Burner 36" Range/Convection | 36" W x 35" D x 60" H | \$ |
| SGR-10B | 10 Burner 60" Range | 60" W x 32.6" D x 60" H | \$ |

- Above range is natural gas and supplied with LP orifice kit.*
- * Regulator is included.*
- * Optional Caster Now Available (Brake Only, Sold Each). See page 20.*
- * 3/4 in. Gas Inlet.*



5SB - 4040

Gas Ranges With Griddles & Select Series



Ranges 36" / 60" with Griddles

Features & Benefits:

- SGR-2B-24G 2 Open top burners, 24" griddle, 1 oven
- SGR-4B-12G 4 Open top burners, 12" griddle, 1 oven
- SGR-6B-24G 6 Open top burners, 24" griddle, 2 ovens
- **SGR-6B-24RG 6 Open top burners, 24" raised griddle w/ broiler, 2 ovens**
- 30,000 BTU per open top burner
- 31,000 BTU per oven with U-shaped burner
- Fully welded frame for stability
- Stainless steel front, back riser and galvanized sides
- Covered pilot and burner covers to prevent clogging from spillage
- Durable stainless steel pilot
- Easily removable heavy duty cast grates/12" x 12"
- Pull out crumb tray with rounded edges to prevent heat transfer
- 6" Adjustable heavy duty stainless steel legs
- Full size sheet pan fits side-to-side or front-to-back
- Oven thermostat adjusts from 250° to 550° F



Ranges With Griddle



| Item # | Description | Size | Price Ea. |
|-------------|---------------------------------|-------------------------|-----------|
| SGR-2B-24G | 2 Burner / 24" Griddle | 36" W x 32.6" D x 60" H | \$ |
| SGR-4B-12G | 4 Burner / 12" Griddle | 36" W x 32.6" D x 60" H | \$ |
| SGR-6B-24G | 6 Burner / 24" Griddle | 60" W x 32.6" D x 60" H | \$ |
| SGR-6B-24RG | 6 Bm/24" Raised Griddle/Broiler | 00" W x 32.6" D x 00" H | \$ |

Above range is natural gas and supplied with LP orifice kit.

** Regulator is included.*

** Optional Caster Now Available (Brake Only, Sold Each). See page 20.*

** 3/4 in. Gas Inlet.*



5SB - 4040

Range Serv-Ware Select Series

Features & Benefits:

- Stainless steel panel and sides.
- 12" x 12" cast iron top grates designed for easy movement of pots across top sections.
- Deflectors to direct waste to crumb/drip pan.
- Large front panel, promoting safety and great functionality.
- Chrome plated injected aluminum knobs providing for better toughness and durability.
- Easily removable stainless steel crumb/drip pan.
- Oven with snap action thermostat from 210°F to 550°F and 100% safety shut off.
- 185,000 Total BTUs.
- 26 1/2" Standard bakery depth on all ovens.
- Double-sided enamel oven cavity (Exterior and interior top, bottom, and side).
- Heavy-duty oven wired rack - 1/8" diameter.
- The standard oven has 3 shelf positions and 1 rack.
- Counterweight balanced doors.
- 1-year parts and labor warranty.



Select Series Range

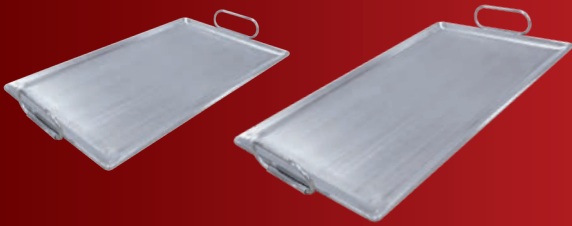
| Item # | Description | Size | Price Ea. |
|-----------|--------------------|-------------------------|-----------|
| SS-SGR-6B | 6 Burner 36" Range | 36" W x 35" D x 62.5" H | \$ |

Gas Range Add-On Griddle Tops

Add-On Portable Griddles

Features & Benefits:

- Portable Grill
- Heavy Duty 7 Gauge Stainless Steel
- 3/4 lip on sides to prevent spillage

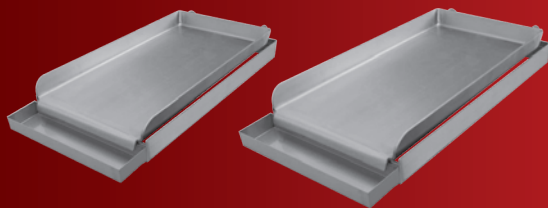


| Item # | Description | Size | Price Ea. |
|---------|-------------------------------|------------------------|-----------|
| PG1423 | Portable Griddle 7GA Steel | 14" W x 23" D x 3/4" H | \$ |
| PG1423S | Portable Griddle 7GA SS Steel | 14" W x 23" D x 3/4" H | \$ |
| PG2323 | Portable Griddle 7GA Steel | 23" W x 23" D x 3/4" H | \$ |
| PG2323S | Portable Griddle 7GA SS Steel | 23" W x 23" D x 3/4" H | \$ |

Add-On Griddle Tops

Features & Benefits:

- Top fits on 2 burner commercial range
- 7 Gauge metal griddle pan
- 7 Gauge metal hooks
- 12 Ga. 304 stainless adjustable frame
- 12 Ga. aluminum handle bar
- 20 Ga. 304 stainless removable grease tray

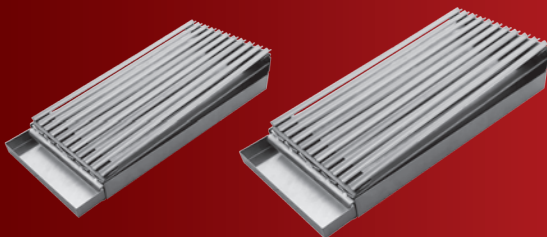


| Item # | Description | Size | Price Ea. |
|--------|--------------------|----------------------|-----------|
| AG12 | Add-On Griddle Top | 12" W x 27" D x 4" H | \$ |
| AG24 | Add-On Griddle Top | 24" W x 27" D x 4" H | \$ |

Add-On Broiler Tops

Features & Benefits:

- Top fits on 2 burner commercial range
- 7 Gauge metal griddle pan
- 7 Gauge metal hooks
- 12 Ga. 304 stainless adjustable frame
- 12 Ga. aluminum handle bar
- 20 Ga. 304 stainless removable grease tray

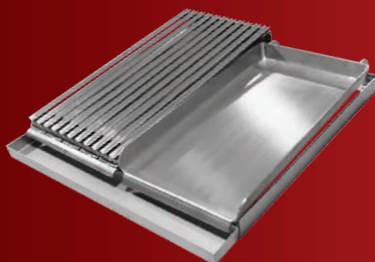


| Item # | Description | Size | Price Ea. |
|--------|--------------------|----------------------|-----------|
| AB12 | Add-On Broiler Top | 12" W x 27" D x 4" H | \$ |
| AB24 | Add-On Broiler Top | 24" W x 27" D x 4" H | \$ |

Add-On Griddle & Broiler Top

Features & Benefits:

- Top fits on 4 burner commercial range
- 7 Gauge metal griddle pan
- 7 Gauge metal hooks
- 12 Ga. 304 stainless adjustable frame
- 12 Ga. aluminum handle bar
- 20 Ga. 304 stainless removable grease tray



| Item # | Description | Size | Price Ea. |
|---------|------------------------------|----------------------|-----------|
| ABG24SS | Add-On Griddle & Broiler Top | 24" W x 27" D x 4" H | \$ |



Cheesemelter

Features & Benefits:

- Gas infrared burner for better even heat distribution
- Extra large infrared burner to cover large cooking area
- Instant heating up, no need to pre-heat
- Standby pilot for easy start
- Three rack positions
- Chrome coating wiring grid
- Zinc alloy knob with chrome coating
- Oil collector at the bottom
- Easy conversion from natural gas to propane
- Stainless steel in the front and sides
- Manual control



Cheesemelter



| Item # | Description | Size | Price Ea. |
|---------|----------------------|---------------------------|-----------|
| SGCM-36 | 36" Gas Cheesemelter | 36" W x 18.7" D x 22.8" H | \$ |

Salamander

Features & Benefits:

- Stainless steel structure
- 6 Cast iron burners
- Infrared burner can cook food faster
- Spring-balanced lifting system, easy to adjust
- Grills can be rolled out for easy loading, unloading, and cleaning
- Grill stopper to prevent grill falling off
- 5-height locking position for different temperatures
- Continuous pilot for instant ignition of main burner
- Stainless steel crumb tray to collect dropped food
- Wall mounting kit included for saving kitchen space
- Can match 36" or 60" ranges (Kit to be ordered additionally)
- 3/4" NPT rear gas connection



Salamander



| Item # | Description | Size | Price Ea. |
|--------------|--------------------|-------------------------|-----------|
| SGSB-36 | 36" Gas Salamander | 36" W x 19" D x 16.5" H | \$ |
| SGR-36-RMB-C | Mounting Kit | NA | \$ |
| SGR-60-RMB | Mounting Kit | NA | \$ |



Gas Stock Pots & Convection Oven

Stock Pots

Features & Benefits:

- Cast iron burner
- Natural gas 110,000 BTU
- Propane gas (LP) 85,000 BTU
- Heavy duty cast iron grate
- Stainless steel front and sides
- Standby pilot for quick and easy start
- Zinc alloy knob
- Stainless steel adjustable legs
- Crumb tray at bottom
- Built for natural gas and supplied with LP conversion kit



Stock Pots

| Item # | Description | Size | Price Ea. |
|--------|-------------|---------------------------|-----------|
| SSSP-1 | 1 Burner | 18" W x 24.6" D x 20.4" H | \$ |
| SSSP-2 | 2 Burner | 18" W x 49.3" D x 20.4" H | \$ |

* 3/4 in. Gas Inlet.



Convection Oven

Features & Benefits:

- 54,000 BTU per oven cavity
- Stainless front with fully visible glazed doors
- Porcelain interior for easy cleaning
- 4 Racks, 13 rack positions
- Automatic igniting system
- Solid state temperature controller
- 60 Minute timer
- 120V Dual speed motor
- Interior light
- Built for natural gas and supplied with LP conversion kit
- 3/4" Gas inlet size
- Single unit (SGCO-1) - Strong, stable angular legs, double stacking options
- Double stack unit - stacking kit with casters included (assembly required)



Convection Ovens

| Item # | Description | Size | Price Ea. |
|--------|--------------------------|-------------------------------|-----------|
| SGCO-1 | Single Deck | 38.12" W x 43.2" D x 57.32" H | \$ |
| STK-2 | Stacking Kit for 2 Units | | \$ |

* 3/4 in. Gas Inlet.



Fryers

Features & Benefits:

- 30,000 BTU per tube and thermostat with a temperature range of 200°F to 400°F
- Stainless steel front, top & header; sides & back galvanized steel
- Stainless steel door with integral liner & recessed handle
- Stainless steel fry tank with peened finish; cold zone in fry tank
- Double-rod stainless steel basket hanger
- 1-1/4" full-port drain valve for easy cleaning
- All fryers have drain tube racks and wire mesh fry baskets
- 6" stainless steel legs with 1" adjustability
- 1 year parts & labor warranty. 2 year pot part only Warranty



5SB - 3535



3 Tube

| Item # | Description | Size | Price Ea. |
|---------|------------------------------|-----------------------------|-----------|
| SGF-40N | 3 Tube Natural 35 to 40 lbs. | 15.5" W x 30.2" D x 46.5" H | \$ |
| SGF-40L | 3 Tube LP 35 to 40 lbs. | 15.5" W x 30.2" D x 46.5" H | \$ |

* Regulator is included. * 3/4 in. hose required.

* 1/2 in. Gas Inlet.

* Optional Caster Now Available (Brake Only, Sold Each). See Page 20.

4 Tube

| Item # | Description | Size | Price Ea. |
|---------|------------------------|-----------------------------|-----------|
| SGF-50N | 4 Tube Natural 50 lbs. | 15.5" W x 30.2" D x 46.5" H | \$ |
| SGF-50L | 4 Tube LP 50 lbs. | 15.5" W x 30.2" D x 46.5" H | \$ |

* Regulator is included. * 3/4 in. hose required.

* 1/2 in. Gas Inlet.

* Optional Caster Now Available (Brake Only, Sold Each). See Page 20.

5 Tube

| Item # | Description | Size | Price Ea. |
|---------|------------------------------|---------------------------|-----------|
| SGF-70N | 5 Tube Natural 75 to 80 lbs. | 21" W x 30.2" D x 46.5" H | \$ |
| SGF-70L | 5 Tube LP 75 to 80 lbs. | 21" W x 30.2" D x 46.5" H | \$ |

* Regulator is included. * 3/4 in. hose required.

* 1/2 in. Gas Inlet.

* Optional Caster Now Available (Brake Only, Sold Each). See Page 20.

Gas Select Series Fryers



Fryers Serv-Ware Select Series

Features & Benefits:

- Tank - stainless steel providing durability for a high production output.
- Fully assembled flue.
- 1 1/4" Full port drain valve for fast draining.
- Cabinet - Stainless steel front, door and sides.
- Millivolt Thermostat, 200°F - 400°F
- High-Temperature safety limit switch.
- Thermo-Safety pilot with built-in regulator.
- Separate Manual gas shutoffs, for front servicing.
- Heavy-duty cast iron burners.
- Tubes constructed of heavy gauge metal.
- Heavy gauge deflector system providing a quicker recovery time.
- 2 heavy nickel plated baskets.
- Unique stainless steel crumb screen with handles.
- Drain Line Cleanout rod.
- Drainpipe extension.
- Removable stainless steel basket hanger requires no tools.
- 6" Adjustable chrome-plated legs.



SS-CASTER-KIT-6



3 Tube

| Item # | Description | Size | Price Ea. |
|------------|------------------------|--------------------------|-----------|
| SS-SGF-40N | 3 Tube Natural 40 lbs. | 16" W x 33" D x 48.42" H | \$ |
| SS-SGF-40L | 3 Tube LP 40 lbs. | 16" W x 33" D x 48.42" H | \$ |

** Regulator is included. * 3/4 in. hose required.*

** 1/2 in. Gas Inlet.*

** Optional Caster Kit Available (2 Brake, 2 Standard Sold as Kit). See Page 20.*

4 Tube

| Item # | Description | Size | Price Ea. |
|------------|------------------------|--------------------------|-----------|
| SS-SGF-50N | 4 Tube Natural 50 lbs. | 16" W x 33" D x 48.42" H | \$ |
| SS-SGF-50L | 4 Tube LP 50 lbs. | 16" W x 33" D x 48.42" H | \$ |

** Regulator is included. * 3/4 in. hose required.*

** 1/2 in. Gas Inlet.*

** Optional Caster Kit Available (2 Brake, 2 Standard Sold as Kit). See Page 20.*

5 Tube

| Item # | Description | Size | Price Ea. |
|------------|------------------------|----------------------------|-----------|
| SS-SGF-70N | 5 Tube Natural 75 lbs. | 20" W x 33.7" D x 48.42" H | \$ |
| SS-SGF-70L | 5 Tube LP 75 lbs. | 20" W x 33.7" D x 48.42" H | \$ |

** Regulator is included. * 3/4 in. hose required.*

** 1/2 in. Gas Inlet.*

** Optional Caster Kit Available (2 Brake, 2 Standard Sold as Kit). See Page 20.*



Casters for Fryers & Ranges

| Item # | Description | Price Ea. |
|-----------------|--|-----------|
| 5SB-3535 | 3 1/2" Optional Caster for Fryer (Brake Only, Sold Each) | \$ |
| 5SB-4040 | 4" Optional Caster for Range (Brake Only, Sold Each) | \$ |
| SS-CASTER-KIT-6 | Optional 6" Caster KIT | \$ |



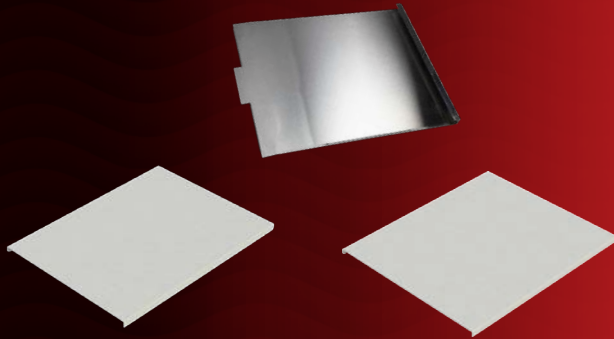
Fryer Joiner Strip & Fryer Splash Guard

| Item # | Description | Price Ea. |
|------------|-------------------------------------|-----------|
| FJS | Fryer Joiner Strip SGF (40, 50, 70) | \$ |
| FSG-1820-3 | 18" x 20.5" Fryer Splash Guard | \$ |



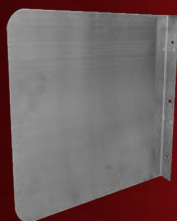
Hose / Restraining Kits & Gas Swivel

| Item # | Description | Price Ea. |
|-----------|--|-----------|
| GHK-36 | 3/4" Fitting 36" Hose with Restraining Kit | \$ |
| GHK-48 | 3/4" Fitting 48" Hose with Restraining Kit | \$ |
| FS-SW-034 | Gas Swivel | \$ |



Tank Covers

| Item # | Description | Price Ea. |
|-------------|----------------------------|-----------|
| TC-90/120 | SGF (40, 50) Tank Cover | \$ |
| TC-150 | SGF-70 Tank Cover | \$ |
| SS-TC-40/50 | Optional SS-GF 40/50 Cover | \$ |
| SS-TC-70 | Optional SS-GF70 cover | \$ |



Wall Mount Sidesplashes

| Item # | Description | Price Ea. |
|----------|---------------------------------|-----------|
| SSP-2420 | 24" x 20" Wall mount Sidesplash | \$ |
| SSP-2428 | 24" x 28" Wall mount Sidesplash | \$ |
| SSP-3020 | 30" x 20" Wall mount Sidesplash | \$ |
| SSP-3028 | 30" x 28" Wall mount Sidesplash | \$ |



Gas Radiant Charbroilers & Hot Plates

Radiant Charbroilers

Features & Benefits:

- 35,000 BTUs per burner provide intense heat
- Durable, attractive stainless steel construction
- Front edge is cool to the touch for safe cooking
- Stainless steel U-style burner optimizes heat control & distribution
- Heavy-duty 10-gauge stainless steel radiant for maximum heat distribution
- Cast iron grates can be adjusted for three different grilling positions
- Perfect for a variety of food on one unit
- Reversible cast iron grates make for varied grill marks
- Easily adjustable pilots with front access for quick lighting
- Back & side splashes offer protection against nasty spills
- Unit serviceable from the front
- Stainless steel legs have adjustable non-skid feet
- Ships ready for natural gas, LP conversion kit included



Radiant Charbroilers

| Item # | Description | Size | Price Ea. |
|---------|-------------|---------------------------|-----------|
| SCBS-24 | 2 Burner | 24" W x 25.2" D x 15.3" H | \$ |
| SCBS-36 | 3 Burner | 36" W x 25.2" D x 15.3" H | \$ |
| SCBS-48 | 4 Burner | 48" W x 25.2" D x 15.3" H | \$ |

*Charbroilers are natural gas and supplied with LP conversion kit. * 3/4 in. Gas Inlet.*

Chef base sold on page 8.

Equipment stand sold on page 33.

** 30 in. deep equipment stand recommended.*

Hot Plates

Features & Benefits:

- 25,000 BTU per burner
- Durable, attractive, stainless steel construction
- Front edge is cool to the touch for safe cooking
- Octagonal burners provide even heat distribution
- Heavy-duty, cast iron grates for maximum heat distribution
- Full-length, seamless drip pan
- Adjustable pilots with front access
- Unit serviceable from the front
- Ships natural gas with an LP conversion kit
- Stainless steel legs have adjustable, non-skid feet



Hot Plates

| Item # | Description | Size | Price Ea. |
|---------|-------------|----------------------------|-----------|
| SHPS-12 | 2 Burner | 12" W x 27.2" D x 11.28" H | \$ |
| SHPS-24 | 4 Burner | 24" W x 27.2" D x 11.28" H | \$ |
| SHPS-36 | 6 Burner | 36" W x 27.2" D x 11.28" H | \$ |

*Hot Plates are natural gas and supplied with LP conversion kit. * 3/4 in. Gas Inlet.*

Chef base sold on page 8.

Equipment stand sold on page 33.

** 30 in. deep equipment stand recommended.*

Manual Griddles

Features & Benefits:

- Steel U-shape burner, each 30,000 BTU/hr for better heat distribution
- One control every 12"
- Standby pilot for easy start
- 3/4" thickness griddle plate
- Stainless steel adjustable heavy duty legs
- Zinc alloy knob with chrome coating
- Oil collector at the bottom
- Easy conversion from natural gas to Propane or vice versa
- Stainless steel in the front and sides



Manual Griddles

| Item # | Description | Size | Price Ea. |
|---------|-------------|-----------------------------|-----------|
| SMGS-12 | 1 Burner | 13.2" W x 25.2" D x 15.3" H | \$ |
| SMGS-24 | 2 Burner | 24" W x 25.2" D x 15.3" H | \$ |
| SMGS-36 | 3 Burner | 36" W x 25.2" D x 15.3" H | \$ |
| SMGS-48 | 4 Burner | 48" W x 25.2" D x 15.3" H | \$ |
| SMGS-60 | 5 Burner | 60" W x 25.2" D x 15.3" H | \$ |

*Griddles are natural gas and supplied with LP conversion kit. * 3/4 in. Gas Inlet. Chef base sold on page 8.*

Equipment stand sold on page 33.

** 30 in. deep equipment stand recommended.*

Thermostatic Griddles

Features & Benefits:

- Cast iron H-shape burners
- 30,000 BTU per burner
- Thermostatic control
- Fully welded stainless back and side splash
- Standby pilot for quick and easy start
- Removable stainless steel drip tray
- Zinc alloy knob with chrome coating
- Stainless steel adjustable heavy duty legs
- Durable, attractive stainless steel front and sides
- Built for natural gas and supplied with LP conversion kit



Thermostatic Griddles

| Item # | Description | Size | Price Ea. |
|---------|-------------|-----------------------------|-----------|
| STGS-12 | 1 Burner | 13.2" W x 25.2" D x 15.3" H | \$ |
| STGS-24 | 2 Burner | 24" W x 25.2" D x 15.3" H | \$ |
| STGS-36 | 3 Burner | 36" W x 25.2" D x 15.3" H | \$ |
| STGS-48 | 4 Burner | 48" W x 25.2" D x 15.3" H | \$ |
| STGS-60 | 5 Burner | 60" W x 25.2" D x 15.3" H | \$ |

*Griddles are natural gas and supplied with LP conversion kit. * 3/4 in. Gas Inlet. Chef base sold on page 8.*

Equipment stand sold on page 33.

** 30 in. deep equipment stand recommended.*

Electric Thermostatic Griddles & Panini Grills

Electric Thermostatic Griddles

Features & Benefits:

- Heavy duty stainless steel construction
- Stainless steel heating element for high efficiency
- ½" Steel cooking plate (ETG-16, ETG-24, ETG-30) 1" Steel cooking plate (ETG-36)
- Even heating/high heat retention
- Removable grease tray
- Indicator lights for power and heat
- Energy saving high output - highly efficient
- Adjustable 4" heavy duty stainless steel legs
- Temperature range 150°–570° F
- 1 year replacement part only warranty
- ETG-16, ETG-24 & ETG-30 power cord supplied.



Electric Thermostatic Griddles



| Item # | Description | Size | Price Ea. |
|---------|-------------|-------------------------------|-----------|
| ETG-16 | 16" | 16.14" W x 19.76" D x 9.40" H | \$ |
| ETG-24 | 24" | 24.13" W x 19.76" D x 9.40" H | \$ |
| ETG-30 | 30" | 30.15" W x 19.76" D x 9.40" H | \$ |
| ETG-36* | 36" | 36.18" W x 19.76" D x 9.40" H | \$ |

* ETG-36 must be hardwired NO power cord supplied.

ETG-36 ships 3 phase 208 volt.

Can be converted to single 220 - 240 volt.

Electric Panini Grills

Features & Benefits:

- For grilling/toasting both sides of bread such as panini sandwiches, grilled cheese sandwiches, wraps, quesadillas, toasting bread or garlic bread etc.
- Commercial construction/heavy duty stainless
- Adjustable temperature 120°–570° F
- Cast iron plates
- Removable crumb tray
- Cool touch handle
- Ready light and power light
- 6 month replacement part only warranty.



Electric Panini Griddles



| Item # | Description | Size | Price Ea. |
|-----------|-------------|-------------------------------|-----------|
| EPG-100GF | Single | 16.92" W x 14.56" D x 8.26" H | \$ |
| EPG-100GG | Single | 16.92" W x 14.56" D x 8.26" H | \$ |
| EPG-200GF | Double | 22.44" W x 14.56" D x 8.26" H | \$ |
| EPG-200GG | Double | 22.44" W x 14.56" D x 8.26" H | \$ |

Electric Fryers, Pizza Oven & Hot Dog Steamers



Electric Fryers

Features & Benefits:

- Stainless steel construction
- Stainless steel heating element for high efficiency Basin / 1 Basket (FF-06L) and 2 Basins / 2 Baskets (FF-06L-2)
- Removable head
- Temperature range 120°–375° F (High limit protection)
- 6 month replacement part only warranty.

Electric Fryers



| Item # | Description | Size | Price Ea. |
|----------|------------------|--------------------------------|-----------|
| EF-06L | 6 L/10 lbs. | 9.84" W x 18.11" D x 14.56" H | \$ |
| EF-06L-2 | 6 L + 6L/20 lbs. | 20.86" W x 18.11" D x 14.56" H | \$ |



Pizza Oven

Features & Benefits:

- Stainless Steel body
- 2.5" high opening accommodates up to 12" diameter pizza or food
- Upper and lower heating elements for even heating throughout oven
- Bake thin or regular crust pizzas 30 minutes or less
- 30 minute timer
- Removable crumb tray for easy cleanup
- 5 ft. cord and plug included 120V, 1450W

Pizza Oven



| Item # | Description | Size | Price Ea. |
|--------|-----------------|----------------------|-----------|
| EPO-02 | Up to 12" Pizza | 20" W x 16" D x 8" H | \$ |



Hot Dog Steamers

Features & Benefits:

- Commercial stainless steel construction
- Pre-cooking time 15-45 minutes
- Temperature range 85°–175° F
- Top loading for easy food accessibility
- Steam control plate
- Large 8 quart reservoir capacity
- Water removal by front drain valve
- Indicator lights for power and heating
- Energy saving high output - highly efficient
- 6 month replacement part only warranty
- 5 ft. cord and plug included 120V, 1450W

Hot Dog Steamers



| Item # | Description | Size | Price Ea. |
|--------|----------------------|--------------------------------|-----------|
| EHS-01 | 200 Hot Dogs/60 Buns | 18.25" W x 14.25" D x 19.25" H | \$ |
| EHS-02 | 100 Hot Dogs/60 Buns | 18.25" W x 14.25" D x 15.75" H | \$ |

Electric Convection Ovens & High Speed Oven



Electric Convection Ovens

Features & Benefits:

- Holds 3, ¼" size sheet pans, not included (ECO-21)
- Holds 4, ½" size sheet pans, not included (ECO-47, ECO-66)
- Great for baking, warming and defrosting
- Heavy duty stainless steel interior and exterior
- Manual knob control
- 0–120 Minute timer
- Indication lights for power and when ready
- Dual wall - high performance double insulated
- Dual pane glass door
- Forced air convection - high efficiency
- Temperature range 150°–500° F
- Cool touch aluminum handle
- 3 Removable chrome wire racks included (ECO-21)
- 4 Removable chrome wire racks included (ECO-47 & ECO-66)
- 1 year replacement part only warranty



Electric Convection Ovens

| Item # | Description | Size | Price Ea. |
|--------|-------------|----------------------------------|-----------|
| ECO-21 | ¼ Size | 18.625" W x 19.25" D x 14.875" H | \$ |
| ECO-47 | ½ Size | 22.875" W x 22" D x 15.875" H | \$ |
| ECO-66 | ½ Size | 22.875" W x 22" D x 20.125" H | \$ |

High Speed Oven

FLASHCHEF™



Features & Benefits:

- Dual impingement for ultra fast browning and crisping on both sides of the food.
- Dual magnetron for high and consistent power output to save heating time.
- High Speed Oven uses Inverter Technology for the best microwave oven control.
- Precisely control and adjust power for proper heating.
- 8" HD TFT touch screen, largest screen in its class for easier reading.
- Intuitive and Icon control panel eliminates language barriers, just like operating a phone.
- Auto top menu function intelligently puts the frequently-used menu groups on top, for instant and convenient access.
- Built-in cavity light provides brighter and clearer sight inside the interior.
- Air Filters are easily removed and cleaned for maintenance.
- Large cavity accommodates a 12" (30cm) pizza with a space-friendly footprint.
- Stainless steel finish for easy maintenance and great appearance.



High Speed Oven

| Item # | Description | Size | Price Ea. |
|--------|-----------------|-----------------------------|-----------|
| G1 | High Speed Oven | 33.8" W x 18.7" D x 29.5" H | \$ |

Microwave Ovens & Electric Induction Cooktops

Microwave Ovens



Features & Benefits:

- Capacity (0.9 cu.ft/ 25 L), accommodates a 12" platter.
- Able to withstand the demands of the Commercial Food Service environment with stainless steel cabinet and oven cavity.
- 1000 Watts of Cooking power.
- Bottom energy feed.
- Full power only for simple operation.
- On door menu guide for frequently used items and reference.
- Chef/Test Kitchen Support.
- Oven cavity light to monitor cooking status without opening the door.
- EZ Grab'n Go door handle for reliable use, no moving parts.



Microwave Ovens

| Item # | Description | Size | Price Ea. |
|---------|-------------|------------------------------|-----------|
| 1025F0A | Dial Timer | 20.125" W x 17" D x 12.25" H | \$ |
| 1025F1A | Touch Pad | 20.125" W x 17" D x 12.25" H | \$ |

Induction Cooktops



Features & Benefits:

- Compact table top design with seamless stainless steel body.
- Slip-resistant metal feet.
- Easy to see front panel with adjustable control for easy operation.
- Dial control with 5 power levels and 24-hours timer.
- Sealed touch control provides consistent quality and makes cleaning easier.
- 5 cooling fans keep electronics cool.
- DC Silent Fans provide a comfortable cooking environment.
- 90% energy efficiency rating.
- Protective air deflector prevents hot exhaust and liquids from being pulled back into unit.
- Thermostatically controlled overheat sensor shuts the unit off to prevent damage to pans and overheating.
- Induction technology transfers heat to the pan, not to the surrounding air, allowing for cool operation.
- No pan, no heat. (**MIC1800F**)
- No Wok, no heat. (**MIC3400WK**) ***A compatible wok pan is included with the MIC3400WK.**
- IPX3 water proof design.
- Sealed motherboard protects against damage.



Induction Cooktops



| Item # | Description | Size | Price Ea. |
|-----------|-------------------|----------------------------|-----------|
| MIC1800F | Induction Cooktop | 14.2" W x 17.7" D x 5.1" H | \$ |
| MIC3400WK | Induction Cooktop | 14.8" W x 19.7" D x 7.4" H | \$ |

Electric Heater Proofers & Convection Oven



Heater Proofers

Features & Benefits:

- All welded heavy duty construction
- SC1836HP - Full size non-insulated
- SC1836HPI - Full size insulated
- UL approved PC clear door
- Door lifts off for easy cleaning and accessibility
- Control panel and easy-to-read LED display on removable bottom control drawer
- Proof mode adjusts humidity between 30% and 100% up to 115 degrees F
- Heat mode with 9 adjustable settings can reach 185° F
- Perfect for storing a wide variety of ready-to-serve dishes
- 36 pan slides accept full size 18" x 26" sheet pans
- Seal in the heat with both magnets and tight-fitting gasket to proper temperature
- Requires a 120V, 1440W electrical connection 15 amp dedicated service
- Comes standard with cord and NEMA 5-15P plug
- UL and NSF listed
- Unit ships with casters (2 brake & 2 non brake)
- 1 year parts and labor warranty

Heater Proofers



| Item # | Description | Size | Price Ea. |
|-----------|---------------|--------------------------|-----------|
| SC1836HP | Non-Insulated | 21" W x 30.75" D x 68" H | \$ |
| SC1836HPI | Insulated | 21" W x 30.75" D x 68" H | \$ |



Convection Oven

Features & Benefits:

- High-efficiency oven with high-efficiency heating tube, direct forced hot-air system, 220V, 60Hz, one phase.
- Electronic temperature controller.
- Double layer heat-resistant glass doors and windows with chamber light.
- 60 minutes continuous bell timer, also can be manually cut off.
- 1/2-1/10HP two-speed air cooling fan & motor.
- With electric heating indicator light and power stand-by indicator light.
- Stainless steel chamber with arc angles.
- 11 removable grid rail, space 1 5/8", 3 chrome net frames.
- The top & front part are made of stainless steel.
- Black coating steel feet are adjustable.
- Independent stainless steel door, double-layer heat-resistant glass window, with separate door handles.
- Stainless steel door seal.
- Double equipment, superposition device.
- Hinged control panel installed in the front, easy to disassemble & repair.
- The top, side, back of the oven & the internal are made by industrial durable insulation materials.

Convection Oven



| Item # | Description | Size | Price Ea. |
|-----------|----------------------|--------------------------------|-----------|
| SECO-2201 | Electric Convec.Oven | 38.11" W x 41.46" D x 54.09" H | \$ |



Electric Warmer Drawers & Chip Warmers



Warmer Drawers

Features & Benefits:

- Heavy duty stainless steel construction with 1" thick fiberglass sheet fully insulated.
- 11 gauge stainless steel drawer slides with 14 gauge slide brackets makes the drawer jam free.
- Accommodates standard size pans 12" x 20" x 4" (*Included), adjustable "pan supports" accommodates various pan sizes.
- Each drawer individually controlled by LED digital temperature controls to accurately monitor the temperature, indicator lamp and vent controls.
- Temperature range of 80° - 220°F.
- A unique heating system that provides consistent temperatures makes the food in it remain moist and flavorful for as long as possible.
- Available in 1-drawer, 2-drawer, and 3-drawer freestanding models.

Warmer Drawers



| Item # | Description | Size | Price Ea. |
|-----------|-----------------|------------------------------|-----------|
| *SWPWDS-1 | 1 Drawer Warmer | 27.75" W x 21" D x 14.88" H | \$ |
| *SWPWDS-2 | 2 Drawer Warmer | 27.75" W x 21" D x 24.24" H | \$ |
| *SWPWDS-3 | 3 Drawer Warmer | 27.75" W x 21" D x 33.625" H | \$ |

- * SWPWDS-1: (1) pan included.
- * SWPWDS-2: (2) pans included.
- * SWPWDS-3: (3) pans included.



Chip Warmers

Features & Benefits:

- Door opens creating a shelf for scooping chips
- Sloping front of unit allows secure closure and easy opening
- Wide top opening doors for easy loading of chips
- Fan circulates air for quick and even heating
- Internal baffle minimizes chip breakage
- Fully removable front panel and bottom baffle for quick and easy cleaning
- Top doors, front panel and bottom baffle are removable without tools
- Durable stainless steel construction with high density insulation
- Adjustable rear-mounted thermostat
- Illuminated on/off switch
- Adjustable legs
- Furnished with power cord and NEMA 5-15 plug

Chip Warmers



| Item # | Description | Size | Price Ea. |
|--------|---------------------|--------------------------------|-----------|
| SWCW26 | 26 gal. Chip Warmer | 26.46" W x 30.79" D x 30.32" H | \$ |
| SWCW46 | 46 gal. Chip Warmer | 26.46" W x 30.79" D x 37.8" H | \$ |

Electric Hot Food Tables & Sneeze/Sanitary Guards



Hot Food Tables

Features & Benefits:

- Stainless heating elements
- Includes a 430 series stainless under shelf and a 201 series stainless legs
- Adjustable stainless steel feet
- Open well bays accommodates standard size pans (**NOT Included*)
- Independent infinite controls
- 1 Removable cutting board
- Designed to hold pre-cooked foods at safe hot food holding temperature
- 6' Cord



3B-0050-B-HFT



Hot Food Tables

| Item # | Description | Size | Price Ea. |
|--------|----------------|-----------------------------|-----------|
| EST3-1 | 1500w/120v | 44" W x 29.5" D x 33.5" H | \$ |
| EST4-1 | 2000w/120v | 58.2" W x 29.5" D x 33.5" H | \$ |
| EST4-2 | 3000w/220-240v | 58.2" W x 29.5" D x 33.5" H | \$ |
| EST5-2 | 3750w/220-240v | 72.3" W x 29.5" D x 33.5" H | \$ |

**Double Sneeze Guard, Sanitary Guard and Cutting Board Kits available.
*Optional Insert Caster for Food Table Only (Brake Only, Sold Each).
See Page 56.*

Double Sneeze Guards

Features & Benefits:

- Stainless steel top
- Double sided sneeze guard
- 6 mm tempered glass guard
- Allows access to food on both sides

| Item # | Description | Size | Price Ea. |
|--------|----------------------|---------------------------|-----------|
| SG3-2 | Fits EST3-1 | 44" W x 10.6" D x 20" H | \$ |
| SG4-2 | Fits EST4-1 & EST4-2 | 58.2" W x 10.6" D x 20" H | \$ |
| SG5-2 | Fits EST5-2 | 72.3" W x 10.6" D x 20" H | \$ |

Sanitary Guards

Features & Benefits:

- Stainless steel top
- Single sided sneeze guard
- 6 mm tempered glass guard
- Allows access to food on one side

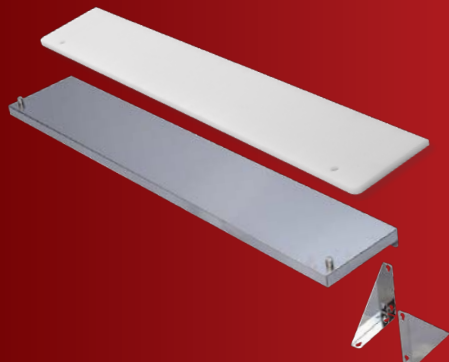
| Item # | Description | Size | Price Ea. |
|--------|----------------------|---------------------------|-----------|
| SG3-1 | Fits EST3-1 | 44" W x 10.6" D x 20" H | \$ |
| SG4-1 | Fits EST4-1 & EST4-2 | 58.2" W x 10.6" D x 20" H | \$ |
| SG5-1 | Fits EST5-2 | 72.3" W x 10.6" D x 20" H | \$ |

Cutting Board Kits

Features & Benefits:

- Includes stainless shelf, 2 support brackets for shelf and cutting board
- Cutting board removes for easy cleaning

| Item # | Description | Size | Price Ea. |
|--------|----------------------|-------------------------|-----------|
| CBK-3 | Fits EST3-1 | 44" W x 7" D x 5/8" H | \$ |
| CBK-4 | Fits EST4-1 & EST4-2 | 58.2" W x 7" D x 5/8" H | \$ |
| CBK-5 | Fits EST5-2 | 72.3" W x 7" D x 5/8" H | \$ |



Planetary Dough Mixers



Features & Benefits:

- Gear driven, high torque transmission
- Three speeds
- Manual Timer (20 & 30 quart only)
- Heat-treated hardened steel alloy gears and shafts
- Permanently lubricated transmission
- Thermal overload protection
- Rigid cast iron body
- Stainless steel bowl guard
- Safety interlocked bowl guard and bowl lift
- Industry standard #12 attachment hub (20 & 30 quart only)
- 120 Volt NEMA 5-15 P
- ETL listed
- Includes dough hook, beater & wire whip
- 1 year parts & labor warranty



Planetary Dough Mixers

| Item # | Description | Size | Price Ea. |
|----------|-----------------------|----------|-----------|
| PM10LA | Planetary Dough Mixer | 10 quart | \$ |
| PM20-PTO | Planetary Dough Mixer | 20 quart | \$ |
| PM30-PTO | Planetary Dough Mixer | 30 quart | \$ |

Slicer



Features & Benefits:

- 12" Hardened alloy knife for durability with dual stone knife sharpener
- Dial adjustable slice thickness (0" - 9/16")
- 1/3 HP fan cooled with thermal overload protection
- 120 Volt NEMA 5-15 P
- Belt driven knife
- Non-slip feet
- Removable gravity feed angled chute with safety guard
- Fully covered electrical and belt drive area
- Stain resistant anodized aluminum finish
- Moisture proof ON/OFF switch
- 90 Days Labor - 1 Parts on Unit. Valid in United States



Slicer

| Item # | Description | Size | Price Ea. |
|--------|-------------|--------------|-----------|
| SLC-12 | Slicer | 12 in. blade | \$ |

***NOTE: Designed for medium volume continuous use with deli meats. NOT suitable for slicing cheese, frozen or raw meat.**

Stainless Steel Work Tables

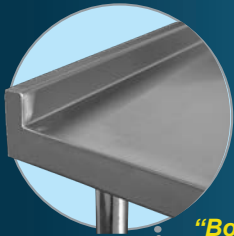


Standard Series Work Tables 18 Gauge 304 Stainless Top



| Item # | Depth x Width | Price Ea. |
|------------|------------------------|-----------|
| T2424CWP-3 | 24" x 24" | \$ |
| T2430CWP-3 | 24" x 30" | \$ |
| T2436CWP-3 | 24" x 36" | \$ |
| T2448CWP-3 | 24" x 48" | \$ |
| T2460CWP-3 | 24" x 60" | \$ |
| T2472CWP-3 | 24" x 72" | \$ |
| T2496CWP-3 | 24" x 96" with 6 Legs | \$ |
| T3015CWP-3 | 30" x 15" Filler Table | \$ |
| T3018CWP-3 | 30" x 18" Filler Table | \$ |
| T3024CWP-3 | 30" x 24" | \$ |
| T3030CWP-3 | 30" x 30" | \$ |
| T3036CWP-3 | 30" x 36" | \$ |
| T3048CWP-3 | 30" x 48" | \$ |
| T3060CWP-3 | 30" x 60" | \$ |
| T3072CWP-3 | 30" x 72" | \$ |
| T3096CWP-3 | 30" x 96" with 6 Legs | \$ |

18 gauge 304 stainless top with galvanized under shelf & galvanized legs.



**"Boxed End"
Turn-up**



With 2" Turn-Up

Standard Series Work Tables with 2" Turnup 304 Stainless Top



| Item # | Depth x Width | Price Ea. |
|--------------|------------------------|-----------|
| T2424CWP-3-T | 24" x 24" | \$ |
| T2430CWP-3-T | 24" x 30" | \$ |
| T2436CWP-3-T | 24" x 36" | \$ |
| T2448CWP-3-T | 24" x 48" | \$ |
| T2460CWP-3-T | 24" x 60" | \$ |
| T2472CWP-3-T | 24" x 72" | \$ |
| T2496CWP-3-T | 24" x 96" with 6 Legs | \$ |
| T3015CWP-3-T | 30" x 15" Filler Table | \$ |
| T3018CWP-3-T | 30" x 18" Filler Table | \$ |
| T3024CWP-3-T | 30" x 24" | \$ |
| T3030CWP-3-T | 30" x 30" | \$ |
| T3036CWP-3-T | 30" x 36" | \$ |
| T3048CWP-3-T | 30" x 48" | \$ |
| T3060CWP-3-T | 30" x 60" | \$ |
| T3072CWP-3-T | 30" x 72" | \$ |
| T3096CWP-3-T | 30" x 96" with 6 Legs | \$ |

18 gauge 304 stainless top with galvanized under shelf & galvanized legs.



Economy Series Work Tables 18 Gauge 430 Stainless Top



| Item # | Depth x Width | Price Ea. |
|------------|---------------|-----------|
| T1815CWP-4 | 18" x 15" | \$ |
| T1824CWP-4 | 18" x 24" | \$ |
| T1830CWP-4 | 18" x 30" | \$ |
| T1836CWP-4 | 18" x 36" | \$ |
| T1848CWP-4 | 18" x 48" | \$ |
| T1860CWP-4 | 18" x 60" | \$ |
| T1872CWP-4 | 18" x 72" | \$ |
| T1896CWP-4 | 18" x 96" | \$ |
| T2415CWP-4 | 24" x 15" | \$ |
| T2424CWP-4 | 24" x 24" | \$ |
| T2430CWP-4 | 24" x 30" | \$ |
| T2436CWP-4 | 24" x 36" | \$ |
| T2448CWP-4 | 24" x 48" | \$ |
| T2460CWP-4 | 24" x 60" | \$ |
| T3024CWP-4 | 30" x 24" | \$ |
| T3030CWP-4 | 30" x 30" | \$ |
| T3036CWP-4 | 30" x 36" | \$ |
| T3048CWP-4 | 30" x 48" | \$ |
| T3060CWP-4 | 30" x 60" | \$ |

18 gauge 430 stainless top with galvanized under shelf & galvanized legs.



Deluxe Series All Stainless Steel Work Tables with 5" Backsplash



| Item # | Depth x Width | Price Ea. |
|---------------|---------------|-----------|
| T3036CWP-16BS | 30" x 36" | \$ |
| T3048CWP-16BS | 30" x 48" | \$ |
| T3060CWP-16BS | 30" x 60" | \$ |
| T3072CWP-16BS | 30" x 72" | \$ |

16 gauge 304 stainless top & 18 gauge 430 stainless under shelf & stainless legs.



Deluxe Series All Stainless Steel Work Tables



| Item # | Depth x Width | Price Ea. |
|--------------|---------------|-----------|
| T3036CWP-16S | 30" x 36" | \$ |
| T3048CWP-16S | 30" x 48" | \$ |
| T3060CWP-16S | 30" x 60" | \$ |
| T3072CWP-16S | 30" x 72" | \$ |

16 gauge 304 stainless top & 18 gauge 430 stainless under shelf & stainless legs.

Equipment Stands



Equipment Filler Table - 18 Gauge 430 Stainless Top



| Item # | Depth x Width | Price Ea. |
|------------|-----------------------|-----------|
| FTG-3012-4 | 30" D x 12" W x 34" H | \$ |
| FTG-3015-4 | 30" D x 15" W x 34" H | \$ |
| FTG-3018-4 | 30" D x 18" W x 34" H | \$ |
| FTG-3024-4 | 30" D x 24" W x 34" H | \$ |

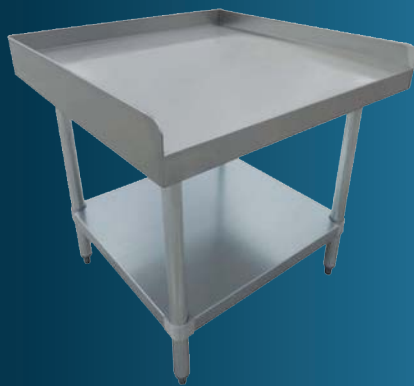
18 gauge 430 stainless top with galvanized under shelf & galvanized legs.

Economy Equipment Stands 30"



| Item # | Depth x Width | Price Ea. |
|---------------|-----------------------|-----------|
| ESG3012W-CWP | 30" D x 12" W x 24" H | \$ |
| ESG3024W-CWP | 30" D x 24" W x 24" H | \$ |
| ESG3036W-CWP | 30" D x 36" W x 24" H | \$ |
| ESG3048W-CWP | 30" D x 48" W x 24" H | \$ |
| ESG3060W-CWP | 30" D x 60" W x 24" H | \$ |
| *ESG3072W-CWP | 30" D x 72" W x 24" H | \$ |

*18 gauge 430 stainless top with galvanized under shelf & galvanized legs. * 6 Legs*



Deluxe Equipment Stands - All Stainless 24"



| Item # | Depth x Width | Price Ea. |
|---------------|-----------------------------------|-----------|
| ESS2424W-CWP | 24" D x 24" W x 24" H | \$ |
| ESS2436W-CWP | 24" D x 36" W x 24" H | \$ |
| ESS2448W-CWP | 24" D x 48" W x 24" H | \$ |
| ESS2460W-CWP | 24" D x 60" W x 24" H | \$ |
| *ESS2472W-CWP | 24" D x 72" W x 24" H with 6 Legs | \$ |

** 6 Legs*

30"



| Item # | Depth x Width | Price Ea. |
|---------------|-----------------------------------|-----------|
| ESS3024W-CWP | 30" D x 24" W x 24" H | \$ |
| ESS3036W-CWP | 30" D x 36" W x 24" H | \$ |
| ESS3048W-CWP | 30" D x 48" W x 24" H | \$ |
| ESS3060W-CWP | 30" D x 60" W x 24" H | \$ |
| *ESS3072W-CWP | 30" D x 72" W x 24" H with 6 Legs | \$ |

*16 gauge 304 stainless top with 18 gauge 430 stainless undershelf & stainless legs. * 6 Legs*



Over Shelf for Work Tables - 18 Gauge

NSF

| Item # | Size | Price Ea. |
|-----------|------|-----------|
| OS-3E-CWP | 36" | \$ |
| OS-4E-CWP | 48" | \$ |
| OS-5E-CWP | 60" | \$ |
| OS-6E-CWP | 72" | \$ |

*18 gauge. *12 in. depth on all.*

NEW ITEM!



Over Shelf for *Sandwich & *Pizza Prep Tables

NSF

| Item # | Description | Depth x Width | Price Ea. |
|---|-----------------------------------|-----------------|-----------|
|  PPOS-44 | Overshelf (*ONLY Fits PP44-6-HC) | 17.25" x 47.5" | \$ |
|  PPOS-67 | Overshelf (*ONLY Fits PP67-9-HC) | 17.25" x 78.88" | \$ |
|  SPOS-48 | Overshelf (*ONLY Fits SP48-12-HC) | 17.25" x 48.25" | \$ |
|  SPOS-60 | Overshelf (*ONLY Fits SP60-16-HC) | 17.25" x 61.25" | \$ |

** PLEASE NOTE! Only Fits Specific Products. See Spec Sheets for Details.*

NEW ITEM!



Stainless Steel Drawers - 16 Gauge

NSF

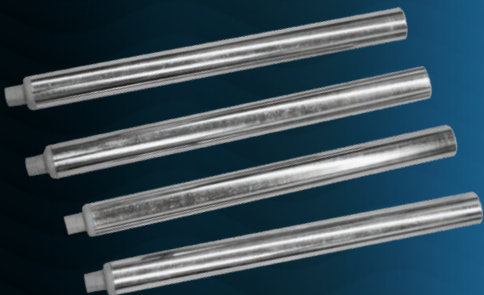
| Item # | Depth x Width | Price Ea. |
|------------|--|-----------|
| SSD-24-CWP | For 24" Deep Worktables (fits 30" wide and up) | \$ |
| SSD-30-CWP | For 30" Deep Worktables (fits 36" wide and up) | \$ |

16 gauge

Optional Legs & Casters for Tables, Dish Tables & Equipment Stands

| Item # | Description | Price Ea. |
|--------|--|-----------|
| GTLS | Galvanized Legs for Tables (Set of 4) | \$ |
| STLS | Stainless Steel Legs for Tables (Set of 4) | \$ |

**Optional Casters see Page 56.*



Tables With Sink & Undershelves



48" Tables with Sink - 16 Gauge 304 Stainless



1 Bowl

Optional waste valve - see page. 46.

| Item # | # of Bowls | Bowl W x D x H | Back Splash | Overall Length | Price Ea. |
|------------|------------|-----------------|-------------|----------------|-----------|
| TSF-3048-L | 1 | 16" x 20" x 12" | 5" | 48" | \$ |
| TSF-3048-R | 1 | 16" x 20" x 12" | 5" | 48" | \$ |

Table Size D x W x H

30" x 48" x 35.5"

16 Gauge 304 stainless top shelf, 16 Gauge 304 stainless 1 left / right fabricated tub. 18 Gauge 430 stainless hat channel, stainless leg and socket, stainless bullet feet. Rounded edge / bullnose edge. Deck-mounted faucet DFY12-CWP, 4" centers, swing nozzle, 12" long spout (low lead) included. 3.5" drain basket included.



60" Tables with Sink - 16 Gauge 304 Stainless



1 Bowl

Optional waste valve - see page 46.

| Item # | # of Bowls | Bowl W x D x H | Back Splash | Overall Length | Price Ea. |
|------------|------------|-----------------|-------------|----------------|-----------|
| TSF-3060-L | 1 | 16" x 20" x 12" | 5" | 60" | \$ |
| TSF-3060-R | 1 | 16" x 20" x 12" | 5" | 60" | \$ |

Table Size D x W x H

30" x 60" x 35.5"

16 Gauge 304 stainless top shelf, 16 Gauge 304 stainless 1 left / right fabricated tub. 18 Gauge 430 stainless hat channel, stainless leg and socket, stainless bullet feet. Rounded edge / bullnose edge. Deck-mounted faucet DFY12-CWP, 4" centers, swing nozzle, 12" long spout (low lead) included. 3.5" drain basket included.



72" Tables with Sink - 16 Gauge 304 Stainless



1 Bowl

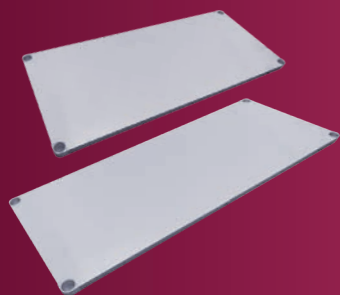
Optional waste valve - see pages 46.

| Item # | # of Bowls | Bowl W x D x H | Back Splash | Overall Length | Price Ea. |
|------------|------------|-----------------|-------------|----------------|-----------|
| TSF-3072-L | 1 | 16" x 20" x 12" | 5" | 72" | \$ |
| TSF-3072-R | 1 | 16" x 20" x 12" | 5" | 72" | \$ |

Table Size D x W x H

30" x 72" x 35.5"

16 Gauge 304 stainless top shelf, 16 Gauge 304 stainless 1 left / right fabricated tub. 18 Gauge 430 stainless hat channel, stainless leg and socket, stainless bullet feet. Rounded edge / bullnose edge. Deck-mounted faucet DFY12-CWP, 4" centers, swing nozzle, 12" long spout (low lead) included. 3.5" drain basket included.



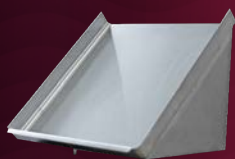
Undershelves (Extra) 48", 60", 72"



| Item # | Size | Price Ea. |
|-----------|-------------------------------|-----------|
| UTSF-3048 | 21.75" D x 41.5" W x 1.625" H | \$ |
| UTSF-3060 | 21.75" D x 53.5" W x 1.625" H | \$ |
| UTSF-3072 | 21.75" D x 65.5" W x 1.625" H | \$ |

18 Gauge 430 stainless undershelf with aluminum die cast clamp.

Slant Racks, Microwave & Wall Shelves

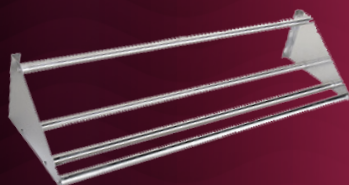


Slant Racks - 18 Gauge 304 Stainless



| Item # | Size | Price Ea. |
|----------|------|-----------|
| SR21-CWP | 21" | \$ |
| SR42-CWP | 42" | \$ |
| SR63-CWP | 63" | \$ |

18 gauge 304 stainless.

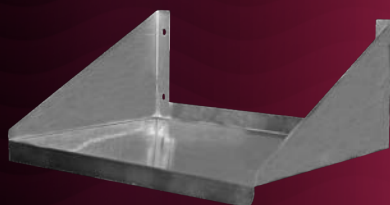


Tubular Slant Racks



| Item # | Size | Price Ea. |
|-----------|------|-----------|
| SRT22-CWP | 22" | \$ |
| SRT42-CWP | 42" | \$ |
| SRT62-CWP | 62" | \$ |

16 gauge 430 stainless, 18 gauge support tubes.



Microwave Shelves - 18 Gauge 304 Stainless



| Item # | Size | Price Ea. |
|--------------|-----------|-----------|
| SSMS1824-CWP | 18" x 24" | \$ |
| SSMS2424-CWP | 24" x 24" | \$ |

18 gauge 304 stainless.



Wall Shelves - 18 Gauge 430 Stainless



| 12" | | |
|--------------|-----------|-----------|
| Item # | D x W | Price Ea. |
| SSWS1224-CWP | 12" x 24" | \$ |
| SSWS1236-CWP | 12" x 36" | \$ |
| SSWS1248-CWP | 12" x 48" | \$ |
| SSWS1260-CWP | 12" x 60" | \$ |
| 14" | | |
| SSWS1424-CWP | 14" x 24" | \$ |
| SSWS1436-CWP | 14" x 36" | \$ |
| SSWS1448-CWP | 14" x 48" | \$ |
| SSWS1460-CWP | 14" x 60" | \$ |

18 gauge 430 stainless.

Pot Hook Racks & Hand Sinks With Splash Guard



Pot Hook Racks - 304 Stainless

Single

| Item # | Size | Price Ea. |
|--------------|-----------------------------|-----------|
| SW1-24-CWP-8 | 24" Single Bar with 2 Hooks | \$ |
| SW1-36-CWP-8 | 36" Single Bar with 3 Hooks | \$ |
| SW1-48-CWP-8 | 48" Single Bar with 4 Hooks | \$ |
| SW1-60-CWP-8 | 60" Single Bar with 5 Hooks | \$ |
| SW1-72-CWP-8 | 72" Single Bar with 6 Hooks | \$ |
| SW1-96-CWP-8 | 96" Single Bar with 8 Hooks | \$ |

Double

| | | |
|-----------|------------------------------|----|
| SW-24-CWP | 24" Double Bar with 4 Hooks | \$ |
| SW-36-CWP | 36" Double Bar with 6 Hooks | \$ |
| SW-48-CWP | 48" Double Bar with 8 Hooks | \$ |
| SW-60-CWP | 60" Double Bar with 10 Hooks | \$ |
| SW-72-CWP | 72" Double Bar with 12 Hooks | \$ |
| SW-96-CWP | 96" Double Bar with 16 Hooks | \$ |

304 stainless.



Hand Sinks - 18 Gauge 304 Stainless Top



| Item # | # of Bowls | Bowl W x D | Bowl Depth | Price Ea. |
|----------|------------|------------|------------|-----------|
| HS10-CWP | 1 | 9" x 9" | 5" | \$ |
| HS15-CWP | 1 | 10" x 15" | 5" | \$ |

Hand sink comes with faucet, basket strainer & mounting bracket 18 gauge 304 stainless top.

Hand Sinks with Splash Guard 18 Gauge 304 Stainless Top - 20 Gauge 304 Stainless Bowl



Left Splash Guard

| Item # | # of Bowls | Bowl W x D | Bowl Depth | Price Ea. |
|--------------|------------|------------|------------|-----------|
| HS10-CWP-SSL | 1 | 9" x 9" | 5" | \$ |
| HS15-CWP-SSL | 1 | 14" x 10" | 5" | \$ |

Hand sink comes with faucet, basket strainer & mounting bracket.

Right Splash Guard

| | | | | |
|--------------|---|-----------|----|----|
| HS10-CWP-SSR | 1 | 9" x 9" | 5" | \$ |
| HS15-CWP-SSR | 1 | 14" x 10" | 5" | \$ |

Hand sink comes with faucet, basket strainer & mounting bracket.

Double Splash Guard

| | | | | |
|-------------|---|-----------------------|-----------|----|
| HS10S-CWP | 1 | 9" x 9" | 5" | \$ |
| HS15S-CWP | 1 | 15" x 10" | 5" | \$ |
| HS15-CWP-SS | | Wall mount Sidesplash | 13" x 15" | \$ |

Hand sink comes with faucet, basket strainer & mounting bracket.



Splash Guards, Drop In & Compact Series



Splash Guards - 18 Gauge 304 Stainless



| Item # | Description | W x H | Price Ea. |
|----------|-----------------------|-----------|-----------|
| SSP-2420 | Wall Mount Sidesplash | 24" x 20" | \$ |
| SSP-2428 | Wall Mount Sidesplash | 24" x 28" | \$ |
| SSP-3020 | Wall Mount Sidesplash | 30" x 20" | \$ |
| SSP-3028 | Wall Mount Sidesplash | 30" x 28" | \$ |

18 gauge 304 stainless.



Drop In Series with Faucet



| 1 Bowl | | | | | | <i>Comes with faucet.</i> |
|-----------------|------------|------------|------------|----------------|-----------|---------------------------|
| Item # | # of Bowls | Bowl W x D | Bowl Depth | Overall Length | Price Ea. | |
| DIS-1C10145-CWP | 1 | 10" x 14" | 5" | 12" | \$ | |
| DIS-1C1014-CWP | 1 | 10" x 14" | 10" | 12" | \$ | |
| 2 Bowl | | | | | | |
| DIS-2C1014-CWP | 2 | 10" x 14" | 10" | 24" | \$ | |
| DIS-2C1416-CWP | 2 | 14" x 16" | 10" | 33" | \$ | |
| DIS-2C2016-CWP | 2 | 20" x 16" | 10" | 45" | \$ | |
| 3 Bowl | | | | | | |
| DIS-3C1014-CWP | 3 | 10" x 14" | 10" | 36" | \$ | |
| DIS-3C1620-CWP | 3 | 16" x 20" | 10" | 55" | \$ | |

16 Gauge 304 Stainless Top - 18 Gauge 304 Stainless Bowl.



Compact Series - 18 Gauge 304 Stainless

Deli / Convenient Store Sink



| 3 Bowl | | | | | | | <i>Optional waste valve - Faucets & drains see pages 45 & 46.</i> |
|---------------|------------|------------|--------------|------------|----------------|-----------|---|
| Item # | # of Bowls | Bowl W x D | Drain Board | Bowl Depth | Overall Length | Price Ea. | |
| CS3CWP1410 | 3 | 10" x 14" | N/A | 10" | 39" | \$ | |
| CS3CWP1410L12 | 3 | 10" x 14" | 12" Left DB | 10" | 48.5" | \$ | |
| CS3CWP1410R12 | 3 | 10" x 14" | 12" Right DB | 10" | 48.5" | \$ | |
| CS3CWP1410212 | 3 | 10" x 14" | 2) 12" DB | 10" | 58" | \$ | |
| CS3CWP1410218 | 3 | 10" x 14" | 2) 18" DB | 10" | 70" | \$ | |
| CS3CWP1614212 | 3 | 14" x 16" | 2) 12" DB | 11" | 70" | \$ | |
| CS3CWP2012212 | 3 | 12" x 20" | 2) 12" DB | 12" | 64" | \$ | |

18 Gauge 304 Stainless.

Deep Economy & Deep Corner Series Sinks



12" Deep Economy Series - 18 Gauge 304 Stainless



1 Bowl

Optional waste valve - Faucets & drains see pages 45 & 46.

| Item # | # of Bowls | W x D | Drain Board | Overall Length | Price Ea. |
|---------------|------------|-----------|--------------|----------------|-----------|
| D1CWP1620 | 1 | 16" x 20" | N/A | 21" | \$ |
| D1CWP1620L-18 | 1 | 16" x 20" | 18" Left DB | 36.5" | \$ |
| D1CWP1620R-18 | 1 | 16" x 20" | 18" Right DB | 36.5" | \$ |
| D1CWP16202-18 | 1 | 16" x 20" | 2) 18" DB | 52" | \$ |
| D1CWP1818 | 1 | 18" x 18" | N/A | 23" | \$ |
| D1CWP1818L-18 | 1 | 18" x 18" | 18" Left DB | 38.5" | \$ |
| D1CWP1818R-18 | 1 | 18" x 18" | 18" Right DB | 38.5" | \$ |
| D1CWP18182-18 | 1 | 18" x 18" | 2) 18" DB | 54" | \$ |

2 Bowl

Optional waste valve - Faucets & drains see pages 45 & 46.

| Item # | # of Bowls | W x D | Drain Board | Overall Length | Price Ea. |
|---------------|------------|-----------|--------------|----------------|-----------|
| D2CWP1620 | 2 | 16" x 20" | N/A | 37" | \$ |
| D2CWP1620L-18 | 2 | 16" x 20" | 18" Left DB | 52.5" | \$ |
| D2CWP1620R-18 | 2 | 16" x 20" | 18" Right DB | 52.5" | \$ |
| D2CWP16202-18 | 2 | 16" x 20" | 2) 18" DB | 68" | \$ |
| D2CWP1818 | 2 | 18" x 18" | N/A | 41" | \$ |
| D2CWP1818L-18 | 2 | 18" x 18" | 18" Left DB | 56.5" | \$ |
| D2CWP1818R-18 | 2 | 18" x 18" | 18" Right DB | 56.5" | \$ |
| D2CWP18182-18 | 2 | 18" x 18" | 2) 18" DB | 72" | \$ |

3 Bowl

Optional waste valve - Faucets & drains see pages 45 & 46.

| Item # | # of Bowls | W x D | Drain Board | Overall Length | Price Ea. |
|---------------|------------|-----------|--------------|----------------|-----------|
| D3CWP1620 | 3 | 16" x 20" | N/A | 53" | \$ |
| D3CWP1620L-18 | 3 | 16" x 20" | 18" Left DB | 68.5" | \$ |
| D3CWP1620R-18 | 3 | 16" x 20" | 18" Right DB | 68.5" | \$ |
| D3CWP16202-18 | 3 | 16" x 20" | 2) 18" DB | 84" | \$ |
| D3CWP1818 | 3 | 18" x 18" | N/A | 59" | \$ |
| D3CWP1818L-18 | 3 | 18" x 18" | 18" Left DB | 74.5" | \$ |
| D3CWP1818R-18 | 3 | 18" x 18" | 18" Right DB | 74.5" | \$ |
| D3CWP18182-18 | 3 | 18" x 18" | 2) 18" DB | 90" | \$ |

18 Gauge 304 Stainless.

14" Deep Corner Series - 18 Gauge 304 Stainless



3 Bowl

Optional waste valve - Faucets & drains see pages 45 & 46.

| Item # | # of Bowls | Bowl W x D | Drain Board | Bowl Depth | Overall Length | Price Ea. |
|------------------|------------|------------|-------------|------------|----------------|-----------|
| *E3CWP18182-18-C | 3 | 18" x 18" | 2) 18" DB | 14" | 57" x 57" | \$ |
| *E3CWP18182-24-C | 3 | 18" x 18" | 2) 24" DB | 14" | 63" x 63" | \$ |
| *E3CWP24242-24-C | 3 | 24" x 24" | 2) 24" DB | 14" | 75" x 75" | \$ |

18 Gauge 304 Stainless. * Cut for 2 faucets.

Deep Economy Series Sinks

14" Deep Economy Series
18 Gauge 304 Stainless



1 Bowl

Optional waste valve - Faucets & drains see pages 45 & 46.

| Item # | # of Bowls | W x D | Drain Board | Overall Length | Price Ea. |
|---------------|------------|-----------|--------------|----------------|-----------|
| E1CWP1818 | 1 | 18" x 18" | N/A | 23" | \$ |
| E1CWP1818L-18 | 1 | 18"x 18" | 18" Left DB | 38.5" | \$ |
| E1CWP1818R-18 | 1 | 18" x 18" | 18" Right DB | 38.5" | \$ |
| E1CWP18182-18 | 1 | 18" x 18" | 2) 18" DB | 54" | \$ |
| E1CWP1818L-24 | 1 | 18" x 18" | 24" Left DB | 44.5" | \$ |
| E1CWP1818R-24 | 1 | 18" x 18" | 24" Right DB | 44.5" | \$ |
| E1CWP18182-24 | 1 | 18" x 18" | 24" DB | 66" | \$ |
| E1CWP1824 | 1 | 18" x 24" | N/A | 23" | \$ |
| E1CWP18242-24 | 1 | 18" x 24" | 2) 24" DB | 66" | \$ |
| E1CWP1824L-24 | 1 | 18" x 24" | 24" Left DB | 44.5" | \$ |
| E1CWP1824R-24 | 1 | 18" x 24" | 24" Right DB | 44.5" | \$ |
| E1CWP2424 | 1 | 24" x 24" | N/A | 29" | \$ |
| E1CWP2424L-24 | 1 | 24" x 24" | 24" Left DB | 50.5" | \$ |
| E1CWP2424R-24 | 1 | 24" x 24" | 24" Right DB | 50.5" | \$ |
| E1CWP3024 | 1 | 30" x 24" | N/A | 35" | \$ |
| E1CWP3624 | 1 | 36" x 24" | N/A | 41" | \$ |

2 Bowl

Optional waste valve - Faucets & drains see pages 45 & 46.

| | | | | | |
|---------------|---|-----------|--------------|-------|----|
| E2CWP1818 | 2 | 18" x 18" | N/A | 41" | \$ |
| E2CWP1818L-18 | 2 | 18"x 18" | 18" Left DB | 56.5" | \$ |
| E2CWP1818R-18 | 2 | 18" x 18" | 18" Right DB | 56.5" | \$ |
| E2CWP18182-18 | 2 | 18" x 18" | 2) 18" DB | 72" | \$ |
| E2CWP2424 | 2 | 24" x 24" | N/A | 53" | \$ |
| E2CWP2424L-24 | 2 | 24" x 24" | 24" Left DB | 74.5" | \$ |
| E2CWP2424R-24 | 2 | 24" x 24" | 24" Right DB | 74.5" | \$ |
| E2CWP24242-24 | 2 | 24" x 24" | 2) 24" DB | 96" | \$ |

3 Bowl

Optional waste valve - Faucets & drains see pages 45 & 46.

| | | | | | |
|----------------|---|-----------|--------------|-------|----|
| E3CWP1515 | 3 | 15" x 15" | N/A | 50" | \$ |
| E3CWP1515L-15 | 3 | 15"x 15" | 15" Left DB | 62.5" | \$ |
| E3CWP1515R-15 | 3 | 15" x 15" | 15" Right DB | 62.5" | \$ |
| E3CWP15152-15 | 3 | 15" x 15" | 2) 15" DB | 75" | \$ |
| E3CWP1818 | 3 | 18" x 18" | N/A | 59" | \$ |
| E3CWP1818L-18 | 3 | 18" x 18" | 18" Left DB | 74.5" | \$ |
| E3CWP1818R-18 | 3 | 18" x 18" | 18" Right DB | 74.5" | \$ |
| E3CWP18182-18 | 3 | 18" x 18" | 2) 18" DB | 90" | \$ |
| E3CWP18182-24 | 3 | 18" x 18" | 2) 24" DB | 102" | \$ |
| E3CWP1824 | 3 | 18"x 24" | N/A | 59" | \$ |
| E3CWP1824L-18 | 3 | 18"x 24" | 18" Left DB | 74.5" | \$ |
| E3CWP1824R-18 | 3 | 18"x 24" | 18" Right DB | 74.5" | \$ |
| E3CWP1824L-24 | 3 | 18"x 24" | 24" Left DB | 80.5" | \$ |
| E3CWP1824R-24 | 3 | 18"x 24" | 24" Right DB | 80.5" | \$ |
| E3CWP18242-18 | 3 | 18"x 24" | 2) 18" DB | 90" | \$ |
| E3CWP18242-24 | 3 | 18"x 24" | 2) 24" DB | 102" | \$ |
| *E3CWP2424 | 3 | 24" x 24" | N/A | 77" | \$ |
| *E3CWP24242-24 | 3 | 24" x 24" | 2) 24" DB | 120" | \$ |

4 Bowl

Optional waste valve - Faucets & drains see pages 45 & 46.

| | | | | | |
|----------------|---|-----------|--------|------|----|
| *E4CWP16202-18 | 4 | 16" x 20" | 18" DB | 100" | \$ |
| *E4CWP18242-24 | 4 | 18" x 24" | 24" DB | 120" | \$ |

18 Gauge 304 Stainless. * Cut for 2 faucets.

Heavy Duty Sinks & Basket

14" Deep Heavy Duty Series - 16 Gauge 304 Stainless



1 Bowl

Optional waste valve - Faucets & drains see pages 45 & 46.

| Item # | # of Bowls | W x D | Drain Board | Overall Length | Price Ea. |
|---------------|------------|-----------|--------------|----------------|-----------|
| 1CWPH1818 | 1 | 18" x 18" | N/A | 23" | \$ |
| 1CWPH1818L-18 | 1 | 18" x 18" | 18" Left DB | 38" | \$ |
| 1CWPH1818R-18 | 1 | 18" x 18" | 18" Right DB | 38" | \$ |
| 1CWPH18182-18 | 1 | 18" x 18" | 2) 18" DB | 54" | \$ |
| 1CWPH1824 | 1 | 18" x 24" | N/A | 23" | \$ |
| 1CWPH1824L-18 | 1 | 18" x 24" | 18" Left DB | 39" | \$ |
| 1CWPH1824R-18 | 1 | 18" x 24" | 18" Right DB | 39" | \$ |
| 1CWPH1824L-24 | 1 | 18" x 24" | 24" Left DB | 46" | \$ |
| 1CWPH1824R-24 | 1 | 18" x 24" | 24" Right DB | 46" | \$ |
| 1CWPH18242-24 | 1 | 18" x 24" | 2) 24" DB | 66" | \$ |

3 Bowl

Optional waste valve - Faucets & drains see pages 45 & 46.

| | | | | | |
|----------------|---|-----------|-----------|------|----|
| 3CWPH18182-24 | 3 | 18" x 18" | 2) 24" DB | 106" | \$ |
| 3CWPH18242-24 | 3 | 18" x 24" | 2) 24" DB | 106" | \$ |
| *3CWPH24242-24 | 3 | 24" x 24" | 2) 24" DB | 124" | \$ |
| *3CWPH20282-30 | 3 | 20" x 28" | 2) 30" DB | 124" | \$ |

16 Gauge 304 Stainless. * Cut for 2 faucets.



14" Deep Heavy Duty Series - 14 Gauge 304 Stainless



1 Bowl

Optional waste valve - Faucets & drains see pages 45 & 46.

| Item # | # of Bowls | Bowl W x D | Drain Board | Bowl Depth | Overall Length | Price Ea. |
|-----------|------------|------------|-------------|------------|----------------|-----------|
| 1C14H2448 | 1 | 48" x 24" | N/A | 14" | 53" | \$ |

3 Bowl

| | | | | | | |
|----------------|---|-----------|-----------|-----|------|----|
| *3C14H20282-36 | 3 | 20" x 28" | 2) 36" DB | 14" | 136" | \$ |
|----------------|---|-----------|-----------|-----|------|----|

16 Gauge 304 Stainless. * Cut for 2 faucets.



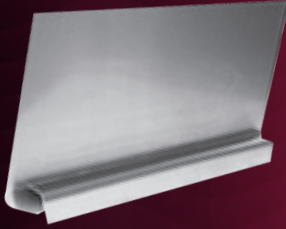
Basket with Slides - 16 Gauge 304 Stainless



| Item # | W x D x H | Price Ea. |
|-------------|----------------------|-----------|
| SSB2025-CWP | 21.375" x 19.5" x 5" | \$ |

16 Gauge 304 Stainless.

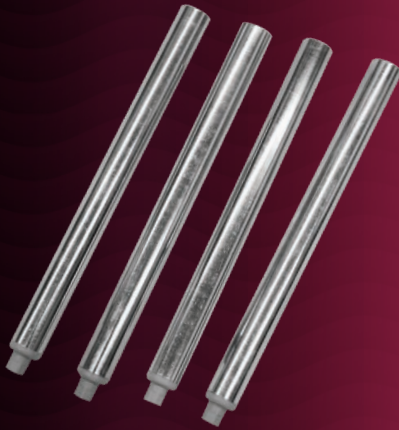
End Splash, Legs & Braces, Clean & Soiled Sinks



Removable Sink End Splash

| Item # | Size | Price Ea. |
|--------|----------------------------|-----------|
| RSS-18 | 1.75" D x 18" W x 12.25" H | \$ |
| RSS-20 | 1.75" D x 20" W x 12.25" H | \$ |
| RSS-24 | 1.75" D x 24" W x 12.25" H | \$ |

18 Gauge 304 Stainless.



Optional Legs & Braces for Sinks & Dish Tables

| Item # | Description | Price Ea. |
|---------|---|-----------|
| *GSLK-1 | Galvanized Leg Brace for 18" Sink (2 Bars, 4 Knuckles) | \$ |
| *GSLK-2 | Galvanized Leg Brace for 20" Sink (2 Bars, 4 Knuckles) | \$ |
| *GSLK-3 | Galvanized Leg Brace for 24" Sink (2 Bars, 4 Knuckles) | \$ |
| *GSLK-4 | Galvanized Leg Brace for 28" Sink (2 Bars, 4 Knuckles) | \$ |
| GSL-14 | Galvanized Legs for 14" Deep Sink (Set of 4) | \$ |
| *SSLK-1 | Stainless Steel Leg Brace for 18" Sink (2 Bars, 4 Knuckles) | \$ |
| *SSLK-2 | Stainless Steel Leg Brace for 20" Sink (2 Bars, 4 Knuckles) | \$ |
| *SSLK-3 | Stainless Steel Leg Brace for 24" Sink (2 Bars, 4 Knuckles) | \$ |
| *SSLK-4 | Stainless Steel Leg Brace for 28" Sink (2 Bars, 4 Knuckles) | \$ |
| SSLS | Stainless Steel Legs for 14" Deep Sinks (Set of 4) | \$ |

**Leg sets sold separately. See pg. 34*



Clean Dish Tables - 16 Gauge 304 Stainless

| Item # (Left) | Item # (Right) | Overall Length | Price Ea. |
|---------------|----------------|----------------|-----------|
| CDT24L-CWP | CDT24R-CWP | 24" | \$ |
| CDT36L-CWP | CDT36R-CWP | 36" | \$ |
| CDT48L-CWP | CDT48R-CWP | 48" | \$ |
| CDT60L-CWP | CDT60R-CWP | 60" | \$ |
| CDT72L-CWP | CDT72R-CWP | 72" | \$ |

16 Gauge 304 Stainless.



Soiled Dish Tables - 16 Gauge 304 Stainless

| Item # (Left) | Item # (Right) | Length | Price Ea. |
|---------------|----------------|--------|-----------|
| DDT36L-CWP | DDT36R-CWP | 36" | \$ |
| DDT48L-CWP | DDT48R-CWP | 48" | \$ |
| DDT60L-CWP | DDT60R-CWP | 60" | \$ |
| DDT72L-CWP | DDT72R-CWP | 72" | \$ |

16 Gauge 304 Stainless.

Budget, Mop Sinks, & Drain boards



Budget Sinks- 18 Gauge 430 Stainless Non NSF



1 Bowl

Optional waste valve - Faucets & drains see pages 45 & 46.

| Item # | # of Bowls | Bowl W x D | Bowl Depth | Overall Length | Price Ea. |
|----------|------------|------------|------------|----------------|-----------|
| BS1-1818 | 1 | 18" x 18" | 13" | 21" | \$ |
| BS1-1821 | 1 | 18" x 21" | 13" | 20" | \$ |
| BS1-2424 | 1 | 24" x 24" | 13" | 27" | \$ |
| BS1-3621 | 1 | 36" x 21" | 13" | 39" | \$ |
| BS1-3624 | 1 | 36" x 24" | 13" | 39" | \$ |

2 Bowl

| | | | | | |
|----------|---|-----------|-----|-----|----|
| BS2-1818 | 2 | 18" x 18" | 13" | 39" | \$ |
| BS2-1821 | 2 | 18" x 21" | 13" | 39" | \$ |
| BS2-2424 | 2 | 24" x 24" | 13" | 51" | \$ |

3 Bowl

| | | | | | |
|----------|---|-----------|-----|-----|----|
| BS3-1221 | 3 | 12" x 21" | 13" | 39" | \$ |
| BS3-1818 | 3 | 18" x 18" | 13" | 57" | \$ |
| BS3-1821 | 3 | 18" x 21" | 13" | 57" | \$ |
| BS3-2424 | 3 | 24" x 24" | 13" | 75" | \$ |

18 Gauge 430 Stainless.

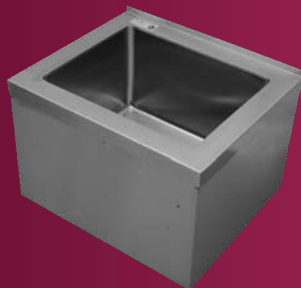


Optional Drainboards for Budget Sink Only



| Item # | Size | Price Ea. |
|-----------|-----------|-----------|
| DB-1818-4 | 18" x 18" | \$ |
| DB-1821-4 | 18" x 21" | \$ |
| DB-2421-4 | 24" x 21" | \$ |
| DB-2424-4 | 24" x 24" | \$ |

18 Gauge 430 stainless.



Mop Sinks - 18 Gauge



| Item # | Size | Price Ea. |
|--------------|-----------------|-----------|
| MS162012-CWP | 25" x 21" x 16" | \$ |
| MS202812-CWP | 33" x 25" x 16" | \$ |

**Service faucet available on pg. 46*

Bar Series

18 Gauge 304 Stainless Top, Bowl & Back - 20 Gauge 304 Stainless Apron



1 Bowl

Faucets and overflow pipes sold separately, see below.

| Item # | # of Bowls | Bowl W x D | Drain Board | Bowl Depth | Overall Length | Price Ea. |
|----------------|------------|------------|--------------|------------|----------------|-----------|
| BAR1B14-CWP | 1 | 10" x 14" | N/A | 5" | 14.5" | \$ |
| BAR1B24-L-CWP | 1 | 10" x 14" | 12" Left DB | 10" | 24" | \$ |
| BAR1B24-R-CWP | 1 | 10" x 14" | 12" Right DB | 10" | 24" | \$ |
| BAR1B36-LR-CWP | 1 | 10" x 14" | 2) 12" DB | 10" | 36" | \$ |

2 Bowl

| | | | | | | |
|----------------|---|-----------|--------------|-----|-----|----|
| BAR2B26-CWP | 2 | 10" x 14" | N/A | 10" | 26" | \$ |
| BAR2B36-L-CWP | 2 | 10" x 14" | 12" Left DB | 10" | 36" | \$ |
| BAR2B36-R-CWP | 2 | 10" x 14" | 12" Right DB | 10" | 36" | \$ |
| BAR2B48-LR-CWP | 2 | 10" x 14" | 2) 13" DB | 10" | 48" | \$ |

3 Bowl

| | | | | | | |
|----------------|---|-----------|--------------|-----|-------|----|
| BAR3B38-CWP | 3 | 10" x 14" | N/A | 10" | 38.5" | \$ |
| BAR3B48-L-CWP | 3 | 10" x 14" | 12" Left DB | 10" | 48" | \$ |
| BAR3B48-R-CWP | 3 | 10" x 14" | 12" Right DB | 10" | 48" | \$ |
| BAR3B60-LR-CWP | 3 | 10" x 14" | 2) 13" DB | 10" | 60" | \$ |
| BAR3B72-LR-CWP | 3 | 10" x 14" | 2) 19" DB | 10" | 72" | \$ |

4 Bowl

| | | | | | | |
|-----------------|---|-----------|-----------|-----|-----|----|
| *BAR4B72-LR-CWP | 4 | 10" x 14" | 2) 13" DB | 10" | 72" | \$ |
|-----------------|---|-----------|-----------|-----|-----|----|

18 Gauge 304 Stainless Top, Bowl & Back - 20 Gauge 304 Stainless Apron. * Cut for 2 faucets.

Bar Sink Accessories



| Item # | Description | Price Ea. |
|-------------|---------------------------------------|-----------|
| OFP-8-CWP | 8" Overflow Pipe for Bar Sinks | \$ |
| DTF4-6-CWP | 4" Wall Mount Faucet with a 6" Spout | \$ |
| DTF4-8-CWP | 4" Wall Mount Faucet with a 8" Spout | \$ |
| DTF4-10-CWP | 4" Wall Mount Faucet with a 10" Spout | \$ |
| DTF4-12-CWP | 4" Wall Mount Faucet with a 12" Spout | \$ |
| DTF4-14-CWP | 4" Wall Mount Faucet with a 14" Spout | \$ |



Wall Mount Pre-Rinse

| Item # | Description | Price Ea. |
|------------|-----------------------|-----------|
| PRW8-CWP-E | 8" Center, Economy | \$ |
| PRW8-CWP | 8" Center, Heavy Duty | \$ |

Deck Mount Pre-Rinse



| Item # | Description | Price Ea. |
|----------|-------------|-----------|
| PRS4-CWP | 4" Center | \$ |

Add-On Faucet for Pre-Rinse



| Item # | Description | Price Ea. |
|----------|-------------|-----------|
| AF08-CWP | 8" Spout | \$ |
| AF12-CWP | 12" Spout | \$ |
| AF16-CWP | 16" Spout | \$ |

For Models PRW8 & PRS4 Only.

Wall Mount Faucets



| Item # | Description | Price Ea. |
|----------|-------------|-----------|
| WF08-CWP | 8" Spout | \$ |
| WF10-CWP | 10" Spout | \$ |
| WF12-CWP | 12" Spout | \$ |
| WF14-CWP | 14" Spout | \$ |
| WF16-CWP | 16" Spout | \$ |

Wall Mount Faucet Kit

| Item # | Description | Price Ea. |
|----------|-----------------------|-----------|
| WFMK-CWP | Wall Mount Faucet Kit | \$ |

** Needed for wall mounts & PR*



Hand Sink Faucet

NSF

| Item # | Description | Price Ea. |
|---|--|-----------|
| *PFW4G-CWP | Replacement Faucet for Hand Sink or Other Wall Application | \$ |
| <i>* For HS10 sink with sidesplash, requires FP1030</i> | | |



Deck Mount Faucets

NSF

| Item # | Description | Price Ea. |
|-----------|-------------|-----------|
| DFY10-CWP | 10" Spout | \$ |
| DFY12-CWP | 12" Spout | \$ |



Mop Sink Service Faucet

NSF

| Item # | Description | Price Ea. |
|--------|-------------|-----------|
| SF1000 | 8" Center | \$ |



Waste Valve with Overflow Cap

NSF

| Item # | Description | Price Ea. |
|----------------------------|-------------|-----------|
| 5D-35T-20A | Twist | \$ |
| <i>Comes with Adapter.</i> | | |



Sink Drains & Basket

| Item # | Description | Price Ea. |
|------------|----------------------------|-----------|
| BS01-CWP | 3.5" Drain Basket Strainer | \$ |
| HS15-CWP-S | 1.5" Drain Basket Strainer | \$ |



Replacement Hose

| Item # | Description | Price Ea. |
|--------|----------------------|-----------|
| PR1010 | 44" Replacement Hose | \$ |



Replacement Spring

| Item # | Description | Price Ea. |
|--------|------------------------|-----------|
| PR1020 | 44" Replacement Spring | \$ |



Lever Handle Repair Kit

| Item # | Description | Price Ea. |
|--------|-------------|-----------|
| FP1030 | 1 Pair | \$ |



Replacement Spray Valve

| Item # | Description | Price Ea. |
|--------|-------------------------|-----------|
| PR1000 | Replacement Spray Valve | \$ |



Coupling Flanges

| Item # | Description | Price Ea. |
|--------|--------------------------|-----------|
| FP1300 | Coupling Flanges, 1 Pair | \$ |



Faucet Pressure Aerator Nozzle

| Item # | Description | Price Ea. |
|--------|--------------------------|-----------|
| FP0015 | 1.5 GPM Flow Rate Nozzle | \$ |



Foot Valve

| Item # | Description | Price Ea. |
|----------|-------------|-----------|
| SSFV-CWP | Foot Valve | \$ |



Knee Valve

| Item # | Description | Price Ea. |
|----------|-------------|-----------|
| SSKV-CWP | Knee Valve | \$ |



Knee Valve with Goose Neck Faucet

| Item # | Description | Price Ea. |
|---------|-----------------------------------|-----------|
| SSKV-GF | Knee Valve with Goose Neck Faucet | \$ |



Spray Valve Repair Kit

| Item # | Description | Price Ea. |
|--------|------------------------|-----------|
| FP1020 | Fits Above Spray Valve | \$ |



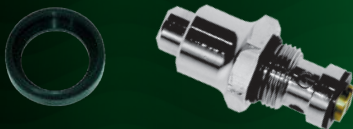
Replacement Pre-Rinse Spindle

| Item # | Description | Price Ea. |
|--------|---------------------|-----------|
| FP1040 | Replacement Spindle | \$ |



Double Jointed Faucet

| Item # | Description | Price Ea. |
|-------------|---------------------------|-----------|
| AF-18DJ-CWP | 10" Double Jointed Faucet | \$ |

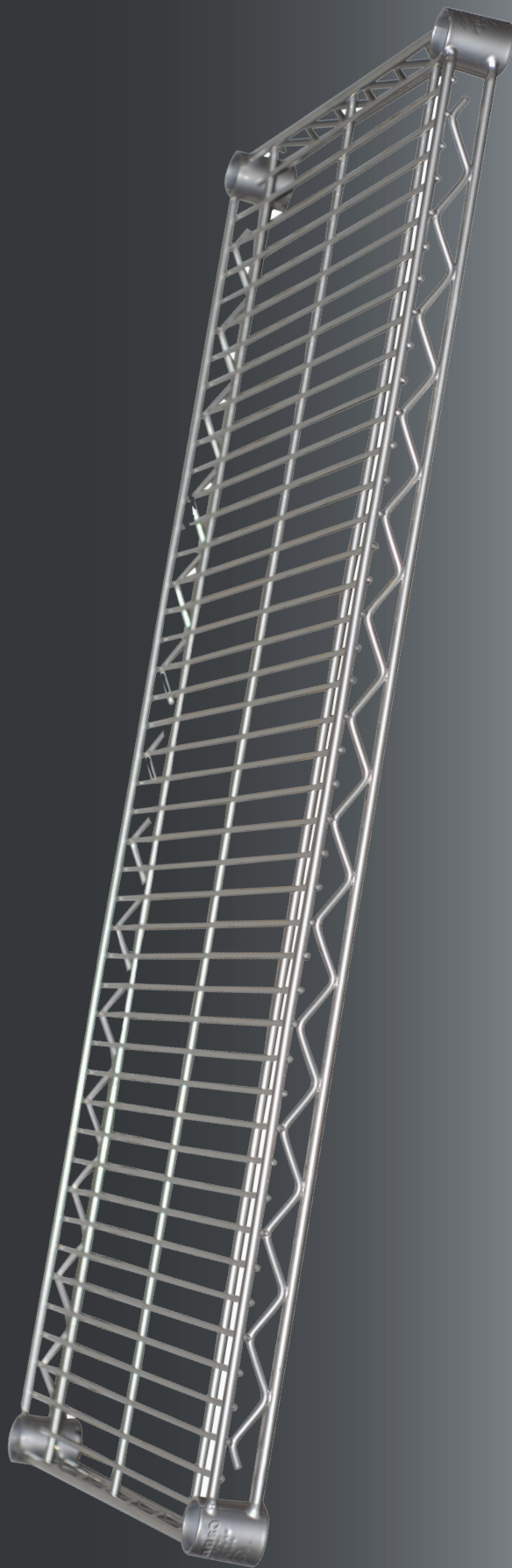


Pre-Rinse Accessories

| Item # | Description | Price Ea. |
|------------|-----------------------|-----------|
| PR1050-CWP | Spray Head Bumper | \$ |
| PR1060-CWP | Button Valve Assembly | \$ |

Silver Epoxy Wire Shelving

Silver Epoxy Wire Shelving - 3 Year Warranty



| 14" | Size | |
|---------------|--------------|------------------|
| Item # | D x W | Price Ea. |
| SL1424CWP | 14" x 24" | \$ |
| SL1430CWP | 14" x 30" | \$ |
| SL1436CWP | 14" x 36" | \$ |
| SL1442CWP | 14" x 42" | \$ |
| SL1448CWP | 14" x 48" | \$ |
| SL1454CWP | 14" x 54" | \$ |
| SL1460CWP | 14" x 60" | \$ |
| SL1472CWP | 14" x 72" | \$ |
| 18" | | |
| SL1824CWP | 18" x 24" | \$ |
| SL1830CWP | 18" x 30" | \$ |
| SL1836CWP | 18" x 36" | \$ |
| SL1842CWP | 18" x 42" | \$ |
| SL1848CWP | 18" x 48" | \$ |
| SL1854CWP | 18" x 54" | \$ |
| SL1860CWP | 18" x 60" | \$ |
| SL1872CWP | 18" x 72" | \$ |
| 21" | | |
| SL2124CWP | 21" x 24" | \$ |
| SL2130CWP | 21" x 30" | \$ |
| SL2136CWP | 21" x 36" | \$ |
| SL2142CWP | 21" x 42" | \$ |
| SL2148CWP | 21" x 48" | \$ |
| SL2154CWP | 21" x 54" | \$ |
| SL2160CWP | 21" x 60" | \$ |
| SL2172CWP | 21" x 72" | \$ |
| 24" | | |
| SL2424CWP | 24" x 24" | \$ |
| SL2430CWP | 24" x 30" | \$ |
| SL2436CWP | 24" x 36" | \$ |
| SL2442CWP | 24" x 42" | \$ |
| SL2448CWP | 24" x 48" | \$ |
| SL2454CWP | 24" x 54" | \$ |
| SL2460CWP | 24" x 60" | \$ |
| SL2472CWP | 24" x 72" | \$ |
| 30" | | |
| SL3036CWP | 30" x 36" | \$ |
| SL3048CWP | 30" x 48" | \$ |
| SL3060CWP | 30" x 60" | \$ |
| SL3072CWP | 30" x 72" | \$ |

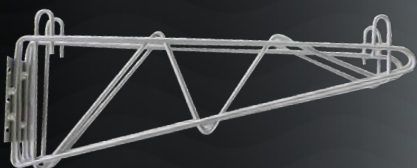
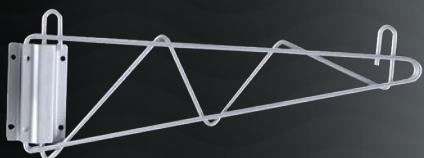


Silver Epoxy Posts

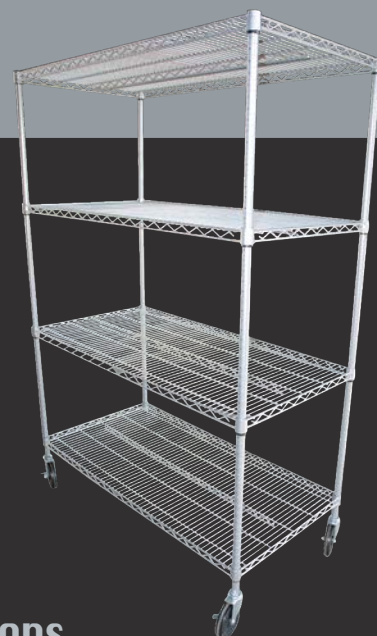
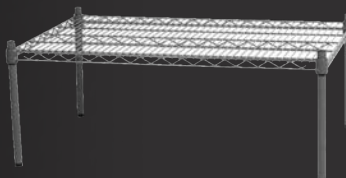
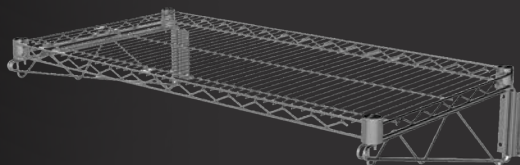
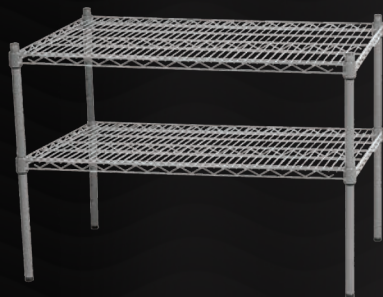
| Item # | Size | Price Ea. |
|---------|------|-----------|
| SL14CWP | 14" | \$ |
| SL34CWP | 34" | \$ |
| SL54CWP | 54" | \$ |
| SL63CWP | 63" | \$ |
| SL74CWP | 74" | \$ |
| SL86CWP | 86" | \$ |

** Other wire accessories sold on page 54.*

Silver Epoxy Wall Brackets



| Item # | Size | Qty | Price Ea. |
|--------------|--------------------|-----|-----------|
| SLWB14-CWP | 14" Single Bracket | 2 | \$ |
| SLWB18-CWP | 18" Single Bracket | 2 | \$ |
| SLWB21-CWP | 21" Single Bracket | 2 | \$ |
| SLWB24-CWP | 24" Single Bracket | 2 | \$ |
| SLDWMB14-CWP | 14" Double Bracket | 1 | \$ |
| SLDWMB18-CWP | 18" Double Bracket | 1 | \$ |
| SLDWMB21-CWP | 21" Double Bracket | 1 | \$ |
| SLDWMB24-CWP | 24" Double Bracket | 1 | \$ |

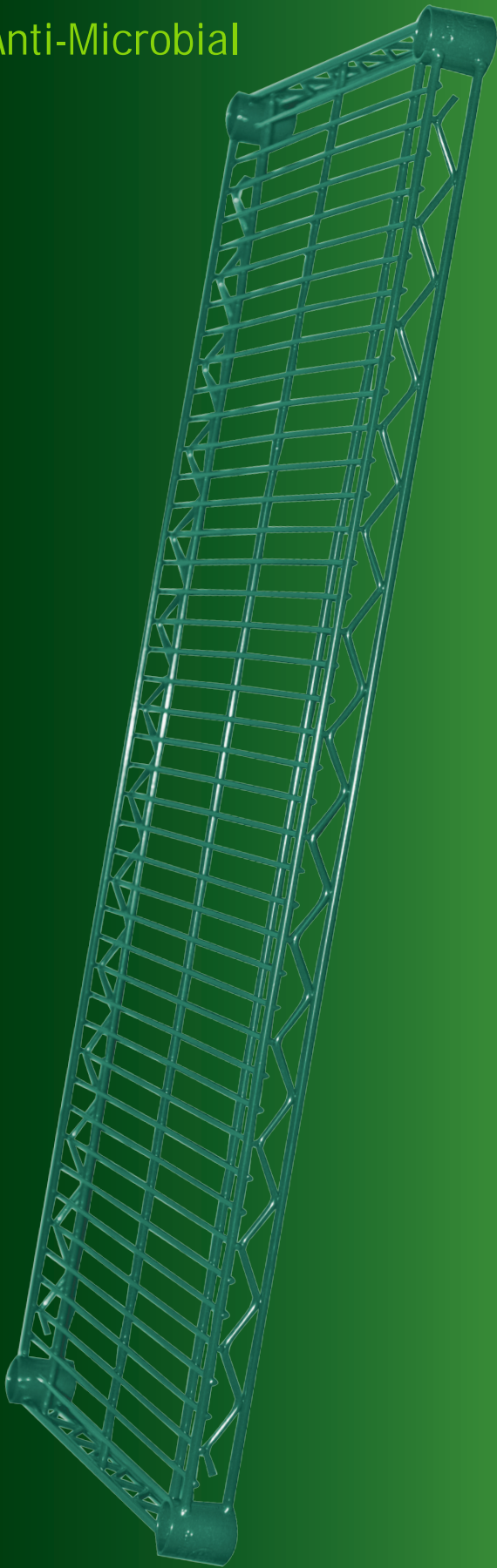


Creative Wire Shelving Configurations

Green Epoxy Anti-Microbial Wire Shelving



Anti-Microbial



Green Epoxy Wire Shelving - 7 Year Warranty

| 14" | | Size | |
|------------|-----------|------|-----------|
| Item # | D x W | | Price Ea. |
| GR1424CWP | 14" x 24" | | \$ |
| GR1430CWP | 14" x 30" | | \$ |
| GR1436CWP | 14" x 36" | | \$ |
| GR1442CWP | 14" x 42" | | \$ |
| GR1448CWP | 14" x 48" | | \$ |
| GR1454CWP | 14" x 54" | | \$ |
| GR1460CWP | 14" x 60" | | \$ |
| GR1472CWP | 14" x 72" | | \$ |
| 18" | | | |
| GR1824CWP | 18" x 24" | | \$ |
| GR1830CWP | 18" x 30" | | \$ |
| GR1836CWP | 18" x 36" | | \$ |
| GR1842CWP | 18" x 42" | | \$ |
| GR1848CWP | 18" x 48" | | \$ |
| GR1854CWP | 18" x 54" | | \$ |
| GR1860CWP | 18" x 60" | | \$ |
| GR1872CWP | 18" x 72" | | \$ |
| 21" | | | |
| GR2124CWP | 21" x 24" | | \$ |
| GR2130CWP | 21" x 30" | | \$ |
| GR2136CWP | 21" x 36" | | \$ |
| GR2142CWP | 21" x 42" | | \$ |
| GR2148CWP | 21" x 48" | | \$ |
| GR2154CWP | 21" x 54" | | \$ |
| GR2160CWP | 21" x 60" | | \$ |
| GR2172CWP | 21" x 72" | | \$ |
| 24" | | | |
| GR2424CWP | 24" x 24" | | \$ |
| GR2430CWP | 24" x 30" | | \$ |
| GR2436CWP | 24" x 36" | | \$ |
| GR2442CWP | 24" x 42" | | \$ |
| GR2448CWP | 24" x 48" | | \$ |
| GR2454CWP | 24" x 54" | | \$ |
| GR2460CWP | 24" x 60" | | \$ |
| GR2472CWP | 24" x 72" | | \$ |
| 30" | | | |
| GR3036CWP | 30" x 36" | | \$ |
| GR3048CWP | 30" x 48" | | \$ |
| GR3060CWP | 30" x 60" | | \$ |
| GR3072CWP | 30" x 72" | | \$ |

Green Epoxy Anti-Microbial Wire Shelving



Green Epoxy Post

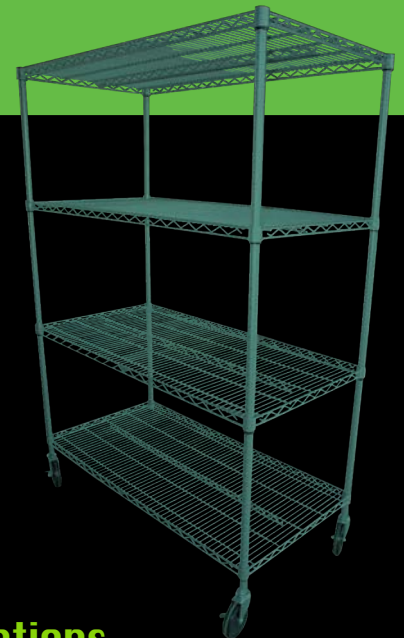
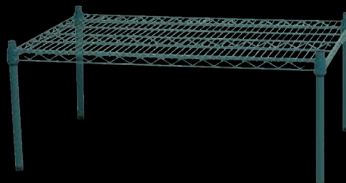
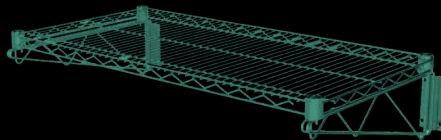
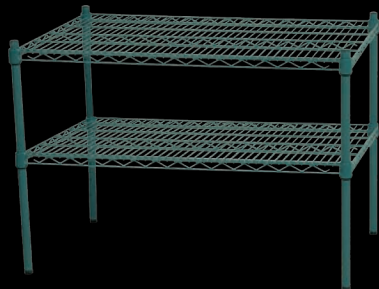
| Item # | Size | Price Ea. |
|---------|------|-----------|
| GR14CWP | 14" | \$ |
| GR34CWP | 34" | \$ |
| GR54CWP | 54" | \$ |
| GR63CWP | 63" | \$ |
| GR74CWP | 74" | \$ |
| GR86CWP | 86" | \$ |

** Other wire accessories sold on page 54.*



Green Epoxy Wall Brackets

| Item # | Size | Qty | Price Ea. |
|--------------|--------------------|-----|-----------|
| GRWB14-CWP | 14" Single Bracket | 2 | \$ |
| GRWB18-CWP | 18" Single Bracket | 2 | \$ |
| GRWB21-CWP | 21" Single Bracket | 2 | \$ |
| GRWB24-CWP | 24" Single Bracket | 2 | \$ |
| GRDWMB14-CWP | 14" Double Bracket | 1 | \$ |
| GRDWMB18-CWP | 18" Double Bracket | 1 | \$ |
| GRDWMB21-CWP | 21" Double Bracket | 1 | \$ |
| GRDWMB24-CWP | 24" Double Bracket | 1 | \$ |

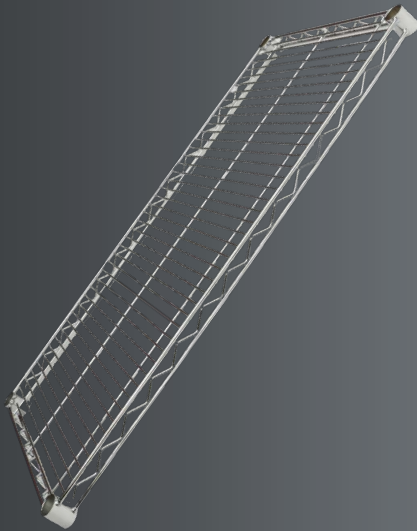


Creative Wire Shelving Configurations

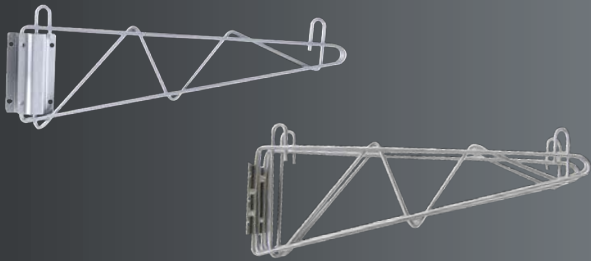
Chrome Wire Shelving



Chrome Wire Shelving - 1 Year Warranty

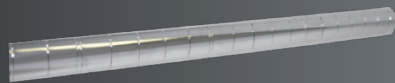


| 18" | | |
|-----------|---------------|-----------|
| Item # | Size D x W | Price Ea. |
| CH1824CWP | 18" x 24" | \$ |
| CH1836CWP | 18" x 36" | \$ |
| CH1848CWP | 18" x 48" | \$ |
| CH1860CWP | 18" x 60" | \$ |
| CH1872CWP | 18" x 72" | \$ |
| 24" | | |
| CH2424CWP | 24" x 24" | \$ |
| CH2436CWP | 24" x 36" | \$ |
| CH2448CWP | 24" x 48" | \$ |
| CH2460CWP | 24" x 60" | \$ |
| CH2472CWP | 24" x 72" | \$ |



Chrome Wall Brackets

| Item # | Size | Qty | Price Ea. |
|--------------|--------------------|-----|-----------|
| CHWB18-CWP | 18" Single Bracket | 2 | \$ |
| CHWB24-CWP | 24" Single Bracket | 2 | \$ |
| CHDWMB18-CWP | 18" Double Bracket | 1 | \$ |
| CHDWMB24-CWP | 24" Double Bracket | 1 | \$ |

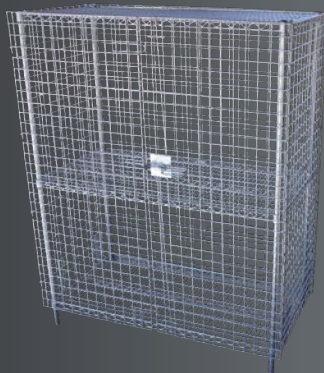


Chrome Posts



| Item # | Size | Price Ea. |
|---------|------|-----------|
| CH63CWP | 63" | \$ |
| CH74CWP | 74" | \$ |
| CH86CWP | 86" | \$ |

** Other wire accessories sold on page 54.*



Security Cages



| Item # | Description | Price Ea. |
|------------|-----------------------|-----------|
| SC36SL-CWP | 36" W x 24" D x 63" H | \$ |
| SC48SL-CWP | 48" W x 24" D x 63" H | \$ |

** Other wire accessories sold on page 54.*

*Additional casters available.
Additional shelves available.*

*Part # HRC-05 see pg. 54.
See first section on current page above.*



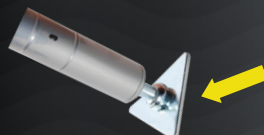
Post Cap

| Item # | Description | Price Ea. |
|--------|-------------|-----------|
| CWP-PC | Sold Each | \$ |



Post Leveler

| Item # | Description | Price Ea. |
|--------|-------------|-----------|
| CWP-PL | Sold Each | \$ |



Foot Plate

| Item # | Description | Price Ea. |
|--------|-------------|-----------|
| CWP-FP | Sold Each | \$ |



Shelf Clips - Set of 4

| Item # | Description | Price Ea. |
|----------|----------------------|-----------|
| CWP-SC-E | Epoxy Shelving Only | \$ |
| CWP-SC-C | Chrome Shelving Only | \$ |

Physically identical items.



S Hooks

| Item # | Description | Price Ea. |
|--------|-------------|-----------|
| CWP-SH | Set of 4 | \$ |



3" Label Holders

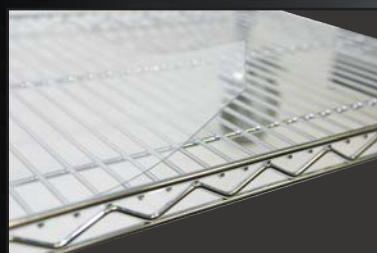
| Item # | Description | Price Ea. |
|--------|-------------|-----------|
| ABM3 | Sold Each | \$ |



5" Caster Set : Two Brake, Two Non-Brake

| Item # | Description | Price Ea. |
|--------|---|-----------|
| HRC-05 | Heavy Duty 5" Caster with Rubber Bumper | \$ |

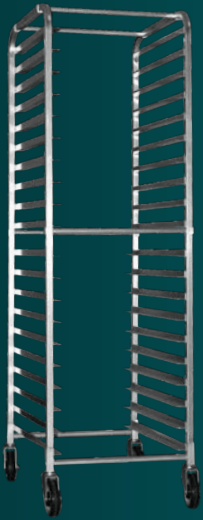
** For wire shelving only.*



Clear PVC Shelf Mats

| Item # | D x W | Price Ea. |
|------------|-----------|-----------|
| SMC1836CWP | 18" x 36" | \$ |
| SMC1848CWP | 18" x 48" | \$ |
| SMC1872CWP | 18" x 72" | \$ |
| SMC2436CWP | 24" x 36" | \$ |
| SMC2448CWP | 24" x 48" | \$ |
| SMC2472CWP | 24" x 72" | \$ |

Aluminum Racks

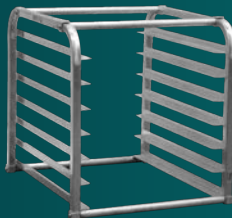
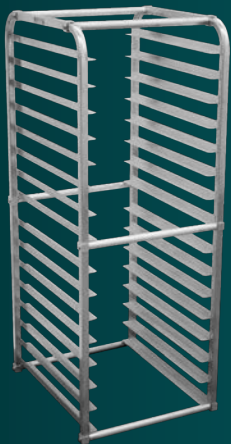


Aluminum Pan Racks

NSF

| Item # | Description | Price Ea. |
|--------------|--------------------|-----------|
| CWP-APR-10EL | 10 Tier w/ Casters | \$ |
| CWP-APR-20EL | 20 Tier w/ Casters | \$ |

** Ships flat.*



Aluminum Refrigerator Pan Racks

NSF

| Item # | Description | Price Ea. |
|-----------|-------------|-----------|
| CWP-RR-07 | 7 Pan | \$ |
| CWP-RR-16 | 15 Pan | \$ |

** Ships flat. Can not put casters on these racks.*

Aluminum Dunnage Racks

NSF

| Item # | Size | Price Ea. |
|---------------|-----------------------|-----------|
| CWP-DR-203612 | 20" D x 36" W x 12" H | \$ |
| CWP-DR-204812 | 20" D x 48" W x 12" H | \$ |
| CWP-DR-206012 | 20" D x 60" W x 12" H | \$ |
| CWP-DR-243612 | 24" D x 36" W x 12" H | \$ |
| CWP-DR-244812 | 24" D x 48" W x 12" H | \$ |
| CWP-DR-246012 | 24" D x 60" W x 12" H | \$ |

** Ships as shown.*





Insert Casters

| Item # | Size | Price Ea. |
|---------------|---|-----------|
| 3B-0050-B HFT | 3" Wheel 1 1/8" Insert <i>For Hot Tables Only</i> | \$ |
| 4B-0050 | 4" Wheel 1 1/8" Insert | \$ |
| 4B-0050-B | 4" Wheel 1 1/8" Insert | \$ |
| 5B-0050 | 5" Wheel 1 1/8" Insert | \$ |
| 5B-0050-B | 5" Wheel 1 1/8" Insert <i>For Tables Only</i> | \$ |

Polypropylene wheel, polyurethane hub.

Universal Plate Casters for Fryer & Range

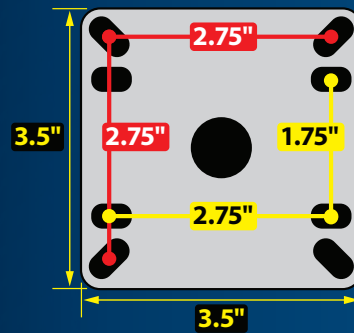
| Item # | Size | Price Ea. |
|----------|-------------------------------|-----------|
| 5SB-3535 | 3 1/2" Plate Casters w/ Brake | \$ |
| 5SB-4040 | 4" Plate Caster w/ Brake | \$ |

Hard rubber.



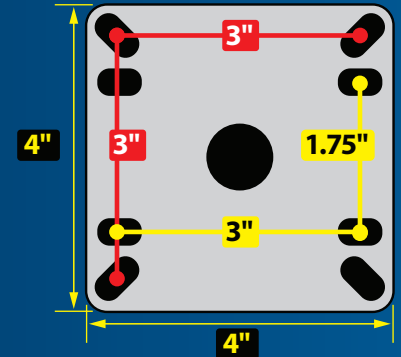
5SB - 3535

Fryer



5SB - 4040

Range



Grey Thermoplastic Foot Insert

| Item # | Size | Price Ea. |
|------------|--------|-----------|
| 1FI-HPL-01 | 1 5/8" | \$ |

** For Tables & Sinks.*



Stainless Steel Adjustable Foot Insert

| Item # | Size | Price Ea. |
|-----------|--------|-----------|
| 1FI-HSS02 | 1 5/8" | \$ |

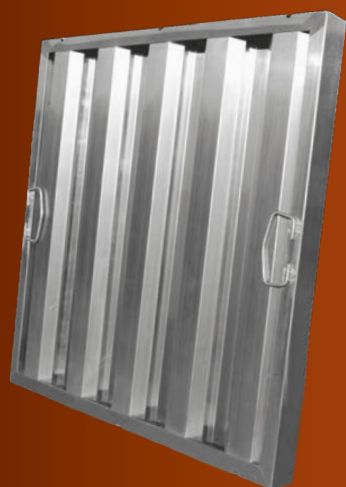
** For Tables & Sinks.*



Hood Filters, Carts, & Plastic Cart



Stainless Steel Hood Filters



| Item # | Size | Price Ea. |
|--------|-----------|-----------|
| | H x W | |
| F1016S | 10" x 16" | \$ |
| F1020S | 10" x 20" | \$ |
| F1216S | 12" x 16" | \$ |
| F1220S | 12" x 20" | \$ |
| F1225S | 12" x 25" | \$ |
| F1616S | 16" x 16" | \$ |
| F1620S | 16" x 20" | \$ |
| F1625S | 16" x 25" | \$ |
| F2016S | 20" x 16" | \$ |
| F2020S | 20" x 20" | \$ |
| F2025S | 20" x 25" | \$ |
| F2516S | 25" x 16" | \$ |
| F2520S | 25" x 20" | \$ |

Packed in Cases of 6.



3 Tier Plastic Bus Cart

| Item # | Size | Price Ea. |
|-------------|-----------------------|-----------|
| BC-100B-CWP | 16" D x 28" W x 38" H | \$ |



3 Tier Stainless Steel Carts



| Item # | Description | Price Ea. |
|------------|---------------------|-----------|
| UC-1630S3A | 24 Gauge, 16" x 30" | \$ |
| UC-1834M3A | 24 Gauge, 18" x 34" | \$ |
| UC-2037L3B | 22 Gauge, 20" x 37" | \$ |

201 stainless steel.



2024

PRODUCT CATALOG

CALL
FAX

865.769.0157
865.769.3004

Please Email Purchase Orders to: info@makline.biz