



DARBY FOREMAN

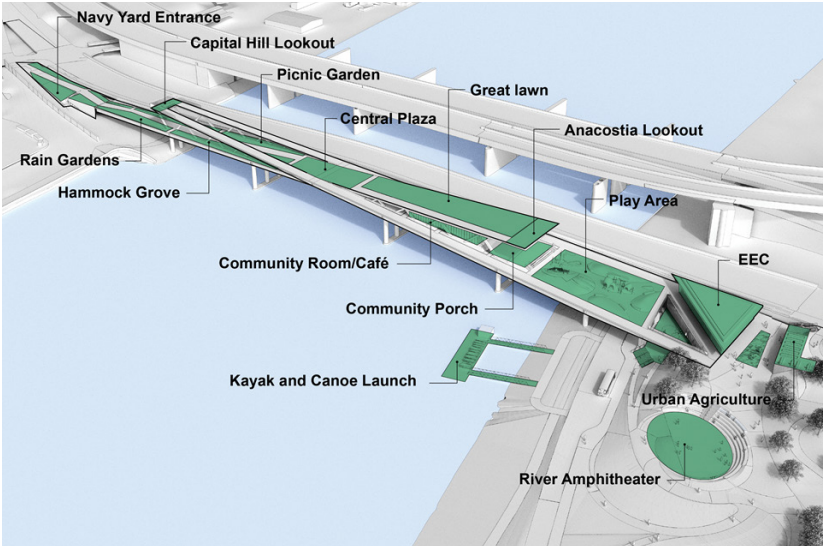
+1 415 793 2614

darbyforeman@gmail.com

11TH STREET BRIDGE PARK
PROFESSIONAL (65% ENGINEERING)
with OMA

This pedestrian bridge builds upon the piers of abandoned infrastructure and links Anacostia with the Capitol Riverfront. The iconic form creates an upper deck with vantage points and a lower deck with various public park programs. The bridge structure also supports two buildings, including an Environmental Education Center and Cafe.

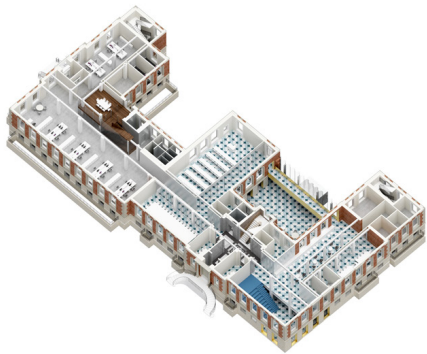
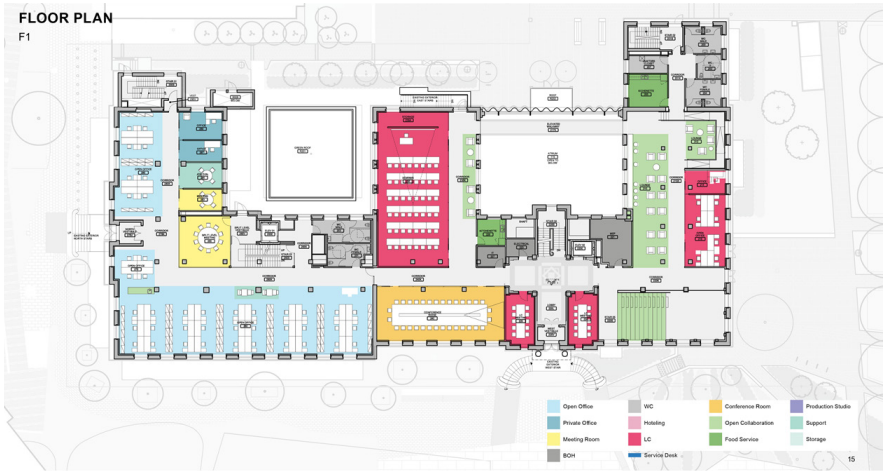
Role: Project Architect



UNIVERSITY OF TORONTO
FITZGERALD BUILDING
PROFESSIONAL (EST COMPLETION 2022)
with OMA

Responsible for all CA related to design intent for the renovation and expansion to this 5-story, building from 1927 with Heritage designation. Due to a budget surplus created by extensive value engineering during CDs, a number of key features are being designed and returned to the 10,000SF project during the construction phase through change notices.

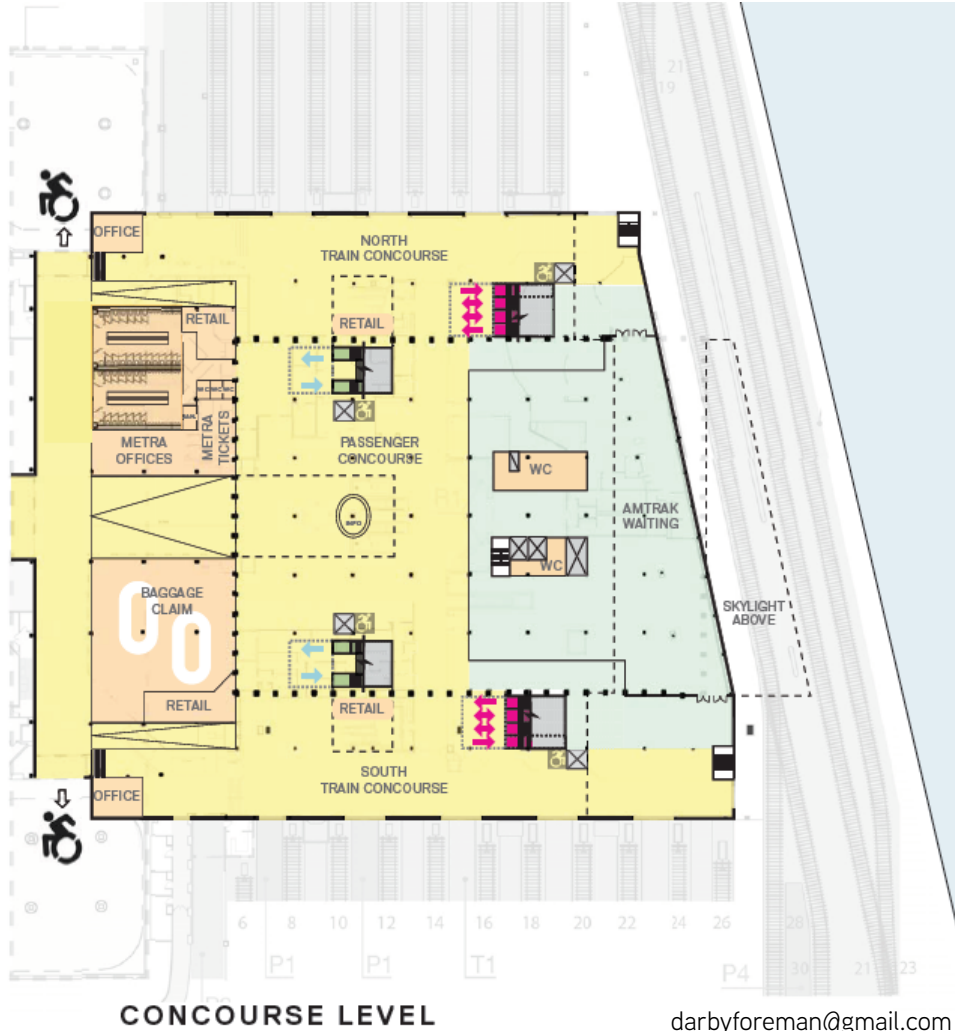
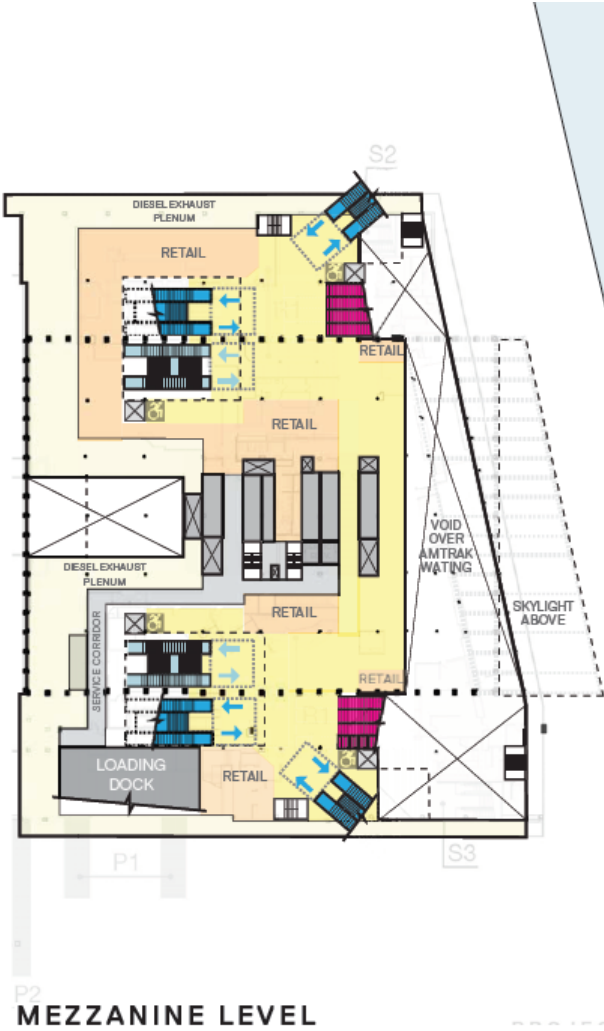
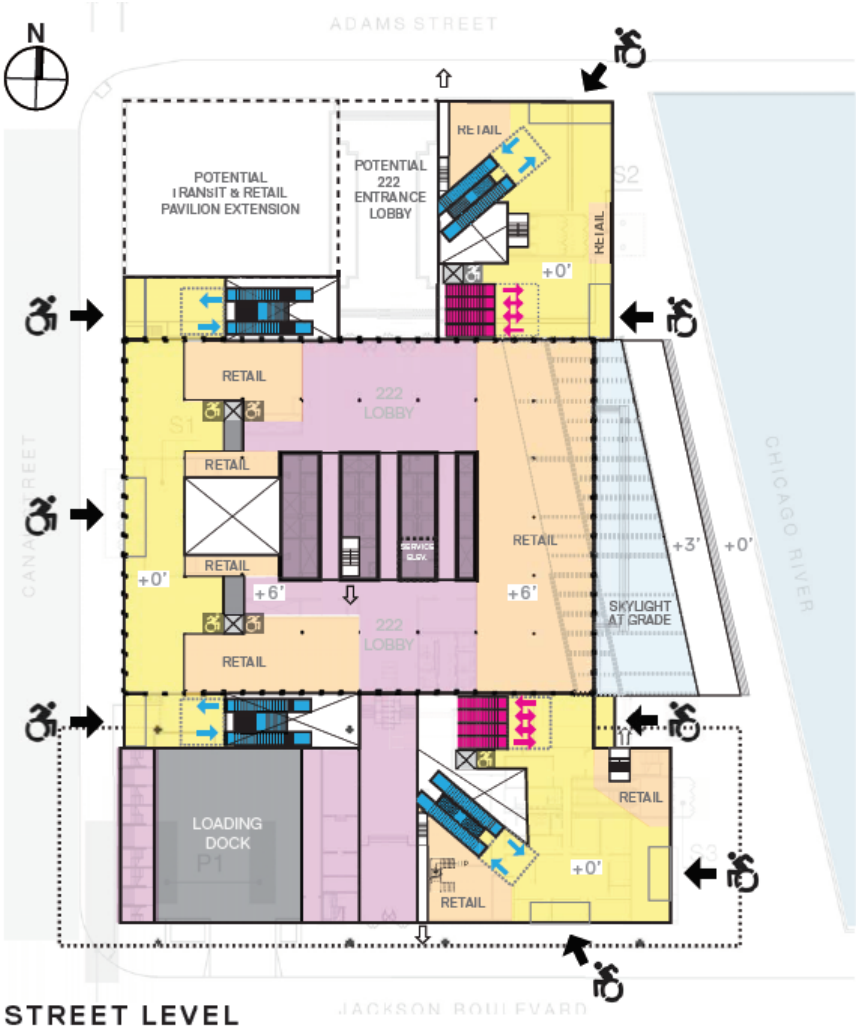
Role: Project Architect



CHICAGO UNION STATION
PROFESSIONAL (30% ENGINEERING)
with Grimshaw

I authored the architectural portion of the Facility Development Plan report, including extensive analysis of program and station accessibility. I also was responsible for leading the completion of schematic level deliverables for a redevelopment plan for the station with goals to improve accessibility, passenger circulation, retail area, and natural light and views.

Role: Project Architect



23RD ST RESIDENCES

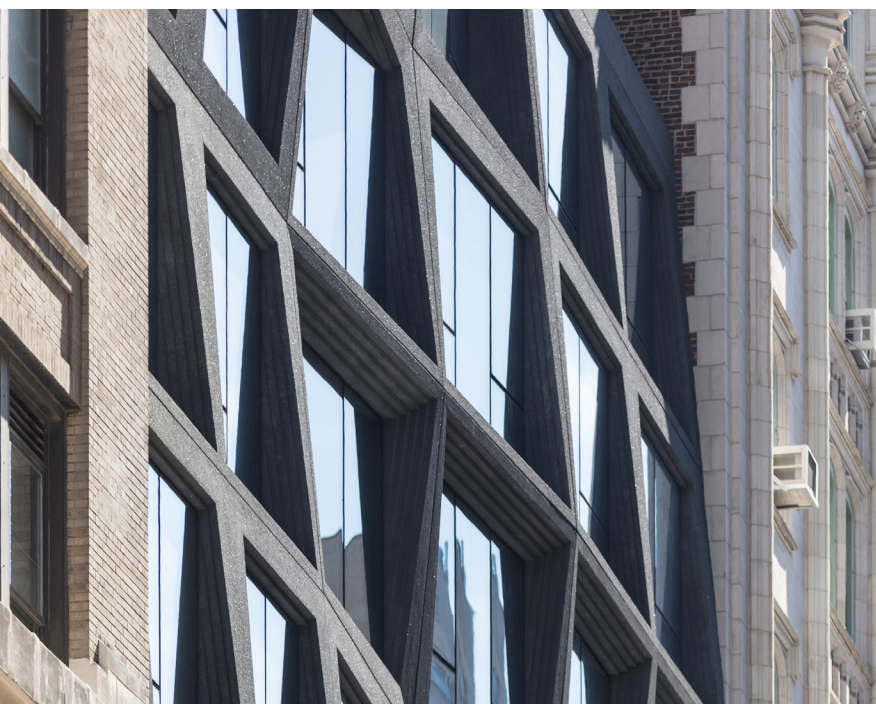
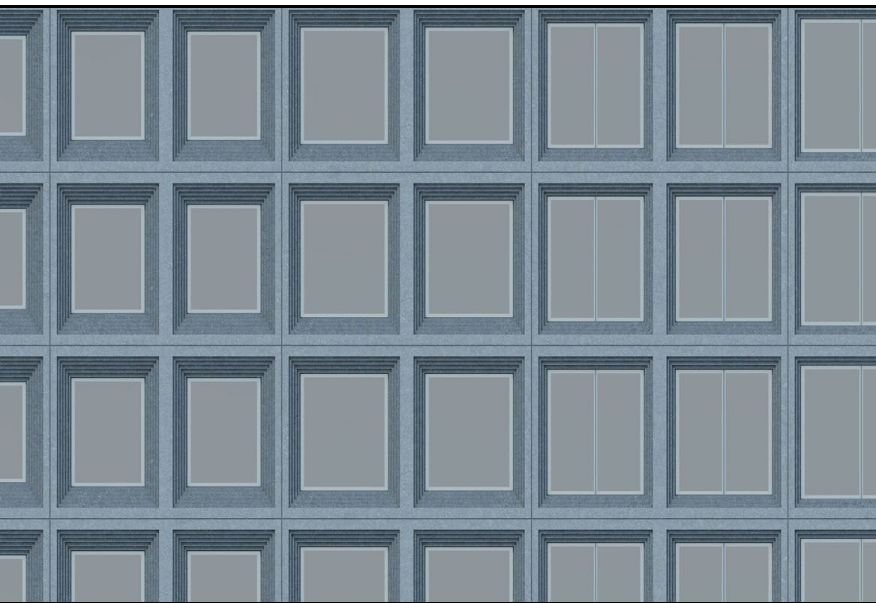
PROFESSIONAL (COMPLETED)

with OMA

We designed a 225,200 SF condominium building for Toll Brothers. The building will contain 122 units and will be OMA's first completed building in New York.

I was primarily responsible for developing and coordinating the buildings precast facade, as well as the lobby and amenity spaces.

Role: Senior Architect



MANUS X MACHINA

PROFESSIONAL (OPEN 2016)

with OMA

We designed a 18,300 SF ghost cathedral for the Metropolitan's Museum of Art annual Costume Institute exhibition.

The exhibition is constructed in the Lehman wing, an octagonal addition of 1975; our design addressed challenges such as excessive daylight, a corridor condition lacking dedicated display walls and an eclectic material palette . It was also important to complement, not compete with the 170 intricate garments under the theme exploring the history handmade and the machine-made.

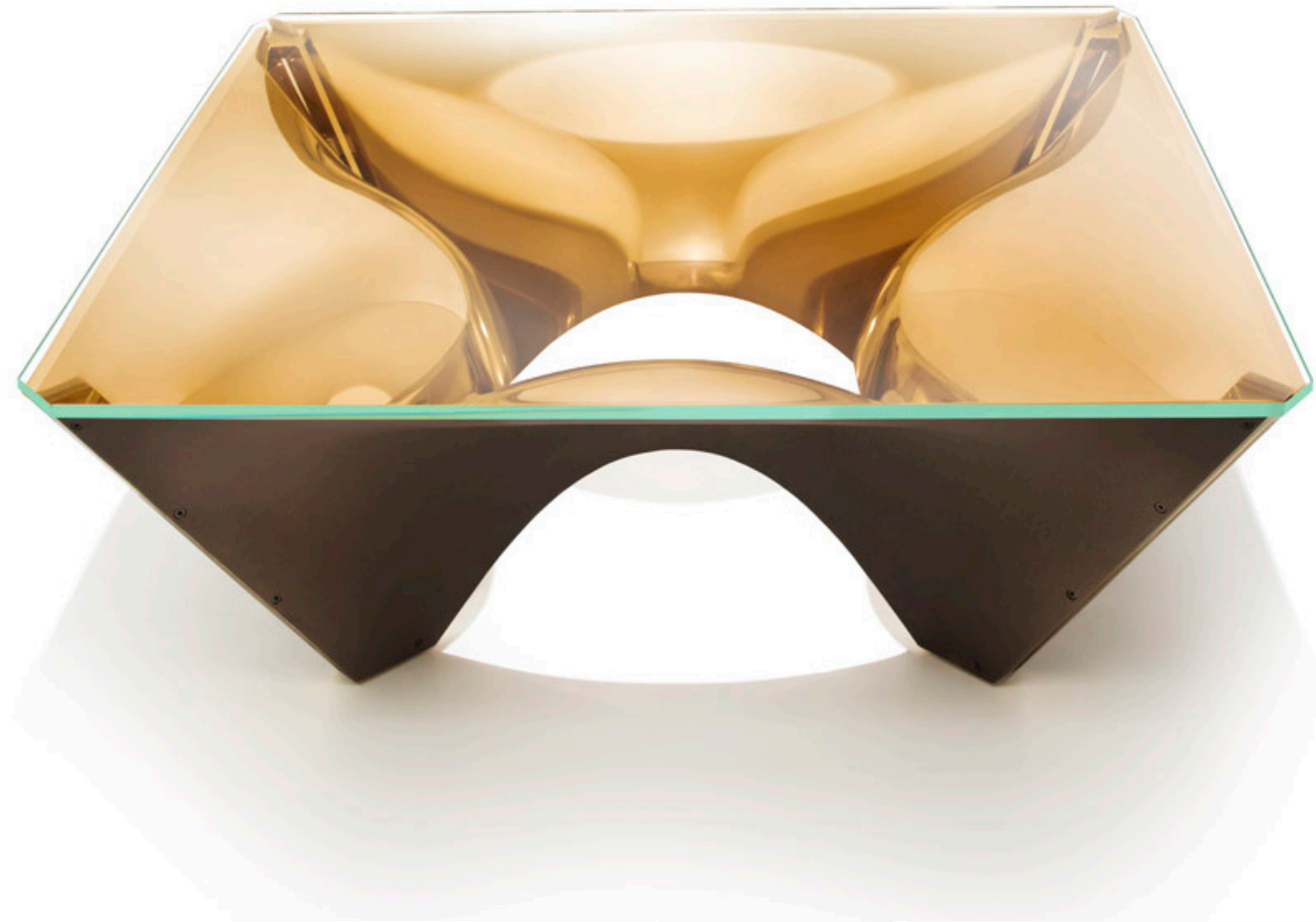
Role: Project Architect



KNOLL FURNITURE LINE
PROFESSIONAL (2014, IN STORES)
with Adjaye Associates

Mass market furniture line
for Knoll. The line includes
side chairs in cast aluminum,
nylon, a cast metal coffee
table

Role: Project Manager



SMITHSONIAN NATIONAL MUSEUM OF AFRICAN AMERICAN HISTORY AND CULTURE

PROFESSIONAL (OPEN 2016)

with Adjaye Associates

A new 420,000 SF Smithsonian museum on the mall in Washington DC. I developed the fabrication 3d model for the buildings bronze filigree envelope.

Role: Design Technology Lead

