



ACEL

Leading the Electric Marine Revolution



Designed for Performance



Safe, Reliable & Sustainable



Leading Technology

ACEL ECOSYSTEM

- ✦ Outboard Motor
- ✦ Onboard Screen
- ✦ Touchless Key
- ✦ Battery
- ✦ Throttle
- ✦ Charger



OUTBOARD MOTOR

- ✦ Highest-in-class torque and fastest F-to-R response
- ✦ Put an end to CW/CCW engines
- ✦ Gears undamaged by fast changes
- ✦ Gearbox-free forward/backward propulsion
- ✦ Micro-click rotation changes
- ✦ Acel-patented CPU Inverter Technology enables overload and fire monitoring



- ✓ Customizable Battery
- ✓ Patented Technology
- ✓ Advanced Inverter Control



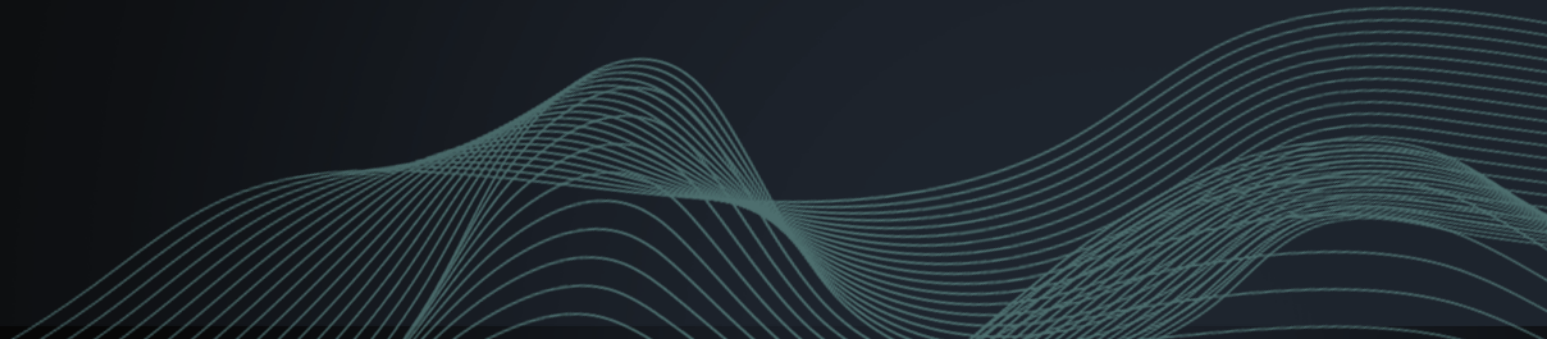
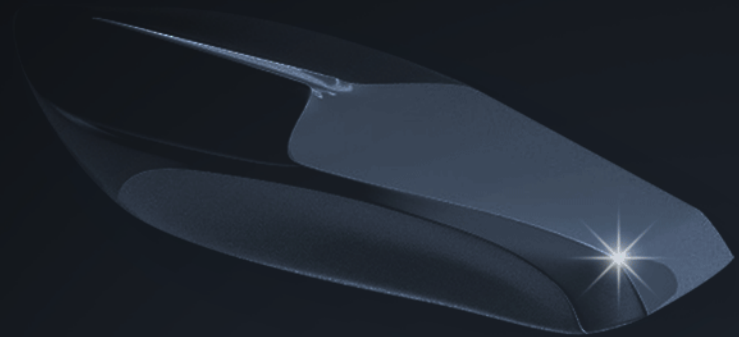


ONBOARD SCREEN

- Update system functions via internet just like any smartphone app
- Full infotainment system attainable via software updates
- Full mobile device connectivity and integration
- Comprehensive charging controls: current charge, charge time and charge scheduling
- Driving mode control: economy, sport
- Full GPS and Sea Chart functionality
- Never buy another chart plotter again

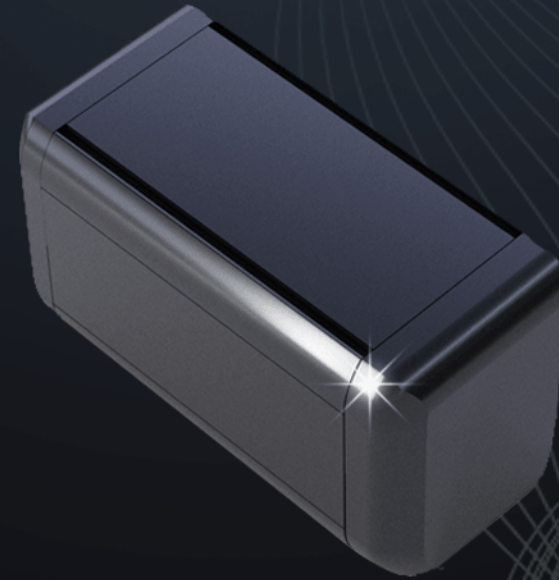
TOUCHLESS KEY

- Unique touchless design
- IP67 construction with premium aluminium coating
- Designed to float if dropped in water
- Full CPU connectivity and integration
- Lost key protection and programming
- Long-range RFID technology maximizes battery life





BATTERY



- ▣ Take full control of your battery
- ▣ Customizable power for propelling larger boats and yachts
- ▣ Remaining charge time and range clearly displayed
- ▣ Warning light when specified time or range surpassed
- ▣ Never run out of battery while out at sea
- ▣ Supercharger based on Acel-patented technology
- ▣ Sub-zero temperature protection for prolonged charge and performance

CHARGING OPTIONS

Home charging and plug included as standard

15A charger available as optional extra

Other charging options:

- Shore
- EV

THROTTLE

- Uniquely designed, cable-free digital throttle
- Integrated Connectivity 2 Sensor options
- Control entire system or throttle only
- LED lighting for confident use in all conditions
- Durable waterproof construction
- Emergency STOP and power control override features



PRODUCT & WARRANTY PACKAGE

7 YEARS

500 HOURS



Motor
Inverter

5 YEARS

**300 DISCHARGE
CYCLES**



Battery

3 YEARS

200 HOURS



Onboard Computer
Screen
GearBox
DriveShaft
Power Tilt
Everything Else

5 YEARS

350 HOURS



Battery
Battery Connection Cable
Throttle
Key Sensors
12V Power Supply
Charger
Heat Exchange

Parts that have corroded are not covered under warranty*

FAQ

Q. Do you have any competitors in the electric outboard market?

There are other electric outboard producers but none of them offer the same standard of technology as Acel, offering outboards up to 80hp only. Thanks to our leading technology, we produce outboard motors that exceed 80hp. Our competitors also do not offer onboard screens, 12V power supplies or push boat design optimization.

Q. What motors do competitors offer?

Competitors offer mostly 50hp electric outboard motors, with some offering 80hp versions. We manufacture all of our components and exercise full control over our supply chain, which means we can customize all orders to buyer needs – including onboard screens, touchless keys and custom batteries. Our competitors offer no customization.

Q. How many batteries are required?

Our electric outboard motors require a single battery that consists of seven 48V battery packs. Our battery offerings are entirely customizable to meet the needs of your vessel.

Q. Do I need a 'kicker motor' for situations in which I find myself stranded?

One of the major benefits of electric outboard motors is that they never break down, as opposed to gas motors that fail frequently. Our electric motors have a minimum lifespan of 10,000 hours and feature a 12V power supply for leading reliability in all conditions. Our motors do feature a kicker, which can be charged as a back-up if desired.

Q. How long does the battery last, how far can I travel using it and does it heat up?

Our electric outboard motor battery packs are customizable from 3-5 hours and beyond if needed. We offer specifically designed lithium batteries that are far smaller and more advanced than AGM car batteries – as well as feature safety-conscious anti-overheating properties.

Q. Is the battery replaceable and how is installation?

Batteries consist of seven individual 48V battery packs and have been designed for easy replacement as and when needed. Whether re-powering or installing a new engine, our electric outboard motors and batteries have been designed with effortless installation in mind.

Q.How does the battery work?

Our batteries are specified to meet 2500 Charge and Discharge Cycles, which refers to the number of times that they can be fully charged and discharged to 20%. This means that even with everyday use of your boat, your battery can last up to seven years.

Our standard battery pack provides around three hours of cruising at 70% throttle (in electric engines, the battery is off during idle mode). Our extended battery pack will provide around five hours at 70% throttle. We can customize our batteries to your exact needs – just share your ideas with us and we will be happy to make them a reality.

Q.Are battery backups a possibility?

Yes, it is possible to install two or more battery packs depending on the size of your outboard motor and boat.

Q.What certifications do your products hold?

All of our products are TS16949 Standard, the leading standard for all EVs including Tesla vehicles. All of our components are IP67-rated (including batteries) and will still function after being submerged in 0.5 meters of water.

Acel's Naval Architect, who leads the quality standard of our products, is fully IMCI-certified.

Q.Where can I charge my battery?

Charging of our outboard motor batteries can be conveniently conducted overnight at home via the included 12V supply or using connectivity at the dock. EV supercharging is also available via custom order.

Q. How big are the batteries? We have 18 to 20 foot boats with Electric Outboards but they use troll motors. How does it compare to the 224 or 227 Deep Cycle Batteries?

To compare the two would be like comparing 1990s car technology with Tesla technology in terms of weight, power and advancement. Our lithium ion batteries provide the same power output as AGM car batteries whilst weighing 4x less.

To discover more about the difference in batteries, we recommend reading this in-depth article:

<https://www.victronenergy.com/blog/2015/03/30/batteries-lithium-ion-vs-agm/>

Q. How reliable is the battery?

We use the same advanced technology in our electric outboard batteries as Tesla deploys in its Model 3 EV – and they are every bit as reliable. Our battery cells are 100% certified by the ACCREDITED World Boating Association. In addition, Acel possesses a battery monitoring technology patent that features in the latest EV cars.

Q.How do I monitor battery charge?

Our batteries feature onboard computers (similar to Tesla) that display current battery levels, consumption rates, range limits and much more. Our computers are 4G, WiFi and Bluetooth-enabled. We are partnered with computer specialists, Telus, and continually working on providing best-in-class data coverage.

Q. What do I do if my battery stops working?

Our batteries are designed so that any qualified electrician can use the manual to rewire the battery and have your voyage back on track. If your boat features solar panel power generation then this can also be used to temporarily power your battery.

Q. I'm interested – can I trial before purchasing?

Yes, we display our absolute confidence in our electric outboard motor and battery technology by providing a 30-day guaranteed return trial period. Please check Acel's customer conditions before acquiring a motor for testing.



www.acelpower.com

📍 Airport Square ,West 73rd Avenue, Vancouver, Canada

☎ +1 604 424 8228; EXT 828 | **in f** 📷 acelpower