

naturekast  
weatherproof cabinetry

Create an outdoor kitchen  
that rivals even the finest  
indoor kitchens.



Door style: CONTEMPO | Finish: RAVEN ASH. Design & Installation: First Coast Supply



Loved by  
designers and  
homeowners alike

NatureKast presents a full line of outdoor  
cabinets to accommodate everything  
from built-in barbecues to ceramic  
grills, sinks & warming drawers  
... we have it all!



Door style: SLAB | Finish: COBALT LINEN. Design & Installation: Imperial Kitchens of Fort Meyers



Door style: RUSTIQUE | Finish: HARVEST SHALE



# slab, shaker, rustique, radium, louver, & contempo finishes

## High Density Resin Finishes

									
AGED BARNBOARD	ARCTIC SLATE	AUTUMN MOSS (SILVER BIRCH)	CHARRED RUM	COASTAL SAGE	COBALT LINEN	ESPRESSO	FOSSIL GREY	HARVEST SHALE	LUNAR WHITE (SUPER WHITE)
									
MIDNIGHT TIDE	NATURAL BLONDE	NUTMEG	PICKET FENCE	RAVEN ASH	SALTED SLATE	SMOKED MAHOGANY	TOASTED GINGER	WARMED TAUPE	CUSTOM PAINTED
									
WEATHERED CHARCOAL	WEATHERED DESERT TAN	WEATHERED DOCKSIDE	WEATHERED DRIFTWOOD	WEATHERED GRAPHITE					

Choose a door style & finish that embodies your style

Distinctive door styles and finishes are available to entice and inspire. An extensive range of panels, moldings and fillers can create a refreshing change from traditional stainless steel and masonry construction.







1/2" Thick High-Pressure Laminate (Phenolic Resin) Door Style & Finishes



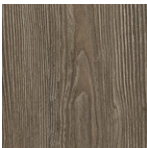
PRUSSIAN  
CELESTIAL BLUE



UTRECHT  
ZOUTE DROP



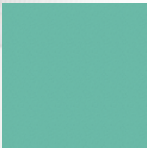
MARSEILLES  
SILVER OAK



DARTMOOR  
SESSILE OAK



BALKANS  
BLEACHED WALNUT



CORFU  
COASTAL AQUA



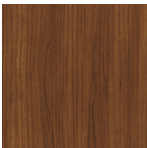
FLORENCE  
GALLERY GREY



PARISIAN  
CASHMERE GREY



BUDAPEST  
BLACK WALNUT



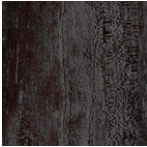
MARMARA  
DEEP WALNUT



LONDON  
ASHEN GREY



DOVER  
CLIFF-SIDE WHITE



PENRHYN  
MINERALIZED SLATE



BRUSSELS  
DEEP WENGE

\*Additional colour options are available with a longer lead-time in the Euro SPECIAL ORDER Collection.

metro

3/4" Thick Marine Grade High-Density Polyethylene (HDPE) Door Style & Finishes



NIAGARA MIST



MUSKOKA FOG



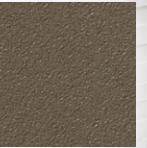
CAVENDISH CLAY



THUNDER BAY  
FLINT



ATHABASCA DUNE



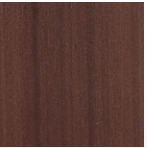
ROCKY RIDGE



ALGONQUIN FAWN



YUKON SHALE



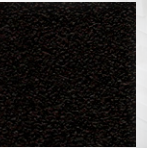
UMBER LAKE



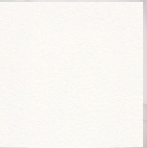
ALBERTA WHEAT



GEORGIAN BAY



QUEBEC GRAPHITE



PELEE ISLAND  
PEARL



Door style: METRO | Finish: MUSKOKA FOG  
Design & Installation: Outdoors Outdoor Kitchens & Cabinetry



# faux wood door styles

Slab



Simple and streamlined.  
Flat slab door with integral edge profile.

Shaker



Talk about versatile!  
Mitered rails and stiles with inset panel.

Rustique



A signature look for a unique style.  
Mortise & tenon, flat panel and applied molding.

Euro (HPL)



Minimalist. Sophisticated. Modern.  
½" Thick slab door with ebony edges.

Louver



A classic door that makes a statement.  
Mortise & tenon joints with louvers.

Radium



A softer take on a contemporary slab door.  
Rift-cut oak slab with 1 ¼" eased edges.

Contempo



Stylish and oh so contemporary.  
¾" Aluminum frame with resin panel.

Metro (HDPE)



Where practicality meets design simplicity.  
¾" Slab door with micro-chamfered edge.





perfecting the art  
of outdoor living.

[www.naturekast.com](http://www.naturekast.com) | Phone: 844.880.6314

