

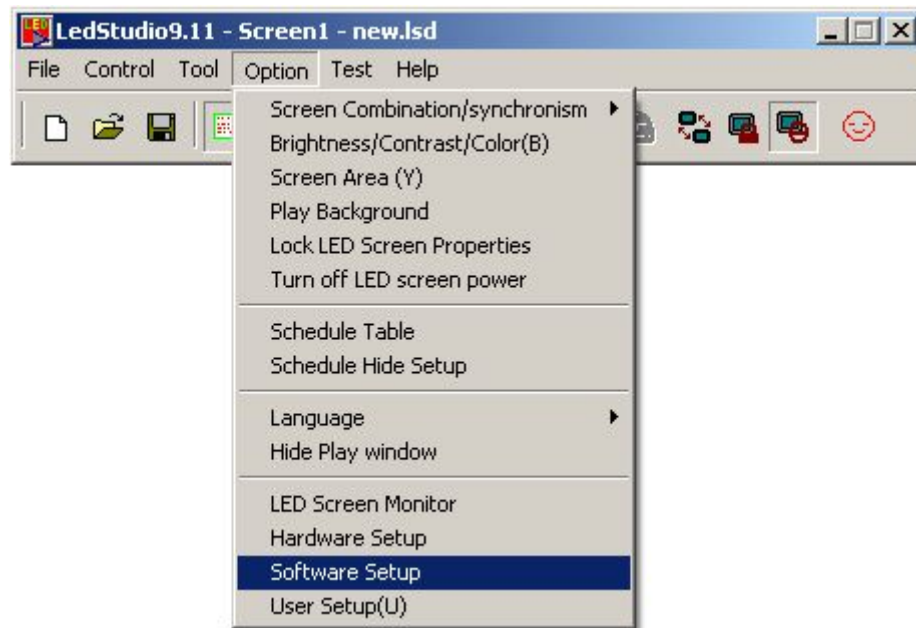


**Shenzhen Linsn Technology Development Co., Ltd.**  
Floor 4, Building7, Zone 2, Baiwangxin Industrial Park, Xili Town, Nanshan District, Shenzhen  
Post code: 518055 TEL: +86-755-86183590 FAX: +86-755-86183597

## Instruction of Firmware Upgrade

All the hardware setups are through the software—LedStudio.

Click the “software setup”, as shown in below figure;



And then will appear a dialog box, as shown in below figure;



**Shenzhen Linsn Technology Development Co., Ltd.**

Floor 4, Building7, Zone 2, Baiwangxin Industrial Park, Xili Town, Nanshan District, Shenzhen  
Post code: 518055 TEL: +86-755-86183590 FAX: +86-755-86183597

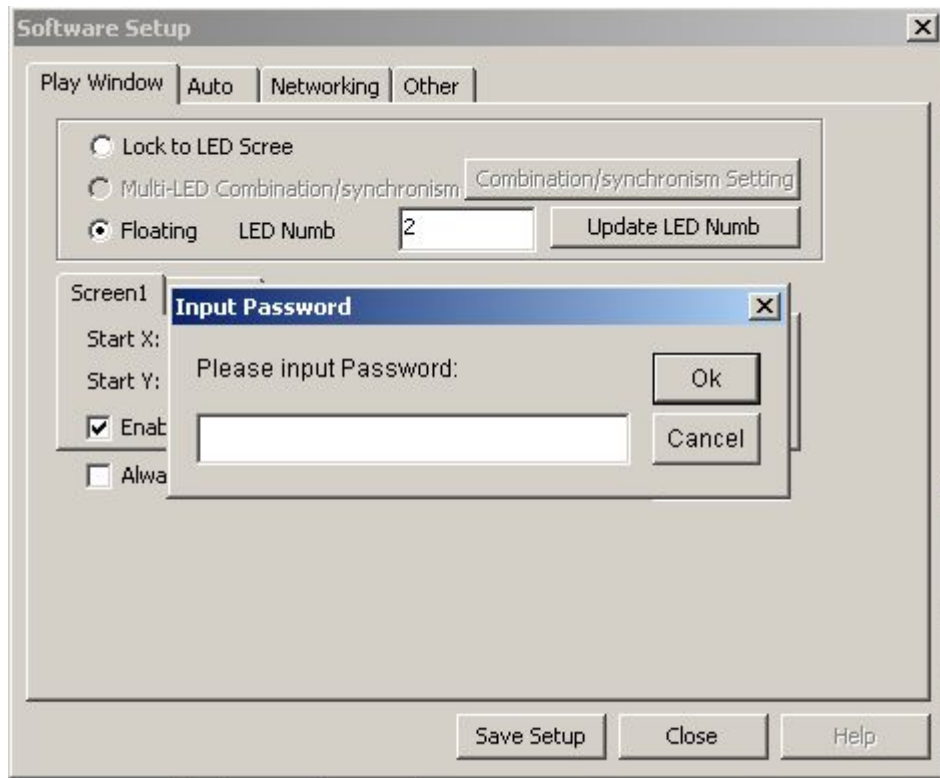
The image shows a 'Software Setup' dialog box with a blue title bar and a close button. It contains several tabs: 'Play Window', 'Auto', 'Networking', and 'Other'. The 'Auto' tab is selected. Inside the dialog, there are three radio buttons: 'Lock to LED Scree', 'Multi-LED Combination/synchronism', and 'Floating'. The 'Floating' option is selected. To the right of the 'Floating' option is a text field labeled 'LED Numb' containing the value '2', and a button labeled 'Update LED Numb'. Below these is a section with two tabs: 'Screen1' and 'Screen2'. The 'Screen1' tab is selected. It contains four text fields: 'Start X' (0), 'Start Y' (0), 'Width(W)' (384), and 'Height(H)' (120). Below these fields is a checked checkbox labeled 'Enable Change By Mouse'. At the bottom of this section is an unchecked checkbox labeled 'Alwayon top'. To the right of this checkbox is a text field labeled 'Frames' containing the value '30'. At the bottom of the dialog are three buttons: 'Save Setup', 'Close', and 'Help'.

As soon as the above dialogue box appears, input “linsn”, then password “168”.



**Shenzhen Linsn Technology Development Co., Ltd.**

Floor 4, Building7, Zone 2, Baiwangxin Industrial Park, Xili Town, Nanshan District, Shenzhen  
Post code: 518055 TEL: +86-755-86183590 FAX: +86-755-86183597



(Computer screen shows nothing when inputting “linsn” by keypad.),  
then enter setup dialog box, as shown in below figure



**Shenzhen Linsn Technology Development Co., Ltd.**  
Floor 4, Building7, Zone 2, Baiwangxin Industrial Park, Xili Town, Nanshan District, Shenzhen  
Post code: 518055 TEL: +86-755-86183590 FAX: +86-755-86183597

Click “Default” then click “Save on sender”, see whether the sending card works now.

If not, the following is the **hardware upgrade steps**:

## **1. Receiving card firmware upgrade**

Make sure the cable connection and signal communication between sending card and receiving card is GOOD. Red light on, and green light blinking on both cards.

Receiving card set to be, B port in and A port out.

If power off or lost connection during frimware upgrade, the cards need



**Shenzhen Linsn Technology Development Co., Ltd.**  
Floor 4, Building7, Zone 2, Baiwangxin Industrial Park, Xili Town, Nanshan District, Shenzhen  
Post code: 518055 TEL: +86-755-86183590 FAX: +86-755-86183597

to send back to linsn for reprogram.

## 2. Sending card firmware upgrade

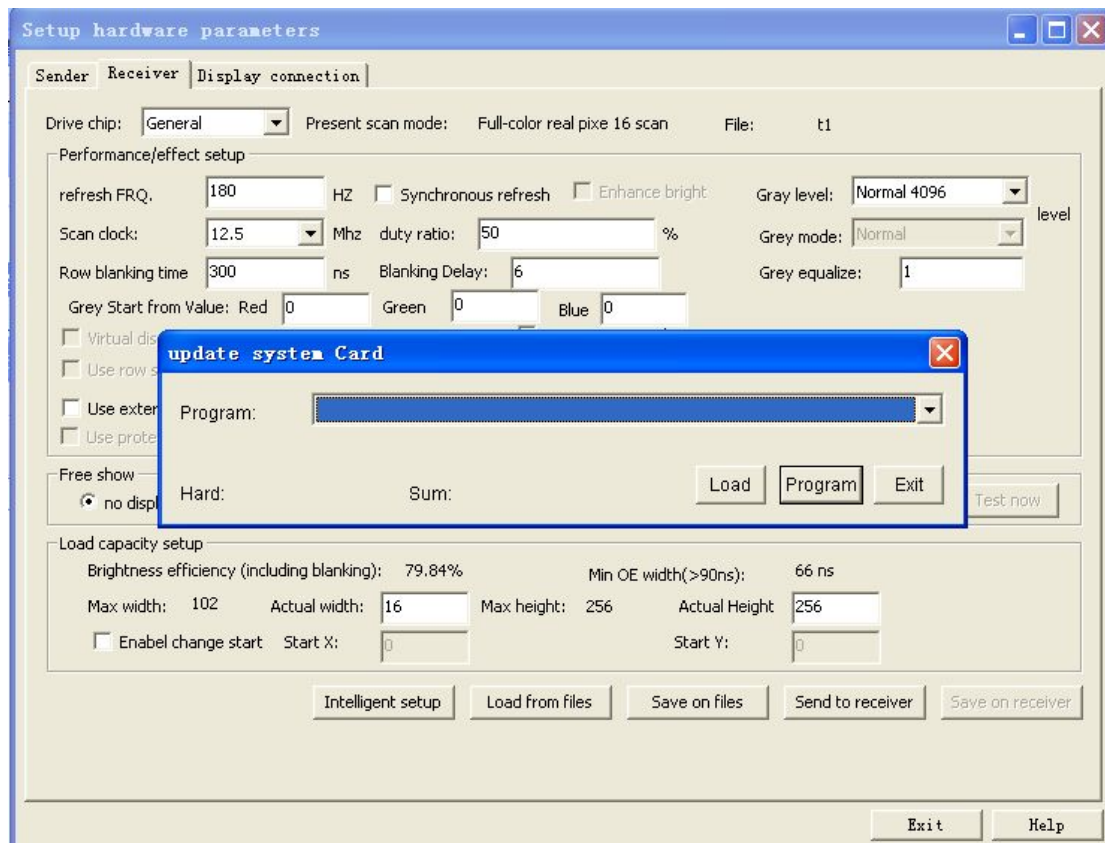
Disconnect output to receiving card, check the light indicators, red light on, green light blinking.

Click “Receiver” page and then input “cfxoki” by keypad.



**Shenzhen Linsn Technology Development Co., Ltd.**  
Floor 4, Building7, Zone 2, Baiwangxin Industrial Park, Xili Town, Nanshan District, Shenzhen  
Post code: 518055 TEL: +86-755-86183590 FAX: +86-755-86183597

After input “cfxoki” the following window appears:



Click Load, locate the .bin file, then click Program to burn in the .bin file.

During upgrading, make sure power on and communication is good.

If power off or lost connection during frimware updating, the cards need to send back to linsn for reprogram.

After done, **power off** then power up the sending card/receiving card.

If a number of receiving cards are connected together for the firmware



**Shenzhen Linsn Technology Development Co., Ltd.**

Floor 4, Building7, Zone 2, Baiwangxin Industrial Park, Xili Town, Nanshan District, Shenzhen

Post code: 518055 TEL: +86-755-86183590 FAX: +86-755-86183597

upgrades at the same time, it is suggested LOAD and PROGRAM twice,  
then **Power off**.

If power on after power off receiving card, the green light of receiving card does not blinking/flashing. It means the program of receiving card is lost. The receiving card needs to be sent back to Linsn for reprogram.

**IMPORTANT:** **One** receiving card at a time for firmware upgrade is recommended.