

Padel Sport Facilities 2024

SMART PADEL.ASIA

v6

**INOVATIVE PERFORMANCE
& DURABILITY**

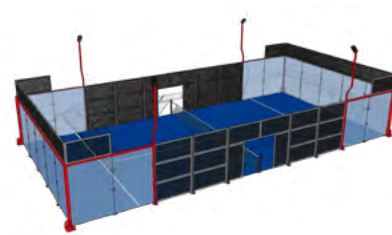
Distributed and
Installed by



OUTDOOR MODELS

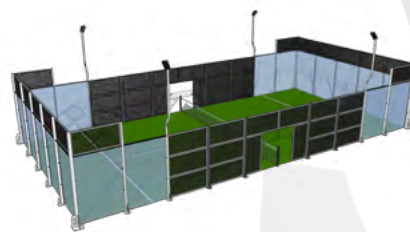
01

ECO_M_PANORAMIC



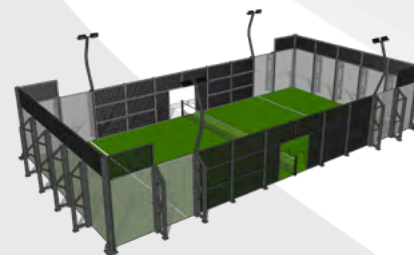
02

ECO_M_CLUB



03

HURRICANE



INDOOR MODELS

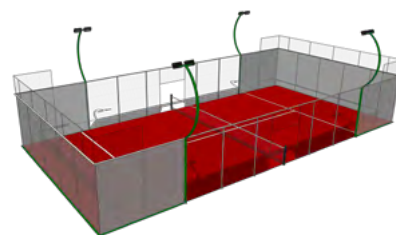
04

ECO_M_PANORAMIC



05

VISION_PRO



06

PADEL_COVE



High quality padel courts installations in Asia.

We provide an array of different Padel court models which can be modified to fit our clients needs. SmartPadel and Seara Sports Systems manufacture and install the most innovative Padel courts in Asia. From planning and design to delivery and installation, SmartPadel and Seara Sports Systems have developed an effective plan that meets your needs and defines your objectives. We install and manufacture High Quality and Secure Padel courts, always with players in mind. SmartPadel is able to meet the standards and regulations set by the International Padel federation, as well as national codes. The Padel court is 20m long and 10m wide, surrounded by glass and wire mesh walls. The flooring is synthetic turf or carpet. A net and two service squares constitute the playing field (no Sideline Alley or No Man's Land). We create reinforced structures with anti-injury systems. All reinforcement beams are powder coated for longevity. Courts also include high quality turf, LED lights and secured tempered glass (12 mm).

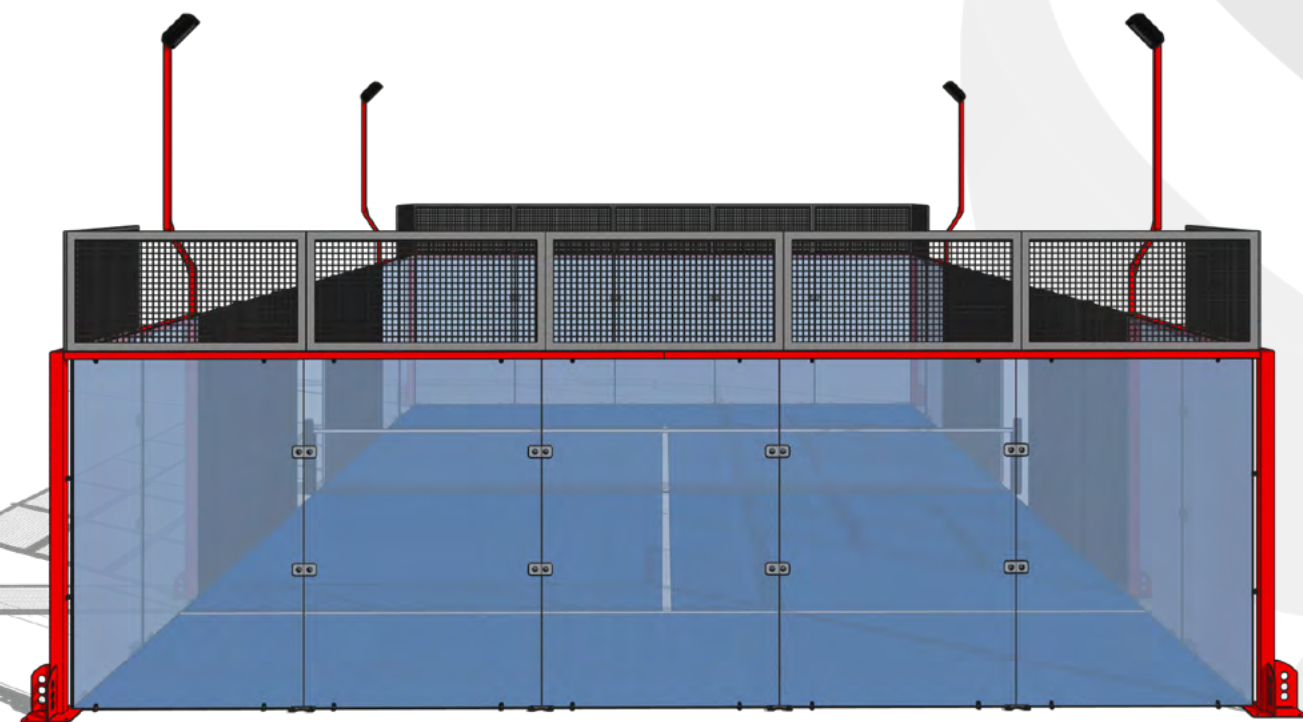


► We specialise in installing courts for Sports and Tennis Clubs and also for Hotels, Sports Centres and Private Individuals.

► We work alongside our clients, managing every detail to make every Padel Court unique, beautiful and structurally sound.

► We provide you with specifications, drawings and details in order to pass city codes and wind load requirements.

SMARTPADEL.ASIA



COURT 01



EcoM Panoramic Outdoor complies with regulatory standards for the padel game. Side and back walls are built with full metal frame & glass, which allow regular ball bounce.

- Anti-Corrosion Treatment: The frame is made of hot dip galvanised Q235 steel, with a thickness of 3 mm.
- Rustproof Paint: The columns and fences are treated with a weather-resistant powder coating.
- Anti-Collision Hardware: Made of 304 stainless steel, electro-polished to prevent corrosion.
- Transparent Tempered Glass: 12 mm thick, compliant with GB15763.2-2009 regulation.
- Self-Detonation Rates: Less than three thousandths, with weather-resistant nylon washers.
- Aluminium Net Column: Includes a professional tennis net.
- Synthetic Monofilament Turf Grass: 12 mm thick.
- Six metres high lighting masts are integrated into the structure with LED floodlights (300 W per pole).

SMARTPADEL.ASIA



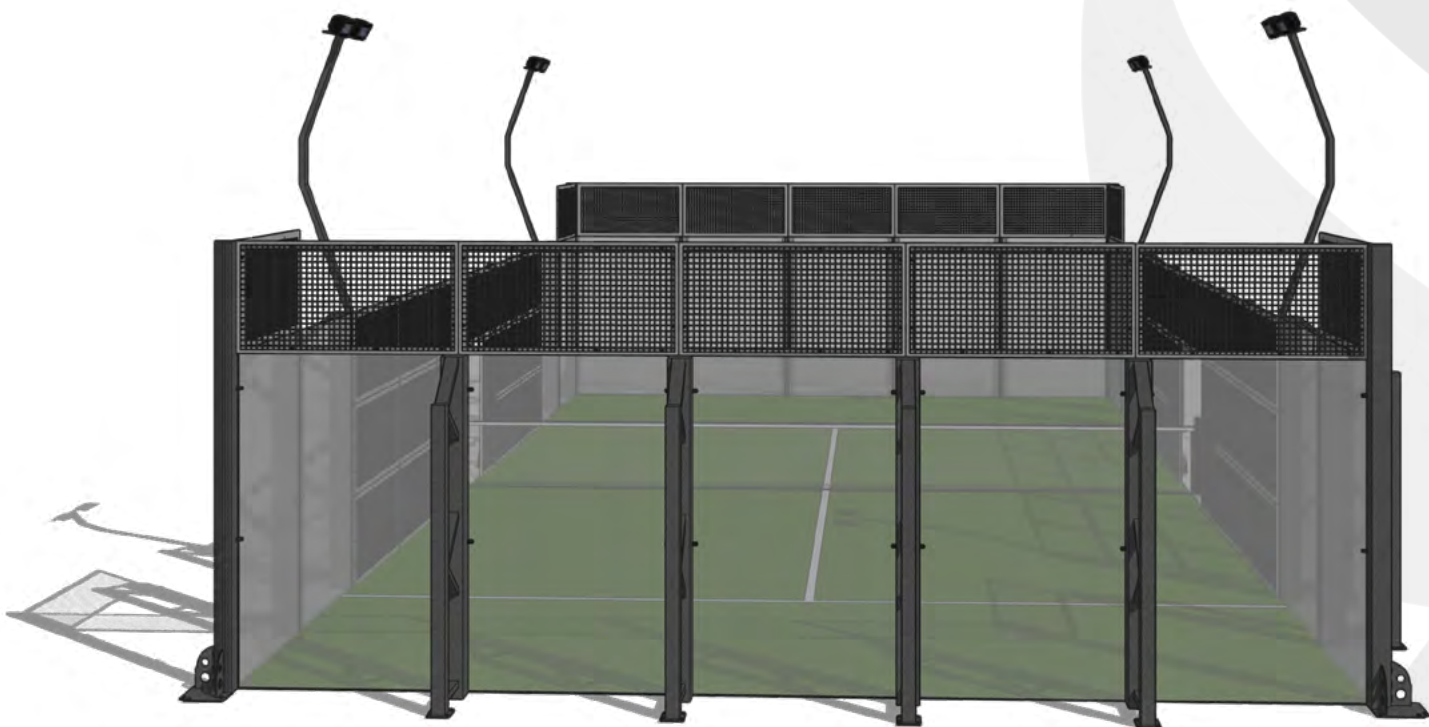
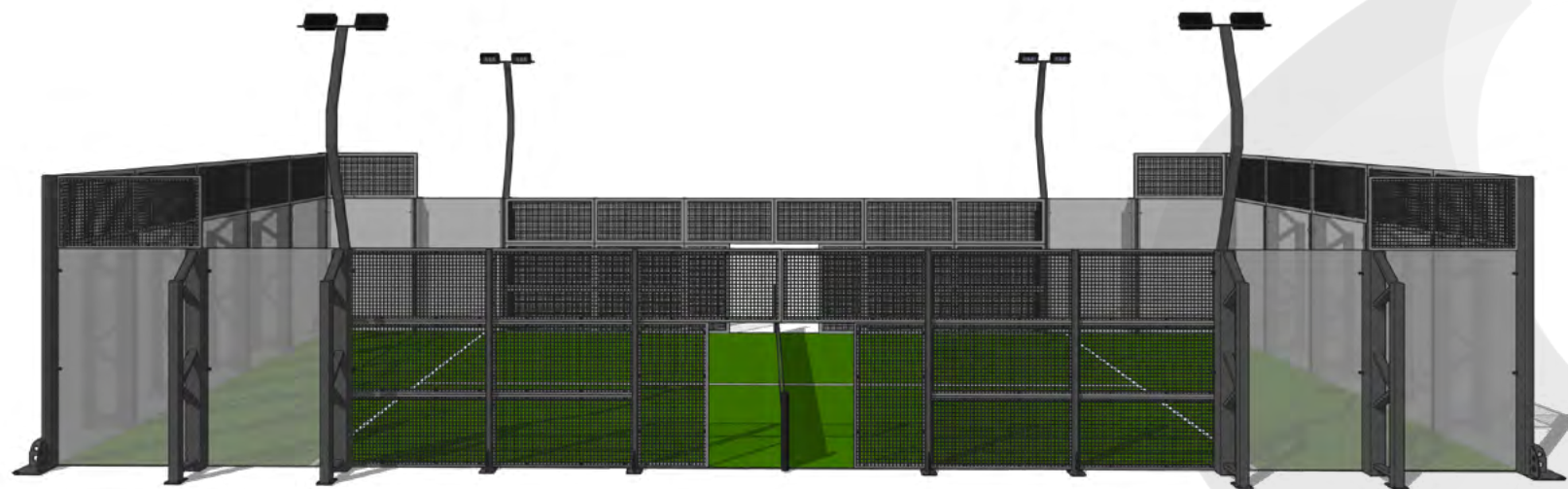
COURT 02

EcoM Club Vision Outdoor. Safe and functional with ordinary design complies with regulatory standards for the padel game.

- ▶ Anti-Corrosion Treatment: The frame is made of hot dip galvanised Q235 steel, with a thickness of 3 mm.
- ▶ Rustproof Paint: The columns and fences are treated with a weather-resistant powder coating.
- ▶ Anti-Collision Hardware: Made of 304 stainless steel, electro-polished to prevent corrosion.
- ▶ Transparent Tempered Glass: 12 mm thick, compliant with GB15763.2-2009 regulation.
- ▶ Self-Detonation Rates: Less than three thousandths, with weather-resistant nylon washers.
- ▶ Aluminium Net Column: Includes a professional tennis net.
- ▶ Synthetic Monofilament Turf Grass: 12 mm thick.
- ▶ Six metres high lighting masts are integrated into the structure with LED floodlights (300 W per pole).



SMARTPADEL.ASIA

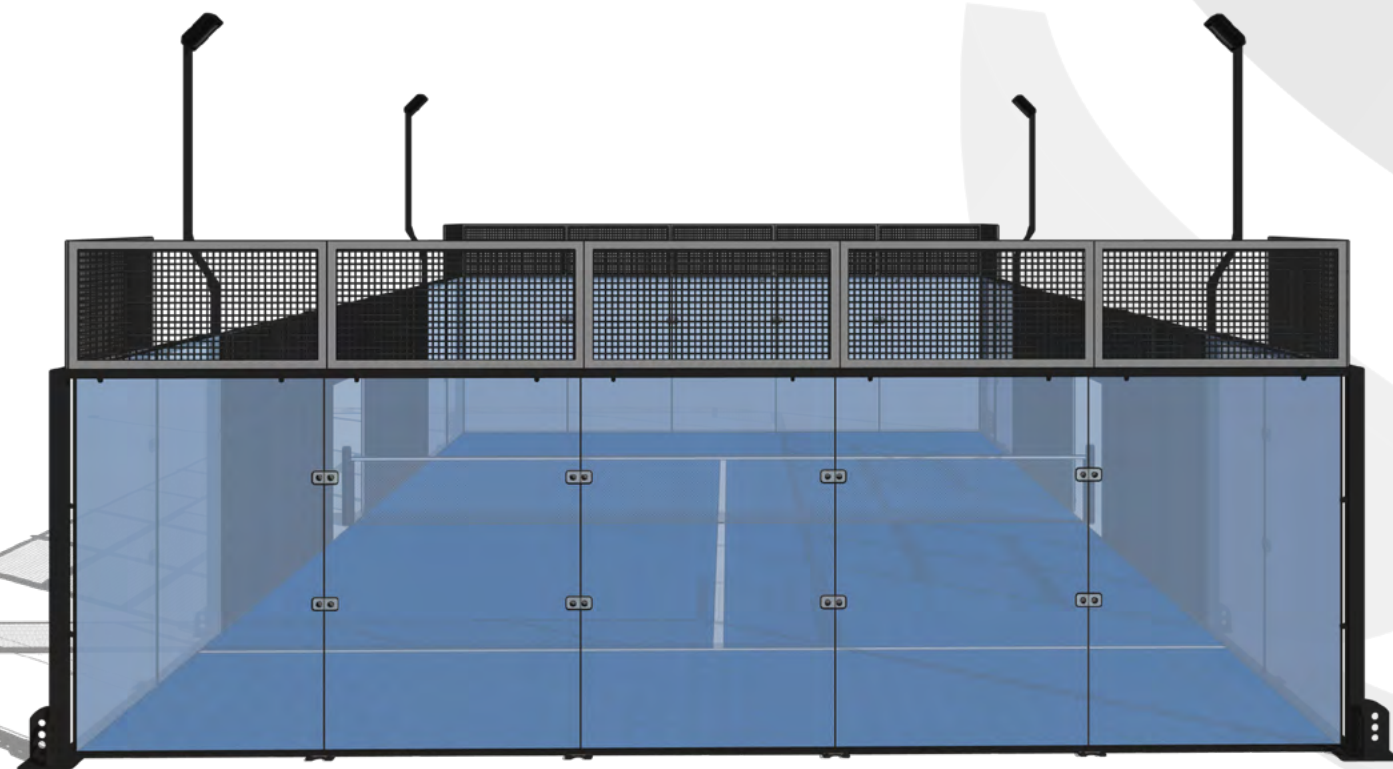


COURT 03

Hurricane Outdoor. This design is precise and suitable for outdoor use in tropical climates with exposure to hurricanes and strong winds.

- Anti-Corrosion Treatment: The frame is made of hot dip galvanised Q235 steel, with a thickness of 10 mm.
- Rustproof Paint: The columns and fences are treated with a weather-resistant powder coating.
- Anti-Collision Hardware: Made of 304 stainless steel, electro-polished to prevent corrosion.
- Transparent Tempered Glass: 12 mm thick, compliant with GB15763.2-2009 regulation.
- Self-Detonation Rates: Less than three thousandths, with weather-resistant nylon washers.
- Aluminium Net Column: Includes a professional tennis net.
- Synthetic Monofilament Turf Grass: 12 mm thick.
- Six metres high lighting masts are integrated into the structure with LED floodlights (300 W per pole).

SMARTPADEL.ASIA



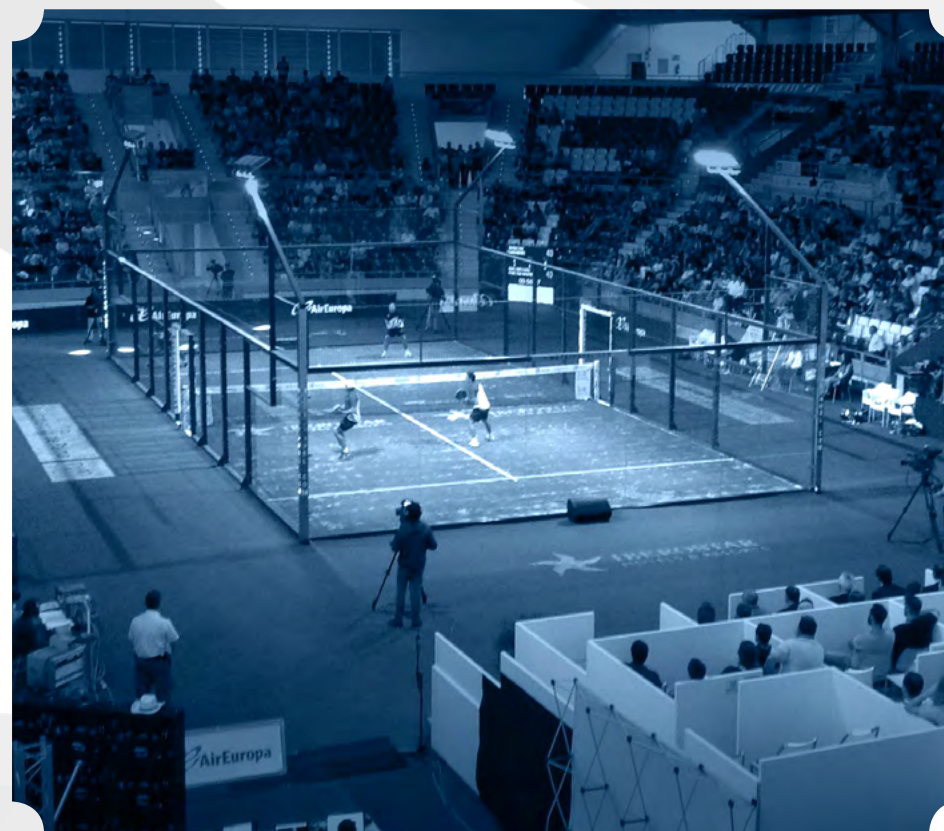
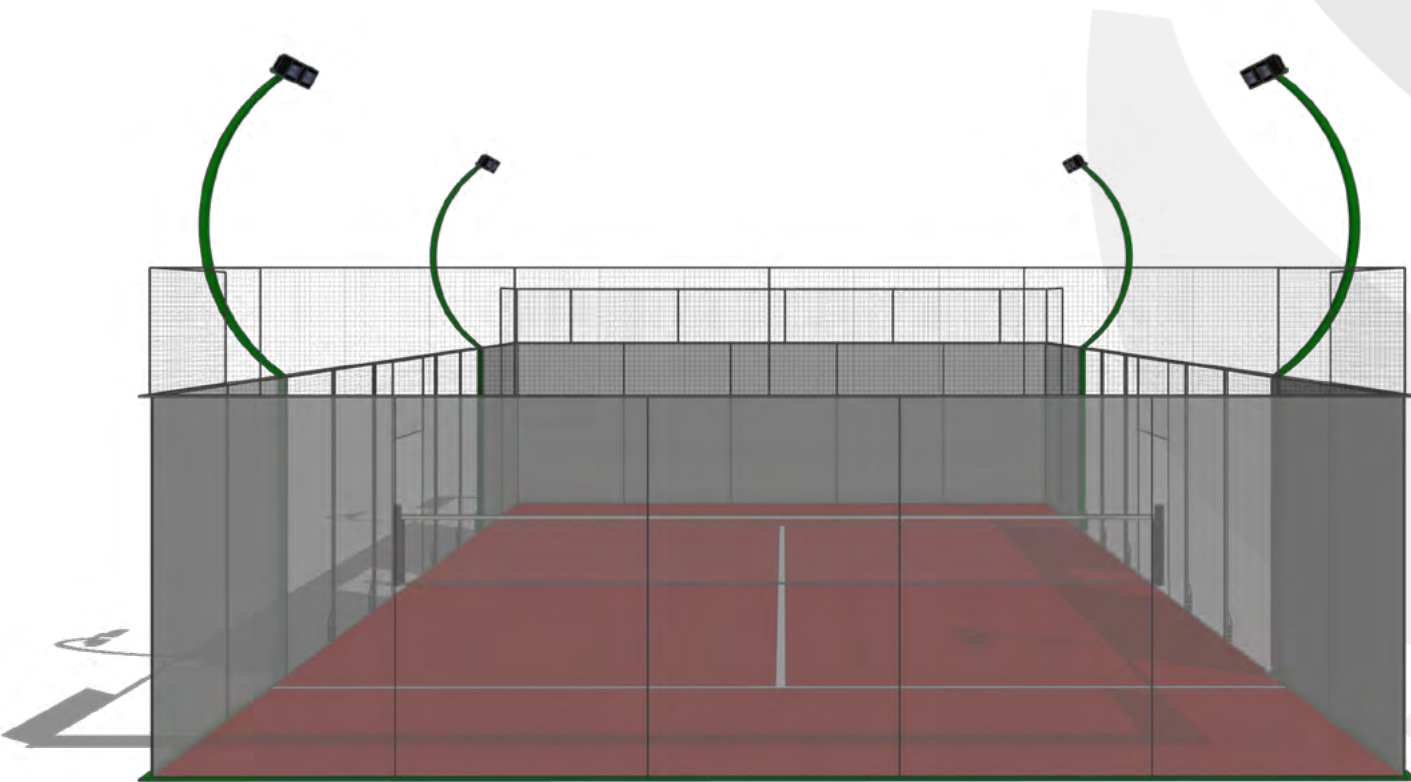
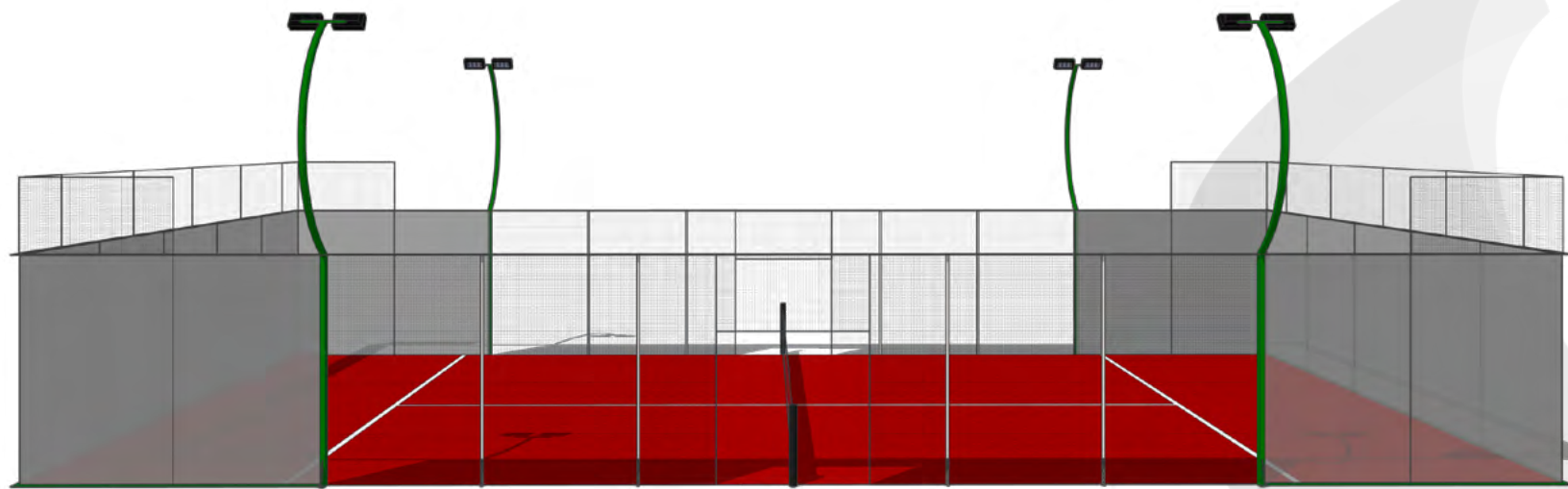
COURT 04



EcoM Panoramic Indoor. This model is effortless to install on a flat concrete surface and must be installed indoors or with a roof cover protection to make it suitable for use in both wet and dry conditions.

- ▶ Anti-Corrosion Treatment: The frame is made of hot dip galvanised Q235 steel, with a thickness of 3 mm.
- ▶ Rustproof Paint: The columns and fences are treated with a weather-resistant powder coating.
- ▶ Anti-Collision Hardware: Made of 304 stainless steel, electro-polished to prevent corrosion.
- ▶ Transparent Tempered Glass: 12 mm thick, compliant with GB15763.2-2009 regulation.
- ▶ Self-Detonation Rates: Less than three thousandths, with weather-resistant nylon washers.
- ▶ Aluminium Net Column: Includes a professional tennis net.
- ▶ Synthetic Monofilament Turf Grass: 12 mm thick.
- ▶ Six metres high lighting masts are integrated into the structure with LED floodlights (300 W per pole).

SMARTPADEL.ASIA



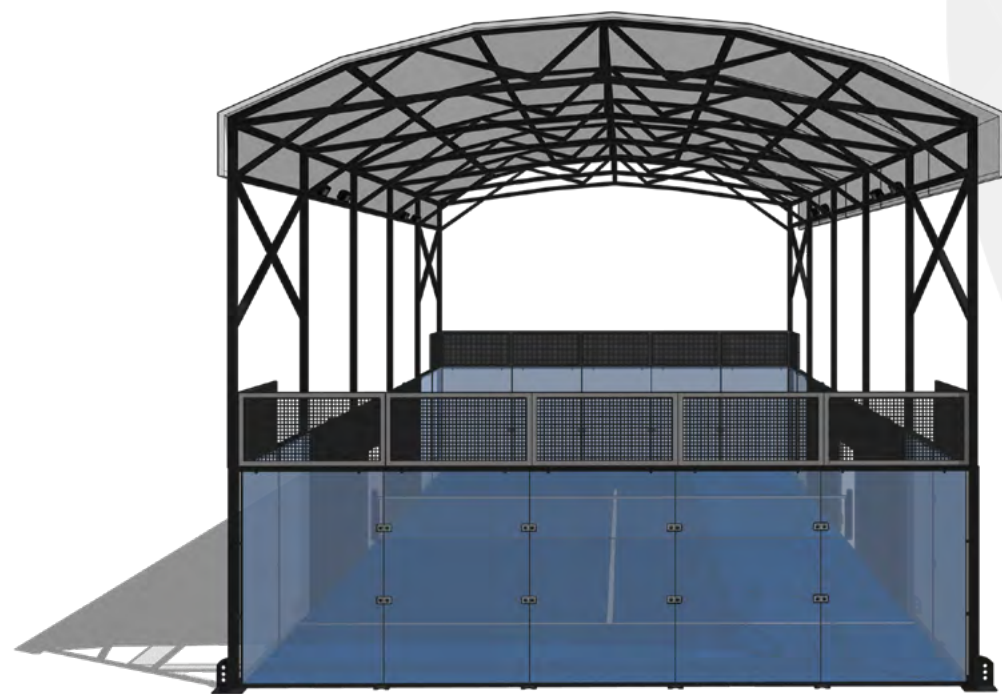
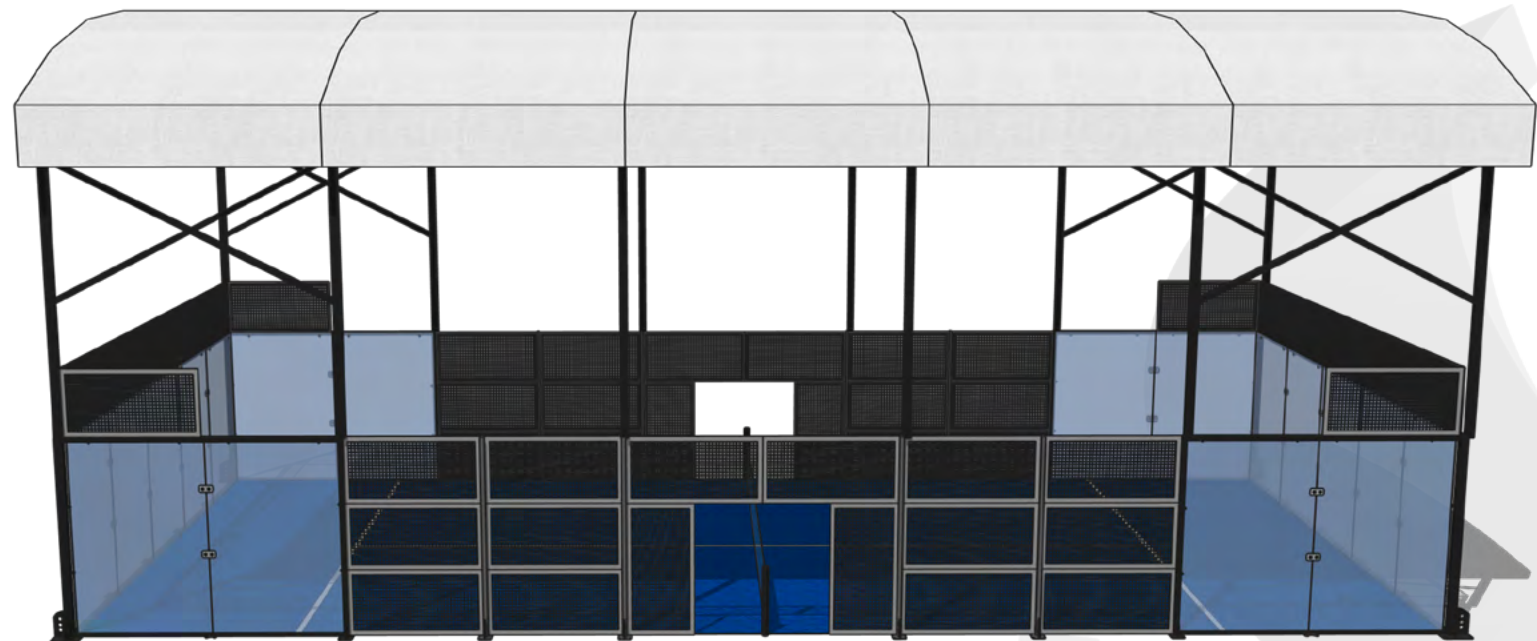
COURT 05



Vision Pro Full Panoramic Indoor. With its 360° panoramic view, this court is perfect for broadcast events. The C5 anti-corrosion treatment and the ability to choose up to 2 colours in the same court, offer full scenic customised options to fit any space.

- ▶ Anti-Corrosion Treatment: The frame is made of hot dip galvanised Q235 steel, with a thickness of 10 mm.
- ▶ Rustproof Paint: The columns and fences are treated with a weather-resistant powder coating.
- ▶ Anti-Collision Hardware: Made of 304 stainless steel, electro-polished to prevent corrosion.
- ▶ Transparent Tempered Glass: 12 mm thick, compliant with GB15763.2-2009 regulation.
- ▶ Self-Detonation Rates: Less than three thousandths, with weather-resistant nylon washers.
- ▶ Aluminium Net Column: Includes a professional tennis net.
- ▶ Synthetic Monofilament Turf Grass: 12 mm thick.
- ▶ Six metres high lighting masts are integrated into the structure with LED floodlights (300 W per pole).

SMARTPADEL.ASIA



COURT 06



Padel Cove model. Integrated Polygonal Cover metal structure with a durable tarpaulin cover. This design offers players a panoramic view, while the roofs seamlessly blend into the structure, creating a harmonious and immersive playing experience.

- Anti-Corrosion Treatment: The frame is made of hot dip galvanised Q235 steel, with a thickness of 5 mm.
- Rustproof Paint: The columns and fences are treated with a weather-resistant powder coating.
- Anti-Collision Hardware: Made of 304 stainless steel, electro-polished to prevent corrosion.
- Transparent Tempered Glass: 12 mm thick, compliant with GB15763.2-2009 regulation.
- Self-Detonation Rates: Less than three thousandths, with weather-resistant nylon washers.
- Aluminium Net Column: Includes a professional tennis net.
- Synthetic Monofilament Turf Grass: 12 mm thick.
- Six metres high lighting masts are integrated into the structure with LED floodlights (300 W per pole).
- The roof height can be adjusted from 8 to 12 metres.

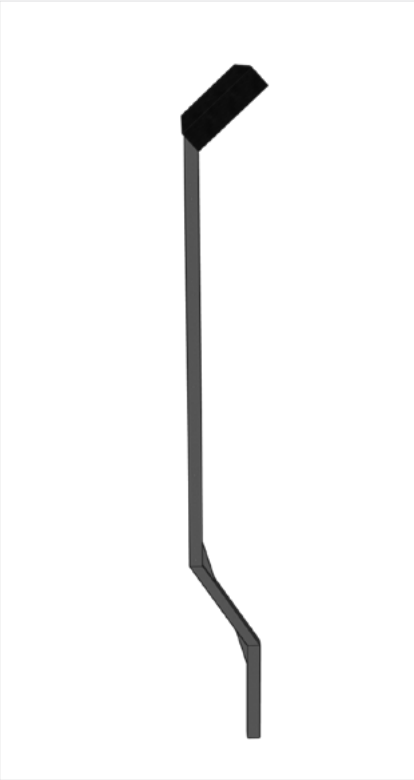
SMARTPADEL.ASIA

Lighting Mast Profile & Colours

We can design lighting masts in any shape. The three models below are the most commonly requested.

Any RAL colour of your choice can be applied upon request. RAL is a colour matching system that defines colours for paints, coatings, and plastics. On the link below, you can find all RAL colours (2,831). <https://www.ralcolorchart.com/>

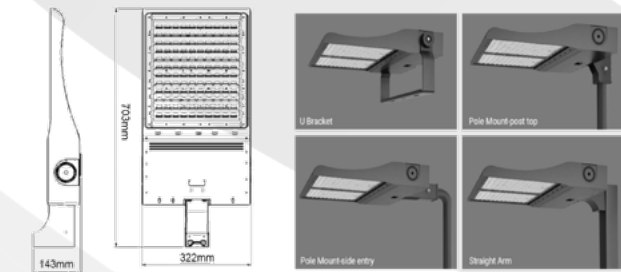
Regular Straight



Semi Curve



Octo Curve



The HFS Series Floodlights are the next generation in high output sports and area lighting. With low windage, asymmetric optic options, and wattages ranging from 300W to 600W, the HFS Series is the ideal fitting to meet the required lighting standards for your specific sporting application.

Artificial Padel Grass

Designed specifically for Padel, this semi-sanded turf boasts a dense grass surface with texturised monofilament fibres that ensure stability, grip, and controlled sliding. The turf is constructed to withstand the demands of intense gameplay, providing consistent ball bounce, reliable foot traction, and the perfect balance between grip and slide.

Model	N5011
Yarn material	100% fresh PE
Turf	Fibrillated
Yarn count(Dtex)	7500Dtex
Yarn height	12mm
Stitch Rate	30stitches/10cm
Gauge	1/4 inch
Density	47400 stitches/m²
Approx weight	2.50KG/m²
Pile weight	1.90KG/m²
Basic cloth	Mattex PP + Net + SBR





Distributed and installed by Sports Engineering and Recreation Asia Ltd

Sports Engineering And Recreation Asia Ltd., is the regional leader specialized in the design, development, equipment supply and installation of international standard sports, recreation, and fitness facilities in Southeast Asia and beyond.

We provide high quality products and services to many market sectors including private homes, health and fitness facilities, private clubs, education institutions, hotels and resorts, property developments, commercial clients and governmental clients.



Padel courts can be installed on an old hard court by first ensuring the flatness of the soil and then preparing it; specifically: cleaning, sanding, and spot repairs. By extending the surface about two metres, three Padel courts can be set up from one existing standard size tennis court (18x36m) to bring it to 20x36m.

The fence consists of mesh welded mesh and tempered glass walls on lacquered steel girder frames. The structure is anchored to the ground by expansion bolts in a peripheral apron made of reinforced or fibre-reinforced concrete.

The playing surface must be hard: porous concrete, bitumen-coated with a synthetic grass finish or carpet.

Innovative and automated technology.

Safety is the top priority, we offer safe equipment based on your local and predicted wind loads. The design and colours of your Padel court can be customise for your corporate identity. Your functionality may differ and we have the capability to adapt to your needs.

Sport n'play will study your project and propose services tailored to your needs. Follow-up and assistance at each stage of your installation and development. Installation from A to Z, including system maintenance and equipment monitoring.



An attractive modern image. Tailored to maximise your club rating. Become a “Must See” place and the benchmark in your sector.

Communicate differently. Show all your events and enhance the visibility of your club.

Customer Loyalty. Stand out and attract new players. Create a friendly fun club with an educational spirit.

Enhance your profitability with innovative systems.





Distributed and installed by:

Sports Engineering and Recreation Asia Ltd

164 Soi Soonvijai 14, Bangkapi Sub-District, Huaykwang District, Bangkok 10310, Thailand

+66 2 1851 921-4 or +66 2 1851 926 - info@searasports.com - www.searasports.com



Manufactured by:

Pangu Europe Co., Ltd.

RM 1607 Trend Center, CTR 29-31, Cheung Lee Street Chai Wan, Hong Kong

+44 20 3286 3247 - info@smartpadel.asia - www.smartpadel.asia

