



# TIE DIE

THIS JOB IS KILLING YOU

DIRECTED BY JOHN PENNEY

Written by Chris Valenti & Nick Alverson

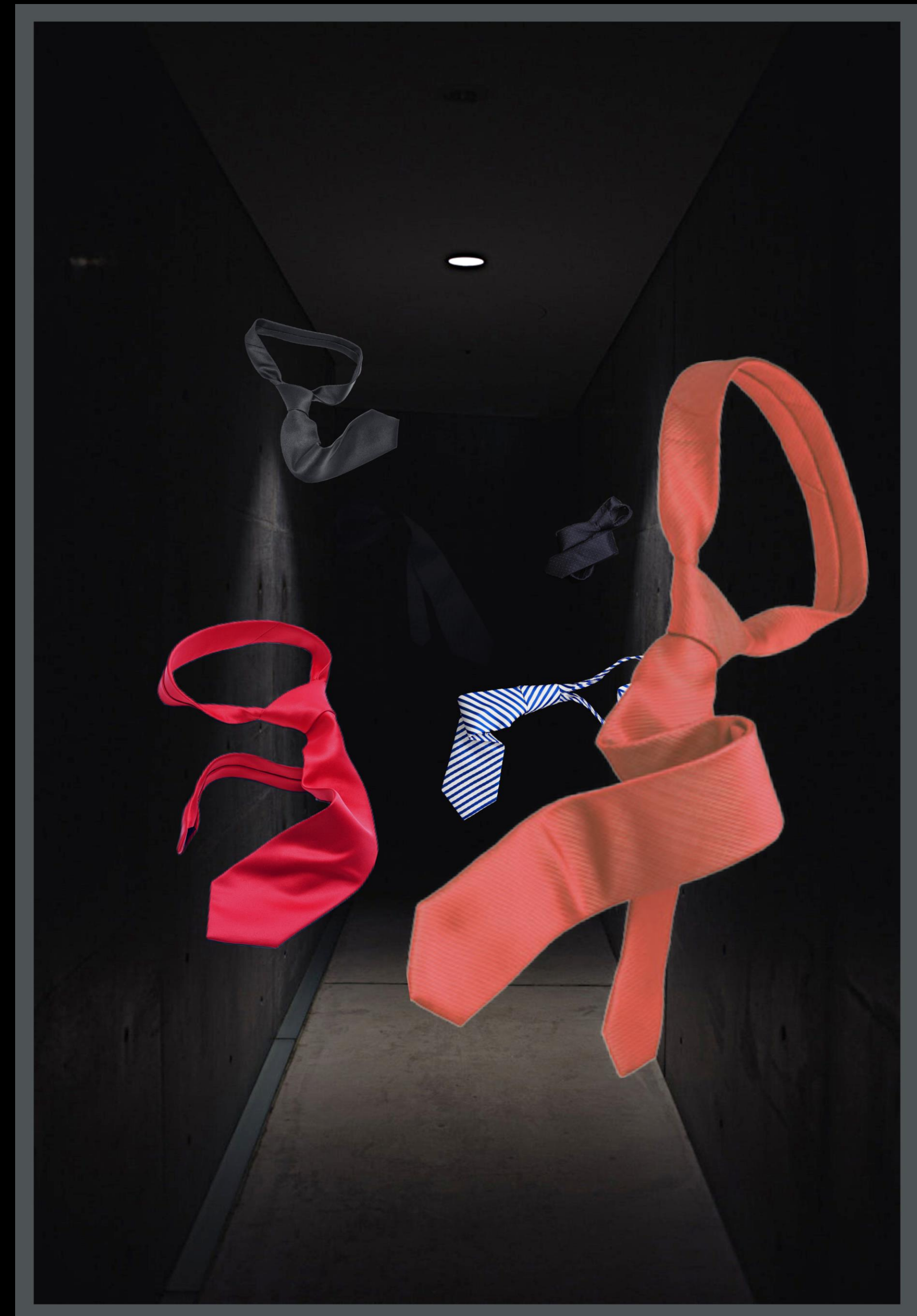
## Fun Fact:

Large corporations are using **Artificial Intelligence** to chart employee productivity.

One company has put that **AI** into your **necktie**.

And gave it the ability to **...terminate you.**

# TIE DIE





Fun Fact:

Some bosses are complete  
fucking assholes.

They set you up to lose

... YOUR LIFE.



# **TIE DIE**

The Ultimate  
Toxic Work Environment.

The growing economic  
disparity between workers  
and CEOs leads to those in  
power treating human beings  
like they are simply raw  
materials.

**The Rich Feed Off the Poor.**



## Kyle File

Desperate for a job, Kyle joins a new company. He's friendly, sincere, but inside, Kyle thinks of himself as a failure.

He once started his own business creating apps, but it didn't make him any money. He fell into deep debt. Now he's just trying to work his way out of it.

## Rhee



An evil genius.

The boss of her own company, she demands every ounce of productivity you got. She is an intimidating villain.

When a worker fails a task, she immediately solves the problem, humiliates them. Then fires them. And kills them.



## Annie

Annie is focused and determined to succeed.

She graduated first in her class at Vanderbilt where she started the technology club, was Editor in Chief of the school paper, and was listed on Business Week's Top 20 under 20 list.

She develops a chemistry with Kyle, until it's undermined by the evil lurking somewhere between the supply closet and the copy room.



## Lonnie

The weirdo IT guy is harboring a secret.

He's really an undercover agent with PADAW: People Against Dying at Work.

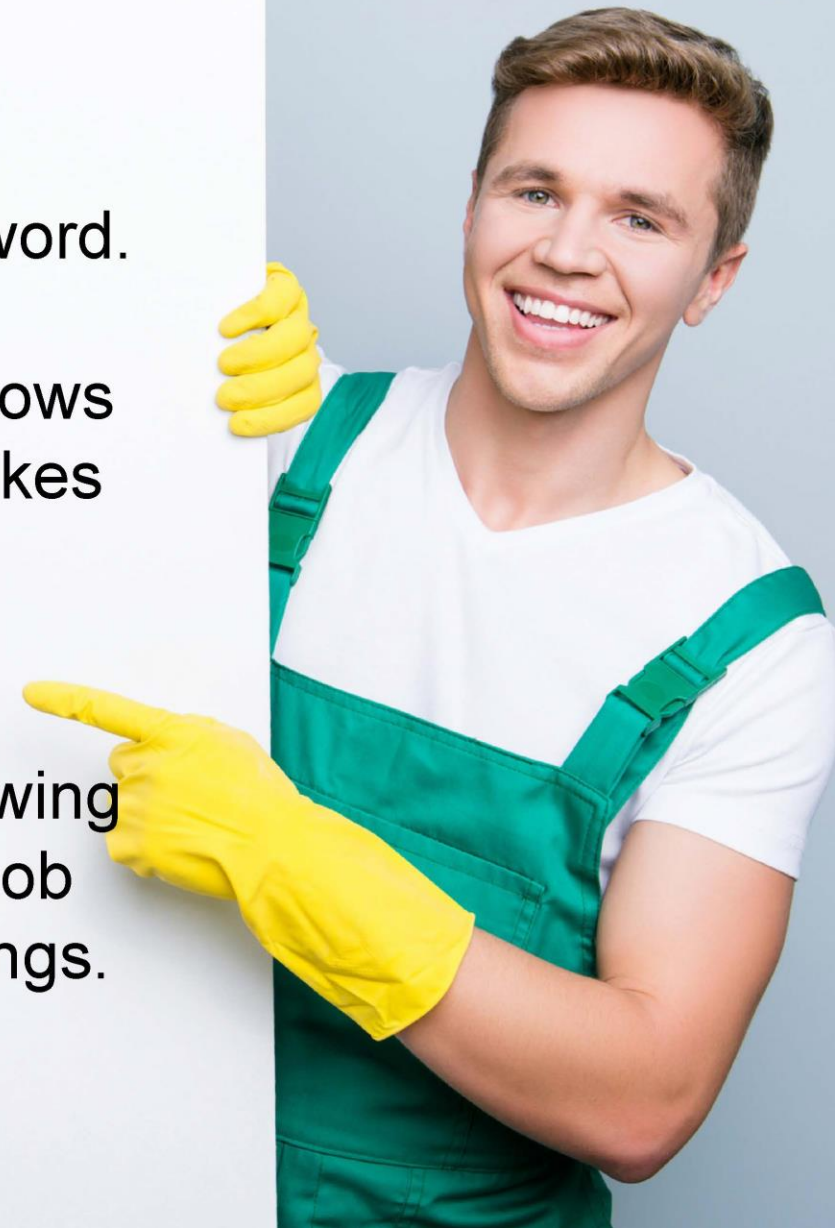
He is there to find a way to take Rhee down and eventually brings Kyle into his confidence.

# Harold Romney

A company man in the true sense of the word.

The even keeled, practical head of HR knows his place and doesn't stray from it. He makes sure that Rhee's vision of a productive workplace is being implemented.

His continued existence depends on following Rhee's orders. He just wants to keep his job even if that means doing questionable things.



# Leylei

The pretty girl in the office.

She used to be a fashion influencer before reality set in and she realized she needed to get a real job.

She hates working for Rhee and can't stand how unfashionable her smart tie is. She longs for a return to making fashion videos and leaving the corporate life far behind.



# Marsha

The overworked accounting assistant.

She's been with the company for many years and fears that her age and her limited skill set make her unemployable outside of this company.

Marsha keeps her head down trying to make it through the day.



The office Kiss Ass.

Always happy to take whatever assignment comes his way, even if he has no idea what he's doing.

He'll throw others under the bus to look good for the boss.

He wants to be seen as important and is willing to overwork himself to prove his worth.



# Kevin Puckerman

# Wild Bill



The company mascot.

A happy-go-lucky pig who cruises the office eating anything left on the floor, especially human bodies.

He just wants a scratch behind the ears and to be fed.



## Toxic Work Environment

Rhee expects only the highest productivity from her employees.

She secretly commands an army of flying robot SMART TIES to monitor and enforce her rules.





## Working Late

A Co-Worker Dies.

Kyle runs for help.

Harold follows Kyle  
back to the scene.

The body is  
mysteriously gone.



## Office Romance

Kyle and Annie awkwardly bump into each other in the supply closet.

Again, and again, and again...

Little do they know that one of their smart ties rats them out.



## Kyle Survives a Tie Attack

He finds a tie killing someone in the copy room.

The Tie tries to kill Kyle.

Kyle barely escapes alive.



## Global Kill Order

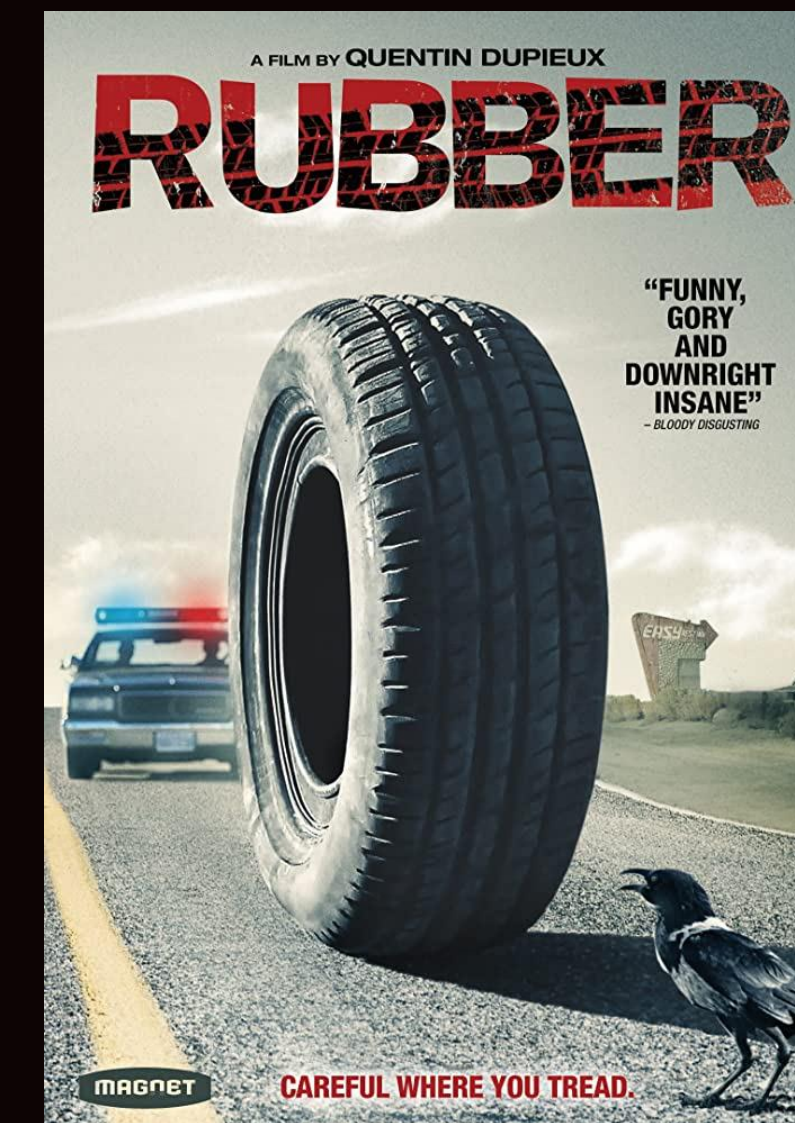
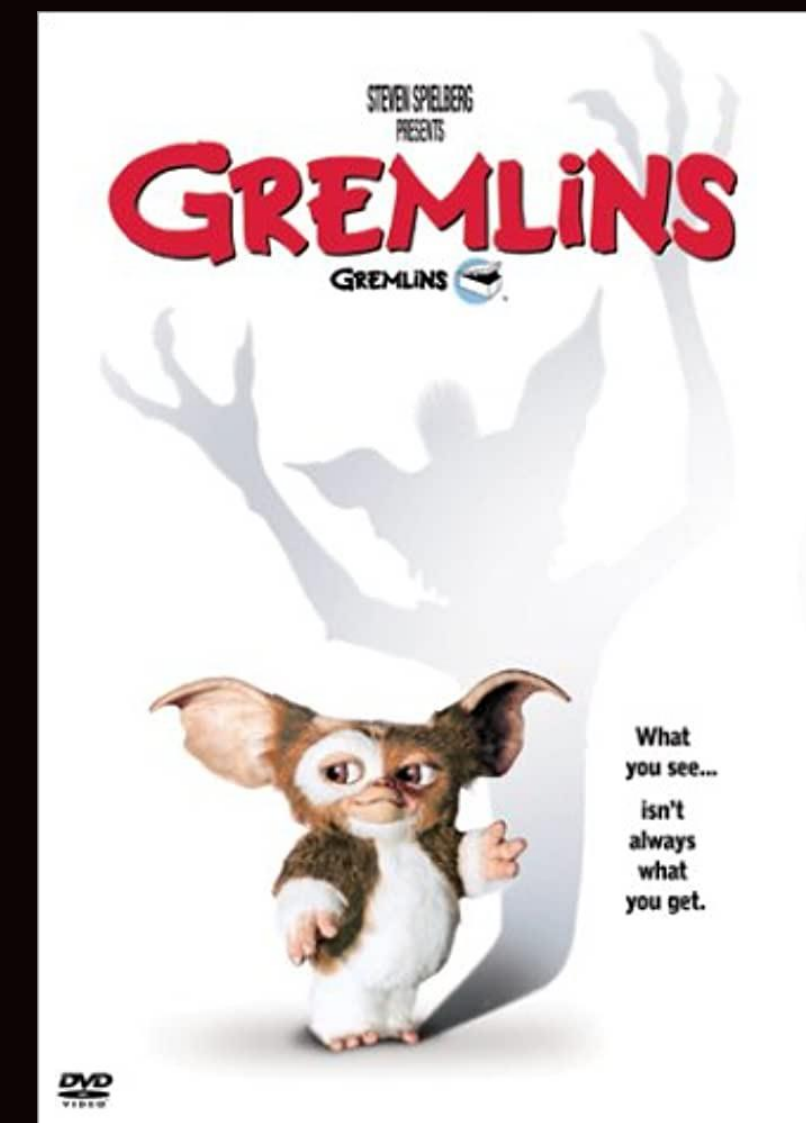
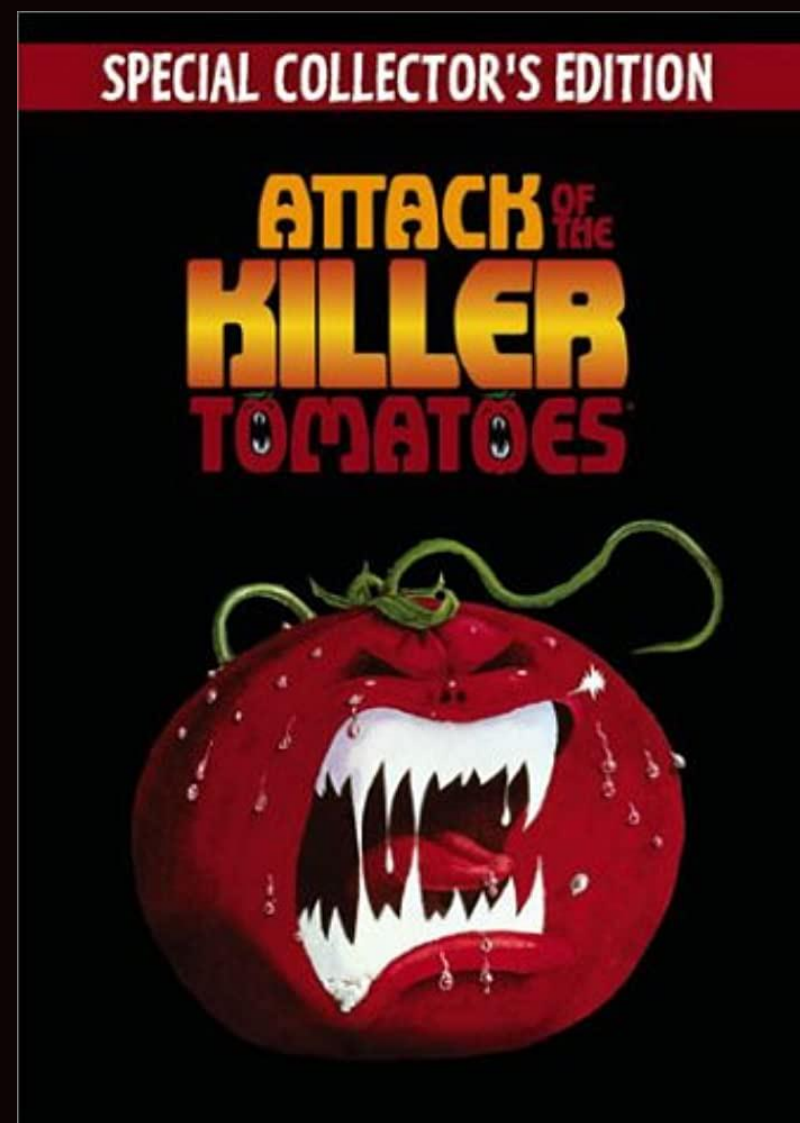
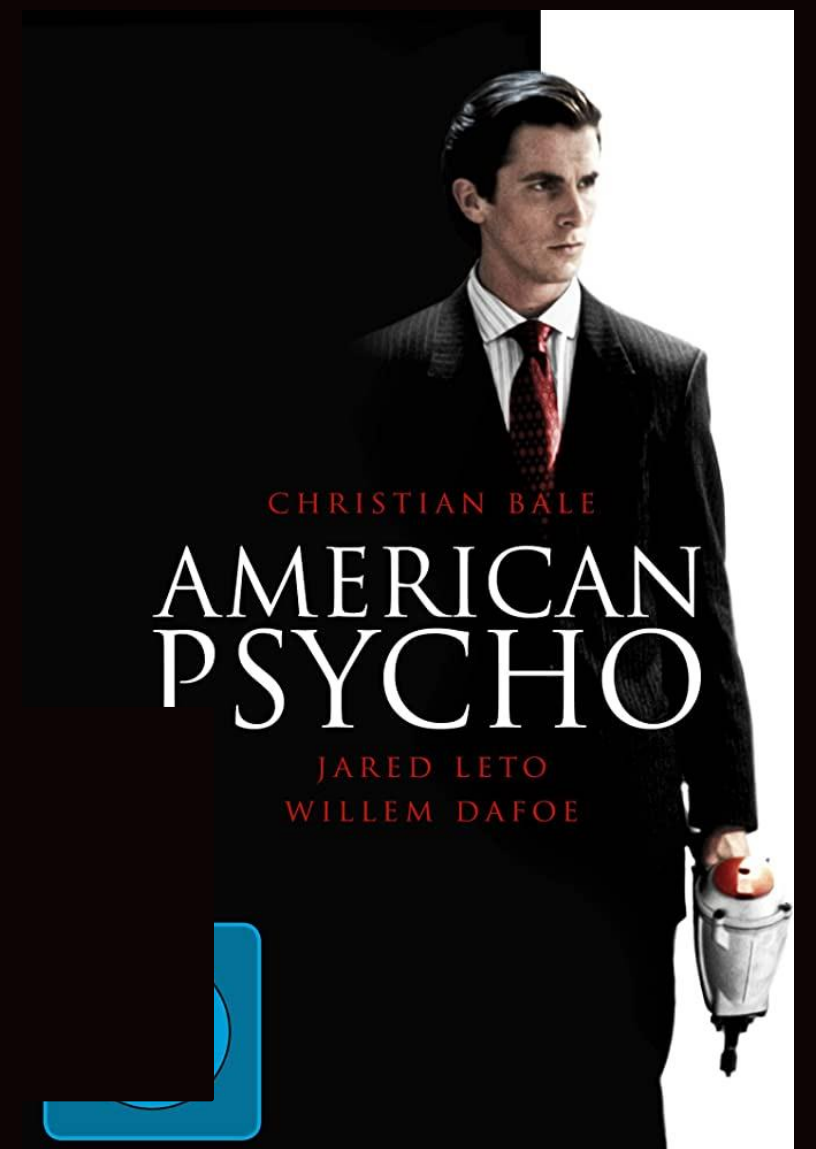
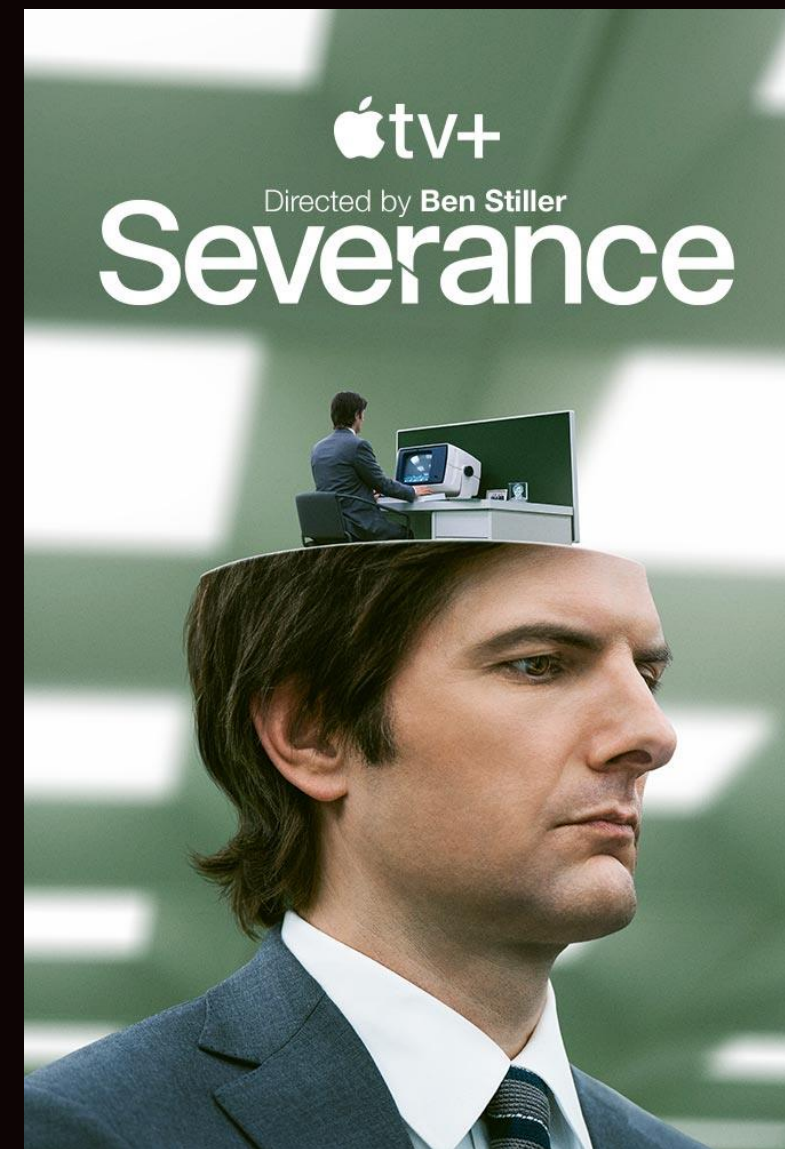
Kyle announces to the office that Rhee is the killer.

But it's too late.

Rhee orders the entire office to be murdered.



# Comparables



## Contact

Chris Valenti

c. 818-415-2090

e. Chris@ChrisValenti.com

ChrisValenti.com

John Penney

Dark Arts Entertainment

c. 310-617-4759

e. johnp@DarkArtsEntertainment.com

darkartsentertainment.com

**Your Deadline has Arrived!**



**JOHN PENNEY'S "TIE DIE"**

starring JON FINCH • ALEC MCCOWEN • BARRY FOSTER  
co-starring BILLIE WHITELAW • ANNA MASSEY • BARBARA LEIGH-HUNT • BERNARD CRIBBINS • VIVIEN MERCHANT

Screenplay by **CHRIS VALENTI & NICK ALVERSON**

A UNIVERSAL RELEASE • TECHNICOLOR®

