

TECHNICAL SPECIFICATION

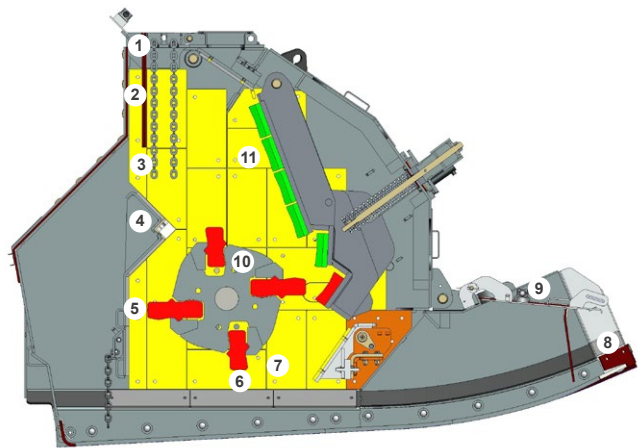
PORTAFILL MI-7



IMPACT CRUSHER

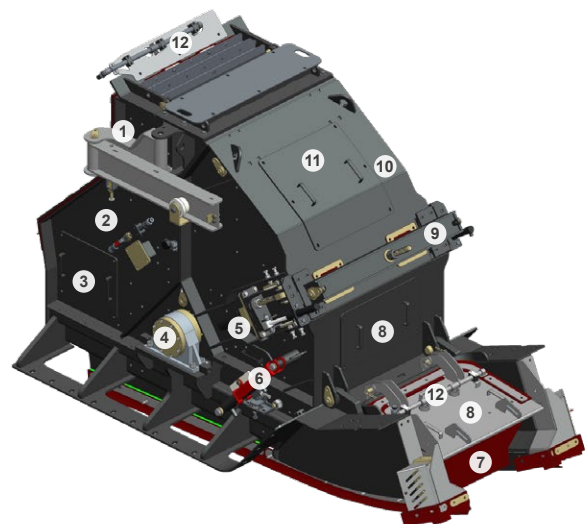
Rotor	4 Blow Bar
Crusher Opening	810 x 600mm (32" x 24")
Rotor Diameter	800mm (32")
Rotor Width	750mm (29")
Crusher Drive	Direct Drive from Engine Via Belts
Crusher Overload Protection	Yes

- | | |
|---------------------|-----------------------|
| 1. Dust Suppression | 7. Wear Liners |
| 2. Rubber Curtain | 8. Belt Tension Wheel |
| 3. Chain Curtain | 9. Dust Suppression |
| 4. Inlet Wear Bar | 10. Clamping Wedge |
| 5. Long Blow Bar | 11. Impact Block |
| 6. Short Blow Bar | |



Crusher Gap Setting	Hydraulic
Recommended Max. Crusher Gap	100mm (4")
Recommended Min. Crusher Gap	30mm (1 1/4")
Further Adjustment	Gap can be adjusted depending on material
Max. Feed Size	400mm x 400mm (16" x 16") depending on material
Blow Bar Weight	140kgs (310lbs)
Rotor Speed	600 - 700rpm
Wear Liners	15mm (5/8") thick

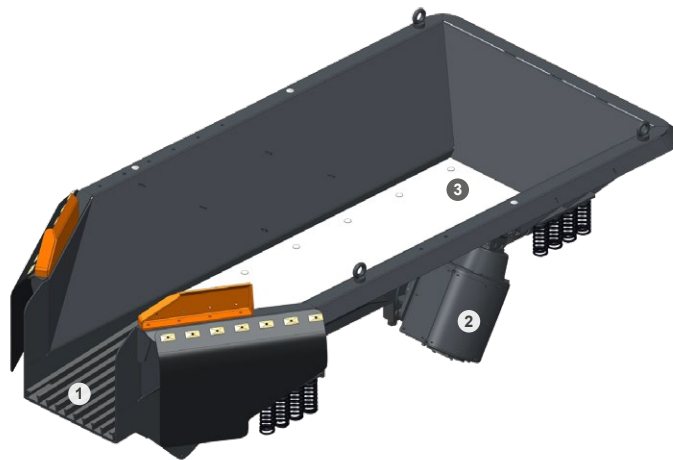
- | | |
|----------------------------|----------------------------|
| 1. Blow Bar Change Arm | 7. Rubber Curtain |
| 2. Main Crusher Body | 8. Inspection Cover |
| 3. Inspection Cover | 9. Jam Release Mechanism |
| 4. Crusher Bearings | 10. Crusher Hinged Section |
| 5. Crushing Gap Adjustment | 11. Inspection Cover |
| 6. Crusher Open Close Ram | 12. Dust Suppression |



FEEDER

Feeder Length and Width	3865 x 1977mm (12'8" x 6'6")
Hopper Capacity	2m ³ or 3m ³ heaped (2.6 cu.yd.or 3.9 cu. Yd. heaped)
Pre-screening Grid Length and Width	1000mm x 700mm (40" x 28")
Pre-screening Discharge	Onto Main Conveyor
Vibration Source	Twin Hydraulic Vibrating Units
Vibration Angle	Patented design to change angle to throw
Feed to Crusher Control	Load Management on Feeder

1. Pre-screen Grizzly
2. Vibrating Units
3. Hardox Liners



CONVEYOR

Belt Width	900mm (36")
Discharge Height	2900mm (9'6")
Folding Mechanism	Hydraulic Folding for Transport
Construction	Impact Bed Under Crusher
Belt Type	Smooth or Chevron Belt

POWER

Engine	CAT C4.4 129kw (172HP) EU Stage IV or V, EPA Tier 3 or 4F
Cooling Type	Liquid Cooled
Fuel Tank Capacity	200 litres (52 US Gallon)
Air Filter	Scavenger Air Filter

OPTIONAL EXTRAS

- Closed loop recirculating screen and conveyor (Patent folding action)
- Dust suppression
- Dust covers on conveyors
- Radio tracking remote
- Belt magnet on main conveyor
- Digital belt scales

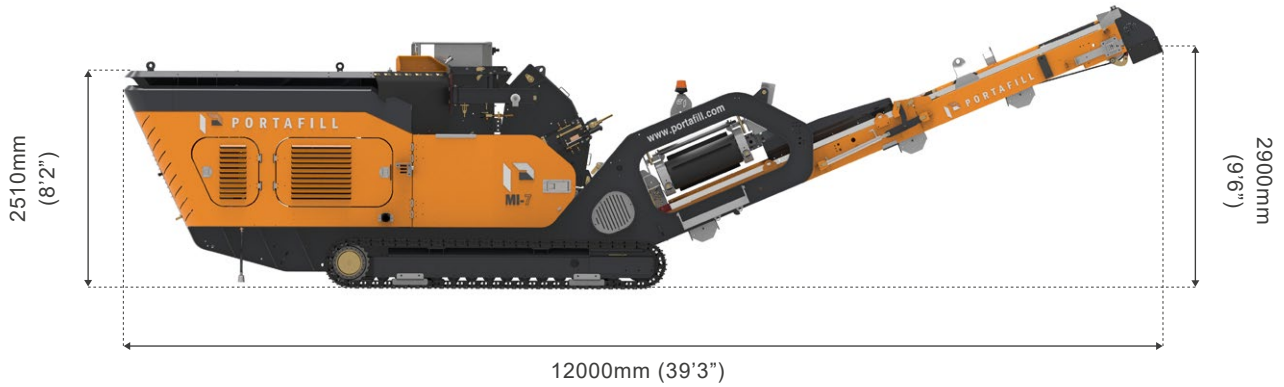
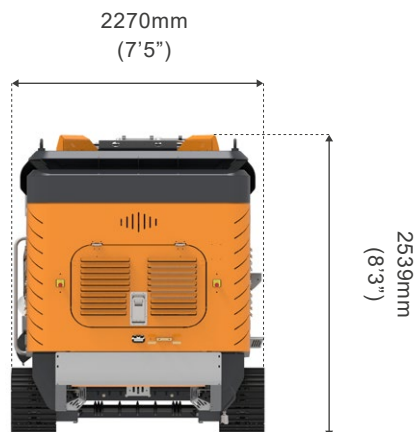
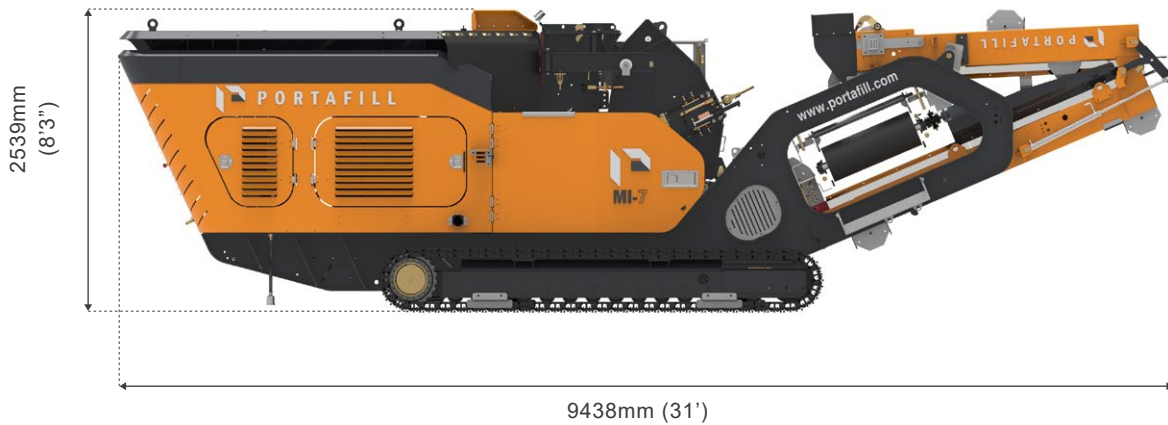
CLOSED LOOP SPECIFICATIONS

Screen Box Size Lenth x Width	3180 x 1125mm (10'5" x 3'8")
Number of Decks	Single
Fines Conveyor Belt Width	900mm (36")
Fine Conveyor Dischage Height	2500mm (8'2")
Transfer Conveyor Belt Width	600mm (24")
Returns Conveyor Belt Width	500mm (20")
Folding Mechanism	Hydraulic Folding for Transport
Remove for Transport	No

WEIGHT

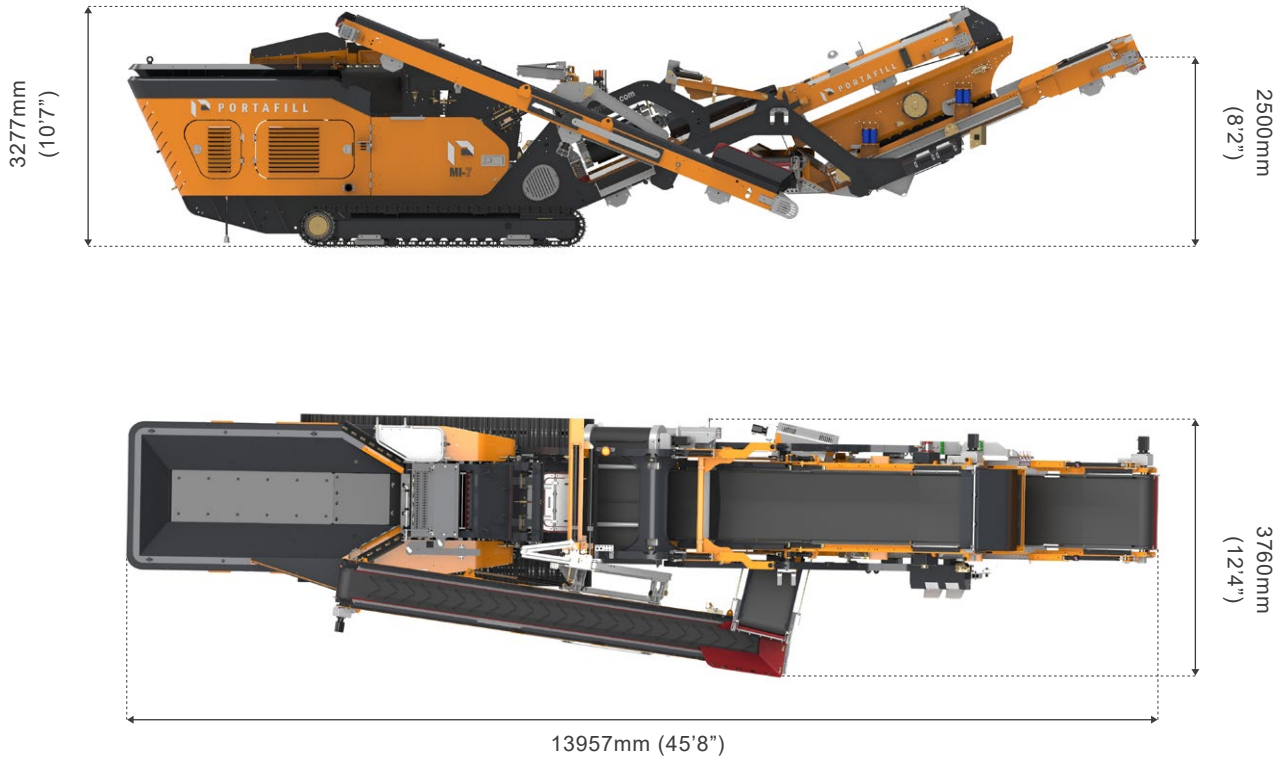
MI-7	20,000kgs (44,090lbs)
MI-7R	25,000kgs (55,115lbs)

EUROPEAN PATENT NO	EP2894117B1
EUROPEAN PATENT APPLICATION NO	13197036.0

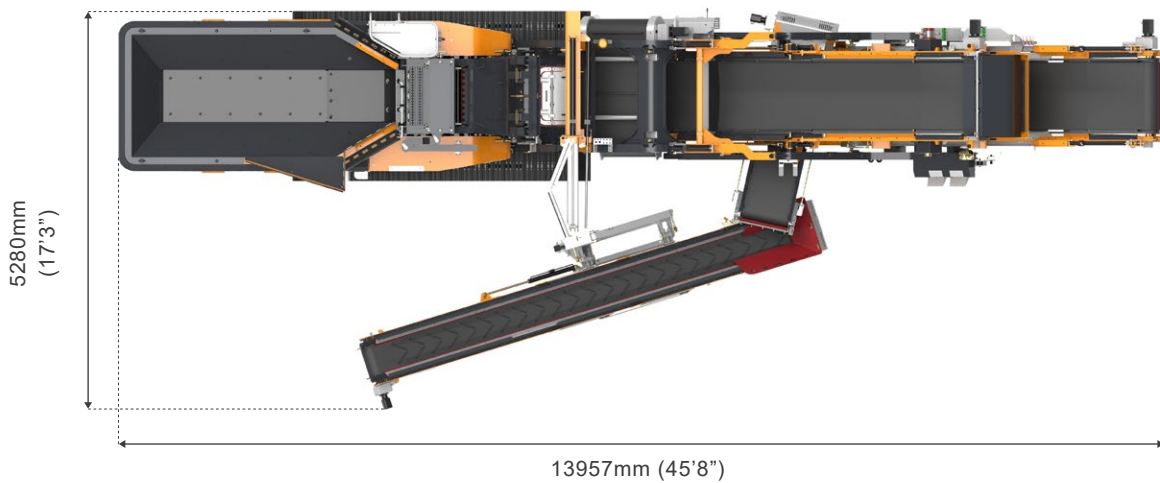
WORKING DIMENSIONS MI-7

TRANSPORT DIMENSIONS MI-7


WEIGHT
20,000kgs (Approx.)
44,090lbs (Approx.)

WORKING DIMENSIONS MI-7R (CLOSED CIRCUIT)

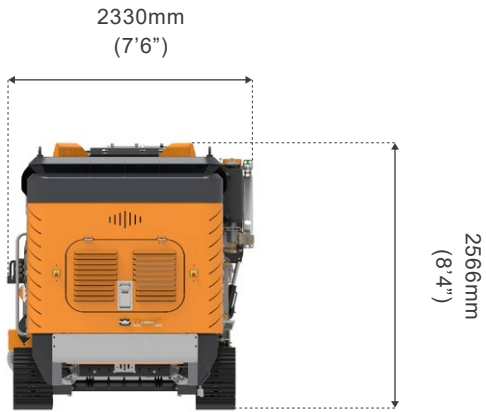
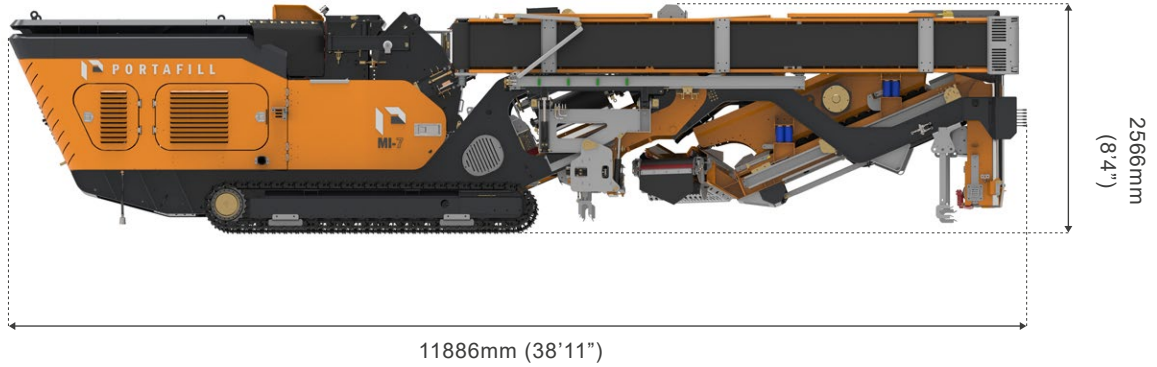


WORKING DIMENSIONS MI-7R (OPEN CIRCUIT)



* All drawings dimensions approximate and in millimetres and feet and inches. Portafill International reserves the right to alter the specification of the machines without notice. Images may show some optional equipment. E & OE.

TRANSPORT DIMENSIONS MI-7R (40FT HC CONTAINER)



WEIGHT
25,000kgs (Approx.)
55,115lbs (Approx.)

ISO IMAGE MI-7R



* All drawings dimensions approximate and in millimetres and feet and inches. Portafill International reserves the right to alter the specification of the machines without notice. Images may show some optional equipment. E & OE.