



# NavPort: Installation and Startup Guide

Last Revision: 7/10/2010

# Contents

1.0 – Installing NavPort.....	3
2.0 – Configuring NavPort for system startup .....	6
3.0 – Enabling the Windows Administrator account .....	8

# NavPort: Installation Guide

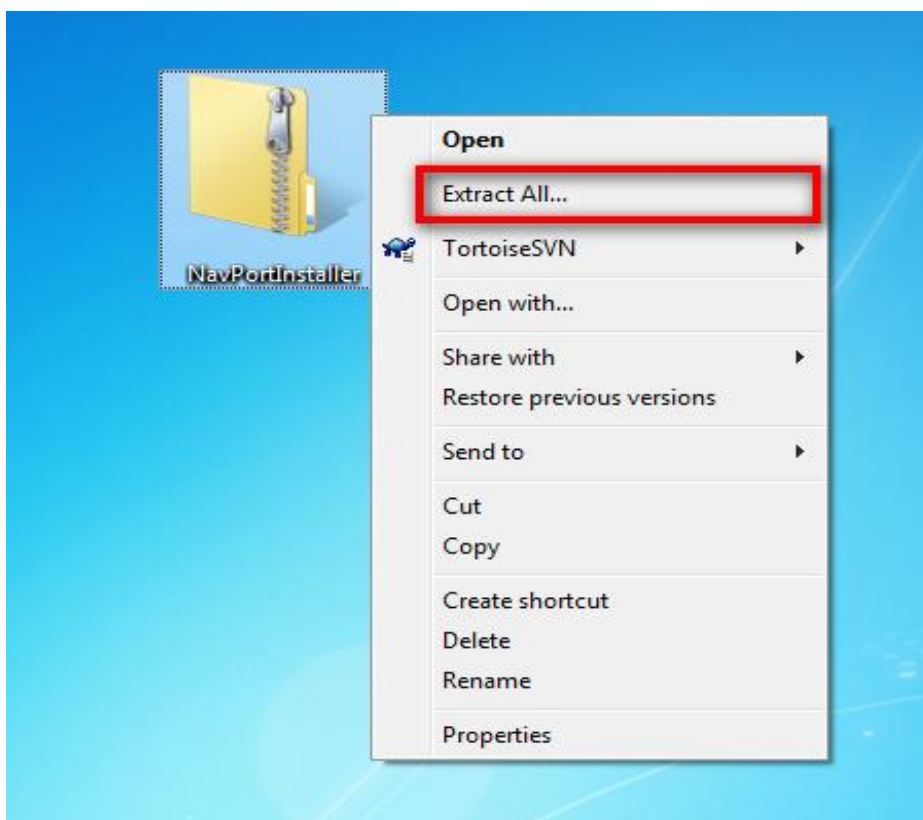
This document details the required steps to install the NavPort application. Before continuing, please ensure the following tasks have been completed:

- ✓ NavPort installation .zip file has been downloaded
- ✓ User is logged in as the Windows Administrator (for details, see section 3.0)

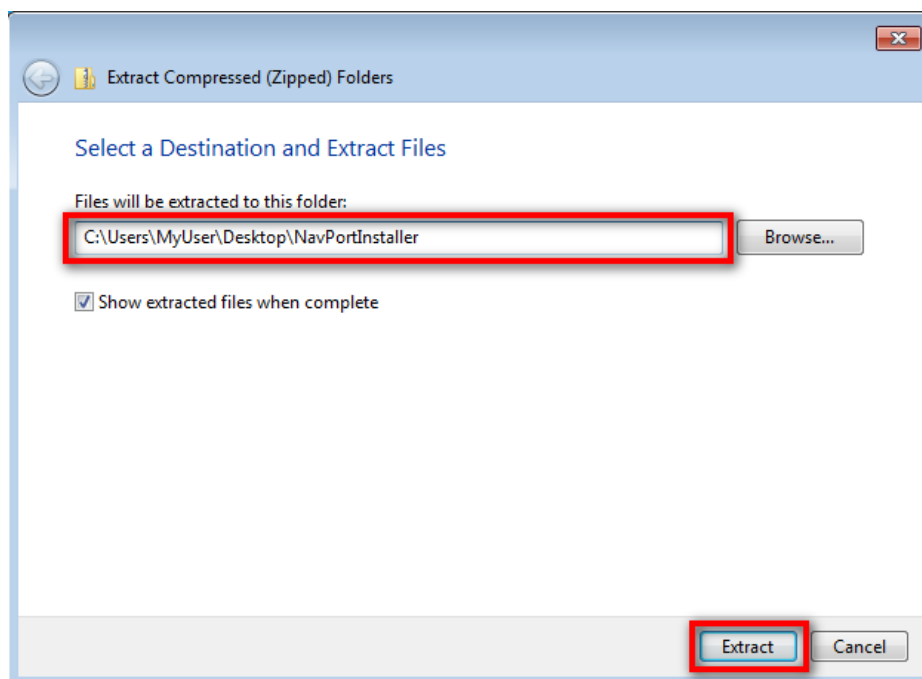
## 1.0 – Installing NavPort

**Step 1:** Locate the NavPort installation .zip file that you downloaded.

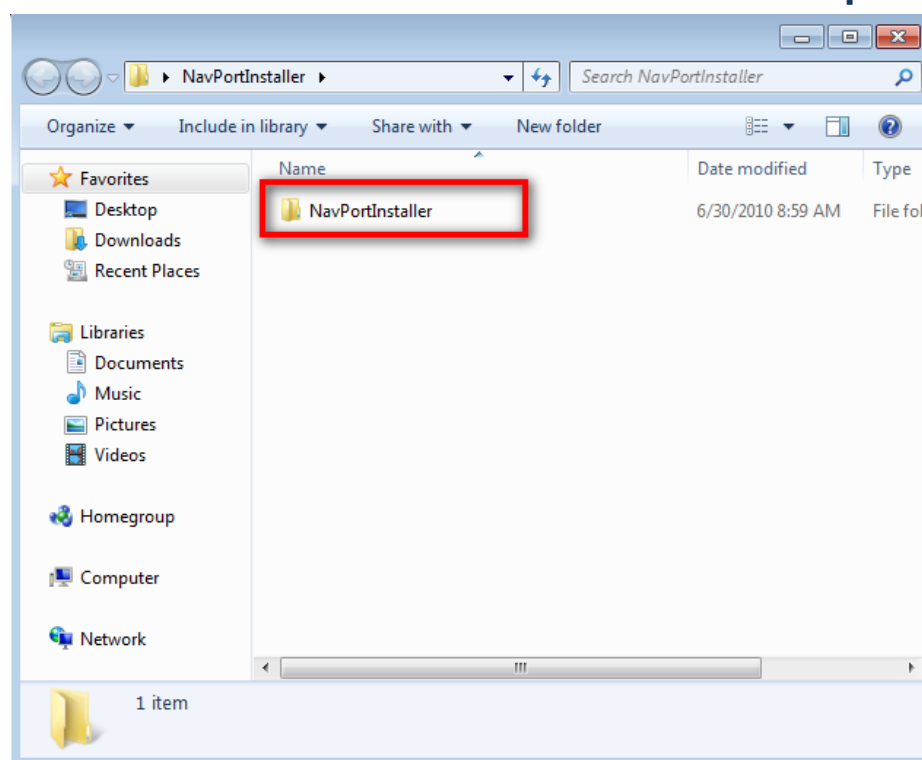
**Step 2:** Right-click on NavPort installation .zip file and click “Extract All” on the menu that opens.



**Step 3:** Choose where you want the extracted files to go and type the location into the textbox. Make sure the “Show extracted files when complete” checkbox is checked and then click “Extract”.

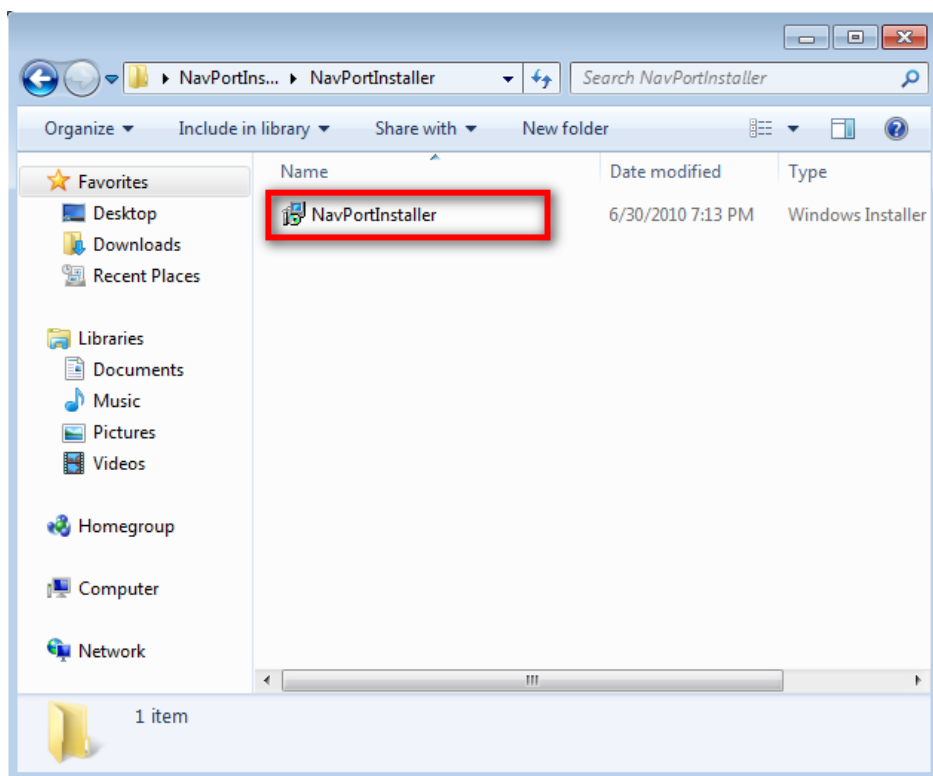


**Step 4:** Double-click the “NavPortInstaller” folder to open it.



---

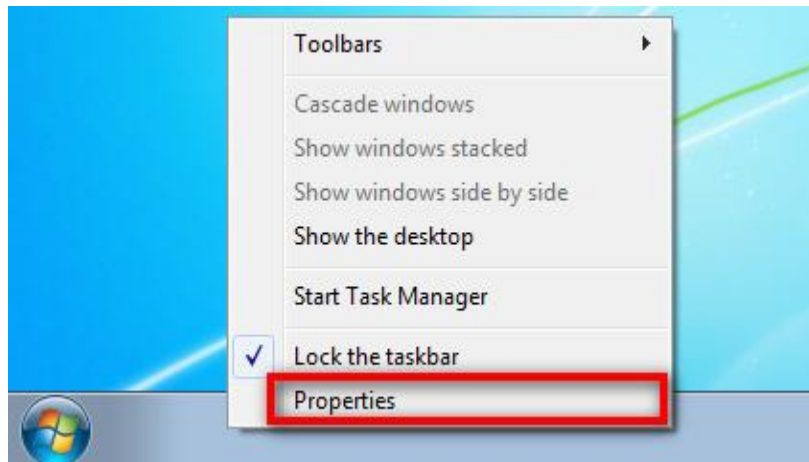
**Step 5: Double-click the “NavPortInstaller” executable file to begin the installation.**



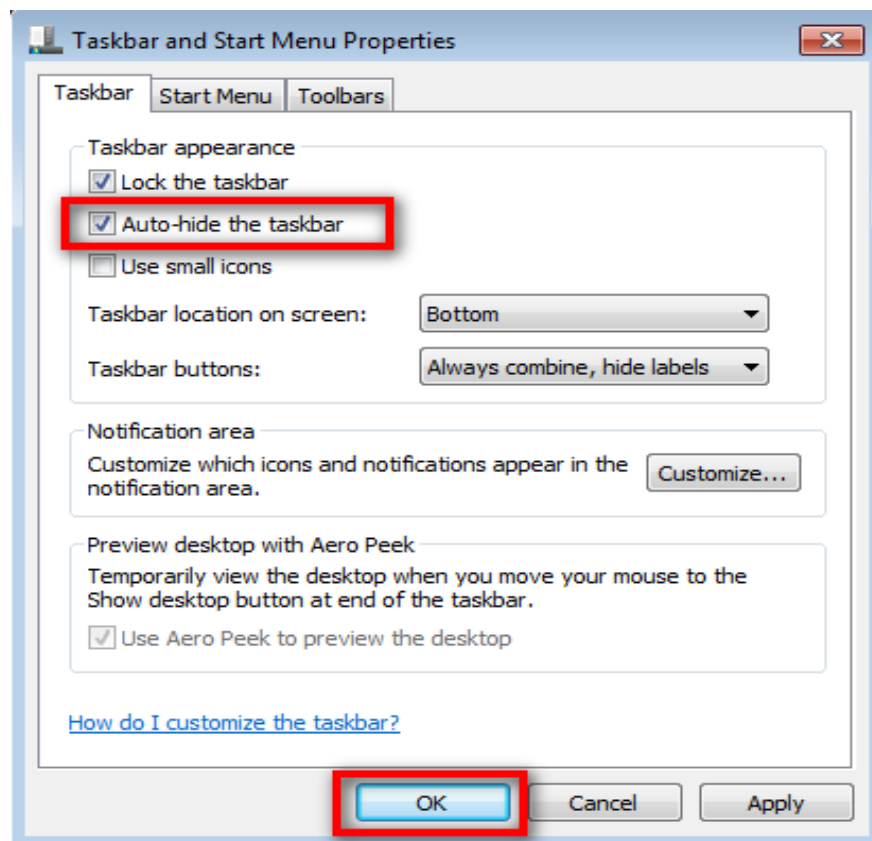
**Step 6: Follow the on-screen NavPort Installer instructions to complete the installation.**

## 2.0 – Configuring NavPort for system startup

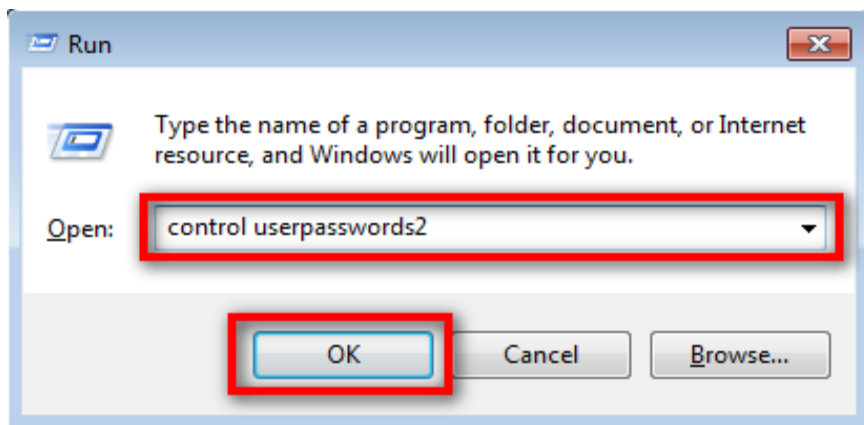
**Step 1:** Right-click the Windows taskbar and click “Properties” in the menu that opens.



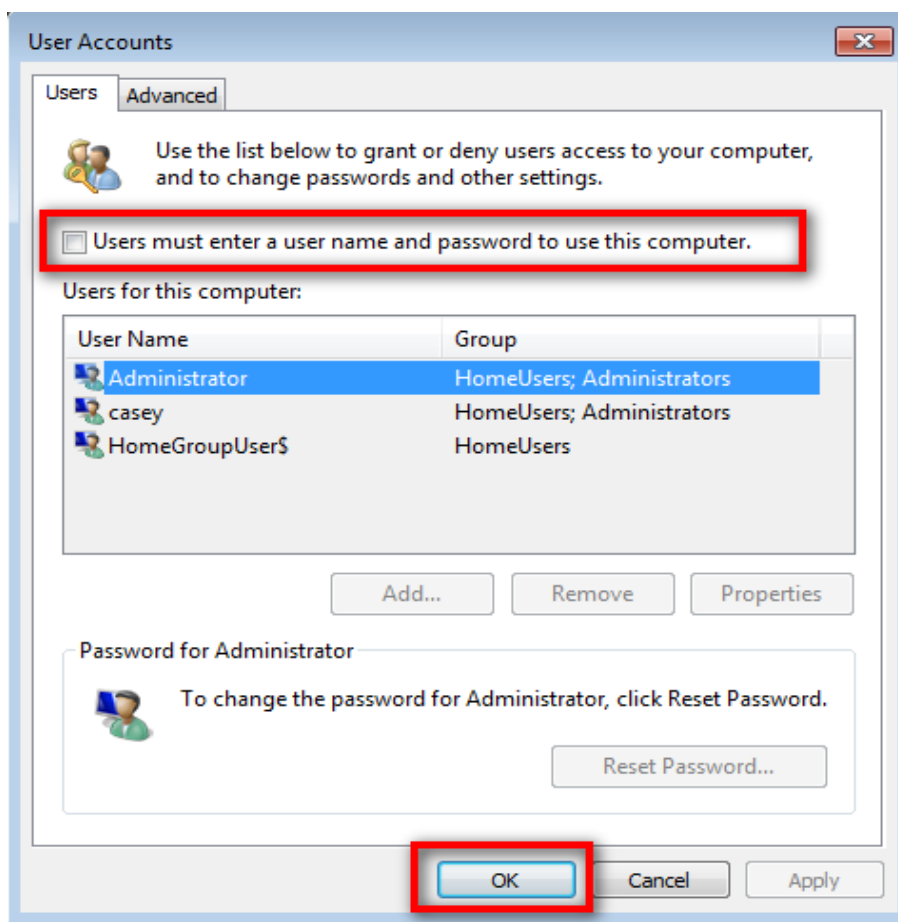
**Step 2:** Check the “Auto-hide the taskbar” checkbox and click “OK”.



**Step 3:** Press WindowsKey + R to open the “Run” dialog box. Type “control userpasswords2” in the textbox and click “OK”.

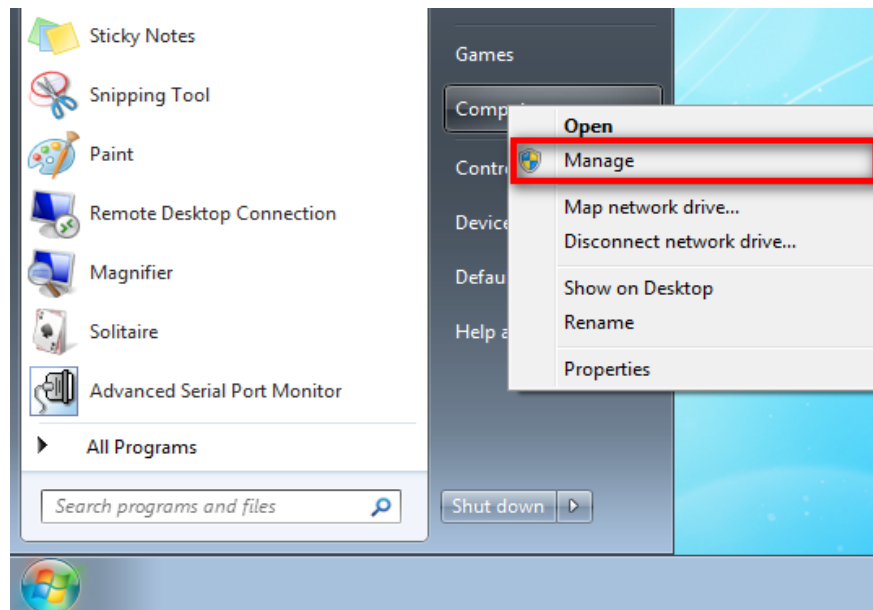


**Step 4:** UN-check the checkbox that says “Users must enter a username and password to use this computer” and click “OK”.

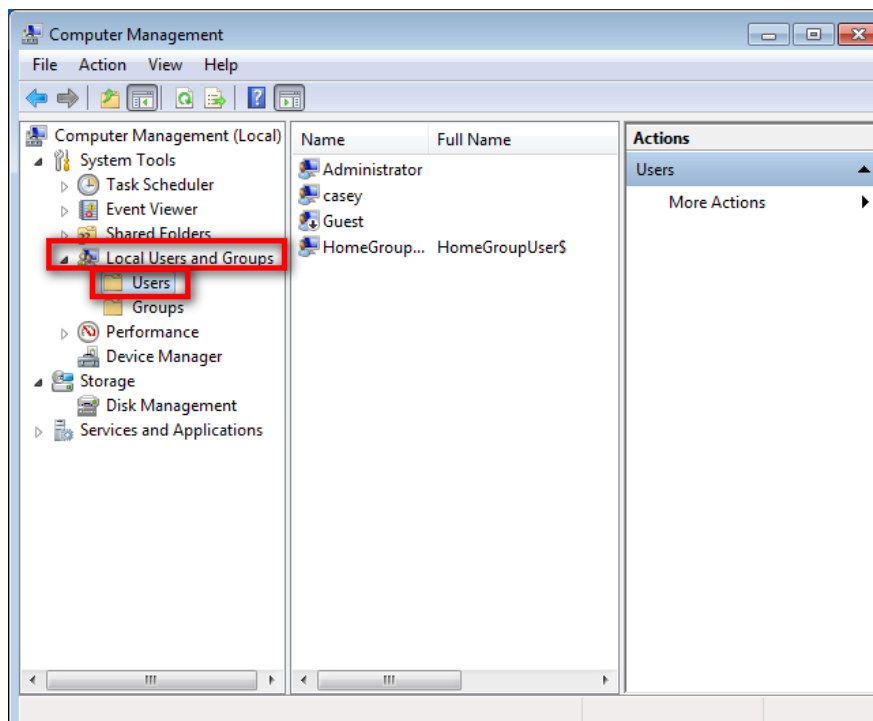


### 3.0 – Enabling the Windows Administrator account

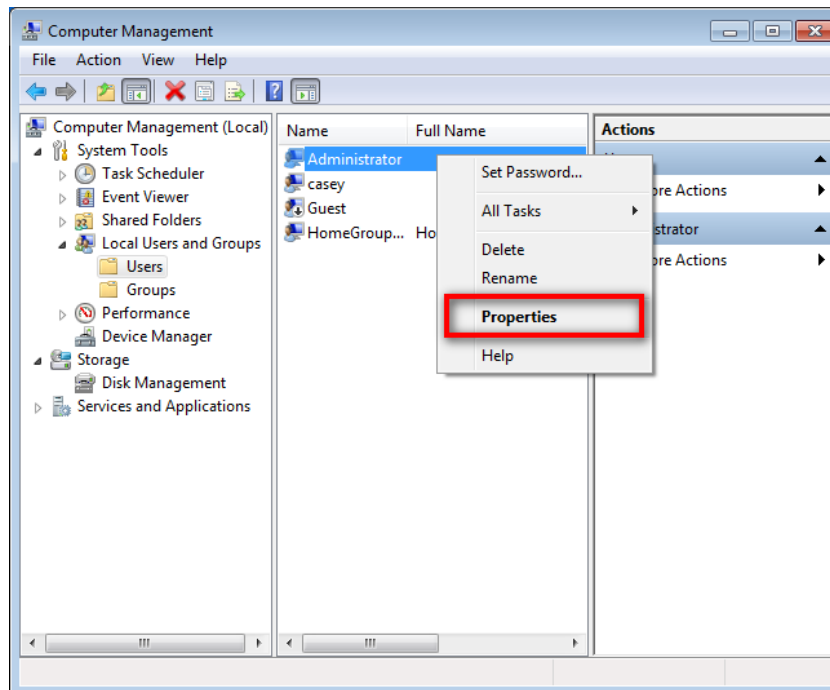
**Step 1:** When logged in as a normal user, click the Windows Start button, right-click “Computer”, and then click “Manage” from the menu that opens.



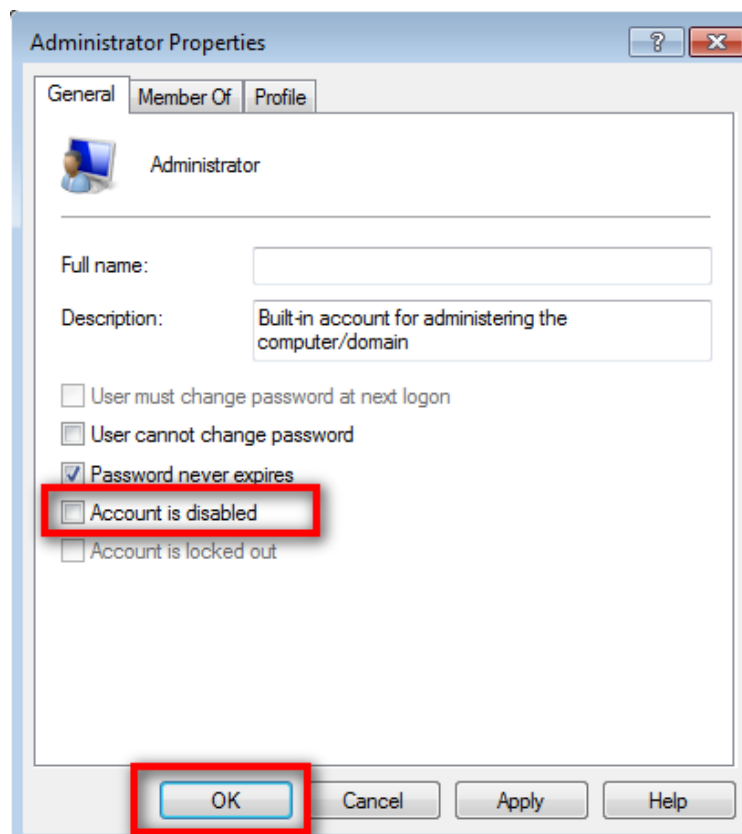
**Step 2:** Double-click “Local Users and Groups” and click “Users”.



**Step 3: Right-click “Administrator” and click “Properties”.**



**Step 4: UN-check “Account is disabled” and click “OK”.**



---

**Congratulations! You are now ready to begin using NavPort! NavPort is now set up to launch automatically during startup the next time the system is turned on. To start NavPort manually, double-click the NavPort icon on the desktop or select it in the Windows Start Menu. For configuration and personalization, see the “NavPort Operations Manual.docx” document.**

