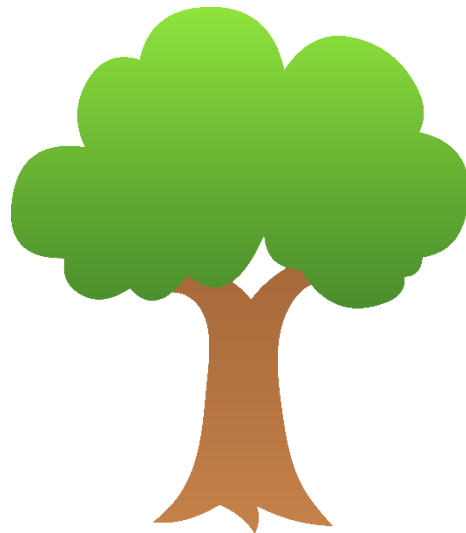


Copeland Run Academy

Health & Safety Plan

Original policy established June 2020

Rev. October 2020, Rev. June 2021, Rev. August 2021



Copeland Run Academy

407 Lloyd Avenue

Downingtown, Pennsylvania 19335

610-269-4423

copelandrun@gmail.com

TABLE OF CONTENTS

| | |
|--|---|
| Introduction..... | 2 |
| Arriving to and Dismissal from School..... | 3 |
| Face Masks..... | 3 |
| Hand Washing..... | 3 |
| Classroom Environment..... | 4 |
| Cleaning..... | 5 |
| Sick Policy..... | 5 |
| Response to COVID-19..... | 6 |
| Education and Communication..... | 6 |
| Visitors..... | 6 |

INTRODUCTION

Copeland Run Academy is committed to the health and safety of our staff, students and their families. The following policies and procedures have been established using information and guidelines from the Centers for Disease Control and Prevention, the Pennsylvania Department of Health, the Pennsylvania Department of Education, the Pennsylvania Office of Child Development and Early Learning and the Chester County Health Department. All policies and procedures stated here within are subject to change as the guidance from these agencies may change. This Health and Safety Policy will be updated if and when changes occur.

PANDEMIC TEAM

The Director and a key staff person will act as the Pandemic Coordinators. They will be responsible for the health and safety preparedness and response planning for Copeland Run Academy.

This includes:

- Identifying and creating a plan of action and response to a pandemic event
- Seeking information and guidance from appropriate government agencies
- Identifying and securing necessary materials and supplies
- Communicating with staff and school families

COVID-19

The 2019 novel coronavirus (COVID-19) is a dangerous disease caused by a virus discovered in December 2019 in Wuhan, China. It is very contagious and has quickly spread around the world.

COVID-19 most often causes respiratory [symptoms](#) that can feel much like a cold, a flu, or pneumonia, but COVID-19 can also harm other parts of the body.

- Most people who catch COVID-19 have mild symptoms, but some people become severely ill.
- Older adults and people who have [certain underlying medical conditions](#) are at increased risk of severe illness from COVID-19.
- Hundreds of thousands of people have died from COVID-19 in the United States.
- Vaccines against COVID-19 are safe and effective.

Symptoms

People with COVID-19 have had a wide range of symptoms reported – ranging from mild symptoms to severe illness. Symptoms may appear **2-14 days after exposure to the virus**. People with these symptoms may have COVID-19:

- Fever or chills
- Cough
- Shortness of breath or difficulty breathing
- Fatigue
- Muscle or body aches
- Headache
- New loss of taste or smell
- Sore throat
- Congestion or runny nose
- Nausea or vomiting
- Diarrhea

ARRIVAL TO AND DISMISSAL FROM SCHOOL

ARRIVAL

A staff member will conduct a symptom and temperature screening of each child before allowing him/her to enter the building. Any child who displays symptoms of illness or who has a temperature of 100.0 degrees F or higher will not be permitted to attend school that day.

Parents may be asked to answer questions about their child's health and/or exposure to COVID-19.

Parents will not be permitted to enter the building.

Upon entry, each child will wash his/her hands with soap and water. Handwashing will be under the supervision of a staff member to ensure a thorough washing for at least 20 seconds.

Staff members will also undergo temperature checks and thorough handwashing upon their arrival to school.

DISMISSAL

Parents are asked to adhere to social-distancing guidelines, remaining at least 6 feet away from others, while waiting for their child. Parents should wait on the sidewalk. Once their child is dismissed and released to them, parents are expected to walk their child to their vehicle. No child will be permitted to enter the parking lot area without a supervising adult.

FACE MASKS

In an update from the Center for Disease Control dated July 9, 2021, current guidance recommends universal indoor masking for everyone, regardless of vaccination status. In accordance with this guidance, Copeland Run Academy requires masks be worn indoors by all staff, students and visitors. Masks may be removed when eating or drinking and when outdoors. If desired, parents may request that their child wear a mask outdoors.

HAND WASHING

Children and adults are required to wash hands with soap and water upon arrival to school; before and after eating; after playing with toys; after playing outside; after sneezing, coughing or blowing their nose and at any time a staff member deems necessary.

Hand sanitizers, containing at least 60% alcohol, will only be used with children when soap and water are unavailable and will always be dispensed and supervised by an adult.

CLASSROOM ENVIRONMENT

LIMITING CONTACT

Students should not bring backpacks, tote bags or other items from home to school unless requested by the teacher.

Each child will be provided with a bin labeled with his/her name to stow his/her belongings such as spare clothes, boots, lunchbox, hat and sunglasses, if needed.

Separate containers of supplies (scissors, crayons, etc.) will be provided for each child and labeled with his/her name so that school supplies are not shared with others.

Separate containers of some play items, including playdough, will be provided for each child and not shared with others.

DISTANCING

To achieve adequate distancing and limit contact, it may be necessary to adjust attendance schedules and/or class times. Parents will be notified if any changes need to occur.

Each class will meet in a separate area.

Each class will be assigned the use of a separate bathroom.

Spending time outdoors will be a priority. Groups will spend as much of their time outside as is feasible for the planned activities and as is appropriate for the weather.

During time spent indoors, activities will be arranged throughout the room to allow for as much distancing as possible.

Within their class, children will be permitted to play together with classmates.

When there is a need to be seated at a table, students will be arranged to allow for maximum distancing as is feasible and appropriate.

CLEANING

Tables will be cleaned and disinfected after playtime and before and after snack and lunch.

Bathroom facilities will be wiped down with disinfectant at a minimum of at the end of each 2.5 hour class session and more frequently as is possible.

Classrooms will be vacuumed at the end of each day.

All trash will be emptied each day.

All surfaces within the classrooms will be cleaned and disinfected at least daily.

Toys will be limited to use by one class at a time. Toys will be cleaned and disinfected regularly and rotated to allow time between uses.

Toys that cannot be safely or easily cleaned will not be made available at this time.

Windows will be opened, as weather permits, to allow the circulation of fresh air.

Fans will be used to circulate the air in classrooms.

SICK POLICY

Any staff member or child who does not feel well will be required to stay home.

Any staff member or child who displays signs of illness while at school will be sent home. A child who becomes ill at school will be moved to a separate room with a supervising adult until a parent or caregiver arrives for pickup.

Any staff member or child who has had vomiting, diarrhea or fever may not return to school until all symptoms are clear for **at least 24 hours** without the use of fever-reducing and anti-diarrheal medications.

To protect students and staff at higher risk for severe illness, consideration will be given for flexible scheduling options.

RESPONSE TO COVID-19

Staff will be trained on identifying and responding to symptoms of COVID-19 as well as other illnesses.

If any of our staff or students identify as having had close contact with someone who has tested positive for COVID-19, we will follow the guidance of the Chester County Health Department, [CCHD - Instructions for Individuals with Close Contact](#)

If any of our staff or students identify as having symptoms of COVID-19, we will follow the guidance of the Chester County Health Department, [CCHD - Instructions for Symptomatic Individuals](#)

If any of our staff or students report testing positive for COVID-19, we will follow the guidance and recommended procedures for schools from the Chester County Health Department regarding cleaning, quarantining or a school closure. This includes providing necessary information to the CCHD to aid in contact tracing. We will communicate the details and recommended actions to our families.

EDUCATION AND COMMUNICATION

Guidelines for hygiene practices will be shared with staff and students. Teaching and reinforcing proper handwashing, covering sneezes and coughs and properly wearing a face covering will be ongoing.

Relevant and appropriate signage will be posted in highly visible locations to encourage behaviors that mitigate the spread of COVID-19.

Through regular communication with staff and parents, we will share information about protective measures to stop the spread of germs and appropriate behaviors that prevent the spread of COVID-19. Communication will be made via email, Facebook messages and posting on the school website.

VISITORS

Families who are interested in enrolling their child at Copeland Run Academy and wish to visit the school, will not be permitted to visit while students are present. Appointments will be made for times when school is not in session.

Therapists or aides who need to meet with a student during school hours, will be required to have their temperature taken and wash hands upon entry, just as our staff members do. When possible, depending on the type of service a child is receiving, the therapy session will take place in an isolated room away from classes.