



# London

---

**Our helpful guide to  
everything you need to  
know for the perfect  
vacation in London**





# Let us give you a brief background to this amazing city



London's journey from a small Roman outpost to a global presence is famous for history, culture, major landmarks, popular theatre shows & musicals - with so many things to do, it continues to be one of the world's most visited cities.

**Did you know? Green spaces takes up 40% of Greater London totalling 35,000 acres!** From beautiful St James's Park, walk less than a mile and past Buckingham Palace, to Hyde Park - where major celebrations for Royale Jubilees have been hosted, music & sporting events, and also where the first-ever **awarding of the Victoria Cross** took place.

This the highest and **most prestigious military decoration** awarded for valour in the British honours system.



## A Brief History

London is the ultimate destination to experience monarchy and tradition:

- **Iconic Ceremonies:** the Changing of the Guard at Buckingham Palace are free and quintessentially British.
- **The Crown Jewels:** Millions visit the Tower of London specifically to see the royal regalia.
- **Share Space with History:** being inside Westminster Abbey - every monarch since 1066 has walked the center aisle and been crowned.

All this and more offers a sense of time that few other cities can match.







## Cultural Diversity

London is one of the world's most culturally diverse cities, with nearly 40% of residents born outside the UK and a significant mix of ethnic groups, making it a global hub for cultures, cuisines, and traditions, reflected in its vibrant neighbourhoods and international population.

## The average vacation is 7 nights

Depending on where you want to visit, we can make arrangements & add more time to visit other cities/destinations like Scotland, Ireland, or Europe.

## The Queue

In the UK we love a queue (an orderly line)  
So whoever arrives first can board their bus, or gets served in a shop or at a ticket desk (cutting a line would not be polite)  
- please join the end and wait your turn.

### London's most visited attractions are:

- **The British Museum** (History & Culture)
- **The London Eye** (Views)
- **The Tower of London** (Royal Heritage)
- **The Natural History Museum** (Science & Architecture)
- **Tate Modern** (Contemporary Art)

# Weather

Here we like to think there's no such thing as bad weather, just bad clothing - so bring a jacket, umbrella or poncho in your bag.

It will vary across regions & we have 100% dry, above 77°F (25°C) days too!



**January:** cold and wet, frequent frost  
34-39°F (1-4°C)



**February:** similar, often the driest winter month  
35-46°F (2-8°C)



**March:** start of spring, increasing daylight hours  
37-50°F (3-10°C)



**April:** known for "April showers" but mostly dry  
40-55°F (4-13°C)



**May:** less rain and temperatures rising  
45-61°F (7-16°C)



**June:** summer is here, longer daylight hours  
48-66°F (9-19°C)



**July:** warmest and sunniest month overall  
55-73°F (13-23°C)



**August:** still higher temperatures, light rain  
53-70°F (11-21°C)



**September:** fall (autumn) begins, generally milder  
49-65°F (9-18°C)



**October:** transition to wetter, cooler weather  
45-57°F (7-14°C)



**November:** similar, rain becomes more frequent  
39-50°F (4-10°C)



**December:** winter bringing colder temperatures  
35-46°F (2-8°C)



# SPEAK LIKE A LOCAL

## A BRIEF GUIDE FOR VISITING LONDON:



An accent is how English is spoken in a particular place - this is universal across languages!

Even if you spend most of your UK visit in London, chances are you will hear many different accents – some of the main ones you can come across are:

- **"Queen's English"** is a standard you'll hear on TV & film, but only spoken by some.
- **Cockney:** a typical Londoner's accent, known for gaps (replacing 't' with a pause, like "buh-er" to say butter) and dropped 'h's.
- **Yorkshire:** known for flat 'a' sounds (so "bath" sounds like "bah-th")
- **Scouse:** people from Liverpool - distinctive, with unique vowel sounds and rhythm.
- **Brummie:** people from Birmingham.
- **Geordie:** people from Newcastle-upon-Tyne.
- **Welsh:** this accent has a musical, pausing rhythm (stronger sound on the second syllable) & distinct vowel sounds (like "music" as "moos-ICK") - this is different from the Welsh language (Cymraeg - which is a distinct Celtic language)

### WHAT TO EXPECT

**You'll be understood:** Most Americans can understand most British accents, especially in tourist areas.

**Local Vocabulary:** there are a few words changes - we say "chips" (fries), "crisps" (chips), "lift" (elevator), "biscuit" (cookie), and "cheers" (thank you)

## KEY DIFFERENCES (BRITISH VS. AMERICAN)

- **R's:** Americans typically pronounce 'r's at the end of words (car, water) however many British accents drop them ("cah", "watah")
- **Vowels:** 'I' sounds in the North can sound like 'ah' ("I like coffee" as "ah like coffee")
- **We love to shorten words:** many regional accents will have their own words & phrases, but overall informal English tends to shorten words.

## TIPS FOR AMERICAN TOURISTS

- 1) **Context:** Focus on the general meaning, not every single word.
- 2) **Be patient:** Especially with strong regional accents, give yourself time to process.

3) **Listen before you go:** hearing different accents in TV & film can help you feel familiar with some accents, or check out different online content - such as UK comedians or celebrity interviews.

4) **Accent & Speed:** if you have trouble understanding, it's fine to politely ask, "Could you say that again, please?" or "Sorry, I didn't catch that." Saying 'Cheers' will earn you a smile.

# Tipping (Gratuities)

Unlike the US, where low wages make tipping essential for staff income, workers in the UK receive a legal minimum wage. Tipping is optional and not expected in the same way it is in the USA. Tips are a bonus for exceptional service, not a core part of their earnings.

## Services & Standard Tip

### Restaurants (good service) 10-15%

this is standard for good to excellent service.

**Taxis 10%** - tip for good service, not essential (rounding to the nearest whole £ pound is appreciated).

**Pubs/Bars** - not expected when you order at the bar, but if you do then £1 is acceptable. If having a full meal in a pub, tip the server as you would in a restaurant.

### Cafés / Take-out ( "takeaways" )

- not expected. Some local, independent cafés may have a tip jar, but it's completely optional.

# Currency

The official currency of the UK is the Pound Sterling  
£ often abbreviated as GBP.

This is the same currency used across the entire UK (England, Scotland, Wales & Northern Ireland)

- One pound £1 is made up of 100 pence (p)
- **Coins:** 1p, 2p, 5p, 10p, 20p, 50p, £1, £2
- **Banknotes:** £5, £10, £20, £50, £100

**Tip:** Please note some shops may not accept notes £50 or higher to pay for smaller purchases.

**Physical US dollars won't be accepted.**



## Exchanging Currency

You can exchange US dollars for Pound Sterling at "Bureaux de Change" (currency exchange offices) found in most major airports, train stations, and city centers.

**Recommendation:** Shop around!

Exchange rates and commission fees can vary widely. It is generally more convenient and often cheaper to use a fee-free ATM or credit card for most transactions.



# Money Matters

## Using Your Debit and Credit Cards

Using a card is the most common way to pay in the UK, similar to the US.

- **ATMs:** You can use your regular US bank card (debit or credit) to withdraw cash. Most international cards with a chip and PIN should be accepted.
- **Charges:** Your US bank will likely charge a fee for overseas withdrawals and point-of-sale payments. Consider using a credit card with no foreign transaction fees to save money.
- **Contactless Payments:** Contactless card payments (tapping your card or using Apple/Google Pay) are the norm in the UK and are accepted in almost all shops, restaurants, and on public transport.
- **Card Acceptance: Visa and Mastercard are widely accepted everywhere.** However, American Express, Discover, and Diners Club are not as readily accepted, so be sure to bring an alternative (Visa or Mastercard).



## The London Pricetag

This might not come as a surprise, as a capital city and major tourism destination, but costs in London are generally higher - a soda in a restaurant can be around \$11 (£8)

**At London restaurants - check the bill** as a 'service charge' is often already added to the total (usually 10-12.5%) if so, you don't need to tip the customary 10-15% on top of the bill.

## Find the balance

London has lots of **world-class free attractions** like the British Museum, Tate Modern, Natural History Museum, the V&A museum (dedicated to human creativity - fashion, furniture and more)



# TRAVEL



## WELCOME TO THE UK

you have arrived, now you  
need to get to your hotel  
- Let us help

### TAXI

The easiest way is by taxi from the airport. There is no guarantee the taxis waiting outside the airport are accessible (with ramps). If you require an accessible transfer we can arrange a taxi for several people including a wheelchair user.



## LONDON CAB DRIVERS

London's taxi service is the best in the world, in part because our drivers of the iconic 'Black Cab' know the quickest routes through London's complicated road network.

There are thousands of streets and landmarks – London cab drivers must memorize all routes & pass 'the Knowledge' (this can take 3–4 years, and has been required since 1865)





# GETTING AROUND & LONDON HEATHROW

The fastest way between London and Heathrow is called the 'Heathrow Express' with direct trains every 15 minutes. Tickets range from £25 single or £42 for a return trip:



## TRAIN & BUS

If you are arriving into London by train then you are likely to come into King's Cross or St Pancras International station. Taking the train from London can connect you to other parts of the UK (and Europe)

- **Accessibility** – there are dedicated wheelchair spaces on trains, and staff are trained to help with boarding using ramps if needed.
- **We can also help** – by making your booking & arranging passenger assistance.

London has one of the most accessible bus networks in the world.

**You can easily tap your card** for any public transport including trains (or use Apple/Google Pay) to pay Contactless – **or the Visitor Oyster Card** offers reduced fares for a similar system – hold flat against the yellow card reader at the start of your journey (and to exit train station ticket gates)

To check out the **free map of Central London bus routes** [CLICK HERE](#) – this also shows top attractions, to help you navigate around this incredible city.



You can fly between many UK airports, or fly to/from Dublin (Ireland) & Belfast (Northern Ireland)





# Day trip to Paris?

We have arranged this for people who want to add a special day trip to their London stay, with the **Eurostar train** – leaving from **St Pancras International station in London**, going directly to the centre of Paris (and other European destinations, like Brussels)

## How long is the Channel Tunnel?

The Channel Tunnel is 31.5 miles long – that's the equivalent of 169 Eiffel Towers stacked on top of each other – and 23.5 miles of the tunnel is under the English Channel, making it the world's longest undersea tunnel.

## What does the Eurotunnel look like underwater?

This may be a disappointing answer, but you can't actually see the sea from the Eurostar. When you go through the tunnel and look out of the window, all you can see is your reflection in the glass because it's quite dark outside (the walls of the tunnel are made of reinforced concrete)



From London you can connect to Europe with many airports, and also via the Eurostar train – connecting to mainland Europe through France. It travels at speeds of 100mph in the tunnel & when outside it can reach 186mph!





# LONDON UNDERGROUND

This is our Subway and the fastest way to get around London - also known as 'the Tube' due to the tube shape of the underground tunnels.

Some stations are very close together - Covent Garden & Leicester Square are only 320 meters apart.

Underground services run from 5AM to midnight daily (Sunday 7AM to 11PM)

The busiest hours are typically Monday-Friday from 6:30 to 9:30AM and from 4 to 7PM.



Currently 93 Tube stations (more than a third of them), more than 60 London Overground stations and all 41 Elizabeth line stations have step-free access (including London Heathrow Airport)

If you are unsure of where to meet passenger assistance - make yourself known to station staff or at the ticket desk. They can check if your journey is step-free, if any boarding ramps need to be provided, and will help you find the platform.



When you arrive at any station, follow the signs for 'level access boarding' - this is a raised area on the platform like a 'road hump' to make this level with the door (no need for ramp placement by staff). Newly built services such as the Jubilee line - the whole platform is level. If any station elevators ('lifts') are not available, some stations can have service elevators (not usually open to the public), or a device that attaches to an escalator (providing a platform). To check out the helpful accessible Tube map [CLICK HERE](#) with how to get around.

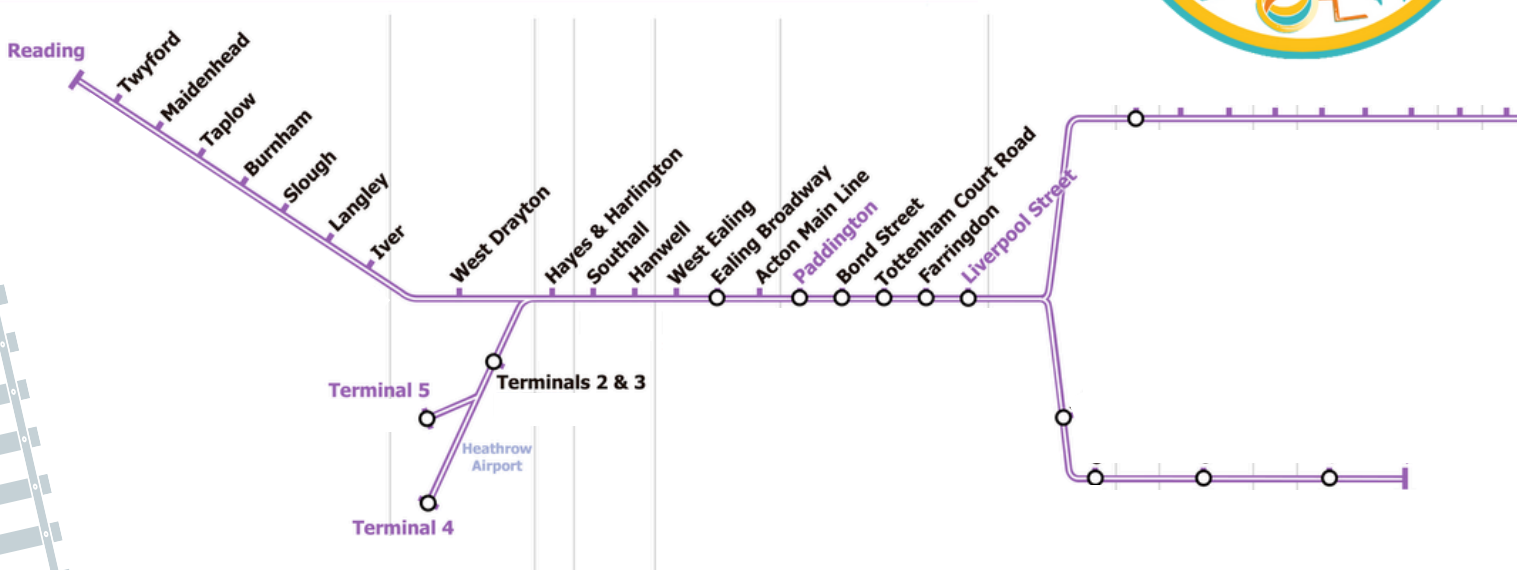


# TIPS

- **The Tube:** each of the 11 Underground lines have a distinct colour with a bold line.
- The Elizabeth Line operates both above and below ground.
- Zoning Out: The city's transport network is divided into 9 zones. Central London falls into Zone 1, while Zone 6 touches the outskirts. **For the popular routes and tourist hotspots, stick to Zones 1 & 2 – Transport for London's interactive map [CLICK HERE](#)**
- Fare Guide: costs range from £6.70 to £9.80, depending on the zone. Save with a 'Visitor Oyster Card', with fares reducing to between £2.80 to £5.60.
- **Keep away from the platform edge and stay behind the yellow line.**
- **When onboard, remember to apply your brakes!**
- There is a button at the accessible area in the carriage to ask for help or speak to the driver.
- Escalator Etiquette: Stand on the right, walk on the left.  
This is a must during busy 'rush hour' with commuters.



## Elizabeth line



To view 'Line' colours & routes individually (like above) click the names here:

- [Bakerloo](#)
- [Central](#)
- [Circle](#)
- [District](#)
- [Hammersmith & City](#)
- [Jubilee](#)
- [Metropolitan](#)
- [Northern](#)
- [Piccadilly](#)
- [Victoria](#)
- [Waterloo & City](#)

To view the full  
Elizabeth Line with all  
stations & more:  
**[CLICK HERE](#)**



# DRIVING / CAR RENTAL

Renting a car in the UK offers the most flexibility – we would recommend not driving in central London as public transport and taxis are much more convenient & there are extra charges with Low Emission Zone (LEZ) restrictions. Major car rental companies can be found at airports and city train stations. **Most rental cars in the UK are manual (stick-shift)** If you require an automatic transmission, be sure to request and confirm this with the rental company when booking.



## Driving Rules (The Differences from the US)

The most important difference is on which side of the road you drive!

### US DRIVING NORM

Drive on the Right

Pass on the Left

Four-way stops.

Speed in kph

### UK LAW

**Drive on the LEFT.** This is the most critical difference.

Overtake (pass) on the Right.

Roundabouts are common. Yield to traffic already in the circle and yield to oncoming traffic from right, keep left (& proceed clockwise), and signal your exit.

All speed limits are in miles per hour (mph)  
Typical limits are: 30 mph in built-up areas, 60 mph on single-lane roads, and 70 mph on highways (motorways).

**Passing places:** drivers must be mindful to slow down (in rural areas & at bends/corners), to be courteous looking for oncoming traffic – passing places allow you to pull into the side.



## Driving distances

You may be used to long drives across or between States, and the UK may seem small in comparison – but to give you an idea of how close (or far) some destinations are:

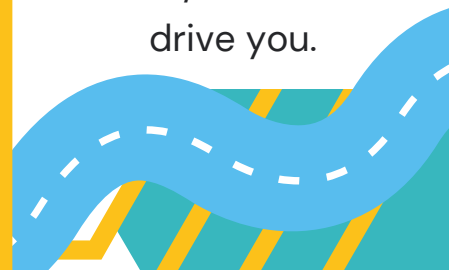
- **London to Edinburgh:** 8 hours (around 400 miles)
- London to Liverpool: 4.5 hours (around 220 miles)
- Liverpool to Glasgow: 4 hours (220 miles)
- + any comfort breaks and depending on the chosen route.

**USA Example: driving from Washington D.C. to New York City is around 230 miles.**

**Taking the Train? This can be a real time saver – from London Kings Cross to Edinburgh Waverley station in just 4.5 hours!**

### Wheelchair accessible vehicles (WAV)

If you want the freedom to explore whilst in Scotland then we can arrange rental with ramp access / someone to drive you.







# Hotels

Our parent company **Altogether Travel** has the UK's largest database of accessible hotel, self-catering and holiday rentals. This means we can find you the right accommodation to meet your needs.

During school break periods hotels tend to be more expensive (April, July, August, October), and over bank/national holidays.

If staying in London – particularly when major events are being hosted then room rates become more expensive, and in peak tourism season availability is harder to get. Book early to secure yours!

US tourists should also know that hotel rooms in the UK tend to be smaller than in the US. They may also not have air conditioning (we have a focus on heating!) and beds typically use duvets instead of top sheets.

You'll be asked to show your passport or other travel document at check-in for a hotel stay. This is a legal requirement for overseas visitors to keep a record of their stay. You will also be asked to put some form of payment card against your room (in case of damages)

Also, pack lighter-weight luggage, as older hotels typically don't have an elevator (lift), and cobblestone streets can be challenging with large suitcases.

## If West End performances are your thing then we can get your tickets sorted:

London's theatre scene rivals Broadway in prestige and production quality. This area – around Leicester Square, Covent Garden, Piccadilly Circus, and Shaftesbury Avenue – is home to around 40 historic theatres.

### Long-Running Classics & Musicals include:

- Les Misérables at the Sondheim Theatre (the world's longest-running musical)
- The Lion King at the Lyceum Theatre (known for its stunning puppetry)
- Wicked at the Apollo Victoria Theatre (the popular global sensation)

To check out What's On [CLICK HERE](#) with performance times.



# GETTING CONNECTED

**Cell Phones** - to use your cell phone in the UK, you will generally need to unlock it and either purchase a local UK SIM card or an eSIM.



## 1. UNLOCK YOUR PHONE BEFORE YOU GO!



Your phone must be "unlocked" to use a different cellular network. Being locked to your current US carrier (like Verizon, AT&T, or T-Mobile) will prevent it from connecting to a UK network while you are here.

**How to Check:** Visit your carrier's website or contact their support team to confirm your phone is unlocked for international use.

**If it's Locked:** Contact your carrier to have your phone unlocked well before your trip.

## 2. CHOOSE A CONNECTION METHOD

Once your phone is unlocked, you have a few options for connecting:

### METHOD

Physical  
UK SIM Card

eSIM

US Carrier -  
International  
Roaming

### PROS

Easy to find at supermarkets, mobile shops, and airports. Provides a local UK phone number.

Highly convenient, no physical card needed. Can be set up quickly via apps like Airalo.

Easiest (no setup).  
Keep your US number.

### CONS

Requires a physical SIM slot. Airport prices may be higher.

Only works on newer smartphone models.

**Warning:** Roaming can be extremely expensive if you don't have a specific international plan.





## Check Your Appliances

It's crucial to check the voltage rating on all your electronic and medical equipment before you travel:

### IMPORTANT EXAMPLE

A few years ago, we had a guest from the US who plugged in a portable medical machine without checking the voltage. It blew the fuse immediately.

If you are traveling with medical equipment, always check its rating and purchase a voltage converter beforehand to ensure it operates safely and correctly.



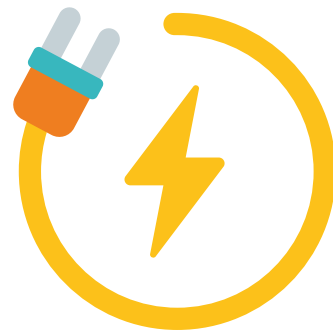
## Appliance Type

### Dual-Voltage

- **Voltage Rating** - labeled as "Input: 100V-240V" (common for phone, camera, or laptop chargers)
- **What to Do** - You only need the plug adapter. The device handles the voltage difference internally.

### Single-Voltage

- **Voltage Rating** - Labeled only for US voltage (e.g., 120V) (common for hair dryers, medical equipment)
- **What to Do** - You must use a voltage converter (or transformer) with your plug adapter to prevent damage or electrical hazard.



# POWER AND ELECTRICITY

When traveling to the UK from the US, you will need a power adapter and possibly a converter.



You can buy one online for about \$8

**Tip:** Some hotels may have spare plug adapters available for guests to borrow that have been left behind by previous visitors. It never hurts to ask!

## Voltage

The UK uses 230V, while the US uses 120V.

- **Adapter:** You will need a Type G power adapter (also known as a UK plug adapter). This allows your US plugs (Type A or B) to fit into UK wall sockets (power outlets), which have three rectangular pins.
- **Voltage:** The UK operates on a higher voltage (230V) than the US (120V).

## Key Advice:

- Save the number 111 in your cell phone.
- Carry your insurance policy details, including the international contact number for your provider, at all times.



## FOR MINOR ILLNESSES: THE PHARMACY FIRST

In the UK, a local community pharmacy (drugstore) is your first stop for minor illnesses. Pharmacists and trained staff offer expert advice, recommend suitable over-the-counter treatments, and can even provide prescription medicine for certain conditions without a doctor's appointment.

## HOW IT WORKS:

Simply walk into any local pharmacy (your hotel can advise the nearest one). A pharmacist will ask about your symptoms to offer the best advice or treatment.

## CONDITIONS THEY CAN HELP WITH:

Pharmacists are trained to help with many common issues, including:

- Coughs and colds, sore throats
- Earaches, sinusitis
- Cold sores, infected insect bites
- Minor issues like certain urinary tract infections (UTIs)

## PAYMENT & INSURANCE:

You will pay for any over-the-counter or prescription medicines provided. Keep all receipts to file a claim with your travel insurance upon returning to the USA.

# HEALTH & MEDICAL CARE



## EMERGENCY CONTACT AND INSURANCE

We strongly advise you to purchase travel insurance for your trip or confirm that your existing US health policy covers you for medical expenses overseas.

### SITUATION: LIFE-THREATENING EMERGENCY

➤ CALL THE EMERGENCY  
NUMBER 999 OR 112  
(EQUIVALENT  
OF 911 IN US)



**For a true emergency, go immediately to the nearest Accident & Emergency (A&E) department (equivalent of a US Emergency Room)**

*Situation: Urgent Medical Need / Not an emergency ➤ call 111 for advice, to be directed to the nearest facility or right service. If appropriate, self-care guidance.*

**NUMBER 111 for calling the 24/7 helpline with our National Health Service professionals.**



# UNDERSTANDING NHS CHARGES FOR US TOURISTS

In the UK – England, Wales, Scotland and Northern Ireland – our healthcare system is run by the National Health Service (NHS) – known as Health and Social Care (HSC) in Northern Ireland –



- **Free Initial Treatment:** Accident & Emergency (A&E) services are free of charge for all visitors, regardless of your country of residence.
- **Potential Charges:** Treatment beyond the immediate A&E care, or for conditions not covered by specific exemptions, will likely incur charges for overseas visitors. This is why having comprehensive travel insurance is essential.
- ✓ • **Always Treated:** Urgent or immediately necessary treatment will always be provided regardless of your ability to pay.



## MEDICATIONS & PRESCRIPTIONS

It is highly recommended that you bring enough of your regular medications to last the entire trip.

**1. Bring Documentation:** Carry a copy of your US prescription and a letter from your doctor for all medications, especially for any controlled substances.

**2. Running Out:** If you need a refill, you should first visit a local General Practitioner (GP – a local doctor) or a pharmacist for advice.

- **Seeing a GP:** You can ask to register as a "temporary patient" to see a local GP. You will likely need to pay as a private patient for both the consultation and any resulting prescription.
- **Pharmacist:** A pharmacist may be able to provide an emergency supply of repeat medication in exceptional circumstances.



### 3. Check Controlled Drugs:

If your medication is considered a "controlled drug" (e.g., strong painkillers or ADHD medication), there are strict UK regulations. Speak with your doctor in the US to confirm the status and documentation required for travel.

### 4. Keep it Simple:

Bring your medication in its original packaging with clear labeling. Be aware that medications may be subject to different regulations in the UK.



# MOBILITY & ACCESSIBILITY



## MOBILITY EQUIPMENT:

## RENT OR BRING YOUR OWN?



### Option

### Pros

### Cons & Caveats

Bring Your Own

Equipment is familiar, custom-fit, and comfortable.

Risk of Damage: Despite precautions, travel (especially by air) often results in damaged equipment.

Rent in the UK

Eliminates the risk of airline damage. We offer a wide range of vetted equipment.

Equipment may be slightly different from what you are used to.

## Our Rental Inventory

We offer a wide range of mobility equipment for rent, which can be delivered directly to your accommodation.

Our inventory includes:

- Electric and manual wheelchairs, and scooters.
- Hoists/lifters and stand aids.
- Shower chairs and bath boards.
- Hospital beds and bed rails.
- And much more – just ask!

## Past Experience Warning:

We've had customers experience broken wheels on hoists/lifts and cracks on shower chairs due to baggage handling.

Although we can usually help rectify the issue ( once, a hotel maintenance man helped install new wheels we sourced ! ) it can certainly get your vacation off to a bad start.



# ACCESSIBLE RESTROOMS (TOILETS)

Most restaurants and all major visitor attractions in the UK will have accessible restrooms that are usually unlocked and easy to access.



## Changing Places Facilities

For individuals who require more complex assistance, such as specialized equipment to use the restroom or change a continence pad, the UK offers " **Changing Places** " facilities.



- These are larger restrooms that include essential equipment like hoists/lifts and changing beds.
- You can use online maps and resources like the Changing Places Toilets website to find the location of these facilities in the UK.

If you need a RADAR Key to access a Changing Places facility, we can purchase one for you and have it delivered to your hotel.

## The RADAR Key Scheme



To access many public disabled restrooms across the UK, tourists will need a **RADAR Key**.

- **What it Is:** The RADAR Key is a universal key that unlocks over 10,000 locked accessible restrooms throughout the UK.
- **Why They are Locked:** Many accessible public restrooms are kept locked to ensure they remain clean and available for the people who truly need them.
- **Easy to Use:** The key itself is twice the size of a standard door key, making it easier to handle and use.
- **How to Get One:** If you would like a RADAR Key for your visit to the UK, we can purchase one for you and have it waiting at your hotel.





# ALCOHOL LAWS

In London (and rest of the UK) the legal age to buy and consume alcohol is 18 years old. You or anyone in your party who looks young will likely be asked for ID before being served.

## RULE

BUYING ALCOHOL

UNDER 18S IN  
LICENSED VENUES

PROOF OF AGE

DRINKING IN PUBLIC

## DETAILS

ILLEGAL FOR ANYONE UNDER 18 TO BUY ALCOHOL.  
AN ADULT BUYING ON BEHALF OF AN UNDER-18 IS ALSO ILLEGAL.

UNDER-18S ARE ALLOWED IN RESTAURANTS AND MANY PUBS THAT SERVE FOOD, BUT THEY CANNOT LEGALLY CONSUME ALCOHOL. THEY USUALLY MUST LEAVE BY A SET TIME, OFTEN 9:00 PM OR 10:00 PM.

VENUES MUST CHECK ID FOR ANYONE WHO APPEARS TO BE 25 OR YOUNGER. ACCEPTABLE FORMS OF ID OFTEN INCLUDE A PASSPORT OR A DRIVER'S LICENSE.

DRINKING ALCOHOL IN PUBLIC PLACES IS GENERALLY PROHIBITED BY LOCAL LAWS, AND POLICE CAN CONFISCATE ALCOHOL.

## VISITING A TRADITIONAL PUB

There are around 2,000 pubs in central London! We are happy to check out accessibility and recommend some pubs near your hotel. Generally you will come across these when out and about, and as with any destination - older buildings may not offer the space or level access needed.

However there are many out there, including pub-restaurant chains in the UK - so you can definitely experience a British pub, if this is on your to-do list!

This can also be the perfect place to try some local 'Pub Grub' - with many British dishes on offer to get a taste of 'Fish and chips', 'Pie and mash', a 'Roast dinner' or many other favourites.







# Restaurants & Eating Out

London has so many places to try for enthusiastic Foodies. Give the local classics a taste - a full English breakfast, 'Sunday Roasts' on any day of the week or an 'Afternoon Tea'. There are distinct areas offering everything from Michelin-starred fine dining to authentic street food:

- **Soho & Covent Garden** (with global eats, theatre)
- **Brick Lane** (curry, vibrant street art)
- **Brixton** (Caribbean, West African, multicultural)
- **Chinatown** (East Asian)
- **Tooting/Southall** (Indian subcontinent)
- **Shoreditch/Hackney** (trendy, diverse international cuisine)
- **Camden Market** (a melting pot of music, food, bars and unique shops)
- **Borough Market** (London's oldest food market & widely considered to be the best food spot) at the southern end of London Bridge.



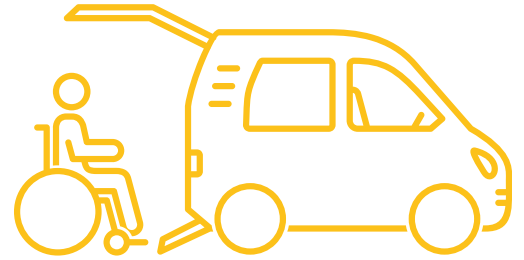
If people watching is your thing - then head to Leicester Square or spend the day around Covent Garden and watch street performers while soaking in the lively atmosphere.



## More Top Attractions:

Buckingham Palace, Tower Bridge, Big Ben, The London Eye, Westminster Abbey, St Paul's Cathedral, Tower of London & lots more!  
To visit Warner Bros. Studio Tour London - The Making of Harry Potter, please be aware this is 1 hour outside of central London.

# ACCESSIBLE TOURS -BY HOUR & DAY TRIPS



Our parent company **Altogether travel** has an excellent range of accessible tours on offer with:

London City Highlights, Harry Potter, Rock 'n' Roll Music Tour ... and Day Trips:

- experience the English Countryside
- Windsor Castle (around 1 hour drive from central London)
- Stonehenge (around 2 hours drive from central London) ... and much more!

**If you'd like further information, please get in touch here:**

**Altogether Accessible Vacations**

[www.altogetheraccessiblevacations.com](http://www.altogetheraccessiblevacations.com)

Email: [hello@altogetheraccessiblevacations.com](mailto:hello@altogetheraccessiblevacations.com)



**Altogether Travel** are experts in accessible tourism.



A registered care provider – our team of experienced carers

(Care Support Assistants) can support you while on vacation if required.

**Altogether Travel** – [www.altogethertravel.co.uk](http://www.altogethertravel.co.uk)

✉ [info@altogethertravel.co.uk](mailto:info@altogethertravel.co.uk) ☎ +44 (0) 141 406 1821



altogethertravel



# COPYRIGHT STATEMENT

Destination Guides Copyright Notice

© 2025 Altogether Accessible Vacations LLC. All Rights Reserved.

The destination guides, travel content, accessibility information, venue reviews, transportation details, and all related materials published on this website and associated with Altogether Accessible Vacations are the exclusive property of Altogether Accessible Vacations LLC, a Wyoming limited liability company.

## NO REPRODUCTION OR DISTRIBUTION PERMITTED:

### This content may not be:

- Copied, altered, modified, or created into derivative works
- Used for commercial purposes without express written permission
- Published, transmitted, or displayed on other websites or platforms
- Used in print materials, brochures, or marketing communications
- Incorporated into travel planning services by other agencies or operators

## PROTECTED ELEMENTS:

### This copyright protection extends to all elements of our destination guides and information provided as part of our services including but not limited to:

- Accessibility venue assessments and ratings
- Transportation route recommendations
- Accommodation accessibility evaluations
- Local expert insights and travel tips
- Photography and visual content
- Maps and itinerary suggestions
- Care service provision details



## ENFORCEMENT:

Unauthorized use of this copyrighted material constitutes copyright infringement under United States federal law and may result in civil and criminal penalties including monetary damages and injunctive relief.

## Permission Requests:

For licensing inquiries or permission to use any portion of this content, contact:

Altogether Accessible Vacations LLC

Legal Department

Website: <https://altogetheraccessiblevacations.com/>

Email: [hello@altogetheraccessiblevacations.com](mailto:hello@altogetheraccessiblevacations.com)

**This notice must remain intact on all authorized copies.**

**© 2025 Altogether Accessible Vacations LLC.**