

LMC

Lewis M. Carter, Mfg.

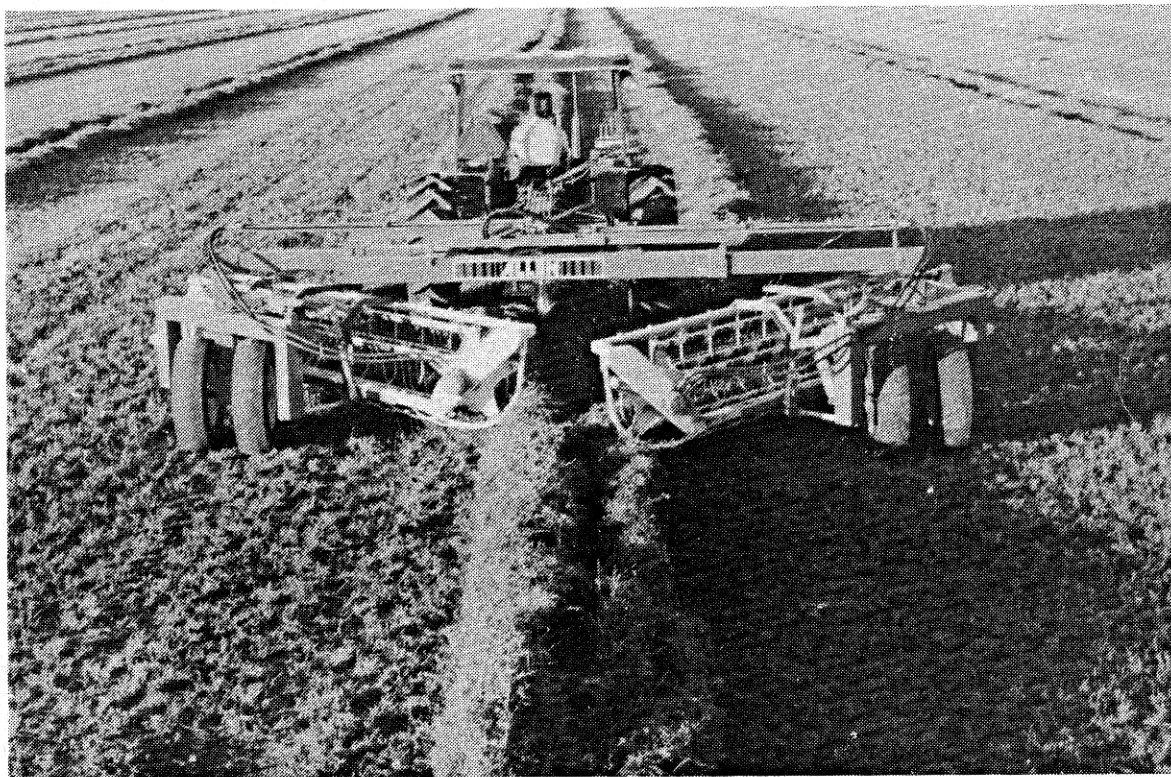
ALLEN 8827 BASKET RAKE

QUALITY

SINCE 1954

SERVICE

"BUILT TO LAST EQUIPMENT"



8827 BASKET RAKE

PARTS MANUAL / JANUARY 1993

PLEASE PLACE ALL ORDERS FOR PARTS AND WHOLE GOODS
THROUGH OUR NEVADA WAREHOUSE PHONE: 888-459-9615 FAX: 775-246-4512

CONTENTS

MAIN FRAME	2
EXTENSION ARMS	4
BASKET ADAPTER, HANGER & LIFT	6
HUB & STAR ASSEMBLY	8
BASKET FRAME, GUARDS & STRIPPER BARS	11
BOTTOM RACK HYDRAULIC SCHEMATIC	12
TOP RACK HYDRAULIC SCHEMATIC	13
SPOOL & CHECK VALVE HYDRAULIC LINE ROUTING	14 & 16
BASKET HANGER & DRIVE MOTOR HYDRAULIC LINE ROUTING (5 func)	18
FLOW CONTROL VALVE	19
BASKET HANGER & DRIVE MOTOR HYDRAULIC LINE ROUTING (3 func)	20
CONTROL BOX	22
MAIN CYLINDER	24
LIFT CYLINDER	25
SWING CYLINDER	26
GAUGE WHEEL	27
INDEX	29, 30 & 31

MODEL 8827 TWIN
MAIN FRAME
(3 and 5 Function)

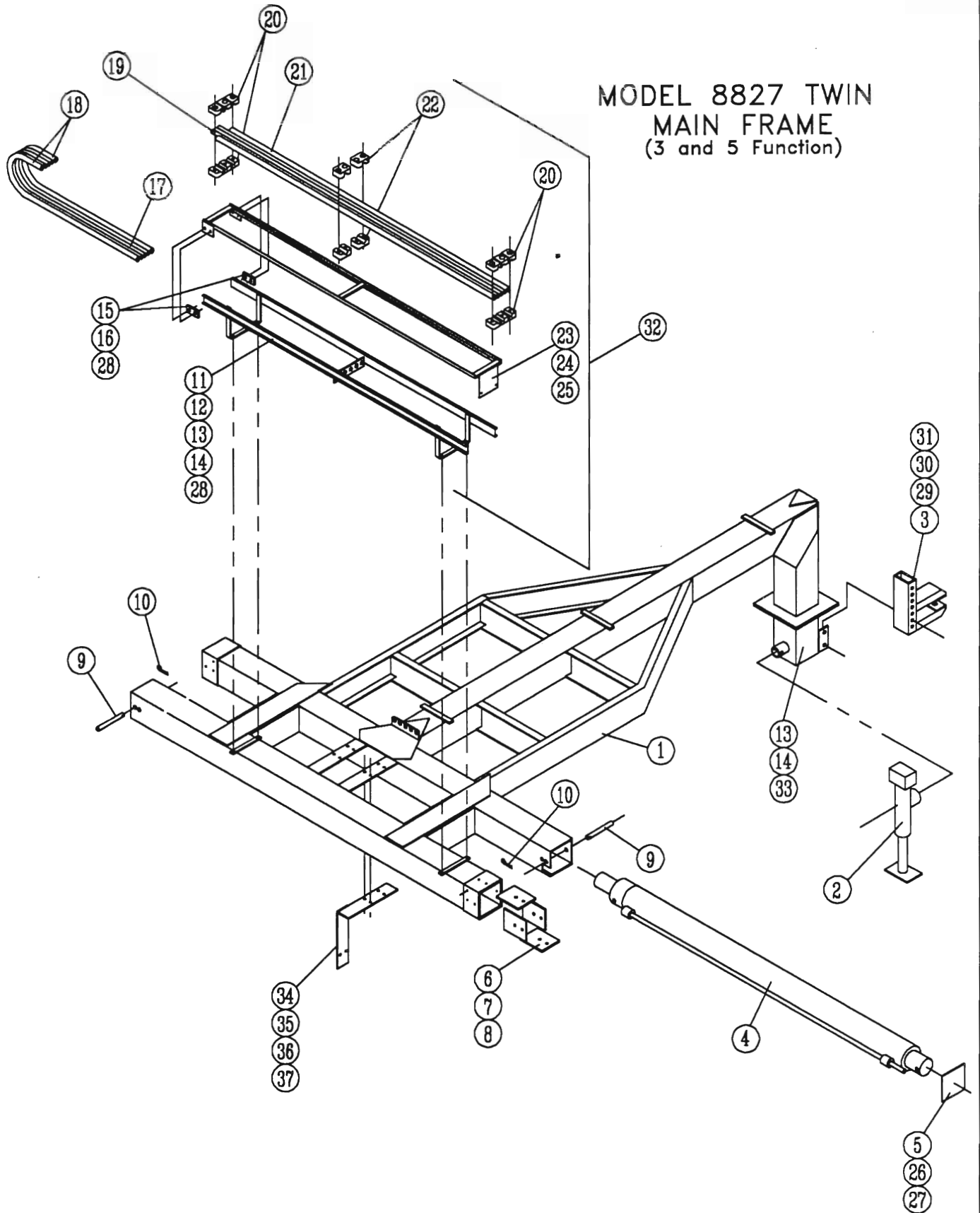


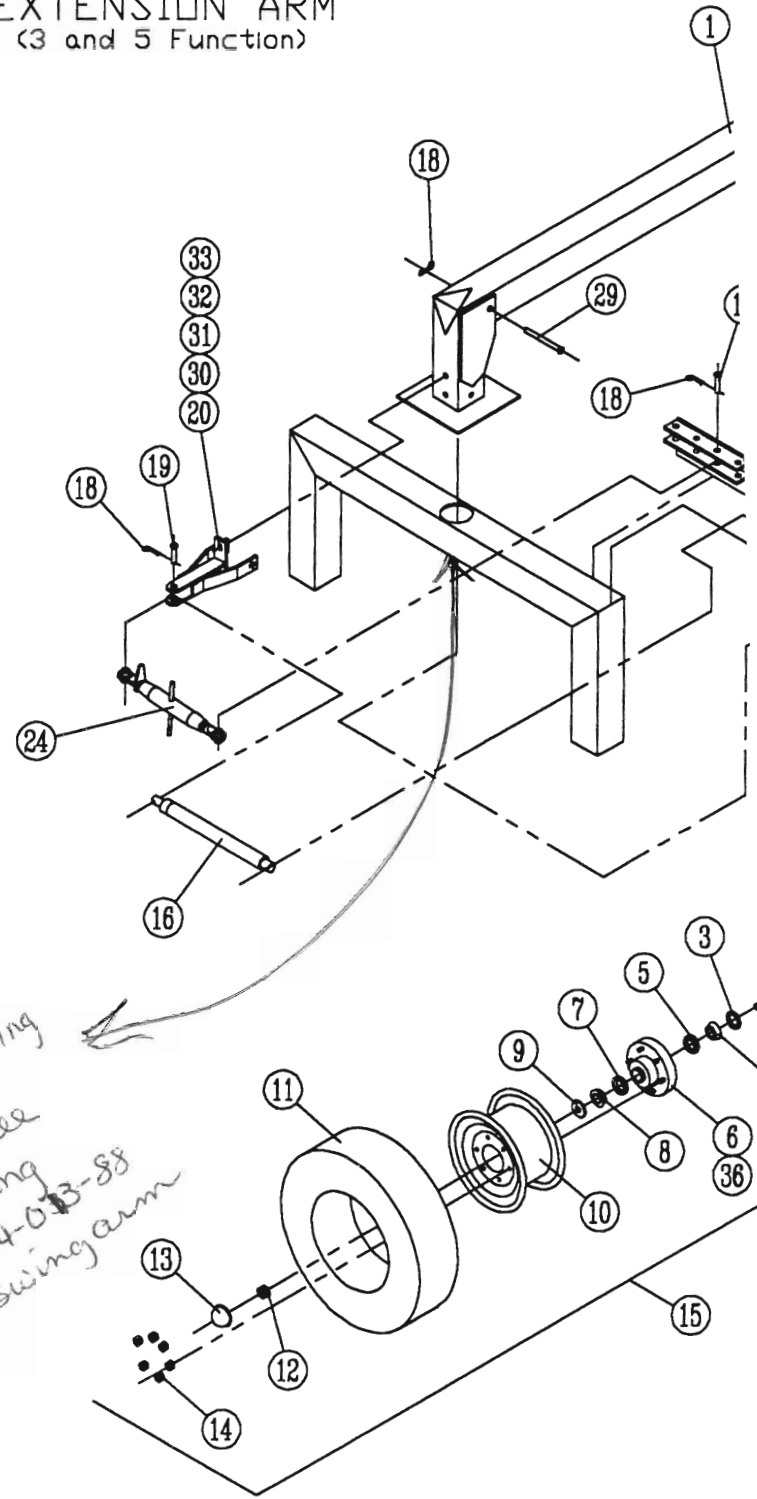
Fig. 1

Main Frame Assembly

No. Req'd.

Ref. No.	Allen No.	Harrell No.	Description	No. Req'd.	
				3 Function	5 Function
1	82100	85-012-88	Main Frame	1	1
2	77115	79-040-88	Jack Stand	1	1
3	76108	85-026-88	Double Lip Hitch	1	1
4	82561	79-007-88	Main Cylinder 1992 & Before	2	2
		79-113-88	Telescoping Cylinder 1993	2	2
5	81114	93-018-88	End Cap	2	2
6	81125	79-003-88	Poly Slide Bearing	8	8
7		2814-1004	Cap Screws 5/16UNC x 1/2"	16	16
8		1412-1000	Hex Lock Nut 5/16UNC	16	16
9	81207	79-086-88	Clevis Pin 3/4" x 6 1/2"	2	2
10	81206	79-043-06	Hair Pin Clip	4	4
11	87313	85-009-88	Guide Rail Right Extension	2	2
12		2814-0810	Cap Screws 1/4UNC x 1"	8	8
13		85-050-88	Lower Hitch Tube	1	1
14		2816-2420	Hex Head Bolt 3/4UNC x 2"	4	4
15	81146	79-001-88	Poly Slide Bearing	4	4
16		1412-0806	Flat Head Screws 1/4UNC x 3/4UNC	8	8
17	87661-A	79-041-88	Hose Ass'y 51" OAL - AR-17	1	6
18	87661-B	79-015-88	Hose Ass'y 51" OAL - AR-17	2	4
19	81155	84-021-88	Tubing 3/8" x 75 1/2"	2	6
20	76389	79-016-88	Tubing Clamp 3/8"	6	18
21	81166	84-022-88	Tubing 1/2" x 75 1/2"	4	4
22	76390	79-012-88	Tubing Clamp 1/2"	12	12
23	82105	85-028-88	Tubing Rack	2	2
24		2814-0804	Cap Screws 1/4UNC x 1/2"	4	4
25		1702-0800	Flat Washers 1/4"	4	4
26		2814-0806	Cap Screw 1/4UNC x 3/4UNC	4	4
27		1702-0800	Flat Washer 1/4" SAE	4	4
28		1412-0800	Hex Lock Nut 1/4UNC	15	15
29		2816-2060	Cap Screw 5/8UNC x 6"	2	2
30		1412-2000	Hex Lock Nut 5/8UNC	2	2
31		1702-2000	Flat Washer 5/8" SAE	2	2
32	82101	84-002-88	Rack Ass'y. (includes items 11-28)		1
33		1412-2400	Hex Lock Nut 3/4UNC	4	4
34		85-040-88	Check Valve Mount	1	1
35		2816-1254	Hex Head Bolt 3/8UNC x 5 1/2"	2	2
36		1412-1200	Hex Lock Nut 3/8UNC	2	2
37		1702-1200	Flat Washer 3/8" SAE	2	2

MODEL 8827 TWIN
EXTENSION ARM
(3 and 5 Function)

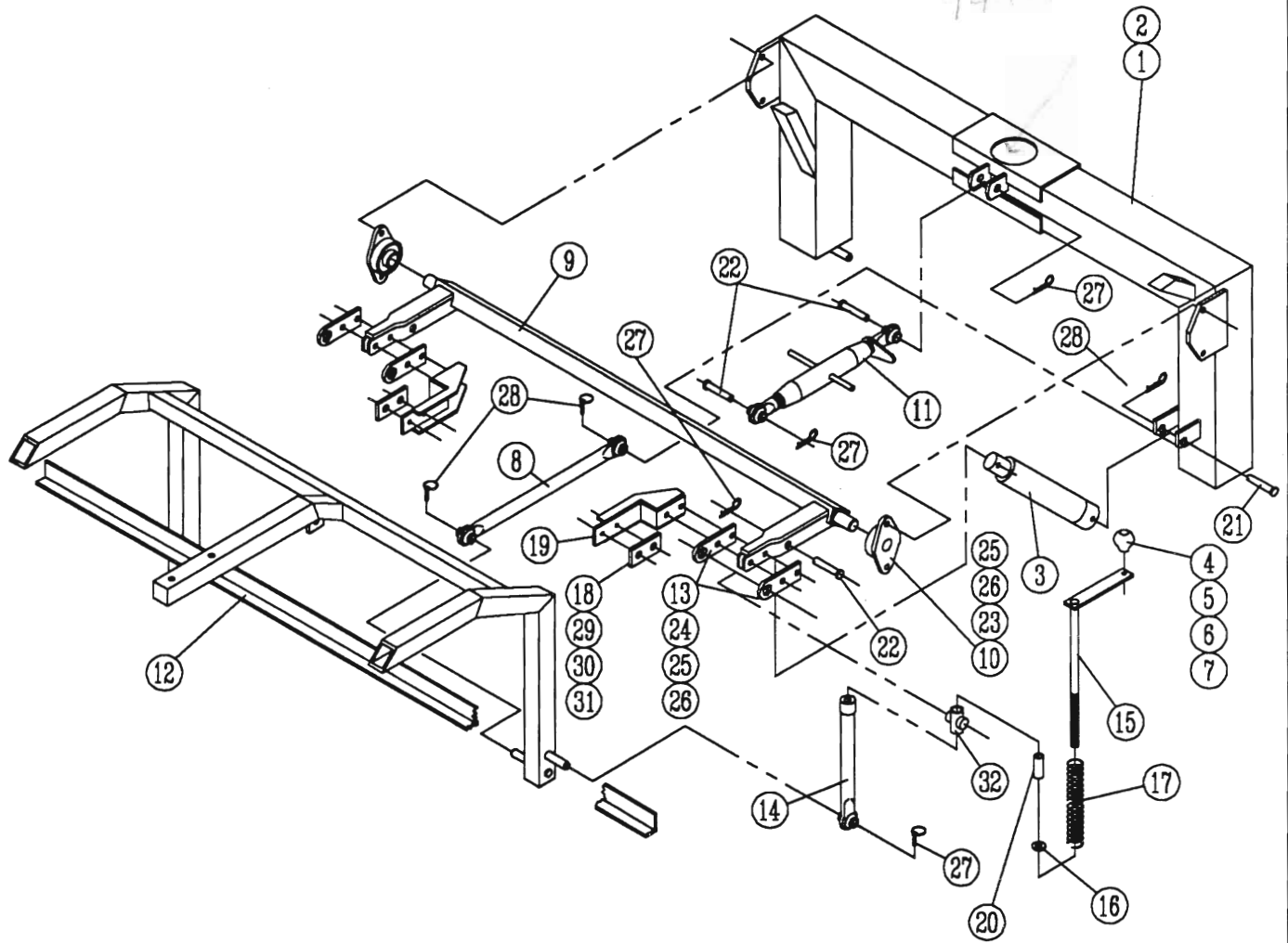


Brass
Bushing
4" O.D.
1/4" wall
2" long
94-013-88
2 per swing arm

Extension Arm Assembly

Ref. No.	Allen No.	Harrell No.	Description	No. Req'd.	
				3 Function	5 Function
1	87200	85-015-88	Extension Arm	2	2
2	81216	96-004-88	Spindle Shaft	4	4
3	81222	77-017-88	Seal	4	4
4	81233	77-018-88	Rear Bearing	4	4
5	81220	77-019-88	Rear Race	4	4
6	81218	77-020-88	6 Bolt Hub With Bolts, & Race	4	4
7	76224	77-021-88	Front Race	4	4
8	76222	77-008-02	Outer Bearing	4	4
9	81224	77-040-88	Special Flat Washer	4	4
10	81235	79-017-88	6 Hole Wheel	4	4
11	81236	79-018-88	Tire (7.50 x 15 Smooth)	4	4
12	81217	77-023-88	Castell Nut	4	4
13	81234	77-026-88	Hub Cap	4	4
14	81223	77-024-88	Lug Nuts	24	24
15	81215	84-008-88	Hub Ass'y.(includes items 2-9 & 12-14)	4	4
16	81501	79-020-88	Cylinder 1992 & Before		2
		79-115-88	Cylinder 1993		2
17	81366	79-079-88	Clevis Pin 5/8" x 2 1/4"		2
18	81522	79-043-06	Hair Pin Clip		4
19	81507	79-080-88	Clevis Pin 3/4" x 2 3/4"	4	2
20	87001	85-016-88	Swing Cylinder Rear Mount	2	2
21	81125	79-003-88	Poly Slide Bearing	8	8
22		2814-1004	Cap Screws 5/16UNC x 1/2"	16	16
23		1412-1000	Hex Lock Nut 5/16UNC	16	16
24	76188	79-022-88	Angle Adjusting Arm	2	
25	87201	85-007-88	Right Hand Lower Axle	1	1
26	87201	85-006-88	Left Hand Lower Axle	1	1
27	87002	85-017-88	Swing Cylinder Front Mount		2
28	87003	85-039-88	Adjustng Arm Front Mount	2	
29		79-087-88	Pin 3/4" x 6"	2	2
30		2816-2460	Hex Head Bolt 5/8UNC x 6"	2	2
31		2816-2064	Hex Head Bolt 5/8UNC x 6 1/2"	2	2
32		1412-2000	Hex Lock Nut 5/8UNC	4	4
33		1702-2000	Flat Washer 5/8"	8	8
34		2816-1234	Hex Head Bolt 3/8UNC x 3 1/2"	4	4
35		1412-1200	Hex Lock Nut 3/8UNC	4	4
36	81238	77-025-88	Stud	6	6

MODEL 8827 TWIN
BASKET ADAPTER,
HANGER & LIFT
(3 and 5 Function)



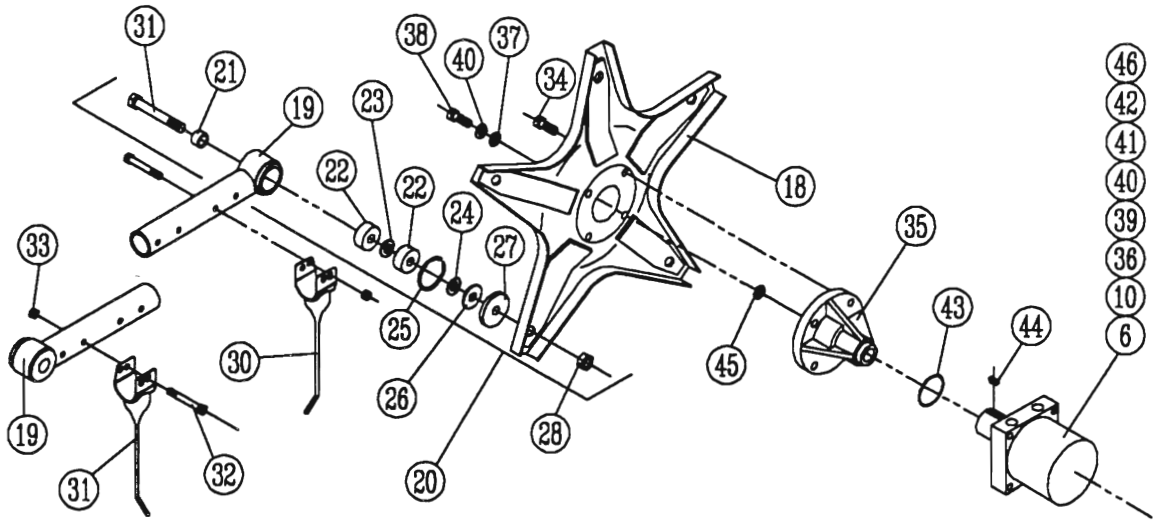
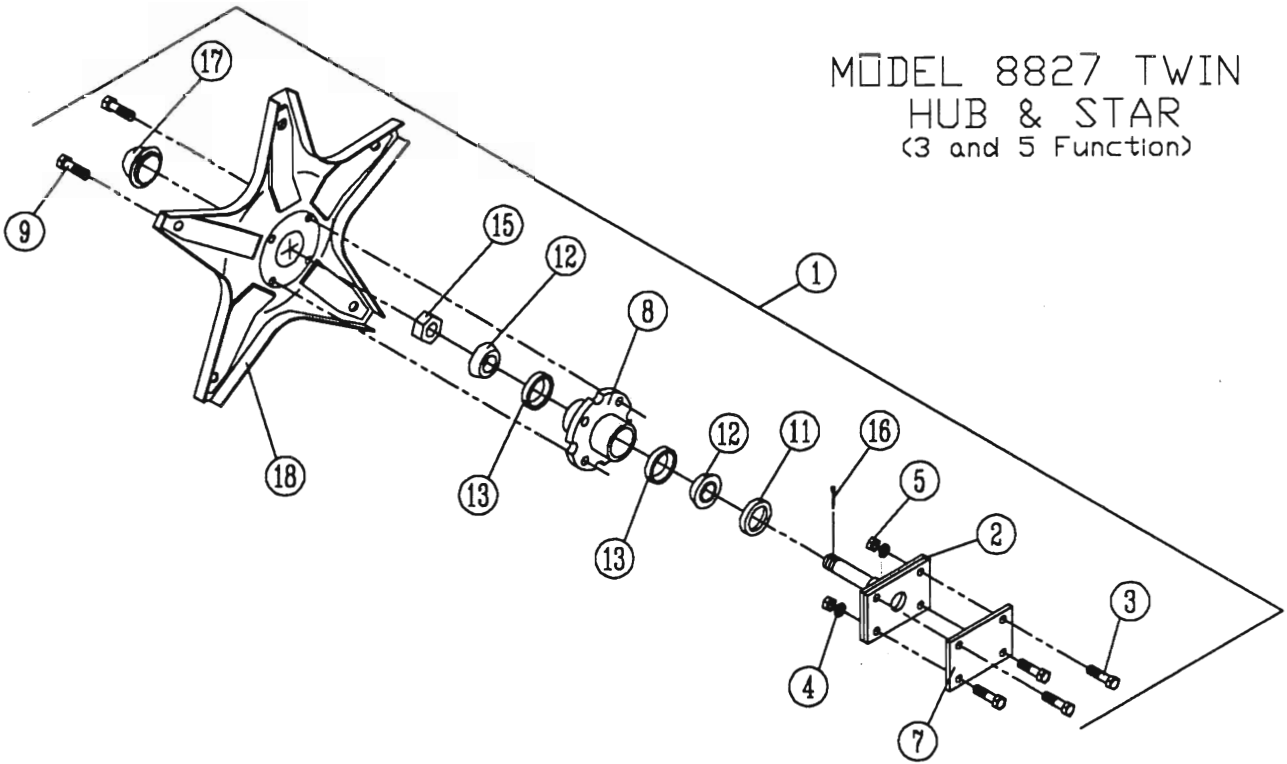
Basket Adapter, Hanger & Lift Assembly

No. Req'd.

Ref. No.	Allen No.	Harrell No.	Description	3 Function	5 Function
1	87004	85-013-88	Left Hand Swing Arm	1	1
2		85-014-88	Right Hand Swing Arm	1	1
3	85124	79-023-88	Lift Cylinder 1992 & Before	2	2
		79-114-88	Lift Cylinder 1993	2	2
4	77035	79-024-88	Crank Knob	4	4
5		2814-1222	Cap Screws 3/8UNC x 2 1/4"	4	4
6		1702-1200	Flat Washers 3/8" SAE	4	4
7		1412-1200	Hex Lock Nut 3/8UNC	4	4
8	85009	85-029-88	Bottom Basket Standoff	4	4
9	85010	85-011-88	Basket Pivot Bar	2	2
10	77102-A	79-025-88	Two Bolt Flange Bearing	4	4
11	76188	79-022-88	Angle Adjusting Arm	2	2
12	85011	85-001-88	Basket Adapter	2	2
13	76190	98-039-88	Guide Mounts	4 set	4 set
14	87005	85-030-88	Ground Pressure Adjusting Arm	4	4
15	87006	85-008-88	Crank Arm 17"	4	4
16		79-126-88	Flat Washer 3/4" Narrow	4	4
17	77042	79-028-88	Spring	4	4
18	87304	79-002-88	Poly Slide Bearing	4	4
19	87305	85-021-88	Basket Adapter Guide	4	4
20		77-066-88	Nylon Bushing	4	4
21		79-082-88	Clevis Pin 3/4" x 3 3/4"	2	2
22		79-081-88	Clevis Pin 3/4" x 3"	6	6
23		2816-1620	Cap Screw 1/2UNC x 2"	8	8
24		2816-1634	Cap Screw 1/2UNC x 3 1/2"	8	8
25		1412-1600	Hex Lock Nut 1/2UNC	16	16
26		1702-1600	Flat Washers 1/2" SAE	16	16
27	81522	79-043-06	Hair Pin Clip	8	8
28		79-045-06	Lynch Pin	12	12
29		0315-1414	Plow Bolt 7/16" x 1 1/2"	8	8
30		1702-1400	Flat Washer 7/16" SAE	8	8
31		1412-1400	Hex Lock Nut 7/16UNC	8	8
32		77-065-88	Adjusting Rod Guide	4	4

76191-B 13 77-045-88 4 77-066-88
 79-027-88 76191 76394
 Guide ~~Bushing~~ Bearing
 14 015-00 1

MODEL 8827 TWIN
HUB & STAR
(3 and 5 Function)



Hub & Star Assembly

No. Req'd.

Ref. No.	Allen No.	Harrell No.	Description	No. Req'd.	
				3 Function	5 Function
1	77127	84-004-88 84-008-88	Hub Ass'y. (inc. items 2-17 exc. 14) <i>after 1992</i>	2	2
2	77128	85-033-88	Hub Spindle 1992 & After	2	2
	77128	85-051-88	Hub Spindle Prior to 1992	2	2
3		2816-1620	Cap Screws 1/2UNC x 2"	8	8
4		1602-1600	Lock Washers 1/2" SAE	8	8
5		1412-1600	Hex Lock Nut 1/2UNC	8	8
6	87308	72-007-88	White Motor Seal Kit	1	1
7	77129	98-035-88	Hub Backing Plate	2	2
8	77014	77-041-88	Hub with Cups 1992 & After	2	2
		77-070-88	Hub with Cups Prior to 1992	2	2
9	77015	77-013-02	Hub Bolt	8	8
10		79-110-88	White Motor Drive Shaft <i>79-039-88</i>	1	1
11	77016	77-044-88	Seal	2	2
12	77077	77-045-88	Bearing	4	4
13	77017	77-046-88	Race (pressed in hub)	4	4
14		2836-2434	Hex Head Bolt 3/4UNF x 3 1/2"	20	20
15	77057	77-048-88	Spindle Nut	2	2
16	77085	77-049-88	Cotter Pin 1/8" x 2"	2	2
17	77056	77-050-88	Hub Cap	2	2
18	77111	85-031-88	Star	4	4
19	81417	85-032-88	Tine Bar <i>84-010-88-W</i>	10	10
20	77067	84-005-88	Bearing & Bolt Ass'y. (items 14,21-29)	20	20
21	77114	94-021-88	Bushing	20	20
22	77069	77-052-88	Sealed Roll Bearing	40	40
23	77070	77-054-88	Shim <i>77-054-88</i>	20	20
24	77071	77-064-88	Spacer	20	20
25	77072	77-055-88	Snap Ring	20	20
26	77073	77-067-88	Heavy Washer <i>(1102-2400 on prior W)</i>	20	20
27	77074	77-056-88	Shield	20	20
28	77082	1432-2400	3/4UNF Stover Lock Nut	20	20
29	87306	92-003-88	Plastic Motor Guard Discontinued After 1992	2	2
30	78020	79-026-88	Tine, R.H. (import)	110	110
		79-109-88	Tine, R.H. (domestic)	110	110

*96-022 88 tine bar head
(1110 H)*

(Cont'd.)

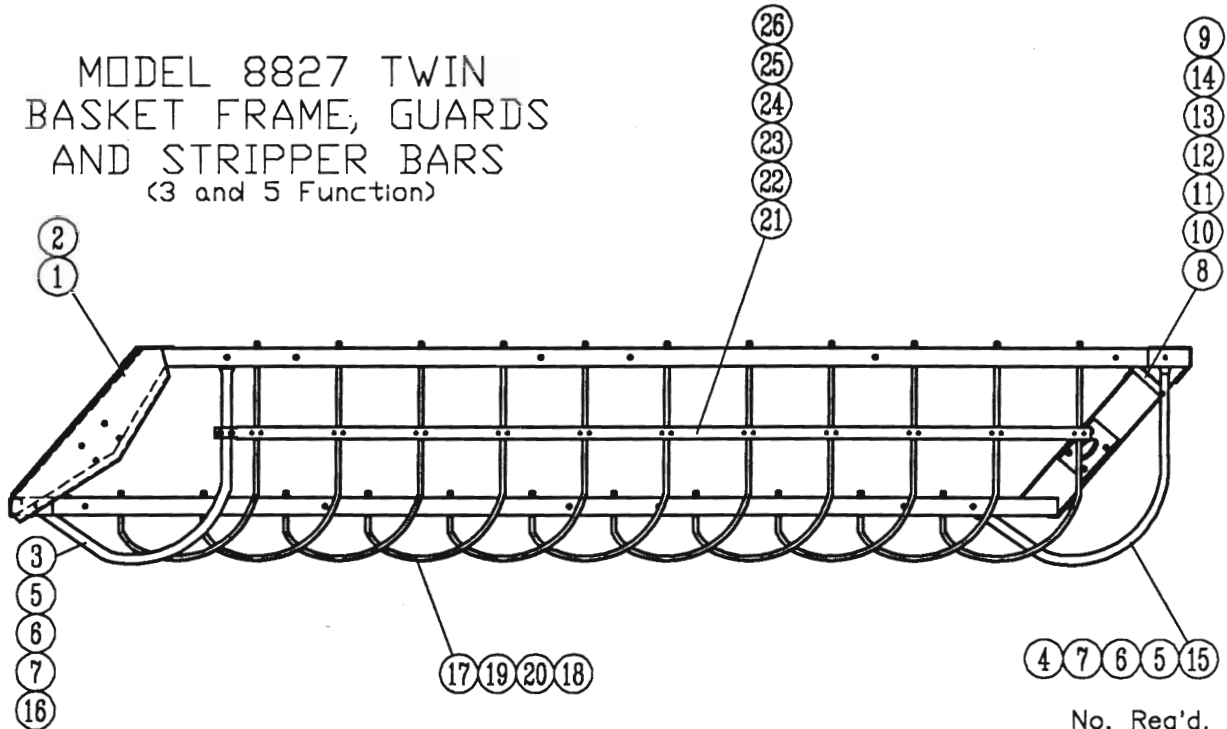
Hub & Star Assembly

(Cont'd.)

No. Req'd.

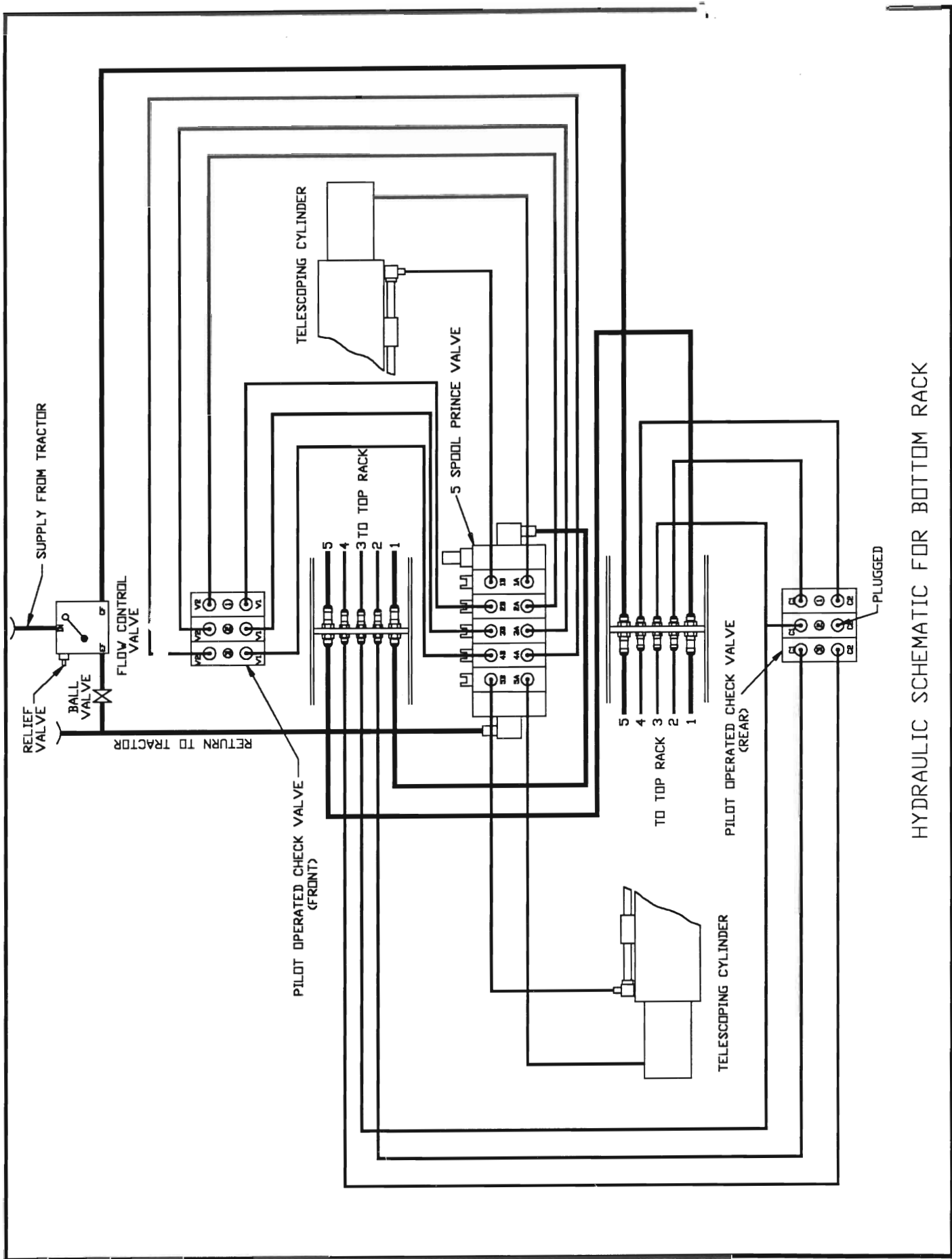
Ref. No.	Allen No.	Harrell No.	Description	3 Function	5 Function
31	78120	79-030-88	Tine, L.H. (import)	110	110
		79-110-88	Tine, L.H. (domestic)	110	110
32		2816-1224	Cap Screws 3/8UNC x 2 1/2" Gr 5	220	220
33		1412-1200	Lock Nuts 3/8UNC	220	220
34	77112	77-013-02	Drive Hub Bolt 1/2UNF	8	8
35	87307	79-031-88	Drive Hub = 82401 - 77088 add key way	2	2
36	81433	79-032-88	Drive Motor (Standard)	2	2
37		1702-2000	Flat Washer 5/8"	2	2
38		2836-2012	Cap Screw 5/8UNF x 1 1/4"	2	2
39		2816-1624	Cap Screw 1/2UNC x 2 1/2" Gr 5	8	8
40		1602-2000	Lock Washer 5/8" SAE	2	2
41		1412-1600	Hex Lock Nut 1/2UNC	8	8
42	87311	79-033-88	Drive Motor Green Chop	2	2
43	16011-A1	79-034-88	Wire Ring	2	2
44	1/4x5/16	79-035-88	Rectangle Key	2	2
45	87312	79-036-88	Shim (as needed) 94-050-88 hub bolt spacer		
46	87309	79-038-88	White Motor Thrust Bearing used #37	2	2

MODEL 8827 TWIN
BASKET FRAME, GUARDS
AND STRIPPER BARS
(3 and 5 Function)

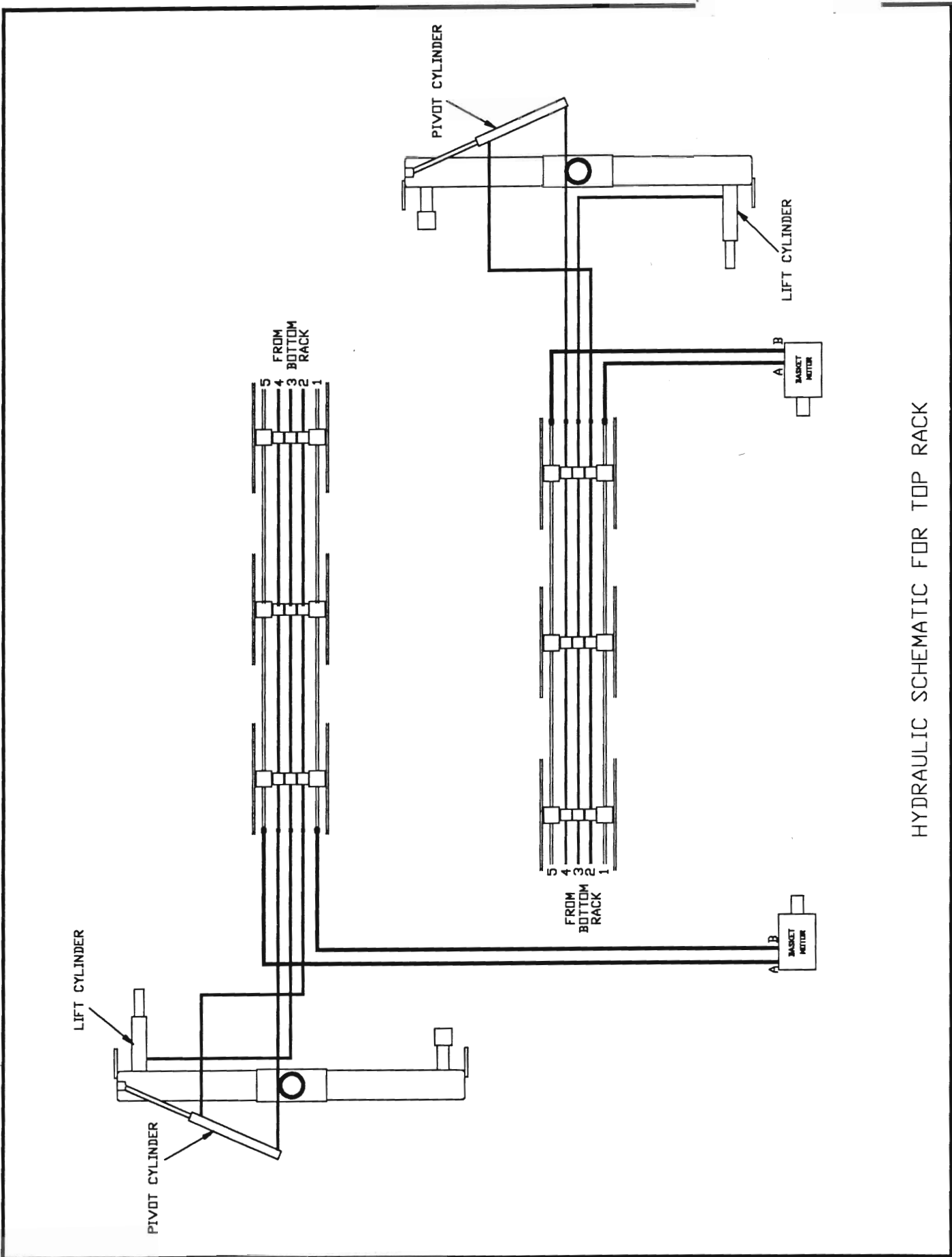


No. Req'd.

Ref. No.	Allen No.	Harrell No.	Description	3 Function	5 Function
1	78242	85-034-88	Right Hand Basket Frame	1	1
2	78342	85-035-88	Left Hand Basket Frame	1	1
3	78016	92-005-88	Hand Front Guard <i>left</i>	1	1
4	78116	92-008-88	Hand Rear Guard <i>right</i>	1	1
5		2814-1616	Cap Screw 1/2UNC x 1 3/4"	8	8
6		1702-1600	Flat Washer 1/2" SAE	8	8
7		1412-1600	Hex Lock Nut 1/2UNC	8	8
8	82404	85-036-88	Right Hand Guard Brace	1	1
9	82405	85-037-88	Left Hand Guard Brace	1	1
10		0514-1220	Carriage Bolt 3/8UNC x 2"	2	2
11		2814-1214	Cap Screw 3/8UNC x 1 1/2"	2	2
12		1702-1200	Flat Washer 3/8" SAE	4	4
13		1412-1200	Hex Lock Nut 3/8UNC	4	4
14		93-081-88	Flat Spacer	4	4
15	78017	92-009-88	Hand Rear Guard <i>left</i>	1	1
16	78117	92-006-88	Hand Front Guard <i>right</i>	1	1
17	78018	96-023-88	Hand Stripper Bar <i>left</i>	11	11
18	78118	96-021-88	Hand Stripper Bar <i>right</i>	11	11
19		1412-2000	Hex Lock Nut 5/8UNC	44	44
20		1702-2000	Flat Washer 5/8" SAE	44	44
21	81471	72-004-88	Stripper Bar Support Group (Includes Items 22-25)	2	2
22	81472	93-035-88	Stripper Reinforcing Bar	2	2
23	77033	79-076-88	"U" Bolt (large)	2	2
24	77034	79-077-88	"U" Bolt (small)	22	22
25		1412-1000	Lock Nuts 5/16" NC	4	4
26		1412-0800	Hex Lock Nut 1/4UNC	44	44

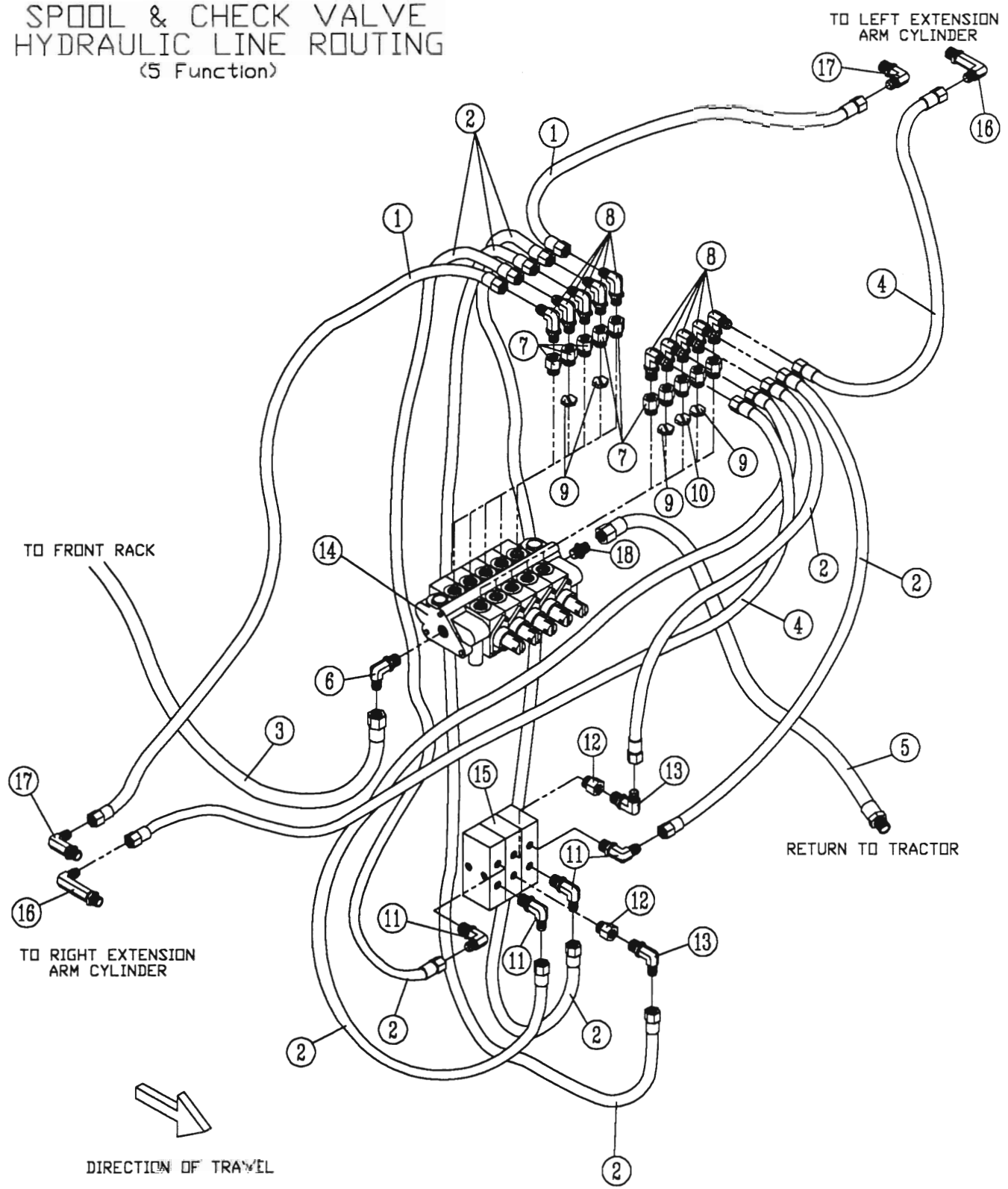


HYDRAULIC SCHEMATIC FOR BOTTOM RACK



HYDRAULIC SCHEMATIC FOR TOP RACK

MODEL 8827 TWIN
 SPOOL & CHECK VALVE
 HYDRAULIC LINE ROUTING
 (5 Function)



Spool & Check Valve Hydraulic Line Routing

(5 Function)

No. Req'd.

Ref. No.	Allen No.	Harrell No.	Description	No. Req'd.	
				3 Function	5 Function
1	87650	79-043-88	Hose Ass'y. 1/4" x 44" - AR 14		2
2		79-101-88	Hose Ass'y. 1/4" x 27" - AR 12		6
3	87612	79-055-88	Hose Ass'y. 1/2" x 42" - AR 4		1
4	87608	79-044-88	Hose Ass'y. 1/4" x 46" - AR 15		2
5		79-102-88	Hose Ass'y. 1/2" x 30" - AR 8		1
6		79-094-88	Straight Thread 90° Elbow		1
7	87611	79-054-88	Straight Thread Reducer		10
8	2062-4-49	79-052-88	Straight Thread 90° Elbow		10
9		77-058-88	Restrictor (.030 Meter Out)		4
10		77-059-88	Restrictor (.020 Meter In)		1
11		79-095-88	JIC 90° Elbow		4
12		79-096-88	JIC Straight Adapter		2
13		79-097-88	90° JIC Swivel Elbow		2
14		79-051-88	Prince 5 Spool Valve		1
	V12-4-4LD-4LD	79-103-88	Gresen 5 Spool Valve		1
15		79-201-28	Check Valve		3
16	202414-4-49	79-009-88	Elbow 90° Pipe To JIC (X-Long)		2
17	2025-4-49	79-125-88	Elbow 90° Pipe To JIC <i>79-095-88</i>		2
18		79-050-88	□-Ring Boss Adapter		1

17

79-008-88

77-077-88 outlet -

ent 86.65

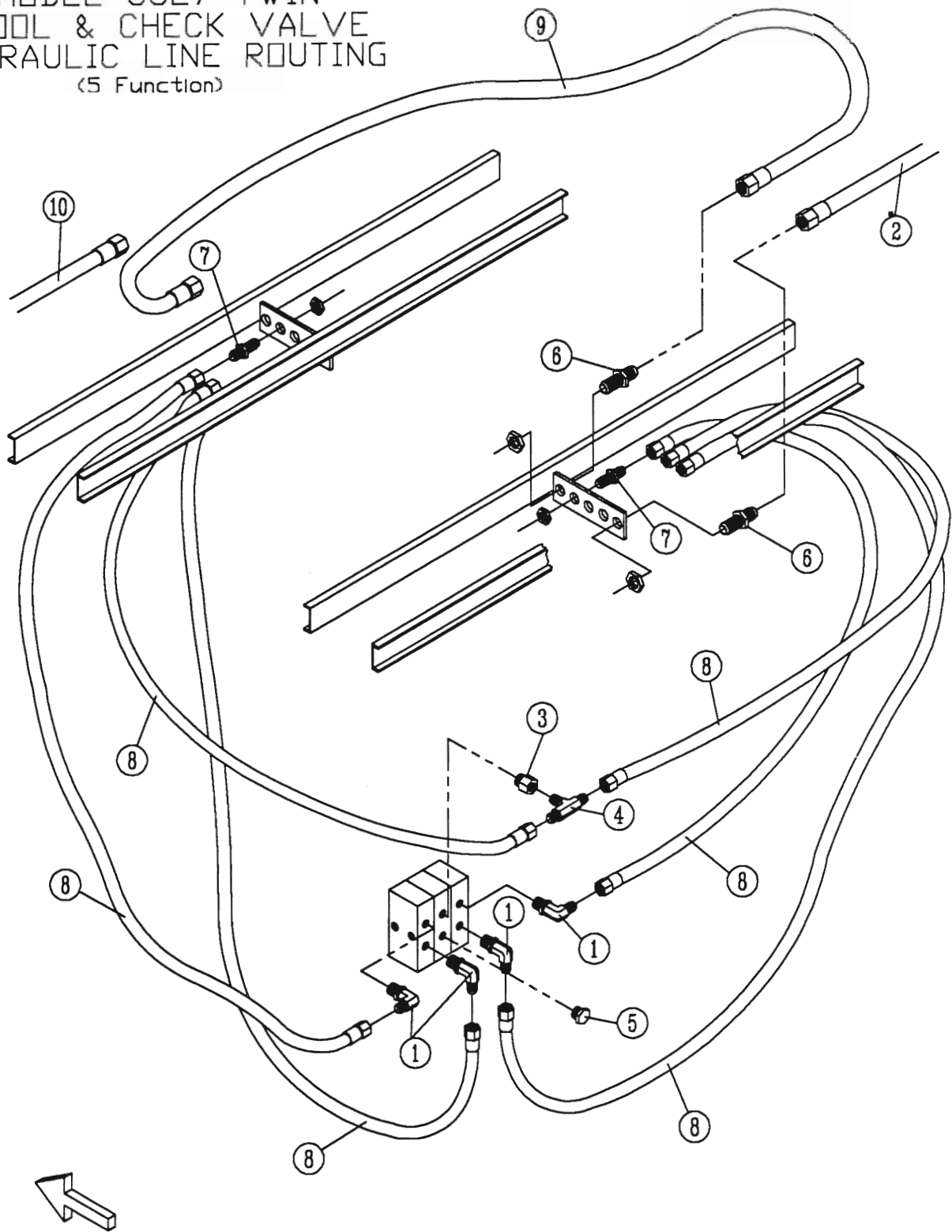
77-078-88 outlet -

104.30

77-076-88 outlets -

191.00 each

MODEL 8827 TWIN
 SPOOL & CHECK VALVE
 HYDRAULIC LINE ROUTING
 (5 Function)



DIRECTION OF TRAVEL

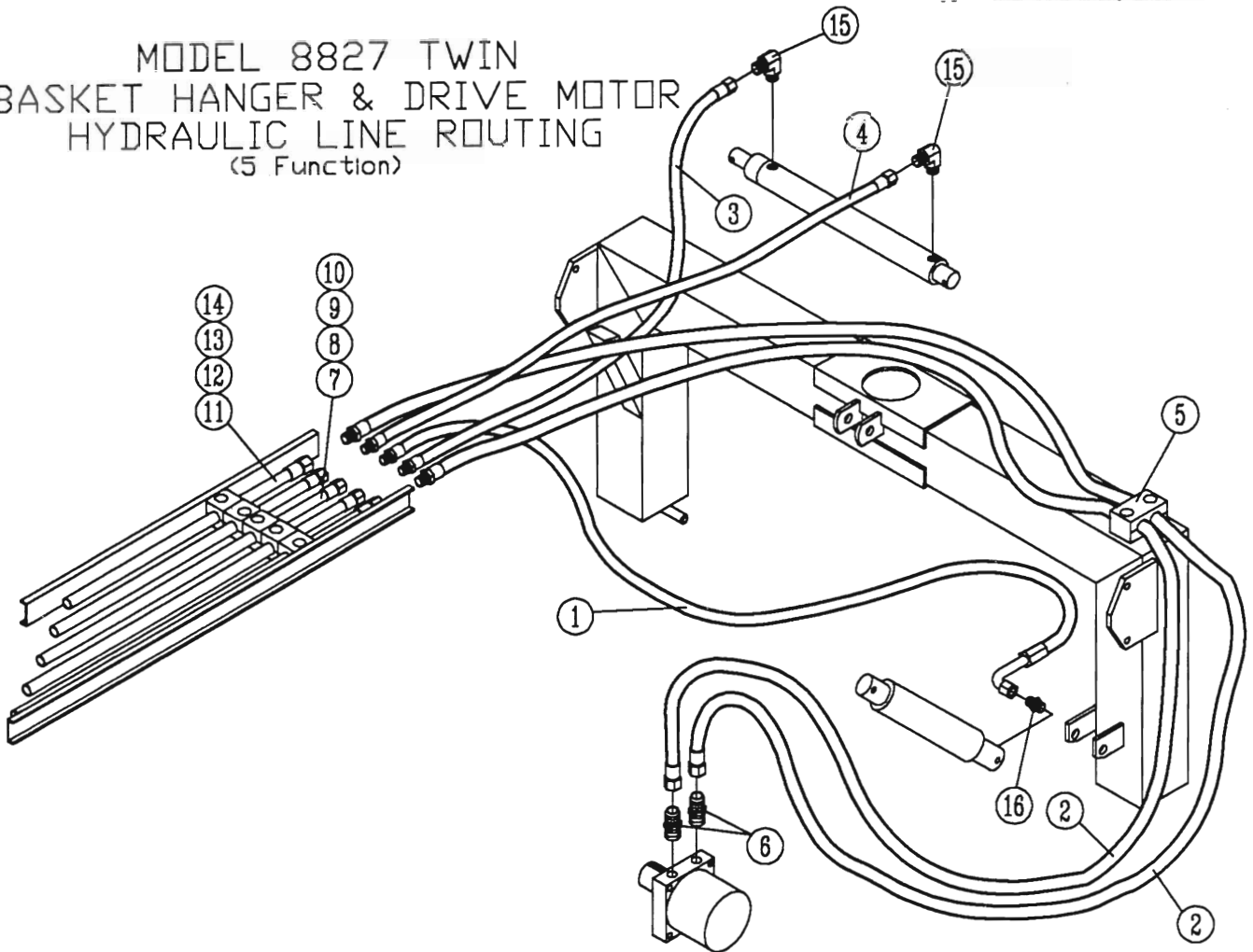
Spool & Check Valve Hydraulic Line Routing

(5 Function)

No. Req'd.

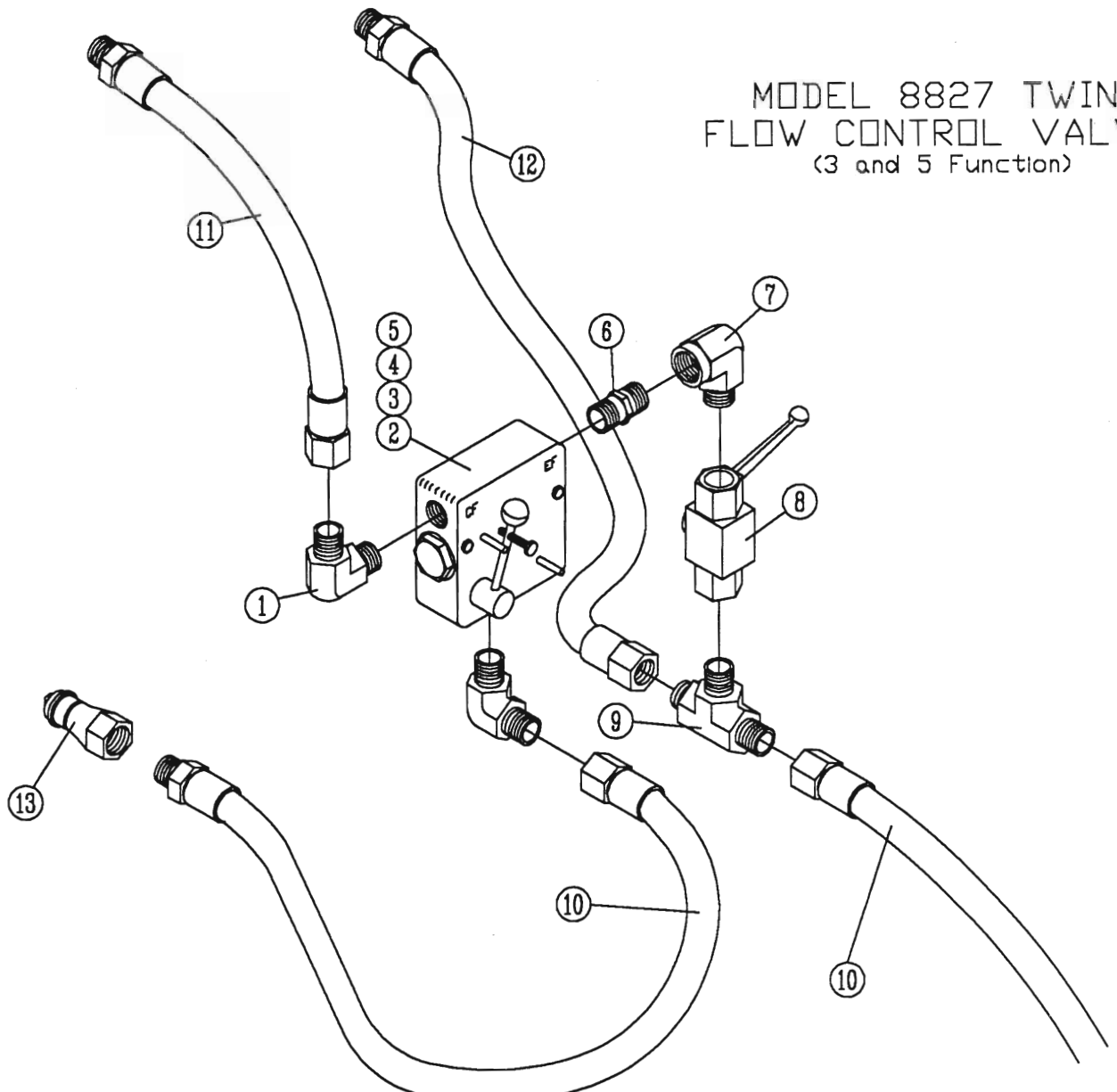
Ref. No.	Allen No.	Harrell No.	Description	No. Req'd.	
				3 Function	5 Function
1		79-095-88	JIC 90° Adapter		4
2	87612	79-055-88	Hose Ass'y. 1/2" x 42" - AR-8		1
3		79-096-88	JIC Straight Adapter		1
4		79-099-88	JIC Swivel Branch Tee		1
5		79-100-88	Straight Thread Plug		1
6	2041-8-89	79-083-88	#8 Bulkhead Fitting		4
7	2041-4-44	79-013-88	#4 Bulkhead Fitting		6
8	87647	79-047-88	Hose Ass'y. 1/4" x 27" - AR-13		6
9	87648	79-046-88	Hose Ass'y. 1/2" x 62" - AR-5		1
10	87610	79-049-88	Hose Ass'y. 1/2" x 41" - AR-9		1

MODEL 8827 TWIN
 BASKET HANGER & DRIVE MOTOR
 HYDRAULIC LINE ROUTING
 (5 Function)



Ref. No.	Allen No.	Harrell No.	Description	3 Function	5 Function
1	87600	79-062-88	Hose Ass'y. 60" - AR-16 4FJIC Swivel x Short 90 4JIC	2	2
2	87658	79-061-88	Hose Ass'y. 95" - AR-6 8FJIC Swivel x 8MJIC	4	4
3	87603	79-065-88	Hose Ass'y. 32" - AR-11 4FJIC Swivel x 6MJIC		2
4	87602	79-064-88	Hose Ass'y. 42" - AR-10 4FJIC Swivel x 6MJIC		2
5		79-108-36	3/4" Twin Hose Clamp	2	2
6	202702-10-89	79-050-88	"□" Ring Boss to 37° Flare	4	4
7	81155	84-021-88	Tubing Ass'y. 3/8" x 75 1/2"	2	6
8		94-027-88	Tubing 3/8" x 75 1/2"	2	2
9		77-060-88	Flareless Tube End Cap	4	12
10		77-061-88	Ferrule 3/8" □.D. Tubing	4	12
11	81166	84-022-88	Tubing Ass'y. 1/2" x 75 1/2"	4	4
12		94-028-88	Tubing 1/2" x 75 1/2"	4	4
13		77-062-88	Flareless Tube End Cap	4	12
14		77-063-88	Ferule 1/2" □.D. Tubing	8	12
15		79-124-88	Straight Thread Elbow		2
16		79-121-88	Straight Thread Adapter		2

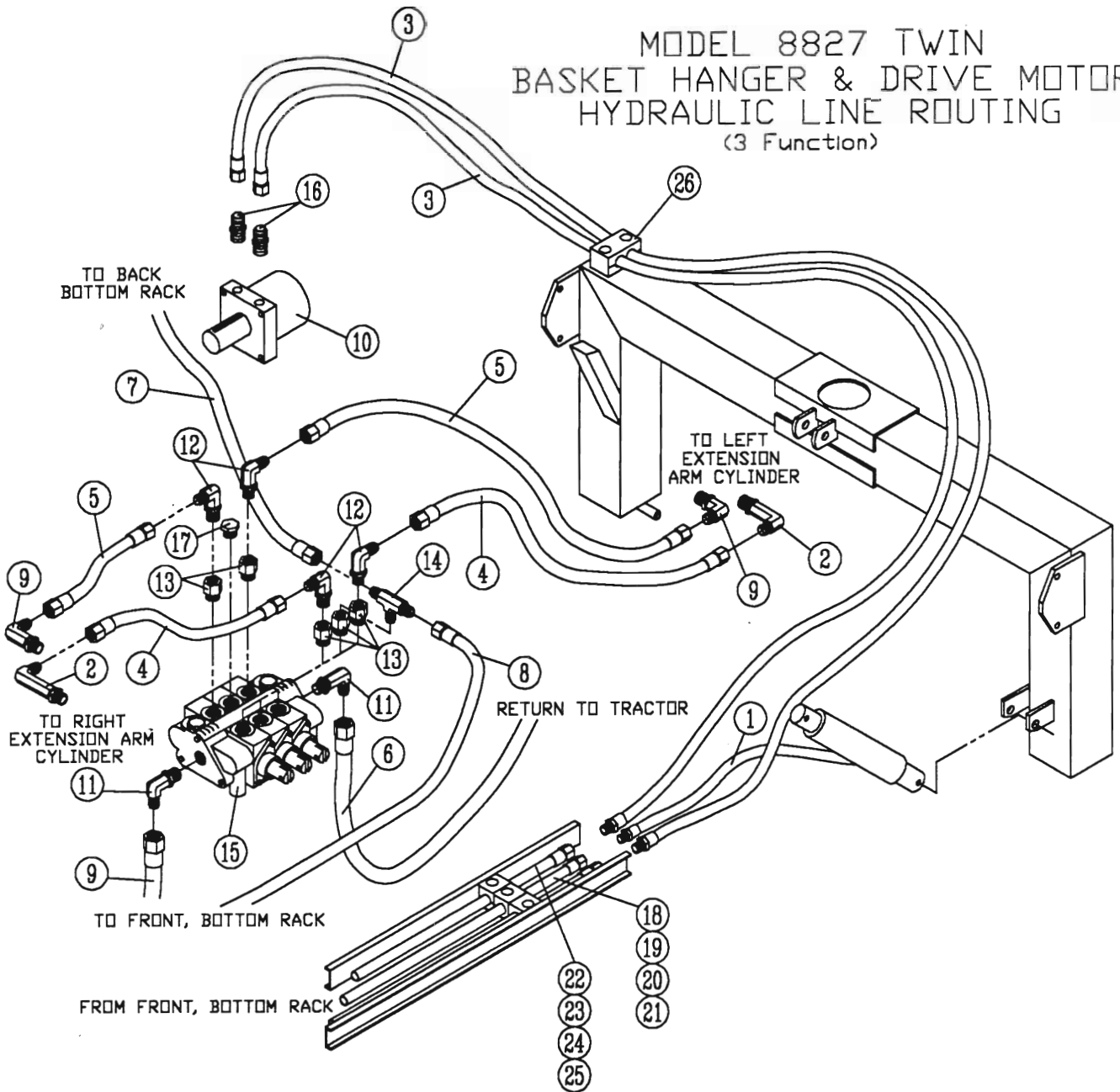
MODEL 8827 TWIN
FLOW CONTROL VALVE
(3 and 5 Function)



No. Req'd.

Ref. No.	Allen No.	Harrell No.	Description	3 Function	5 Function
1	2024-8-89	79-070-88	Male Elbow	2	2
2	76260	79-042-88	Flow Control Valve	1	1
3		1412-0800	Hex Lock Nut 1/4UNC	2	2
4		2816-0824	Hex Head Cap Screw 1/4UNC x 2 1/2"	2	2
5		1702-0800	Flat Washer 1/4" SAE	2	2
6		79-068-38	Pipe Nipple	1	1
7	2089-8-89	79-069-88	Street Elbow	1	1
8	444YB1/2	79-072-88	Ball Valve	1	1
9		79-112-88	Male Branch Tee	1	1
10	87660	79-068-88	Hose Ass'y. 1/2" x 66" - AR-1	2	2
11	87607	79-071-88	Hose Ass'y. 1/2" x 20" - AR-2	1	1
12	87604	79-066-88	Hose Ass'y. 1/2" x 18" - AR-3	1	1
13		79-212-36	Quick Disconnect Adapter	2	2

MODEL 8827 TWIN BASKET HANGER & DRIVE MOTOR HYDRAULIC LINE ROUTING (3 Function)

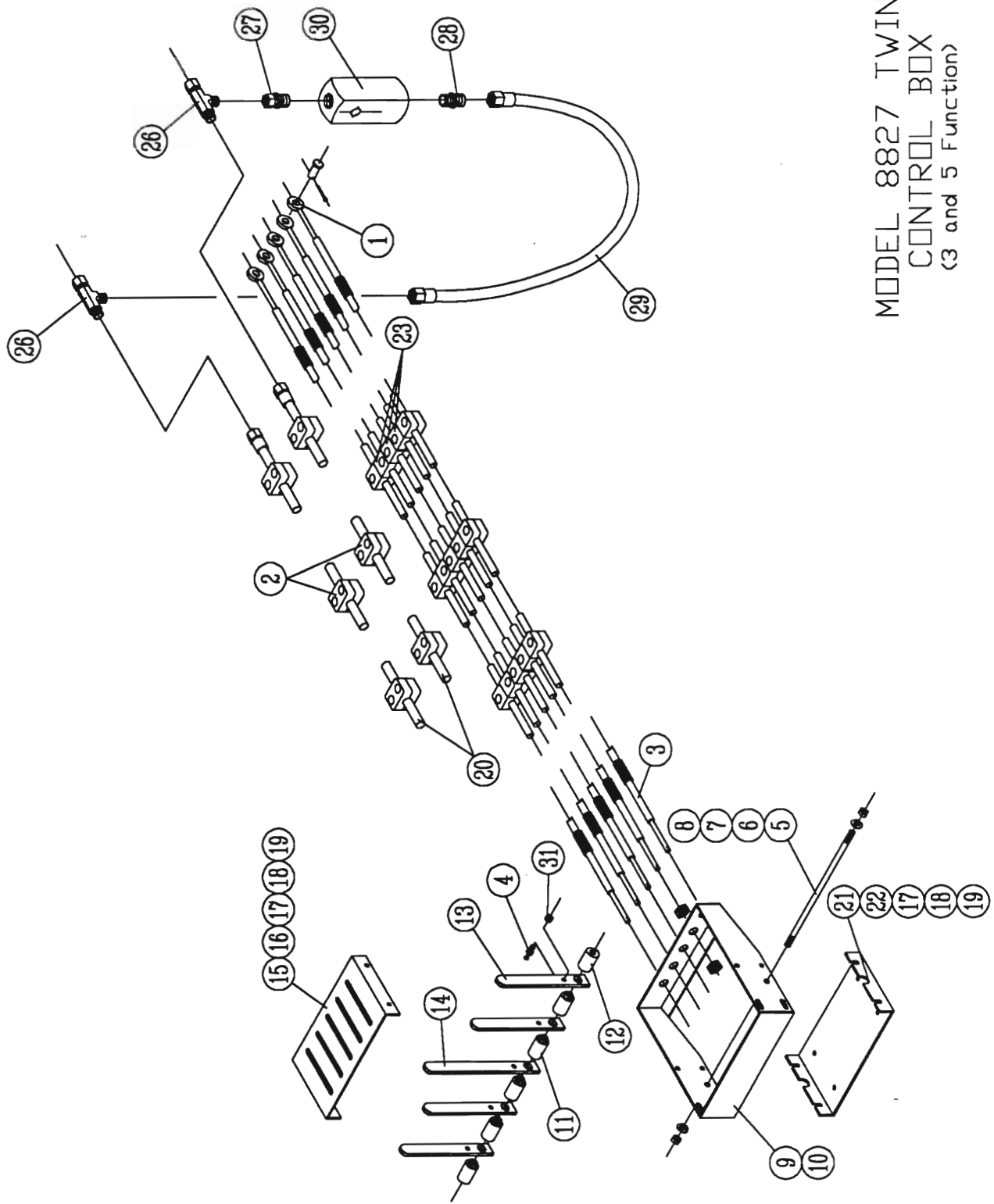


Basket Hanger & Drive Motor Hydraulic Line Routing

(3 Function)

No. Req'd.

Ref. No.	Allen No.	Harrell No.	Description	3 Function	5 Function
1	87600	79-062-88	Hose Ass'y. 60" - AR-16 4FJIC Swivel x Short 90 4JIC	2	
2	202414-4-49	79-009-88	Elbow 90° Pipe To JIC (X-Long)	2	
3	87658	79-061-88	Hose Ass'y. 95" - AR-6 8FJIC Swivel x 8MJIC	4	
4	87608-A	79-090-88	Hose Ass'y. 56" 4FJIC x 4FJIC	2	
5	87650-A	79-057-88	Hose Ass'y. 57" 4FJIC Swivel x Long 90° 4JIC	2	
6	87612	79-055-88	Hose Ass'y. 42" - AR-4 8FJIC Swivel x 8FJIC Swivel	1	
7	87610	79-049-88	Hose Ass'y. 41" - AR-9 8FJIC Swivel x 8MJIC Swivel	1	
8	87647	79-101-88	Hose Ass'y. 27" - AR-12 4FJIC Swivel x 4MJIC	2	
9	2025-4-49	79-125-88	Elbow 90° Pipe To JIC ^{1/4}	2	
10	81433	79-032-88	Hydraulic Drive Motor	2	
11		79-094-88	Straight Thread Adapter	2	
12	2062-4-49	79-052-88	Straight Thread 90° Elbow	4	
13	87611	79-054-88	Straight Thread Reducer	5	
14	203003-4-49	79-053-88	JIC Swivel Branch Tee	1	
15	V124-4LD-4-LHD	79-059-88	Gresen 3 Spool Valve - 79-030-85	1	7487.50
		79-105-88	Prince 3 Spool Valve		
16	202702-10-89	79-050-88	"□" Ring Boss to 37° Flare	2	
17		79-100-88	Straight Thread Plug	1	
18	81155	84-021-88	Tubing Ass'y. 3/8" x 75 1/2"	2	
19		94-027-88	Tubing 3/8" x 75 1/2"	2	
20		77-060-88	Flareless Tube End Cap	4	
21		77-061-88	Ferule 3/8" O.D. Tubing	4	
22	81166	84-022-88	Tubing Ass'y. 1/2" x 75 1/2"	4	
23		94-028-88	Tubing 1/2" x 75 1/2"	4	
24		77-062-88	Flareless Tube End Cap	8	
25		77-063-88	Ferule 1/2" O.D. Tubing	8	
26		79-108- 88	3/4" Twin Hose Clamp	2	

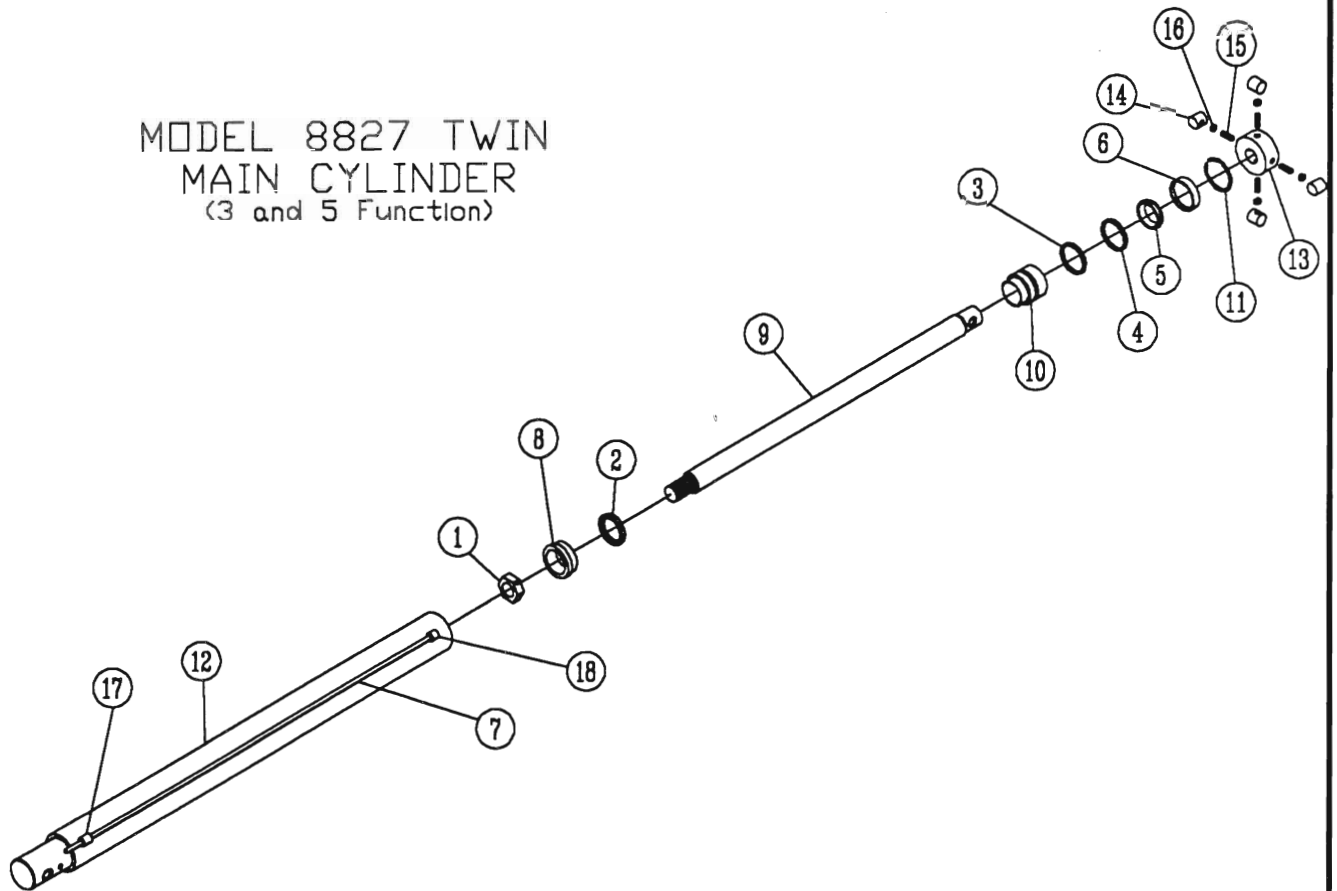


MODEL 8827 TWIN
CONTROL BOX
(3 and 5 Function)

Control Box Assembly (3 and 5 Function)

Ref. No.	Allen No.	Harrell No.	Description	No. Req'd.	
				3 Function	5 Function
1	A046170	79-073-88	Morse Terminal Eyes	3	5
2		79-118-88	Stacking Kit	6	6
3	40BDD038011	79-074-88	Morse Cable	3	5
4	A029104	79-075-88	Ball Joints	3	5
5	77117	96-026-88	Lever Pivot Shaft	1	
6	77118	96-025-88	Lever Pivot Shaft		1
7		1702-1200	Flat Washers 3/8" SAE	2	2
8		1412-1200	Hex Lock Nut 3/8UNC	2	2
9	77119	85-038-88	Control Box (3 Spool)	1	
10	77120	85-005-88	Control Box (5 Spool)		1
11	77121	96-018-88	Spacer	3	5
12	77122	96-017-88	Spacer	1	1
13	77123	98-046-88	Handle	2	4
14	77124	98-045-88	Handle	1	1
15	77125	93-072-88	Cover	1	
16	77126	93-045-88	Cover		1
17		1702-0800	Flat Washers 1/4" SAE	8	8
18		1412-0800	Hex Lock Nut 1/4UNC	8	8
19		2814-0804	Hex Bolt 1/4" x 1/2" NC	8	8
20	77130	84-018-88	Hydraulic Tube Ass'y. 1/2" x 92"	2	2
21	77137	93-071-88	Bottom Plate	1	
22	77138	93-041-88	Bottom Plate		1
23		79-012-88	Tubing Clamp 1/2"	15	21
24	77131	84-006-88	Complete Control Box Ass'y. (5 Spool) (inc. items 1&2, 4-22 ex. 5,9,15&21)		1
25	77133	84-007-88	Complete Control Box Ass'y. (3 Spool) (inc. items 1&2, 4-21 ex. 6,10&16)	1	
26		77-004-38	Female Swivel Run Tee	2	2
27		79-120-88	Swivel Connector	1	1
28		77-047-06	Male Connector	1	1
29		79-119-88	Hose Assembly 32" DAL - AR-18	1	1
30		79-066-38	Flow Control Valve	1	1
31		0832-0800	Hex Nut 1/4UNF	3	5

MODEL 8827 TWIN
 MAIN CYLINDER
 (3 and 5 Function)

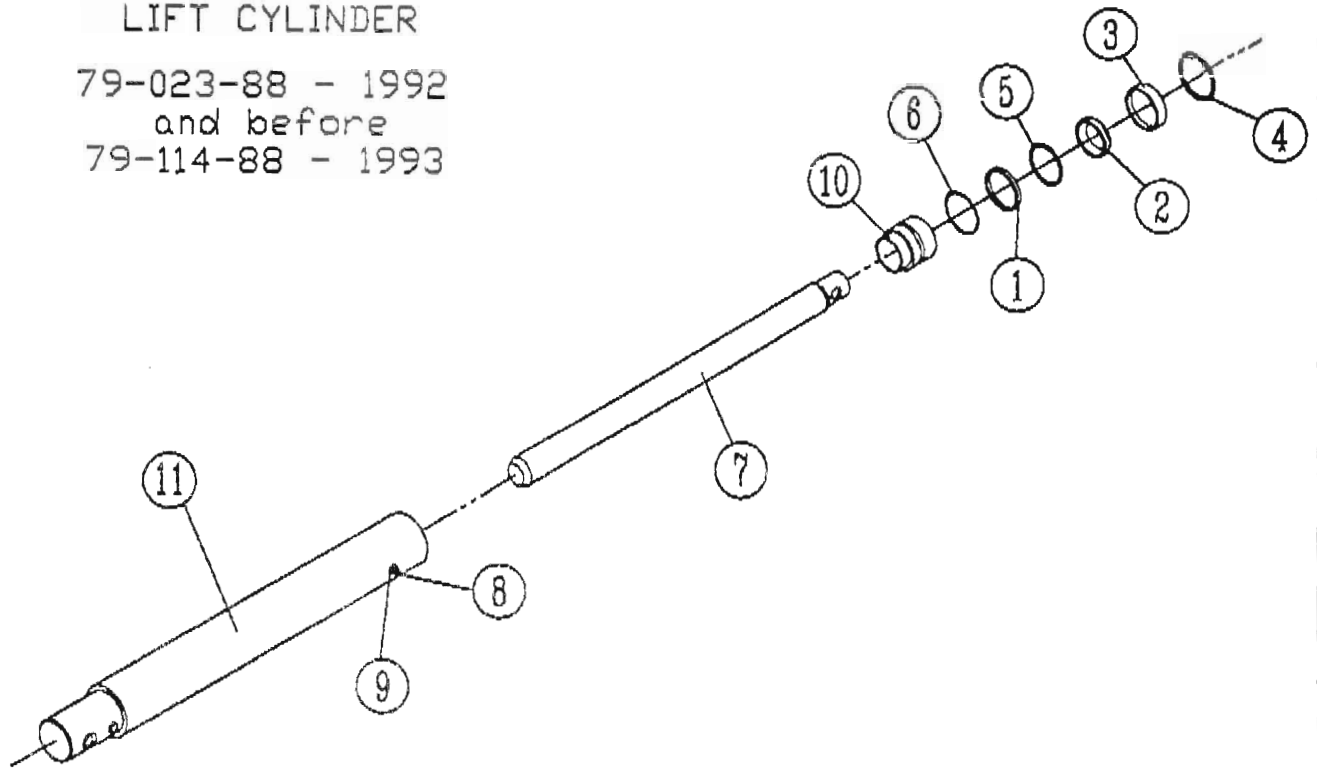


Ref. No.	Allen No.	Harrell No.	Description	No. Req'd.	
				3 Function	5 Function
1	81529	77-005-88	Lock Nut 7/8-14	1	1
2	81541	77-007-88	Piston Seal	1	1
3	81532	77-012-88	Static Seal	1	1
4	81531	77-011-88	Static Seal	1	1
5	81533	77-009-88	Rod Seal	1	1
6	81534	77-013-88	Rod Wiper	1	1
7	81546	77-003-88	Hydraulic Fluid Line	1	1
8	81540	77-006-88	Piston Head	1	1
9	81528	77-008-88	Piston Rod	1	1
10	82563	77-010-88	Piston Gland 97.40	1	1
11	81553	77-014-88	Snap Ring	1	1
12	81526	77-004-88	Cylinder Barrell	1	1
13	82562	77-015-88	Cylinder Cap	1	1
14	82103	79-006-88	Teflon Bushing	4	4
15	82104	79-011-88	All Thread Stud 1/2-13NC	4	4
16		1012-1600	Jam Nut 1/2-13NC	4	4
17		96-029-88	Tube Guide	1	1
18		96-030-88	By-Pass Coupling	1	1
19	81550	72-001-88	Seal Kit	1	1

Update 5-27-93
Per Joe

LIFT CYLINDER

79-023-88 - 1992
and before
79-114-88 - 1993



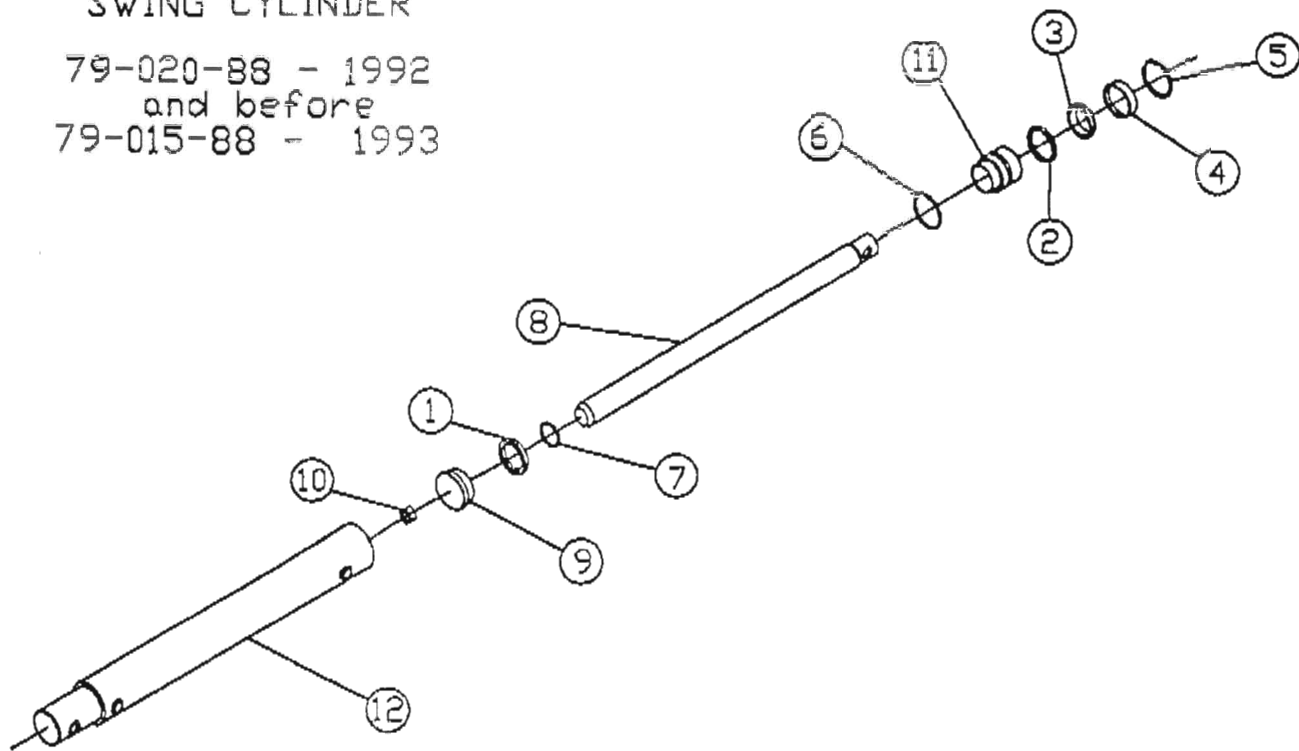
No. Req'd.

Ref. No.	Allen No.	Harrell No.	Description	3 Function	5 Function
1		77-031-88	Static Ring 1992 and before	1	1
1	81531	77-011-88	Back Up Washer 1993	1	1
2	87316	77-099-88	Rod Seal 1992 and before	1	1
2		77-039-88	U-Cup 1993	1	1
3	87317	77-100-88	Wiper 1992 and before	1	1
3		77-038-88	Wiper 1993	1	1
4	81553	77-014-88	Snap Ring (all)	1	1
5	81532	77-101-88	Backup 'O' Ring 1992 and before	1	1
5		77-012-88	Backup 'O' Ring 1993	1	1
6		77-031-88	O-Ring 1993	1	1
7	87301	77-036-88	Piston Rod 1992 and before	1	1
7		77-096-88	Piston Rod 1993	1	1
8	51554	77-016-88	5/16-18NC x 5/8 Long Stud	1	1
9		1412-1000	5/16-18NC Steel Lock Nut	1	1
10	87302	77-037-88	Piston Gland 1992 and before	1	1
10		77-097-88	Piston Gland 1993	1	1
11	87300	77-035-88	Cylinder Barrel 1992 and before	1	1
11		77-095-88	Butt and Tube Assy. 1993	1	1
N.S.	87315	72-003-88	Seal Kit 1992 and before (consist of items 1-5)	1	1
N.S.		72-010-88	Seal Kit 1993 (consist of items 1-6)	1	1

Update 5-27-93
 Per Joe

SWING CYLINDER

79-020-88 - 1992
 and before
 79-015-88 - 1993

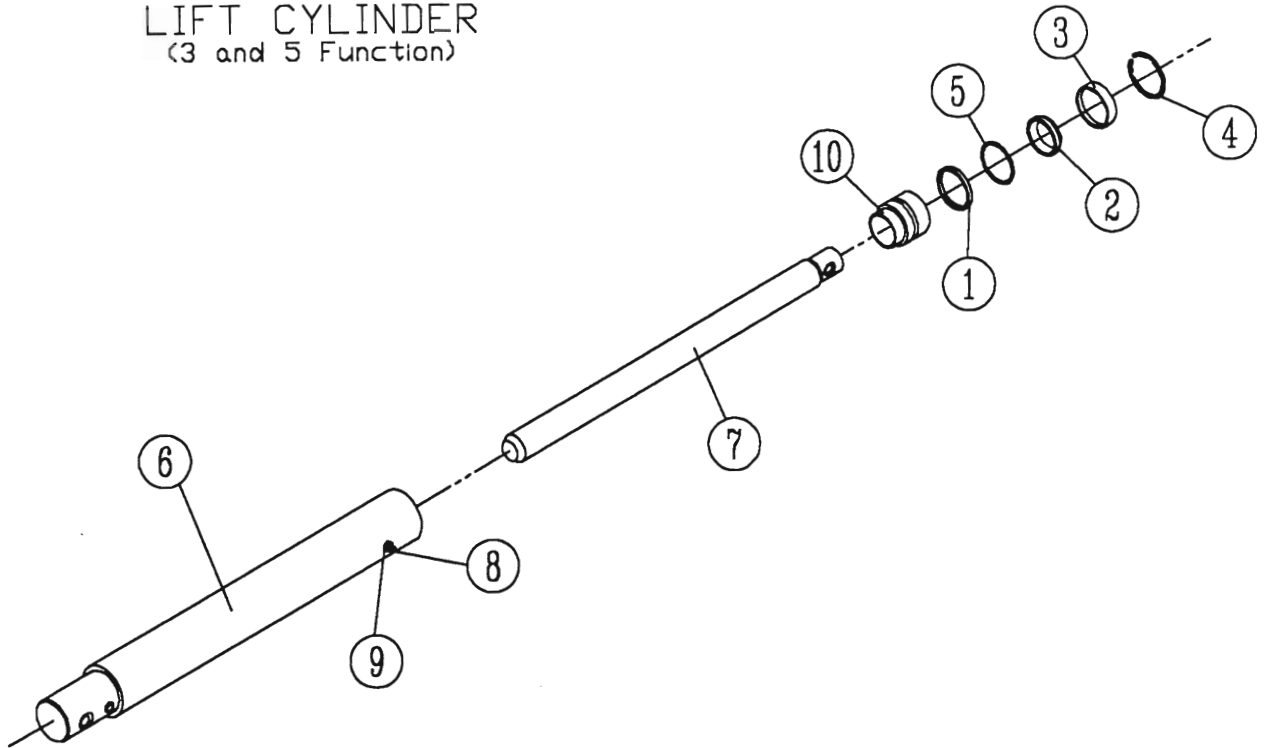


No. Req'd.

Ref. No.	Allen No.	Harrell No.	Description	3 Function	5 Function
1	81505	77-091-88	Piston Seal 1992 and before		2
1		77-028-88	Crown Seal 1993		2
2	81509	77-092-88	Static Seal 1992 and before		2
2		77-087-88	BU-Washer 1993		2
3	81510	77-093-88	Rod Seal 1992 and before		2
3		77-032-88	U-Cup 1993		2
4	81511	77-094-88	Wiper 1992 and before		2
4		77-033-88	Wiper 1993		2
5	81512	77-034-88	Snap Ring (all)		2
6		77-098-88	O-Ring		2
7		77-086-88	O-Ring		2
8	81503	77-029-88	Piston Shaft 1992 and before		2
8		77-089-88	Piston Shaft 1993		2
9		96-028-88	Plug Piston Stop		2
10		77-085-88	Locknut 5/8" 18 UNF 1993		2
11	81508	77-030-88	Piston Gland 1992 and before		2
11		77-090-88	Piston Gland 1993		2
12	81502	77-027-88	Cylinder Barrell 1992 and before		2
12		77-088-88	Cylinder Barrell 1993		2
N.S.	81551	72-002-88	Seal Kit, 1992 and before (consist of items 1-5)		2
N.S.		72-009-88	Seal Kit, 1993 (consist of items 1-7)		2

old numbers
extra pages

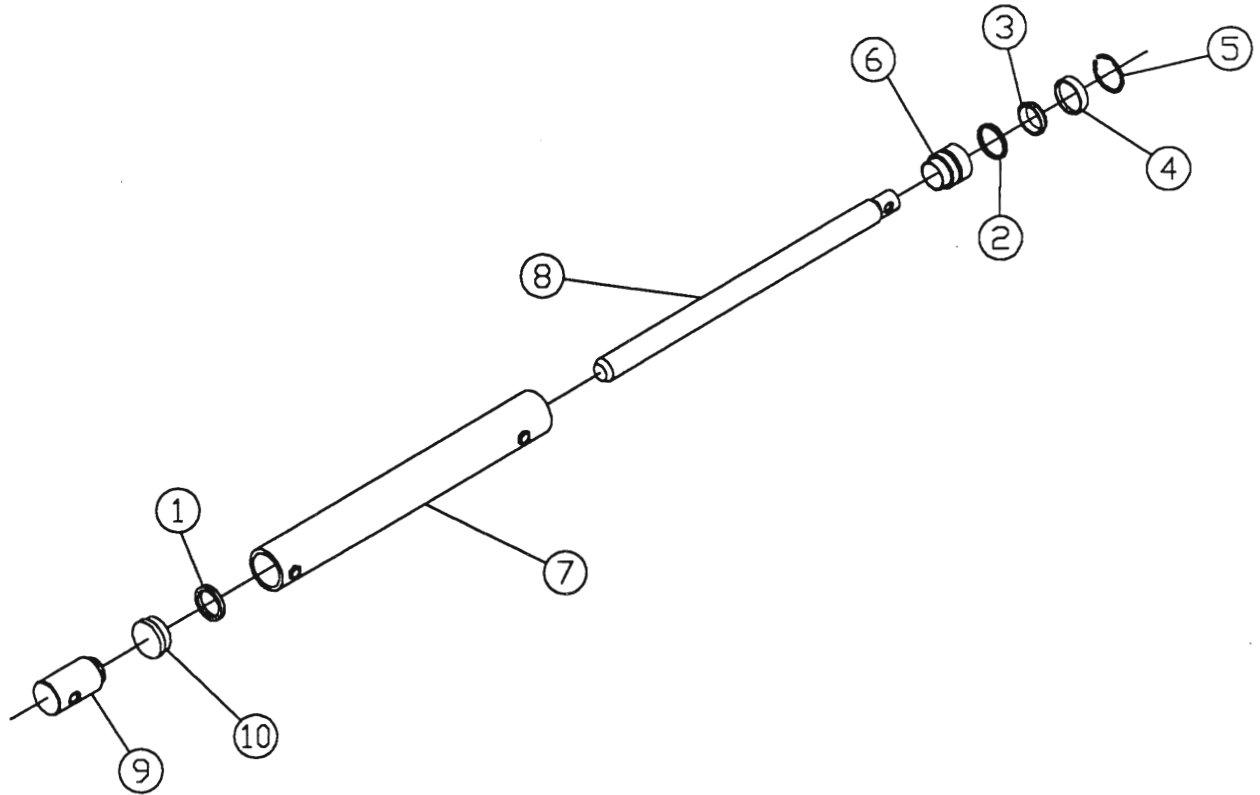
MODEL 8827 TWIN
LIFT CYLINDER
(3 and 5 Function)



No. Req'd.

Ref. No.	Allen No.	Harrell No.	Description	No. Req'd.	
				3 Function	5 Function
1	81531	77-031-88	Static Ring	1	1
2	87316	77-032-88	Rod Seal	1	1
3	87317	77-033-88	Wiper	1	1
4	81553	77-034-88	Snap Ring	1	1
5	81532	77-030-88	Backup "O" Ring	1	1
6	87300	77-027-88	Cylinder Barrell	1	1
7	87301	77-029-88	Piston Rod	1	1
8	51554	77-016-88	5/16-18NC x 5/8 Long Stud	1	1
9		1412-1000	5/16-18NC Steel Lock Nut	1	1
10	87302	77-037-88	Piston Gland	1	1
11	87315	72-003-88	Seal Kit	1	1

MODEL 8827 TWIN
 SWING CYLINDER
 (3 and 5 Function)



Ref. No.	Allen No.	Harrell No.	Description	No. Req'd.	
				3 Function	5 Function
1	81505	77-028-88	Piston Seal	1	1
2	81509	77-031-88	Static Seal	1	1
3	81510	77-032-88	Rod Seal	1	1
4	81511	77-033-88	Wiper	1	1
5	81512	77-034-88	Snap Ring	1	1
6	81508	77-030-88	Piston Gland	1	1
7	81502	77-027-88	Cylinder Barrell	1	1
8	81503	77-029-88	Piston Shaft	1	1
9		96-027-88	Barrell Butt	1	1
10		96-028-88	Plug Piston Stop	1	1
11	81551	72-002-88	Seal Kit	1	1

LMC

RETURNS AND CREDIT POLICY

SECTION 1-RETURNS

LMC will not accept any returns without a Return Authorization Number (RAN). These numbers may be obtained by calling our Sales or Parts Departments at LMC Donalsonville GA. (888) 459-9615. The item Number, Quantity and the Reason for Return must be given when a (RAN) is requested.

Any return must be accompanied with a copy of the invoice or it will be deemed unreturnable and no credit will be issued.

Returns handled in the following ways may result in items being returned to you and your account billed for freight charges:

1. No Return Authorization Number (RAN)
2. No copy of the Invoice attached.
3. Return of a Special Order item without prior verbal or written consent.

Returns handled properly may be credited subject to the following.

1. Standard Stock items returned may be subject to a 20% restocking fee.
2. Non-Stock items returned may be subject to a 30% restocking fee.
3. Special Order items returned may be subject to 50% restocking fee.
4. Items returned that are older than (6) six months past invoice date are subject to an extra 10% restocking charge.
5. No items will be accepted for returns that are older than (1) one year past invoice date.

SECTION II - CREDITS

LMC has implemented the following Credit Policy

1. Mis-Shipments-If reported 10 days of Ship Date, your invoice will be credited when the item has been returned properly.
2. Damaged Goods-If reported within 10 days of Ship Date, items will be replaced or repair parts will be shipped, a claim will be issued to the freight company.
3. Defective Goods-If reported within 10 days of Ship Date, items will be replaced or repaired at no cost to the customer when our vendor has determined the items defective.
4. Shipment Shortage-If reported within 10 days of Ship Date, the items will be sent pre-paid at no cost the customer.
5. Shipment Shortage/Preseason-If reported within 30 days of Ship Date, the items will be sent pre-paid or at no charge to the customer.
6. Price Discrepancies-If reported within 5 days of the receipt of invoice, the issue will be subject to review until all differences are reconciled
7. Overstock/Return Credit-See Section I (Returns)

LMC

WARRANTY REQUEST AND PROCEDURE

1. The Warranty Registration Card must be completely filled out by the retailing dealer or user, then mailed to LMC. This information is kept on file and referenced to by unit serial number and the date the unit was retailed.

This registration card must be on file before Warranty consideration can be given.

2. To file A Warranty Claim:

A: Call LMC at (800-332-8232) to obtain a Warranty Request Number. The parts department can issue this number. *Ask for Christi Cleveland*

B: Completely fill out a warranty request form and fax it or mail it to LMC P.O. Box 428, Donalsonville, GA. 39845 (Fax# 1-229-524-2531).

C: All Warranty Request Forms must be accompanied by pictures of failed parts. Pictures can be sent with form and or e-mailed to *(Christi.cleveland@lmcarter.com)*

D: Some parts will require inspection by our staff or vendors before warranty is Approved. Our parts department will advise if these parts need to be sent back or discarded.

E: Returned parts must be accompanied with a complete copy of the Warranty Claim.

3. Parts not manufactured by LMC Must be approved by our vendors before Warranty Credit is issued.

4. When warranty claim is approved, a credit memo will be issued and the customer account will be credited accordingly.

5. When warranty claim is denied, it will be sent back to dealer with an explanation.

6. Warranty applications will not be considered if:

-All request information is not supplied.

-The warranty request received is received more than 30 days after failure.

-LMC or our vendor's inspection indicates the machine or parts were operated with insufficient lubrication, were abused, or had improper maintenance.

-Parts needed for inspection not returned.

-Parts, when returned are not clearly tagged with RAN and part number.

Attn: ..

WARRANTY

LMC, as manufacturer, warrants its products against defective parts in workmanship and material, for a period of twelve consecutive months from the date of retail to the original purchaser, but does not warrant in any way other attachments or accessories manufactured by other companies which may be attached to and therefore becoming a part of the product manufactured and sold by **LMC**, such as other attachments and accessories are in general covered by the warranty or warranties of the company which manufactured them.

Under no circumstances will it cover any merchandise or components thereof, which, in the opinion of the company, has been subjected to misuse, unauthorized modifications, alterations, an accident or if repairs have been made with parts other than those obtained through **LMC**.

LMC in no way warrants engines, batteries, tires, electronics, or trade accessories since their respective manufacturer warrants these items separately.

Our obligations under this warranty shall be limited to repairing or replacing, free of charge to the original purchaser, any part that, in our judgement, shall show evidence of such defect, provided further that such part shall be returned within thirty (30) days from date of failure to **LMC**, routed through the dealer and distributor from whom the purchase was made, *transportation charges prepaid*.

This warranty shall not be interpreted to render **LMC** liable for injury or damages of any kind or nature to person or property. This warranty does not extend to the loss of crops, loss of production, loss because of delay in harvesting, or any expense or loss incurred for labor, substitute machinery, rental or for any other reason.

Except as set forth above, **LMC shall have no obligation or liability of any kind on account of any of its equipment and shall not be liable for special or consequential damages. LMC makes no other warranty, expresses or implied, and, specifically, LMC disclaims any implied warranty or merchantability or fitness for a particular purpose. Some states or provinces do not permit limitations or exclusions or implied warranties or incidental or consequential damages, so the limitations or exclusions in this warranty may not apply.**

This warranty is subject to any existing conditions of supply that may directly affect our ability to obtain materials or manufacture replacement parts.

LMC reserves the right to make improvements in design or changes in specifications at any time, without incurring any obligation to owners of units previously sold.

No one is authorized to alter, modify or enlarge this warranty nor the exclusion, limitations and reservations.

Lewis M. Carter Mfg. Co., Inc.
P.O. Box 428
Donalsonville, GA 39845

2003

ATTENTION WILL NOT BE CONSIDERED IF:

- 1. Warranty Registration Card is not on file
- 2. All requested information is not supplied
- 3. The Warranty Request is received more than 30 days after the date of failure

- 4. Inspection indicates machine was operated with insufficient lubrication or improper operation
- 5. Parts, when requested are not tagged with this RAN# and Part Number



WARRANTY REQUEST

WARRANTY REQUEST NO. _____

P.O. Box 428 Donaldsonville, GA 31745
229-524-2197 FAX 229-524-2531

REQUEST MUST BE SUBMITTED WITHIN 30 DAYS AFTER FAILURE

Dealer Name:			Customer Name:			Salesman:		
Address:			Address:			Dealer Account No		
Phone No.:			City:			Date Filed by Dealer:		
City:			State:			Zip:		
Machine Model No:			Qty			LMC Part No.		
Serial No.			Tractor Make:			Part Description		
Tractor Model:								
Tractor Horsepower:			Date Retained:					
Failure Date:			Date of Repair:					
Description of Failure/Reason for Credit								
DISPOSITION OF CLAIM:			Warranty Registration Card on File?			PART RETURN APPROVED:		
Claim Received: Date:			Yes			Return Circled Parts Via		
Claim Approved: Date:			No			By _____		
Claim Pending Return of Parts: Date:			Sales Rep Signature: Date:			DISPOSITION OF PARTS		
Claim Denied: Date:			Attach receipts for all outside purchases to the packing slip copy			Scrap In Field		
			BE ACCURATE:			Scrap at the Plant		
			Dealer Signature: Date:			Commission Code		
			IMPORTANT - Attach a copy of the LMC Invoice for all LMC parts used. (INCLUDE SHOP LABOR TICKET)			Labor Code		
			I CERTIFY THE INFORMATION IN THIS REQUEST TO BE ACCURATE:			TOTAL CREDIT SERVICE		
			Accounting Codes					
			Company No.					
			Accounting Code:					
			Product Code:					
			Labor Code:					
			Commission Code:					

WARRANTY REGISTRATION CARD

Dealer Name: _____

Customer Name: _____

Address: _____

Product: _____

Model Number: _____ Serial Number: _____

Date Delivered: _____

Did you receive the owner's manual? Yes _____ No _____

Did you receive a copy of warranty? Yes _____ No _____

WARRANTY IS VOID IF CARD IS NOT RETURNED

I have read and fully understand the contents of this manual and am familiar with the operation procedures of this product.

Customer Signature _____ Dealer Signature _____

CORRECT
POSTAGE
REQUIRED

Lewis M. Carter Mfg. Co. Inc.
P.O. Box 428
Donalsonville, GA 31745

Warranty Department

