

# LMC

Lewis M. Carter, Mfg.

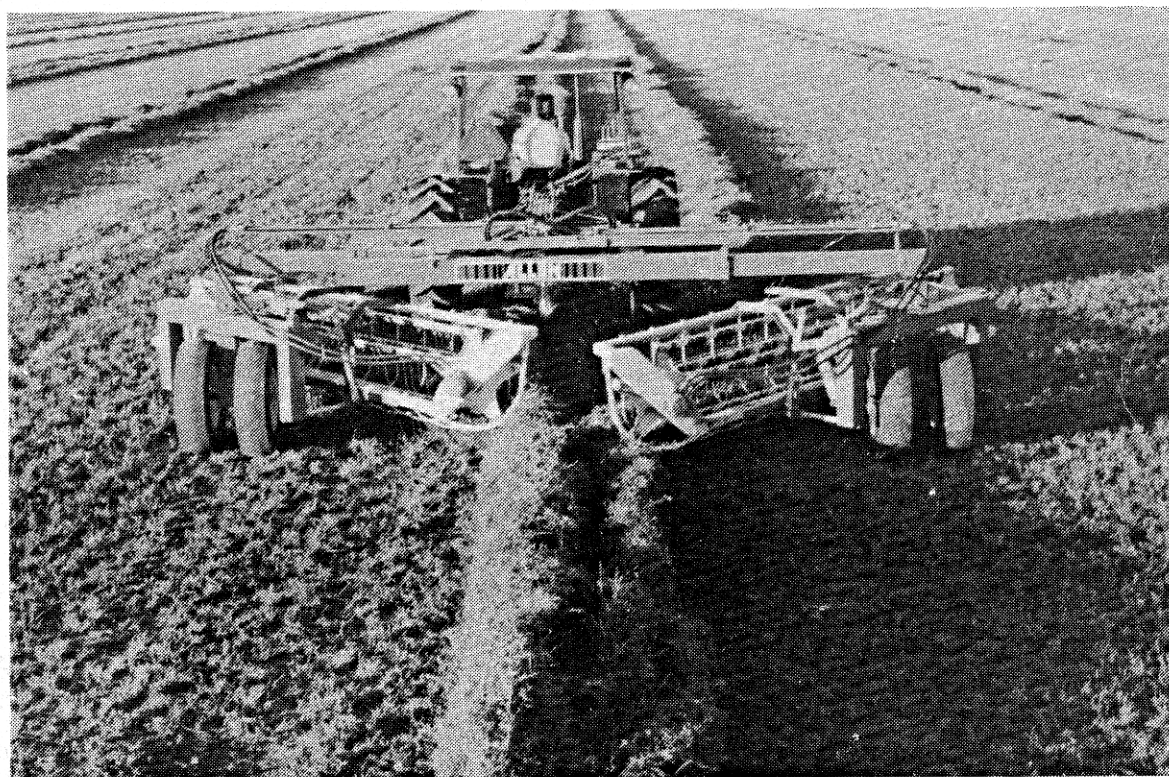
## ALLEN 8827 BASKET RAKE

QUALITY

SINCE 1954

SERVICE

"BUILT TO LAST EQUIPMENT"



## 8827 BASKET RAKE

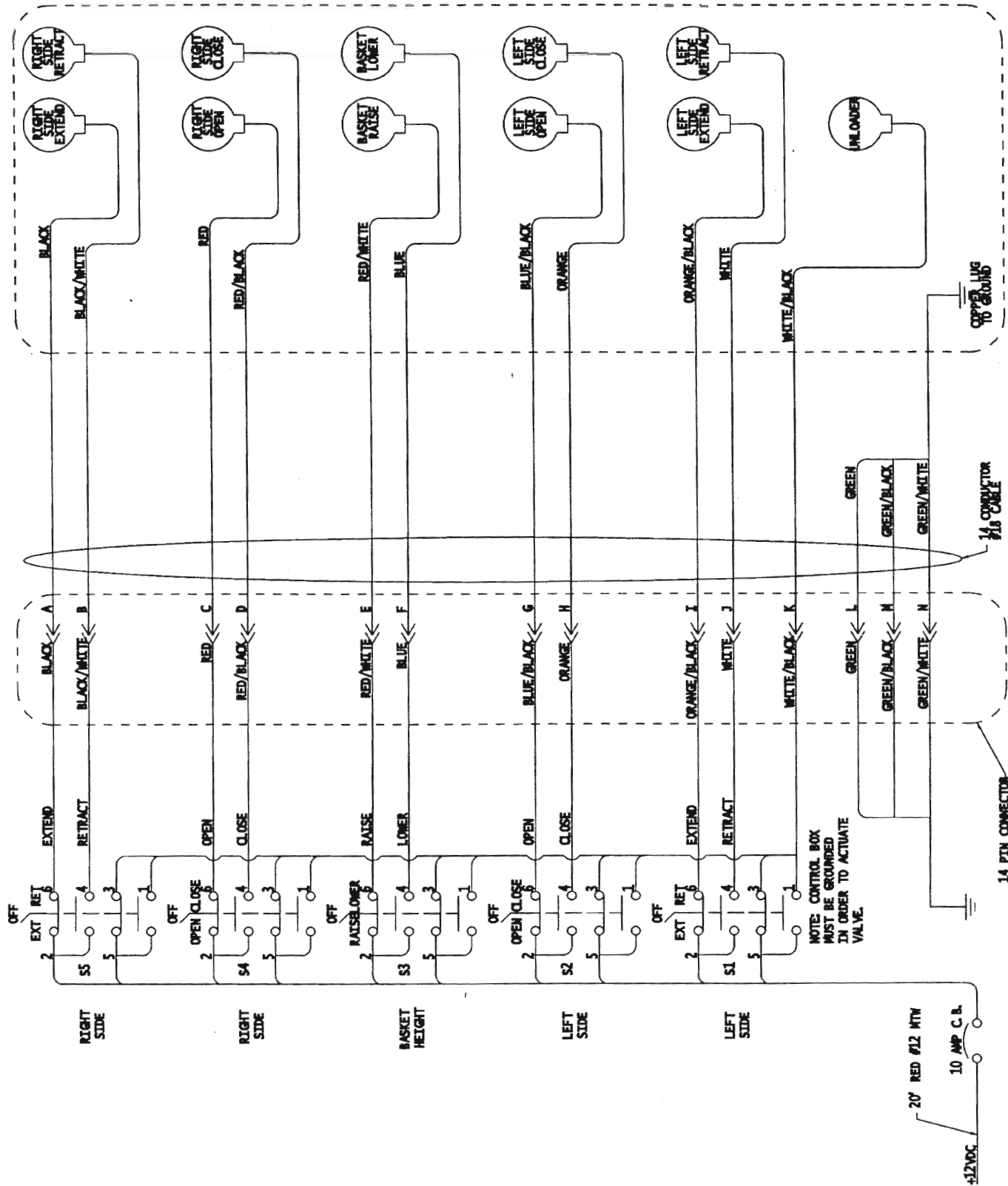
### OWNERS-OPERATOR / PARTS MANUAL

APRIL 2000

PLEASE PLACE ALL ORDERS FOR PARTS AND WHOLE GOODS  
THROUGH OUR NEVADA WAREHOUSE PHONE: 888-459-9615 FAX: 775-246-4512



# ELECTRIC VALVE WIRING DIAGRAM



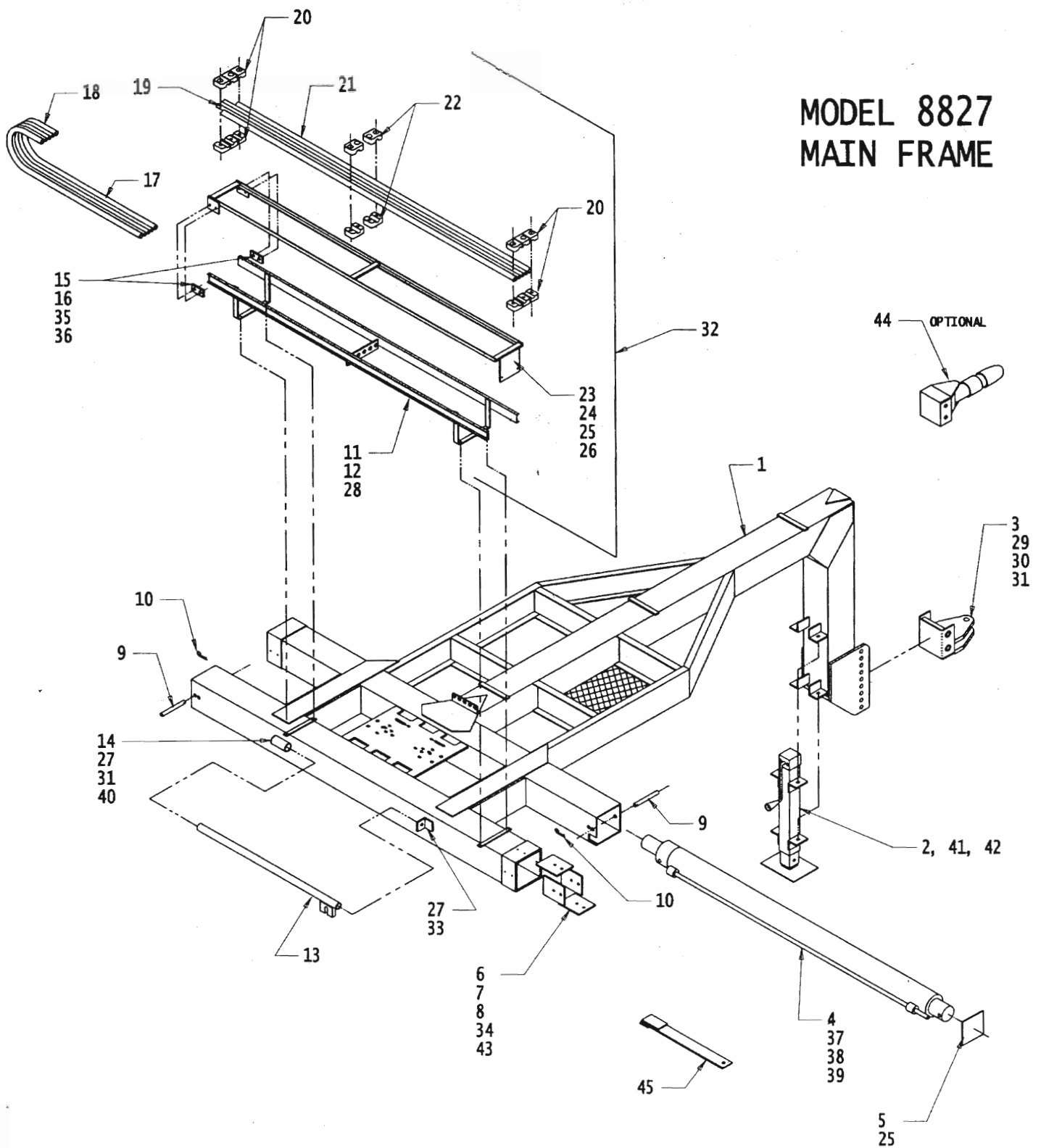
## BASKET RAKE TROUBLESHOOTING

PROBLEM	CAUSE	CORRECTION
Tine bar breaking in half	1. Basket running too fast.	1. Slow basket speed down so that it does not exceed 90 RPM.
Front basket idler spindle breaking.	1. Basket height set too low, tines are digging into the ground  2. Basket running too fast.	1. Adjust basket height so that tines do not touch the ground. Tines should be within ½" of the ground, but not actually in contact with the ground. 2. Slow basket speed down so that it does not exceed 90 RPM.
Star wheels idler spindle breaking	1. Loose tine bar head bolts. 2. Tine bar head bearing 3. Bearings too loose in tine 4. Basket speed too fast.	1. Tighten tine bar head bolts. 2. Replace tine bar head bearing. 3. Shim as needed with shim #77-054-88 4. Slow basket speed down so that it does not exceed 90 RPM.
Baskets fail to operate when hydraulic remote valve is opened.	1. Basket drive hub splines worn out. 2. Check valve #79-146-88 is in the open position.	1. Replace hub, using new bolt, lockwasher, and flatwasher. 2. Remove and clean the flow control valve or replace the valve with a new one.
Baskets rise during field operation.	1. System backpressure is excessive, because return oil flow is restricted.	Read the HYDRAULICS section of OWNERS MANUAL.
Rake function fails to operate.	1. Manual control cable out of adjustment. 2. Wire came off solenoid adjustment. (Electronic control valve only) 3. Solenoid defective. (Electronic control valve only) 4. Hydraulic motor or cylinder is bypassing hydraulic oil internally.	1. Adjust cable to take up slack.  2. Replace wire and tighten spade connector.  3. Replace solenoid.  4. Install new seal kit in defective part.

**LMC BASKET RAKE  
MODEL 8827**

PARTS LISTING	PAGE NO.
MAIN FRAME	96-97
EXTENSION ARMS	98-99
BASKET ADPATER, PIVOT ARM & SWING ARM	100-101
HUB & STAR ASSEMBLY	102-103
BASKET ASSEMBLY	104
HYDRAULIC SCHEMATIC	105-107
5-FUNCTION RAKE CONTROL VALVE PLUMBING	108-109
5-FUNCTION HYDRAULIC LINE ROUTING	110
FLOW CONTROL VALVE PLUMBING DIAGRAM	111
3-FUNCTION HYDRAULIC LINE ROUTING	112-113
ELECTRIC VALVE WIRING DIAGRAM	114
CONTROL BOX	115-116
EXTENSION CYLINDER	117
LIFT CYLINDER	118
SWING CYLINDER	119
GAUGE WHEEL	120-121

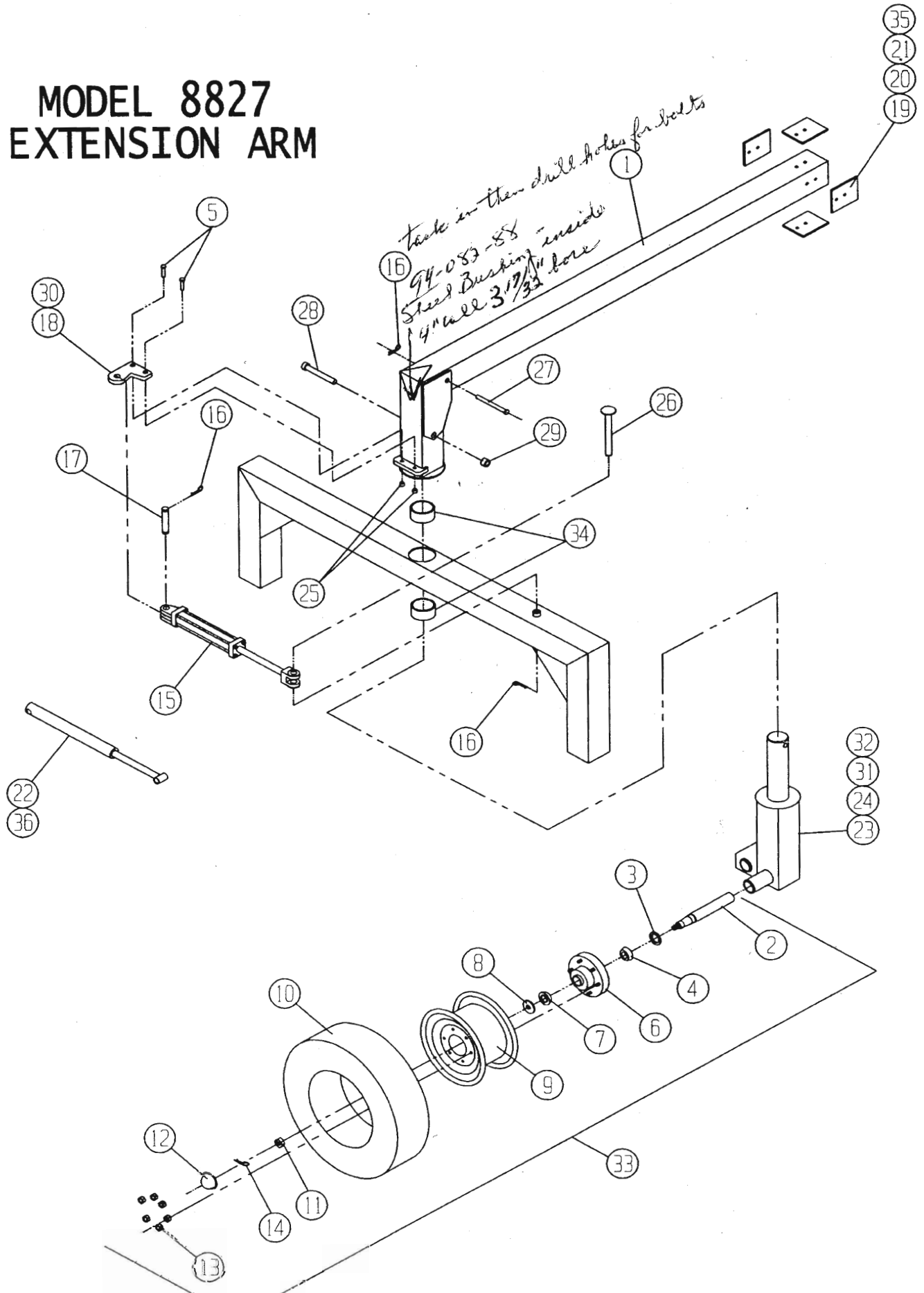
# MODEL 8827 MAIN FRAME



# MAIN FRAME ASSEMBLY

Ref. No.	LMC No.	Description	3 Function	5 Function
1	85-082-88	Main Frame	1	1
2	85-077-88	Jack Stand	1	1
3	85-074-88	Hitch, 1995	1	1
4	79-113-88	Telescoping Cylinder	2	2
5	93-018-88	End Cap	2	2
6	79-153-88	Poly Slide Bearing	8	8
7	2814-1014	Cap Screws 5/16" UNC x 1-1/2"	16	16
8	0812-1000	Hex Nut 5/16" UNC	32	32
9	79-086-88	Clevis Pin 3/4" x 6-1/2"	2	2
10	79-128-88	Hair Pin Clip	2	2
11	85-009-88	Guide Rail Extension	2	2
12	2814-0810	Cap Screws 1/4" UNC x 1"	8	8
13	85-014-85	Hickey Bar	1	1
14	2816-1630	Hex Head Bolt 1" UNC x 3"	1	1
15	79-001-88	Poly Slide Bearing	4	4
16	3114-0810	Flat Head Screws 1/4" UNC x 1" UNC	8	8
17	79-041-88	Hose Assy 51" OAL - AR-17	2	6
18	79-015-88	Hose Assy 51" OAL - AR-7	4	4
19	84-021-88	Tubing 3/8" x 75 1/2"	2	6
20	77-071-88	3/8" Tubing Clamp, Half	12	36
21	84-022-88	Tubing 1/2" x 75 1/2"	4	4
22	77-072-88	1/2" Tubing Clamp, Half	12	12
23	85-028-88	Tubing Rack	2	2
24	2814-0804	Cap Screws 1/4" UNC x 1-1/2"	4	4
25	1702-0800	Flat Washers 1/4"	8	8
26	2814-0806	Cap Screws 1/4" UNC x 3/4" UNC	4	4
27	1412-1600	Hex Lock Nut 1/2" UNC	1	1
28	1412-0800	Hex Lock Nut 1/4" UNC	15	15
29	2816-2480	Hex Head Bolt 3/4" UNC x 8"	2	2
30	1412-2400	Hex Lock Nut 3/4" UNC	2	2
31	1702-1600	Flat Washer 1/2" SAE	2	2
32	84-002-88	Rack Assy (includes 11,12,15-25, 28)	2	2
33	2816-1610	Hex Head Bolt 1/2" UNC x 1"	1	1
34	93-097-88	Bearing Plate Shim	8	8
35	0812-0800	Hex Nut 1/4" UNC	8	8
36	1602-0800	Lock Washer 1/4" SAE	8	8
37	79-006-88	Teflon Bushing	8	8
38	79-011-88	Stud 1/2"-13 UNC	8	8
39	1012-1600	Hex Jam Nut 1/2"-13 UNC	8	8
40	79-032-85	Spring	1	1
41	2816-1210	Hex Bolt 3/8" UNC x 1" Gr. 5	4	4
42	1412-1200	Hex Lock Nut 3/8" UNC	4	4
43	93-108-88	Half Shim	As Req.	As Req.
44	85-078-88	Ball Hitch	1	1
45	85-139-88	Shim Driver Tool	1	1

# MODEL 8827 EXTENSION ARM



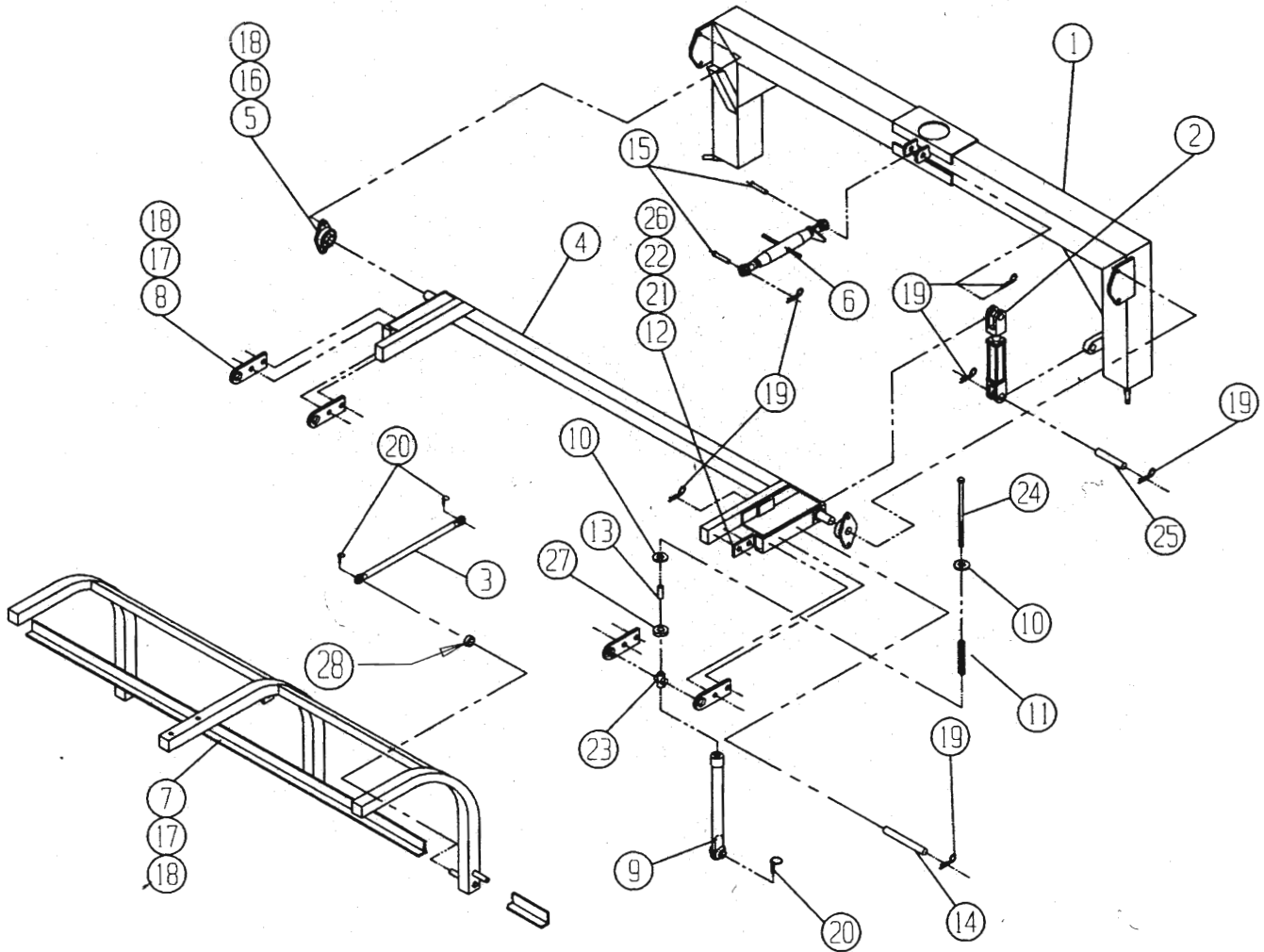


## EXTENSION ARM ASSEMBLY

No. Req'd.

Ref. No.	LMC No.	Description	No. Req'd.	
			3 Function	5 Function
1	85-118-87	Extension Arm	2	2
2	96-034-88	Spindle Shaft	4	4
3	77-006-02	Seal	4	4
4	77-007-02	Inner Bearing	4	4
5	2816-1620	Hex Head Bolt 1/2" UNC x 2"	4	4
6	77-001-02	Hub With Cups	4	4
7	77-008-02	Outer Bearing	4	4
8	77-005-02	Spindle Washer	4	4
9	79-017-88	6 Hole Wheel	4	4
10	79-018-88	Tire	4	4
11	77-004-02	Spindle Nut	4	4
12	77-012-02	Hub Cap	4	4
13	77-013-02	Lug Bolts - 1/2-20 UNF	24	24
14	77-011-02	Cotter Pin	4	4
15	79-158-88	Swing Cylinder		2
16	79-128-88	Hair Pin Clip	8	8
17	77-003-85	Clevis Pin		2
18	93-107-88	Swing Cylinder Lug	2	2
19	79-153-88	Poly Slide Bearing	8	8
20	2814-1006	Cap Screw 5/16 UNC x 3/4"	16	16
21	0812-1000	Hex Nut 5/16 UNC	16	16
22	84-062-88	Telescoping Link	2	
23	85-129-88	Right Hand Lower Axle	1	1
24	85-130-88	Left Hand Lower Axle	1	1
25	1412-1600	Hex Lock Nut 1/2 UNC	4	4
<del>25</del> 26	85-071-88	Swing Arm Pin	2	2
27	79-087-88	Pin, 3/4" x 6"	2	2
28	2816-2864	Hex Head Bolt 7/8 UNC x 6 1/2"	2	2
29	1412-2800	Hex Lock Nut 7/8 UNC	2	2
30	79-190-88	Hardening Bushing	4	4
31	2816-1234	Hex Head Bolt 3/8 UNC x 3 1/2"	4	4
32	1412-1200	Hex Lock Nut 3/8 UNC	4	4
33	79-001-02	Hub Assy (Includes #2-14, except 9 & 10 with spindle)	4	4
34	94-013-88	Bronze Bushing	4	4
35	93-097-88	Shim	8	8
36	79-010-38	Snap Ring Pin	1	

# MODEL 8827 BASKET ADAPTER, PIVOT ARM & SWING ARM

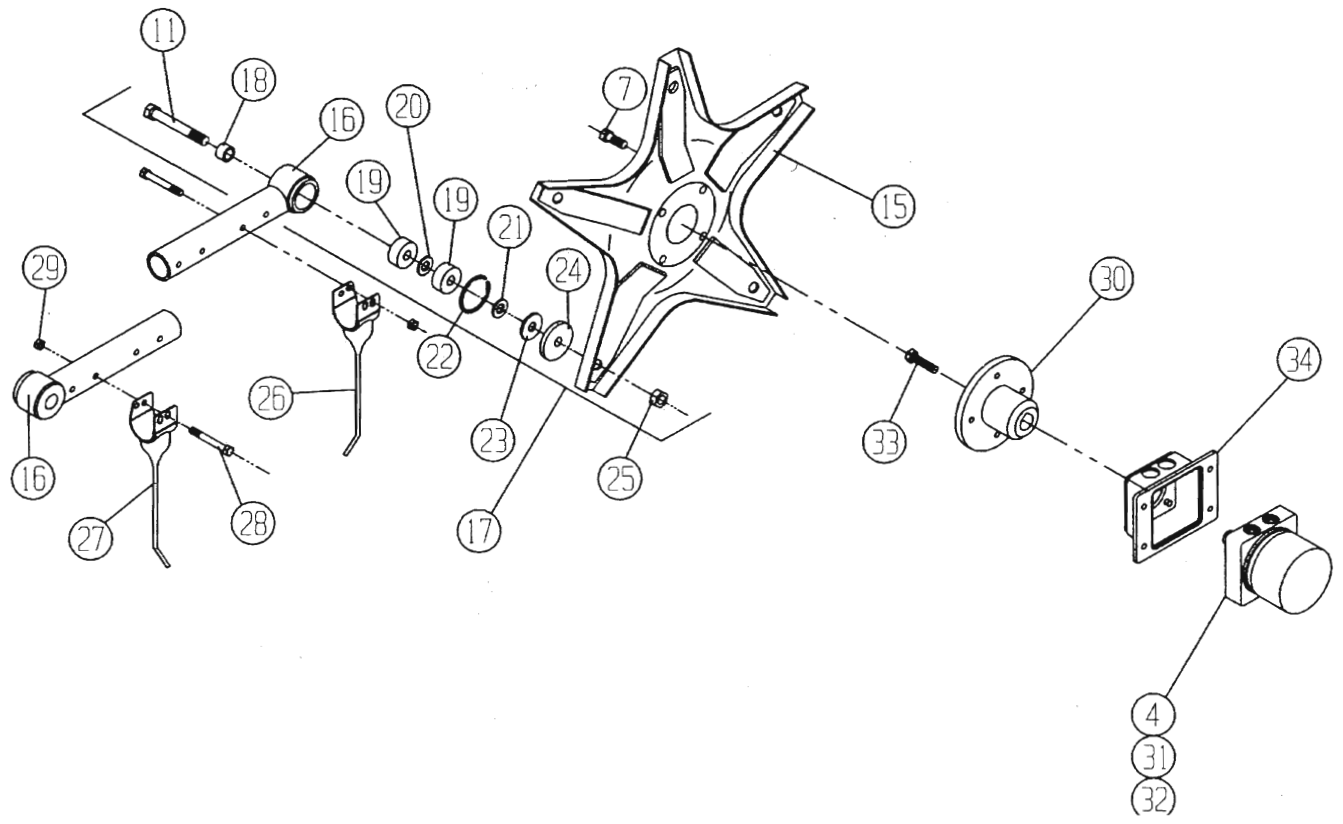
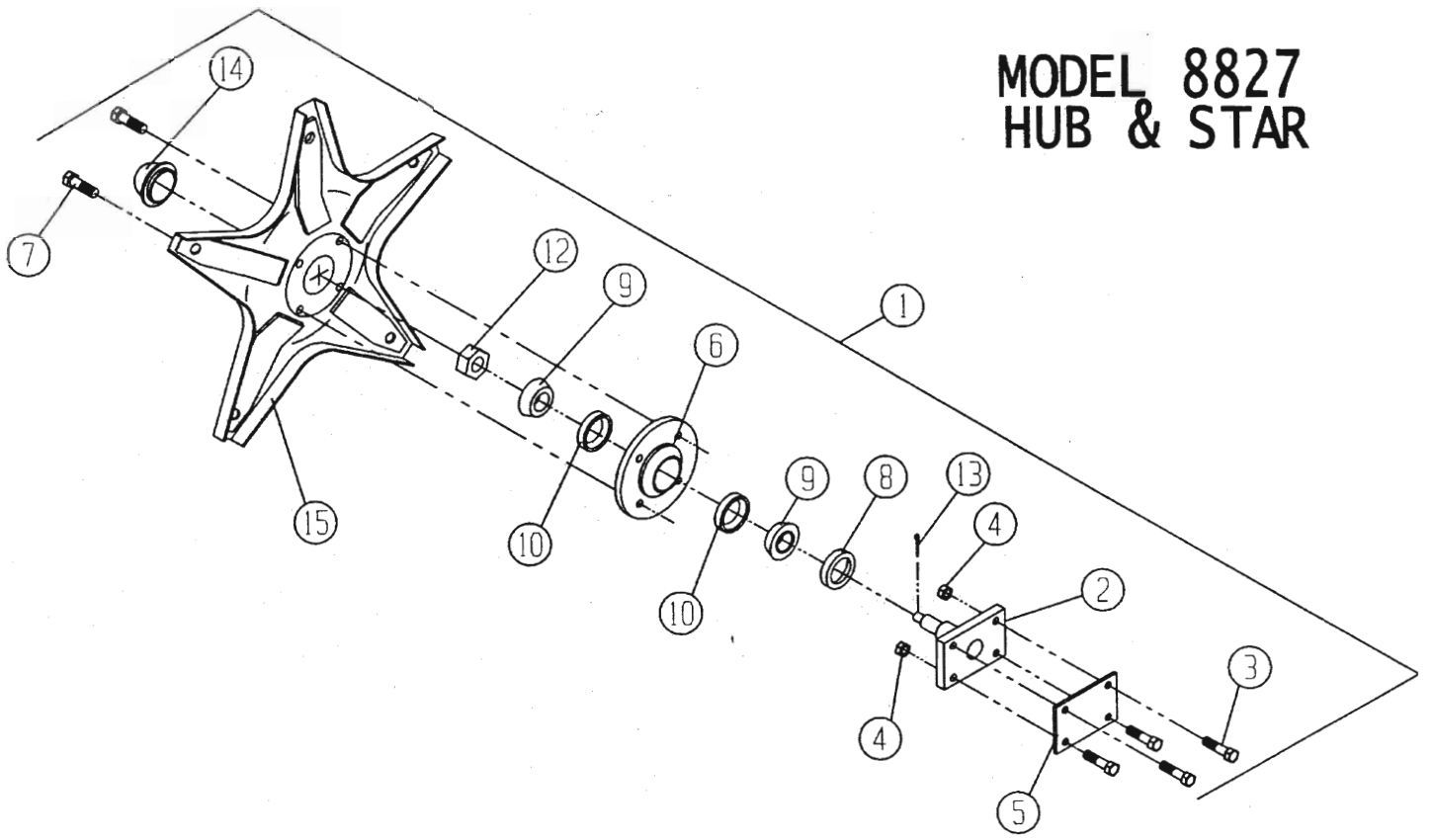


## BASKET ADAPTER, PIVOT ARM & LIFT ARM ASSEMBLY

No. Req'd

Ref. No.	LMC No.	Description	3 Function	5 Function
1	85-125-88	Swing Arm	2	2
2	79-170-88	Basket Lift Cylinder	2	2
3	85-128-88	Basket Standoff	4	4
4	85-123-88	Basket Pivot Arm	2	2
5	79-025-88	Two Bolt Flange Bearing	4	4
6	79-022-88	Angle Adjusting Arm	2	2
7	85-096-88	Basket Adapter	2	2
8	98-039-88	Guide Mount	8	8
9	85-138-88	Ground Pressure Adjusting Arm	4	4
10	79-126-88	Flat Washer, 3/4" Narrow	4	4
11	79-028-88	Flotation Spring, Standard Prior to 1999	4	4
	79-204-88	Flotation Spring, Heavy, 1999 & up	4	4
12	79-002-88	Poly Slide Bearing	4	4
13	77-066-88	UHMW Bushing	4	4
14	96-051-88	Lift Cylinder Pin, 1998 & up	2	2
15	79-081-88	Clevis Pin, 3/4" x 3"	4	4
16	2816-1620	Cap Screw, 1/2 UNC x 2"	8	8
17	2816-1630	Cap Screw, 1/2 UNC x 3"	16	16
18	1412-1600	Hex Lock Nut, 1/2 UNC	24	24
19	77-015-04	Cotter Pin	12	12
20	79-045-06	Lynch Pin	12	12
21	0315-1420	Plow Bolt, 7/16 UNC x 2"	8	8
22	0812-1400	Hex Lock Nut 7/16 UNC	8	8
23	95-001-88	Bolt Guide	4	4
24	2816-24170	Hex Head Bolt, 3/4 UNC x 17"	4	4
25	79-006-06	Clevis Pin	2	2
25	1602-1400	Lock Washer 7/16"	8	8
27	1012-2400	Hex Jam Nut, 3/4 UNC	4	4
28	94-084-88	Spacer Bushing(used between #9 & #7)	4	4

# MODEL 8827 HUB & STAR

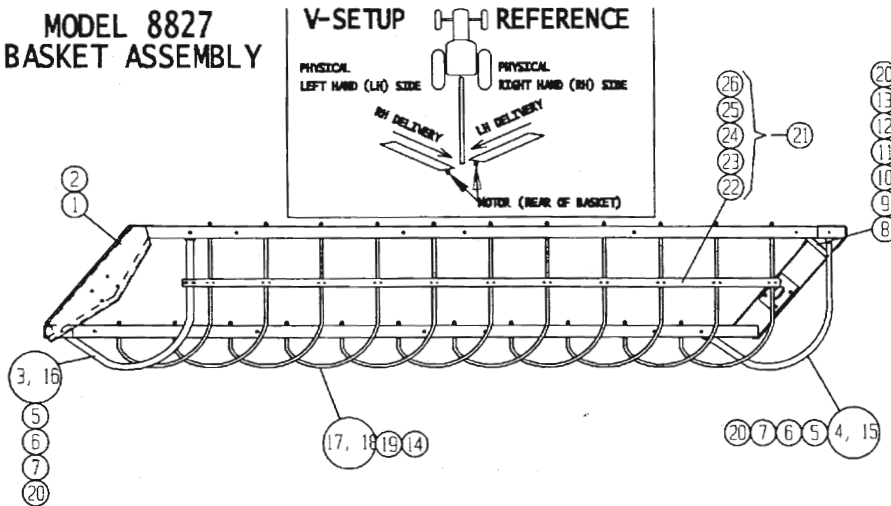


# HUB & STAR ASSEMBLY

No. Req'd.

Ref. No.	LMC No.	Description	No. Req'd.	
			3 Function	5 Function
1	84-061-88	Hub Assy (Inc. items 2, 6-14)	2	2
2	85-075-88	Hub Spindle	2	2
3	2816-1620	Cap Screws 1/2 UNC x 2"	8	8
4	1412-1600	Hex Lock Nut 1/2 UNC	16	16
5	98-035-88	Hub Backing Plate	2	2
6	77-012-87	Hub	2	2
7	77-009-36	Hub Bolt	16	16
8	77-006-87	Seal	2	2
9	77-045-88	Bearing	4	4
10	77-005-87	Race (pressed in hub)	4	
11	2836-2434	Head Head Bolt 3/4 UNF x 3 1/2"	20	20
12	77-001-87	Spindle Nut	2	2
13	77-049-88	Cotter Pin 1/8" x 2"	2	2
14	77-007-87	Dust Cap	2	2
15	85-031-88	Star	4	4
16	85-032-88	Tine Bar (Without Bearings)	10	10
	84-010-88	Tine Bar (With Bearings)	10	10
17	84-005-88	Bearing & Bolt Assy (Items 11, 18-25)	20	20
18	94-021-88	Bushing	20	20
19	77-052-88	Sealed Roller Bearing	40	40
20	77-054-88	Shim	20	20
21	77-064-88	Spacer	20	20
22	77-055-88	Snap Ring	20	20
23	77-067-88	Heavy Washer	20	20
24	77-056-88	Shield	20	20
25	1432-2400	3/4 UNF Stover Lock Nut	20	20
26	79-109-88	Tine, R.H.	220	220
27	79-110-88	Tine, L.H.	220	220
28	2816-1224	Hex Head Bolt, 3/8" UNC x 2-1/2"	220	220
29	1412-1200	Hex Lock Nut, 3/8" UNC	220	220
30	85-141-88	Hub, 1 1/4" Offset	2	2
31	79-032-88	Straight Shaft Motor	2	2
32*	2816-1624	Hex Head Bolt, 1/2 UNC x 2-1/2" Gr. 5	8	8
33	2836-2012	Hex Head Bolt, 5/8"-18 x 1-1/4"	2	2
34	85-144-88	Motor Mount, 1 1/4"	2	2
N.S.	79-033-88	Motor, Heavy Duty	Optional	Optional
N.S.	72-007-88	White Motor Seal Kit	1	1
N.S.	79-038-88	White Motor Thrust Bearing	1	1

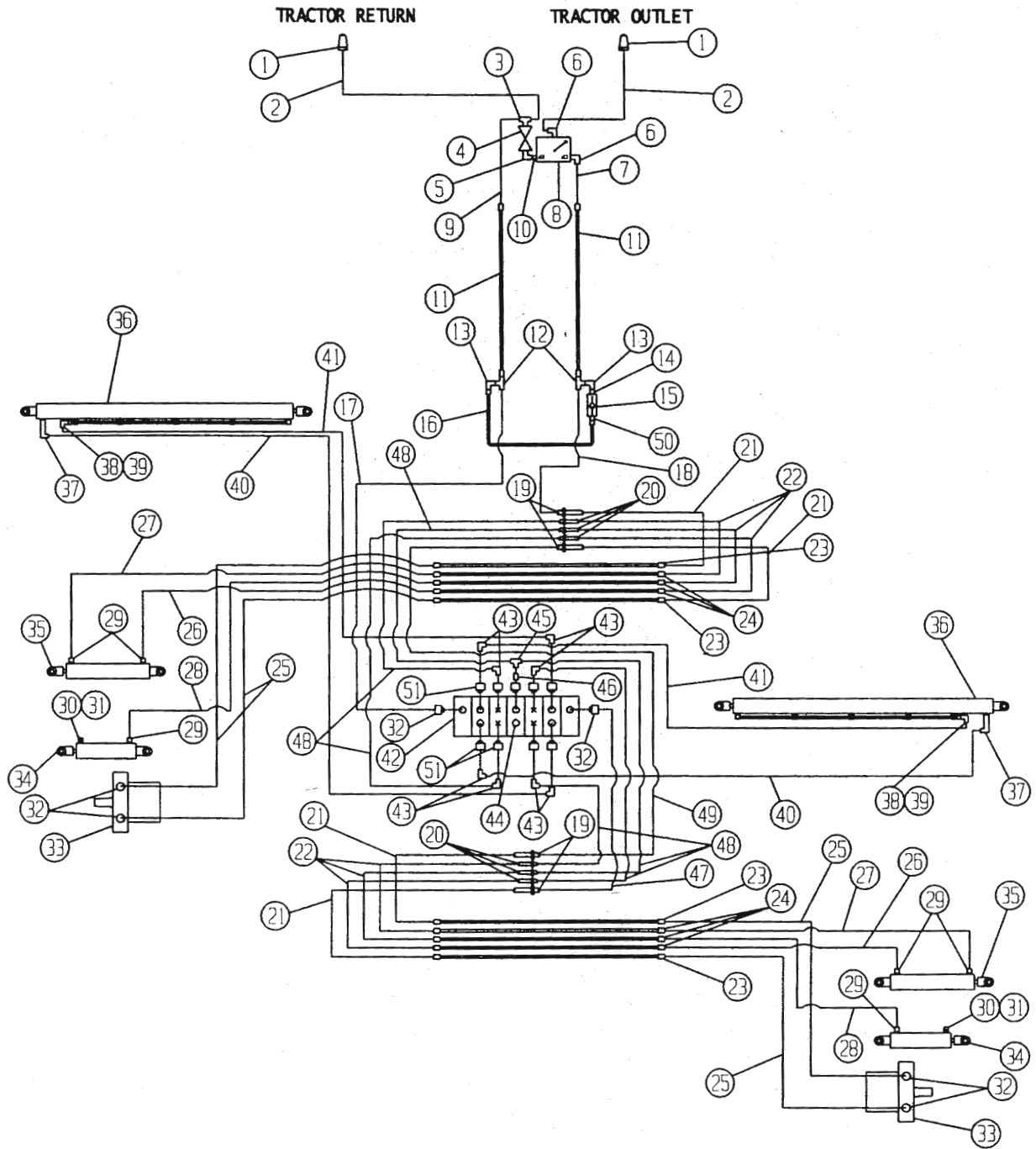
**MODEL 8827  
BASKET ASSEMBLY**



Ref. No.	LMC No.	Description	Qty. Req'd
1	85-035-88	Basket Frame, LH Delivery (RH side on V Setup)	1
2	85-034-88	Basket Frame, RH Delivery (LH side on V-Setup)	1
3	92-005-88	Front Guard, RH Delivery Basket (LH side on V-Setup)	1
4	92-009-88	Rear Guard, RH Delivery Basket (LH side on V-Setup)	1
5	2816-1620	Hex Bolt 1/2 UNC x 2"	4
6	1702-1600	Flat Washer 1/2" SAE (Include 4 for shims)	8
7	1412-1600	Flat Washer 1/2" SAE	4
8	98-067-88	Guard Brace, RH Delivery (LH side on V-Setup)	1
9	98-066-88	Guard Brace, LH Delivery (RH side on V-Setup)	1
10	0516-1220	Carriage Bolt 3/8 UNC x 2"	1
11	2816-1214	Hex Bolt 3/8 UNC x 2"	1
12	1702-1200	Flat Washer 3/8" SAE (Include 3 for shims)	5
13	1412-1200	Hex Lock Nut 3/8 UNC	2
14	1702-2000	Flat Washer 5/8"	22
15	92-008-88	Rear Guard, LH Delivery Basket (RH side on V-Setup)	1
16	92-006-88	Front Guard, LH Delivery Basket (RH side on V-Setup)	1
17	96-021-88	Stripper Bar, LH Delivery Basket (RH side on V-Setup)	11
18	96-023-88	Stripper Bar, RH Delivery Basket (LH side on V-Setup)	11
19	1412-2000	Hex Lock Nut 5/8 UNC	22
20	94-021-88	Spacer Bushing	5
21	72-004-88	Stripper Bar Support Group (includes items 22-26)	1
22	93-035-88	Stripper Reinforcing Bar	1
23	79-076-88	"U" Bolt (large)	1
24	79-077-88	"U" Bolt (small)	11
25	1412-1000	Lock Nut 5/16" NC	2
26	1412-0800	Hex Lock Nut 1/4 UNC	22

Per Basket

# MODEL 8827 5-FUNCTION RAKE HYDRAULIC SCHEMATIC



## HYDRAULIC SCHEMATIC

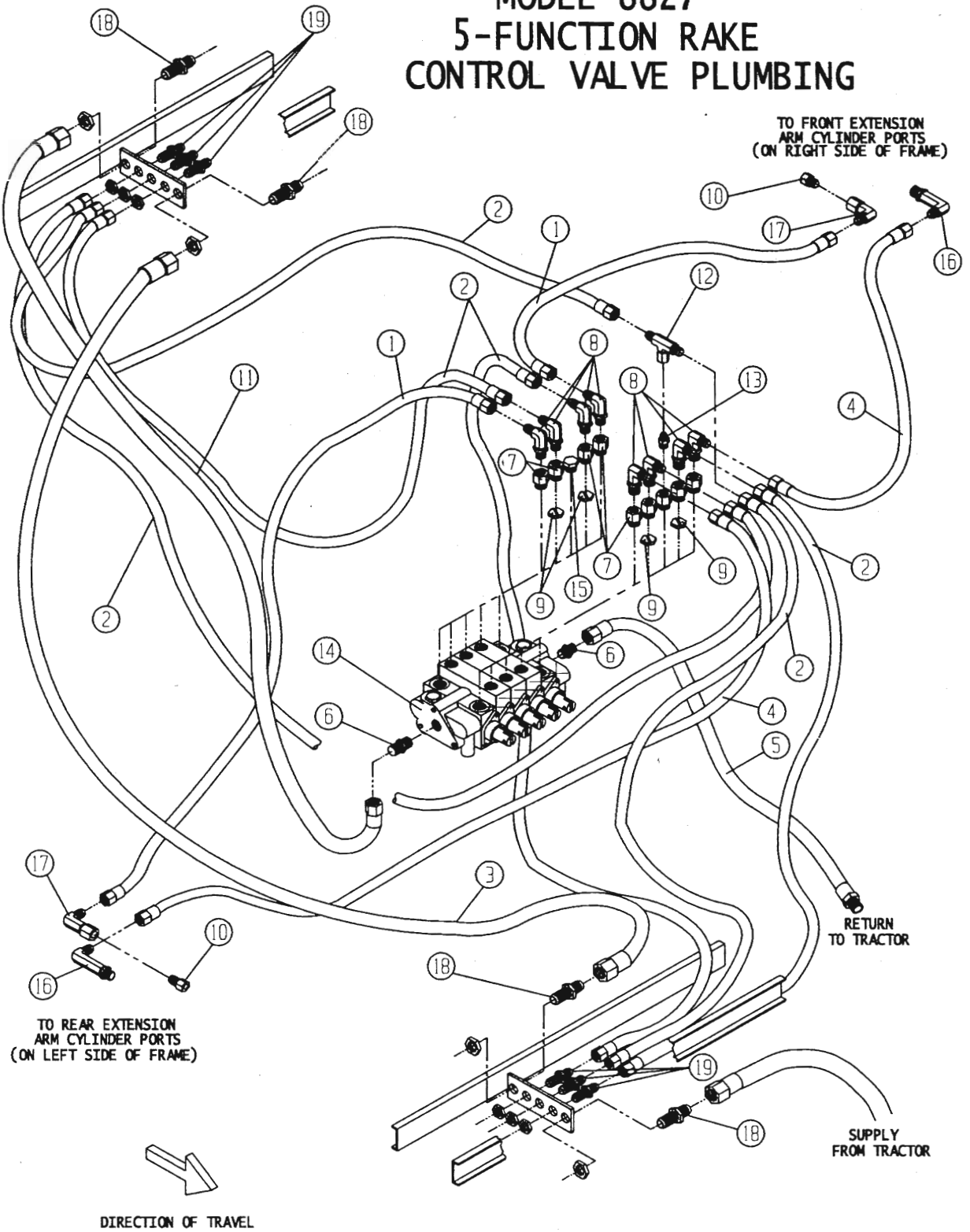
Ref. No.	LMC No.	Description	Qty. Req'd
1	79-212-36	Adapter, Quick Disconnect	2
2	79-068-88	Hose Assembly	2
3	79-112-88	Male Run Tee	1
4	79-072-88	Ball Valve	1
5	79-069-88	Elbow, 90°	1
6	79-070-88	Male Elbow, 90°	2
7	79-066-88	Hose Assembly	1
8	79-042-88	Flow Control Valve	1
9	79-071-88	Hose Assembly	1
10	79-068-38	Nipple	1
11	84-018-88	Hydraulic Tube Assembly	2
12	77-004-38	Female Swivel Run Tee	2
13	77-058-06	Swivel Nut Elbow, 90°	2
14	79-120-88	Swivel Connector	1
15	79-146-88	Check Valve	1
16	84-029-88	Excess Flow Tube	1
17	79-102-88	Hose Assembly	1
18	79-049-88	Hose Assembly	
19	79-083-88	Bulkhead Fitting	4
20	79-013-88	Bulkhead Fitting	6
21	79-015-88	Hose Assembly	2
22	79-041-88	Hose Assembly	1
23	84-022-88	Hydraulic Tube Assembly	4
24	84-021-88	Hydraulic Tube Assembly	6
25	79-061-88	Hose Assembly	4
26	79-065-88	Hose Assembly	2
27	79-064-88	Hose Assembly	2
28	79-167-88	Hose Assembly	2
29	79-169-88	Straight Thread Connector	4
30	79-171-88	Breather, Lift Cylinder	2
31	79-178-88	Pipe Adapter	2
32	79-131-88	Male Connector	6
33	79-200-88	Basket Drive Motor	2
34	79-170-88	Lift Cylinder	2
35	79-158-88	Swing Cylinder	2
36	79-113-88	Telescope Cylinder	2
37	79-009-88	Elbow, 90°	2
38	79-125-88	Straight Thread Adapter	2
39	79-097-88	Swivel Nut Elbow	2
40	79-145-88	Hose Assembly	2
41	79-144-88	Hose Assembly	2
42	79-193-88	Brand 5-Fnction Control Valve	1
43	79-052-88	Straight Thread Elbow	8
44	79-029-85	Straight Thread Plug	1



## HYDRAULIC SCHEMATIC

Ref. No.	LMC No.	Description	Qty. Req'd
45	79-099-88	Swivel Branch Tee	1
46	79-121-88	Straight Thread Adapter	1
47	79-055-88	Hose Assembly	1
48	79-101-88	Hose Assembly	6
49	79-046-88	Hose Assembly	1
50	77-047-06	Male Connector	1
51	79-054-88	Straight Thread Adapter	9
NS	77-058-88	Restrictor	4

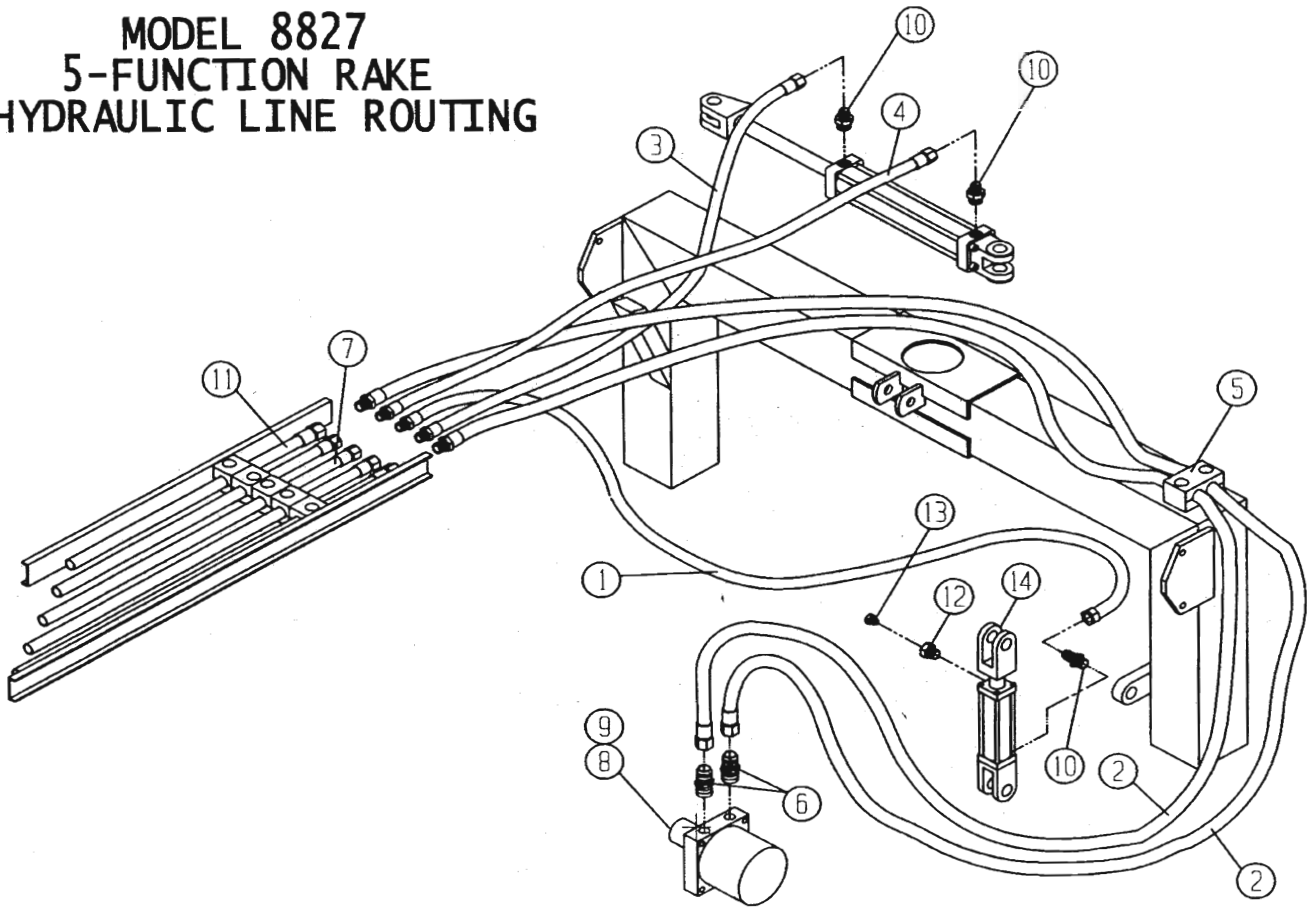
# MODEL 8827 5-FUNCTION RAKE CONTROL VALVE PLUMBING



## 5-FUNCTION RAKE CONTROL VALVE PLUMBING

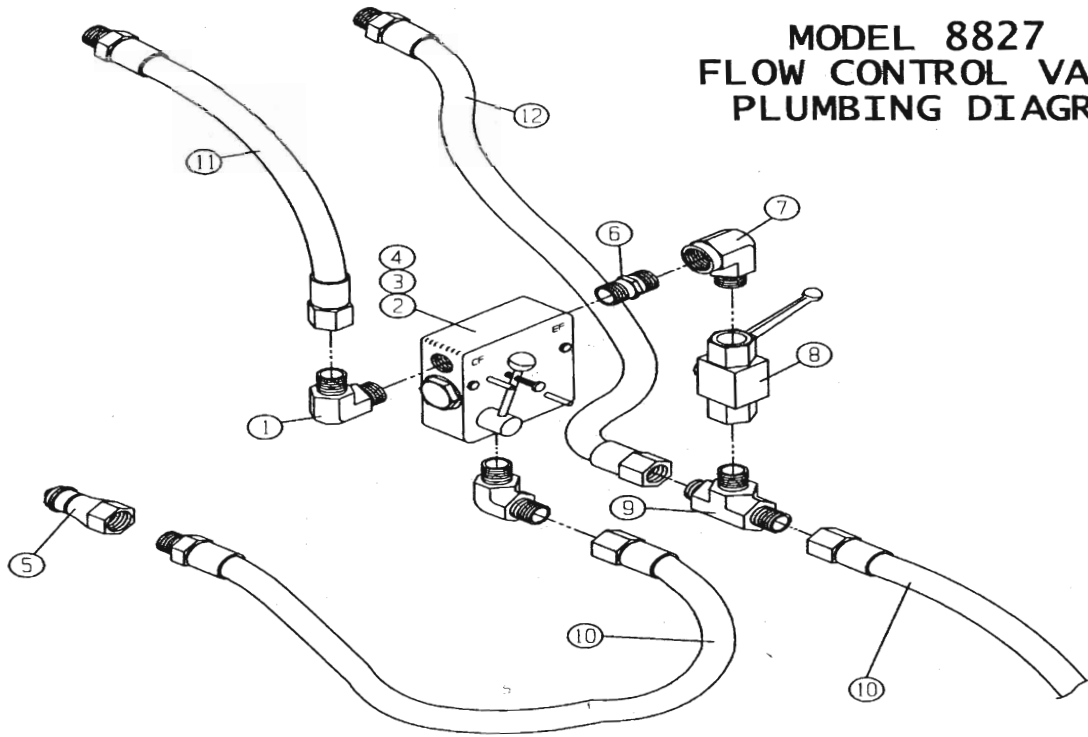
Ref. No.	LMC No.	Description	Qty. Req'd
1	79-144-88	Hose Assembly	2
2	79-101-88	Hose Assembly	6
3	79-046-88	Hose Assembly	1
4	79-145-88	Hose Assembly	2
5	79-102-88	Hose Assembly	1
6	79-131-88	Straight Thread 90° Elbow	2
7	79-054-88	Straight Thread Reducer	9
8	79-052-88	Straight Thread 90° Elbow	8
9	79-197-88	Restrictor (.032)	4
10	79-125-88	Straight Thread Adapter	2
11	79-055-88	Hose Assy ½ x 62 – AR-5	1
12	79-099-88	JIC Swivel Branch Tee	1
13	79-121-88	Straight Thread Connector	1
14	79-193-88	Brand 5-Function Valve	1
15	79-029-85	Plug	1
16	79-009-88	Elbow 90° Pipe to JIC (X-Long)	2
17	79-097-88	Elbow 90° Pipe to JIC	2
18	79-083-88	#8 Bulkhead Fitting	4
19	79-013-88	#6 Bulkhead Fitting	6
NS	72-043-88	Seal Kit, Brand 5-Function Valve	1

# MODEL 8827 5-FUNCTION RAKE HYDRAULIC LINE ROUTING



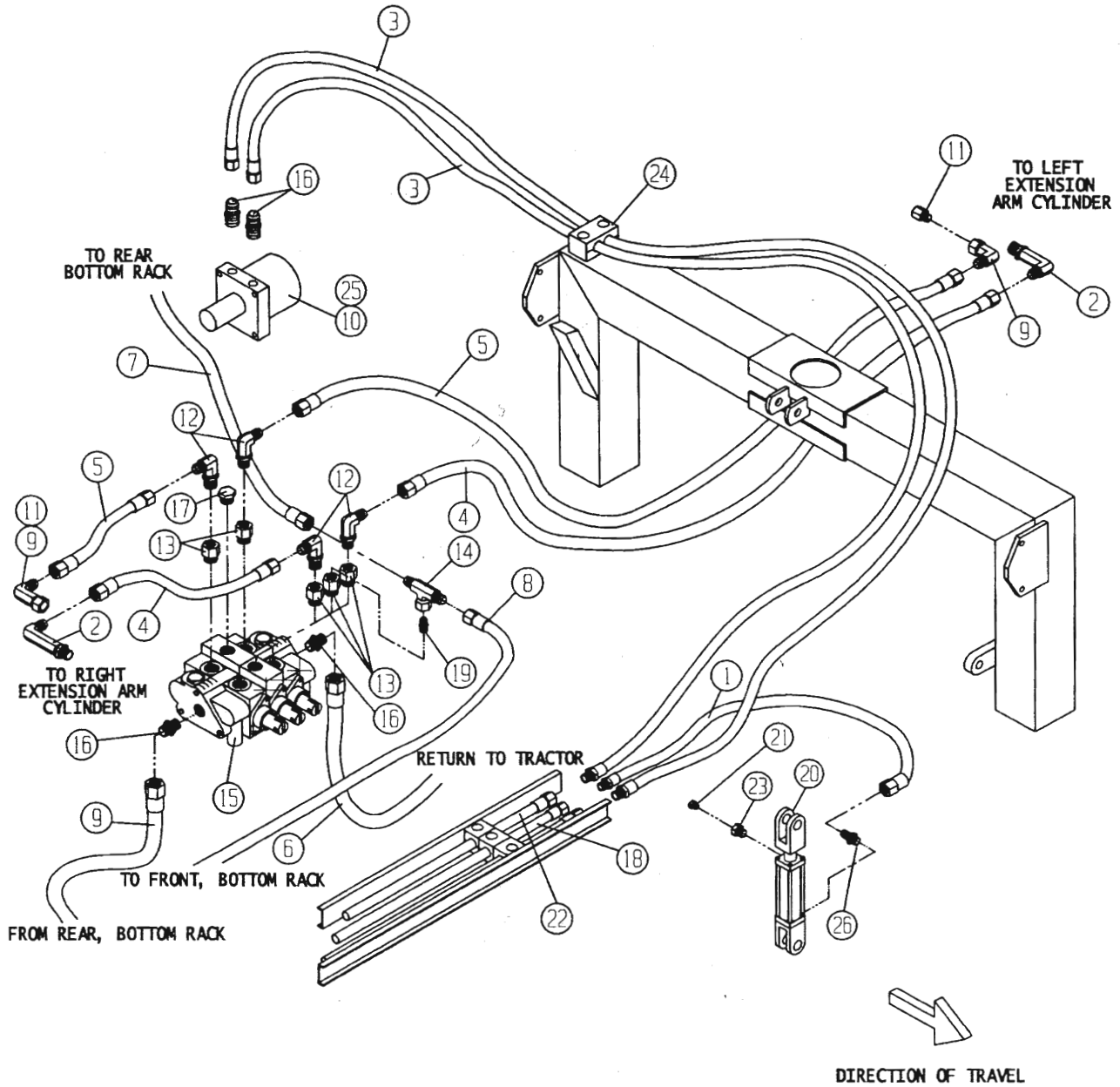
Ref. No.	LMC No.	Description	Qty. Req'd
1	79-167-88	Hose Assembly	2
2	79-061-88	Hose Assembly	4
3	79-065-88	Hose Assembly	2
4	79-064-88	Hose Assembly	2
5	79-108-88	3/4" twin Hose Clamp	2
6	79-131-88	Male Connector	4
7	84-021-88	Tubing Assy 3/8" x 75 1/2"	6
8	79-200-88	Basket Drive Motor	2
9	79-202-88	Heavy Duty Drive Motor	Optional
10	79-169-88	Straight Thread Connector	6
11	84-022-88	Tubing Assy 1/2" x 75 1/2"	4
12	79-169-88	Straight Thread Connector	2
13	79-171-88	Breather, Lift Cylinder	2
14	79-170-88	Lift Cylinder	2

## MODEL 8827 FLOW CONTROL VALVE PLUMBING DIAGRAM



Ref. No.	LMC No.	Description	Qty. Req'd
1	79-070-88	Male Elbow	2
2	79-212-88	Flow Control Valve, for use with Standard Motor	1
	79-211-88	Flow Control Valve, for use with Optional HD Motor	1
	72-049-88	Flow Control Valve Seal Kit, Brand FC-51	1
	72-050-88	Flow Control Valve Seal Kit, Prince RD1950-16	1
3	1412-0800	Hex Lock Nut 1/4 UNC	2
4	2816-0824	Hex Head Cap Screw	2
5	79-212-36	Quick Disconnect Adapter	2
6	79-068-38	Pipe Nipple	1
7	79-069-88	Street Elbow	1
8	79-072-88	Ball Valve	1
9	79-112-88	Male Run Tee	1
10	79-068-88	Hose Assembly	2
11	79-066-88	Hose Assembly	1
12	79-071-88	Hose Assembly	1

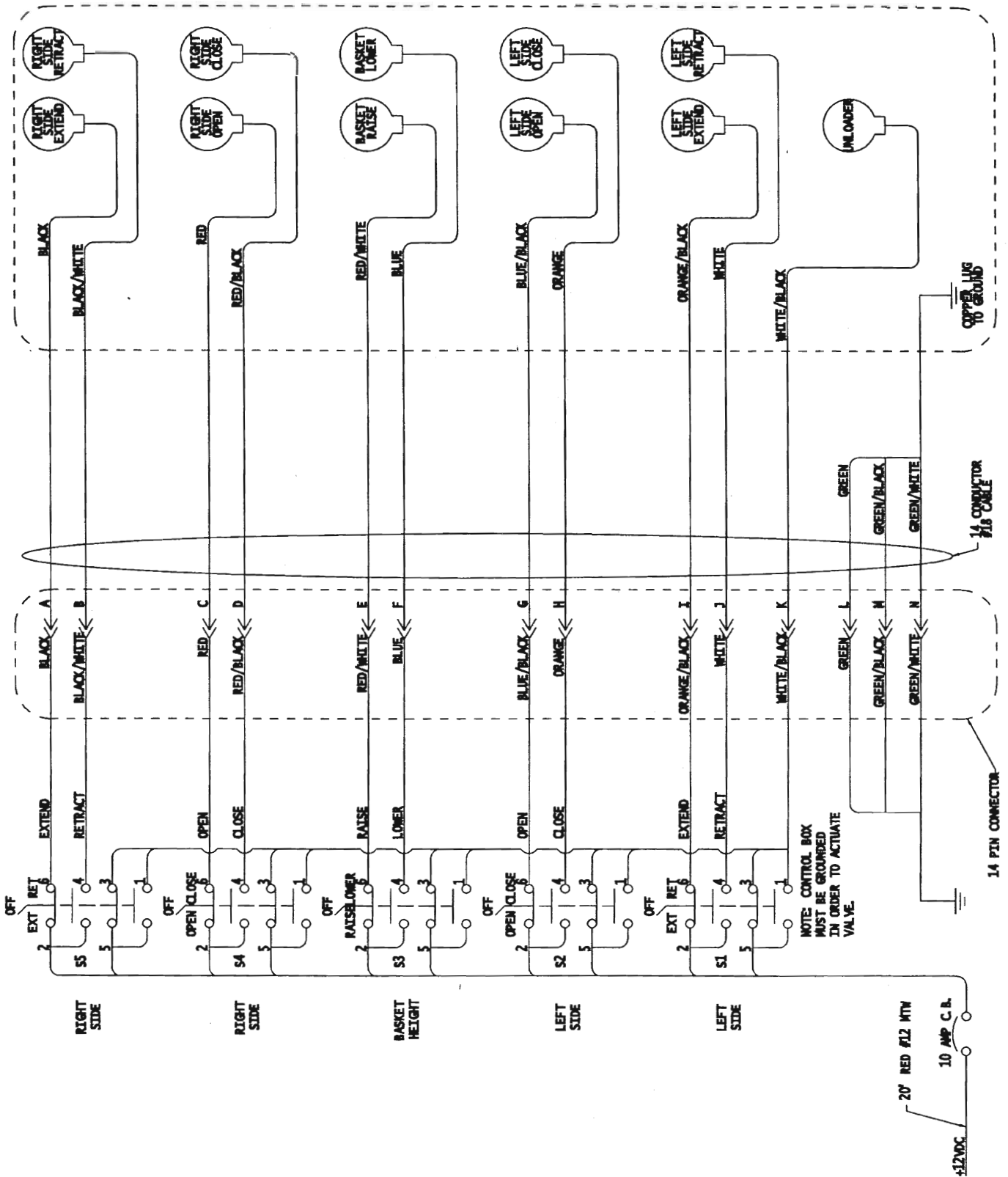
# MODEL 8827 3-FUNCTION RAKE HYDRAULIC LINE ROUTING



## 3-FUNCTION RAKE HYDRAULIC LINE ROUTING

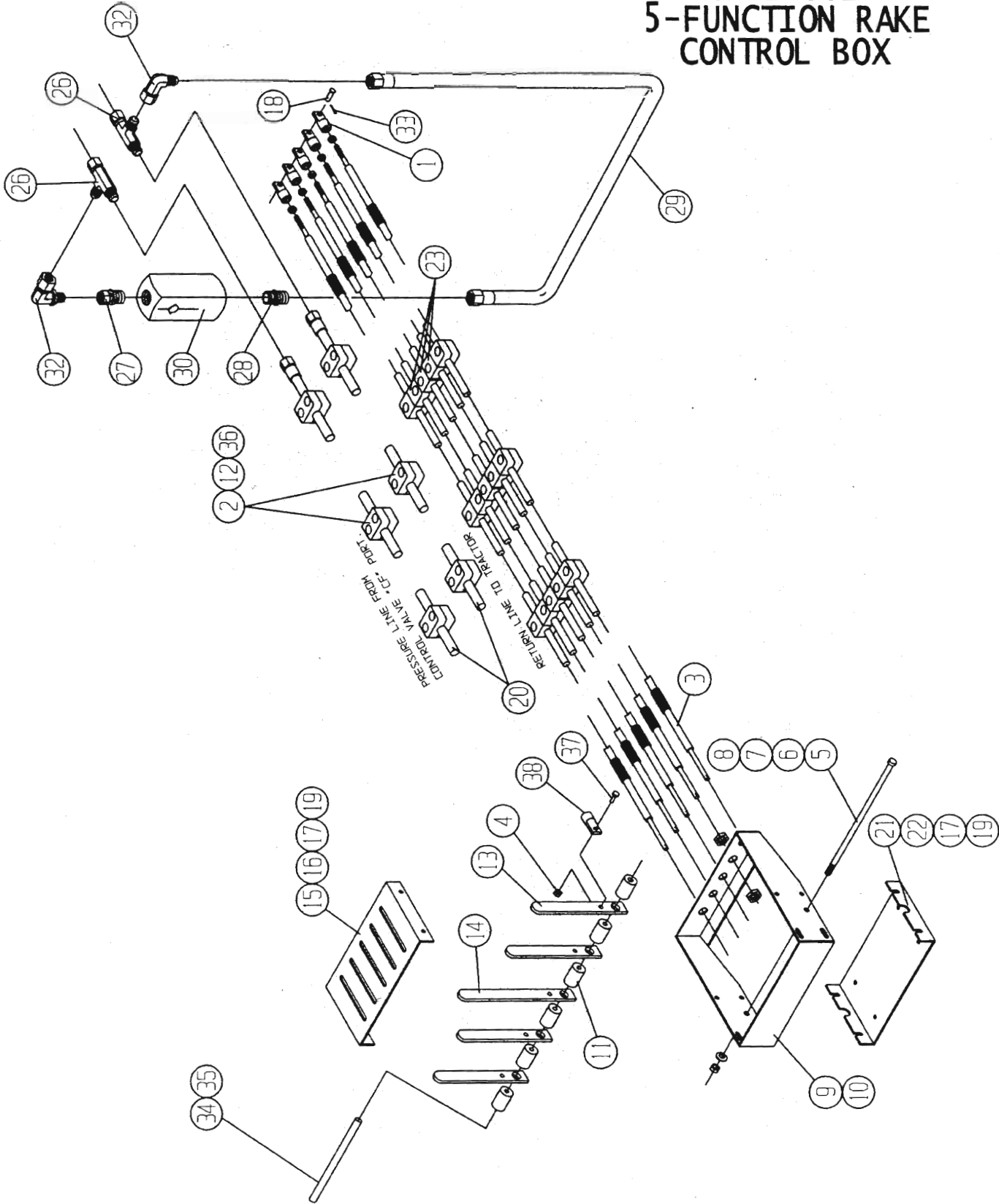
Ref. No.	LMC No.	Description	Qty. Req'd
1	79-167-88	Hose Assembly	2
2	79-009-88	Elbow 90°	2
3	79-061-88	Hose Assembly	4
4	79-145-88	Hose Assembly	2
5	79-144-88	Hose Assembly	2
6	79-102-88	Hose Assembly	1
7	79-055-88	Hose Assembly	1
8	79-101-88	Hose Assembly	2
9	79-097-88	Swivel Nut Elbow	2
10	79-200-88	Basket Drive Motor	2
11	79-125-88	Straight Thread Adapter	2
12	79-052-88	Straight Thread Elbow	4
13	79-054-88	Straight Thread Adapter	5
14	79-099-88	Swivel Branch, Tee	1
15	79-194-88	Brand 3-Function Control Valve	1
16	79-131-88	Male Connector	2
17	79-029-85	Straight Thread Plug	1
18	84-021-88	Tubing Assy 3/8" x 75 1/2"	2
19	79-121-88	Straight Thread Adapter	2
20	79-170-88	Basket Lift Cylinder	2
21	79-171-88	Breather, Lift Cylinder	2
22	84-022-88	Tubing Assy 1/2" x 75 1/2"	4
23	79-171-88	Pipe Adapter	2
24	79-108-88	3/4" Twin Hose Clamp	2
25	79-202-88	Heavy Duty Drive Motor	Optional
26	79-169-88	Straight Thread Connector	2

# ELECTRIC VALVE WIRING DIAGRAM





# MODEL 8827 5-FUNCTION RAKE CONTROL BOX

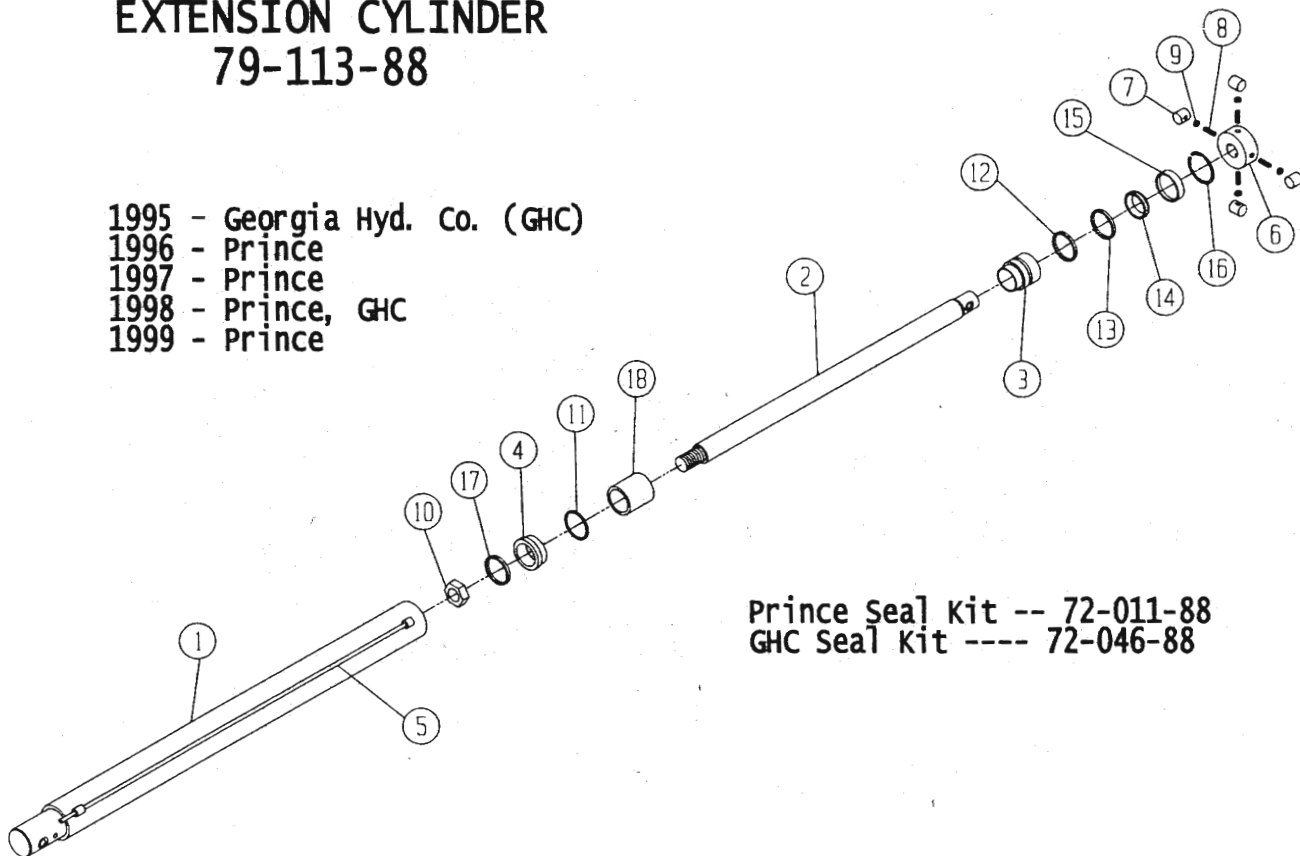


## CONTROL BOX ASSEMBLY

Ref. No.	LMC No.	Description	No. Req'd.	
			3 Function	5 Function
1	96-048-88	Morse Cable End	3	5
2	79-118-88	Stacking Kit	6	6
3	79-074-88	Morse Cable	3	5
4	1412-1000	Hex Lock Nut	3	5
5	<del>2813-1284</del>	Hex Bolt 3/8" UNC x 8 1/2" <i>2814-1290</i>	1	
6	<del>2813-1260</del>	Hex Bolt 3/8" UNC x 6" <i>2814-1260</i>		1
7	1702-1200	Flat Washer 3/8" SAE	1	1
8	1412-1200	Hex Lock Nut 3/8" UNC	1	1
9	85-109-88	Control Box (3 Spool)	1	
10	85-108-88	Control Box (5 Spool)		1
11	96-045-88	Spacer	4	6
12	2816-1013	Hex Bolt 5/16" UNC x 1 3/8" Gr. 5	12	12
13	98-046-88	Handle	2	4
14	98-045-88	Handle	1	1
15	93-118-88	Cover	1	
16	93-110-88	Cover		1
17	1702-0800	Flat Washers 1/4" SAE	8	8
18	79-135-88	Clevis Pin	3	5
19	79-147-88	Thumbscrew	8	8
20	84-018-88	Hydraulic Tube Assy 1/2" x 92"	2	2
21	93-119-88	Bottom Plate	1	
22	93-111-88	Bottom Plate		1
23	77-071-88	3/8" Hose Clamp	18	30
24	84-006-88	Complete Control Box Assy (5 Spool) (Incl. Items 1-22, ex. 5, 9, 15 & 21)		1
25	84-007-88	Complete Control Box Assy (3 Spool) (Incl. Items 1-21, ex. 6, 10, & 16)	1	
26	77-004-38	Female Swivel Run Tee	2	2
27	79-120-88	Swivel Connector	1	1
28	77-047-06	Male Connector	1	1
29	84-029-88	Tube Assembly Excess Flow	1	1
30	79-146-88	Check Valve	1	1
31	0832-0800	Hex Nut 1/4" UNF	6	10
32	77-058-06	Swivel 90° Elbow	2	5
33	79-136-88	Cotter Key	3	5
34	94-074-88	Control Box Bushing, 3-Spool	1	
35	94-073-88	Control Box Bushing, 5-Spool		1
36	77-072-88	1/2" Hose Clamp	12	12
37	2816-1010	Hex Head 5/16" UNC x 1"	3	5
38	79-073-88	Cable End Clevis	3	5

# EXTENSION CYLINDER 79-113-88

1995 - Georgia Hyd. Co. (GHC)  
 1996 - Prince  
 1997 - Prince  
 1998 - Prince, GHC  
 1999 - Prince

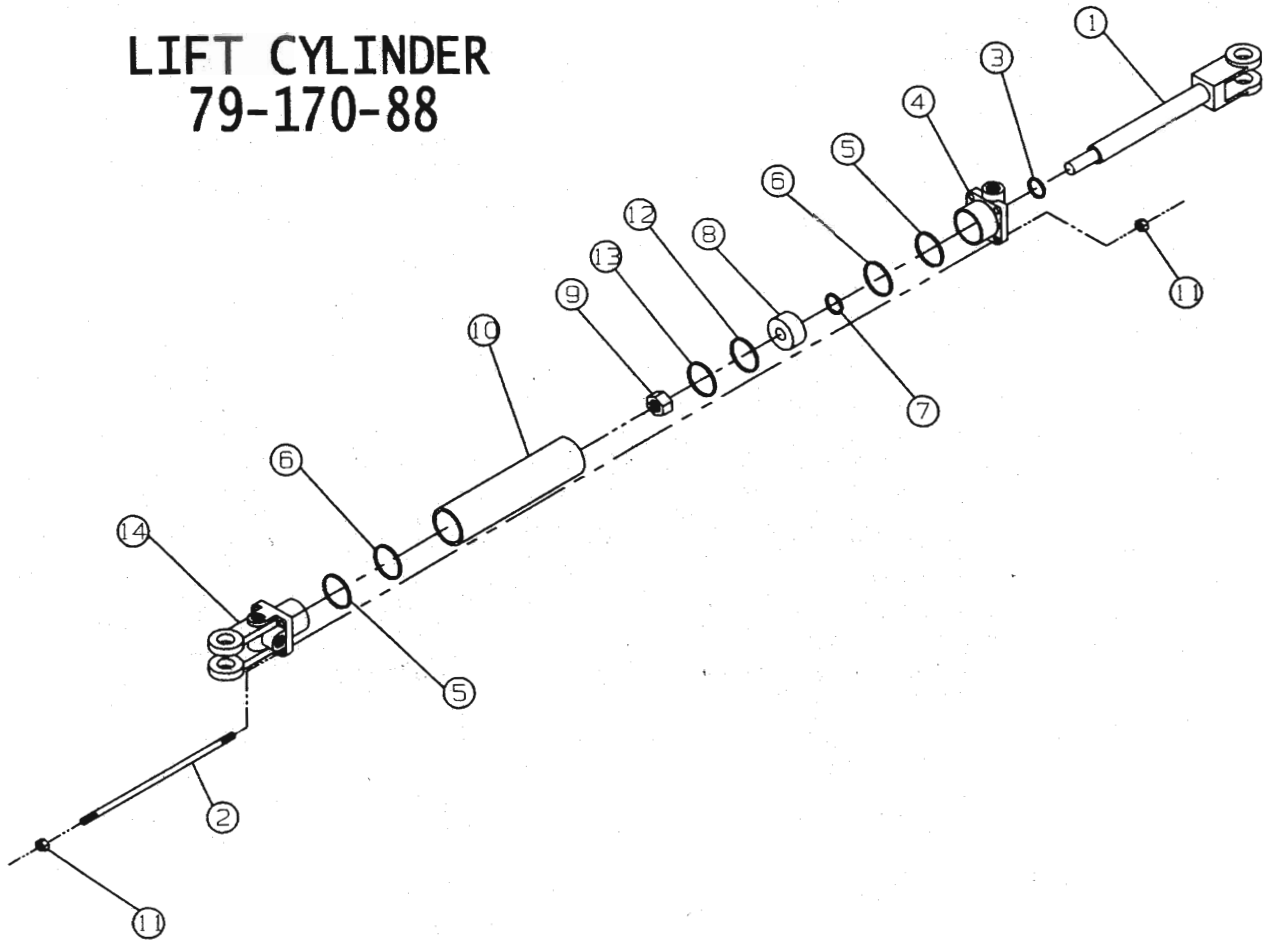


Prince Seal Kit -- 72-011-88  
 GHC Seal Kit ---- 72-046-88

**\*Consult LMC Mfg. Co. for Individual Repair Parts.**

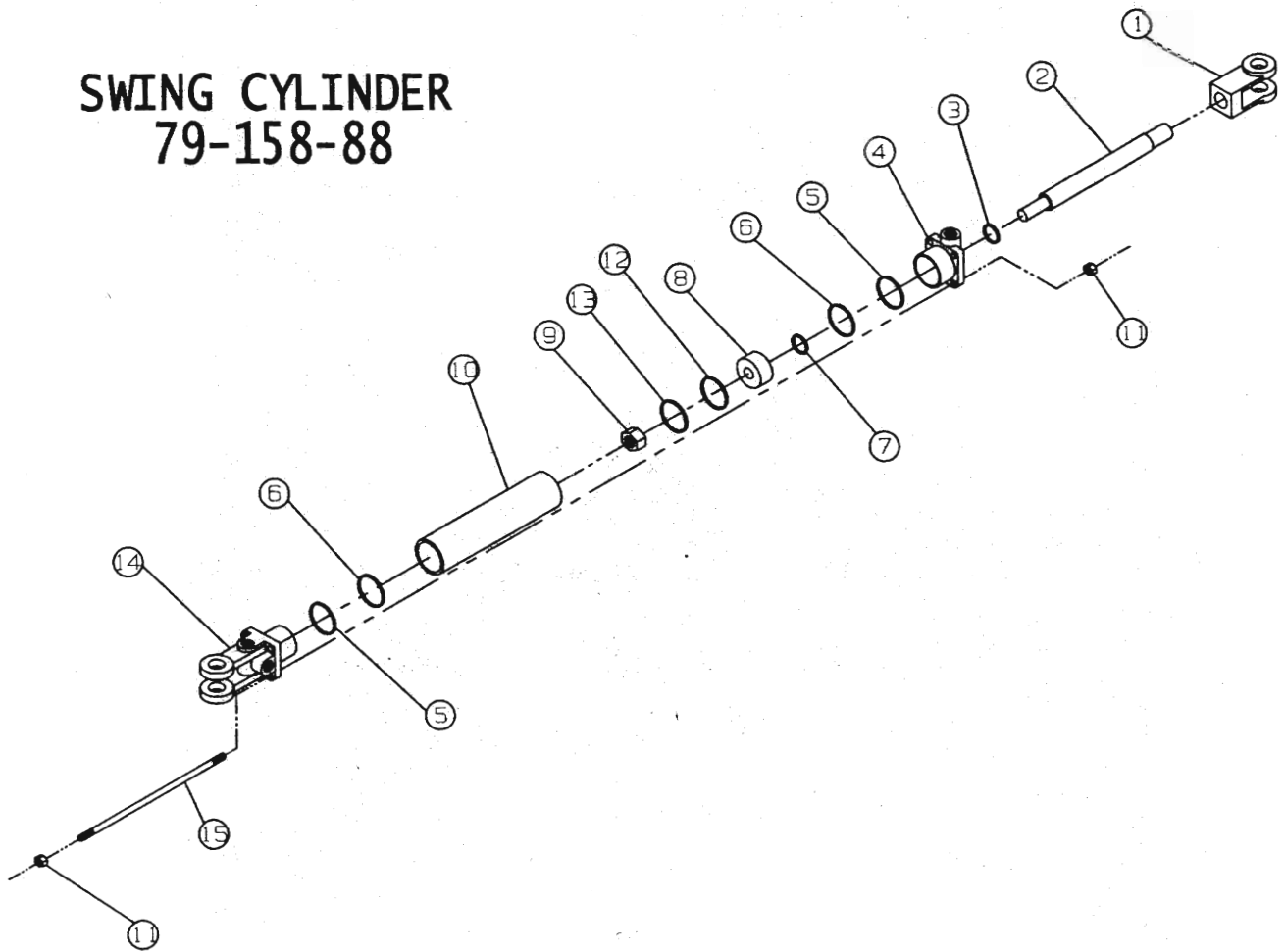
Ref. No.	LMC No.	Description	Qty. Req'd
1	77-102-88	Barrel Assy	2
2	77-103-88	Piston Rod	2
3	77-104-88	Piston Gland	2
4	77-105-88	Piston	2
5	77-003-88	Manifold Tube	2
6	77-015-88	Cylinder Cap	2
7	79-006-88	Teflon Bushing	8
8	79-011-88	Stud 1/2"-13 UNC	8
9	1012-1600	Jam Nut 1/2"-13 UNC	8
10	77-106-88	Locknut	3
11	77-084-88	O-Ring	2
12	77-031-88	O-Ring	2
13	77-012-88	Backup Washer	2
14	77-009-88	U-Cup	2
15	77-013-88	Wiper	2
16	77-110-88	Snap Ring	1
17	77-083-88	Bearing Ring	2
18	77-081-88	Spacer	2
NS	77-007-88	Crown Seal	2
NS	72-011-88	Seal Kit (Consist of Items 13-18)	2

# LIFT CYLINDER 79-170-88



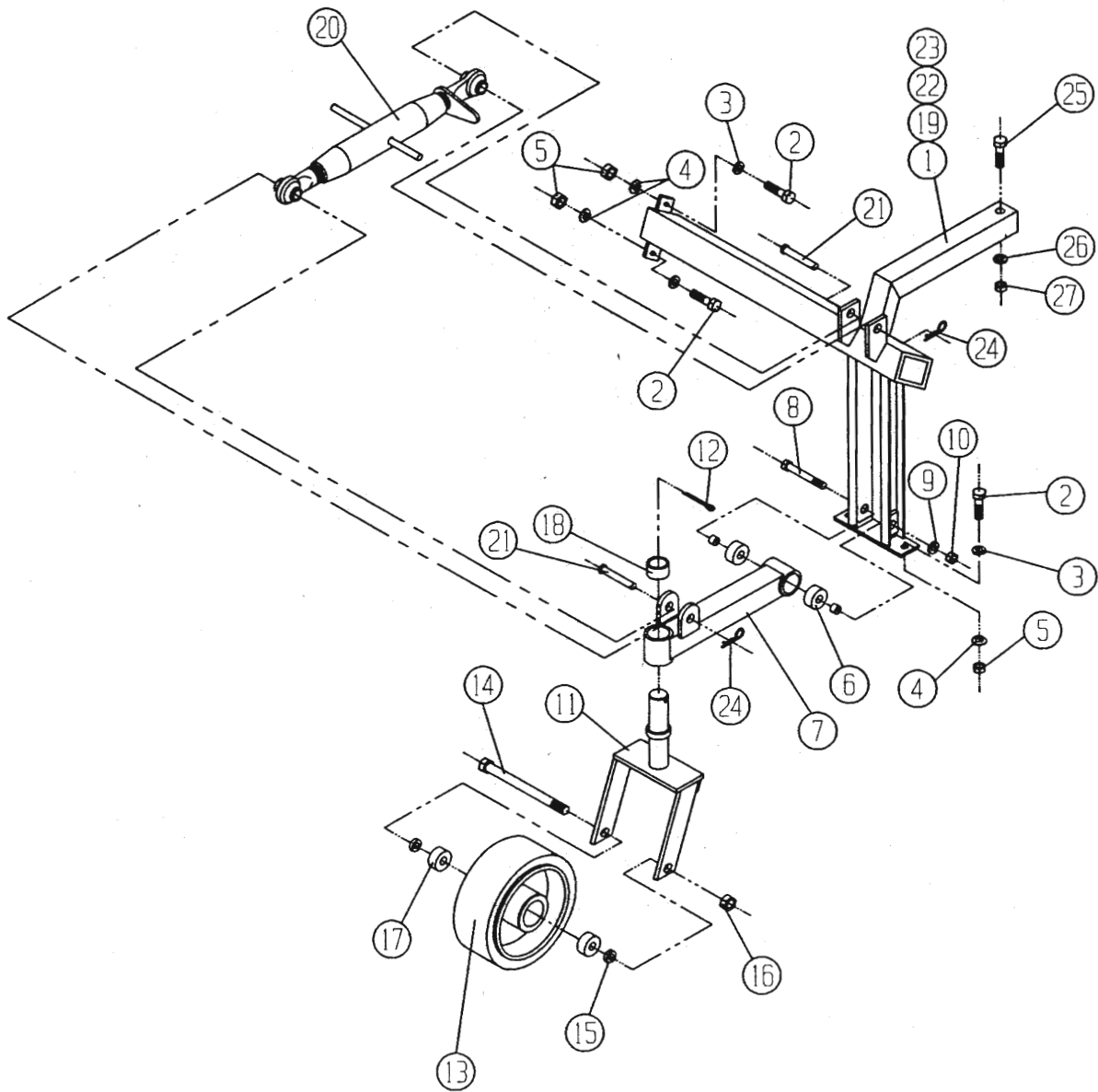
Ref. No.	LMC No.	Description	Qty. Req'd
1	77-155-88	Rod with Clevis	2
2	77-157-88	Tie Road	8
3	77-135-88	Seal	2
4	77-136-88	Rod Cap	2
5	77-137-88	Back Up Washer	4
6	77-138-88	O-Ring	4
7	77-139-88	Rod Seal	2
8	77-140-88	Piston	2
9	1411-2400	Hex Lock Nut 3/4"-16 UNF	2
10	77-156-88	Barrel	2
11	0811-1200	Hex Nut 3/8"-16 UNC	16
12	77-142-88	O-Ring	2
13	77-143-88	Piston Ring	2
14	77-144-88	Clevis Cap	2
NS	77-152-88	Seal Kit	2

# SWING CYLINDER 79-158-88



Ref. No.	LMC No.	Description	Qty. Req'd
1	77-133-88	Rod Clevis	2
2	77-134-88	Cylinder Road	8
3	77-135-88	Seal	2
4	77-136-88	Rod Cap	2
5	77-137-88	Back Up Washer	4
6	77-138-88	O-Ring	4
7	77-139-88	Rod Seal	2
8	77-140-88	Piston	2
9	1411-2400	Hex Lock Nut 3/4"-16 UNF	2
10	77-141-88	Barrel	2
11	0811-1200	Hex Nut 3/8"-16 UNC	16
12	77-142-88	O-Ring	2
13	77-143-88	Piston Ring	2
14	77-144-88	Clevis Cap	2
15	77-145-88	Tie Road	8
NS	77-152-88	Seal Kit	2

# MODEL 8827 OPTIONAL GAUGE WHEEL



## GAUGE WHEEL ASSEMBLY

Ref. No.	LMC No.	Description	Qty. Req'd
1	85-114-88	Gauge Wheel Mount, Front Right	1
2	2816-1612	Hex Head Bolt ½ UNC x 1 ¼"	5
3	1702-1600	Flat Washer ½" SAE	3
4	1602-1600	Lock Washer ½" SAE	5
5	1412-1600	Hex Lock Nut ½ UNC	5
6	77-052-88	Sealed Ball Bearing	2
7	85-047-88	Pivot Tube	1
8	2816-2450	Hex Head Bolt ¾" UNC x 5"	1
9	1702-2400	Flat Washer ¾" SAE	2
10	1412-2400	Hex Lock Nut ¾" UNC	1
11	85-020-88	Yoke	1
12	79-089-88	Cotter Pin ¼" x 3"	1
13	79-177-88	Tire & rim Assembly	1
14	2816-2480	Hex Head Bolt ¾" UNC x 8"	1
15	1702-2400	Flat Washer ¾" SAE	2
16	1412-2400	Hex Lock Nut ¾" UNC	1
17	94-068-88	Spacer	2
18	94-032-88	Bronze Bushing	2
19	85-115-88	Gage Wheel Mount, Front Left	1
20	79-022-88	Angle Adjusting Arm	1
21	79-082-88	Clevis Pin ¾" x 3 ¼"	2
22	85-117-88	Gage Wheel Mount, Rear Left	1
23	85-116-88	Gage Wheel Mount, Rear Right	1
24	79-043-06	Hair Pin Clip	2
25	2816-2030	Hex Head Bolt 5/8"UNC x 3" Gr. 5	1
26	1702-2000	Flat Washer 5/8" SAE	2
27	1412-2000	Hex Lock Nut 5/8" UNC	1

