

LMC

Lewis M. Carter, Mfg.

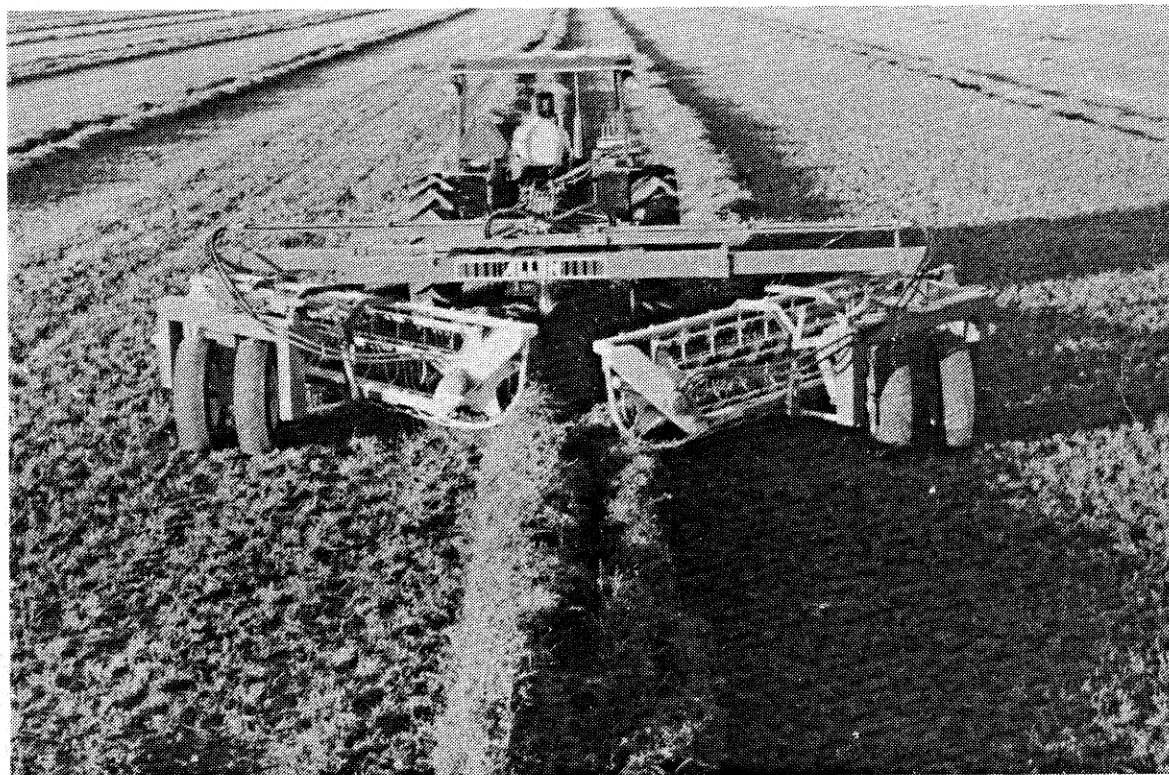
ALLEN 8827 BASKET RAKE

QUALITY

SINCE 1954

SERVICE

"BUILT TO LAST EQUIPMENT"



8827 BASKET RAKE

PARTS MANUAL / JANUARY 1994

PLEASE PLACE ALL ORDERS FOR PARTS AND WHOLE GOODS
THROUGH OUR NEVADA WAREHOUSE PHONE: 888-459-9615 FAX: 775-246-4512

CONTENTS

MAIN FRAME	2
EXTENSION ARMS	4
BASKET ADAPTER, HANGER & LIFT	7
HUB & STAR ASSEMBLY	9
BASKET FRAME, GUARDS & STRIPPER BARS	12
BOTTOM RACK HYDRAULIC SCHEMATIC	13
TOP RACK HYDRAULIC SCHEMATIC	15
SPOOL & CHECK VALVE HYDRAULIC LINE ROUTING	16
BASKET HANGER & DRIVE MOTOR HYDRAULIC LINE ROUTING (5 func)	22
FLOW CONTROL VALVE	23
BASKET HANGER & DRIVE MOTOR HYDRAULIC LINE ROUTING (3 func)	24
CONTROL BOX	26
MAIN CYLINDER	28
LIFT CYLINDER	30
SWING CYLINDER	31
GAUGE WHEEL	32
INDEX34, 35 & 36

MODEL 8827 TWIN
MAIN FRAME
(3 and 5 Function)

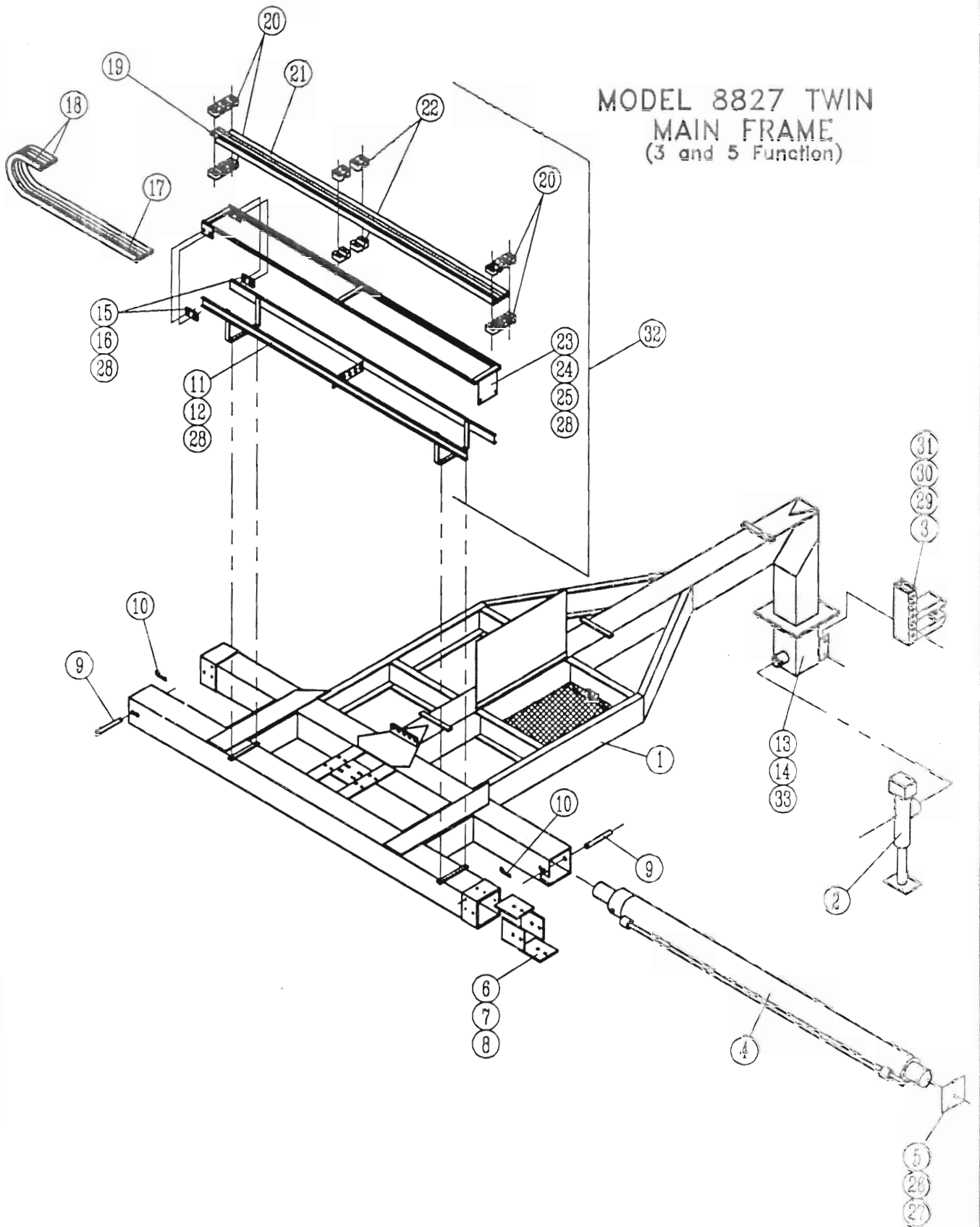


Fig. 1

Main Frame Assembly

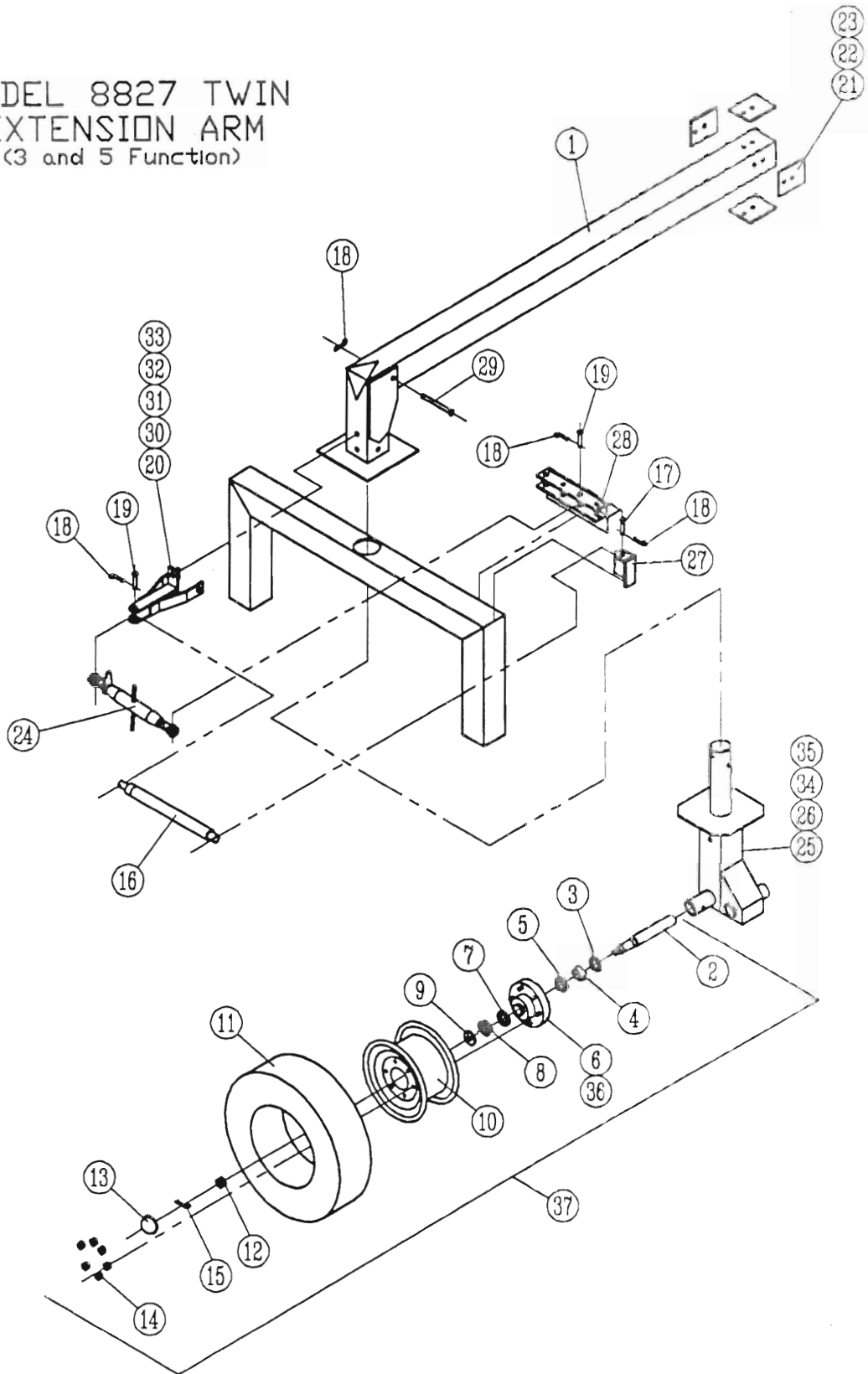
Ref. No.	Allen No.	Harrell No.	Description	No. Req'd.	
				3 Function	5 Function
1	82100	85-012-88	Main Frame	1	1
2	77115	79-040-88	Jack Stand	1	1
3	76108	85-026-88	Double Lip Hitch	1	1
4	82561	79-007-88	Main Cylinder 1992 & Before	2	2
4		79-113-88	Telescoping Cylinder 1993 & After	2	2
5	81114	93-018-88	End Cap	2	2
6	81125	79-003-88	Poly Slide Bearing	8	8
7		2814-1006	Cap Screws 5/16UNC x 3/4"	16	16
8		0812-1000	Hex Nut 5/16UNC	16	16
9	81207	79-086-88	Clevis Pin 3/4" x 6 1/2"	2	2
10	81206	79-128-06	Hair Pin Clip	4	4
11		85-009-88	Guide Rail Right and Left Extension	2	2
12		2814-0810	Cap Screws 1/4UNC x 1"	8	8
13		85-050-88	Lower Hitch Tube	1	1
14		2816-2420	Hex Head Bolt 3/4UNC x 2"	4	4
15	81146	79-001-88	Poly Slide Bearing	4	4
16		0412-0810	Flat Head Screws 1/4UNC x 1 UNC	8	8
17	87661-A	79-041-88	Hose Ass'y 51" OAL - AR-17	2	6
18	87661-B	79-015-88	Hose Ass'y 51" OAL - AR-7	4	4
19	81155	84-021-88	Tubing 3/8" x 75 1/2"	2	6
20	76389	79-016-88	Tubing Clamp 3/8"	6	18
21	81166	84-022-88	Tubing 1/2" x 75 1/2"	4	4
22	76390	79-012-88	Tubing Clamp 1/2"	12	12
23		85-028-88	Tubing Rack	2	2
24		2814-0804	Cap Screws 1/4UNC x 1/2"	4	4
25		1702-0800	Flat Washers 1/4"	4	4
26		2814-0806	Cap Screw 1/4UNC x 3/4UNC	4	4
27		1702-0800	Flat Washer 1/4" SAE	4	4
28		1412-0800	Hex Lock Nut 1/4UNC	15	15
29		2816-2060	Cap Screw 5/8UNC x 6"	2	2
30		1412-2000	Hex Lock Nut 5/8UNC	2	2
31		1702-2000	Flat Washer 5/8" SAE	2	2
32		84-002-88	Rack Ass'y. (includes 11,12, 15-25,28)	2	2
33		1412-2400	Hex Lock Nut 3/4UNC	4	4

85-0604-88 BALL HITCH (1994)

(3)

→ This # used on Main Frame 1992 thru 1994

MODEL 8827 TWIN
EXTENSION ARM
(3 and 5 Function)



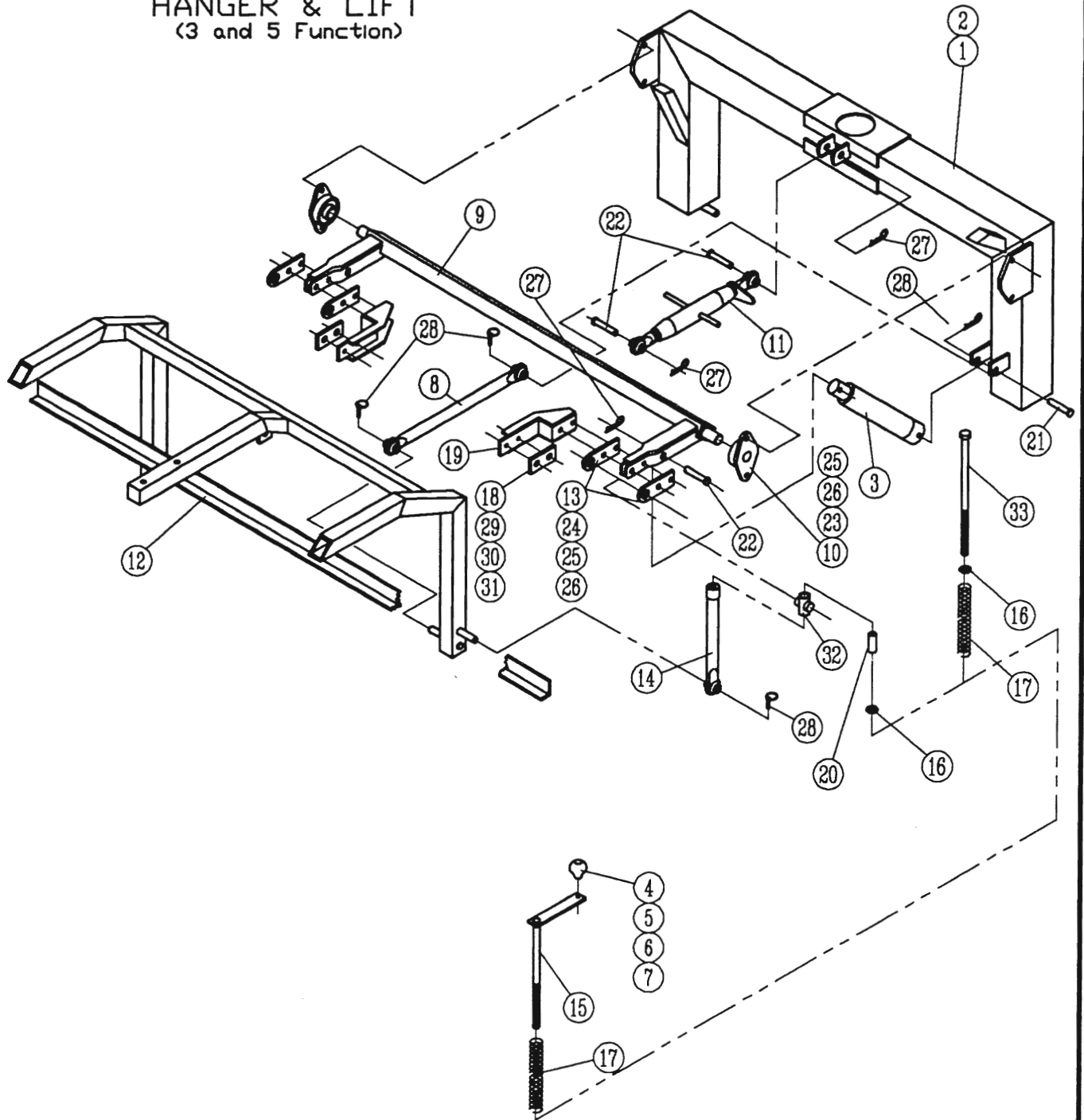
Extension Arm Assembly

Ref. No.	Allen No.	Harrell No.	Description	No. Req'd.	
				3 Function	5 Function
1	87200	85-015-88	Extension Arm	2	2
2	81216	96-004-88	Spindle Shaft (1993 & earlier)	4	4
	81216	77-003-02	Spindle Shaft (1994)	4	4
3	81222	77-017-88	Seal (1993 & earlier)	4	4
	81222	77-006-02	Seal (1994)	4	4
4	81233	77-018-88	Inner Bearing (1993 & earlier)	4	4
	81233	77-007-02	Inner Bearing (1994)	4	4
5	81220	77-019-88	Inner Race (1993 & earlier)	4	4
6	81218	77-020-88	Hub With Bolts, & Race (1993 & earlier)	4	4
	81218	77-001-02	Hub With Cups (1994)	4	4
7	76224	77-021-88	Outer Race	4	4
8	76222	77-008-02	Outer Bearing	4	4
9	81224	77-005-02	Spindle Washer	4	4
10	81235	79-017-88	6 Hole Wheel	4	4
11	81236	79-018-88	Tire (7.50 x 15 Smooth)	4	4
12	81217	77-023-88	Castell Nut (1993 & earlier)	4	4
	81217	77-004-02	Spindle Nut (1994)	4	4
13	81234	77-026-88	Hub Cap (1993 & earlier)	4	4
		77-012-02	Hub Cap (1994)	4	4
14	81223	77-024-88	Lug Nuts (1993 & earlier)	24	24
		77-013-02	Lug Bolts - 1/2-20UNF (1994)	24	24
15	81215	77-011-02	Cotter Pin	4	4
16	81501	79-020-88	Cylinder (1992 & earlier)		2
		79-115-88	Cylinder (1993 & later)		2
17	81366	79-079-88	Clevis Pin 5/8" x 2 1/4"		2
18	81522	79-128-06	Hair Pin Clip		6
19	81507	79-080-88	Clevis Pin 3/4" x 2 3/4"	4	2
20	87001	85-016-88	Swing Cylinder Rear Mount	2	2
21	81125	79-003-88	Poly Slide Bearing	8	8
22		2814-1006	Cap Screws 5/16UNC x 3/4"	16	16
23		0812-1000	Hex Nut 5/16UNC	16	16
24	76188	79-022-88	Angle Adjusting Arm	2	
25	87201	85-007-88	Right Hand Lower Axle	1	1
26	87201	85-006-88	Left Hand Lower Axle	1	1
27	87002	85-017-88	Swing Cylinder Front Mount		2
28	87003	85-039-88	Adjusting Arm Front Mount	2	

Extension Arm Assembly

Ref. No.	Allen No.	Harrell No.	Description	No. Req'd.	
				3 Function	5 Function
29		79-087-88	Pin 3/4" x 6"	2	2
30		2816-2060	Hex Head Bolt 5/8UNC x 6"	2	2
31		2816-2070	Hex Head Bolt 5/8UNC x 7"	2	2
32		1412-2000	Hex Lock Nut 5/8UNC	4	4
33		1702-2000	Flat Washer 5/8"	8	8
34		2816-1234	Hex Head Bolt 3/8UNC x 3 1/2"	4	4
35		1412-1200	Hex Lock Nut 3/8UNC	4	4
36	81238	77-025-88	Stud (1993 & earlier)	6	6
37	81215	84-008-88	Hub Ass'y.(includes items 2-9 & 12-15) 1993 & Earlier	4	4
		79-001-02	Hub Ass'y.(includes items 2-9 & 12-15) with spindle 1994	4	4

MODEL 8827 TWIN
BASKET ADAPTER,
HANGER & LIFT
(3 and 5 Function)



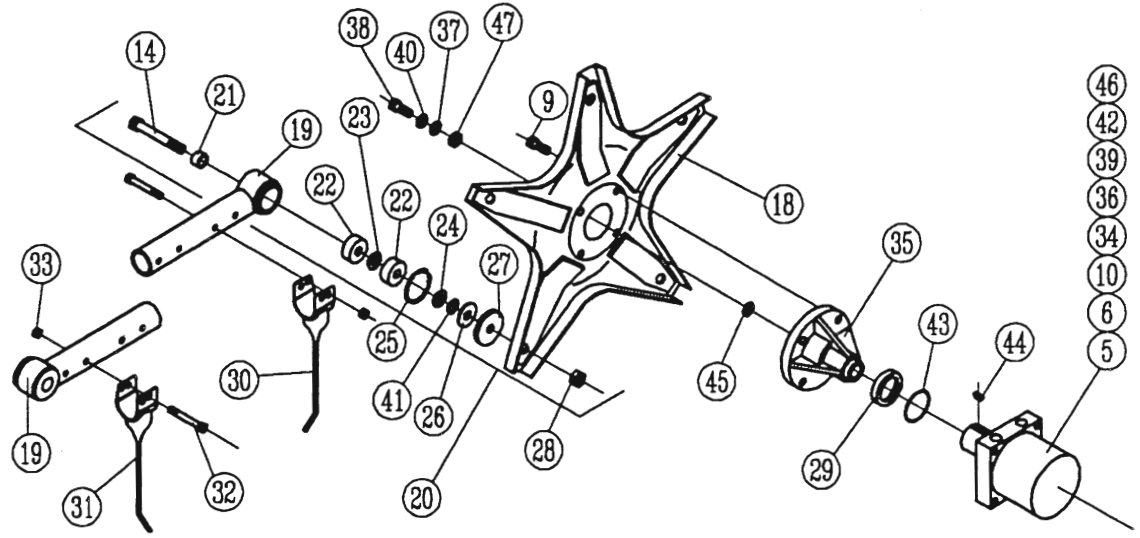
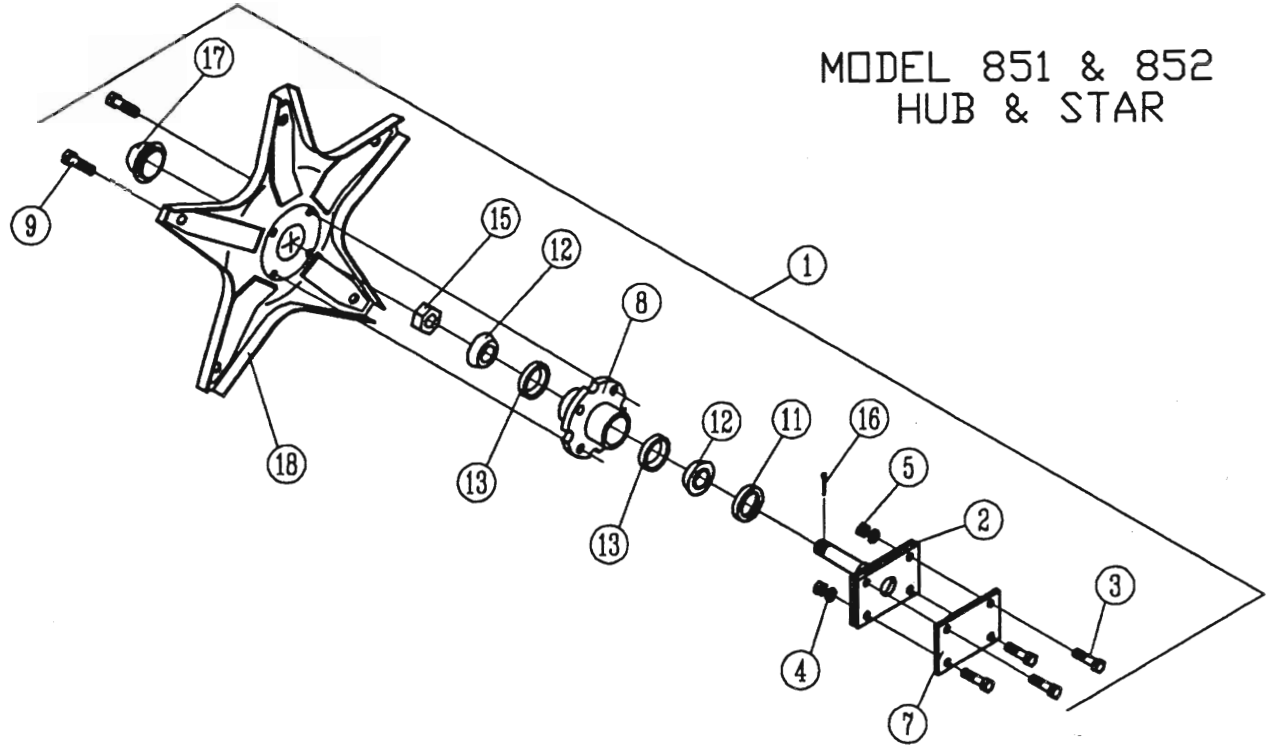
1993 and earlier
Crank Arm Ass'y.

Basket Adapter, Hanger & Lift Assembly

No. Req'd.

Ref. No.	Allen No.	Harrell No.	Description	3 Function	5 Function
1	87004	85-013-88	Left Hand Swing Arm	1	1
2		85-014-88	Right Hand Swing Arm	1	1
3	85124	79-023-88	Lift Cylinder 1992 & Before	2	2
		79-114-88	Lift Cylinder 1993 & Earlier	2	2
4	77035	79-024-88	Crank Knob	4	4
5		2814-1222	Cap Screws 3/8UNC x 2 1/4"	4	4
6		1702-1200	Flat Washers 3/8" SAE	4	4
7		1412-1200	Hex Lock Nut 3/8UNC	4	4
8	85009	85-029-88	Bottom Basket Standoff	4	4
9	85010	85-011-88	Basket Pivot Bar	2	2
10	77102-A	79-025-88	Two Bolt Flange Bearing	4	4
11	76188	79-022-88	Angle Adjusting Arm	2	2
12		85-048-88	Basket Adapter	2	2
13	76190	98-039-88	Guide Mounts	8	8
14	87005	85-030-88	Ground Pressure Adjusting Arm	4	4
15	87006	85-008-88	Crank Arm 17"	4	4
16		79-126-88	Flat Washer 3/4" Narrow	8	8
17	77042	79-028-88	Spring	4	4
18	87304	79-002-88	Poly Slide Bearing	4	4
19	87305	85-021-88	Basket Adapter Guide	4	4
20		77-066-88	Nylon Bushing	4	4
21		79-082-88	Clevis Pin 3/4" x 3 3/4"	2	2
22		79-081-88	Clevis Pin 3/4" x 3"	6	6
23		2816-1620	Cap Screw 1/2UNC x 2"	8	8
24		2816-1634	Cap Screw 1/2UNC x 3 1/2"	8	8
25		1412-1600	Hex Lock Nut 1/2UNC	16	16
26		1702-1600	Flat Washers 1/2" SAE	16	16
27	81522	79-128-06	Hair Pin Clip	8	8
28		79-045-06	Lynch Pin	12	12
29		0315-1414	Plow Bolt 7/16" x 1 1/2"	8	8
30		1702-1400	Flat Washer 7/16" SAE	8	8
31		1412-1400	Hex Lock Nut 7/16UNC	8	8
32		77-065-88	Adjusting Rod Guide	4	4
33		79-142-88	Special Bolt	4	4

MODEL 851 & 852 HUB & STAR



Hub & Star Assembly

Ref. No.	Allen No.	Harrell No.	Description	No. Req'd.	
				3 Function	5 Function
1	77127	84-004-88	Hub Ass'y. (inc. items 2-17 exc. 14)	2	2
2	77128	85-033-88	Hub Spindle 1992 & After	2	2
	77128	85-051-88	Hub Spindle Prior to 1992	2	2
3		2816-1620	Cap Screws 1/2UNC x 2"	8	8
4		1702-1600	Flat Washers 1/2" SAE	8	8
5		1412-1600	Hex Lock Nut 1/2UNC	16	16
6	87308	72-007-88	White Motor Seal Kit	1	1
7	77129	98-035-88	Hub Backing Plate	2	2
8		77-041-88	Hub with Cups 1992 & After	2	2
	77014	77-070-88	Hub with Cups Prior to 1992	2	2
9	77015	77-013-02	Hub Bolt	16	16
10		79-039-88	White Motor Drive Shaft	1	1
11	77016	77-044-88	Seal	2	2
12	77077	77-045-88	Bearing	4	4
13	77017	77-046-88	Race (pressed in hub)	4	4
14		2836-2434	Hex Head Bolt 3/4UNF x 3 1/2"	20	20
15	77057	77-048-88	Spindle Nut	2	2
16	77085	77-049-88	Cotter Pin 1/8" x 2"	2	2
17	77058	77-050-88	Hub Cap	2	2
18	77111	85-031-88	Star	4	4
19	81417	85-032-88	Tine Bar (Without bearings)	10	10
20	77067	84-005-88	Bearing & Bolt Ass'y. (Items 14,21-28)	20	20
21		94-021-88	Bushing	20	20
22	77069	77-052-88	Sealed Roll Bearing	40	40
23	77070	77-054-88	Shim	20	20
24	77071	77-064-88	Spacer	20	20
25	77072	77-055-88	Snap Ring	20	20
26	77073	77-067-88	Heavy Washer	20	20
27	77074	77-056-88	Shield	20	20
28	77082	1432-2400	3/4UNF Stover Lock Nut	20	20
29	87306	92-003-88	Plastic Motor Guard Discontinued After 1992	2	2
30	78020	79-026-88	Tine, R.H. (import)	110	110
		79-109-88	Tine, R.H. (domestic)	110	110
19		84-010-88	Tine Bar (With bearings)	10	10

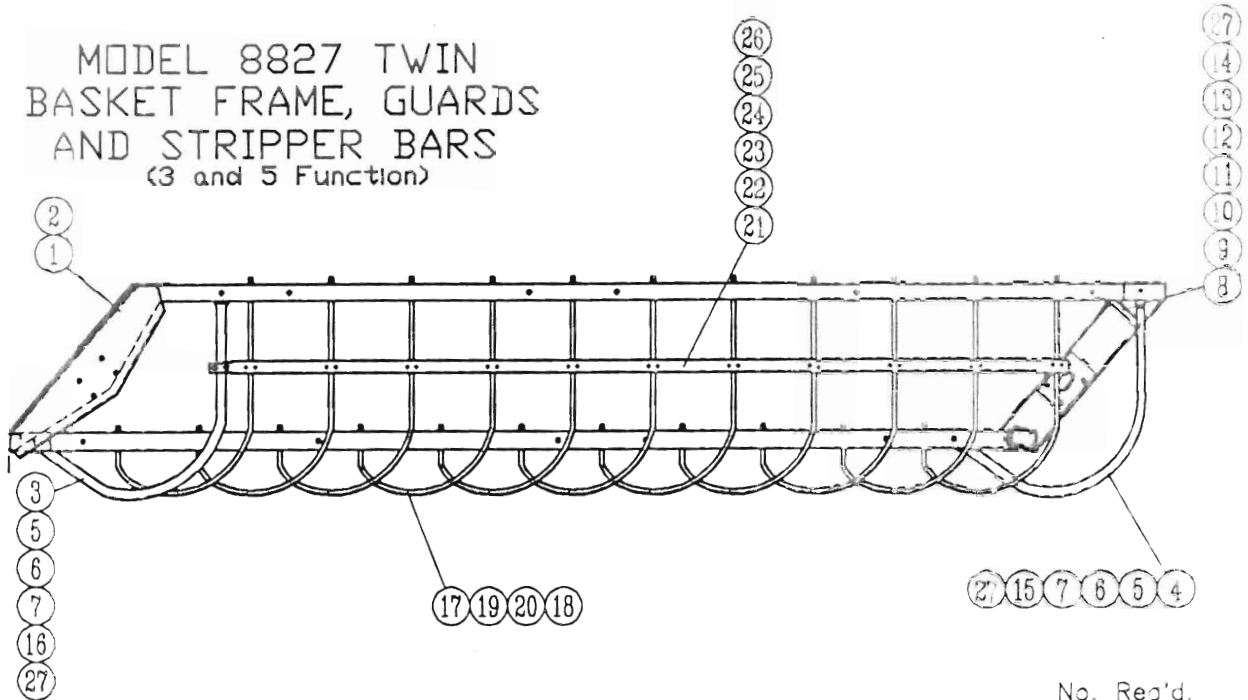
(Cont'd.)

Hub & Star Assembly

(Cont'd.)

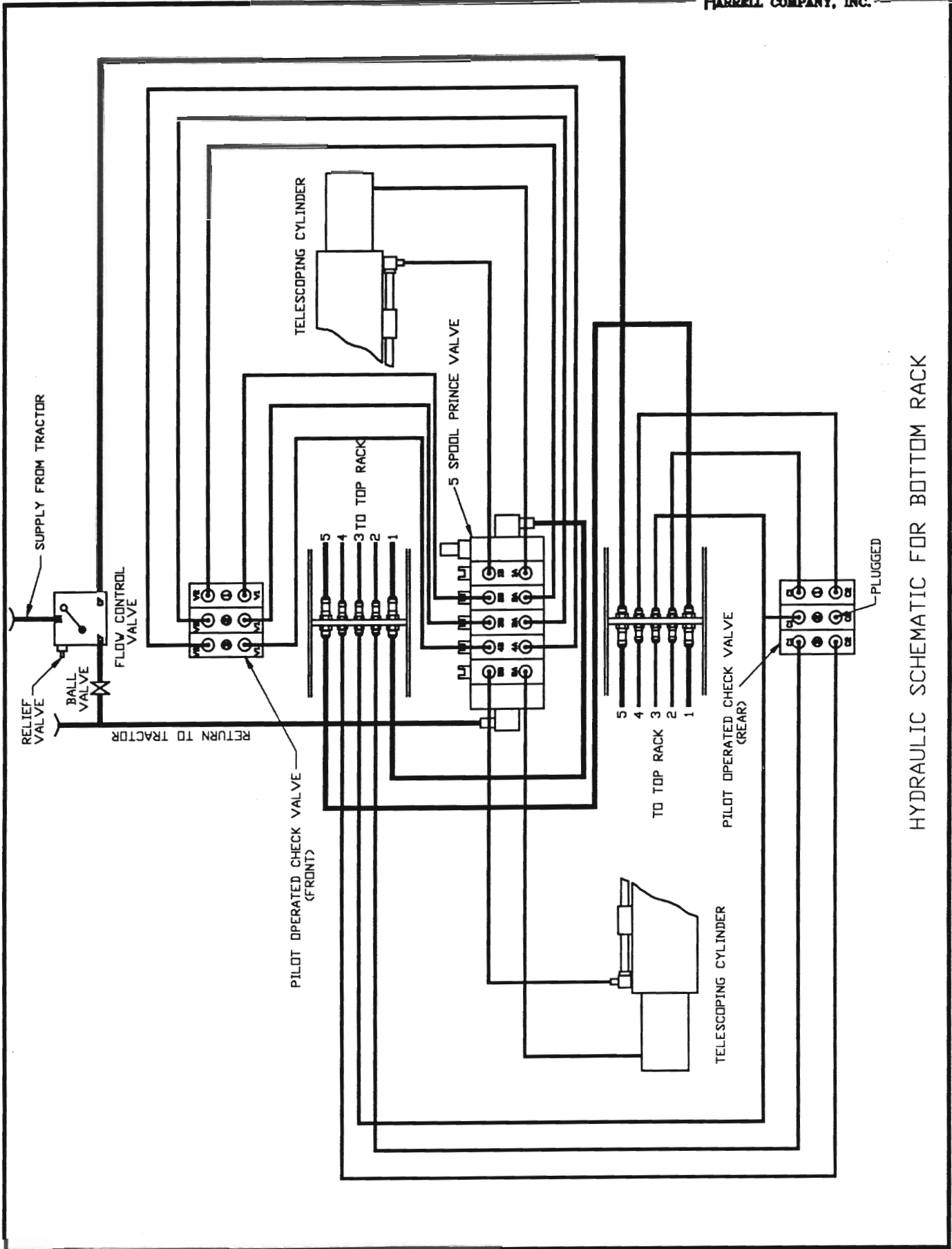
Ref. No.	Allen No.	Harrell No.	Description	No. Req'd.	
				3 Function	5 Function
31	78120	79-030-88	Tine, L.H. (import)	110	110
		79-110-88	Tine, L.H. (domestic)	110	110
32		2816-1224	Cap Screws 3/8UNC x 2 1/2' Gr 5	220	220
33		1412-1200	Lock Nuts 3/8UNC	220	220
34	87310	79-059-88	White Motor Drive Shaft	1	1
35	87307	79-031-88	Drive Hub	2	2
36	81433	79-032-88	Drive Motor (Standard)	2	2
37		1702-2000	Flat Washer 5/8"	2	2
38		2836-2012	Cap Screw 5/8UNF x 1 1/4"	2	2
39		2816-1624	Cap Screw 1/2UNC x 2 1/2' Gr 5	8	8
40		1602-2000	Lock Washer 5/8" SAE	2	2
41		77-068-88	Spacer	AR	AR
42	87311	79-033-88	Drive Motor Green Chop	2	2
43	16011-A1	79-034-88	Wire Ring	2	2
44	1/4x5/16	79-035-88	Rectangle Key	2	2
45	87312	79-036-88	Shim (as needed)		
46	87309	79-038-88	White Motor Thrust Bearing	2	2
47		94-050-88	Hub Bolt Spacer	2	2

MODEL 8827 TWIN
BASKET FRAME, GUARDS
AND STRIPPER BARS
(3 and 5 Function)

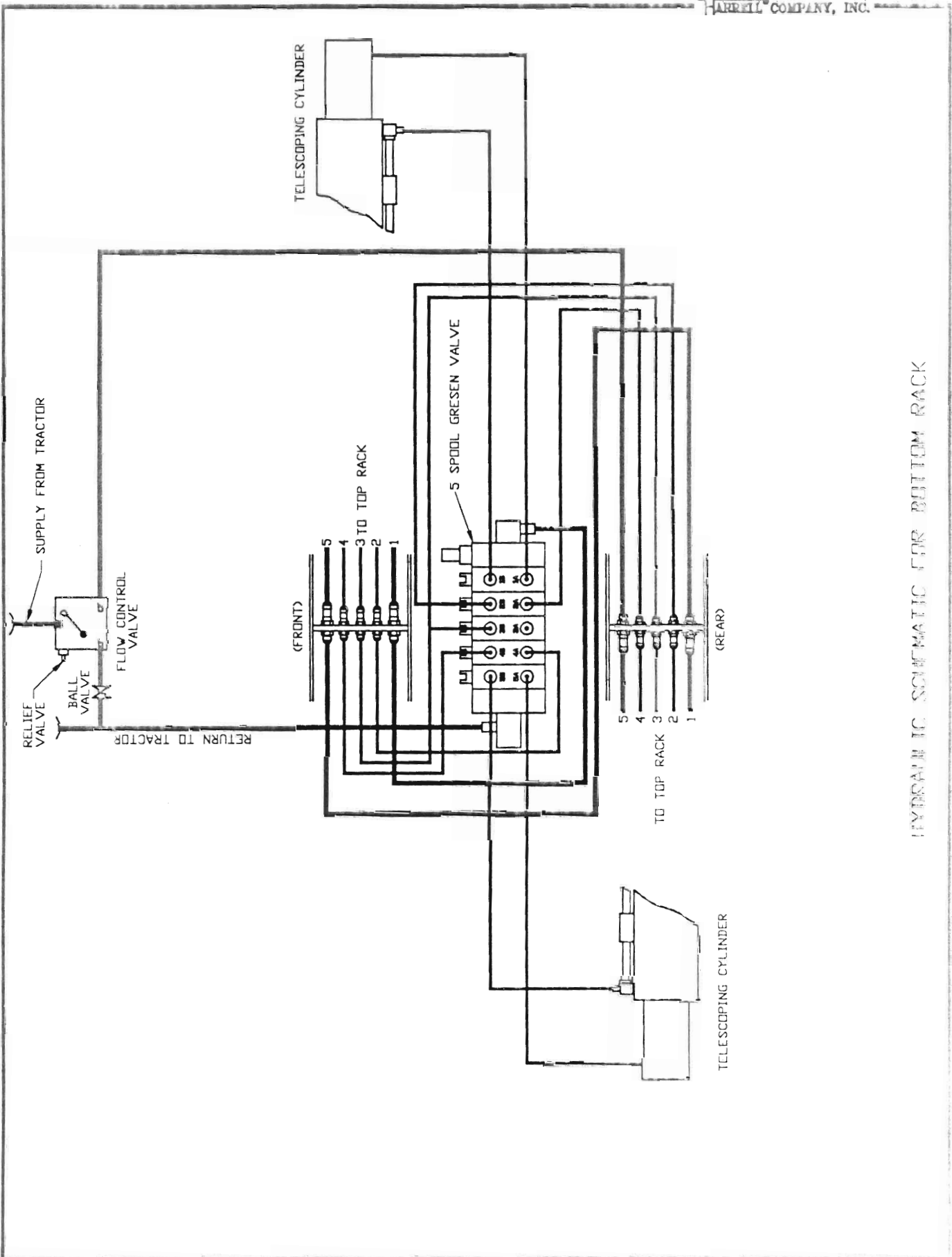


No. Req'd.

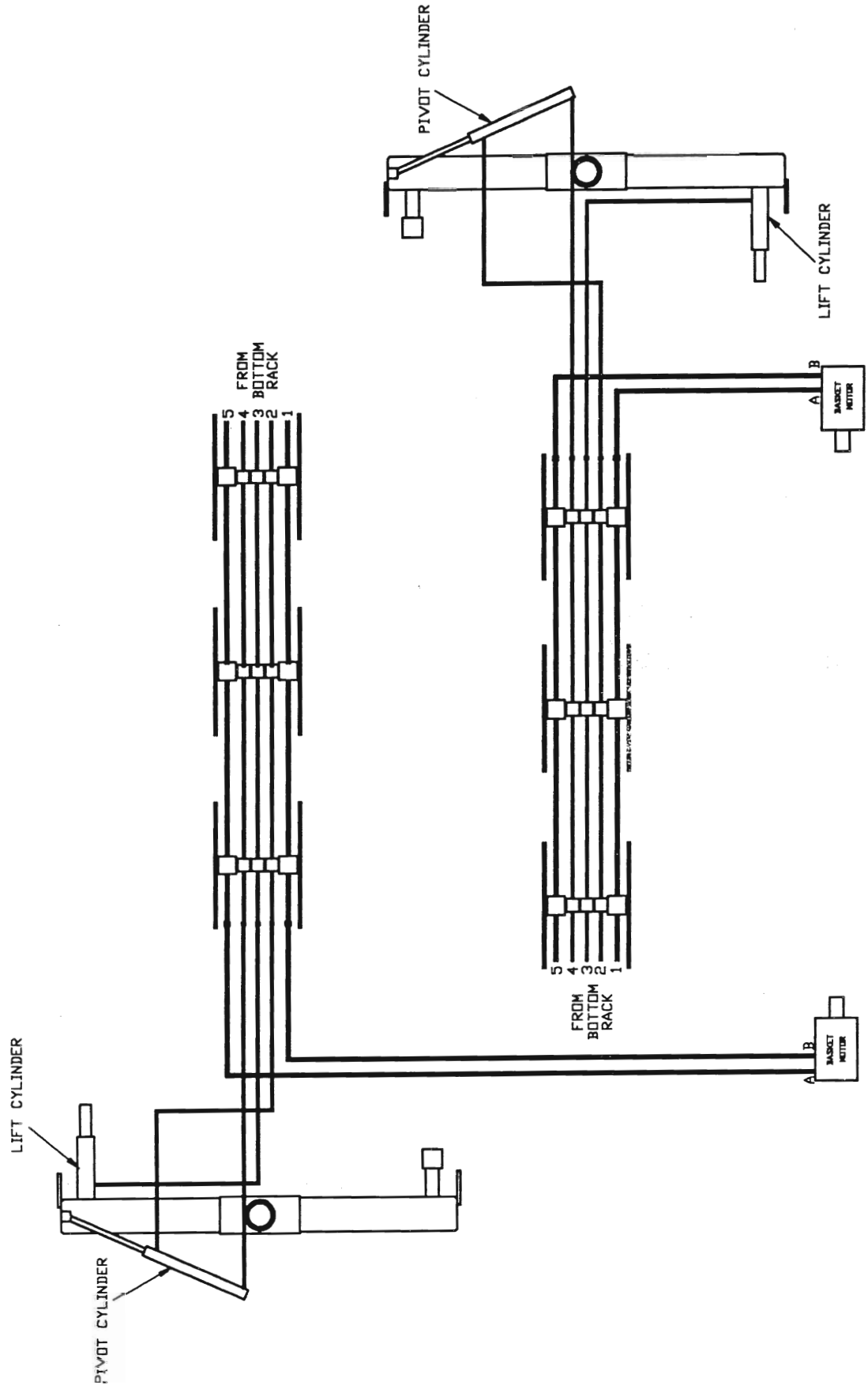
Ref. No.	Allen No.	Harrell No.	Description	3 Function	5 Function
1	78242	85-034-88	Left Hand Basket Frame	1	1
2	78342	85-035-88	Right Hand Basket Frame	1	1
3	78016	92-005-88	Left Hand Front Guard	1	1
4	78116	92-008-88	Right Hand Rear Guard	1	1
5		2814-1616	Cap Screw 1/2UNC x 1 3/4"	8	8
6		1702-1600	Flat Washer 1/2" SAE	8	8
7		1412-1600	Hex Lock Nut 1/2UNC	8	8
8	82404	85-036-88	Left Hand Guard Brace	1	1
9	82405	85-037-88	Right Hand Guard Brace	1	1
10		0514-1220	Carriage Bolt 3/8UNC x 2"	2	2
11		2814-1214	Cap Screw 3/8UNC x 1 1/2"	2	2
12		1702-1200	Flat Washer 3/8" SAE	4	4
13		1412-1200	Hex Lock Nut 3/8UNC	4	4
14		93-081-88	Flat Spacer	4	4
15	78017	92-009-88	Left Hand Rear Guard	1	1
16	78117	92-006-88	Right Hand Front Guard	1	1
17	78018	96-023-88	Left Hand Stripper Bar	11	11
18	78118	96-021-88	Right Hand Stripper Bar	11	11
19		1412-2000	Hex Lock Nut 5/8UNC	44	44
20		1702-2000	Flat Washer 5/8" SAE	44	44
21	81471	72-004-88	Stripper Bar Support Group (Includes Items 22-25)	2	2
22	81472	93-035-88	Stripper Reinforcing Bar	2	2
23	77033	79-076-88	'U' Bolt (large)	2	2
24	77034	79-077-88	'U' Bolt (small)	22	22
25		1412-1000	Lock Nuts 5/16" NC	4	4
26		1412-0800	Hex Lock Nut 1/4UNC	44	44
27		94-021-88	Spacer Bushing	5	5



HYDRAULIC SCHEMATIC FOR BOTTOM RACK

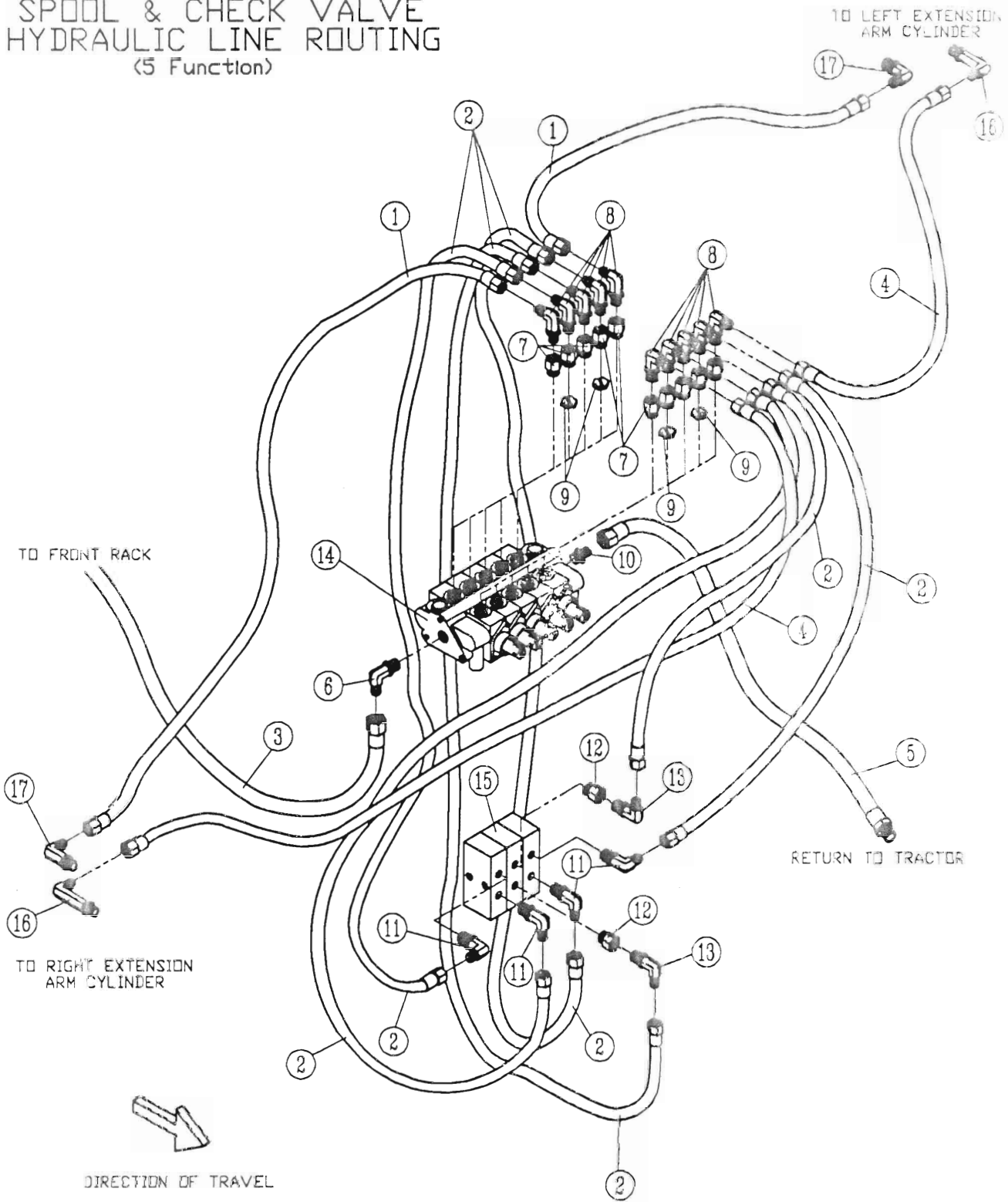


HYDRAULIC SCHEMATIC FOR BOTTOM RACK



HYDRAULIC SCHEMATIC FOR TOP RACK

MODEL 8827 TWIN SPOOL & CHECK VALVE HYDRAULIC LINE ROUTING (5 Function)



Spool & Check Valve Hydraulic Line Routing

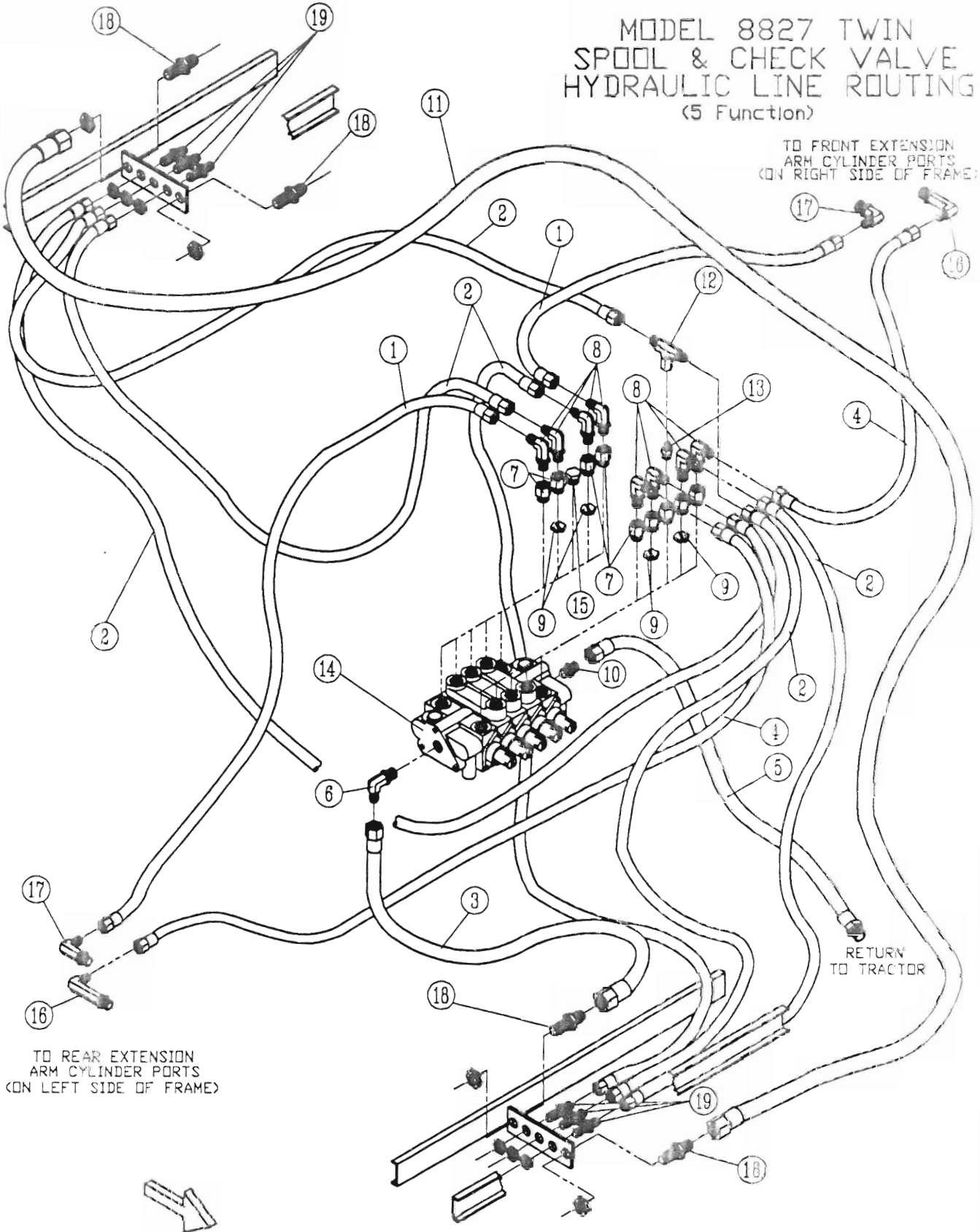
(5 Function)

No. Req'd.

Ref. No.	Allen No.	Harrell No.	Description	3 Function	5 Function
1	87650	79-043-88	Hose Ass'y. 1/4" x 44' - AR 14 (1993 & earlier)		2
2		79-101-88	Hose Ass'y. 1/4" x 27' - AR 12		6
3	87612	79-055-88	Hose Ass'y. 1/2" x 42' - AR 4		1
4	87608	79-044-88	Hose Ass'y. 1/4" x 46' - AR 15 (1993 & earlier)		2
5		79-102-88	Hose Ass'y. 1/2" x 30' - AR 8		1
6		79-094-88	Straight Thread 90° Elbow		1
7	87611	79-054-88	Straight Thread Reducer		10
8	2062-4-49	79-052-88	Straight Thread 90° Elbow		10
9		77-058-88	Restrictor (.032)		4
10		79-050-88	O-Ring Boss Adapter		1
11		79-095-88	JIC 90° Elbow		4
12		79-096-88	JIC Straight Adapter		2
13		79-097-88	90° JIC Swivel Elbow		2
14		79-051-88	Prince 5 Spool Valve		1
	V12-4-4LD-4LD	79-103-88	Gresen 5 Spool Valve		1
15		79-201-28	Check Valve		3
16	202414-4-49	79-009-88	Elbow 90° Pipe To JIC (X-Long)		2
17	2025-4-49	77-041-06	Elbow 90° Pipe To JIC		2

MODEL 8827 TWIN SPOOL & CHECK VALVE HYDRAULIC LINE ROUTING (5 Function)

TO FRONT EXTENSION
ARM CYLINDER PORTS
(ON RIGHT SIDE OF FRAME)



TO REAR EXTENSION
ARM CYLINDER PORTS
(ON LEFT SIDE OF FRAME)

RETURN
TO TRACTOR


DIRECTION OF TRAVEL

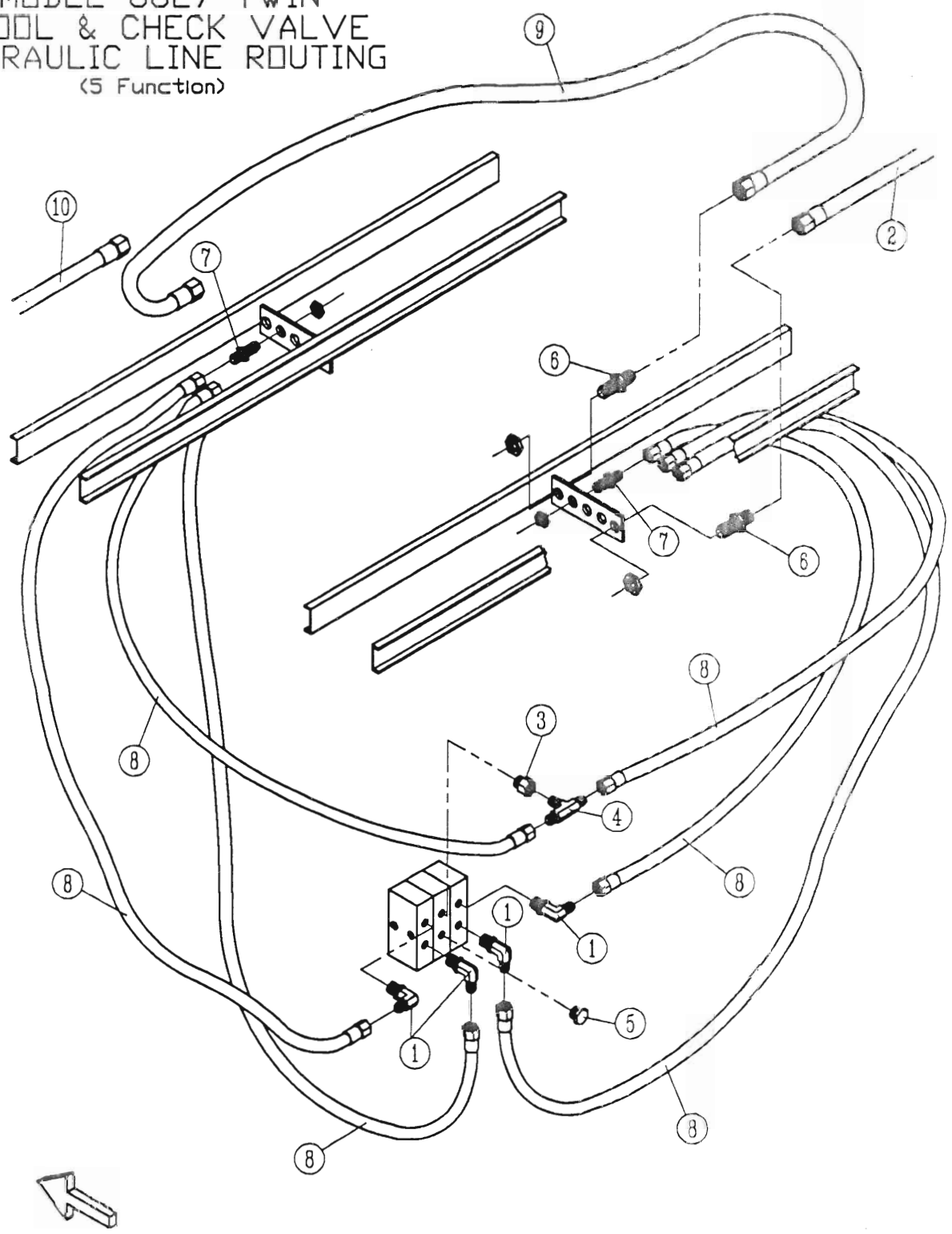
Spool & Check Valve Hydraulic Line Routing

(5 Function)

No. Req'd.

Ref. No.	Allen No.	Harrell No.	Description	No. Req'd.	
				3 Function	5 Function
1	87650	79-144-88	Hose Ass'y. 1/4" x 56' - AR 19		2
2		79-101-88	Hose Ass'y. 1/4" x 27' - AR 12		6
3	87612	79-055-88	Hose Ass'y. 1/2" x 42' - AR 4		1
4	87608	79-145-88	Hose Ass'y. 1/4" x 58' - AR 20		2
5		79-102-88	Hose Ass'y. 1/2" x 30' - AR 8		1
6		79-094-88	Straight Thread 90° Elbow		1
7	87611	79-054-88	Straight Thread Reducer		9
8	2062-4-49	79-052-88	Straight Thread 90° Elbow		8
9		77-058-88	Restrictor (.032)		4
10		79-050-88	O-Ring Boss Adapter		1
11	87648	79-046-88	Hose Ass'y. 1/2 x 62 - AR-5		1
12		79-099-88	JIC Swivel Branch Tee		1
13		79-124-88	Straight Thread Connector		1
14	V12-4-4LQ-4LQ	79-103-88	Gresen 5 Spool Valve		1
15		79-029-85	Plug		1
16	202414-4-49	79-009-88	Elbow 90° Pipe To JIC (X-Long)		2
17	2025-4-49	77-041-06	Elbow 90° Pipe To JIC		2
18	2041-8-89	79-083-88	#8 Bulkhead Fitting		4
19	2041-4-44	79-013-88	#4 Bulkhead Fitting		6

MODEL 8827 TWIN SPOOL & CHECK VALVE HYDRAULIC LINE ROUTING (5 Function)



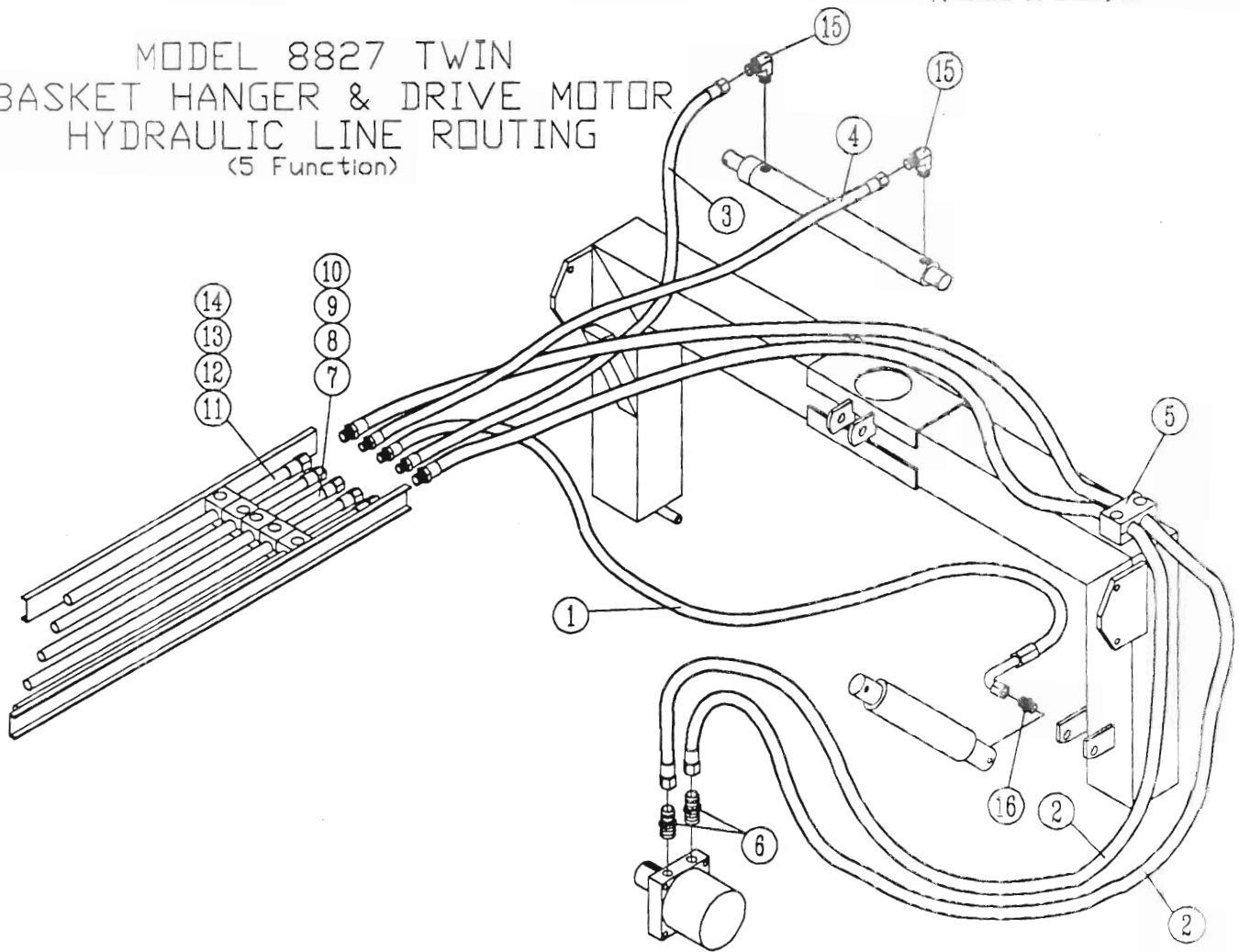
Spool & Check Valve Hydraulic Line Routing

(5 Function)

No. Req'd.

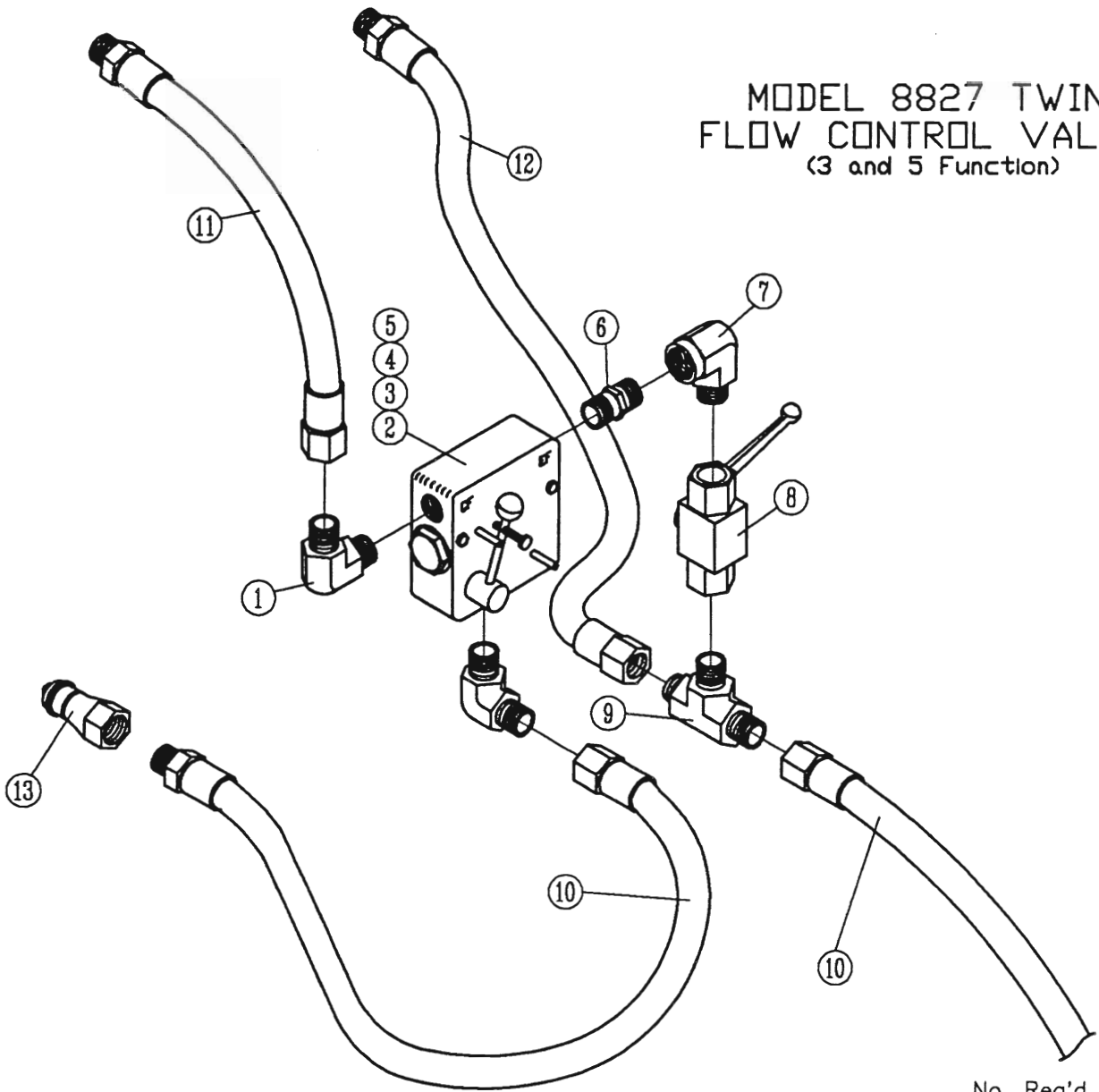
Ref. No.	Allen No.	Harrell No.	Description	3 Function	5 Function
1		79-095-88	JIC 90° Adapter		4
2	87612	79-055-88	Hose Ass'y. 1/2" x 42" - AR-4		1
3		79-096-88	JIC Straight Adapter		1
4		79-099-88	JIC Swivel Branch Tee		1
5		79-100-88	Straight Thread Plug		1
6	2041-8-89	79-083-88	#8 Bulkhead Fitting		4
7	2041-4-44	79-013-88	#6 Bulkhead Fitting		6
8	87647	79-047-88	Hose Ass'y. 1/4" x 27" - AR-13		6
9	87648	79-046-88	Hose Ass'y. 1/2" x 62" - AR-5		1
10	87610	79-049-88	Hose Ass'y. 1/2" x 41" - AR-9		1

MODEL 8827 TWIN
BASKET HANGER & DRIVE MOTOR
HYDRAULIC LINE ROUTING
(5 Function)



Ref. No.	Allen No.	Harrell No.	Description	3 Function	5 Function
1	87600	79-062-88	Hose Ass'y. 60' - AR-16 4FJIC Swivel x Short 90 4JIC	2	2
2	87658	79-061-88	Hose Ass'y. 95' - AR-6 8FJIC Swivel x 8MJIC	4	4
3	87603	79-065-88	Hose Ass'y. 32' - AR-11 4FJIC Swivel x 6MJIC		2
4	87602	79-064-88	Hose Ass'y. 42' - AR-10 4FJIC Swivel x 6MJIC		2
5		79-108-88	3/4" Twin Hose Clamp	2	2
6	202702-10-89	79-050-88	"D" Ring Boss to 37° Flare	4	4
7	81155	84-021-88	Tubing Ass'y. 3/8" x 75 1/2'	2	6
8		94-027-88	Tubing 3/8" x 75 1/2'	2	2
9		77-060-88	Flareless Tube End Cap	4	12
10		77-061-88	Ferrule 3/8" O.D. Tubing	4	12
11	81166	84-022-88	Tubing Ass'y. 1/2" x 75 1/2'	4	4
12		94-028-88	Tubing 1/2" x 75 1/2'	4	4
13		77-062-88	Flareless Tube End Cap	4	12
14		77-063-88	Ferrule 1/2" O.D. Tubing	8	12
15		79-052-88	Straight Thread Elbow		4
16		79-121-88	Straight Thread Adapter	2	2

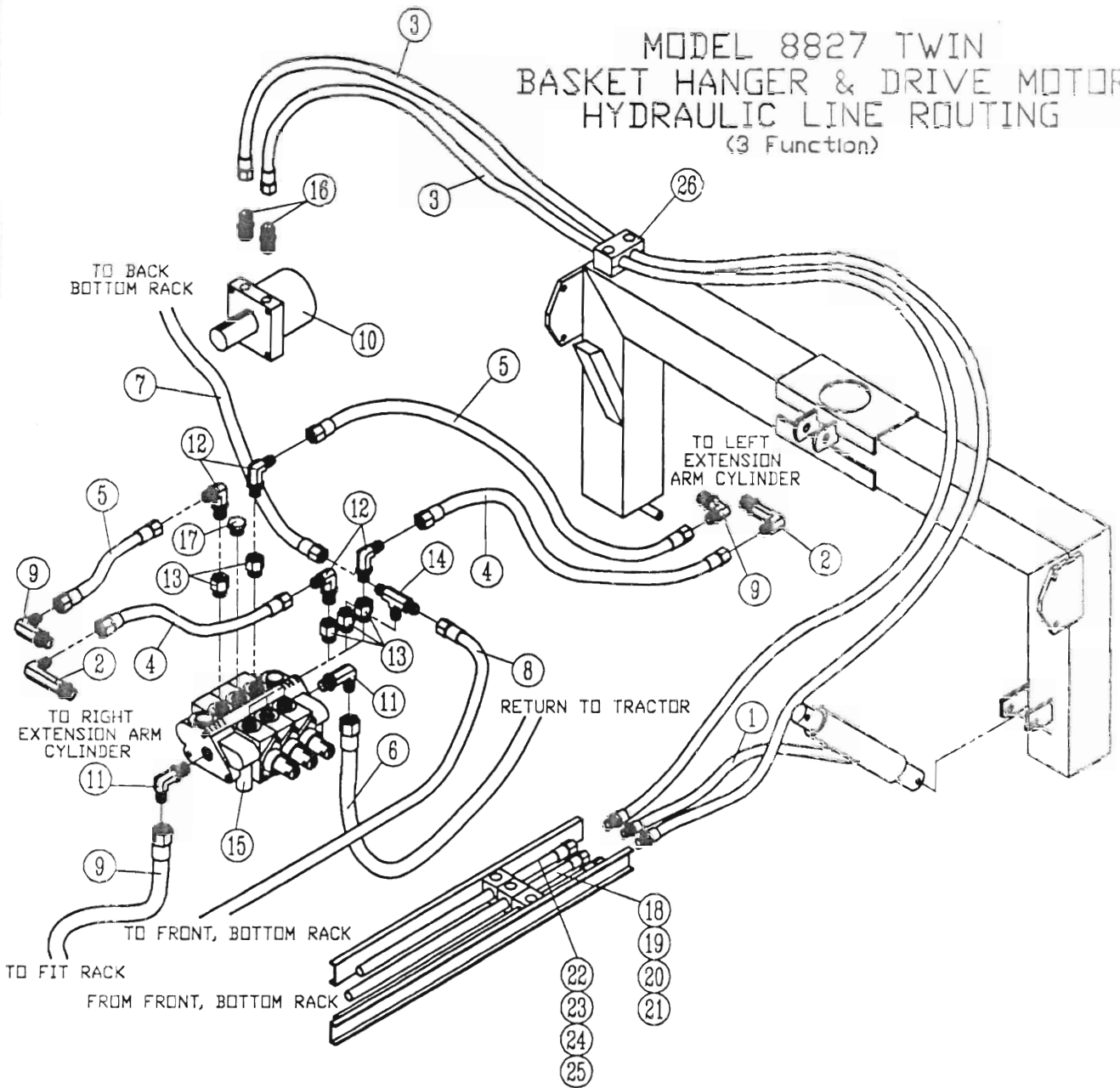
MODEL 8827 TWIN
FLOW CONTROL VALVE
(3 and 5 Function)



No. Req'd.

Ref. No.	Allen No.	Harrell No.	Description	3 Function	5 Function
1	2024-8-89	79-070-88	Male Elbow	2	2
2	76260	79-042-88	Flow Control Valve	1	1
3		1412-0800	Hex Lock Nut 1/4UNC	2	2
4		2816-0824	Hex Head Cap Screw 1/4UNC x 2 1/2"	2	2
5		1702-0800	Flat Washer 1/4" SAE	2	2
6		79-068-38	Pipe Nipple	1	1
7	2089-8-89	79-069-88	Street Elbow	1	1
8	444YB1/2	79-072-88	Ball Valve	1	1
9		79-112-88	Male Branch Tee	1	1
10	87660	79-068-88	Hose Ass'y. 1/2" x 66" - AR-1	2	2
11	87607	79-071-88	Hose Ass'y. 1/2" x 20" - AR-2	1	1
12	87604	79-066-88	Hose Ass'y. 1/2" x 18" - AR-3	1	1
13		79-212-36	Quick Disconnect Adapter	2	2

MODEL 8827 TWIN BASKET HANGER & DRIVE MOTOR HYDRAULIC LINE ROUTING (3 Function)



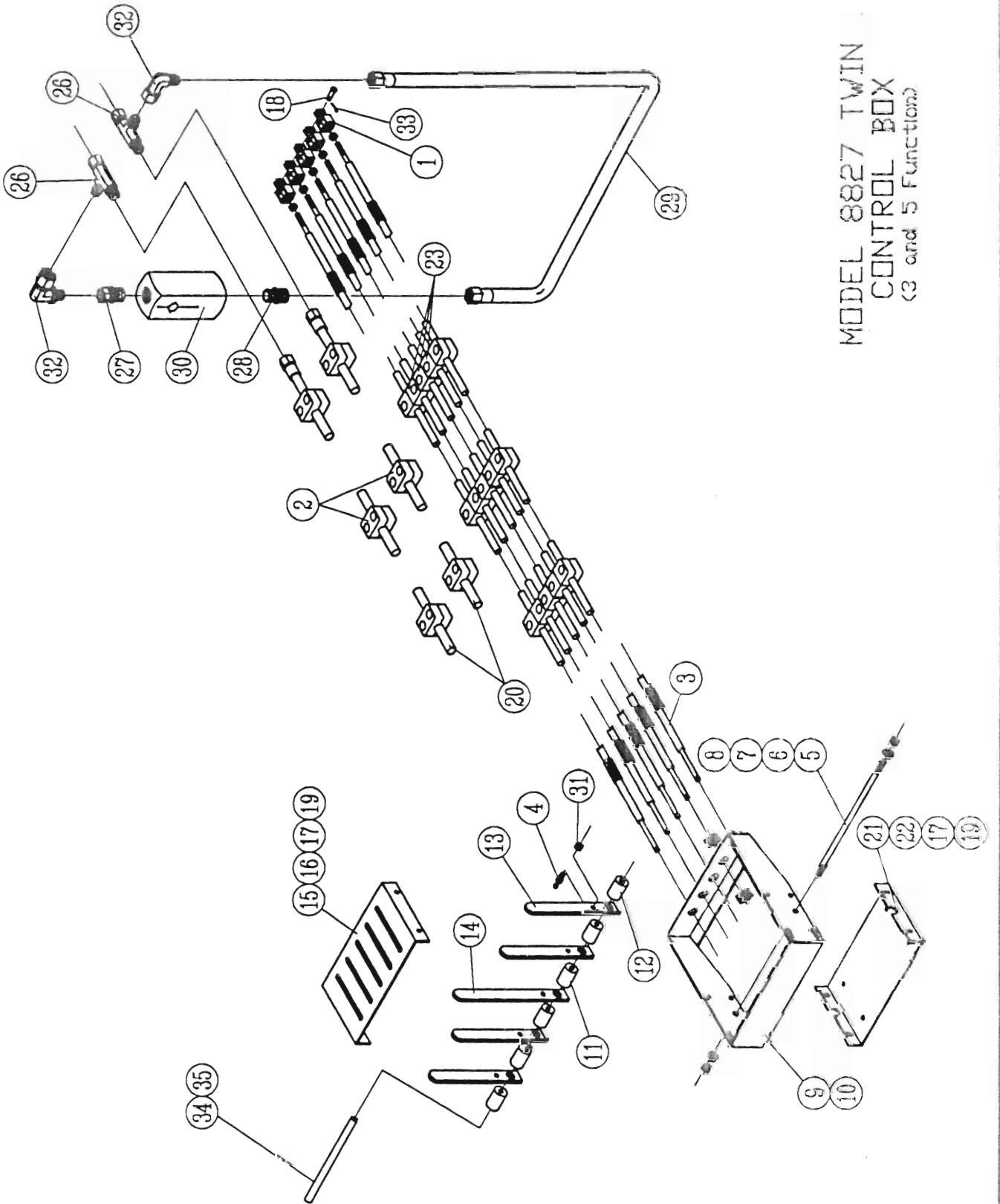
Basket Hanger & Drive Motor Hydraulic Line Routing

(3 Function)

No. Req'd.

Ref. No.	Allen No.	Harrell No.	Description	3 Function	5 Function
1	87600	79-062-88	Hose Ass'y. 60" - AR-16 4FJIC Swivel x Short 90 4JIC	2	
2	202414-4-49	79-009-88	Elbow 90° Pipe To JIC (X-Long)	2	
3	87658	79-061-88	Hose Ass'y. 95" - AR-6 8FJIC Swivel x 8MJIC	4	
4	87608-A	79-145-88	Hose Ass'y. 56" 4FJIC x 4FJIC	2	
5	87650-A	79-144-88	Hose Ass'y. 57" 4FJIC Swivel x Long 90° 4JIC	2	
6	87612	79-055-88	Hose Ass'y. 55" 8FJIC Swivel x 8FJIC Swivel	1	
7	87610	79-049-88	Hose Ass'y. 41" - AR-9 8FJIC Swivel x 8MJIC Swivel	1	
8	87647	79-101-88	Hose Ass'y. 27" - AR-12 4FJIC Swivel x 4MJIC	2	
9	2025-4-49	77-041-06	Elbow 90° Pipe To JIC	2	
10	81433	79-032-88	Hydraulic Drive Motor	2	
11		79-094-88	Straight Thread Adapter	2	
12	2062-4-49	79-052-88	Straight Thread 90° Elbow	4	
13	87611	79-054-88	Straight Thread Reducer	5	
14	203003-4-49	79-099-88	JIC Swivel Branch Tee	1	
15	V124-4LD-4-LHD	79-030-88	Gresen 3 Spool Valve	1	
16	202702-10-89	79-050-88	□ Ring Boss to 37° Flare	2	
17		79-100-88	Straight Thread Plug	1	
18	81155	84-021-88	Tubing Ass'y. 3/8" x 75 1/2"	2	
19		94-027-88	Tubing 3/8" x 75 1/2"	2	
20		77-060-88	Flareless Tube End Cap	4	
21		77-061-88	Ferule 3/8" O.D. Tubing	4	
22	81166	84-022-88	Tubing Ass'y. 1/2" x 75 1/2"	4	
23		94-028-88	Tubing 1/2" x 75 1/2"	4	
24		77-062-88	Flareless Tube End Cap	8	
25		77-063-88	Ferule 1/2" O.D. Tubing	8	
26		79-108-88	3/4" Twin Hose Clamp	2	

MODEL 8827 TWIN
CONTROL BOX
(3 and 5 Function)

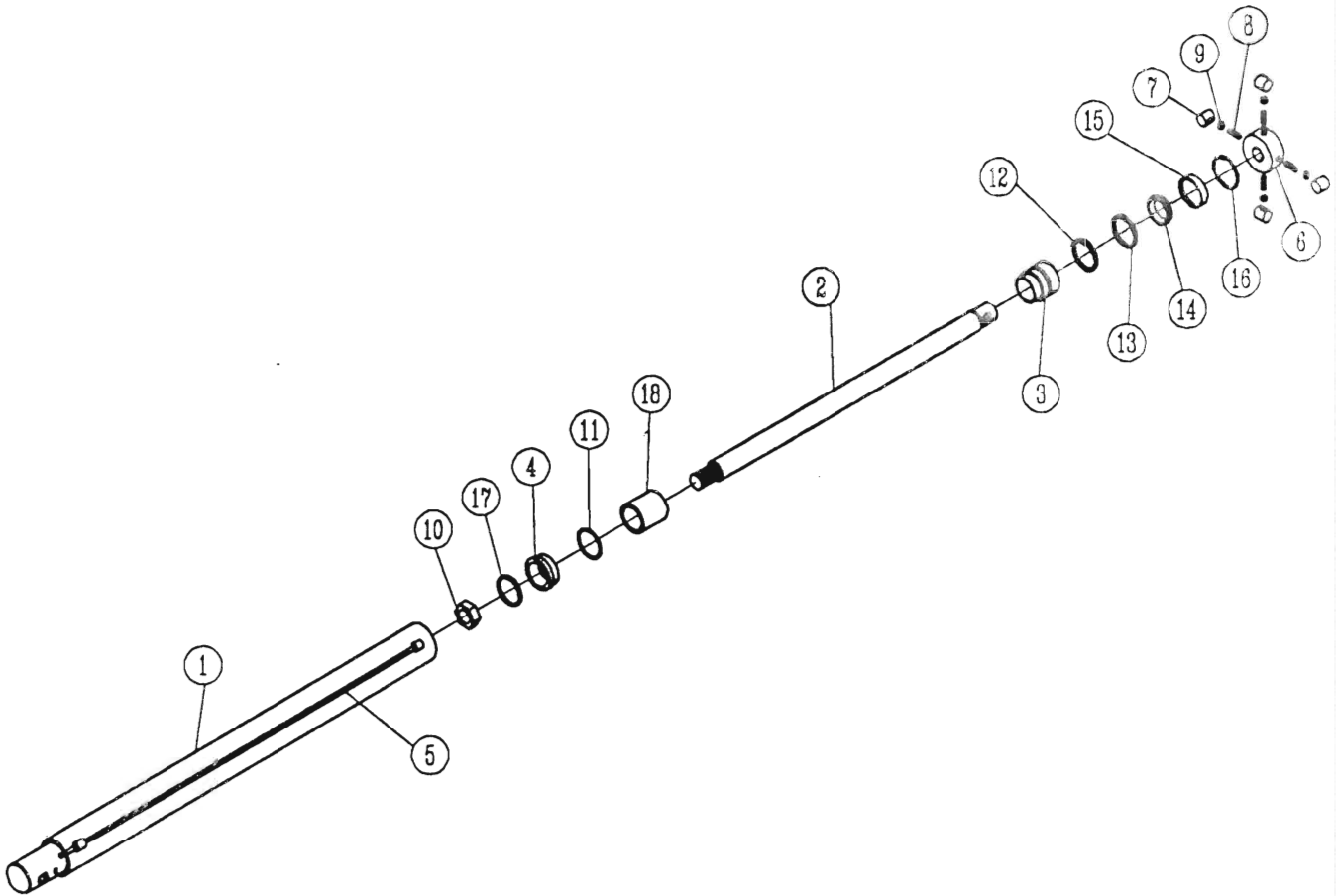


Control Box Assembly (3 and 5 Function)

Ref. No.	Allen No.	Harrell No.	Description	No. Req'd.	
				3 Function	5 Function
1		79-073-88	Morse Terminal Eyes	3	5
2		79-118-88	Stacking Kit	6	6
3	40BDD38011	79-074-88	Morse Cable	3	5
4	A029104	79-075-88	Ball Joints	3	5
5	77117	96-026-88	Lever Pivot Shaft	1	
6	77118	96-025-88	Lever Pivot Shaft		1
7		1702-1200	Flat Washers 3/8" SAE	2	2
8		1412-1200	Hex Lock Nut 3/8UNC	2	2
9	77119	85-038-88	Control Box (3 Spool)	1	
10	77120	85-005-88	Control Box (5 Spool)		1
11	77121	96-018-88	Spacer (Pre - 1994 models)	4	6
		96-033-88	Spacer (1994)	3	5
12	77122	96-017-88	Spacer	1	1
13	77123	98-046-88	Handle	2	4
14	77124	98-045-88	Handle	1	1
15	77125	93-072-88	Cover	1	
16	77126	93-045-88	Cover		1
17		1702-0800	Flat Washers 1/4" SAE	8	8
18		79-135-88	Clevis Pin	3	5
19		2814-0804	Hex Bolt 1/4" x 1/2" NC	8	8
20	77130	84-018-88	Hydraulic Tube Ass'y. 1/2" x 92"	2	2
21	77137	93-071-88	Bottom Plate	1	
22	77138	93-041-88	Bottom Plate		1
23		79-012-88	Tubing Clamp 1/2"	15	21
24	77131	84-006-88	Complete Control Box Ass'y. (5 Spool) (inc. items 1&2, 4-22 ex. 5,9,15&21)		1
25	77133	84-007-88	Complete Control Box Ass'y. (3 Spool) (inc. items 1&2, 4-21 ex. 6,10&16)	1	
26		77-004-38	Female Swivel Run Tee	2	2
27		79-120-88	Swivel Connector	1	1
28		77-047-06	Male Connector	1	1
29		84-029-88	Tube Assembly Excess Flow	1	1
30		79-066-38	Flow Control Valve	1	1
31		0832-0800	Hex Nut 1/4UNF	9	15
32		77-058-06	Swivel 90° Elbow	2	2
33		79-136-06	Cotter Key	3	5
34		94-048-88	Control Box Bushing, 3-Spool (1994)	1	
35		94-049-88	Control Box Bushing, 5-Spool (1994)		1

MAIN CYLINDER

79-007-88 - 1992
& before
79-113-88 - 1993



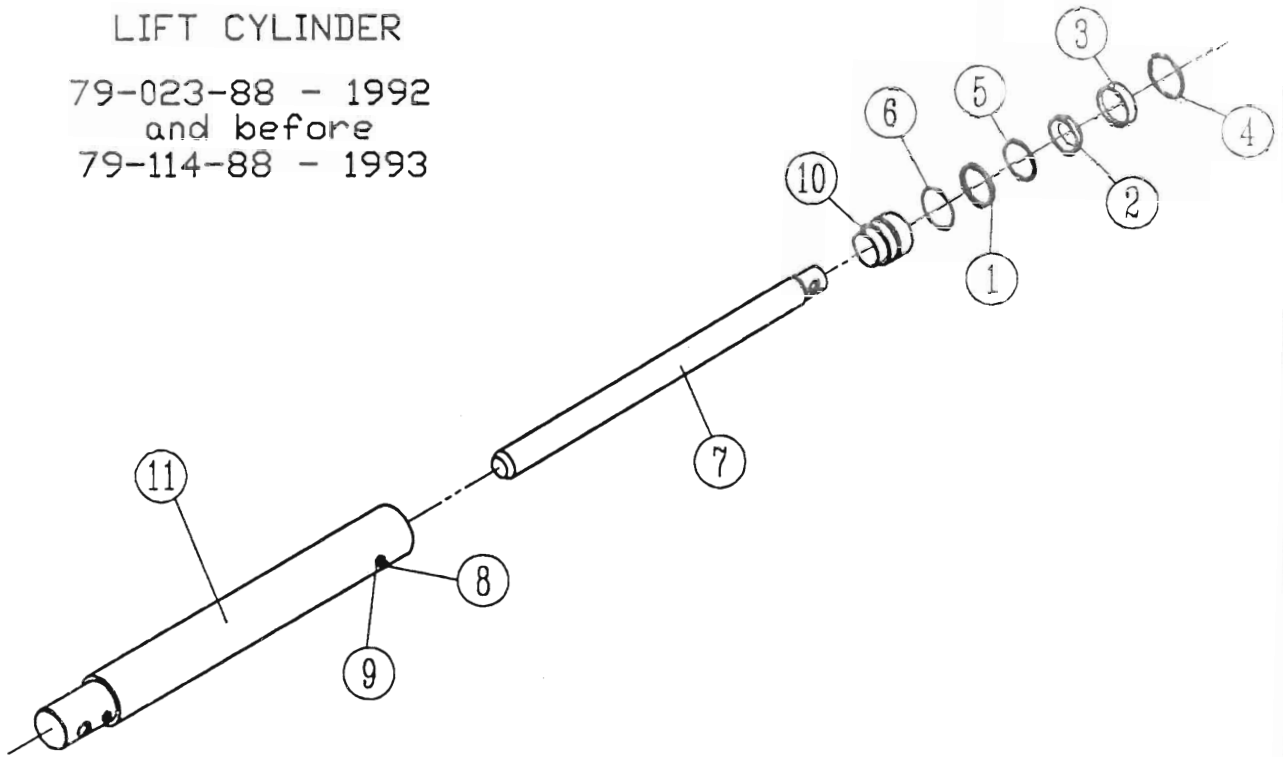
Main Cylinder

79-007-88 - 1992
& before
79-114-88 - 1993

Ref. No.	Allen No.	Harrell No.	Description	No. Req'd.	
				3 Function	5 Function
1	81526	77-004-88	Barrell Assy. 1992 & before	1	1
1		77-102-88	Barrell Assy. 1993	1	1
2	81528	77-008-88	Piston Rod 1992 & before	1	1
2		77-103-88	Piston Rod 1993	1	1
3	82563	77-010-88	Seal Retainer Gland 1992 & before	1	1
3		77-104-88	Piston Gland 1993	1	1
4	81540	77-006-88	Piston Head 1992 & before	1	1
4		77-105-88	Piston 1993	1	1
5	81546	77-003-88	Manifold Tube	1	1
6	82562	77-015-88	Cylinder Cap (all)	1	1
7	82103	79-006-88	Teflon Bushing (all)	4	4
8	82104	79-011-88	Stud 1/2"-13 UNC all thread (all)	4	4
9		1012-1600	Jam Nut 1/2 13 UNC	4	4
10	81529	77-005-88	Locknut 7/8-14 UNF 1992 & before	1	1
10		77-106-88	Locknut 1993	1	1
11	81541	77-107-88	Piston Seal 1992 & before	1	1
11		77-084-88	O-Ring 1993	1	1
12	81532	77-101-88	Static Seal 1992 & before	1	1
12		77-031-88	O-Ring 1993	1	1
13	81531	77-011-88	Static Seal 1992 & before	1	1
13		77-012-88	Backup Washer 1993	1	1
14	81533	77-108-88	Rod Seal 1992 & before	1	1
14		77-009-88	U-Cup 1993	1	1
15	81534	77-109-88	Rod Wiper 1992 & before	1	1
15		77-013-88	Wiper 1993	1	1
16	81553	77-110-88	Snap Ring 1992 & before (all)	1	1
N.S.		77-007-88	Crown Seal 1993	1	1
17		77-083-88	Bearing Ring	1	1
18		77-081-88	Spacer	1	1
N.S.	81550	72-001-88	Seal Kit 1992 & before (Consist of Items 13-16)	1	1
N.S.		72-011-88	Seal Kit 1993 (consist of items 13-18)	1	1

LIFT CYLINDER

79-023-88 - 1992
and before
79-114-88 - 1993

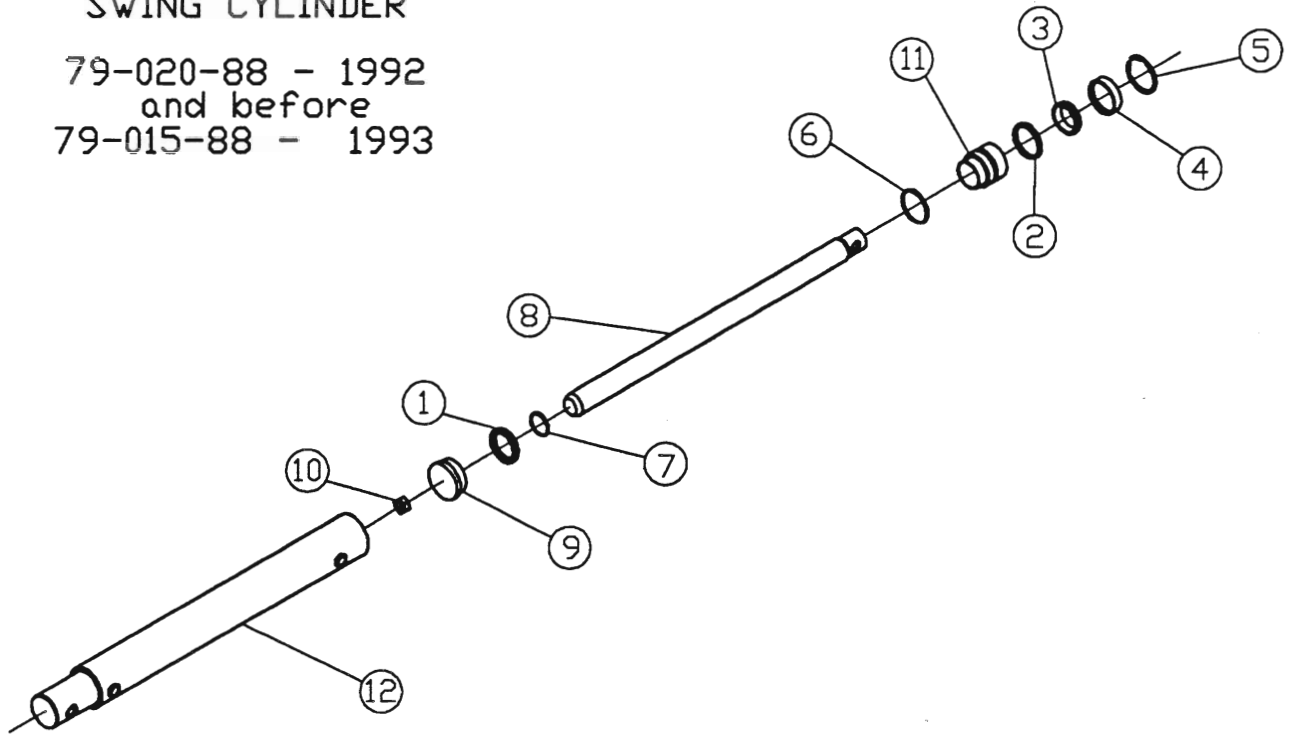


No. Req'd.

Ref. No.	Allen No.	Harrell No.	Description	No. Req'd.	
				3 Function	5 Function
1		77-031-88	Static Ring 1992 and before	1	1
1	81531	77-011-88	Back Up Washer 1993	1	1
2	87316	77-099-88	Rod Seal 1992 and before	1	1
2		77-039-88	U-Cup 1993	1	1
3	87317	77-100-88	Wiper 1992 and before	1	1
3		77-038-88	Wiper 1993	1	1
4	81553	77-014-88	Snap Ring (all)	1	1
5	81532	77-101-88	Backup 'O' Ring 1992 and before	1	1
5		77-012-88	Backup 'O' Ring 1993	1	1
6		77-031-88	O-Ring 1993	1	1
7	87301	77-036-88	Piston Rod 1992 and before	1	1
7		77-096-88	Piston Rod 1993	1	1
8	51554	77-016-88	5/16-18NC x 5/8 Long Stud	1	1
9		1412-1000	5/16-18NC Steel Lock Nut	1	1
10	87302	77-037-88	Piston Gland 1992 and before	1	1
10		77-097-88	Piston Gland 1993	1	1
11	87300	77-035-88	Cylinder Barrel 1992 and before	1	1
11		77-095-88	Butt and Tube Assy. 1993	1	1
N.S.	87315	72-003-88	Seal Kit 1992 and before (consist of items 1-5)	1	1
N.S.		72-010-88	Seal Kit 1993 (consist of items 1-6)	1	1

SWING CYLINDER

79-020-88 - 1992
and before
79-015-88 - 1993



Ref. No.	Allen No.	Harrell No.	Description	No. Req'd.	
				3 Function	5 Function
1	81505	77-091-88	Piston Seal 1992 and before		2
1		77-028-88	Crown Seal 1993		2
2	81509	77-092-88	Static Seal 1992 and before		2
2		77-087-88	BU-Washer 1993		2
3	81510	77-093-88	Rod Seal 1992 and before		2
3		77-032-88	U-Cup 1993		2
4	81511	77-094-88	Wiper 1992 and before		2
4		77-033-88	Wiper 1993		2
5	81512	77-034-88	Snap Ring (all)		2
6		77-098-88	□-Ring		2
7		77-086-88	□-Ring		2
8	81503	77-029-88	Piston Shaft 1992 and before		2
8		77-089-88	Piston Shaft 1993		2
9		96-028-88	Plug Piston Stop		2
10		77-085-88	Locknut 5/8" 18 UNF 1993		2
11	81508	77-030-88	Piston Gland 1992 and before		2
11		77-090-88	Piston Gland 1993		2
12	81502	77-027-88	Cylinder Barrell 1992 and before		2
12		77-088-88	Cylinder Barrell 1993		2
N.S.	81551	72-002-88	Seal Kit, 1992 and before (consist of items 1-5)		2
N.S.		72-009-88	Seal Kit, 1993 (consist of items 1-7)		2

Gauge Wheel Assembly

Ref. No.	Allen No.	Harrell No.	Description	No. Req'd.	
				3 Function	5 Function
1	87800	84-014-88	Main Frame Consist of (1-5)	1	1
2	77128	2816-1612	Hex Head Bolt 1/2UNC x 1 1/4"	5	5
3		1702-1600	Flat Washers 1/2" SAE	3	3
4		1602-1600	Lock Washers 1/2" SAE	5	5
5		1412-1600	Hex Lock Nut 1/2UNC	5	5
6	77069	77-052-88	Sealed Ball Bearing	2	2
7	82801	84-013-88	Pivot Tube (consist of 7-10)	1	1
8		2816-2450	Hex Head Bolt 3/4UNC x 5"	1	1
9		1702-2400	Flat Washer 3/4" SAE	2	2
10		1412-2400	Hex Lock Nut 3/4UNC	1	1
11	82802	85-020-88	Yoke	1	1
12		79-089-88	Cotter Pin 1/4" x 3"	1	1
13	82803	79-133-88	Tire & Rim Assembly	1	1
14		2816-2480	Hex Head Bolt 3/4UNC x 8"	1	1
15		1702-2400	Flat Washer 3/4" SAE	2	2
16		1412-2400	Hex Lock Nut 3/4UNC	1	1
17	77116	79-088-88	Sealed Ball Bearing	2	2
18	82804	94-032-88	Bronze Bushing	2	2
19	82805	93-081-88	Spacer	1	1
20	76188	79-022-88	Angle Adjusting Arm	1	1
21		79-082-88	Clevis Pin 3/4" x 3 1/4"	2	2
22	87806	84-016-88	Complete Gauge Wheel Ass'y. Right Front & Left Rear	2	2
23	87807	84-017-88	Complete Gauge Wheel Ass'y. Right Rear & Left Front	2	2
24		79-043-06	Hair Pin Clip	2	2
25		2816-2030	Hex Head Bolt 5/8UNC x 3" Gr. 5	1	1
26		1702-2000	Flat Washer 5/8" SAE	2	2
27		1412-2000	Hex Lock Nut 5/8UNC	1	1

ALLEN PART NO.	REF. NO.	PAGE NO.	HARRELL PART NO.	ALLEN PART NO.	REF. NO.	PAGE NO.	HARRELL PART NO.
1/4 X 5/16	44	11	79-035-88	77115	2	3	79-040-88
16011-A1	43	11	79-034-88	77116	17	33	79-088-88
2024-8-89	1	23	79-070-88	77117	5	27	96-025-88
202414-4-49	16	17	79-009-88	77118	6	27	96-024-88
202414-4-49	2	25	79-009-88	77119	9	27	85-038-88
202414-4-49	16	19	79-009-88	77120	10	27	85-005-88
2025-4-49	9	25	77-041-88	77121	11	27	96-018-88
2025-4-49	17	19	77-041-88	77122	12	27	96-017-88
202702-10-89	6	22	79-050-88	77123	13	27	98-046-88
202702-10-89	16	25	79-050-88	77124	14	27	98-045-88
203003-4-49	14	25	79-053-88	77125	15	27	93-072-88
2041-4-49	19	19	79-013-88	77126	16	27	93-045-88
2041-8-89	18	19	79-083-88	77127	1	10	84-004-88
2041-8-89	6	21	79-083-88	77128	2	10	85-033-88
2062-4-49	12	25	79-052-88	77129	7	10	98-035-88
2062-4-49	8	17	79-052-88	77130	20	27	84-018-88
2062-4-49	8	19	79-052-88	77131	24	27	84-006-88
2089-8-89	7	23	79-069-88	77133	25	27	84-007-88
40BDO38011	3	27	79-074-88	77137	21	27	93-071-88
444-YB-1/2	8	23	79-072-88	77138	22	27	93-041-88
76108	3	3	85-026-88	78016	3	12	92-005-88
76188	24	5	79-022-88	78017	15	12	92-006-88
76188	11	8	79-022-88	78018	18	12	96-021-88
76188	20	33	79-022-88	78020	30	10	79-026-88
76190	13	8	98-039-88	78116	4	12	92-008-88
76222	8	5	77-008-02	78117	16	12	92-009-88
76224	7	5	77-021-88	78118	17	12	96-023-88
76260	2	23	79-042-88	78120	31	11	79-030-88
76389	20	3	79-016-88	78242	1	12	85-034-88
76390	22	3	79-012-88	78342	2	12	85-035-88
77014	8	10	77-041-88	81114	5	3	93-018-88
77015	9	10	77-042-88	81125	21	5	79-003-88
77016	11	10	77-044-88	81125	6	3	79-003-88
77017	13	10	77-046-88	81146	15	3	79-001-88
77033	23	12	79-076-88	81155	7	22	84-021-88
77034	24	12	79-077-88	81155	18	25	84-021-88
77035	4	8	79-024-88	81155	19	3	84-021-88
77042	17	8	79-028-88	81166	21	3	84-022-88
77057	15	10	77-048-88	81166	11	22	84-022-88
77058	17	10	77-050-88	81166	22	25	84-022-88
77067	20	10	84-005-88	81170			79-010-88
77069	22	10	77-052-88	81206	10	3	79-043-06
77069	6	33	77-052-88	81207	9	3	79-086-88
77070	23	10	77-053-88	81215	15	5	84-008-88
77071	24	10	77-054-88	81216	2	5	96-004-88
77072	25	10	77-055-88	81217	12	5	77-023-88
77073	26	10	1702-2400	81218	6	5	77-020-88
77074	27	10	77-056-88	81220	5	5	79-019-88
77077	12	10	77-045-88	81222	3	5	77-017-88
77082	28	10	0832-2400	81223	14	5	77-024-88
77085	16	10	77-049-88	81224	9	5	77-040-88
77102-A	10	8	79-025-88	81233	4	5	77-018-88
77111	18	10	85-031-88	81234	13	5	77-026-88

ALLEN PART NO.	REF. NO.	PAGE NO.	HARRELL PART NO.	ALLEN PART NO.	REF. NO.	PAGE NO.	HARRELL PART NO.
81235	10	5	79-017-88	87001	20	5	85-016-88
81236	11	5	79-018-88	87002	27	5	85-017-88
81238	36	6	77-025-88	87003	28	5	85-023-88
81366	17	5	79-079-88	87004	1	8	R-85-014-88
81417	19	10	85-032-88	87004	1	8	L-85-013-88
81433	36	11	79-032-88	87005	14	8	85-030-88
81433	10	25	79-032-88	87006	15	8	85-008-88
81471	21	12	72-004-88	87200	1	5	85-015-88
81472	22	12	93-035-88	87201	26	5	L-85-006-88
81501	16	5	79-020-88	87201	26	5	R-85-007-88
81502	12	31	77-027-88	87300	11	30	77-035-88
81503	8	31	77-029-88	87301	7	30	77-036-88
81505	1	31	77-028-88	87302	10	30	77-037-88
81507	19	5	79-080-88	87304	18	8	79-002-88
81508	11	31	77-030-88	87305	19	8	85-021-88
81509	2	31	77-031-88	87306	29	10	92-003-88
81510	3	31	77-032-88	87307	35	11	79-031-88
81511	4	31	77-033-88	87308	6	10	72-007-88
81512	5	31	77-034-88	87309	46	11	79-038-88
81522	27	8	79-043-06	87310	34	11	79-039-88
81526	1	29	77-004-88	87311	42	11	79-033-88
81528	2	29	77-008-88	87312	45	11	79-036-88
81529	10	29	77-005-88	87315		30	72-003-88
81531	1	30	77-011-88	87316	2	30	77-039-88
81531	13	29	77-011-88	87317	3	30	77-038-88
81532	12	29	77-012-88	87564			79-056-88
81532	5	30	77-012-88	87600	1	25	79-062-88
81533	14	29	77-009-88	87600	1	22	79-062-88
81534	15	29	77-013-88	87602	4	22	79-064-88
81540	4	29	77-006-88	87603	3	22	79-065-88
81541	11	29	77-007-88	87604	12	23	79-066-88
81546	5	29	77-003-88	87607	11	23	79-071-88
81550	19	29	72-001-88	87608	4	17	79-044-88
81551	13	31	72-002-88	87608-A	4	25	79-090-88
81553	16	29	77-014-88	87608-B			79-058-88
81553	4	30	77-014-88	87608-C			79-092-88
81554	8	30	77-016-88	87610	7	25	79-049-88
82100	1	3	85-012-88	87610	10	21	79-049-88
82103	7	29	79-006-88	87611	7	17	79-054-88
82104	8	29	79-011-88	87611	13	25	79-054-88
82404	8	12	85-036-88	87612	2	21	79-055-88
82405	9	12	85-037-88	87612	6	25	79-055-88
82561	4	3	79-007-88	87612	3	17	79-055-88
82562	6	29	77-015-88	87647	8	25	79-047-88
82563	3	29	77-010-88	87647	8	21	79-047-88
82801	7	33	84-013-88	87648	9	21	79-048-88
82802	11	33	85-020-88	87650	1	17	79-048-88
82803	13	33	84-015-88	87650-A	5	25	79-057-88
82804	18	33	94-032-88	87650-B			79-093-88
82805	19	33	93-081-88	87650-C			79-091-88
85009	8	8	85-029-88	87655			79-060-88
85010	9	8	85-011-88	87658	3	25	79-061-88
85124	3	8	79-023-88	87658	2	22	75-061-88

ALLEN PART NO.	REF. NO.	PAGE NO.	HARRELL PART NO.
87660	10	23	79-068-88
87661-A	17	3	79-041-88
87661-B	18	3	79-015-88
87800	1	33	84-014-88
87806	22	33	84-016-88
87807	23	33	84-017-88
A029104	4	27	79-075-88
V12-4-LO-4LO	14	17	79-103-88
V124-4LO-1LHO AT 1500	15	25	79-059-88

