

REVISIONS		DATE	APPROVED
ZONE	REV		
DESCRIPTION			

1

2

3

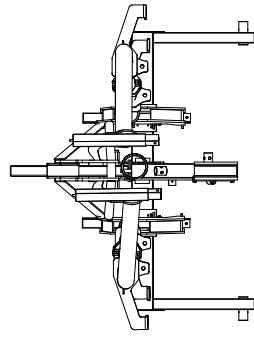
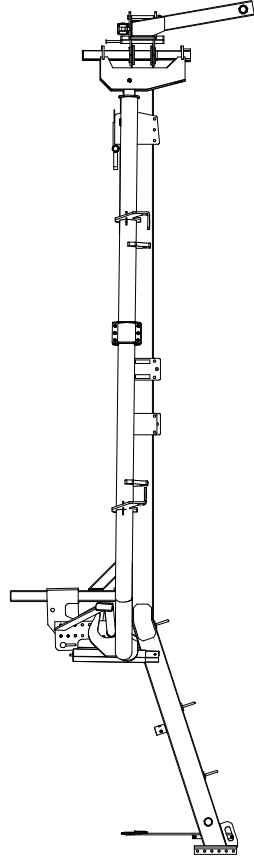
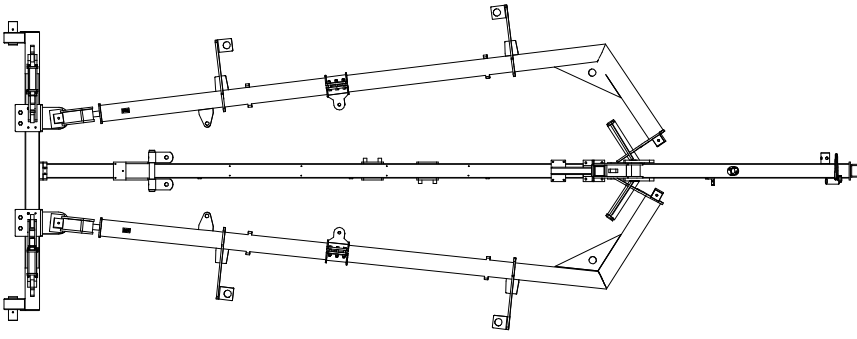
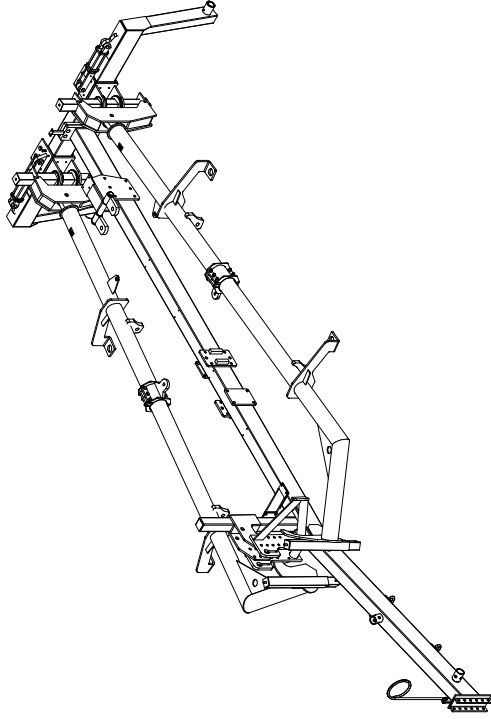
4

D

C

B

A



D

C

B

A

SIZE	DWG. NO.	REV
C	8007 4 VIEW	
SCALE	SHEET	

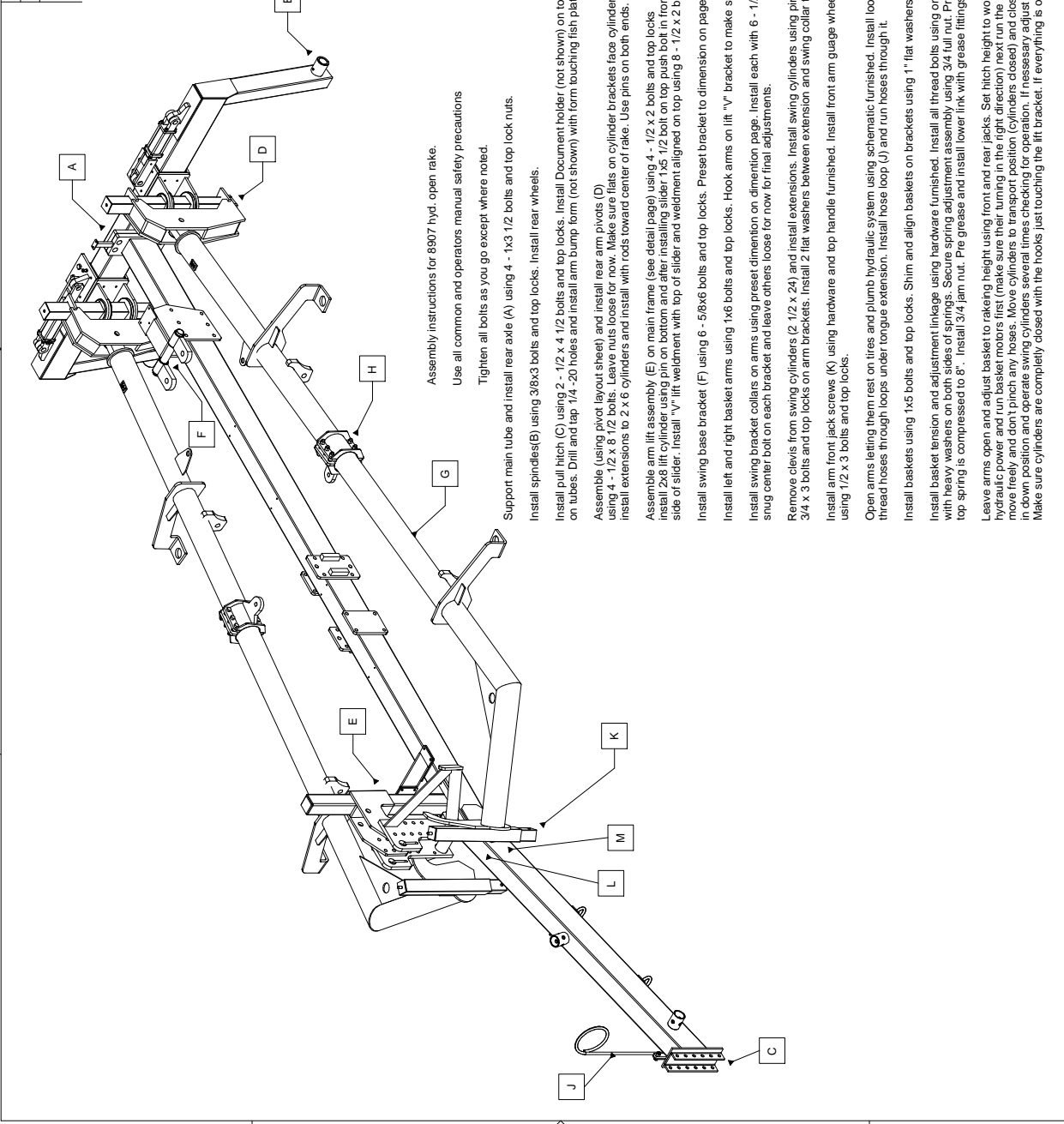
1

2

3

4

REVISIONS			
ZONE	REV	DESCRIPTION	DATE



Assembly instructions for 8907 hyd. open rake.  
Use all common and operators manual safety precautions

Tighten all bolts as you go except where noted.

Support main tube and install rear axle (A) using 4 - 1x3 1/2 bolts and top lock nuts.  
Install spindles(E) using 3/8x3 bolts and top locks. Install rear wheels.

Install pull hitch (C) using 2 - 1/2 x 4 1/2 bolts and top locks. Install Document holder (not shown) on top of axle tube 6" from top join on tubes. Drill and tap .14 - 20 holes and install arm bump form (not shown) with form touching fish plates on main tube.

Assemble (using pivot layout sheet) and install rear arm pivots (D) using 4 - 1/2 x 8 1/2 bolts. Leave nuts loose for now. Make sure flats on cylinder brackets face cylinder. Install extensions to 2 x 6 cylinders and install with rods toward center of rake. Use pins on both ends.

Assemble arm lift assembly (E) on main frame (see detail page) using 4 - 1/2 x 2 bolts and top locks. Install 2x8 lift cylinder using pin on bottom and after installing slider 1x5 1/2 bolt on top push bolt in from cut out side of slider. Install "V" lift weldment with top of slider and weldment aligned on top using 8 - 1/2 x 2 bolts and top locks

Install swing base bracket (F) using 6 - 5/8x6 bolts and top locks. Preset bracket to dimension on page.

Install left and right basket arms using 1x6 bolts and top locks. Hook arms on lift "V" bracket to make sure alignment is correct.

Install swing bracket collars on arms using preset dimension on dimension page. Hook arms on lift "V" bracket to make sure alignment is correct. Snug center bolt on each bracket and leave others loose for now for final adjustments.

Remove clevis from swing cylinders (2 1/2 x 24) and install extensions. Install swing cylinders using pins on rear pivot lugs and 3/4 x 3 bolts and top locks on arm brackets. Install 2 flat washers between extension and swing collar tabs to allow ball socket to pivot.

Install arm front jack screws (K) using hardware and top handle furnished. Install front arm gauge wheels using never seize on posts. Install using 1/2 x 3 bolts and top locks.

Open arms letting them rest on tires and plumb hydraulic system using schematic furnished. Install loom cover on input and return hoses and thread hoses through loops under tongue extension. Install hose loop (J) and run hoses through it.

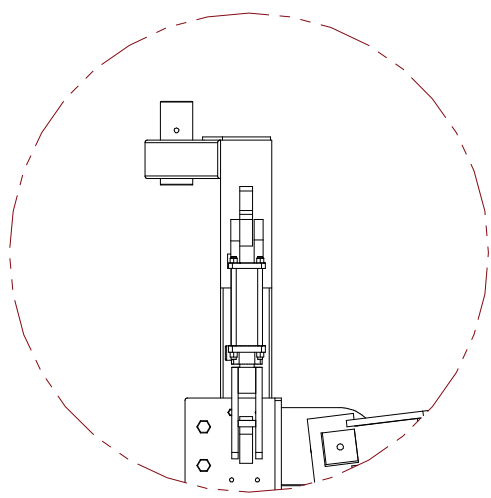
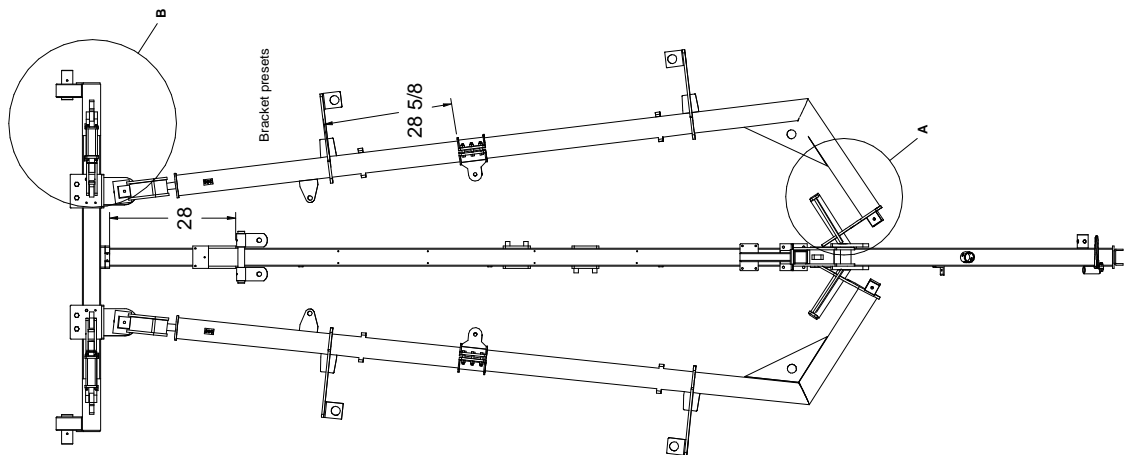
Install baskets using 1x5 bolts and top locks. Shim and align baskets on brackets using 1" flat washers.

Install basket tension and adjustment linkage using hardware furnished. Install all thread bolts using one spring on top of arm, one on bottom with heavy washers on both sides of springs. Secure spring adjustment assembly using 3/4 full nut. Pre tighten tension assembly until the top spring is compressed to 8". Install 3/4 jam nut. Pre grease and install lower link with grease fittings out. Tighten jam nut locking lower links.

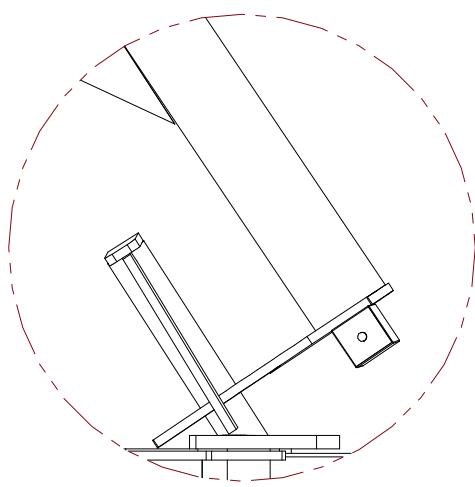
Leave arms open and adjust basket to raking height using front and rear jacks. Set hitch height to working position. Hook input hydraulic hoses to hydraulic lift and rear basket motors first taking care to turn in the right direction. Turn the lift cylinder run the lift cylinder sure the brackets move freely and don't pinch any hoses. Move cylinders to transport position (cylinders closed) and close ball valves. Next run lift cylinder and check for operation leave in down position and operate swing cylinders several times checking for operation. If necessary adjust "V" lift assembly to give clearance to arm hooks. Make sure cylinders are completely closed with the hooks just touching the lift bracket. If everything is ok tighten arm collar bolts. Lift arms and install cylinder stop.

Install all decals and touch up damaged paint.

SIZE	DESCRIPTION	DWG. NO.	REV.
C	8907 Hyd Open Assembly		
SCALE		SHEET	

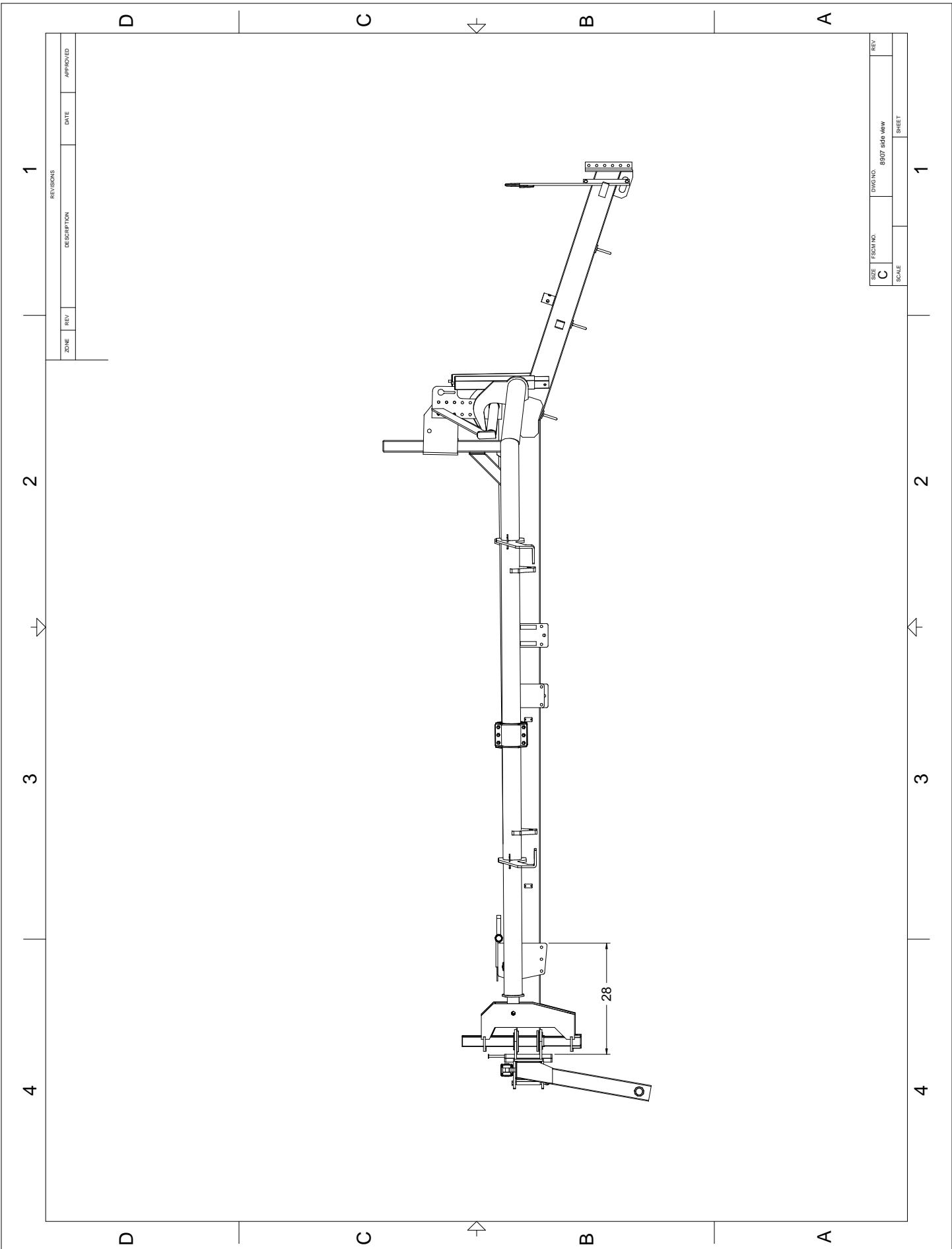


Detail B



Detail A

SIZE	DWG NO.	main comp locations	REV
C			
SCALE	SHEET		

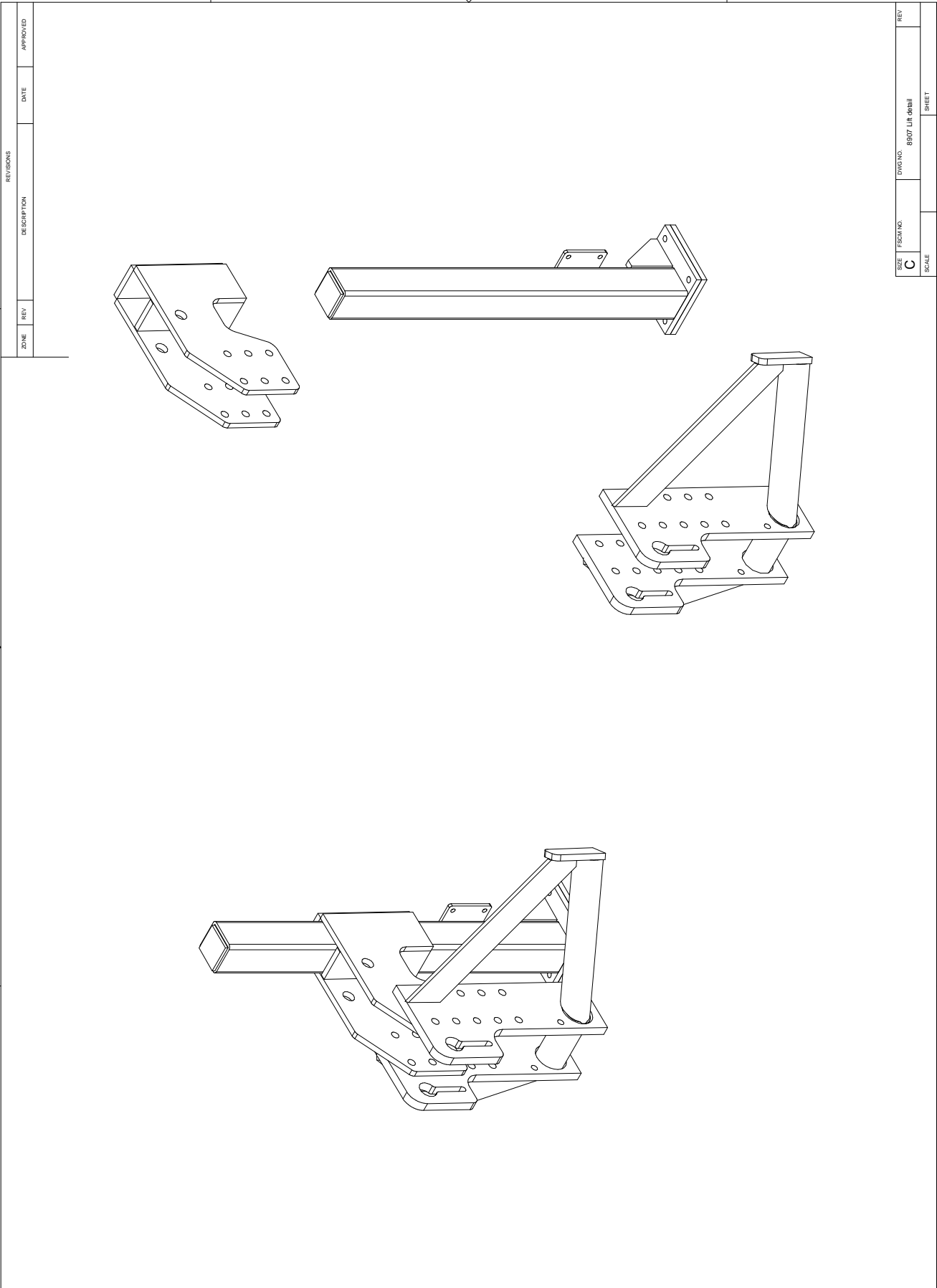


REVISIONS			
ZONE	REV	DESCRIPTION	DATE

DATE	APPROVED

SIZE	DWG. NO.	DIV. NO.	REV
C		8307 side view	

SCALE	SHEET
	1



REVISIONS			
ZONE	REV	DESCRIPTION	DATE

SIZE	FISCHING	DWG. NO.	8007 LIT. 04.01	REV
C				
SCALE			SHEET	

1

2

3

4

D

C

B

A

D

C

B

A

1

2

3

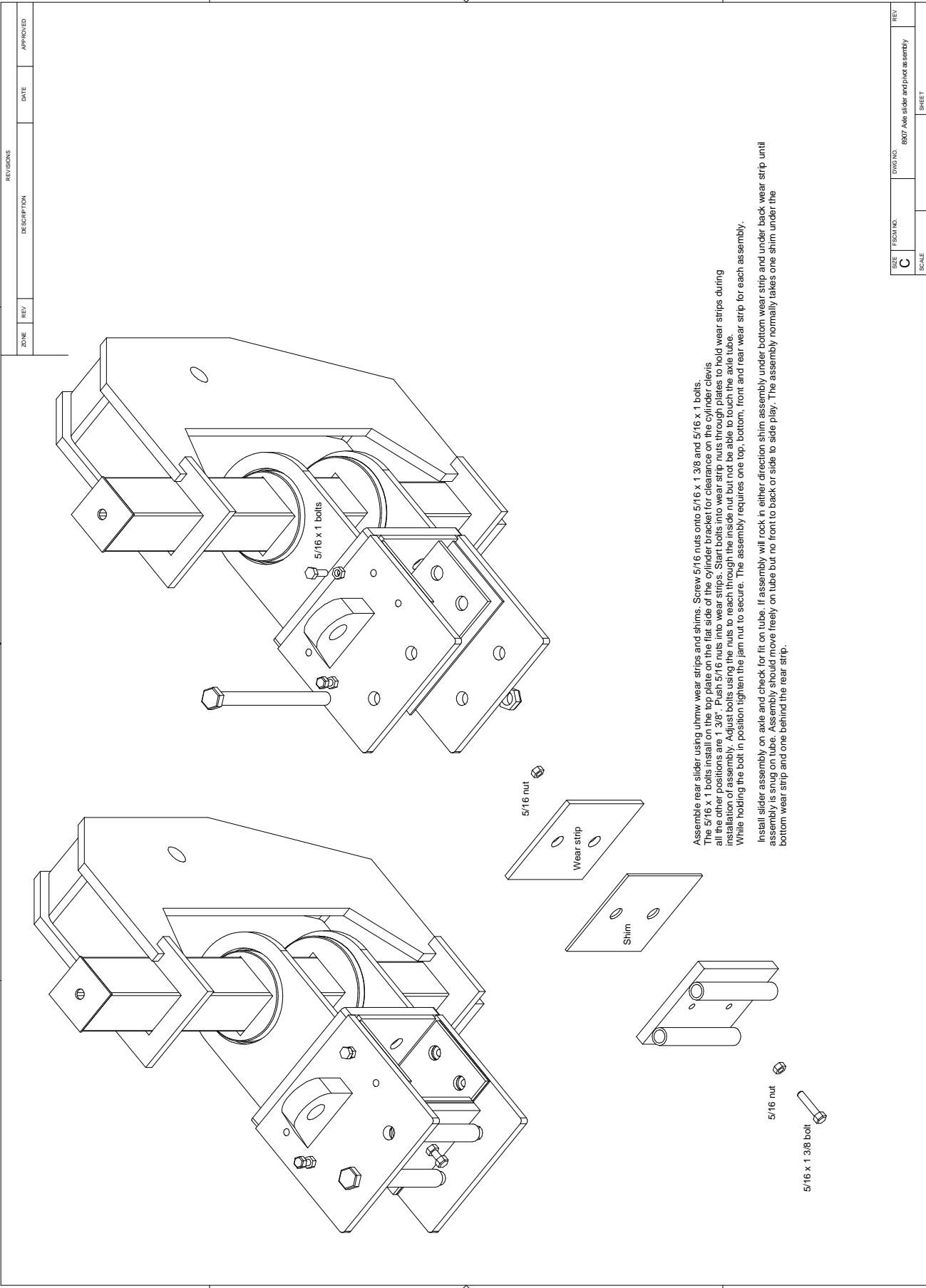
4

1

2

3

4



Assemble rear slider using uhmw wear strips and shims. Screw 5/16 nuts onto 5/16 x 1.3/8 and 5/16 x 1 bolts. The 5/16 x 1 bolts install on the top plate on the flat side of the cylinder bracket for clearance on the cylinder clevis all the other positions are 1.3/8". Push 5/16 nuts into wear strips. Start bolts into wear strip nuts through plates to hold wear strips during installation of assembly. Adjust bolts using the nuts to reach through the inside nut but not be able to touch the axle tube. While holding the bolt in position tighten the jam nut to secure. The assembly requires one top, bottom, front and rear wear strip for each assembly.

Install slider assembly on axle and check for fit on tube. If assembly will rock in either direction shim assembly under bottom wear strip and under back wear strip until assembly is snug on tube. Assembly should move freely on tube but no front to back or side to side play. The assembly normally takes one shim under the bottom wear strip and one behind the rear strip.

REVISIONS		DATE	APPROVED
ZONE	REV	DESCRIPTION	

SIZE	DWG NO.	REV
C	8907 Ave slider and pivot assembly	
SCALE	SHEET	

1

2

3

4