

BLACK PASS INC.

Contact us :



+964 772 905 7070

+1 949 783 9004



ari@theblackpass.com

martin@theblackpass.com



Adress 1: Iraq Kurdistan Region

Erbil 60st Ebil one tower 1510

Adress 2: United State California

Irvine 35 Exploration



www.iboxiraq.com

www.theblackpass.com



iBOX
FOR PACKAGING SOLUTIONS



iBOX Package For International Treading



Woodfree Offset Paper

Offset paper is specially treated with smooth surface and high whiteness optical effects, which enable the paper to meet the very high requirements of colors from the printing customers, overall printing quality is enhanced by the reproduction of the vivid colors. Strictly controlled surface strength and the paper dust during production process help the printers to minimize the problems of picking and dusting to ensure the working efficiency. Has consistent paper quality and fine printing quality.



Application

Mainly used for high quality books, children's books, picture albums, brochures, magazines, posters, high-quality envelopes, bills, etc.



Book



Instruction book



Note book



Envelope

Normal GSM

Items	Unit	Standard	Parameters							
Basis Weight	gsm	ISO 536	56	60 76	70	80	90	100	120	
Caliper	μm	ISO 534	70	100	86	97	107	115	135	
ISO Brightness	%	ISO 2470-1	100	≥88	100	100	100	100	100	
Opacity	%	ISO 2471	≥87	≥35	≥91	≥92	≥92	≥93	≥94	
Smoothness	s	ISO 5627	≥35	5.5-	≥35	≥35	≥35	≥30	≥30	
Moisture	%	ISO 287	5.5-6.0	6.0	5.5-6.0	5.5-6.0	5.5-6.0	5.5-6.0	5.5-6.0	
COBB	gsm	ISO 535	25-35	30-40	35-50	35-50	35-50	35-50	35-50	
Foiling Endurance	times	ISO 5626	≥10	≥10	≥10	≥10	≥10	≥10	≥10	
Surface Printing Intensity	m/s	IGT	≥2.0	≥2.0	≥2.0	≥2.0	≥2.0	≥2.0	≥2.0	

High GSM

Items	Unit	Standard	Parameters							
Basis Weight	gsm	GB/T451	60	70	80	100	120	140	160	180
Bulk	cm ³ /	GB/T451	1.26	1.25	1.23	1.19	1.19	1.18	1.18	1.17
Bekk Smoothness	g s	GB/T456	40	40	40	40	40	40	40	40
Water uptake value	gsm	GB/T1540	25	25	25	25	25	25	25	25
CIE whiteness	%	GB/T7974	145	145	145	145	145	145	145	145
D65 whiteness	%	GB/T7974	100	100	100	100	100	100	100	100
Opacity	%	GB/T1543	89	91	93	96	97	98	99	99
Moisture	%	GB/T462	6.0	6.0	6.0	6.0	6.0	6.0	6.0	6.0

C1S Ivory Board

The product has advantages of good stiffness, high bulk, high smoothness, good formation evenness and good printing color reproduction, and are widely used in pharmaceutical, cigarette, food, cosmetics, apparel, calendar, albums and other premium packaging and printing industry applications.



Application

Mainly used for premium cosmetics box, medical box, business cards, shopping bag, certificate, invitation letter, cover, calendar, cigarette box, high-end packing box, greeting cards and post cards etc.



Cosmetic box



High-end packaging box



Medicine box



Shopping bag

Normal Bulk

Items		Unit	Standard	Parameters						
Basis Weight		gsm	ISO 536	190	210	230	250	300	350	400
Caliper		μm	ISO 534	245	280	315	345	415	490	555
CD Stiffness(≥)		mN · m	ISO 2493	1.70	2.10	3.30	3.80	6.50	10.0	14.0
MD Stiffness(≥)				3.57	4.41	6.93	7.98	13.7	21.0	29.4
Moisture		%	ISO 287	6.5±1.0			7.5±1.0		8.5±1.0	
D65 Brightness		%	ISO 2470	90.0±3.0						
Smoothness (Top)		s	ISO 5627	≥100						
PPS (Top)		μm	ISO 8791-4	≤1.10						
Cobb, 60s	Top	gsm	ISO 535	≤45.0						
	Back			≤55.0						
Folding		times	ISO 5626	≥15						

High Bulk

Items	Unit	Standard	Parameters								
Basis Weight	gsm	ISO536	205	225	245	255	290	305	345		
Caliper	μm	ISO 534	310	340	390	415	460	490	555		
CD Stiffness(≥)	mN・m	ISO 2493	3.30	4.50	6.30	7.10	10.7	12.1	14.0		
Moisture	%	ISO 287	6.5±1.0		7.5±1.0			8.0±1.0	8.5±1.0		
D65 Brightness	s	ISO 2470	90.0±3.0								
Smoothness	μm	ISO 5627	≥100								
PPS (Top)		gsm	ISO 8791-4	≤1.50							
Cobb, 60s	Top	times	ISO 535	≤45.0							
	Back			≤60.0							
Folding			ISO 5626	≥15							

C2S Art Paper

Art paper is uniform and tight, the surface is very smooth and flat, with high smoothness and good gloss. The printed graphics and pictures have a three-dimensional effect. It can be widely used to print pictorials, advertisements, landscape paintings, exquisite calendars, portrait photography, etc.



• Application

Art paper mainly used for periodicals, magazines, book covers, interior pages, posters, catalogue, brochure, leaflets, flyer and etc. Art card mainly used for business cards, tag, brochures magazine covers, calendars menus, books cover, picture albums posters, high-grade envelopes and etc.



Business card



Magazine



Note book cover



Insert & Leaflet

• Art Paper

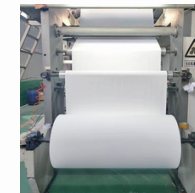
Items	Unit	Standard	Parameters											
Basis Weight	gsm	ISO 536	80	90	105	115	120	128	140	148	157	170	200	250
Caliper	μm	ISO 534	63	73	84	91	95	104	120	128	136	148	180	235
ISO Brightness	%	ISO 2470	92±1	92±1	92±1	92±1	92±1	92±1	92±1	92±1	92±1	92±1	92±1	92±1
Bulk	cm ³ /g	ISO 534	0.7880	0.811	0.79	0.79	0.79	0.79	0.860	0.860	0.870	0.871	0.9	
Gloss 75°	%	ISO 8254/1	≥70											
Ink absorption	%	K&N	22±3	22±3	22±3	22±3	22±3	22±3	22±3	22±3	22±3	22±3	22±3	22±3
Surface Printing Intensity	m/s	ISO 3783	≥1.5											
Roughness	μm	ISO 8791/4	≤1.2	≤1.2	≤1.2	≤1.2	≤1.2	≤1.2	≤1.2	≤1.2	≤1.2	≤1.2	≤1.2	≤1.2

• Art Card

Items	Unit	Standard	Parameters									
Basis Weight	gsm	ISO536	170	190	200	210	230	250	300	350	400	
Caliper	μm	ISO 534	170±6	190±6	200±6	210±7	230±7	250±7	300±7	350±7	400±7	
CD Stiffness(≥)	mN	ISO 2493	0.5	0.7	0.8	1.0	1.3	1.4	2.6	3.2	5.0	
Moisture	%	ISO 287	6.5±1.0					7.5±1.0		8.0±1.0		
D65 Brightness	%	ISO 2470	90.0±3.0									
Smoothness	%	ISO 5627	≥120									
PPS(H-10)	s μm	ISO 8791-4	≤1.4									
Cobb, 60s	gsm	ISO 535	≤50.0									
75° Gloss	/	ISO 8254	≥48									

Thermal Paper Jumbo Roll

Thermal paper is originally termed as thermal fax paper or thermal recording paper. The paper is coated with a colorless formula, which will develop an image by the application of heat. The paper may be used as fax paper on fax machines, as thermal recording paper on cardiographic or industrial recording devices, or converted to ATM rolls or POS rolls for ATM or Place of Sale applications. Thermal paper with additional top-coat or semi top-coat may be used for logistic and supermarket labels, lottery tickets, train tickets, and many other applications.



• Application

Thermal paper jumbo rolls are usually used to cut into small thermal rolls, or as thermal adhesive face paper, high gsm thermal paper can also be used to do air ticket, entrance ticket and so on.



Cash register paper



Fanfold Label



Thermal Label



Thermal card-ticket

• Normal Bulk

Items	Unit	Standard	Parameters									
Gram Weight	gsm	ISO 537	45	48	50	55	58	65	70	80		
Basis Weight Variation	gsm	ISO 537	≤±5%	≤±5%	≤±5%	≤±5%	≤±5%	≤±5%	≤±5%	≤±5%		
Thickness	μm	ISO 534	50±2	52±3	54±3	60±3	76±2	80±3	82±2	86±2		
Density	g/cm ³	ISO 2470	≤0.96	≤0.96	≤0.96	≤0.96	≤0.96	≤0.96	≤0.96	≤0.96		
Whiteness	%	ISO 535	≥88	≥88	≥88	≥88	≥88	≥88	≥88	≥88		
Water absorption	gsm	ISO 5627	≤35	≤35	≤35	≤35	≤35	≤35	≤35	≤35		
Smoothness (Front)	s	ISO 8791-4	≥200	≥200	≥200	≥200	≥200	≥200	≥200	≥200		
PPS roughness	μm		≤2.0	≤2.0	≤2.0	≤2.0	≤2.0	≤2.0	≤2.0	≤2.0		
Dynamic sensitivity (0.42mj/dot) O.D												
Static sensitivity	70°C	O.D	≥1.25	≥1.25	≥1.25	≥1.25	≥1.25	≥1.25	≥1.25	≥1.25	≥1.25	≥1.25
	105°C	O.D	≤0.20	≤0.20	≤0.20	≤0.20	≤0.20	≤0.20	≤0.20	≤0.20	≤0.20	≤0.20
Moisture												
	%	ISO 287	5-6.5	5-6.5	5-6.5	5-6.5	5-6.5	5-6.5	5-6.5	5-6.5	5-6.5	5-6.5

Thermal Paper Small Roll

Description Cash Register Paper/Thermal Small Roll/Thermal Tags/Thermal Paper

Color	In blue image
	In black image
Size	80x83mm,80x80mm,80x75mm,80x70mm,80x60mm
	57x80mm,57x60mm,57x50mm,57x40mm,57x30mm
GSM	Customized 45/48/55/60/65/70/80gsm
	Shrunked
Packing	packing into carton
	Aluminium foil packing
Packing	Bag packing
	Paper packing
Packing	OEM Packing



Application Supermarkets, chain stores, restaurants, hospitals, logistic companies, gas stations, etc.

• OEM Service



Color Customization



Biscuit Bag Packing



Film and Aluminium Packing



Gold Aluminium Foil Packing



Packing with Round Label



Packing with Round Label



Custom Carton / Printing Customization



Shrink Packing

Carbonless Paper NCR Paper

Carbonless paper (CCP or NCR) is coated paper with copying function that requires no carbon paper to be inserted between different layers of paper, but if you write or apply pressure on the first layer the writing or the image is re-produced on the underlying layers. Today carbonless paper is used to make official documents with legal effects, such as contract forms, tax invoices, hotel bills, vouchers, etc.



• Application

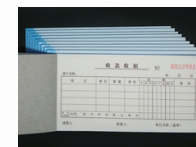
Mainly used for payment receipt, delivery note, bill of material etc.



Delivery Note



Material Bill



Payment Receipt



Computer Form

Characteristics	Clear image / Aging - resistant	
Base Weight/gsm	45-80gsm	
Image	Blue/Black	
Color	White/Pink/Yellow/Blue/Green	
Size	Sheet size 61*86cm, 77*110cm, 70*100cm etc Roll size 281mm, 381mm, 483mm etc	
Characteristics	Unit	Specification
Deviation of Basis Weight	%	≤5.0
Apparent Density	g/cm	≥0.70
Brightness	3 %	≥85
Opacity	% s	≥65
Smoothness (CF Side)	kN/m	≥55
Tensile Strength	%	≥2.4
Light Resistance	%	≥50
Surface Strength (medium viscosity printing ink)	m/s	≥0.40
Curls	mm	≤12.0
Moisture content of delivery goods	%	6.5 ± 2.0

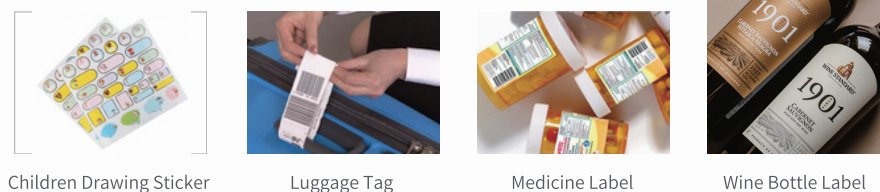
Self Adhesive Sticker Paper

• Self Adhesive Sticker-Paper Sticker

Self-adhesive label materials are suitable for various printing and printing methods such as letterpress, flexographic, offset, screen, thermal transfer, inkjet, laser, digital, etc., and are widely used in variable information labels, anti-counterfeiting labels and basic labels in logistics, medicine, daily chemicals, food, wine and other industries. The selected raw materials, excellent glue performance, and high-quality coatings exclusive to polar surfaces bring users a new value experience.



• Application



Main Products	Cast Coated Sticker/Semi-gloss Sticker/Offset Sticker/Kraft Sticker/Thermal Sticker/Color Sticker and etc
Face Material	Cast coated paper/Art paper/Offset paper/Kraft paper/Thermal paper/color paper and etc Hot melt glue/Acrylic glue and etc
Adhesive	Release paper: White/Yellow color Glassine paper: White/Yellow/Blue color
Bottom Paper	

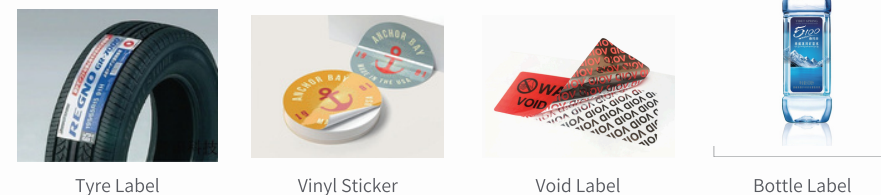
Self Adhesive Sticker Film

• Self Adhesive Sticker-Film Sticker

Adhesive films are special, wafer-thin films (<1 mm) plastic films that are used for labeling and sticking on vehicles, shop windows, advertising signs, advertising tarpaulins, panels, furniture or walls, or have almost unlimited uses as stickers. In addition to classic advertising, they are also increasingly being used in the decorative sector. Adhesive films are made of PVC (polyvinyl chloride) or PET (polyester) and have a special adhesive layer on the back, which differ in adhesive strength and properties depending on the application. Available as already coloured, single-colour films (e.g. for single-colour adhesive lettering, produced on cutting plotters) or films specially produced for digital printing (base surface in white), which can be printed with all shapes and colours (logo, photos, lettering, etc.) Monochrome films are usually processed directly by cutting plotters, while digital printing films are first printed, laminated and then cut into the desired shape.



• Application



Main Products	PP Sticker/PVC Sticker/PET Sticker/Vinyl/Lamination film/Gold&Silver Foil Sticker and etc
Face Material	PP/PVC/PET/Gold&Silver Foil and etc
Adhesive	Hot melt glue/Acrylic glue/Oil glue and etc
Bottom Paper	Release paper: White/Yellow color Glassine paper: White/Yellow/Blue color

Label

A label (as distinct from a tag) is a piece of paper, plastic film, cloth, metal, or other material that is attached to a container or product and has information or symbols written or printed on it about the product or article. Information printed directly on a container or article is also considered a label. Labels have many uses, including promotion and providing information about a product's origin, manufacturer (e.g., brand name), use, safety, shelf life, and disposal.



Application



Food Label



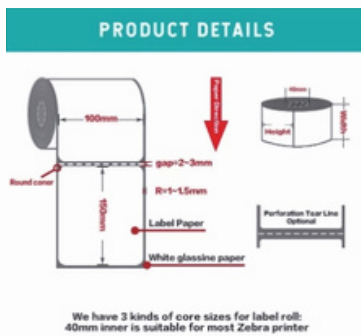
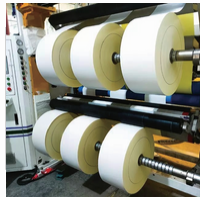
Gift Label



Price Label

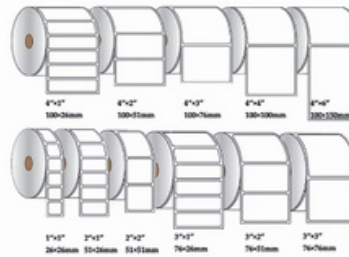


Express Waybill

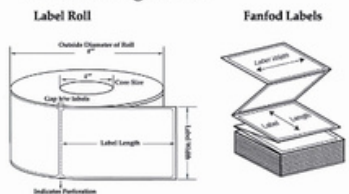


Please confirm the core size before place order

Size customization

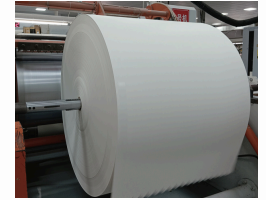


Label Configuration



Cupstock Paper

Cupstock paper is a food-safe paper, suitable for both hot and cold food and beverages. Each base paper consists of 2 or 3 layers, known as ply. High quality cupstock paper has the ability to withstand liquid holdout challenges because it's laminated with PE, PLA, or Water Base solutions and is supported by one of its mechanical properties: Scott Bond. This hinders liquids from leaking, penetrating through and getting absorbed into the inner layers of the paper ply. With this attribute, cupstock paper becomes the ideal choice for paper cups, noodle and soup bowls.



Application



Cupstock Base Paper

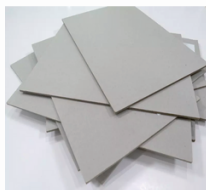
Items		Standard	Parameters											
GSM	g/m	GB/T451	140±5	160±5	180±5	190±6	210±7	240±8	260±8	280±8	300±8	320±8	340±8	360±8
Thickness	μm	GB/T451	215±10	240±10	250±10	275±10	285±10	315±10	330±10	350±10	360±10	380±10	400±10	420±10
Bekk Smoothness	s	GB/T456	≥8	≥8	≥8	≥8	≥8	≥8	≥8	≥8	≥8	≥8	≥8	≥8
D65 brightness	%	GB/T7974	80±5	80±5	80±5	80±5	80±5	80±5	80±5	80±5	80±5	80±5	80±5	80±5
Stiffness	mN.m CD mN.m MD	GB/T22364	≥0.8	≥1.2	≥1.5	≥1.8	≥2.3	≥3.3	≥4.3	≥5.2	≥6.5	≥7.0	≥7.6	≥8.2
Dust	> (0.3-1.5)mm ² 1.5-2.5mm ² 2.5mm ²		4	4	4	4	4	4	4	4	4	4	4	4
Moisture	%	GB/T462	6.0±2.0	6.0±2.0	6.0±2.0	6.0±2.0	6.0±2.0	6.0±2.0	6.0±2.0	6.0±2.0	6.0±2.0	6.0±2.0	6.0±2.0	6.0±2.0

PE Coated

Item	Test Method	12	15	18
Substance (g/m ²)	GB/T451	12±2	15±2	18±2
Thickness (μm)	GB/T451	12±2	15±2	18±2
Dust (</m ²)	(0.3-1.5)mm ² 1.5-2.5mm ² 2.5mm ²	80 4 0	80 4 0	80 4 0

Grey Board & Duplex Board

Grey board has high stiffness good surface smoothness, low surface roughness and stable ink absorb-ability. Duplex board with grey back coated with a high surface brightness, smoothness, Ink absorption and print gloss are good, cardboard itself has good stiffness and folding.



Application

Grey board mainly used for file folders, packing boxes, book cover scans separator, Packaging & Displays & Model Making & Mounting Art Print. Duplex board mainly used for commodity packaging, pharmaceutical/ health care products packaging, gift packaging, express envelope, food packaging indirect, toy packaging, ceramic packaging, stationery and packaging



Battery Packing Box



File Folder



Gift box



Express Envelope

Grey Board

Items	Standard	Single Ply Board										Laminated Board									
Substance (gsm±3%)	GB/T451	300	400	500	600	700	800	900	1000	1100	1200	1300	1400	1500	1600	1800	2000				
Thickness (mm±0.03)	GB/T451	0.48	0.64	0.80	0.96	1.12	1.28	1.49	1.65	1.82	1.98	2.15	2.31	2.48	2.64	2.97	3.30				
Moisture	GB/T462	8.0±2.5 10.0±2.0																			

Duplex Board

Items	Unit	Standard	250GSM	300GSM	350GSM	400GSM	450GSM
Basis Weight	g/m ²	GB/T451	±3%	±3%	±3%	±3%	±3%
Caliper	um	GB/T451	300±20	360±20	420±20	485±20	545±20
Moisture	%	GB/T462	7.0±2	7.0±2	7.0±2	7.0±2	7.0±2
Brightness	%	GB/T7974	≥76	≥76	≥76	≥76	≥76
Roughness (1000cpm)	um	GB/T456	≤1.5	≤1.5	≤1.5	≤1.5	≤1.5
IGT	m/s	GT/T7540	≥1.0	≥1.0	≥1.0	≥1.0	≥1.0
Stiffness(CD)	mN.m	GB/T22364	≥2.5	≥4.0	≥6.0	≥9.0	≥12.0
Cobb (Front)	g/m ²	GT/T1540	≤50	≤50	≤50	≤50	≤50
Cobb (Back)	g/m ²	GT/T1540	≤120	≤120	≤120	≤120	≤120
Gloss	%	GB/T456	≥35	≥35	≥35	≥35	≥35
K&N	%	GT/T8620	3-14	3-14	3-14	3-14	3-14

Color Paper & Board

Color paper made from virgin pulp and dyed from the pulphas quickink-drying characteristics so you can experience bleed-free ideal for all types of copiers and printers include laser. Inkjet and digital copiers and have been widely used in the packaging and printing industry.



Application

Color paper/card are generally used to make notebooks, picture, albums, magazines, color pages, product catalog, calendar covers, inserts, illustrations, products brochures, manuals, cosmetic, leaflets, envelopes, flowers, gift boxes, various cards, such as birthday cards, greeting cards, holiday cards, gift cards, greeting cards and other handicrafts, etc.



Craft



Greeting Card



Wedding Card



Drawing Paper

Color Paper Original

Items	Basis weight	Caliper	CIE Whiteness	Smoothness Bekk	Opacity	Moisture	Brightness UV	Test Conditions
Unit	g/m ²	g/m ²	μm	%	sec	%	%	Temperature 23±1°C, RH: 50±2% Standard atmospheric condition
Method	ISO 536	ISO 536	ISO 534	ISO 11475	ISO 5627	ISO 2471	ISO 2470	
Parameters Data	70	70	76±4	161±3	105±25	92±2	110±1.5	
	80	80	88±4	161±3	105±25	93±2	110±1.5	
	90	90	98±4	161±3	105±25	94±2	110±1.5	
	120	120	126±4	161±3	105±25	96.5±2	110±1.5	
	160	160	166±6	161±3	105±25	98.5±2	110±1.5	
	200	200	200±7	161±3	105±25	99±1	110±1.5	
	220	220	220±7	161±3	105±25	99	110±1.5	
	250	250	245±8	161±3	105±25	99	110±1.5	
	280	280	280±8	161±3	105±25	99	110±1.5	
	300	300	305±9	161±3	70±30	99.5	110±1.5	
	350	350	350±10	161±3	70±30	99.5	110±1.5	
	400	400	415±12	161±3	70±30	100	110±1.5	

The data listed in the form is only for reference. Please forgive the non-informing if the date changed.
All above is only for reference and shall not be deemed as inspection standard.

Pearlescent Paper

Pearlescent paper has a very smooth surface, thick thickness, strong reflectiveness and pearl luster. The composition of pearlescent paper is the same as that of ordinary white paper, that is, it consists of three parts: bottom fiber, filler and surface coating. Pearlescent paper is an environmentally friendly material that has both the characteristics of paper and the advantages of plastic.



• Application

The uses of pearl paper are quite varied. This type of paper is often used in the creation of invitations, business cards, scrapbooking, and other stationery items. Pearl paper can also be used to create unique effects in art and photography projects.



Business Card



Clothing Tag



Color Opinion



High-end Box

Fluorescent Paper

Papers that are light bluish white to bright bluish white are fluorescent. Papers that are extremely bright bluish white are hibrite. We provide different size like jumbo roll, big sheets, can provide reel, bulk and ream 3 packing way. We can also provide small size like A3, A4, A5 and other size, if you need fluorescent sticky pad directly, we can provide too, single color or mixed color both can provide, if you want to custom colors, we have a team special for your request. We have our own factory to provide OEM and ODM service, welcome to contact us for more information.



• Application



Self Adhesive
Fluorescent Paper



fluorescent Sticky
Note Pads



Craft Paper



7 Standard Colors

Other Special Paper



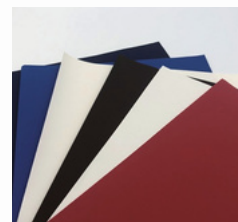
A4 Copy Paper



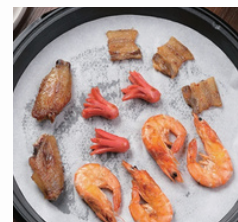
Black Card



Color Corrugated Paper



Soft Touch Paper



Greaseproof Paper



Kraft Paper



Leather Grain Board



Metallic Paper



Photo Paper