

CLASSIC 2 PRO



LITHIUM BATTERY

● 5 YEAR WARRANTY ● NO MAINTENANCE ● ALUMINUM PACK

BODY & CHASSIS

TPO injection moulding front and rear body

POWER

Lithium battery
48V 4KW AC motor
400 AMP Evolution AC Controller
20mph max speed
25A Evolution on-board charger

DIMENSIONS

Classic 2 pro: 94" x 55" x 72"

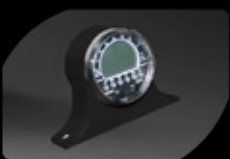
FEATURES

- Two tone seat
- Black dashboard with four cup holders/cell phone holder
- 14" Alum Wheel with black insert/215/35R14Radial DOT Tire
- Speedometer
- Full DOT seat belts
- USB
- Evolution on-board smart charger

- LED Headlights, LED tail lights, brake lights, turn signals, horn
- Rear view mirrors
- Clear foldable windshield
- Golf bag holder
- Sweater basket

OPTION

- Tinted windshield
- Golf bag attachment and sand bottle kit



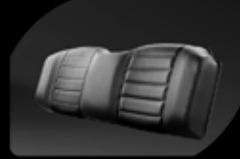
Speedometer



Black dashboard with four cup holders/cell phone holder



14"aluminum wheel with black insert and radial tire

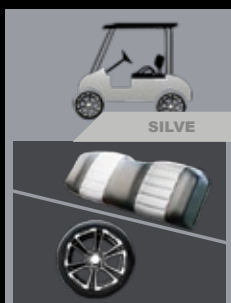
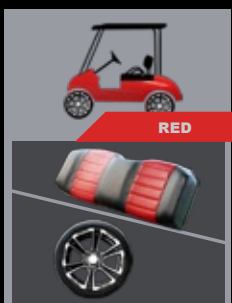


Two tone seat



Luxury steering wheel

Color matching standard



Optional color



EVOLUTION ELECTRIC VEHICLES INC

California Offices:2620 Palisades Drive, Corona CA 92882
Florida Distribution: 7600 Narcoossee Rd, Orlando, FL 32822
Texas Distribution:4053 Grand Lakes way, Grand Prairie, TX 75050
951-268-6689 info@evolutionelectricvehicle.com
www.evolutionelectricvehicle.com

