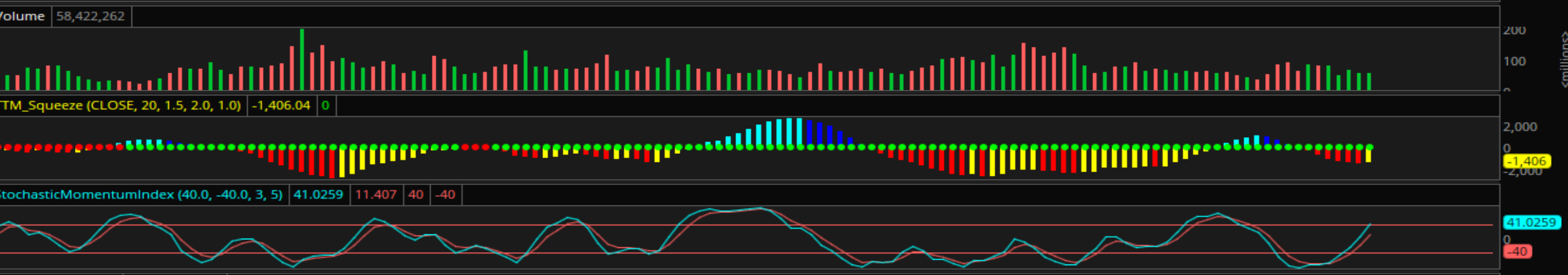
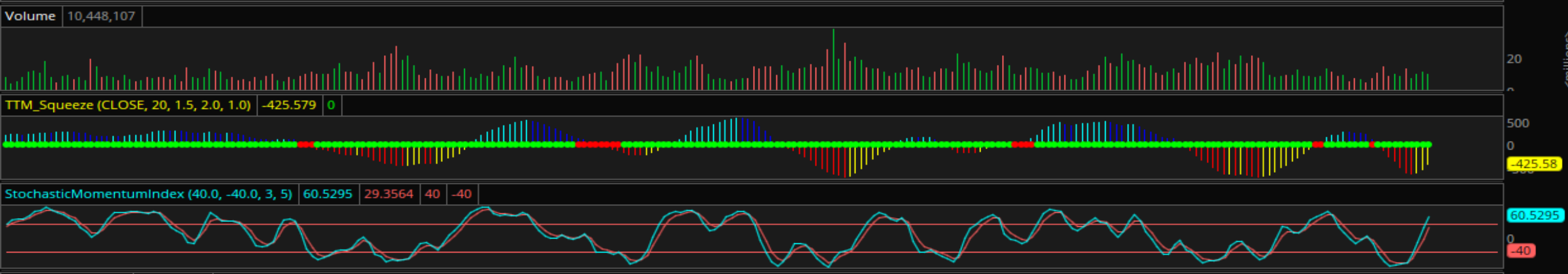


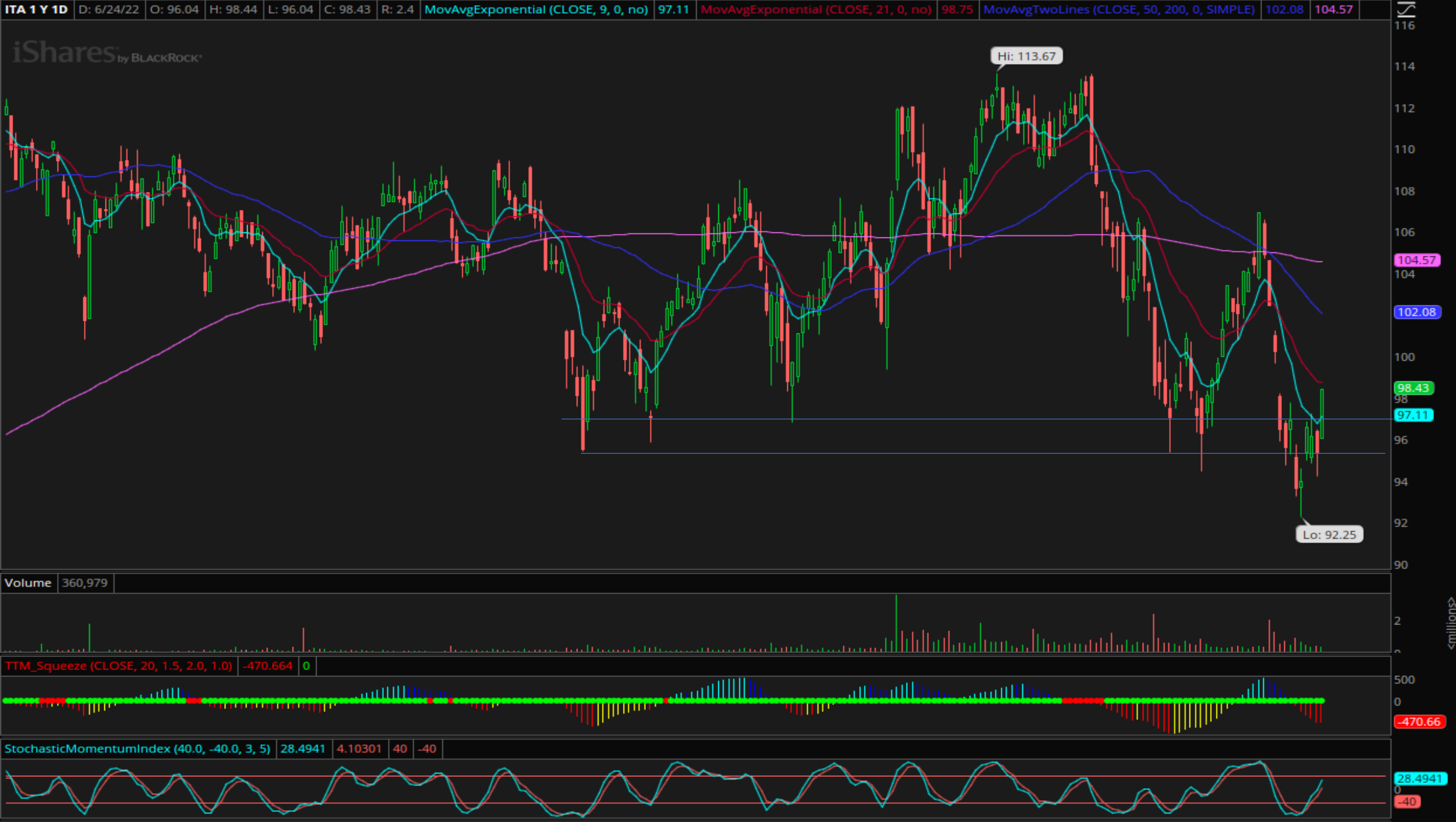
# Bullish Growth Stocks Chart Deck

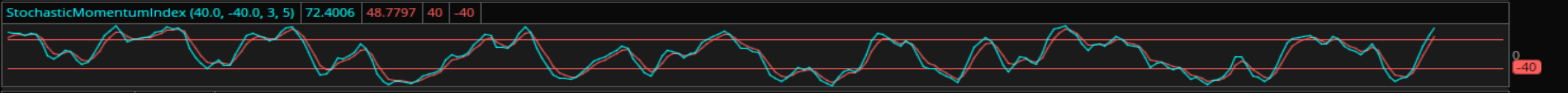
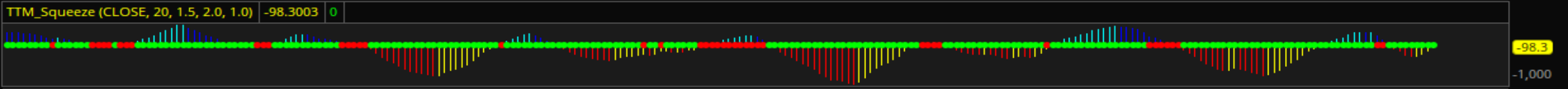
6/27/2022

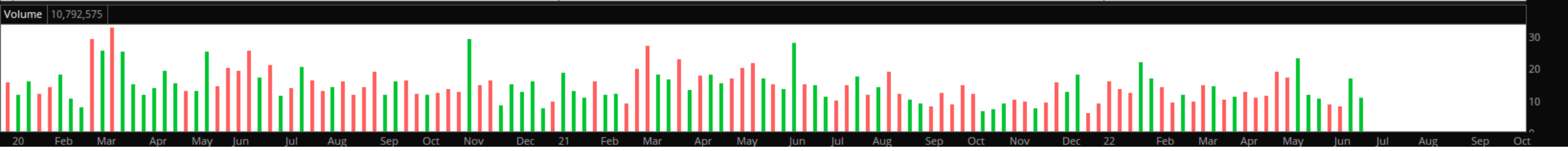
Nick Smith











Strong bounce off pre-covid highs, strong start to trend reversal in beaten down software. Needs to clear DTL but easy to define risk below the 260 area.



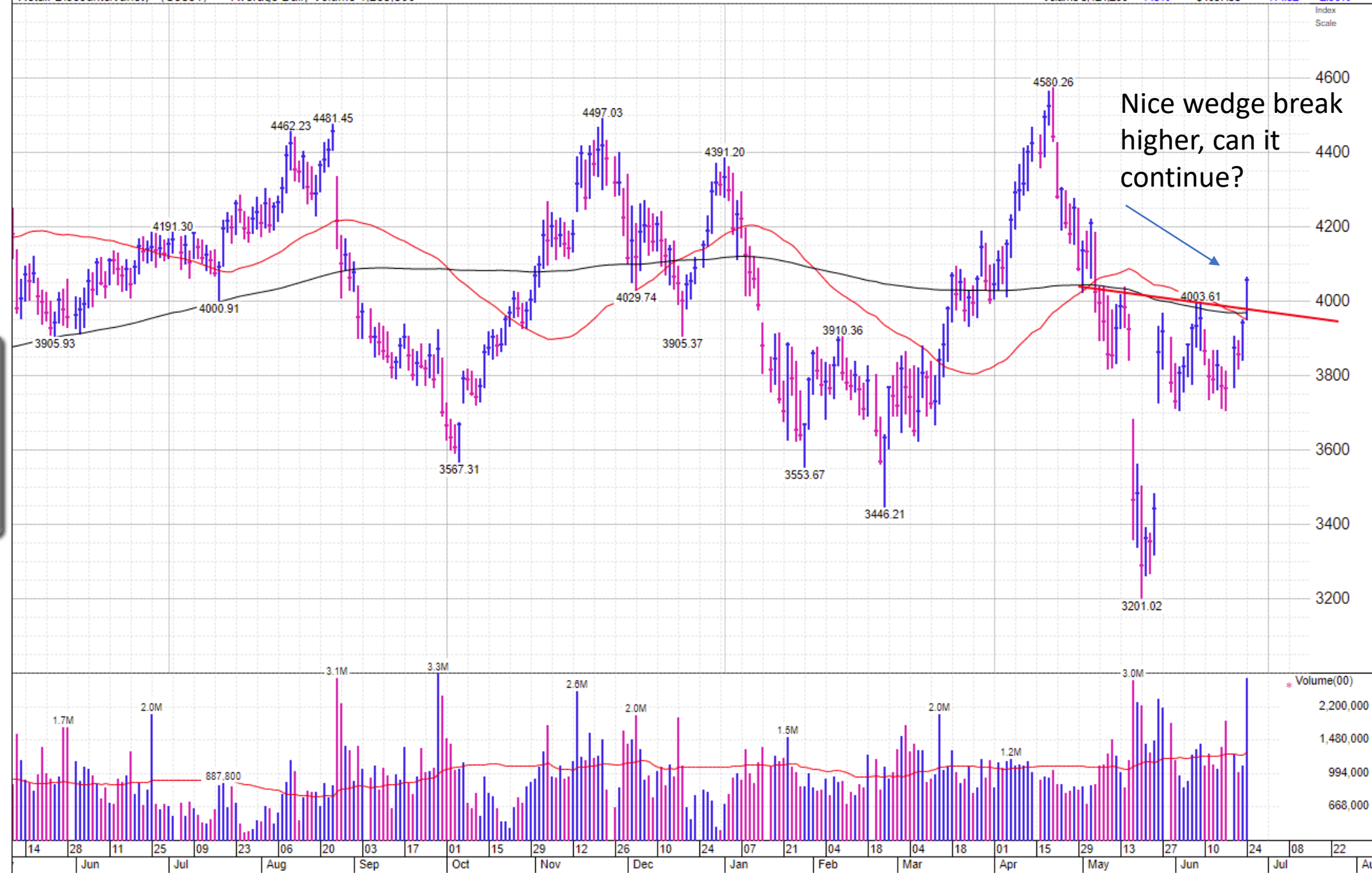
URA respected the 18 level again and looks to be trying to bounce. CCJ and other names in this group starting to look interesting as long as URA holds 18











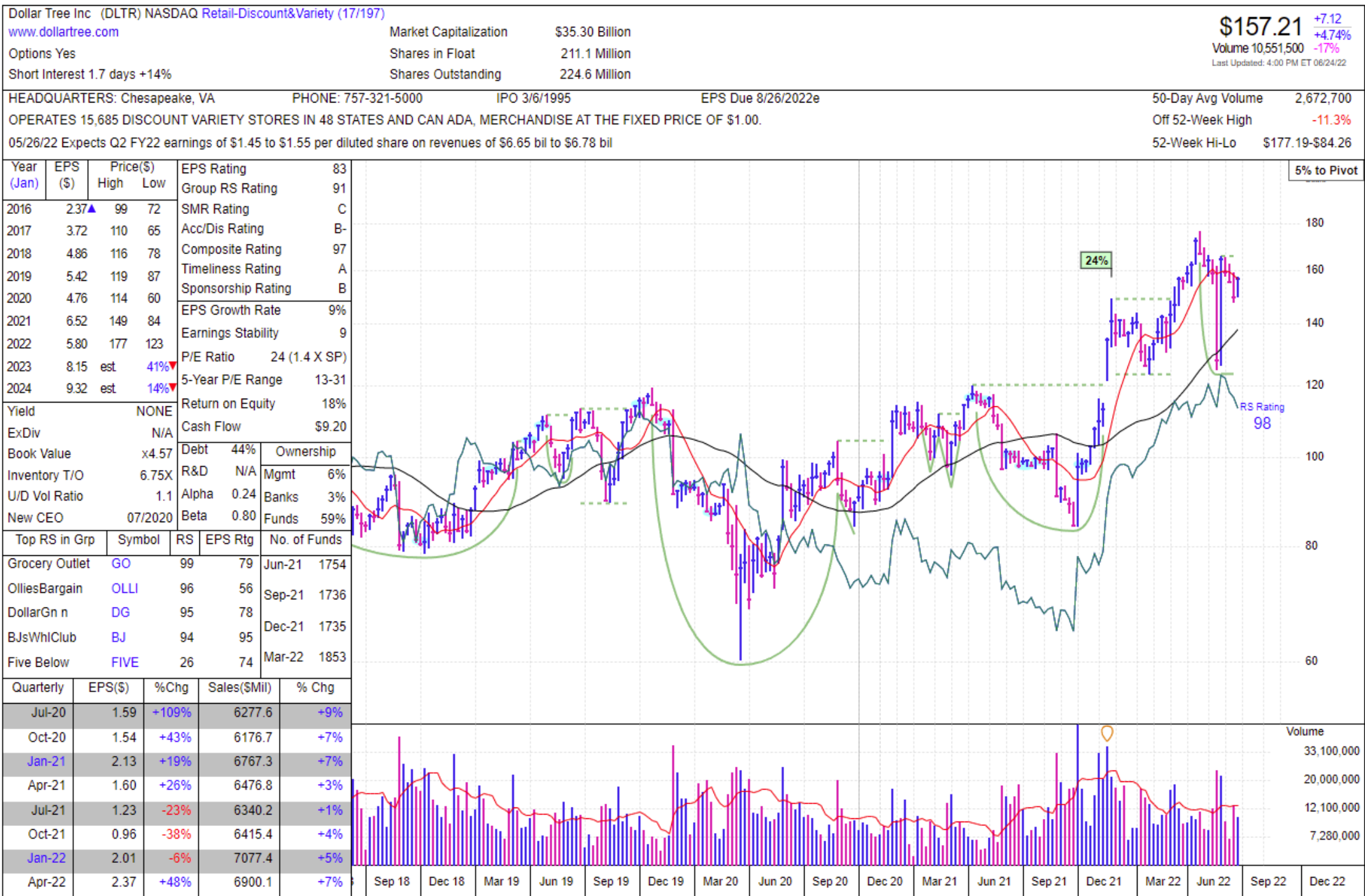
**Top RS + EPS Stocks**

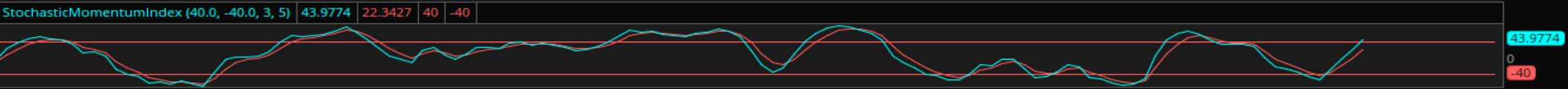
| Symbol | Company              | RS | EPS |
|--------|----------------------|----|-----|
| BJ     | B J S Whisl Club ... | 94 | 95  |
| DLTR   | Dollar Tree Inc      | 98 | 83  |
| GO     | Grocery Outlet H...  | 99 | 79  |
| DG     | Dollar General C...  | 95 | 78  |
| OLLI   | Ollie's Bargain O... | 96 | 56  |

**% Off High**

| Symbol | Company              | % Off High |
|--------|----------------------|------------|
| GO     | Grocery Outlet H...  | 1.0        |
| DG     | Dollar General C...  | -5.5       |
| DLTR   | Dollar Tree Inc      | -11.3      |
| BJ     | B J S Whisl Club ... | -11.7      |
| OLLI   | Ollie's Bargain O... | -33.5      |

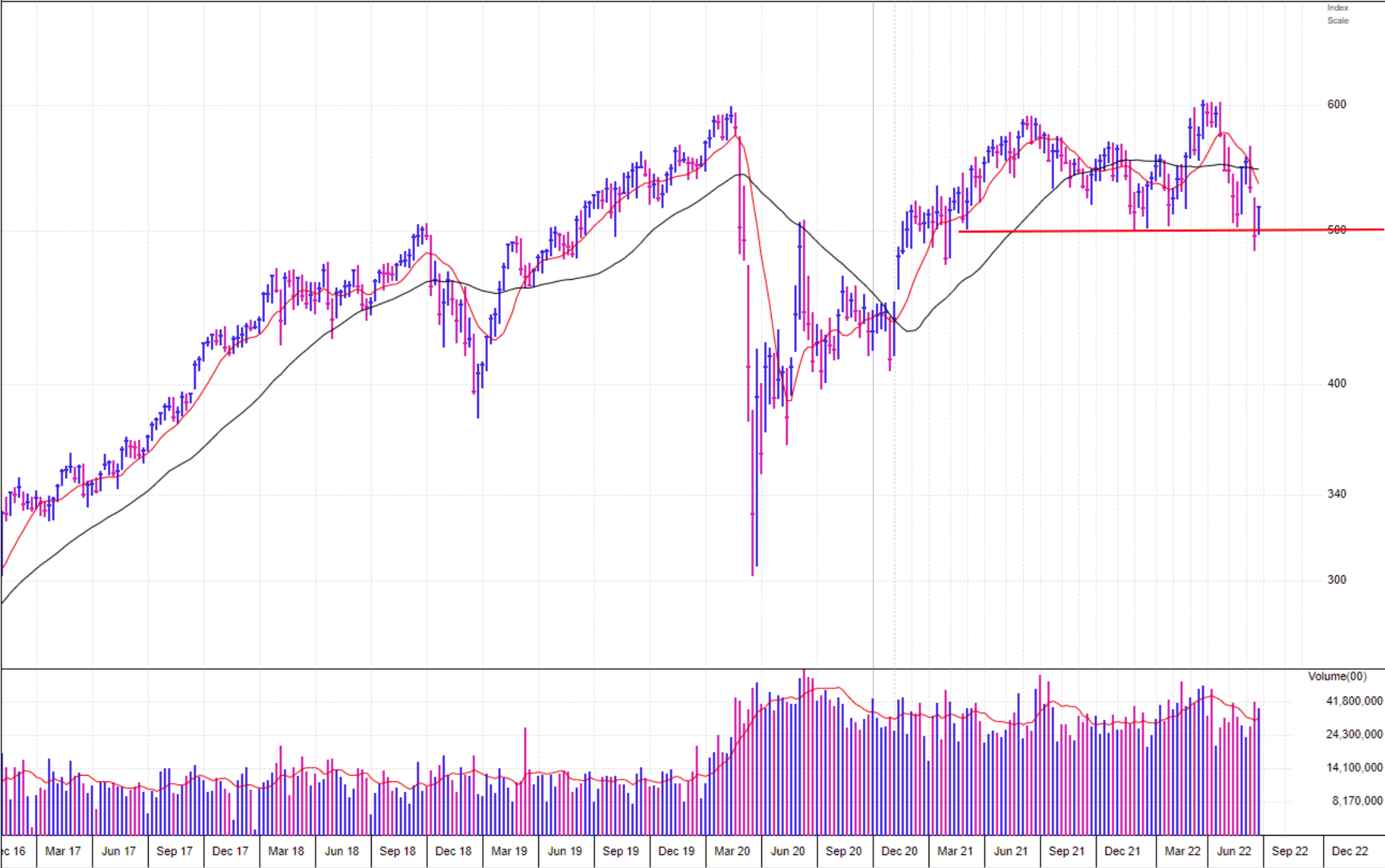






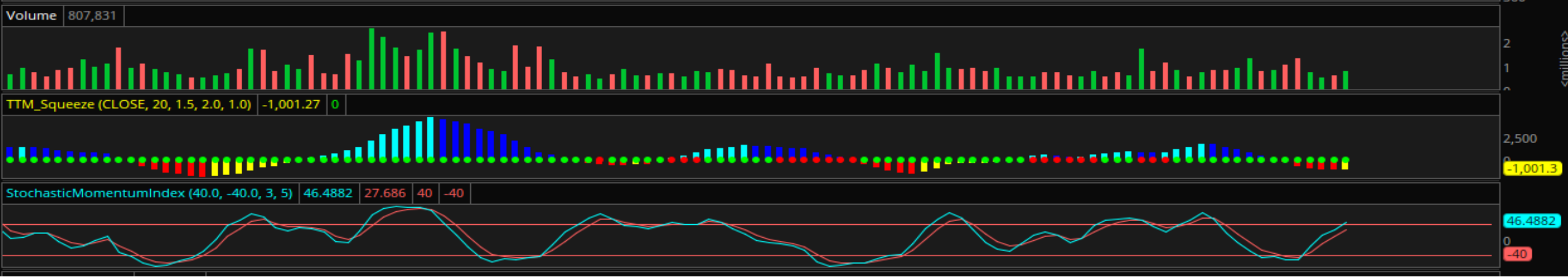
Volume 38,499,800 +17% \$518.50 +22.09 +4.45%

Aerospace/Defense (G3722)



## Aerospace/Defense

| Symbol | Company           | Mkt Cap (mil) |
|--------|-------------------|---------------|
| RTX    | Raytheon Te...    | 140,095       |
| LMT    | Lockheed Ma...    | 111,509       |
| BA     | Boeing Co         | 83,734        |
| NOC    | Northrop Gru...   | 72,079        |
| GD     | General Dyn...    | 61,742        |
| LHX    | L3Harris Tec...   | 45,045        |
| TDG    | Transdigm Gr...   | 29,407        |
| HEI    | Heico Corpor...   | 17,946        |
| TDY    | Teledyne Tec...   | 17,707        |
| TXT    | Textron Inc       | 13,113        |
| ESLT   | Elbit Systems...  | 9,082         |
| HII    | Huntington In...  | 8,623         |
| HEIA   | Heico Corp C...   | 8,619         |
| CAE    | C A E Inc         | 7,903         |
| WWD    | Woodward Inc      | 5,685         |
| CW     | Curtiss-Wrigh...  | 5,044         |
| HXL    | Hexcel Corp       | 4,341         |
| MRCY   | Mercury Syst...   | 3,537         |
| AJRD   | Aerojet Rock...   | 3,230         |
| SPR    | Spirit Aerosy...  | 3,153         |
| JOBY   | Joby Aviation...  | 3,153         |
| MOGB   | Moog Inc Cl B     | 2,863         |
| MOGA   | Moog Inc Cl A     | 2,514         |
| AVAV   | Aerovironme...    | 2,062         |
| MAXR   | Maxar Techn...    | 2,035         |
| RKLB   | Rocket Lab U...   | 1,901         |
| KTOS   | Kratos Def & ...  | 1,771         |
| ERJ    | Embraer Sa ...    | 1,758         |
| SPCE   | Virgin Galacti... | 1,697         |
| EVEX   | Eve Holding Inc   | 1,675         |
| AIR    | A A R Corp        | 1,456         |
| OSIS   | O S I System...   | 1,447         |
| VORB   | Virgin Orbit H... | 1,081         |
| ACHR   | Archer Aviati...  | 978           |
| LILM   | Lilium N V Cl A   | 895           |
| KAMN   | Kaman Corp...     | 879           |
| TGI    | Triumph Gro...    | 829           |
| EVTL   | Vertical Aero...  | 811           |
| ASLE   | Aersale Corp...   | 757           |
| LLAP   | Terran Orbital... | 693           |
| RADA   | Rada Electro...   | 557           |
| EH     | Ehang Holdin...   | 550           |
| DCO    | Ducommun ...      | 525           |
| POWW   | AMMO Inc          | 485           |
| NPK    | National Pres...  | 462           |



AbbVie Inc (ABBV) NYSE Medical-Ethical Drugs (29/197)  
www.abbvieinvestor.com

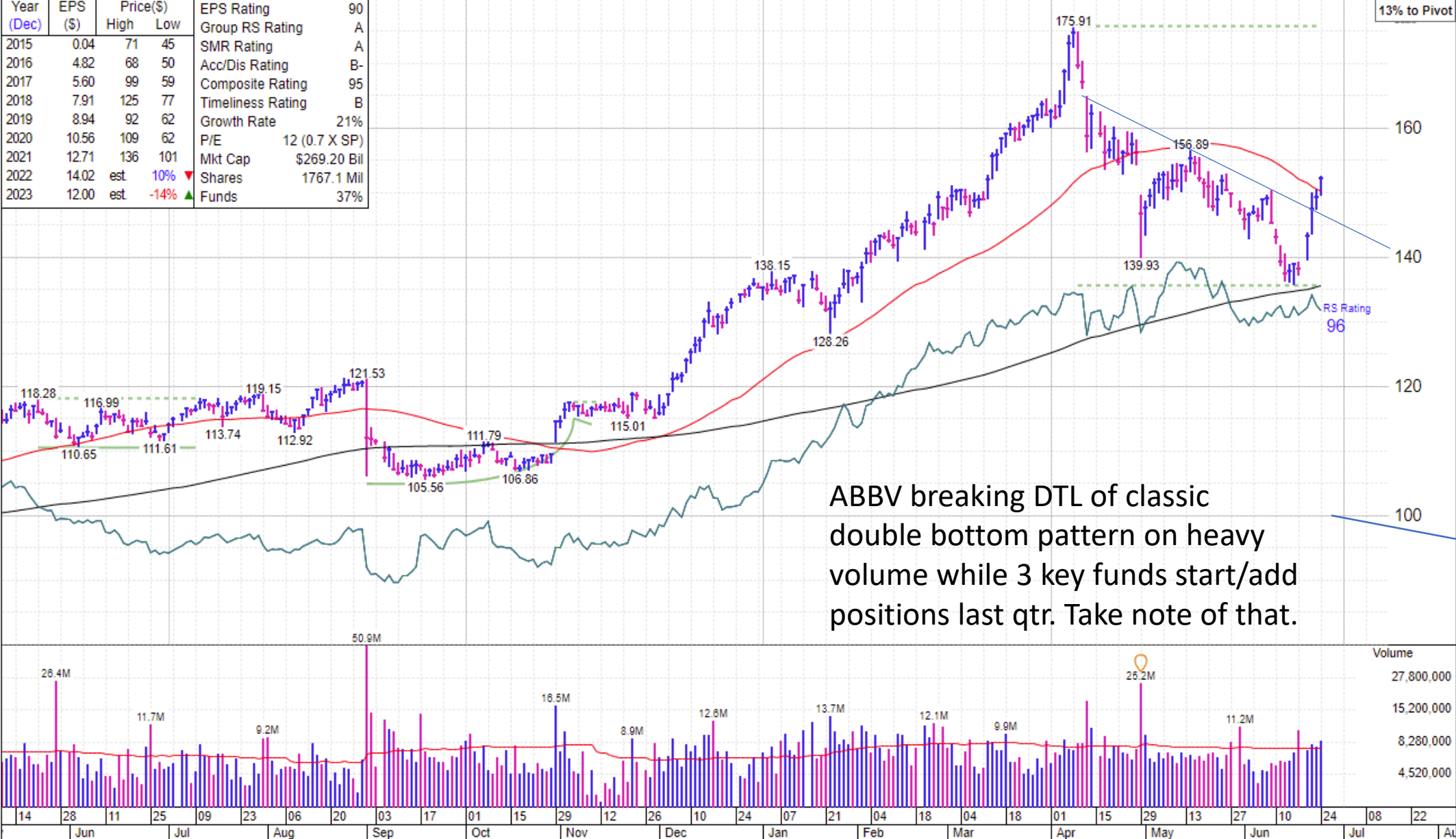
Average Daily Volume 7,418,700

DEVELOPS PHARMACEUTICAL PRODUCTS TO TREAT IMMUNOLOGY, VIROLOGY, ONCOLOGY AND OTHER DISEASES.

Last Updated: 3:59 PM ET 06/24/22

\$152.34 +2.89 +1.93%  
Volume 8,527,800 +15%

| Year (Dec) | EPS (\$) | Price(\$)<br>High Low | EPS Rating        |               |
|------------|----------|-----------------------|-------------------|---------------|
| 2015       | 0.04     | 71 45                 | Group RS Rating   | 90            |
| 2016       | 4.82     | 68 50                 | SMR Rating        | A             |
| 2017       | 5.60     | 99 59                 | Acc/Dis Rating    | B-            |
| 2018       | 7.91     | 125 77                | Composite Rating  | 95            |
| 2019       | 8.94     | 92 62                 | Timeliness Rating | B             |
| 2020       | 10.56    | 109 62                | Growth Rate       | 21%           |
| 2021       | 12.71    | 136 101               | P/E               | 12 (0.7 X SP) |
| 2022       | 14.02    | est 10% ▼             | Mkt Cap           | \$269.20 Bil  |
| 2023       | 12.00    | est -14% ▲            | Shares            | 1767.1 Mil    |
|            |          |                       | Funds             | 37%           |



| Qtr Ended June 30, 2021 |    |      |      | Qtr Ended September 30, 2021 |    |      |      | Qtr Ended December 31, 2021 |    |      |      | Qtr Ended March 31, 2022 |    |      |     | EPS Due 7/30e |
|-------------------------|----|------|------|------------------------------|----|------|------|-----------------------------|----|------|------|--------------------------|----|------|-----|---------------|
| 3.11                    | vs | 2.34 | +33% | 3.33                         | vs | 2.83 | +18% | 3.31                        | vs | 2.92 | +13% | 3.16                     | vs | 2.89 | +9% | Earnings (\$) |
| 14.0                    | vs | 10.4 | +34% | 14.3                         | vs | 12.9 | +11% | 14.9                        | vs | 13.9 | +7%  | 13.5                     | vs | 13.0 | +4% | Sales (\$Bil) |

ABBV

Institutional Ownership

|               |     |
|---------------|-----|
| Funds         | 37% |
| Banks         | 2%  |
| Insurance Co. | 0%  |

Management Ownership

|                    |           |
|--------------------|-----------|
| Percentage Held    | 1%        |
| Outstanding Shares | 1,767 Mil |

Fund Ownership Summary

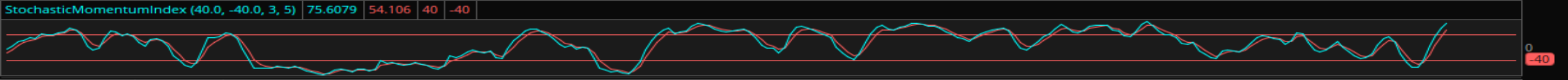
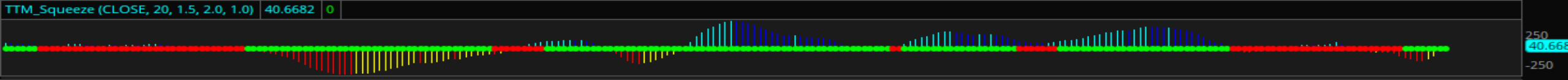
| Date   | No of Funds |
|--------|-------------|
| Jun-20 | 3374        |
| Sep-20 | 3380        |
| Dec-20 | 3495        |
| Mar-21 | 3606        |
| Jun-21 | 3636        |
| Sep-21 | 3630        |
| Dec-21 | 3748        |
| Mar-22 | 3907        |

IBD Mutual Fund Index Ownership

|                           |        |        |        |
|---------------------------|--------|--------|--------|
| JPMorgan Large Cap Gro... | 2.98%  |        |        |
| Jun-21                    | Sep-21 | Dec-21 | Mar-22 |
| -                         | -      | -      | 6.93M  |
| Janus Henderson Forty S   | 2.16%  |        |        |
| Jun-21                    | Sep-21 | Dec-21 | Mar-22 |
| -                         | -      | -      | 2.62M  |
| Fidelity Contrafund       | 0.42%  |        |        |
| Jun-21                    | Sep-21 | Dec-21 | Mar-22 |
| 5.35M                     | 3.46M  | 2.87M  | 3.44M  |
| Franklin Growth A         | 0.39%  |        |        |
| Jun-21                    | Sep-21 | Dec-21 | Mar-22 |
| 0.45M                     | 0.45M  | 0.45M  | 0.45M  |

Show Fund Ownership





| CRDO 1 Y 1D [NASDAQ] |       |           |      | D: 6/24/22         |  | O: 12.47     |  | H:12.95      |  | L: 1 |  |
|----------------------|-------|-----------|------|--------------------|--|--------------|--|--------------|--|------|--|
| Year                 | EPS   | Price(\$) |      | EPS Rating         |  |              |  | 76           |  |      |  |
| (Apr)                | (\$)  | High      | Low  | Group RS Rating    |  |              |  | 5            |  |      |  |
| 2016                 |       |           |      | SMR Rating         |  |              |  | D            |  |      |  |
| 2017                 |       |           |      | Acc/Dis Rating     |  |              |  | B-           |  |      |  |
| 2018                 |       |           |      | Composite Rating   |  |              |  | 73           |  |      |  |
| 2019                 |       |           |      | Timeliness Rating  |  |              |  | C            |  |      |  |
| 2020                 | 0.02  |           |      | Sponsorship Rating |  |              |  | D            |  |      |  |
| 2021                 | -0.09 |           |      | EPS Growth Rate    |  |              |  | N/A          |  |      |  |
| 2022                 | -0.06 | 18        | 8    | Earnings Stability |  |              |  | N/A          |  |      |  |
| 2023                 | 0.15  | est       | N/A  | P/E Ratio          |  |              |  | N/A          |  |      |  |
| 2024                 | 0.50  | est       | 233% | 5-Year P/E Range   |  |              |  | N/A          |  |      |  |
| Yield                |       | NONE      |      | Return on Equity   |  |              |  | [N/A]        |  |      |  |
| ExDiv                |       | N/A       |      | Cash Flow          |  |              |  | \$-0.07      |  |      |  |
| Book Value           |       | x5.54     |      | Debt               |  | N/A          |  | Ownership    |  |      |  |
| Inventory T/O        |       | 6.18X     |      | R&D                |  | 45.0%        |  | Mgmt         |  | 22%  |  |
| U/D Vol Ratio        |       | 0.9       |      | Alpha              |  | N/A          |  | Banks        |  | 0%   |  |
| New CEO              |       | N/A       |      | Beta               |  | N/A          |  | Funds        |  | 18%  |  |
| Top RS in Grp        |       | Symbol    |      | RS                 |  | EPS Rtg      |  | No. of Funds |  |      |  |
| Switch A             |       | SWCH      |      | 97                 |  | 58           |  | Jul-21       |  | N/A  |  |
| Radcom               |       | RDCM      |      | 78                 |  | 43           |  | Apr-21       |  | N/A  |  |
| F5                   |       | FFIV      |      | 31                 |  | 64           |  | Jan-21       |  | N/A  |  |
| GdsHldgs A           |       | GDS       |      | 27                 |  | 8            |  | Mar-22       |  | 106  |  |
| Tucows A             |       | TCX       |      | 13                 |  | 8            |  |              |  |      |  |
| Quarterly            |       | EPS(\$)   |      | %Chg               |  | Sales(\$Mil) |  | % Chg        |  |      |  |
| Oct-20               |       | -0.02     |      | N/A                |  | 14.5         |  | +7%          |  |      |  |
| Jan-21               |       | -0.03     |      | N/A                |  | 13.5         |  | 0%           |  |      |  |
| Apr-21               |       | -0.02     |      | N/A                |  | 19.8         |  | +47%         |  |      |  |
| Jul-21               |       | -0.08     |      | N/A                |  | 10.7         |  | -3%          |  |      |  |
| Oct-21               |       | -0.02     |      | N/A                |  | 26.4         |  | +83%         |  |      |  |
| Jan-22               |       | 0.02      |      | #+167%             |  | 31.8         |  | +136%        |  |      |  |
| Apr-22               |       | 0.02      |      | #+200%             |  | 37.5         |  | +90%         |  |      |  |

CRDO put in power earnings gap has been tightening on the daily while respecting the 21ema in tough market. Solid earnings growth with expected 2024 earnings up 233%. Watching for break above 13 on heavy volume

