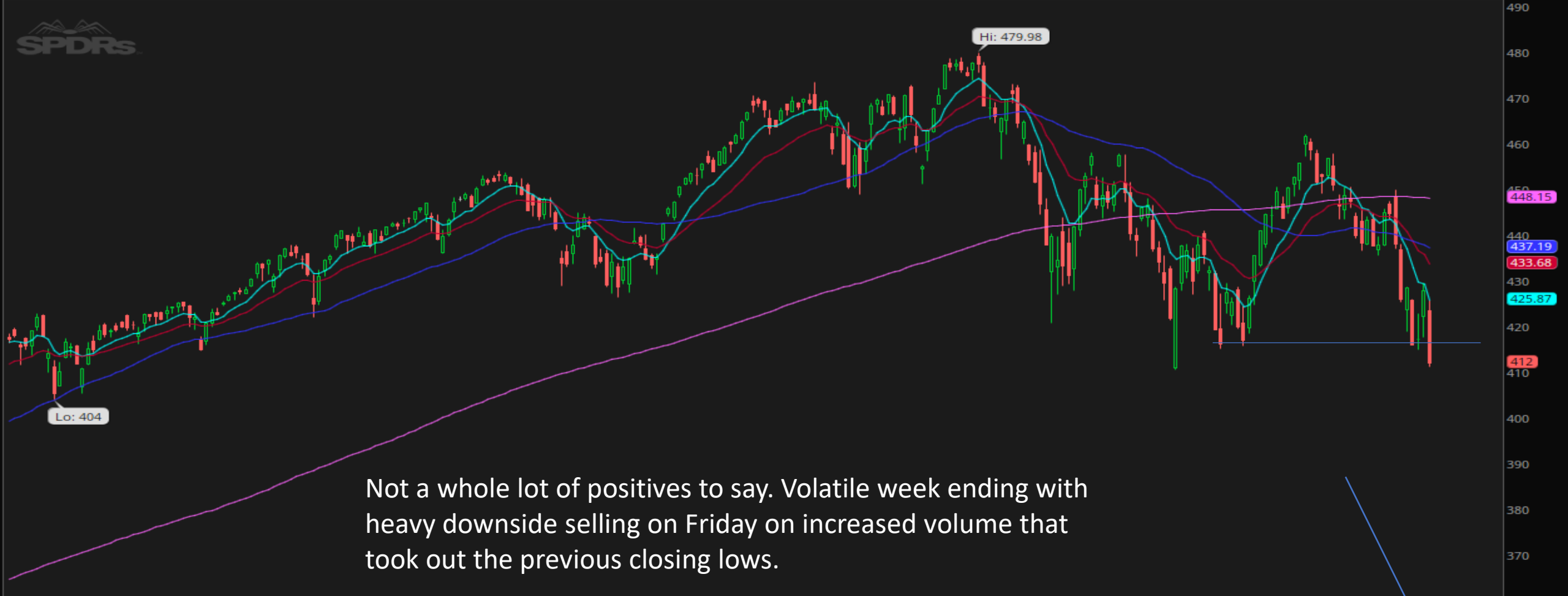
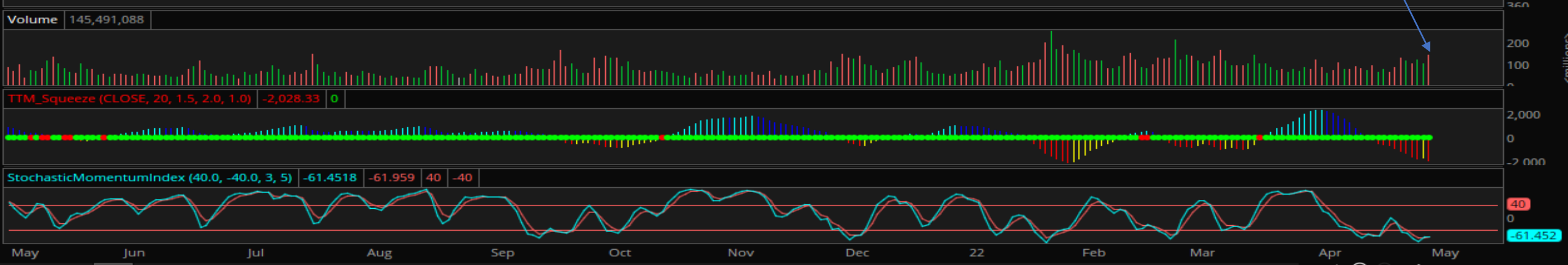


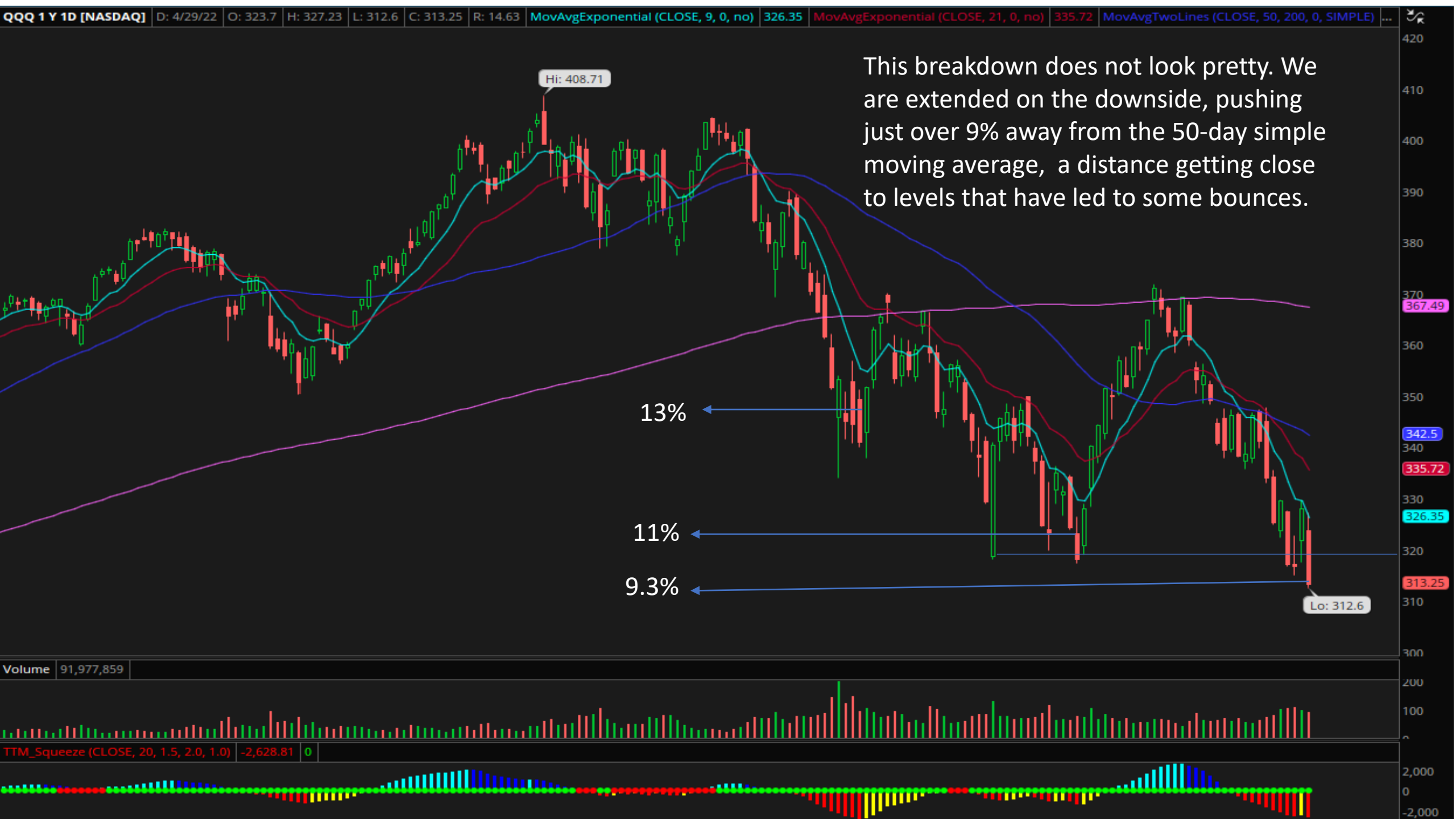
# Bullish Growth Stocks Chart Deck

Weekend of 5/1/2022

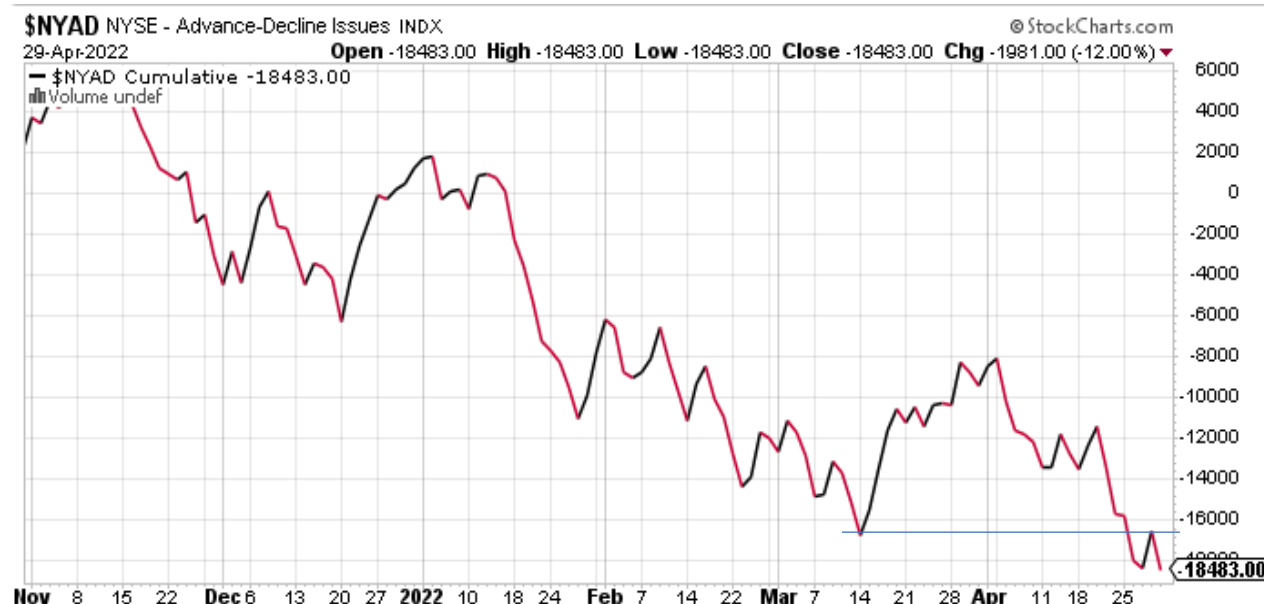


Not a whole lot of positives to say. Volatile week ending with heavy downside selling on Friday on increased volume that took out the previous closing lows.









Something that gave me caution was the NYAD and NAAD both made new lows before price last week. This was clear that breadth was not getting any better. The NAAD made new lows well before the Nasdaq did. It doesn't always work out this clean, but this is a game of probabilities, and this only stacked those odds against you if you were forcing long trades last week.

Although the base is not great, the recent relative strength is. BOX broke out when the overall market made a move off the lows but is holding its gains, bouncing off the 21ema and put in great day on Friday when everything else was getting trashed to the downside.





Box Inc CIA (BOX) NYSE Computer Sftwr-Database (170/197)

www.box.com

Options Yes

Short Interest 4.7 days -1%

Market Capitalization \$4391.6 Million

Shares in Float 134.8 Million

Shares Outstanding 143.4 Million

\$30.62 -0.36 -1.16%

Volume 8,441,100 -12%

Last Updated: 4:00 PM ET 04/29/22

HEADQUARTERS: Redwood City, CA

PHONE: 877-729-4269

IPO 1/23/2015

EPS Due 5/27/2022e

50-Day Avg Volume 1,989,000

PROVIDES CLOUD-BASED PLATFORM FOR ORGANIZATIONS TO MANAGE TH EIR CONTENT/COLLABORATE INTERNALLY/EXTERNALLY.

Off 52-Week High -7.3%

03/16/22 To repurchase up to \$150 mil worth of common stock outstanding

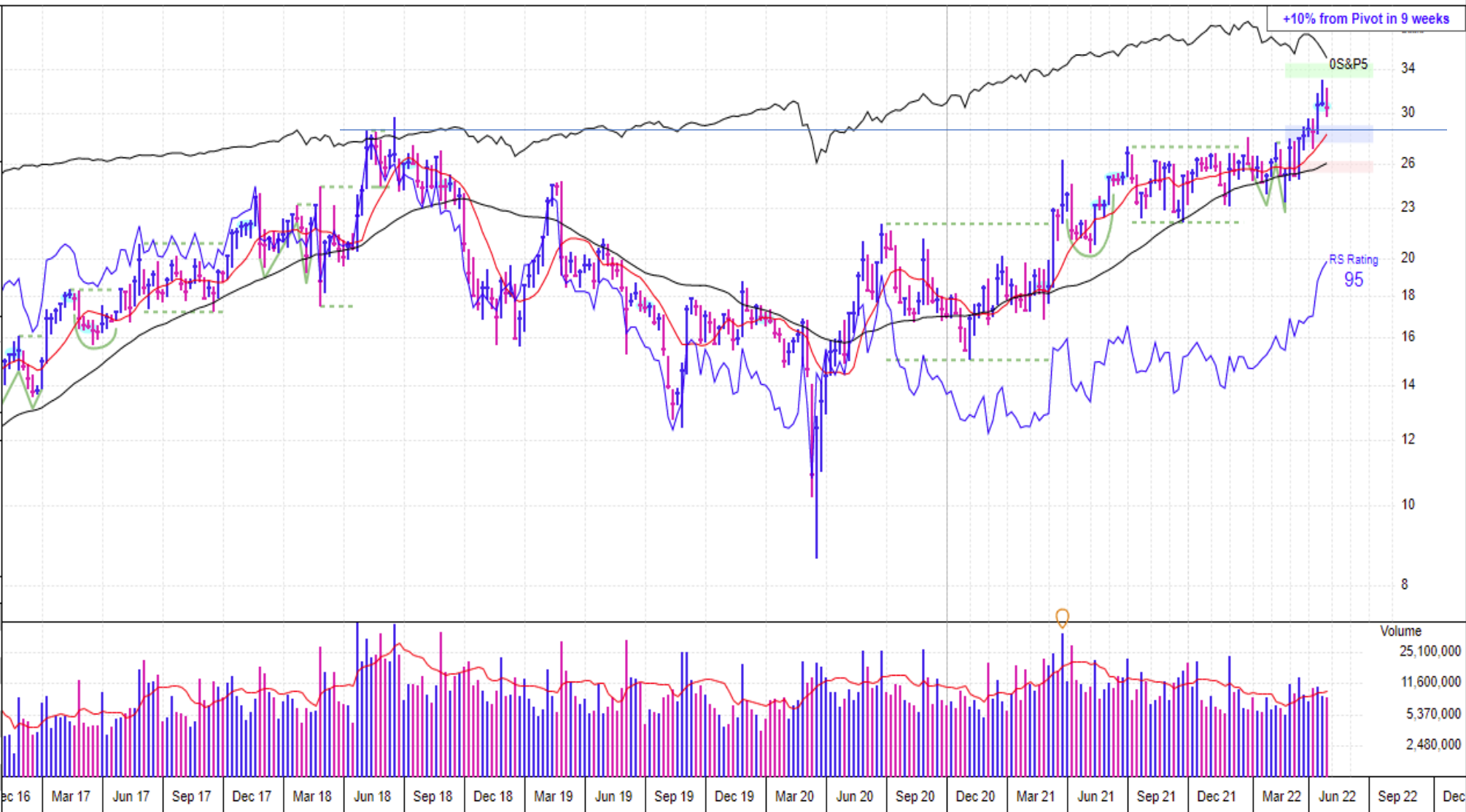
52-Week Hi-Lo \$33.04-\$20.36

Year (Jan)	EPS (\$)	Price(\$)	High	Low	EPS Rating	47
2016	-1.12	16	8		Group RS Rating	15
2017	-0.56	24	13		SMR Rating	A
2018	-0.43	29	15		Acc/Dis Rating	A
2019	-0.12	24	12		Composite Rating	93
2020	0.03	22	8		Timeliness Rating	B
2021	0.70	28	16		Sponsorship Rating	B
2022	0.85	33	23		EPS Growth Rate	N/A
2023	1.13	est	33%		Earnings Stability	N/A
2024	1.41	est	25%		P/E Ratio	36 (1.8 X SP)

Yield	NONE	Return on Equity	[N/A]
ExDiv	N/A	Cash Flow	\$0.66
Book Value	x-11.12	Debt	N/A
Inventory T/O	N/A	R&D	25.0%
U/D Vol Ratio	1.3	Alpha	0.16
New CEO	N/A	Beta	1.04

Top RS in Grp	Symbol	RS	EPS Rtg	No. of Funds
Zeta Global	ZETA	97	2	Jun-21 437
CyxtaTech	CYXT	92	22	Sep-21 445
Netscout	NTCT	87	81	Dec-21 472
ProgSftw	PRGS	84	80	
Alteryx A	AYX	69	10	Mar-22 484

Quarterly	EPS(\$)	%Chg	Sales(\$Mil)	% Chg
Apr-20	0.10	#+433%	183.6	+13%
Jul-20	0.18	+999%	192.3	+11%
Oct-20	0.20	#+999%	196.0	+11%
Jan-21	0.22	+214%	198.9	+8%
Apr-21	0.19	+90%	202.4	+10%
Jul-21	0.21	+17%	214.5	+12%
Oct-21	0.22	+10%	224.0	+14%
Jan-22	0.24	+9%	233.4	+17%



LNTH closed in the upper 58% of its range on just under 200% of normal volume on Friday on its earnings report. With a lot of market leading traits, this is one to watch and see how the stock handles this earnings candle bar next week.





Lantheus Holdings Inc (LNT) NASDAQ Medical-Products (146/197)

www.lantheus.com

Options Yes

Short Interest 1.5 days -18%

Market Capitalization \$4523.5 Million

Shares in Float 66.8 Million

Shares Outstanding 68.1 Million

\$66.41 +8.08

Volume 8,316,900 +13.85%

Last Updated: 4:00 PM ET 04/29/22

HEADQUARTERS: North Billerica, MA PHONE: 978-671-8001 IPO 6/25/2015 EPS Due 7/28/2022e

DEVELOPS DIAGNOSTIC MEDICAL IMAGING AGENTS AND PRODUCTS FOR THE DIAGNOSIS OF CARDIOVASCULAR/OTHER DISEASES.

04/29/22 Expect Q2 2022 adjusted earnings of \$0.67 to \$0.73 per share on revenues of \$200 mil to \$215 mil

50-Day Avg Volume 1,469,800

Off 52-Week High 3.5%

52-Week Hi-Lo \$64.14-\$19.30

Year (Dec)	EPS (\$)	Price(\$)	High	Low	EPS Rating	Group RS Rating
2015	0.46▲	10	2		SMR Rating	B
2016	0.72▲	10	1		Acc/Dis Rating	A
2017	1.00▲	24	7		Composite Rating	98
2018	1.13▲	24	12		Timeliness Rating	A
2019	1.17	29	14		Sponsorship Rating	C
2020	0.47	20	8		EPS Growth Rate	-14%
2021	0.49	31	13		Earnings Stability	55
2022	2.82	est	476%		P/E Ratio	42 (2.1 X SP)
2023	3.20	est	13%		5-Year P/E Range	7-103

Yield NONE

ExDiv N/A

Book Value x9.74

Inventory T/O 12.00X

U/D Vol Ratio 2.2

New CEO 08/2015

Top RS in Grp

Symbol RS EPS Rtg No. of Funds

Veru VERU 99 2 Jun-21 383

Utd Guardn UG 97 86 Sep-21 386

MeridianBio VIVO 95 72 Dec-21 405

EstabLabs ESTA 90 1 Mar-22 442

IntersectEnt XENT 89 6

Quarterly EPS(\$)

%Chg Sales(\$Mil)

% Chg

Jun-20 0.10 -63% 66.0 -23%

Sep-20 0.04 -86% 88.5 +3%

Dec-20 0.07 -79% 94.2 +5%

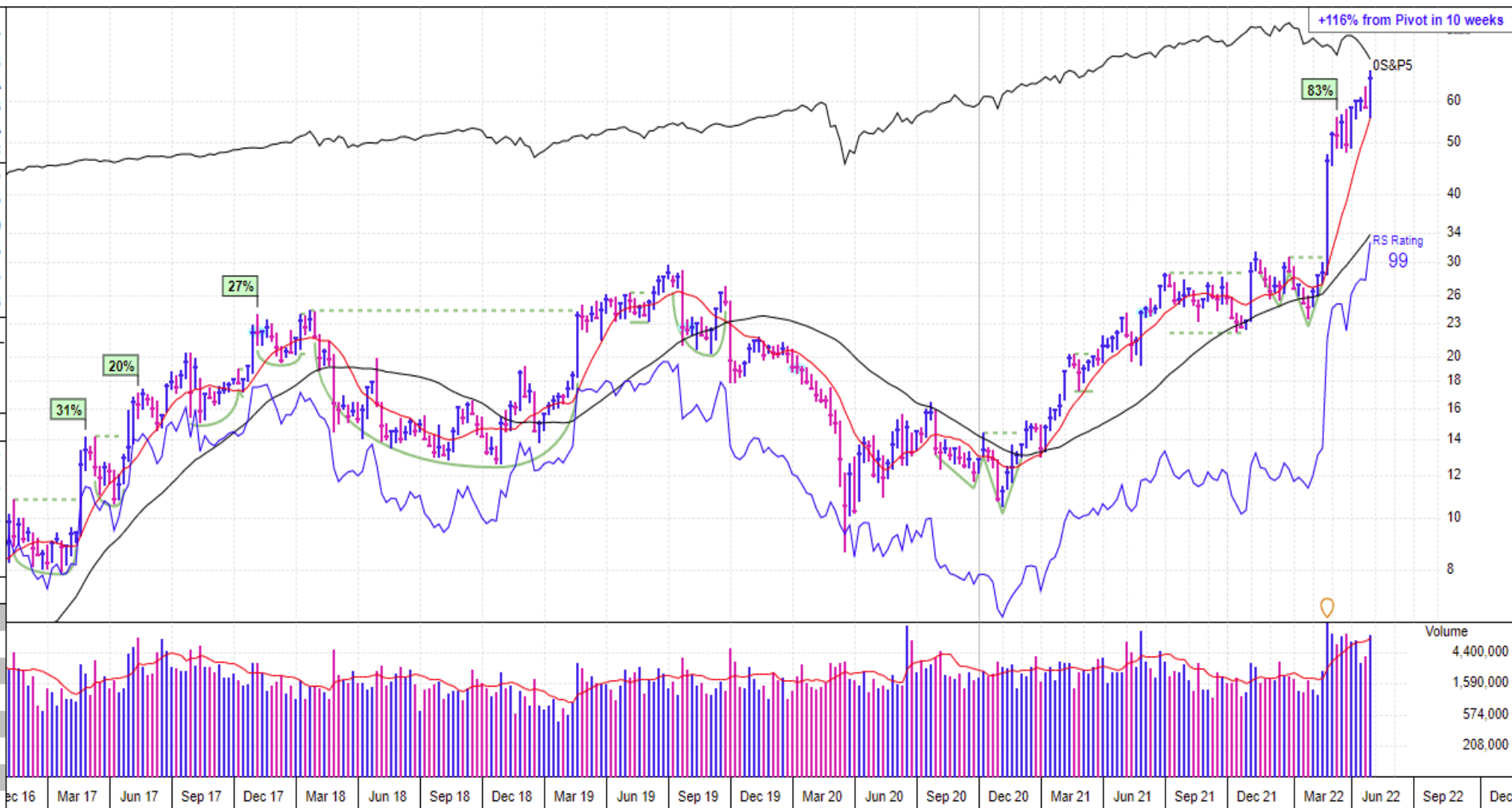
Mar-21 0.05 -86% 92.5 +2%

Jun-21 0.11 +10% 101.1 +53%

Sep-21 0.08 +100% 102.1 +15%

Dec-21 0.25 +257% 129.6 +38%

Mar-22 \* 0.97 +999% 208.9 +126%





Sigma Lithium Corp (SGML) NASDAQ Mining-Metal Ores (19/197)  
www.sigmalithiumresources.com

Options No  
Short Interest 0.5 days -23%

Market Capitalization \$1379.8 Million  
Shares in Float  
Shares Outstanding 87.3 Million

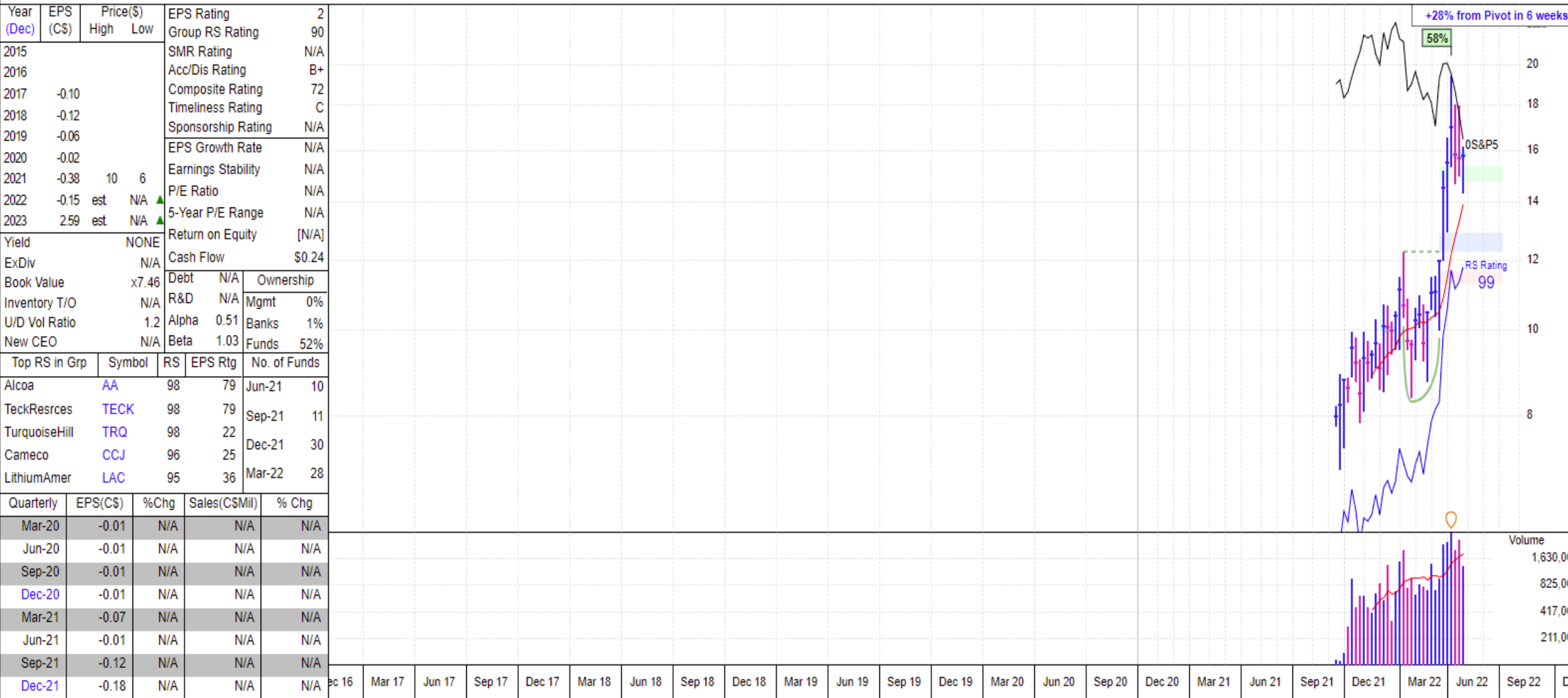
\$15.80 +0.09 +0.57%  
Volume 1,369,500 -25%  
Last Updated: 3:59 PM ET 04/29/22

HEADQUARTERS: Vancouver, BC PHONE: 5511-2985-00 EPS Due 4/28/2022e

CANADIAN-BASED LITHIUM MINING COMPANY WITH FLAGSHIP PROJECT LOCATED IN MINAS, GERAIS.

04/29/22 No news available

50-Day Avg Volume 368,300  
Off 52-Week High -18.9%  
52-Week Hi-Lo \$19.48-\$6.96



Many view the semiconductor space as a leading indicator for the economy. Unable to hold the 250 level, now testing the 220 level is not a good overall sign. As of now, this group is in a solid downtrend.

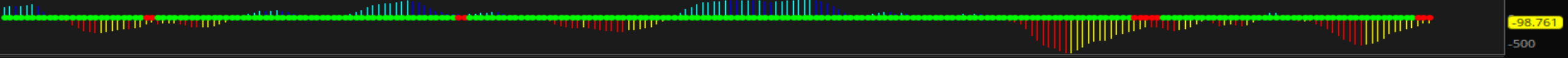




Volume 4,366,400



TTM\_Squeeze (CLOSE, 20, 1.5, 2.0, 1.0) -98.7607 0



StochasticMomentumIndex (40.0, -40.0, 3, 5) -14.1126 -14.0385 40 -40





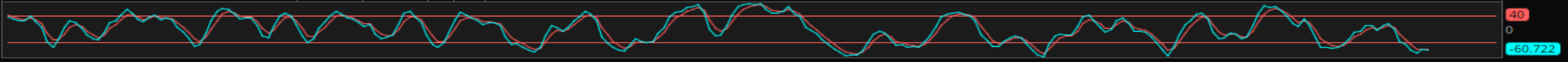
Volume 8,724,626



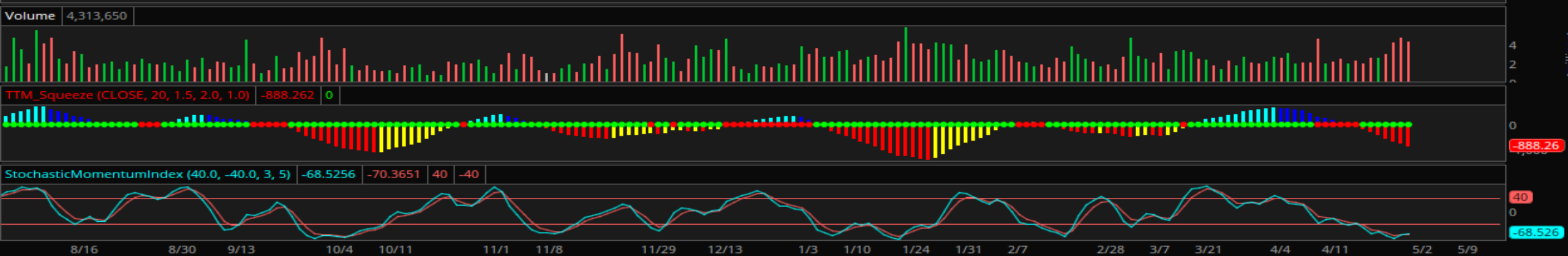
TTM\_Squeeze (CLOSE, 20, 1.5, 2.0, 1.0) -285.87 0



StochasticMomentumIndex (40.0, -40.0, 3, 5) -60.7218 -59.5068 40 -40







	P	#	Symbol	Name	Type	Event Date	Count (last 90)	Current Price	Price \$ Chg	Price % Chg	% Off High	Vol % Chg vs 50-Day	50-Day Avg Vol (1000s)	50-Day Avg \$ Vol	Market Cap (mil)	Comp Rating	EPS Rating	RS Rating	A/D Rating
		1	DEO	Diageo Plc Ads	S	2022-04-28(w)	15	198.68	-2.97	-1.5	-10.96	-0.6	403	80,664	127,097.0	95	80	80	A-
		2	FR	First Industrial Rlty Tr	S	2022-04-19(w)	10	58.00	-5.65	-8.9	-13.09	166.3	732	43,819	7,656.1	82	62	83	D
		3	RELX	RELX Plc Ads	S	2022-04-28(w)	26	29.45	-0.87	-2.9	-9.97	-22.1	1,315	38,676	56,750.2	91	77	74	C
		4	AZPN	Aspen Technology Inc	S	2022-04-29(d)	13	158.54	-3.58	-2.2	-6.31	-27.6	434	68,536	10,568.4	88	77	90	B
		5	LSI	Life Storage Inc	S	2022-04-20(d)	9	132.49	-9.57	-6.7	-14.22	69.7	496	66,947	11,155.5	94	94	89	C-
		6	ACGL	Arch Capital Group Ltd	S	2022-04-14(w)	6	45.67	-1.09	-2.3	-9.97	-0.1	2,120	97,272	17,288.7	91	94	89	C
		7	HIG	Hartford Finl Svcs Grp	S	2022-04-19(w)	6	69.93	-1.34	-1.9	-10.54	44.4	2,143	152,671	23,192.0	84	84	82	D-
		8	RSG	Republic Services Inc	S	2022-04-29(w)	20	134.27	-3.84	-2.8	-8.02	28.8	1,265	167,877	42,400.6	91	80	89	C+
		9	HBP	Huttig Building Products	S	2022-04-29(w)	24	10.68	0.00	0.0	-5.90	117.5	398	4,409	291.9	93	73	98	C+
		10	EW	Edwards Lifesciences	S	2022-04-20(w)	7	105.78	-3.99	-3.6	-19.70	23.0	2,653	281,649	65,922.8	78	83	71	D-
		11	RGP	Resources Connection Inc	S	2022-04-27(w)	9	17.19	-0.42	-2.4	-14.73	182.6	170	3,039	569.1	94	99	87	D-
		12	BLU	Bellus Health Inc	S	2022-04-28(w)	15	8.06	0.04	0.5	-18.09	-1.4	725	5,746	857.5	53	8	99	B
		13	GPK	Graphic Packaging Hldg	S	2022-04-19(d)	7	21.80	-0.11	-0.5	-2.02	2.1	2,978	64,312	6,721.1	99	93	92	C+
		14	EXR	Extra Space Storage Inc	S	2022-04-19(w)	9	190.00	-18.04	-8.7	-16.97	91.7	675	130,910	25,507.7	96	90	85	D
		15	CUBE	Cubesmart	S	2022-04-25(w)	10	47.51	-4.49	-8.6	-17.14	168.2	1,445	71,079	10,642.3	81	85	64	D
		16	DKL	Delek Logistics Prtnr Lp	S	2022-04-20(w)	4	49.99	-1.01	-2.0	-8.41	-29.7	74	3,689	2,172.5	90	74	91	D+
		17	BJ	B J S Whlsl Club Hldgs	S	2022-04-28(w)	17	64.35	-2.90	-4.3	-13.15	-19.4	1,781	115,411	8,705.8	94	88	94	B
		18	TUFN	Tufin Software Tech Ltd	S	2022-04-29(w)	15	12.90	0.11	0.9	-4.44	62.9	873	11,204	487.0	69	8	97	B
		19	PING	Ping Identity Hldg Corp	S	2022-04-13(d)	3	26.13	-1.17	-4.3	-14.05	-54.8	1,282	33,535	2,189.4	89	41	93	A+
		20	EW CZ	European Wax Center Cl A	S	2022-04-29(w)	12	27.45	-0.53	-1.9	-11.49	2.6	392	10,919	1,742.1	92	73	95	C+
		21	AFL	A F L A C Inc	S	2022-04-11(d)	1	57.28	-1.98	-3.3	-14.76	81.3	2,751	159,920	37,195.8	71	83	74	E
		22	ADP	Automatic DataProcessing	S	2022-04-28(w)	9	218.18	-11.50	-5.0	-12.36	31.0	1,985	436,600	91,645.4	88	86	87	C
		23	HRL	Hormel Foods Co	S	2022-04-11(w)	1	52.39	-1.14	-2.1	-4.94	51.0	1,987	105,529	28,552.4	91	71	91	B-
		24	MMC	Marsh & McLennan	S	2022-04-20(w)	13	161.70	-10.01	-5.8	-11.71	25.2	2,140	349,255	81,159.3	89	86	88	B-
		25	MRK	Merck & Co Inc	S	2022-04-29(d)	12	88.69	0.11	0.1	-2.96	41.6	11,115	996,387	224,191.6	98	93	90	A-
		26	WTRG	Essential Utilities Inc	S	2022-04-13(w)	8	44.76	-1.72	-3.7	-17.00	66.7	1,210	55,408	11,324.9	62	58	59	E
		27	SCI	Service Corp Intl	S	2022-04-14(w)	7	65.61	-1.99	-2.9	-8.96	-17.2	983	63,018	10,547.5	93	89	88	A
		28	RTX	Raytheon Technologies	S	2022-04-13(w)	3	94.91	-3.17	-3.2	-10.48	-9.6	6,481	617,693	141,637.0	81	66	88	D-
		29	NGLOY	Anglo American Plc Adr	S	2022-04-18(d)	5	22.30	0.31	1.4	-19.78	-58.5	313	6,997	55,214.8	-	85	86	E
		30	CHD	Church & Dwight Inc	S	2022-04-12(w)	4	97.56	-2.84	-2.8	-7.33	25.9	1,324	129,442	23,677.3	78	81	86	D-
		31	GSK	Glaxosmithkline Plc Adr	S	2022-04-11(w)	3	45.28	-0.46	-1.0	-3.60	-11.9	4,993	226,793	113,358.5	97	78	88	B
		32	VIVO	Meridian Bioscience Inc	S	2022-04-14(w)	6	25.59	-0.02	-0.1	-10.90	-32.7	358	9,079	1,114.2	82	72	95	B-
		33	AVD	American Vanguard Corp	S	2022-04-11(w)	1	21.40	-0.18	-0.8	-11.75	-11.5	268	5,816	662.2	94	52	96	A-
		34	VGR	Vector Group Ltd	S	2022-04-12(w)	5	12.72	-0.38	-2.9	-4.93	-29.4	1,003	12,807	1,957.2	93	94	94	B+
		35	WM	Waste Management Inc	S	2022-04-27(w)	14	164.44	-5.21	-3.1	-3.37	18.2	1,889	311,383	68,276.6	91	84	90	C+
		36	SBAC	S B A Communications Cp	S	2022-04-21(w)	6	347.11	-12.13	-3.4	-11.26	-2.0	703	244,469	37,493.8	68	44	87	D+
		37	MET	Metlife Inc	S	2022-04-20(w)	5	65.68	-2.09	-3.1	-10.25	-12.2	4,399	289,537	54,191.1	77	88	84	E
		38	ULTA	Ulta Beauty Inc	S	2022-04-11(d)	1	396.80	-20.62	-4.9	-9.54	36.3	695	277,918	20,763.4	91	87	91	D
		39	VRSK	Verisk Analytics Inc	S	2022-04-29(d)	9	204.05	-8.64	-4.1	-11.88	17.1	1,295	267,591	32,909.6	86	84	85	B-
		40	FNV	Franco Nevada Corp	S	2022-04-11(w)	1	151.16	-1.93	-1.3	-10.73	-38.9	777	117,239	28,900.6	93	85	89	E

299 items

Updated: 4:00 PM ET 04/29/22

Play

	P	#	Symbol	Name	Type	Current Price	Price \$ Chg	Price % Chg	% Off High	Vol % Chg vs 50-Day	50-Day Avg Vol (1000s)	50-Day Avg \$ Vol	Market Cap (mil)	Comp Rating	EPS Rating	RS Rating	A/D Rating	SMR Rating	Ind Group Rank
		1	ARCH	Arch Resources Inc	S	166.38	-2.67	-1.6	-5.65	-7.5	1,001	166,346	2,575.1	99	73	99	A-	A	1
		2	AMR	Alpha Metallurgical Res	S	154.74	-3.00	-1.9	-6.04	-31.3	572	88,913	2,870.0	99	73	99	A-	A	1
		3	HCC	Warrior Met Coal Inc	S	34.07	-0.85	-2.4	-20.68	-20.5	992	33,940	1,754.7	99	73	98	B-	A	1
		7	MOS	Mosaic Company	S	62.42	-2.90	-4.4	-21.27	-36.4	10,896	681,844	22,989.8	99	78	98	C-	A	2
		8	CF	C F Industries Holdings	S	96.83	-1.71	-1.7	-14.68	-35.8	4,697	449,543	20,248.4	99	99	98	C+	A	2
		9	NTR	Nutrien Ltd	S	98.25	-3.05	-3.0	-16.20	0.9	4,511	446,575	56,129.1	99	99	98	C-	A	2
		10	FMC	F M C Corp	S	132.54	-2.16	-1.6	-5.99	-6.6	1,076	143,527	16,660.1	99	94	95	C-	A	2
		11	SQM	Sociedad Quimica Y Minra	S	73.80	-0.61	-0.8	-18.79	-27.6	1,744	129,076	21,080.0	99	79	97	B-	A	2
		17	OXY	Occidental Petroleum	S	55.09	-1.94	-3.4	-13.33	-50.0	38,412	2,117,16	51,457.5	99	73	99	A-	A	5
		18	COP	Conocophillips	S	95.52	-2.03	-2.1	-11.16	0.4	8,701	834,844	123,798.8	99	73	97	D	A	5
		19	APA	A P A Corp	S	40.93	-0.52	-1.3	-9.49	34.7	9,522	394,372	17,126.3	99	73	98	D-	B	5
		20	HES	Hess Corp	S	103.07	-2.08	-2.0	-11.95	-25.7	2,708	278,258	32,081.8	99	71	95	B	B	5
		21	OVV	Ovintiv Inc	S	51.19	-1.08	-2.1	-10.52	-26.5	4,569	234,250	13,364.9	99	83	98	B-	A	5
		22	MUR	Murphy Oil Corp	S	38.08	-0.81	-2.1	-14.68	7.9	1,922	73,505	5,916.3	99	73	98	D	B	5
		23	CNQ	Canadian Natural Res Ltd	S	61.87	-0.76	-1.2	-12.37	-11.1	3,514	216,780	72,740.6	99	79	98	D+	A	6
		24	CVX	Chevron Corp	S	156.67	-5.12	-3.2	-10.35	-14.3	17,104	2,690,27	307,820.4	99	73	97	C+	A	7
		25	XOM	Exxon Mobil Corp	S	85.25	-1.95	-2.2	-6.84	10.1	31,228	2,684,30	360,238.6	99	73	96	B-	A	7
		26	MRO	Marathon Oil Corporation	S	24.92	-0.54	-2.1	-10.90	-33.0	22,027	544,756	18,210.7	99	73	98	C+	A	7
		27	EQT	E Q T Corp	S	39.75	-0.84	-2.1	-12.64	-22.7	10,466	412,537	14,946.9	99	75	99	A	B	7
		28	SU	Suncor Energy Inc	S	35.94	-0.95	-2.6	-2.71	10.2	8,136	293,967	52,366.5	99	73	98	B-	B	7
		29	CVE	Cenovus Energy Inc	S	18.48	-0.93	-4.8	-5.62	8.5	13,484	250,733	37,285.5	99	63	99	B-	C	7
		30	NFE	New Fortress Energy Cl A	S	38.78	-1.23	-3.1	-21.34	-50.7	1,455	56,510	8,022.1	99	64	97	B+	B	7
		34	DVN	Devon Energy Corp	S	58.17	-1.72	-2.9	-11.12	-38.8	13,051	744,163	38,636.5	99	73	98	D+	A	8
		35	PXD	Pioneer Natural Resource	S	232.47	-2.51	-1.1	-10.59	-13.6	2,568	596,750	56,248.0	99	99	96	C+	A	8
		36	MTDR	Matador Resources Co	S	48.82	-1.65	-3.3	-17.63	-27.1	2,507	122,743	5,762.9	99	99	96	D+	A	8
		37	PDCE	P D C Energy Inc	S	69.74	-1.82	-2.5	-12.16	-21.3	1,160	80,061	6,680.7	99	75	97	D+	A	8
		38	CRK	Comstock Resources	S	17.03	0.14	0.8	-8.19	-2.9	3,815	64,606	3,966.6	99	74	99	A-	A	8
		39	CIVI	Civitas Resources Inc	S	58.62	-1.53	-2.5	-12.17	-52.9	993	57,770	4,979.0	99	73	96	B-	B	8
		40	TALO	Talos Energy Inc	S	18.17	-0.69	-3.7	-11.80	-56.8	1,442	25,852	1,499.4	99	66	98	B+	C	8
		41	VNOM	Viper Energy Partners Lp	S	28.73	-0.24	-0.8	-11.19	-5.9	532	15,324	4,817.3	99	75	96	B	B	8
		55	IMKTA	Ingles Markets Inc Cl A	S	93.12	-0.93	-1.0	-8.69	19.6	114	10,755	1,768.7	99	96	97	B	C	9
		60	TS	Tenaris Sa Adr	S	30.18	0.27	0.9	-9.31	8.4	3,078	93,069	17,814.3	99	79	96	C	A	12
		67	VLO	Valero Energy Corp	S	111.48	-4.05	-3.5	-3.95	28.1	4,633	518,850	45,629.1	99	73	97	B	C	15
		75	EGLE	Eagle Bulk Shipping Inc	S	62.24	-1.56	-2.4	-13.84	-50.9	441	27,597	848.5	99	73	97	D+	A	14
		140	CSL	Carlisle Cos Inc	S	259.36	9.43	3.8	-1.26	208.8	349	95,159	13,507.2	99	92	94	C+	A	34
		143	GPK	Graphic Packaging Hldg	S	21.80	-0.11	-0.5	-2.02	2.1	2,978	64,312	6,721.1	99	93	92	C+	B	32
		161	MAR	Marriott International	S	177.52	-7.04	-3.8	-9.38	3.9	2,520	445,095	57,926.7	99	79	92	B-	A	41
		164	AZN	Astrazeneca Plc Ads	S	66.40	-0.82	-1.2	-7.39	34.1	7,976	533,895	188,310.4	99	77	91	C+	A	38
		178	IIN	Insteel Industries Inc	S	42.42	-0.47	-1.1	-8.08	1.1	94	4,046	823.5	99	93	92	C+	A	44

197 items

Updated: 4:00 PM ET 04/29/22

P	#	Symbol	Name	Type	Number of Stocks	Ind Group Rank	Ind Grp Rnk Last Week	Price % Chg	Ind Grp Rnk 3 Mo	Ind Grp Rnk 6 Mo	% Chg YTD	Ind Mkt Val (bil)
	70	G1319	Energy-Coal	IG	12	1	4	-2.2	2	1	78.63	196.0
	27	G1800	Chemicals-Agricultural	IG	14	2	1	-2.6	10	29	26.26	171.0
	147	G1311	Oil&Gas-Royalty Trust	IG	14	3	2	-0.8	37	50	13.69	0.0
	141	G1381	Oil&Gas-Drilling	IG	11	4	5	-1.4	15	11	76.05	42.0
	144	G1315	Oil&Gas-Intl Expl&Prod	IG	15	5	3	-2.3	4	5	48.12	294.0
	140	G1312	Oil&Gas-Cdn Expl&Prod	IG	6	6	6	-2.1	1	6	39.53	84.0
	143	G1317	Oil&Gas-Integrated	IG	22	7	8	-2.4	5	17	40.93	18,301.0
	149	G1310	Oil&Gas-U S Expl&Prod	IG	58	8	12	-2.7	3	2	25.51	335.0
	165	G5411	Retail-Super/Mini Mkts	IG	13	9	11	-2.0	12	47	9.05	109.0
	119	G2721	Media-Periodicals	IG	3	10	9	6.7	6	67	26.3	59.0
	142	G1380	Oil&Gas-Field Services	IG	31	11	10	-2.3	8	31	28.02	111.0
	173	G3312	Steel-Producers	IG	16	12	7	-4.2	129	55	31.18	285.0
	134	G5022	Medical-Whlsle Drg/Suppl	IG	7	13	13	-3.5	25	158	14.66	103.0
	189	G4411	Transportation-Ship	IG	28	14	16	-3.1	7	21	13.45	28.0
	146	G2900	Oil&Gas-Refining/Mktg	IG	29	15	19	-2.6	9	90	22.55	244.0
	148	G4922	Oil&Gas-Transprt/Pipeline	IG	55	16	22	-3.3	19	27	15.86	508.0
	174	G3313	Steel-Specialty Alloys	IG	9	17	14	-3.4	135	166	20.56	27.0
	145	G3533	Oil&Gas-Machinery/Equip	IG	21	18	15	1.7	54	46	17.9	52.0
	138	G1099	Mining-Metal Ores	IG	37	19	17	-2.4	67	71	7.32	864.0
	155	G8077	Retail-Department Stores	IG	6	20	31	-2.0	38	7	19.91	31.0
	194	G4920	Utility-Gas Distribution	IG	10	21	21	-2.2	63	188	9.97	42.0
	34	G2751	Comml Svcs-Document Mgmt	IG	5	22	119	-2.9	26	82	6.07	18.0
	137	G1040	Mining-Gold/Silver/Gems	IG	74	23	20	-0.9	167	168	5.32	279.0
	88	G2070	Food-Confectionery	IG	5	24	27	-1.3	53	120	8.45	131.0
	192	G4942	Utility-Diversified	IG	30	25	23	-2.7	44	161	2.56	954.0
	90	G2041	Food-Grain & Related	IG	5	26	25	-2.1	24	135	9.95	77.0
	1	G3722	Aerospace/Defense	IG	60	27	33	-2.9	91	122	1.1	857.0
	193	G4911	Utility-Electric Power	IG	31	28	28	-3.1	57	153	-2.18	1,461.0
	183	G2100	Tobacco	IG	8	29	29	-1.3	59	176	3.92	364.0
	101	G6330	Insurance-Prop/Cas/Titl	IG	65	30	32	-2.2	50	93	3.7	514.0
	175	G4811	Telecom Svcs- Foreign	IG	27	31	26	-3.0	52	110	3.89	7,358.0
	150	G2621	Paper & Paper Products	IG	14	32	36	-0.9	78	53	2.64	79.0
	197	G5040	Wholesale-Food	IG	9	33	38	-2.3	104	174	-7.07	64.0
	60	G9900	Diversified Operations	IG	21	34	30	0.3	55	126	2.49	2,978.0
	2	G1000	Agricultural Operations	IG	22	35	24	-2.6	86	116	3.66	76.0
	123	G2830	Medical-Ethical Drugs	IG	31	36	35	-2.8	97	91	-12.4	1,624.0
	135	G5091	Metal Prds-Distributor	IG	3	37	18	-5.3	181	182	14.15	19.0
	122	G1005	Medical-Diversified	IG	6	38	43	-2.2	98	54	-8.7	1,517.0
	16	G2085	Beverages-Alcoholic	IG	19	39	47	-1.0	85	179	-8.73	805.0
	162	G8076	Retail-Major Disc Chains	IG	4	40	41	-4.1	101	42	-2.38	1,429.0



ipo: 669 items		Updated: Today 01:04 PM ET		<div><div><div></div><div>Play</div><div></div><div></div><div></div></div></div>													
	P	#	Symbol	Name	Type	Current Price	Company Description	Sector	Industry Name	Ind Group Rank	Ind Group RS	EPS Rating	RS Rating	% Off High	Comp Rating		
		1	HRT	Hireright Holdings Corp	S	17.29	PROVIDES TECHNOLOGY-DRIVEN WORKFO...	SOFTWARE	Computer Sftwr-Security	63	B+	73	92	-11.15	98		
		2	ACI	Albertsons Companies Inc	S	31.28	OPERATES 2,277 STORES UNDER 20 ICONI...	RETAIL	Retail-Super/Mini Mkts	9	A+	94	95	-17.66	97		
		3	BSBK	Bogota Financial Corp	S	10.80	HOLDING COMPANY FOR BOGOTA SAVINGS...	BANKS	Banks-Northeast	64	B+	70	88	-2.70	96		
		4	ZIM	ZIM Integ Shipping Svcs	S	55.63	ISRAEL-BASED ASSET-LIGHT CONTAINER LI...	TRANSPRT	Transportation-Ship	14	A+	84	98	-29.54	96		
		5	NREF	Nexpoint Real Estate Fin	S	23.48	REIT THAT ORIGINATES AND INVESTS IN M...	REAL EST	Finance-Mortgage REIT	99	C+	64	93	-2.04	95		
		6	HCDI	Harbor Custom Developmnt	S	2.82	ACQUIRES, DEVELOPS LAND FOR THE CON...	REAL EST	Real Estate Dvlpmnt/Ops	47	A-	73	93	-24.80	94		
		7	HRMY	Harmony Biosciences Hldg	S	45.04	DEVELOPS AND COMMERCIALIZES THERAP...	MEDICAL	Medical-Biomed/Biotech	111	C+	80	97	-16.59	94		
		8	MNTK	Montauk Renewables Inc	S	11.36	DEVELOPS, OWNS AND OPERATES RENEW...	ENERGY	Energy-Alternative/Other	51	B+	73	94	-18.86	94		
		9	PAX	Patria Investments Cl A	S	16.31	CAYMAN ISLANDS BASED COMPANY ENGA...	FINANCE	Finance-Investment Mgmt	110	C+	95	83	-16.32	94		
		10	STER	Sterling Check Corp	S	25.98	PROVIDES TECHNOLOGY-ENABLED BACKG...	SOFTWARE	Computer Sftwr-Security	63	B+	80	93	-10.38	94		
		11	VTRU	Vitru Ltd	S	15.48	BRAZILIAN PROVIDER OF DISTANCE LEARN...	CONSUMER	Consumer Svcs-Education	57	B+	80	90	-16.23	94		
		12	RWAY	Runway Growth Finance	S	14.37	OPERATES AS A VENTURE CAPITAL FIRM T...	FINANCE	Finance-Commercial Loans	97	C+	89	91	-3.69	93		
		13	CNM	Core & Main Inc Cl A	S	23.76	DISTRIBUTES WATER, SEWER, STORM DRA...	BUILDING	Bldg-Constr Prds/Misc	134	C-	98	64	-26.98	92		
		14	EW CZ	European Wax Center Cl A	S	27.45	PROVIDES WAXING EXPERIENCE BY TRAIN...	CONSUMER	Cosmetics/Personal Care	106	C+	73	95	-11.49	92		
		15	HUDI	Huadi International Grp	S	23.00	CHINESE MANUFACTURER OF STAINLESS ...	METALS	Steel-Producers	12	A+	71	99	-35.57	91		
		16	REYN	Reynolds Consumer Prdcts	S	29.59	MANUFACTURES AND DISTRIBUTES COOKI...	MISC	Containers/Packaging	53	B+	63	83	-8.36	91		
		17	TRIN	Trinity Capital Inc	S	16.81	OPERATES AS VENTURE CAPITAL INVESTM...	FINANCE	Finance-Investment Mgmt	110	C+	67	90	-14.41	91		
		18	FINW	Finwise Bancorp	S	15.37	OPERATES AS A HOLDING COMPANY FOR F...	BANKS	Banks-West/Southwest	98	C+	76	88	-29.69	90		
		19	BON	Bon Natural Life Ltd	S	5.16	CHINA-BASED MANUFACTURER OF PERSO...	CONSUMER	Cosmetics/Personal Care	106	C+	99	83	-70.68	89		
		20	DRVN	Driven Brands Hldgs Inc	S	27.89	PROVIDES AUTOMOTIVE SERVICES LIKE PA...	RETAIL	Retail/Whlsle-Automobile	125	C	95	62	-19.44	89		
		21	EE	Excelerate Energy Cl A	S	27.01	PROVIDES LIQUEFIED NATURAL GAS DISTR...	UTILITY	Utility-Gas Distribution	21	A	30	80	-7.18	89		
		22	FA	First Advantage Corp	S	17.36	PROVIDES TECHNOLOGY SOLUTIONS FOR ...	BUSINS SVC	Comml Svcs-Staffing	71	B	73	64	-29.80	89		
		23	KNBE	KnowBe4 Inc Cl A	S	23.80	DEVELOPS CLOUD-BASED SOFTWARE THA...	SOFTWARE	Computer Sftwr-Security	63	B+	80	84	-35.09	89		
		24	PECO	Phillips Edison & Co Cl B	S	33.86	REIT THAT OWNS AND OPERATES OMNICH...	REAL EST	Finance-Property REIT	54	B+	52	91	-6.85	89		
		25	PX	P10 Inc Cl A	S	12.10	PROVIDES MULTI-ASSET CLASS PRIVATE M...	FINANCE	Finance-Investment Mgmt	110	C+	81	74	-20.90	89		
		26	KRT	Karat Packaging Inc	S	18.35	MANUFACTURES AND DISTRIBUTE PLASTIC...	MISC	Containers/Packaging	53	B+	93	64	-29.18	88		
		27	ASO	Academy Sports & Outdoor	S	37.36	OPERATES 259 STORES ACROSS 16 CONTI...	RETAIL	Retail-Leisure Products	180	D-	98	82	-26.86	87		
		28	SSBK	Southern States Bancshr	S	22.95	HOLDING COMPANY FOR SOUTHERN STAT...	BANKS	Banks-Southeast	74	B	78	91	-11.93	87		
		29	AGTI	Agiliti Inc	S	19.74	PROVIDES SUSTAINABLE MEDICAL EQUIPM...	MEDICAL	Medical-Services	127	C-	70	86	-25.11	86		
		30	RYAN	Ryan Specialty Grp Cl A	S	36.99	PROVIDER OF SPECIALTY PRODUCTS AND ...	INSURANCE	Insurance-Brokers	105	C+	62	90	-12.82	86		
		31	ARIS	Aris Water Solutions Cl A	S	16.94	PROVIDES INFRASTRUCTURE AND SOLUTI...	MACHINE	Pollution Control	76	B	41	96	-13.92	85		
		32	HYW	Hywin Holdings Ltd Ads	S	7.10	CHINESE PROVIDER OF WEALTH MANAGE...	FINANCE	Finance-Investment Mgmt	110	C+	80	92	-13.94	85		
		33	CLEU	China Liberal Edu Hldgs	S	1.48	CHINA-BASED CO THAT PROVIDES EDUCAT...	CONSUMER	Consumer Svcs-Education	57	B+	89	89	-69.48	83		
		34	NAPA	Duckhorn Portfolio Inc	S	19.42	PRODUCE AND DISTRIBUTES LUXURY WIN...	ALCOHL/TOB	Beverages-Alcoholic	39	A-	37	71	-23.09	83		
		35	RPRX	Royalty Pharma plc Cl A	S	42.58	COMPANY THAT OWNS PHARMACEUTICAL ...	MEDICAL	Medical-Biomed/Biotech	111	C+	39	86	-9.60	83		
		36	SHC	Sotera Health Co	S	20.38	PROVIDES STERILIZATION SERVICES, MICR...	MEDICAL	Medical-Services	127	C-	99	46	-25.57	82		
		37	EBC	Eastern Bankshares Inc	S	19.16	HOLDING COMPANY FOR EASTERN BANK O...	BANKS	Banks-Northeast	64	B+	92	62	-16.80	81		
		38	FSBC	Five Star Bancorp	S	24.95	HOLDING COMPANY FOR FIVE STAR BANK ...	BANKS	Banks-West/Southwest	98	C+	87	57	-26.57	81		
		39	GFS	Globalfoundries Inc	S	52.29	MANUFACTURES INTEGRATED CIRCUITS A...	CHIPS	Elec-Semiconductor Mfg	88	B-	73	90	-34.22	81		
		40	SNCY	Sun Country AirlinesHldg	S	27.51	OPERATES SCHEDULED, CHARTER & CARG...	TRANSPRT	Transportation-Airline	77	B	73	54	-36.79	81		