

Bullish Growth Stocks

5/22/2022

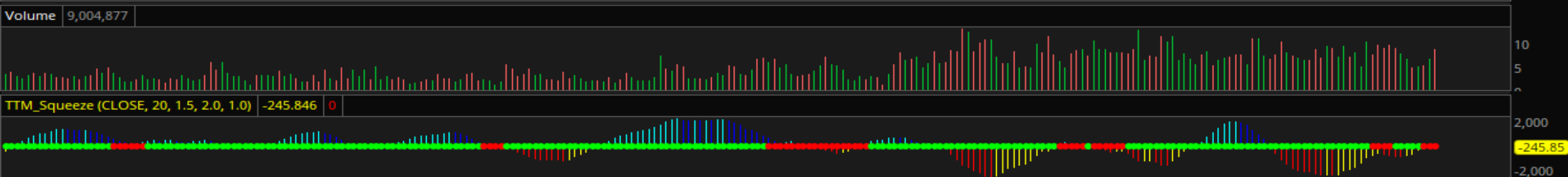
Nick Smith



Nasdaq is in a strong, well-defined downtrend. There is no signs of anything but this.

However, price is currently well extended on the downside and far from the falling 50-day simple moving average. At some point, there will be a rally. But this is still in no mans land and not much to say.

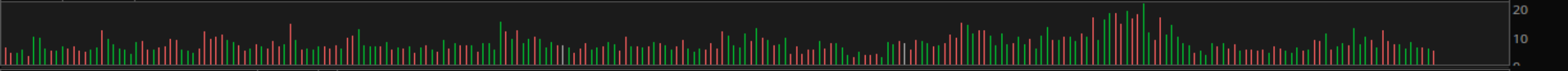




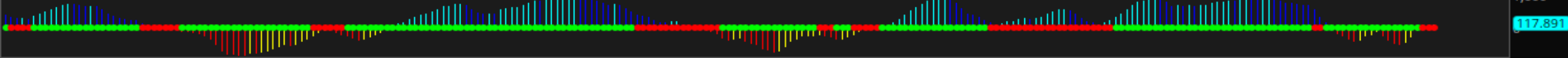


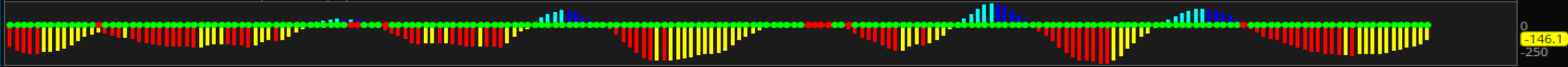
Price holding the 50-day simple, building higher lows.

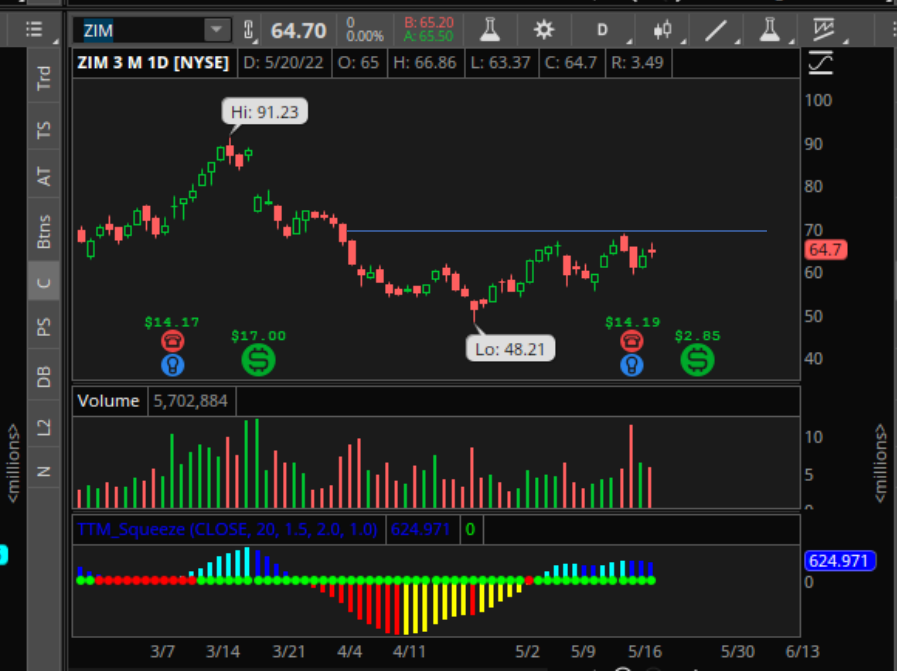
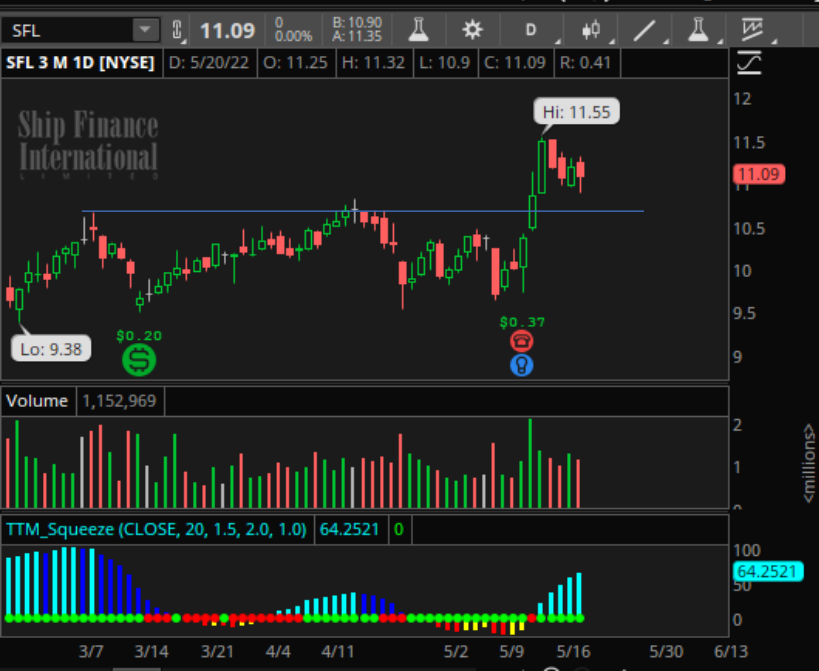
Volume 5,457,875

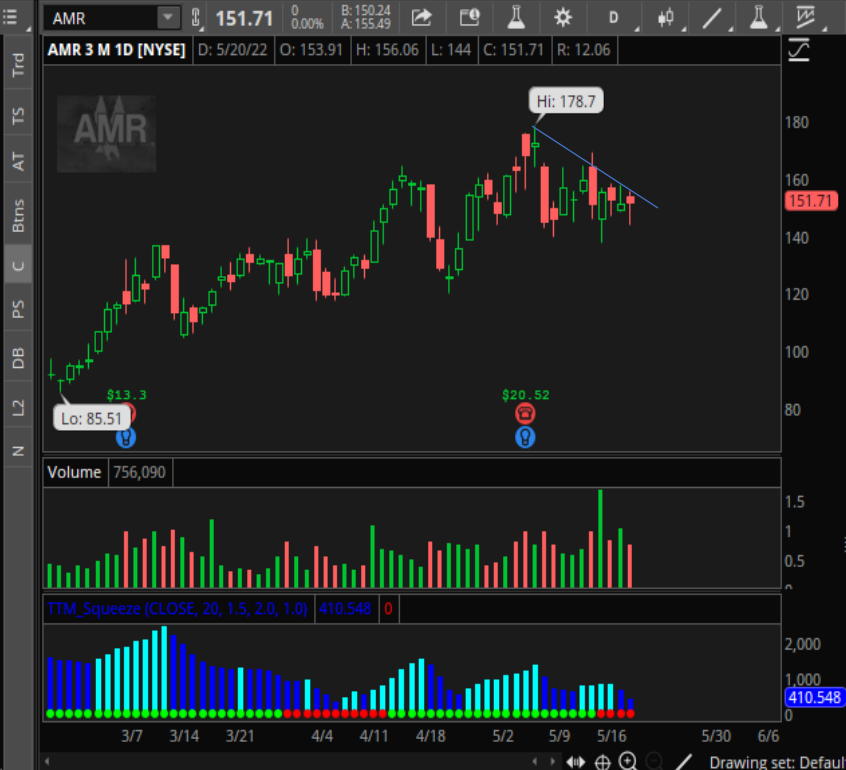


TTM_Squeeze (CLOSE, 20, 1.5, 2.0, 1.0) 117.891 0









Enter symbol 0 0.00% B: 0 A: 0

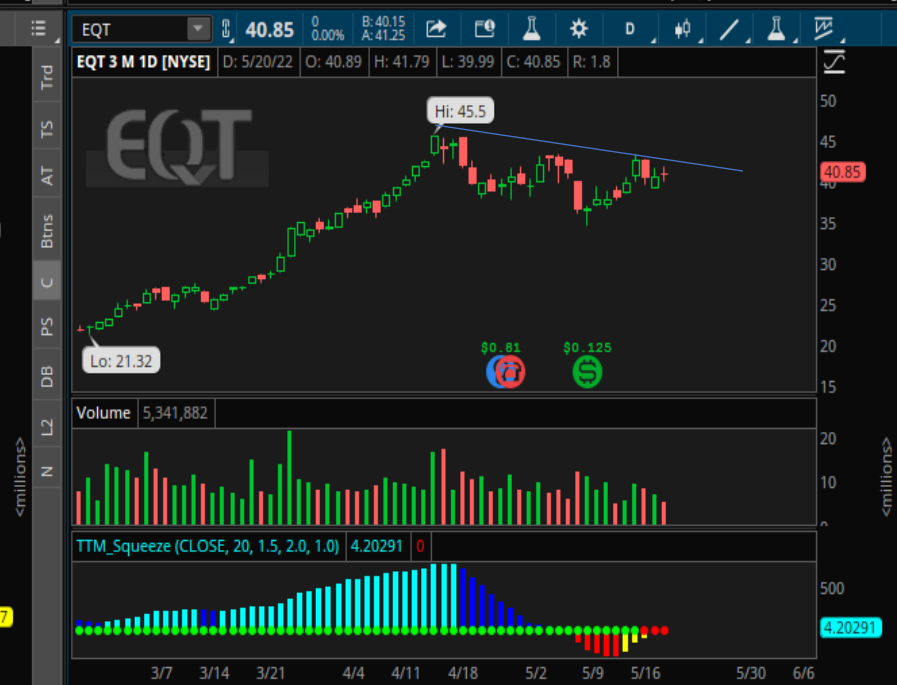
Charts

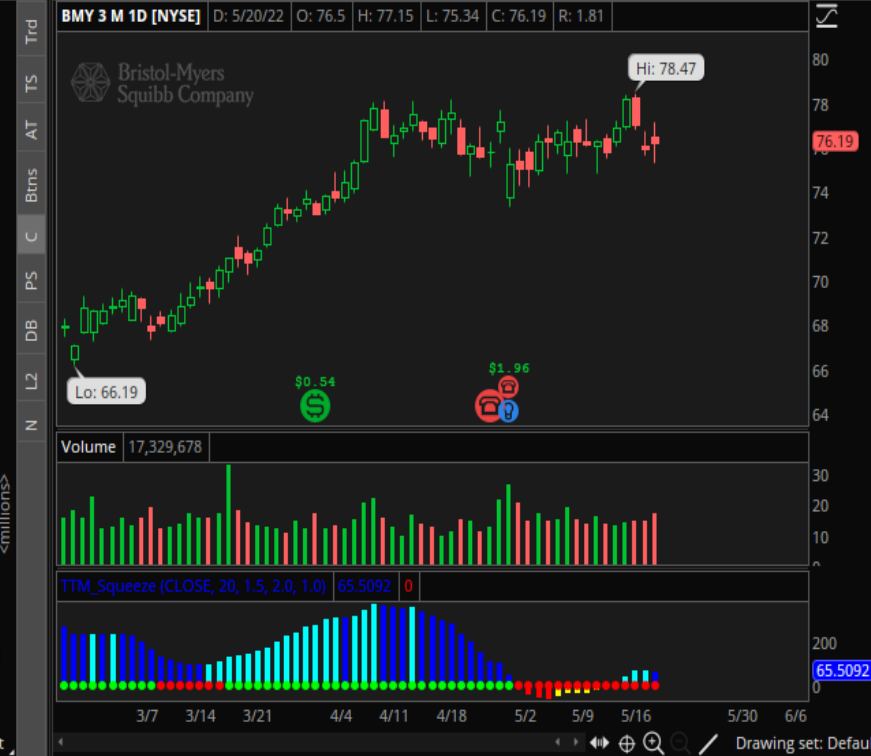
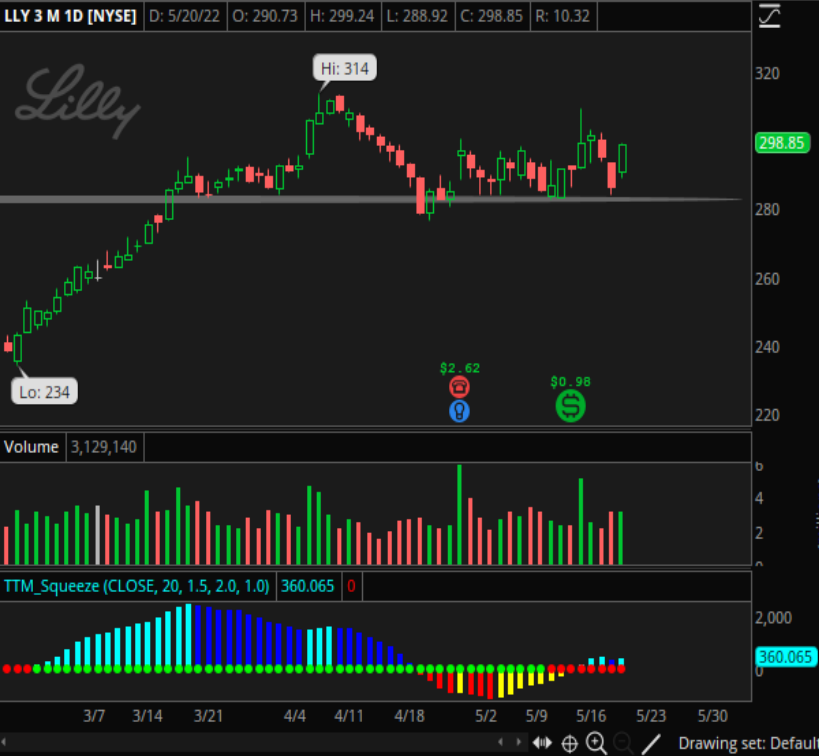
View a symbol's price plot and use hundreds of technical indicators. Select a symbol to start.

0 0.00% B: 0 A: 0

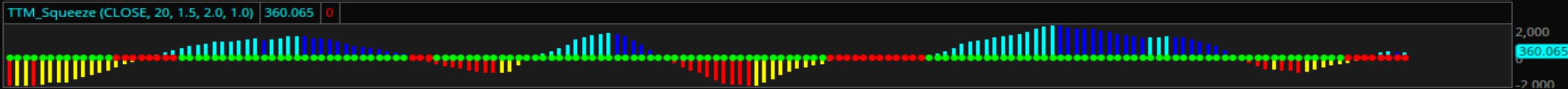
Charts

View a symbol's price plot and use hundreds of technical indicators. Select a symbol to start.





Lilly



HEADQUARTERS: Arlington, VA

PHONE: 571-389-6000

IPO 6/5/2015

EPS Due 8/4/2022e

50-Day Avg Volume 709,300

DEVELOPS END-TO-END, BUILT-FOR-PURPOSE, TECHNOLOGY-ENABLED SERVICE PLATFORMS FOR VALUE-BASED HEALTHCARE

Off 52-Week High -14.9%

02/23/22 Expects Q1 2022 revenues of about \$280.0 mil to \$295.0 mil

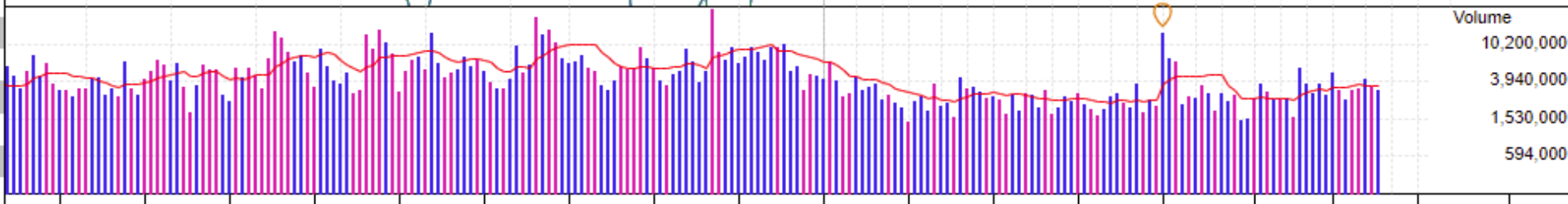
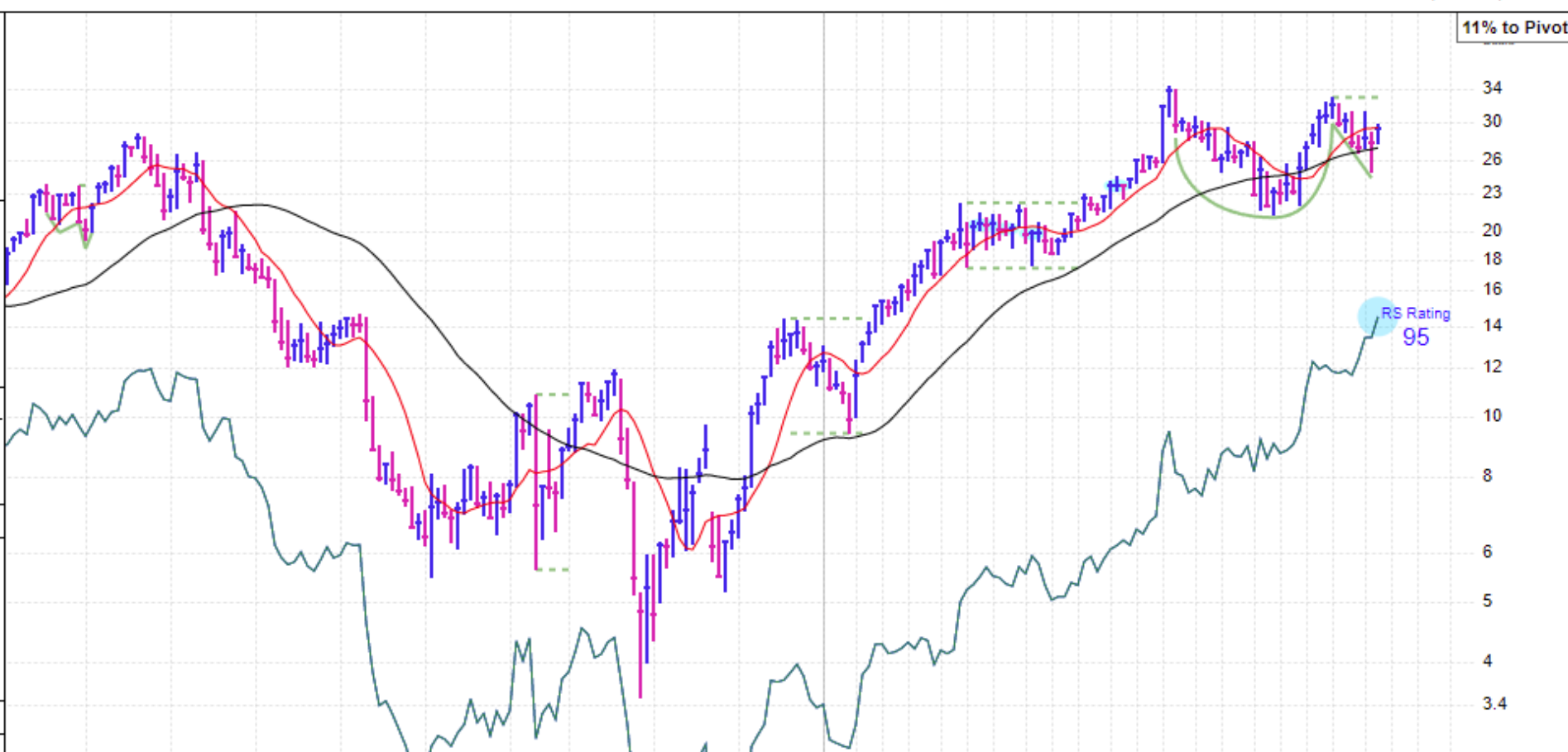
52-Week Hi-Lo \$34.60-\$18.33

Year (Dec)	EPS (\$)	Price(\$) High	Low	EPS Rating	75
2015	0.34	23	11	Group RS Rating	12
2016	-0.79	26	8	SMR Rating	D
2017	-0.35	27	10	Acc/Dis Rating	B-
2018	-0.12	29	12	Composite Rating	88
2019	-0.72	21	5	Timeliness Rating	B
2020	-0.19	16	3	Sponsorship Rating	C
2021	0.02	34	15	EPS Growth Rate	N/A
2022	0.25	est	999%▲	Earnings Stability	N/A
2023	0.51	est	104%▲	P/E Ratio	193 (10.7 X SP)
				5-Year P/E Range	142-1730

Yield	NONE	Return on Equity	0%
ExDiv	N/A	Cash Flow	\$0.99
Book Value	x3.85	Debt	31%
Inventory T/O	N/A	R&D	N/A
U/D Vol Ratio	0.9	Alpha	0.21
New CEO	10/2020	Beta	1.14

Top RS in Grp	Symbol	RS	EPS Rtg	No. of Funds
Cerner	CERN	93	86	Jun-21 356
ChangeHlthcr	CHNG	91	45	Sep-21 375
NextgenHlthcr	NXGN	87	58	Dec-21 393
Simulatns	SLP	86	91	Mar-22 398
CmptrProg	CPSI	78	88	

Quarterly	EPS(\$)	%Chg	Sales(\$Mil)	% Chg
Sep-20	-0.03	N/A	239.6	+9%
Dec-20	0.03	#+143%	246.5	+4%
Mar-21	-0.01	N/A	215.1	-3%
Jun-21	-0.02	N/A	222.1	+2%
Sep-21	-0.03	N/A	222.5	-7%
Dec-21	0.08	+167%	248.4	+1%
Mar-22	0.12	#+999%	297.1	+38%



11% to Pivot

Volume

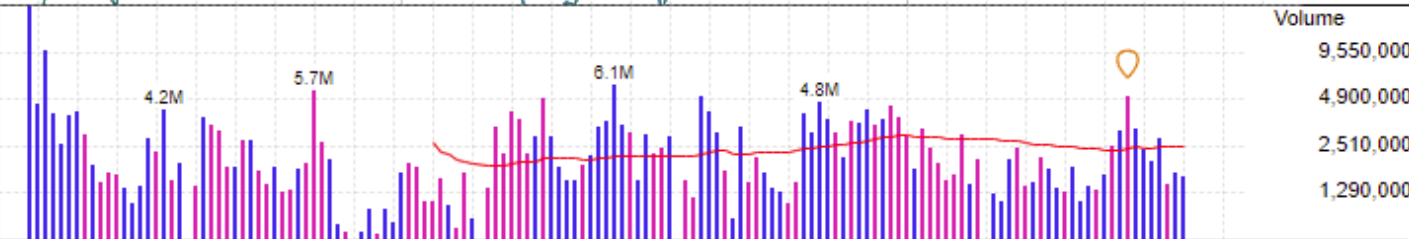
10,200,000
3,940,000
1,530,000
594,000

Jan 18 Sep 18 Dec 18 Mar 19 Jun 19 Sep 19 Dec 19 Mar 20 Jun 20 Sep 20 Dec 20 Mar 21 Jun 21 Sep 21 Dec 21 Mar 22 Jun 22 Sep 22 Dec 22

MANUFACTURES INTEGRATED CIRCUITS AND OFFERS SOLUTIONS AND FABRICATION SERVICES FOR HIGH-GROWTH MARKETS.

Year (Dec)	EPS (\$)	Price(\$) High Low	EPS Rating	75
2015			Group RS Rating	C+
2016			SMR Rating	C
2017			Acc/Dis Rating	C
2018	-4.83		Composite Rating	82
2019	-2.53		Timeliness Rating	B
2020	-2.49▲		Growth Rate	N/A
2021	-0.05▲	73 44	P/E	90 (5.0 X SP)
2022	2.29 est	N/A ▲	Mkt Cap	\$29.86 Bil
2023	2.58 est	13% ▲	Shares	542.9 Mil
			Funds	8%

-25% from Pivot in 46 days



Qtr Ended June 30, 2021				Qtr Ended September 30, 2021				Qtr Ended December 31, 2021				Qtr Ended March 31, 2022 *				EPS Due N/A	
-0.06 ▲	vs	-0.43 ▲	N/A	0.06 ▲	vs	-0.54 ▲	#+111%	0.18 ▲	vs	-0.97 ▲	#+119%	0.42	vs	-0.24 ▲	#+275%	Earnings (\$)	
1620.0	vs	1318.0	+23%	1700.0	vs	1091.0	+56%	1847.0	vs	1062.0	+74%	1940.0	vs	1418.0	+37%	Sales (\$Mil)	
			-0.4%				+4.5%				-9.7%				-14.2%	Return on Equity	



Volume 166,229



TTM_Squeeze (CLOSE, 20, 1.5, 2.0, 1.0) 0.102586 0

