

Bullish Growth Stocks Market Report #3

Date: 5/10/2020

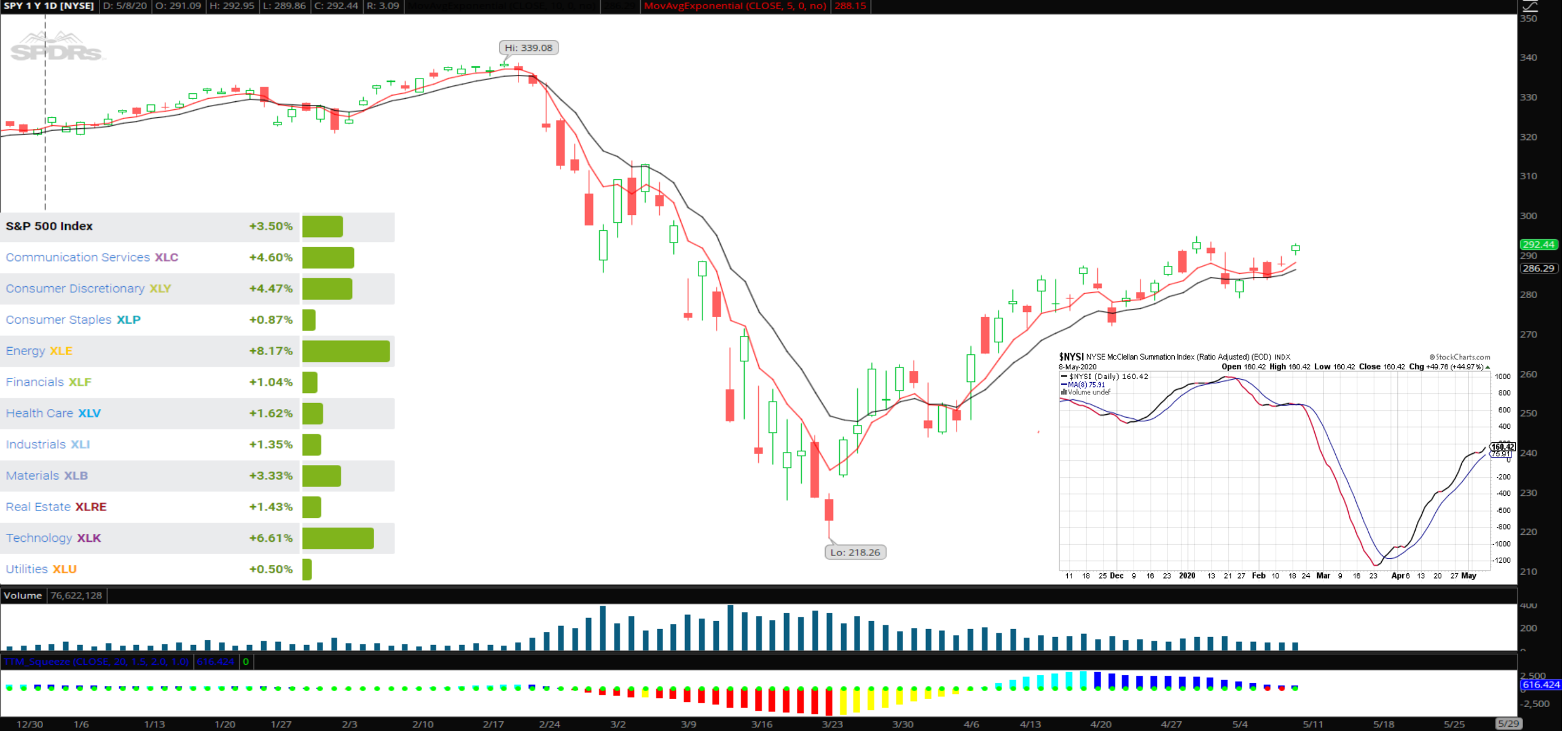
Charts by Investors Business Daily

@MarketSmith



Overview

- Has the low hanging fruit been picked? I am seeing a lot of eyeballs on the same group of tickers now. As sentiment has improved, the QQQ's are now green on the year, and coming off a strong overall week with a few astonishing moves, makes me wonder if the "easy" money is still to be had now? Admittedly, this report contains many of the same name's others are looking at. I will try hard to find some under the radar spots with solid fundamentals and technical setups, but they are far and few between right now. I have my best weeks/months when technical setups present themselves WHILE sentiment is offside. We had that in April and last week. Now...not so much. Most of my attention will be on managing the positions I still have open and being selective to take on new risk.
- The leaders are really starting to separate themselves from the rest of the pack. This is something to pay attention to. IF they start to falter and we see the laggards catching a bid (outside the normal rotation) this could spell trouble for the market.
- What is included?
- SPY review
 - Long until wrong...again....
- Sentiment Read
 - Information courtesy of by Helene Meisler (@hmeisler) and @sentimentrader
 - Are we getting over heated?
- Industry Group Leaders
 - Information by Investors Business Daily and MarketSmith
 - There are some strong names in strong groups. A great pond to cast your line and go fishing in.
- Fun With Charts- High School TA, Collegiate FA, Masters in Trader Psychology and a PHD in Position Management... That is my recipe.
 - VRTX, PTON, AMD, AVL, CMG, EVER, FRPT, RNG, TREX , VRTX
- Earnings
 - Courtesy of Earnings Whisper (@eWhispers)



Strong week for the markets, with names like FSLY TWLO LVGO PTON GMAB CHGG absolutely crushing it. Watch for consolidation in these names for possible entry. The 5ema is still above the 10ema on SPY with summation index in buy mode. As I have said the last two reports, I am long until wrong. Keep It Simple Stupid and Follow Price (K.I.S.S.F.P)

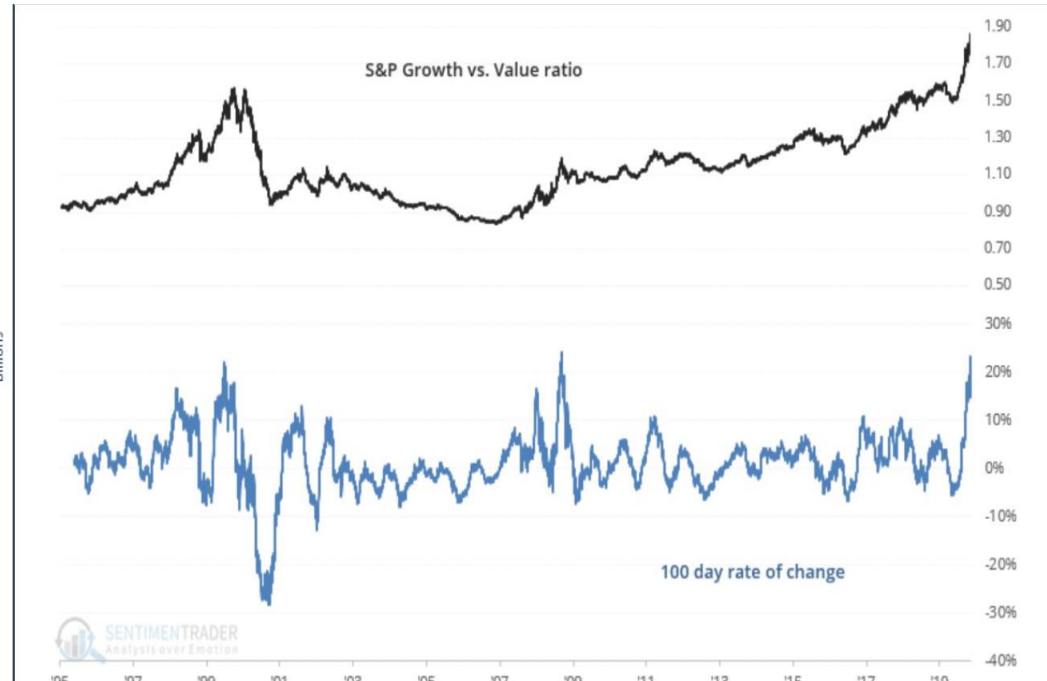
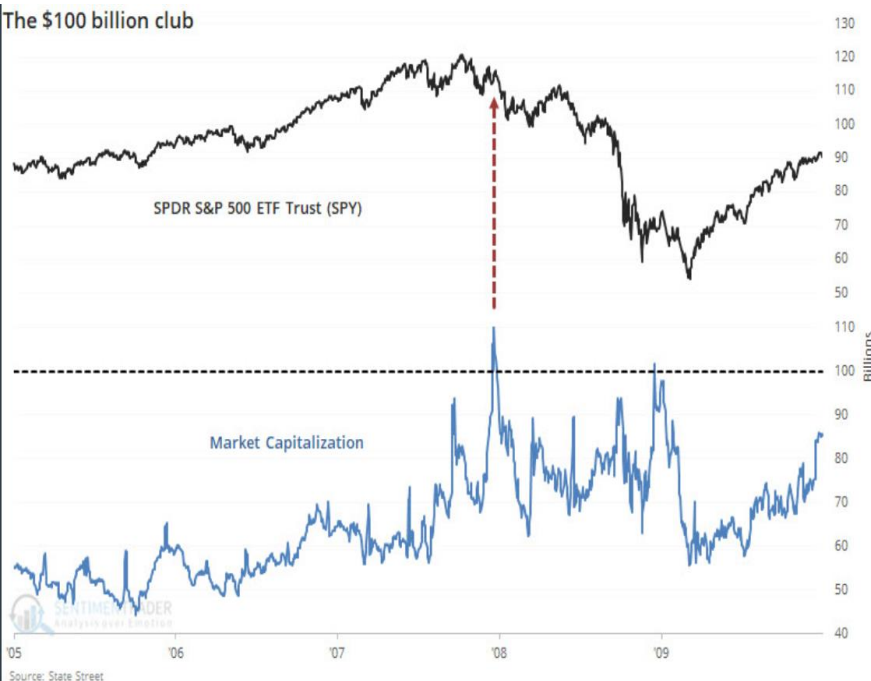
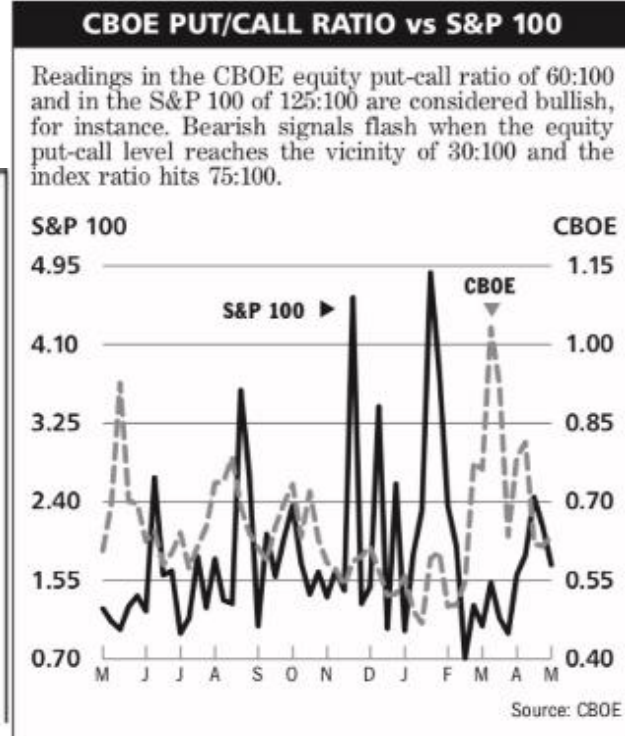
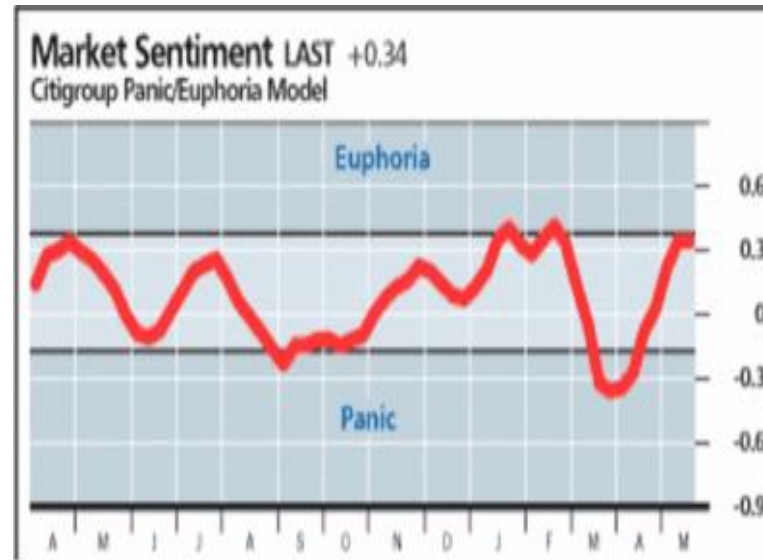
Sentiment and Studies

Bottom left & Middle Chart- Provided by @sentimentrader

Left- The Popular tech fund hit 100 billion market cap according to SentimenTrader on twitter. The last time it reached this level was 2007. Also by Sentimentrader is the middle lower chart, showcasing the outperformance of growth over value. He notes that this current move can only be compared to Dec 1999 and Feb of 2009. Both cases, according to him, saw growth underperform value moving forward.

Posted by Helene Meisler (@hmeisler) we see the citigroup sentiment model now hit Euphoria. Interesting however, AAI index and consensus index is staying relatively flat and not showing an uptick yet in bullishness.

Last week saw some massive moves off earnings. Many tech names broke out, some were up over 40% in a single day. Growth stocks are surging. Almost, maybe, just a little, feels a tad bit frothy to me.



INVESTOR SENTIMENT READINGS			
High bullish readings in the Consensus stock index or in the Market Vane stock index usually are signs of Market tops; low ones, market bottoms.			
	Last Week	2 Weeks Ago	3 Weeks Ago
Consensus Index			
Consensus Bullish Sentiment	33%	32%	30%
Source: Consensus Inc., P.O. Box 520526, Independence, Mo. Historical data available at (816) 373-3700. editor@consensus-inc.com			
AAII Index			
Bullish	23.7%	30.6%	24.9%
Bearish	52.7	44.0	50.0
Neutral	23.7	25.4	25.1
Source: American Association of Individual Investors, 625 N. Michigan Ave., Chicago, Ill. 60611 (312) 280-0170.			
Market Vane			
Bullish Consensus	32%	32%	29%
Source: Market Vane, P.O. Box 90490, Pasadena, CA 91109 (626) 395-7436.			
TIM Group Market Sentiment			
Indicator	56.0%	48.1%	47.4%
Source: TIM Group, 3 Columbus Circle, Suite 1592 New York, NY 10019 (844) 207-1445. timsupport@timgroup.com			

Industry Groups- IBD MarketSmith

Name	Type	Number of Stocks	Ind Group Rank ↑	Ind Grp Rnk Last	Ind Grp Rnk 3 Mo	Ind Grp Rnk 6 Mo	% Chg YTD	Ind Mkt Val (bil)
Retail-Internet	IG	34	1	2	92	183	35.09	2,190.0
Mining-Gold/Silver/Gems	IG	62	2	1	47	25	14.19	276.0
Computer Sftwr-Enterprise	IG	71	3	6	23	96	24.39	744.0
Auto Manufacturers	IG	18	4	3	1	6	82.05	732.0
Computer Sftwr-Medical	IG	21	5	4	117	142	22.06	69.0
Medical-Biomed/Biotech	IG	564	6	7	2	39	2.51	1,256.0
Eleco-Semiconductor Fabllss	IG	30	7	14	16	49	3.69	578.0
Medical-Systems/Equip	IG	62	8	8	9	62	1.83	228.0
Leisure-Movies & Related	IG	18	9	13	118	121	4.22	297.0
Medical-Research Eqp/Svc	IG	32	10	17	77	100	4.95	335.0
Telecom Svcs-Cable/Satfl	IG	11	11	5	10	17	18.32	250.0
Computer Sftwr-Desktop	IG	7	12	10	18	90	11.99	1,599.0
Medical-Diversified	IG	7	13	9	43	115	7.67	1,146.0
Computer Sftwr-Security	IG	30	14	20	143	180	10.69	182.0
Medical-Products	IG	128	15	11	81	72	-1.88	666.0
Computer Sftwr-Gaming	IG	14	16	12	44	136	11.38	1,242.0
Soap & Clng Preparatns	IG	4	17	18	168	177	14.75	99.0
Comp Sftwr-Spec Enterprns	IG	35	18	22	53	160	7.8	143.0
Telecom Svcs-Wireless	IG	12	19	16	122	188	9.25	131.0
Computer Sftwr-Edu/Media	IG	15	20	28	145	127	14.05	37.0
Consumer Svcs-Education	IG	36	21	25	61	58	-4.5	129.0
Medical-Services	IG	25	22	29	130	185	7.97	53.0
Energy-Solar	IG	17	23	26	40	118	13.19	45.0
Computer Sftwr-Design	IG	11	24	27	24	129	5.67	162.0
Telecom-Fiber Optics	IG	11	25	19	48	77	-1.01	20.0
Internet-Network Sltns	IG	18	26	32	52	105	1.48	99.0
Computer Sftwr-Database	IG	17	27	42	108	179	5.72	243.0
Medical-Managed Care	IG	11	28	15	60	80	-0.53	510.0
Comml Svcs-Market Rsrch	IG	13	29	30	114	111	3.24	254.0
Retail-Discoutn&Variety	IG	7	30	31	175	110	-4.25	79.0

Elec-Semiconductor Fabllss			Retail-Internet		
Symbol	Company	Mkt Cap (mil)	Symbol	Company	Mkt Cap (mil)
NVDA	Nvidia Corp	191,250	AMZN	Amazon.com...	1,186,89
AVGO	Broadcom Inc	109,954	BABA	Alibaba Grou...	529,53
QCOM	Qualcomm Inc	92,083	JD	JD.com Inc C...	68,39
AMD	Advanced Mi...	62,277	PDD	Pinduoduo In...	63,16
NXPI	Nxp Semicon...	29,253	MELI	Mercadolibre ...	38,99
XLNX	Xilinx Inc	21,613	EBAY	Ebay Inc	29,54
MRVL	Marvell Tech...	17,804	W	Wayfair Inc CI A	17,69
MXIM	Maxim Integr...	14,429	CHWY	Chevy Inc CI A	15,81
MPWR	Monolithic Po...	9,446	JSTTY	Just Eat PLC ...	15,33
IPHI	Inphi Corp	5,112	VIPS	Vipshop Hold...	11,51
CRUS	Cirrus Logic Inc	4,473	ETSY	Etsy Inc	9,57
SLAB	Silicon Labor...	4,379	STMP	Stamps.com ...	3,46
LSCC	Lattice Semic...	3,158	SFIX	Stitch Fix Inc ...	1,80
SMTC	Semtech Cor...	3,025	SSTK	Shutterstock ...	1,32
AMBA	Ambarella Inc	1,880	REAL	The Realreal ...	1,20
RMBS	Rambus Inc	1,713	FVRR	Fiverr Interna...	1,00
MXL	Maxlinear Inc	1,215	YJ	Yunji Inc CI A ...	82
CAN	Canaan Inc ...	931	PETS	Petmed Expr...	74
Computer Sftwr-Medical			Computer Sftwr-Enterprise		
Symbol	Company	Mkt Cap (mil)	Symbol	Company	Mkt Cap (mil)
VEEV	Veeva Syste...	28,707	CRM	Salesforce.co...	157,430
CERN	Cerner Corp	21,445	SAP	S A P Se Adr	143,427
TDOC	Teladoc Healt...	13,141	SHOP	Shopify Inc CI A	82,544
INOV	Inovalon Hld...	2,601	NOW	Servicenow Inc	71,944
CHNG	Change Heal...	1,428	ZM	Zoom Video ...	43,356
TRHC	Tabula Rasa ...	1,316	WDAY	Workday Inc ...	38,407
HCAT	Health Cataly...	1,037	TWLO	Twilio Inc CI A	25,151
MDRX	Allscripts Hlth...	1,036	RNG	RingCentral I...	23,445
PHR	Phreesia Inc	1,032	DOCU	Docusign Inc	21,150
SLP	Simulations ...	712	WORK	Slack Techno...	17,350
NXGN	Nextgen Heal...	664	AKAM	Akamai Tech...	16,434
EVH	Evolent Healt...	599	PAYC	Paycom Soft...	16,007
BNFT	Benefitfocus I...	367	DDOG	Datadog Inc ...	15,367
CPSI	Computer Pr...	336	GDDY	Godaddy Inc ...	13,126
NH	Nanthealth Inc	294	COUP	Coupa Softw...	12,568
OPRX	Optimizerx C...	158	ZEN	Zendesk Inc	8,874
CSLT	Castlight Hea...	126	DT	Dynatrace Inc	8,766
MTBC	M T B C Inc	78	WIX	Wix.com Ltd	8,241
WORX	Scworx Corp	40	NET	Cloudflare In...	7,967
PTE	Polarityte Inc	34	AZPN	Aspen Techn...	6,827
STRM	Streamline H...	30	SMAR	Smartsheet I...	6,704
			FIVN	Five9 Inc	6,483
			PCTY	Paylocity Hol...	6,294
			PLAN	Anaplan Inc	5,796
			SWI	Solanwinds C...	5,220

Year (Dec)	EPS (\$)	Price(\$)	High	Low
2013	-0.11	4	2	
2014	0.16	4	2	
2015	-0.54	3	1	
2016	-0.14	12	1	
2017	0.10	15	9	
2018	0.46	34	9	
2019	0.64	47	16	
2020	1.02	est	59%	
2021	1.49	est	46%	

Yield	NONE
ExDiv	4/27/95
Book Value	x22.03
Inventory T/O	7.37X
U/D Vol Ratio	1.1
New CEO	10/2014

Top RS in Grp	Symbol	RS	EPS Rtg	No. of Funds
Nvidia	NVDA	97	94	Jun-19 1674
Inphi	IPHI	97	82	Sep-19 1778
LatticeSemi	LSCC	95	98	Dec-19 1891
Monolithic	MPWR	94	92	Mar-20 1958
Cirrus	CRUS	92	87	

Quarterly	EPS(\$)	%Chg	Sales(\$Mil)	% Chg
Jun-18	0.14	#+999%	1756.0	+53%
Sep-18	0.13	+44%	1653.0	+4%
Dec-18	0.08	+700%	1419.0	+6%
Mar-19	0.06	-45%	1272.0	-23%
Jun-19	0.08	-43%	1531.0	-13%
Sep-19	0.18	+38%	1801.0	+9%
Dec-19	0.32	+300%	2127.0	+50%
Mar-20 *	0.18	+200%	1786.0	+40%



High rated IBD stock, cup and handle with volume decreasing in handle. Almost textbook pattern. However, are there too many eyes on this one? I am long AMD and NVDA as well. Industry group moving up in rankings, showing strength.

Year	EPS	Price(\$)		EPS Rating	
(Dec)	(\$)	High	Low	Group RS Rating	
2013				SMR Rating	C
2014				Acc/Dis Rating	C-
2015	-1.18			Composite Rating	81
2016	-0.88			Timeliness Rating	A
2017	-0.58			Sponsorship Rating	B
2018	-0.68	59	28	EPS Growth Rate	N/A
2019	-0.12	94	30	Earnings Stability	N/A
2020	-0.19	est	N/A	P/E Ratio	N/A
2021	0.02	est	N/A	5-Year P/E Range	N/A
Yield	NONE		Return on Equity	[N/A]	
ExDiv	N/A		Cash Flow	\$0.00	
Book Value	x16.22	Debt	N/A	Ownership	
Inventory T/O	N/A	R&D	21.6%	Mgmt	21%
U/D Vol Ratio	1.2	Alpha	0.14	Banks	1%
New CEO	N/A	Beta	1.01	Funds	99%
Top RS in Grp	Symbol	RS	EPS Rtg	No. of Funds	
CitrixSys	CTXS	96	85	Jun-19	306
ClarivateAnlyt	CCC	95	38	Sep-19	402
Atlassian A	TEAM	94	98	Dec-19	444
TylerTech	TYL	92	90	Mar-20	489
Blackline	BL	91	76		
Quarterly	EPS(\$)	%Chg	Sales(\$Mil)	% Chg	
Jun-18	-0.19	N/A	63.9	+26%	
Sep-18	-0.14	N/A	69.9	+27%	
Dec-18	-0.19	N/A	76.9	+33%	
Mar-19	-0.03	N/A	85.0	+38%	
Jun-19	-0.03	N/A	91.3	+43%	
Sep-19	-0.03	N/A	98.5	+41%	
Dec-19	-0.03	N/A	107.6	+40%	
Mar-20 *	-0.05	N/A	111.4	+31%	



AVLR initially broke out before earnings on 58% increased volume. Reported and had a poor reaction, pulling back to pivot on increased volume, 59% of average. A little sloppy, but one to watch if it can hold the 95-pivot area.

Year (Dec)	EPS (\$)	Price(\$) High Low	EPS Rating	59
2013	10.39	550 266	Group RS Rating	72
2014	14.13	697 472	SMR Rating	A
2015	15.10▲	758 477	Acc/Dis Rating	B+
2016	1.28▲	542 352	Composite Rating	93
2017	6.60▲	499 263	Timeliness Rating	B
2018	8.88▲	530 247	Sponsorship Rating	B
2019	14.05	857 423	EPS Growth Rate	3%
2020	8.57 est	-39%▼	Earnings Stability	87
2021	18.45 est	115%▼	P/E Ratio	65 (3.6 X SP)
Yield	NONE		5-Year P/E Range	30-341
ExDiv	N/A		Return on Equity	25%
Book Value	x15.34		Cash Flow	\$27.89
Inventory T/O	234.47X		Debt	N/A
U/D Vol Ratio	1.1		R&D	N/A
New CEO	03/2018		Alpha	0.12
			Beta	0.89
			Funds	66%
Top RS in Grp	Symbol	RS	EPS Rtg	No. of Funds
Wingstop	WING	96	86	Jun-19 1443
PapaJohns	PZZA	96	46	Sep-19 1497
DominosPzza	DPZ	95	99	Dec-19 1497
Yum China	YUMC	89	80	
El Pollo Loco	LOCO	87	73	Mar-20 1491
Quarterly	EPS(\$)	%Chg	Sales(\$Mil)	% Chg
Jun-18	2.87	+24%	1266.5	+8%
Sep-18	2.16	+62%	1225.0	+9%
Dec-18	1.72	+28%	1225.1	+10%
Mar-19	3.40	+60%	1308.2	+14%
Jun-19	3.99	+39%	1434.2	+13%
Sep-19	3.82	+77%	1403.7	+15%
Dec-19	2.86	+66%	1440.2	+18%
Mar-20	3.08	-9%	1410.8	+8%



Might be too late for CMG entry, but wanted to throw in since I tweeted it multiple times. Beautiful low volume pullback in deep cup with handle. Pull back was above all key moving averages and right into the 8ema. Looking for 1,000 price in this one.

Year	EPS	Price(\$)		EPS Rating	
(Dec)	(\$)	High	Low	Group RS Rating	
2013	-0.10			SMR Rating	D
2014	-0.20			Acc/Dis Rating	B-
2015	-0.13			Composite Rating	87
2016	-0.04			Timeliness Rating	B
2017	-0.20			Sponsorship Rating	C
2018	-0.55	22	4	EPS Growth Rate	N/A
2019	-0.28	38	4	Earnings Stability	N/A
2020	-0.20	est	N/A	P/E Ratio	N/A
2021	-0.02	est	N/A	5-Year P/E Range	N/A
Yield	NONE			Return on Equity	[N/A]
ExDiv	N/A			Cash Flow	\$-0.19
Book Value	x26.06			Debt	N/A
Inventory T/O	N/A			R&D	8.1%
U/D Vol Ratio	1.3			Alpha	0.74
New CEO	N/A			Beta	1.22
				Ownership	
				Mgmt	3%
				Banks	0%
				Funds	47%
Top RS in Grp	Symbol	RS	EPS Rtg	No. of Funds	
Palomar Hldgs	PLMR	98	99	Jun-19	76
Ping An Insura	PNGAY	58	86	Sep-19	121
NI Hdgs	NODK	52	56	Dec-19	193
Assurant	AIZ	45	81	Mar-20	222
Muenchener Rue	MURGY	37	40		
Quarterly	EPS(\$)	%Chg	Sales(\$Mil)	% Chg	
Sep-18	-0.15	N/A	41.8	+30%	
Dec-18	-0.28	N/A	39.8	+23%	
Mar-19	-0.17	N/A	52.2	+28%	
Jun-19	-0.08	N/A	55.7	+35%	
Sep-19	0.01	#+107%	67.1	+61%	
Dec-19	-0.04	N/A	73.8	+86%	
Mar-20 *	-0.05	N/A	81.4	+56%	



263% above average volume on earnings gap to new highs. Consolidation above pivot on declining volume. There are a lot of examples of monster moves starting with high volume breakouts on earnings... will this one be next?

Options Yes
Short Interest 3.2 days -4%

HEADQUARTERS: Secaucus, NJ PHONE: 201-520-4000 IPO 11/7/2014 EPS Due 8/5/2020e
MANUFACTURES FRESH PET FOOD SOLD VIA COMPANY-OWNED REFRIGERATORS IN OVER 21,500 STORES ACROSS NORTH AMERICA.
05/04/20 Reiterated 2020 revenues guidance of \$310 mil

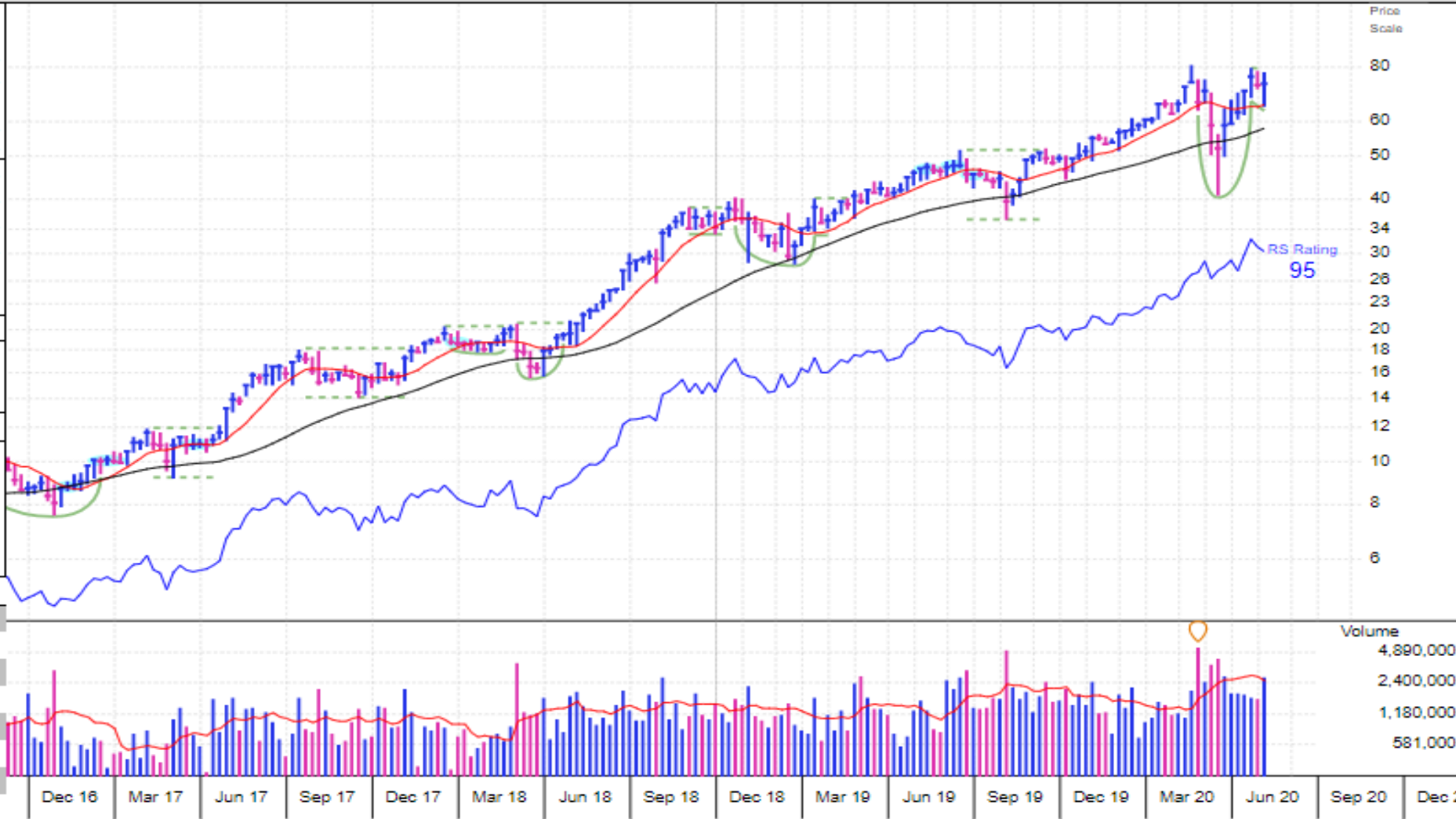
Year (Dec)	EPS (\$)	Price(\$) High	Low
2013	-0.65		
2014	-1.11▲	20	12
2015	-0.11	25	5
2016	-0.09▲	11	5
2017	-0.12	20	9
2018	-0.15	40	15
2019	-0.04	61	31
2020	0.22	est	NA ▼
2021	0.57	est	159%▼

EPS Rating	47
Group RS Rating	83
SMR Rating	C
Acc/Dis Rating	C
Composite Rating	88
Timeliness Rating	A
Sponsorship Rating	C
EPS Growth Rate	N/A
Earnings Stability	N/A
P/E Ratio	N/A
5-Year P/E Range	N/A
Return on Equity	[N/A]
Cash Flow	\$0.41

Yield	NONE
ExDiv	N/A
Book Value	x22.22
Inventory T/O	22.49X
U/D Vol Ratio	1.3
New CEO	09/2016

Top RS in Grp	Symbol	RS	EPS Rtg	No. of Funds
AmirNatFds	RYCE	94	12	Jun-19 360
B&G Foods	BGS	93	48	Sep-19 345
Seneca A	SENEA	92	76	Dec-19 347
HainCelest	HAIN	92	74	Mar-20 388
Seneca B	SENEB	91	76	

Quarterly	EPS(\$)	%Chg	Sales(\$Mil)	% Chg
Jun-18	-0.10	N/A	47.6	+23%
Sep-18	-0.01	N/A	50.8	+27%
Dec-18	0.05	+25%	51.6	+30%
Mar-19	-0.10	N/A	54.8	+27%
Jun-19	-0.16	N/A	60.1	+26%
Sep-19	0.08	#+900%	65.3	+28%
Dec-19	0.12	+140%	65.8	+27%
Mar-20 *	▲ -0.10	N/A	70.1	+28%



Not a name I see a lot of eyes on. Deep cup with handle. Gapped lower on earnings but was immediately bought up. Watching for high volume break of top of handle for possible entry.

Year (Dec)	EPS (\$)	Price(\$) High Low	EPS Rating
2013	-0.55	19 11	89
2014	-0.48	23 10	98
2015	-0.12	25 13	A
2016	0.09	25 13	B+
2017	0.47	49 20	99
2018	0.77	98 46	A
2019	0.82	177 77	B
2020	0.92	est 12%	110%
2021	1.19	est 29%	47

Yield	NONE	Return on Equity	14%
ExDiv	N/A	Cash Flow	\$1.65
Book Value	x31.44	Debt	52%
Inventory T/O	N/A	R&D	15.1%
U/D Vol Ratio	1.2	Alpha	0.34
New CEO	N/A	Beta	0.87
		Ownership	
		Mgmt	2%
		Banks	1%
		Funds	79%

Top RS in Grp	Symbol	RS	EPS Rtg	No. of Funds
AudioCodes	AUDC	98	99	Jun-19 608
Docusign	DOCU	98	84	Sep-19 629
Zoom	ZM	98	84	Dec-19 844
Shopify	SHOP	98	76	Mar-20 990
Everbbridge	EVBG	98	30	

Quarterly	EPS(\$)	%Chg	Sales(\$Mil)	% Chg
Sep-18	0.19	+46%	173.8	+33%
Dec-18	0.23	+64%	188.6	+34%
Mar-19	0.17	+6%	201.5	+34%
Jun-19	0.21	+11%	215.2	+34%
Sep-19	0.22	+16%	233.4	+34%
Dec-19	0.22	-4%	252.9	+34%
Mar-20 *	0.19	+12%	267.5	+33%



RNG previous big winner, broke out on only 25% above average volume. As long as it holds the 250 pivot, I would error on the side of being long.

Year (Dec)	EPS (\$)	Price(\$) High	Low
2013	0.71	20	9
2014	0.64	22	12
2015	0.83	28	15
2016	1.28	36	15
2017	1.58	59	30
2018	2.35	90	50
2019	2.51	93	57
2020	2.46	est	-2%
2021	2.84	est	15%

Yield	NONE
ExDiv	N/A
Book Value	x14.82
Inventory T/O	13.09X
U/D Vol Ratio	1.3
New CEO	04/2020

Top RS in Grp	Symbol	RS	EPS Rtg	No. of Funds
AlphaProT	APT	99	90	Jun-19 540
AdvancedDrm	WMS	89	27	Sep-19 563
MasonitIntl	DOOR	82	92	Dec-19 600
Topbuild	BLD	77	99	
SimpsonMfg	SSD	76	99	Mar-20 618

Quarterly	EPS(\$)	%Chg	Sales(\$Mil)	% Chg
Jun-18	0.73	+49%	206.7	+31%
Sep-18	0.57	+68%	166.4	+19%
Dec-18	0.43	+54%	140.0	+15%
Mar-19	0.54	-14%	179.6	+5%
Jun-19	0.64	-12%	206.5	0%
Sep-19	0.72	+26%	194.6	+17%
Dec-19	0.61	+42%	164.8	+18%
Mar-20 *	0.73	+35%	200.4	+12%



TREX might have been lost in the news of last weeks super winners, but this name broke out on back to back days of over 80% increased volume and is holding the 110 pivot.

Year (Dec)	EPS (\$)	Price(\$) High Low	EPS Rating	99
2013	-0.93	89 40	Group RS Rating	97
2014	-2.17	124 59	SMR Rating	A
2015	-1.11	143 97	Acc/Dis Rating	B-
2016	0.85	127 71	Composite Rating	99
2017	1.95▲	167 73	Timeliness Rating	A
2018	4.08▲	194 144	Sponsorship Rating	B
2019	5.33	225 160	EPS Growth Rate	99%
2020	8.67 est	63%▲	Earnings Stability	20
2021	10.82 est	25%▲	P/E Ratio	40 (2.2 X SP)
			5-Year P/E Range	29-254
			Return on Equity	26%
			Cash Flow	\$5.78
Yield	NONE		Debt	9%
ExDiv	N/A		R&D	42.1%
Book Value	x11.57		Alpha	0.18
Inventory T/O	28.53X		Beta	0.87
U/D Vol Ratio	1.3			
New CEO	04/2020			
Top RS in Grp	Symbol	RS	EPS Rtg	No. of Funds
Novavax	NVAX	99	51	Jun-19 1992
Compn	CGEN	99	43	Sep-19 2025
Co-Diagnostics	CODX	99	42	Dec-19 2123
Bellerophon	BLPH	99	42	Mar-20 2222
CueBioPharma	CUE	99	40	
Quarterly	EPS(\$)	%Chg	Sales(\$Mil)	% Chg
Jun-18	0.94	+141%	752.2	+38%
Sep-18	1.09	+106%	784.5	+36%
Dec-18	▲ 1.30	+113%	870.1	+34%
Mar-19	1.14	+50%	858.4	+34%
Jun-19	1.26	+34%	941.3	+25%
Sep-19	1.23	+13%	949.8	+21%
Dec-19	1.70	+31%	1413.3	+62%
Mar-20 *	2.56	+125%	1515.1	+76%

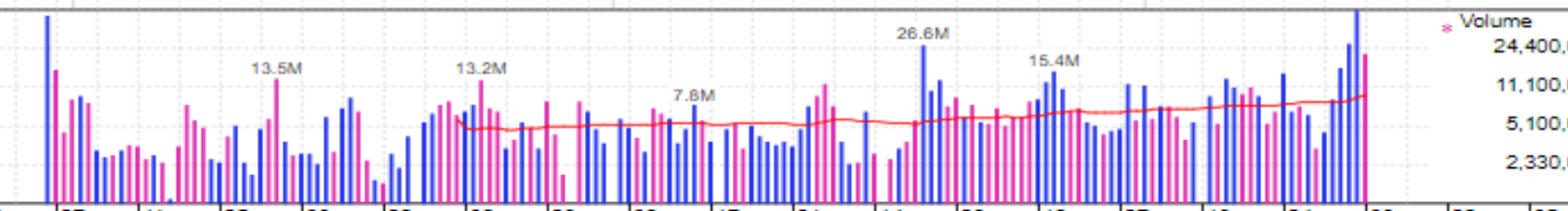


#3 on IBD 50 list this week. Solid fundamentals with good accumulation. This one can run after it breaks out and could be a decent winner.

PROVIDES RECREATIONAL FACILITIES AND SERVICES AND FITNESS PLATFORM TO OVER 1.4 MILLION MEMBERS WORLDWIDE.

+62% from Pivot in 122 days

Year (Jun)	EPS (\$)	Price(\$) High Low	EPS Rating	Group RS Rating	SMR Rating	Acc/Dis Rating	Composite Rating	Timeliness Rating	Growth Rate	P/E	Mkt Cap	Shares	Funds
2013			12	D+	D	A+	74	C	N/A	N/A	\$12B(\$1.9B)	281M(44M)	36%
2014													
2015													
2016													
2017	-0.25								N/A	N/A			
2018	-0.17								N/A	N/A			
2019	-0.69▲	37 20											
2020	-0.65 est	N/A ▲											
2021	-0.52 est	N/A ▲											



Qtr Ended June 30, 2019				Qtr Ended September 30, 2019				Qtr Ended December 31, 2019				Qtr Ended March 31, 2020 *				EPS Due 7/28e
-0.17	vs	-0.04	N/A	-0.18 ▲	vs	-0.19	N/A	-0.20 ▲	vs	-0.19	N/A	-0.20 ▲	vs	-0.14 ▲	N/A	Earnings (\$)
223.3	vs	106.6	+109%	227.9	vs	112.1	+103%	466.3	vs	262.9	+77%	524.6	vs	316.7	+66%	Sales (\$Mil)
			N/A				-12.1%				-12.3%				-13.5%	Return on Equity

PTON breaks out on over 400% average volume. Consolidates the next day. Look for some more sideways action then resumption of trend higher.

TEAM COUP OKTA VEEV NOW TTD

Still my go to list of names to watch closely



Most Anticipated Earnings Releases

for the week beginning

May 11, 2020

Monday

Tuesday

Wednesday

Thursday

Friday

Before Open

After Close

Before Open

After Close

Before Open

After Close

Before Open

After Close

Before Open

Monday

Before Open

- Under Armour
- Cliffs
- Marriott
- Callon Petroleum Company
- Kosmos Energy
- ON Semiconductor
- Cardinal Health
- AutoNation
- Golub Capital
- Cornerstone

After Close

- inovio
- Tilray
- SIMON
- Datadog
- Energy Transfer
- Logitech
- NOVAVAX
- GW Pharmaceuticals
- Halozyme
- InspireMD

<http://eps.sh/cal>

Tuesday

Before Open

- Duke Energy
- Honda
- Palatin
- Macerich
- Ingersoll Rand
- RADCOM
- Casper
- dynatrace
- bt biosciences therapeutics
- InspireMD

After Close

- allegiant
- 8x8, Inc.
- isoray
- Infinera
- smartvest
- prodyn
- The Container Store
- VAREX IMAGING
- Houlihan Lokey
- REXNORD

Wednesday

Before Open

- Cyberark
- Veru
- Tower
- SONY
- PGT
- Arco Chemical
- JUMIA
- Lincoln Educational Services
- Energy Focus

After Close

- CISCO
- smile
- Jack In The Box
- FlowersFoods
- REVOLVE
- STERIS
- OCEANEERING
- Arcadia
- NAVIGATOR GAS
- one medical

Thursday

Before Open

- Wix.com
- Norwegian Cruise Line
- First Majestic
- SAPIENS
- Stratasys
- Adaptimmune
- NICE
- Deana Shipping Inc.
- ENTERCOM

After Close

- APPLIED MATERIALS
- AURORA
- NortonLifeLock
- FARFETCH
- SSR MINING
- PETROBRAS
- New Relic
- Village Farms
- Globant
- Denny's

Friday

Before Open

- JD.COM
- PBF
- DRAFT KINGS
- PBF
- vf
- CooTek
- IMV
- PLx Pharma Inc.
- Bio-Path Holdings
- EQUINOX GOLD