



ROOTS

P A H A L A , H A W A I I

OHANA



" M A Y B E Y O U A R E
S E A R C H I N G F O R
A M O N G T H E
B R A N C H E S W H A T
C A N O N L Y B E
F O U N D I N T H E
R O O T S . "
- R U M I



VISION

Our mission is to establish self-sustainability through mindful, small-scale organic farming practices that prioritize the environment. We specialize in curating creative spaces and conscious events, working collaboratively to manifest abundance in environmental settings. Our vision extends to empowering community projects, healing initiatives, and the realms of art and music. We believe in fostering equal energy exchanges and elevating our community, recognizing that each individual has a unique role to play. Embracing the healing frequencies of the land (aina), we aim to create spaces that reconnect individuals to their roots, inspiring a return to a harmonious and sustainable way of life.



FOUNDER

Introduction

As a runaway child navigating the challenges of being raised within the Mormon community and the juvenile legal system, my journey led me to the streets due to a lack of roots. Over the years, I became intimately acquainted with the pain of running away from oneself and attracting relationships in turmoil and trauma rooted in survival energies. In 2020, I embraced the role of a healer, realizing a lifelong dream and vision to establish a space for Ohana. Recognizing that we are all lost children walking each other home, my mission with "Roots" is to create a community for those who share a vision of togetherness and the spirit of Ohana. This space is designed to empower individuals to channel their greatness towards higher purposes, fostering community projects through a blend of consciousness, healing, art, and music in co-creation with the aina and community. Together, we walk each other home, building a nurturing environment for personal and collective growth.

Inspiration

In a world that inflicts trauma and anguish on those struggling to find their roots, my inspiration is rooted in aiding others through the healing power of nature, the act of creation, and a deliberate disconnection from the chaotic pace of modern life. My mission is to guide individuals in discovering their empowered selves and higher purpose. I seek to co-create with like-minded visionaries, united in their pursuit of elevation, abundance, and consciousness. My aspiration is to inspire these co-creators to extend the same support to others, fostering a collective uplift in consciousness and community. Through ethical practices, a spiritual (though not religious) approach, and conscious living, we can contribute to a better world. Education becomes a powerful tool to instill sustainable practices, enabling others to enhance their lives through a conscious lifestyle. The essence of consciousness is light, continually evolving, and my hope is that individuals embrace sustainable living, creating these transformative spaces across the globe.





ABOUT OUR AINA



337 acres in Papaikou, Hawaii
Close to Hilo
Ocean Views
Waterfall Access

Zoning A-20-A



OUR VISION



Music and Art

Promoting the establishment of imaginative environments that welcome artists, writers, musicians, builders, creators, and individuals with unique skills. This includes fostering a sound temple, an art space, a gallery, and a music studio—spaces curated for inspiration and creation. Embracing authenticity, innovation, and the cultivation of special talents, we aim to provide a supportive hub where diverse creative minds can flourish and collaborate.

Wood Work Shop

As the founder of ROOTS, I feel a personal connection to woodworking, inspired by my father who was a skilled carpenter and contractor. In alignment with this heritage, I am enthusiastic about establishing a woodworking shop. Given the abundance of cedar on the land.

Creative Healing Spaces

We envision crafting private villas across the property, serving as ideal spaces for hosting both income-generating and conscious, healing retreats and special events. Additionally, we plan to establish a pavilion, medicine circle, temezcal and fire site to cater to various healing modalities. Furthermore, luxurious spa facilities, including fitness amenities, yoga space, jacuzzi, a sauna, and massage area, will be created to enhance the overall wellness experience.

Farm to Table

Transformative garden spaces designed to provide picturesque dining settings, with the potential for hosting special lunch or dinner events featuring gourmet farm-to-table meals. Recognizing that each person has a unique role to play in cultivating visions at ROOTS, chefs play a role in a culinary experience that harmonizes with the beauty of our surroundings.



OUR MISSION

Healing Community Spaces

Our focus is on crafting healing spaces tailored for various occasions, including special events, music festivals, art exhibitions, yoga retreats, medicine circles, and community gatherings. These spaces are meticulously designed to offer a creative and transformative outdoor experience, enhancing the atmosphere for music and art special events. Our commitment lies in the intentional curation of environments that foster healing and creativity, providing a sanctuary for individuals to connect, rejuvenate, and immerse themselves in the collective energy of diverse gatherings in harmony with nature.

Co-Creation

Embarking on the journey of co-creation within our community involves utilizing diverse spaces, integrating the elements of land, art, music, and creative development. This process is designed to assist each individual in refining their unique gifts, fostering a collective effort towards community growth and entrepreneurial projects. Through collaborative exploration and the synergy of diverse talents, we aim to create a thriving environment that nurtures both personal development and the advancement of shared endeavors.





MALAMA THE AINA MUSIC FESTIVAL LLC.

Malama the Aina Venue Space

Due to the extensive land available, we can host substantial sized events, providing a means to secure funds for program expansion. This invites an international conscious community to return annually, actively participating in co-creating and contributing to the continuous growth of community projects. Furthermore, this grants us a multitude of hands to engage in the "Malama the Aina" project, as all festival participants actively contribute to the care and stewardship of the land. Ultimately, my overarching vision is to unite conscious communities, bridging gaps between division and hatred, grounded in the principles of peace, love, and community. Furthermore, these venues are available for rental to host other festivals, musical concerts, culinary, art, or special events.





CREATING SPACES



Rose garden. Tree Mazes. Lilikoi Arbors.
Zen and Flower Garden Gazebos. Cabanas.
Honey and Ohia Lehua and Koa Development.
Sustainable Gardens and Orchards.
Herbs and Medicines.

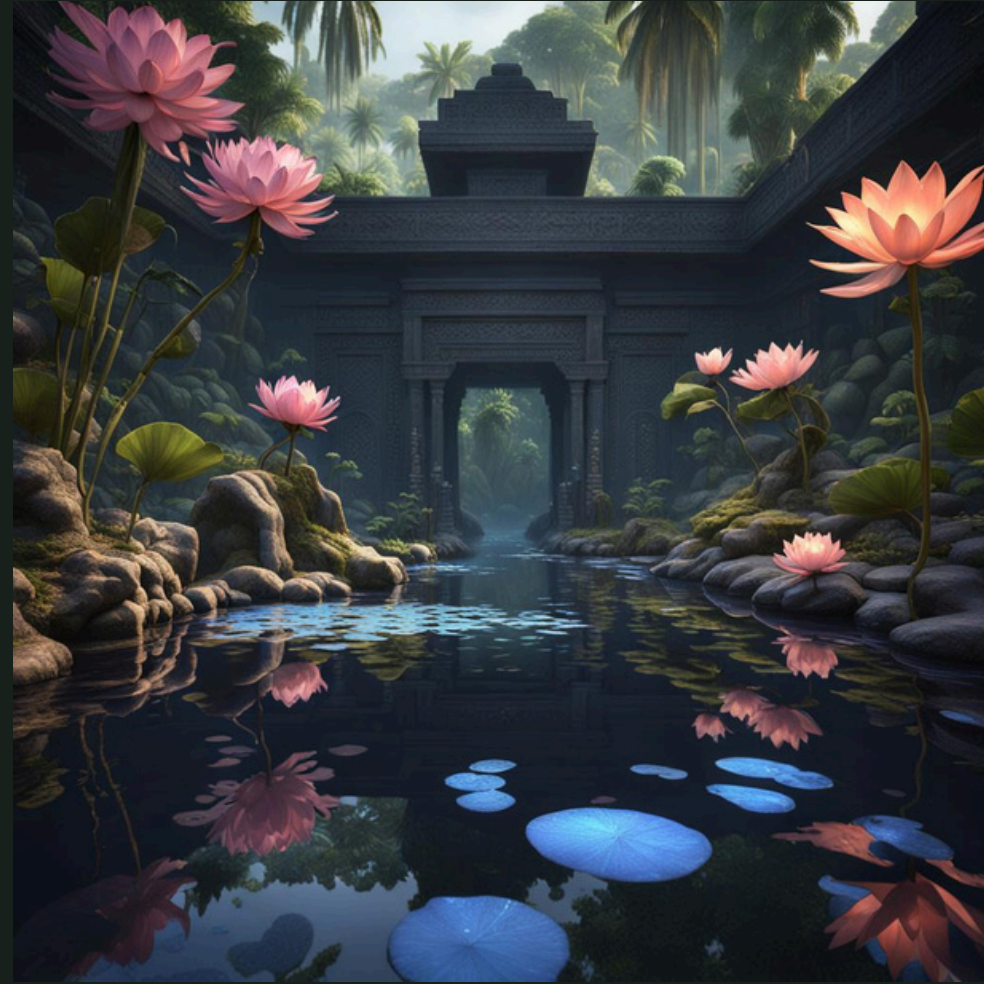




CREATING SPACES

Container pool
Ampitheater
Bamboo Theater





MOOD

Organic wood and lava stone environments working with the natural resources of the land, featuring eco/zen decor, incorporating biophilia and imaginative landscaping. Expansive layouts with bay windows, hammocks, gardens and koi ponds. Outdoor stone showers enhance the outdoor experience. Relax in lounges and cozy group spaces.





ACCOMMODATIONS

Women + Men's dormitory wing + common living space + 10 private rooms on each wing. Locker room restrooms. Heated outdoor lava stone showers. + Camping A-frame glamp pods and creative concept tents and campgrounds.



FLORALS + GARDENS



Hawaiian Bio Reserve
English Garden Greenhouse
Zen Garden
Tropical Floristry
Ikebana





CROPS

Non-commercial organic farming prioritizes sustainability, as opposed to commercial farming, which is often detrimental to the environment. The focus is on producing just enough to support local communities and residents in these areas. Utilizing bamboo and hemp for sustainable materials is a key aspect. Cultivation includes macadamia nuts, mangoes, avocados, bananas, papayas, citrus trees, guavas, lilikois, mangosteen, lychee, goldenberry, jackfruit, and ulu. Additionally, there is a commitment to growing organic greens, berries, kalo, and herbs and medicines for sustenance. We will undertake reforestation efforts by planting Koa and Ohia lehua trees, concurrently fostering honey production through bee farming. Furthermore, there are plans for the development of a mycology project.





Mauka / Makai to
table organic
International
cuisine.



CULLINARY



Excavating Eqpt
Fork Lift
Trailer
Tree Trimming Eqpt
Tractor
INCOME POTENTIAL

HEAVY EQPT



MASCOT

Zero animal cruelty is important to us.
Egg farming for self sustainability.
Couple rabbits and goats for pets.





CONTACT US



+1 808.377.0002



<https://thirdeyehawaii.com/roots-ohana>



rootsretreats@yahoo.com



Honolulu, HI