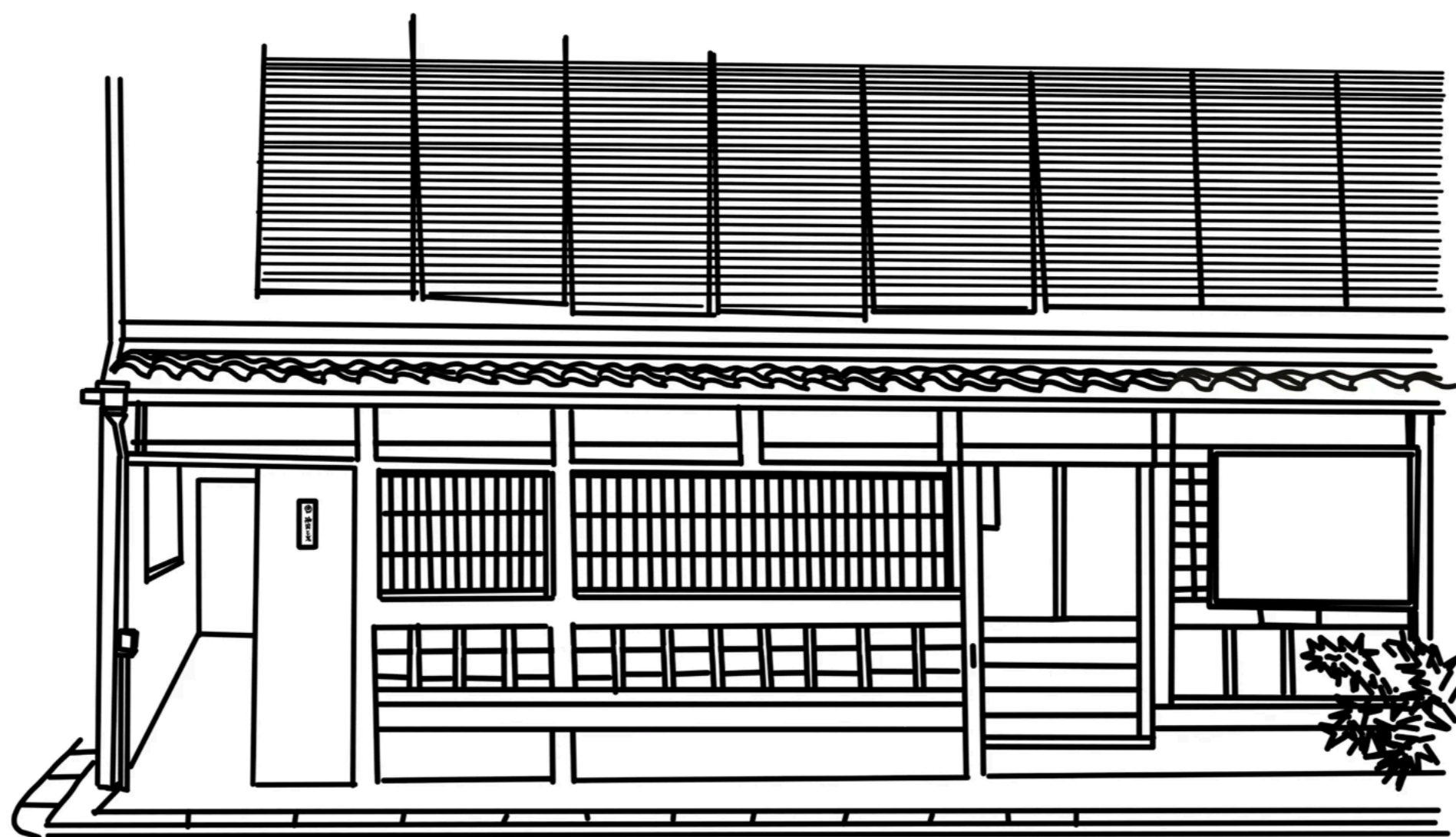


Hikiniku to Come Kyoto

[Back to List](#)



Business Hours

Lunch: 11:00-15:00

Dinner: 17:00-21:00

Regular Holiday

Closed on Wednesday

Address

363 Kiyomotocho, Higashiyama, Kyoto 605-0084 [MAP](#)

TEL:075-708-2529

[Online Advanced Registration \(Paid\)](#) [↗](#)

Registrations cannot be made by phone or social medias.

[X](#) [@hikinikutocomek](#) [↗](#)

How to Visit Hikiniku to Come Kyoto →

Opened on October 22, 2022. This charming building, originally used as a 'kenban'—a traditional office that managed Geiko and Maiko—has been renovated to maintain the building's traditional charm as a historical Machiya in Gion.

The wooden sign of the store was once part of the original building's staircase. The staff wears kimono-style uniforms tailored by a local Kyoto kimono shop, reflecting the Kyoto aesthetic while delivering the unique hospitality of 'Hikiniku to Come'. The second floor of the store features a waiting bar, 'Bar Hikiniku to Come's 2F' where you can enjoy exclusive homemade fruit ice bars.

Bar Hikiniku to Come's 2F



Business Hours

Business hours generally follow those of 'Hikiniku to Come Kyoto.'

※Business hours generally

follow those of 'Hikiniku to Come Kyoto.'

location

In 'Hikiniku to Come Kyoto

