

July 2024
NEWSLETTER

816-234-1011
TWAMUSEUM@GMAIL.COM
10 Richards Road
Kansas City, MO 64116
twamuseum.org



OPEN WED-SAT 10-4
Museum

at 10 Richards Road

From the President, Pam Blaschum

Despite the construction occurring at the downtown airport and the explosions of the Broadway bridge, we have been overwhelmed with visitors recently. It could be due to *Travel and Leisure Magazine* recognizing the **TWA Museum** as the second best Aviation Museum in the United States as stated below:

"Trans World Airlines (TWA) was one of the world's most famous airlines, operating from 1930 to 2001. The museum is dedicated to honoring the airline's legacy through exhibits, artifacts, and memorabilia."

Airline
Archivists/Historians
Association
2024 Conference

June 25 - 27, 2024
Kansas City, Missouri

TWA ENTRANCE

MUSEUM
10 RICHARDS ROAD



In the month of June, the 23rd - 29th, we hosted the **Airliners International's 'Friday Night Under the Props'** event and participated in the collectables show of airline memorabilia. Our museum also hosted numerous tours for the AI attendees. The AI event was a great opportunity for aviation enthusiasts to connect and learn more about the world of commercial aviation.

Board of Directors

Pam Blaschum-President
Caleb Flake-Vice President
Nancy Sitzmann-Secretary
Chris Funk-Treasurer
Don Lueke
John Miller
Judy Gerling
Alice Wasko
Larry Dingman
Steve Wood
Matt Larsen

TWA Operations Manager

John Mays

Archivists

Carol Emert
Zana Allen
Joe Ballweg
Mark Murtha

BSA Merit Badge Program

Art Lujin

Volunteer Coordinator

Shelley Raker

Friends of the Museum Liaison

Belinda Hobbs

Social Media

Matt Larsen
Larry Dingman
Viktoria Cross
Caleb Flake

Media Relations

Judy Gerling

(Continued on page 2)

From the President, Pam Blaschum (continued)

We hosted our first **TWA Experience** on April 23rd! It was a great success and we hope to host many more, with the possibility of a future Royal Ambassador Sunday Brunch and/or Saturday Luncheon. It was exciting to show our guests what it was like to fly TWA First Class in the 60's and 70's. Ah, the glory days! How fortunate I was to be a part of it. See Page Six for details of the **TWA Experience** as it reflects TWA's wonderful First Class service thru the years. Enjoy the pictures!



We also hosted the **Airline Archivists and Historians Association** annual meeting on June 25-27!
It was a busy month for us!

Angel Flight Central at the TWA Museum

Angel Flight Central held an open house at the TWA Museum on May 1. The group presented a special award to Southwest Airlines for their sponsorship. The nonprofit group of aircraft owners, pilots, and friends, arranges free flights for access to health care. Museum volunteers, some in vintage uniforms, served lunch and acted as guides for short museum tours. Additional information regarding the fine work of Angel Flight Central may be found here:

<https://www.angelflightcentral.org/>

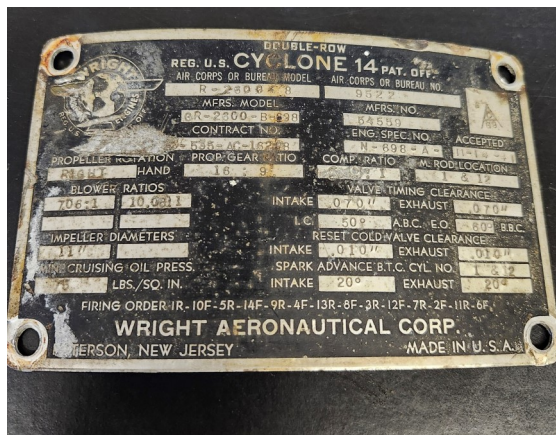
Thanks again to all of our great volunteers for assisting with the event!



Cyclone 14 R-2600 Radial Engine arrives at the TWA Museum

Check out our newest exhibit! Our friends at the Boeing Museum of Flight in Everett, Washington donated this Wright Cyclone 14 R-2600 radial engine. The engine arrived via a gracious donation from Treasurer Chris Funk, who personally covered the shipping expenses. Our goal is to perform a "makeover" on the engine now named "Miss Sandy", in memory of Chris' wife (and longtime museum volunteer) whom recently passed away.

Again, thanks to the Boeing Museum of Flight and Chris Funk for this generous donation! Moreover, kudos to Signature Flight Support and Duty Manager Vic Wylde for his expertise in unloading/moving the engine.



Welcome New Volunteers!



Sandra Clouser worked for TWA at KCAC in data entry and then in the Computer Department. She left TWA to obtain several nursing degrees at UMKC. She later retired from NKC Hospital. But, even though she was not working for TWA, her spouse was, beginning in January 1966 and working at the Overhaul Base until American Airlines left Kansas City. Sandra and Dave had many years of flying all over the world in TWA planes, including spending 4 years with TWA in Jeddah, Saudi Arabia. It was a wonderful life associated with a wonderful Airline!

Tom Nicks, son of Ben Nicks, long time employee (37 years) of TWA Breach Training Center in Overland Park, KS. He is also the nephew of Bill Nicks, SR (37 years) TWA Airfreight and Sales Manager. Brothers Ben & Bill Nicks served in the Army Air Corps during WWII. They returned to the Midwest and embarked on a 37-year journey with TWA. This afforded Tom and his six siblings to travel extensively in the TWA system, East and West Coast and all through Europe.

After 40+ years in the agriculture/manufacturing industry in plant operations, finance, sales and marketing, Tom and his wife Carolyn (teacher) are retired and living in the KC Metro area. They are the parents of 4 sons, 1 daughter, and 4 grandchildren.

In his business and personal travels, Tom traveled extensively throughout the U.S. and Pacific Rim. They are still traveling back and forth to St. Louis, Denver, and Kansas City to visit grandkids and trips to the Northwest. Together, they now travel for the fun things in life like the Caribbean, Mexico, and Europe.



For years Tom has been a fan of the growing TWA Museum and all the memories of his travels. He now volunteers at the museum conducting tours and any other tasks asked of him! His father Ben started his career with TWA working the ticket counter at MKC, moved across the parking lot, and worked in administration in the same building that the TWA Museum occupies on the ground floor.



Bill (Mitch) Mitchell . . . My brother who was 10 years older and helped me to build my first model plane, gets credit for my career and love of aviation. At the age of 12 he told me that anyone that worked for TWA could travel free anywhere TWA flies! I asked "Even mechanics?" He said yes! It was then I knew I wanted to work for TWA! I couldn't get enough of airplanes! While I did have some time in General Aviation at the Johnson County Executive Airport, I always knew where I wanted to be! I was very fortunate to have made a friend that turned out to be the Personnel Mgr. at the KCAC offices at MCI. He offered to get me an interview and the next thing I knew I was pulling carpet, cleaning galleys, and various other duties on the likes of the Boeing 747, Lockheed L1011, and the McDonnell Douglas DC-9. I was able to get certified as an Aircraft and Powerplant Mechanic and finally had the job I wanted so badly.

My first job in aviation was in 1972. While I did have several periods of hiatus, I can fairly claim that I worked close to 40 years in the industry and am very lucky to say that I had a full career in my chosen field, doing the job I really wanted to do, for the company I wanted to do it for, until American took over. . . But that is another story.

New Volunteers Continued. . . .



David Parker. . .

I started at TWA, as a pass brat, in 1972 when my father Ron Parker worked at the overhaul base here at MCI. As I was heading down the path of losing my pass, I started at the ticket counter (MCI) in 1995. After time spent there, I also worked at Worldspan (CRS owned by TW, NW, and DL) where I worked at the help desk, and was an IOT (Instructor Onsite Training) where I traveled the U.S. and taught travel agents. In 1999, I came back to Kansas

City, and flew with Vanguard Airlines as a flight attendant. I finally ended my career as a cross agent (ramp and ticket counter) for Midwest Express/Midwest Airlines in 2005. I am an avid collector of commercial aviation memorabilia and have been an aviation self-proclaimed geek since I was a little boy in a 3-piece suit, flying non-rev with my family.

From the TWA Lover's Kitchen

Hot Chicken Salad Casserole

- 3 cups cooked shredded chicken
- 1 can cream of chicken soup
- 1 cup chopped celery
- 2 tbsp. chopped onion
- 1/2 cup slivered almonds
- 1 can sliced water chestnuts
- 1/2 cup mayo
- 1/2 coup sour cream
- 2 tbsp. lemon juice
- 1/2 bag or more Pepperidge Farms Herb Dressing Mix

Combine all ingredients except dressing mix. Spread evenly in 9 x 13 pan. Sprinkle dressing mix generously on top of casserole. Bake 30 minutes at 350!



UP, UP AND AWAY. . . FLY TWA

2024 Annual Golf Fundraiser
Sponsored by CommunityAmerica Credit Union
Paradise Pointe Golf Complex
Tuesday, September 10, 2024
18212 Golf Course Rd, Smithville, Missouri

4 Person Scramble
\$150 per person
\$600 for each team of 4
Four-person team registration includes:

- Breakfast & Lunch
- Loaded Goodie Bag
- Putting Contest, Mulligans, Drink Tickets included
- 18 Holes of Golf with Cart
- Snacks and Beverages

Awards at 3 PM

For sponsorship information, call the TWA Museum at 816-234-1011
or
Bruce Slimmer at 913-927-9876

Register by scanning the QR Code or register online at:
Charitygolftoday.com/TWAMuseum24

Save the Date!
Santa's Visiting the TWA Museum
Saturday, November 30th
11:00 AM - 1:00 PM





THE TWA Museum is proud to announce The TWA Experience

A special evening for you and your group of 12 or more!

You will begin your experience with cocktails and appetizers in the Ambassador Club

Enjoy a fashion show of Vintage TWA Uniforms!

You are now ready to go through the jetway and board your flight!

Once seated in the cabin you will be treated to a hot towel, sorbet and a glass of Champagne.

Next, you will be served House Salad accompanied by Homemade Artesian Bread and Honey Butter served on
Royal Ambassador China.

Your choice of Beef or Chicken Entree

Three Cheese Au Gratin Potatoes

Vegetable Medley

A Fruit & International Cheese Plate

Crème Brulé with Berries & Whipped Cream

Coffee

Red or White Wine served with Dinner

Catered by Emily McMurray of Gourmet-ish!

\$250 per Person

Minimum number of Guests-12 (Maximum of 25 Guests)



Thinking of Donating Items to the Museum?

Before sending or dropping off items to the museum, please send an email to:

twajohnmays@gmail.com

describing your donation, list of items and pictures if possible.

We will respond as soon as we can!
We truly appreciate the donations we receive but are running out of storage room.

Thank you for your consideration!



Want to Book a Tour of 10 Guests or More?

Simply follow this link to book your tour online:

<https://twamuseum.org/group-tours>

All group admission prices require a minimum of **10 guests** paying in one transaction.

Reservations are required. Please book **72 hours** before your visit date.

Group Admission Fees:

Adults (ages 17-59), 10 people or over – \$10.00 each.

Youth and Seniors pay usual rates, regardless of number in the group.

Seniors (age 60+) – \$8.00

Youth (ages 6-16) – \$7.00

Children (ages 1-5) – FREE



Check out our newest exhibit!

Know All Ye By These Presents, that members of the TWA Museum, have rocketed round trip to the moon from the Disneyland Spaceport via the TWA Rocket Ship, and is hereby awarded this Lunar Flight Certificate.

The distance to the moon is 238,857 miles which is exceeded daily by TWA during it's regularly scheduled Earth flights across the U.S.A., Europe, Africa and Asia.

At 76 feet (23 m) tall, it was the tallest structure in the theme park, 8 feet (2.4 m) taller than the Sleeping Beauty Castle. Adjoining the rocket was the "Flight to the Moon" attraction, which later became "Mission To Mars" in 1975.

This **TWA Moon Rocket** model is a 1 of 1 Artist Proof created by Disney artist Allyson Vought. Being a Commercial Pilot and her love for aviation in addition to her having creating so many iconic classic Disney collectibles over the years, her experiences naturally led to her to making this iconic Moon Rocket that was such a huge part of the Anaheim Tomorrowland experience.

Made of mixed media, the rocket stands an impressive 53" tall and sits proudly on a triangle shaped base of almost 22" that represents the blast pit and railing as seen at the original Disneyland Tomorrowland Rocket to the Moon.



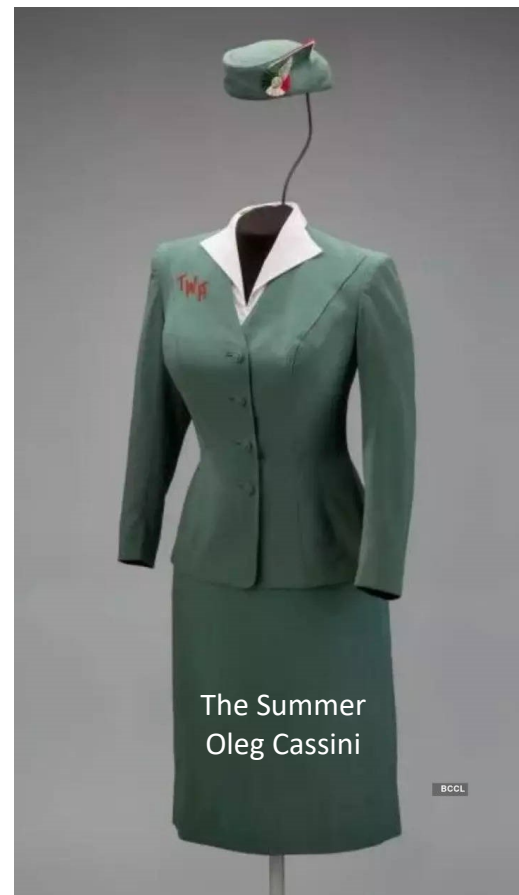
History of TWA Flight Attendant Uniforms

(Enjoy the second installment of the history of the infamous TWA Flight Attendant Uniforms!)

1944-1955 The French designer Christian Dior was a strong influence in its creation. It was affectionately nicknamed the “Cut-Out” because of the red cutout TWA logo on the right shoulder. It was worn between 1944 and 1955. Through the years the hemline rode up and down with changing fashions and the design of the jacket also varied. It was a medium blue gabardine with a fitted, single-breasted jacket with covered buttons. It had a navy blue rayon/crepe blouse-slip with a rounded neck. There was a matching blue hat with a red and blue cockade on which were pinned new silver wings. The winter coat was a deep red, known at the time as TWA Red! The Hostesses wore navy pumps and carried a navy bag.

SUMMER, 1955-1960 Oleg Cassini designed a new uniform. It was keyed for color harmony with the interior of these new planes! It was a completely new look for Air Hostesses. Lightweight green wool with a collarless fitted jacket with TWA embroidered on it in red. The slim summer skirt was belted. We wore a white blouse-slip. Shoes were brown and white spectator pumps. There was a clear plastic raincoat available to slip on to run from the ramp office up the steps and on to the airplane in inclement weather. This was before the advent of jetways!

WINTER, 1955-1960 Oleg Cassini designed for winter, a brown wool sharkskin ensemble. The jacket also had TWA embroidered in red on the right side. As you can see, the jacket is long and collarless with five covered buttons. A straight tailored skirt was worn over a white blouse-slip, which had the TWA insignia on it as well. A matching hat was worn at all times and had a red cockade upon which the wings were pinned. Accessories were brown, stiletto heeled pumps, leather shoulder bag, gloves and a fiberglass hostess kit. The cost of this uniform ensemble was \$128.72 which was deducted monthly from the Hostess’ paycheck.



Former TWA Museum visitor returns as a Pilot!

Karoline Pearce first visited the TWA Museum in 2019 as a student pilot. When she left the museum that day she decided that she should just go ahead and become a pilot as her career! She returned to the museum in April as Pilot for **Endeavor Airlines, a subsidiary of Delta**. Karoline is based in New York. She wanted to come back to the museum the first chance she got! Congratulations Karoline and thanks for coming back to see us!!!



New Posters in the Gift Shop!

Call the Museum at 816-234-1011 or email: twajohnmays@gmail.com

TWA Museum President, Pam Blaschum helps visitors, Gatlin and Buster with engineering some paper airplanes!

Gatlin and Buster are the Great Grandchildren of museum volunteer, Larry Chalberg.



Jim Menown and his Grandson, Liam Cailteux came to visit the TWA Museum in April. We put Jim to work helping Volunteer Larry Chalberg move a cabinet. You never know when you'll be called into service while visiting the TWA Museum! For the record, we think Liam is about the cutest little pilot ever!



THANK YOU!

The TWA Museum would like to thank the following businesses for their support in so many ways!



IWERX for allowing us use of their space for events and their continuing support!



Community America for their history and partnership in the future with the TWA Museum!



Silver Wings International for their generous and consistent donations they make to the TWA Museum!

Chris Funk owner of **Picture and Frame Industries** is our Treasurer and a member of our Board Directors. Most of the posters you see in the museum, as well as numerous prints, were framed by his company.



Clipped Wings International for their generous donation of \$49,000 to the TWA Museum and their wonderful in-person support at special events!



Signature Flight Support for their continued support in all our endeavors!



Thank you to our Caterer **Emily McMurray of "Gourmet-ish"**, for helping us with the many events that we host!

Also, thank you to our wonderful **TWA former employees, Friends of the Museum, and all those who have donated items and money to make sure we preserve the history of TWA here in Kansas City, as well as the world.**





Museum Legacy Society

The TWA Museum Legacy Society has been established to provide you the opportunity to commit a gift during your lifetime that will help preserve the TWA Museum for years to come!

Dying is not something we want to think about. However, if we want to have a say in what happens after our passing, we need to make sure our wishes are known ahead of time. If in lieu of flowers you would like memorial donations made to the TWA Museum in your memory or the memory of a loved one, make sure that your loved ones are told of your wishes or if you would like to leave part of your estate to the museum, make sure it is put in your will or trust to that effect.

All of the memorial donations are tax deductible as the Museum is a 501C3 nonprofit.

Need to Conduct Some Research?

The museum offers several links and resources in which to perform research. The museum's archives website and digital collection is a great place to start. Most of the information that you seek may be found by searching through the resources offered here:

<https://twamuseum.org/research>

<http://www.twamuseumarchives.org/>

MAKE YOUR PROM OR ENGAGEMENT A SPECIAL MEMORY AT THE TWA MUSEUM



We have had several requests for **Prom and Engagement Pictures** to be taken with Ellie, in our **vintage phone booths** or in the **Ambassador Club**. Now we can include our **Cabin Trainer**! We love to get our pictures out there and welcome the opportunity for those special moments in time.

A \$25.00 donation is suggested for personal phone photos and a \$50.00 donation for professional photographers. Reservations are recommended so we can secure the volunteers we need to help with this one of a kind opportunity. Call the Museum at **816-234-1011** to make your reservation!



TWA Museum Hours

Wednesday - Saturday 10 AM to 4 PM

Zana Allen
 Joe Ballweg
 Dianna Bennett
 Pam Blaschum
 Margo Cabillonar
 Larry Chalberg, Sr
 Dennis Claus
 Kevin Clossick
 Sandra Clouser
 John Coleman
 Jawn Collins
 Larry Dingman
 Robert Eckerle
 Chris Elkins
 Carol Emert
 Keith Epperson
 Caleb Flake
 Margie Foley
 Chris Funk
 Judy Gerling
 Joe & Belinda Hobbs
 Matt Larsen
 Janet Lhuiller
 Larry Lillge
 Don Lueke
 Art Lujin
 Gary Mayden
 John Mays
 Conner McCollim
 Bill (Mitch) Mitchell
 Lori Moore
 David Morningstar
 Eric Morse
 Mark Murtha
 Nina Newberry
 Tom Nicks
 Shelley Tork Raker
 Ray Rowe
 Frank Ruege, Jr
 Lane Sisson
 Nancy Sitzmann
 Jay Stewart
 Mark Townsend
 Pam Tucker
 Alice Wasko
 Chelsey Willetts
 Craig Willetts
 Steve Wood

TWA Museum Volunteers

TWA Museum Volunteers

TWA Museum Volunteers



Donation Form

Your support ensures that the Legacy of TWA and it's influence on early aviation remains intact within future generations, and for that WE THANK YOU!

If you would like to make a donation through this newsletter, please fill out the following form and mail it to the volunteers at:

TWA Museum
10 Richards Road, Suite 110
Kansas City, Missouri 64116

Name _____

Address _____

Phone Number: _____

Amount Enclosed:

___\$250 ___\$500 ___\$750 ___\$1000 ___Other_____

Friend of the Museum

Additionally, if you would like to become a Friend of the Museum, please choose from the options below:

_____ **Individual - \$45.00**

Benefits: Member card, unlimited free museum admission 1 year, a 10% discount in the gift shop and online sales, and advance notice to special events and exhibits.

(Senior \$35.00)

_____ **Family (Mother, Father, Son, Daughter)-\$75.00**

Benefits: Member card, unlimited free museum admission for family members 1 year, a 10% discount in the gift shop and online sales, and advance notice to special events and exhibits.

(Senior \$65.00)

_____ **Founders Club-\$2,500.00**

Benefits: Member card, free family entry life of donor, 20% discount on all merchandise, newsletter, advance notice of special events and exhibits, PERMANENT RECOGNITION on beautiful plaque displayed in the TWA Museum.

TWA Museum
10 NW Richards Rd
Kansas City, MO 64116-4253