

PARKING AREA FOR THOSE NEEDING EXTRA ASSISTANCE

Due to the Buck O'Neil Bridge Construction Project, a large area of our parking lot has been lost. For those guests who need extra assistance, please park in this area. There are limited handicapped spaces available near the building entrance, and VERY limited parking spaces in the lot. If no spaces are available when you arrive, please park in the VMLY&R bus shuttle lot.

* If you do not require extra assistance, PLEASE park in the VMLY&R bus shuttle lot. We would like to accommodate as many of our guests as possible, who require extra assistance, by having them park as close to our building as possible.

* If you are arriving via the Northbound 169 Ramp, follow the red arrows on this map. At the end of the ramp is a stop sign. Keep straight – DO NOT turn into the round-a-bout. After you pass the round-a-bout, you will turn to the left. Cross over Richards Road. Look for the signs to direct you to the Museum parking lot.

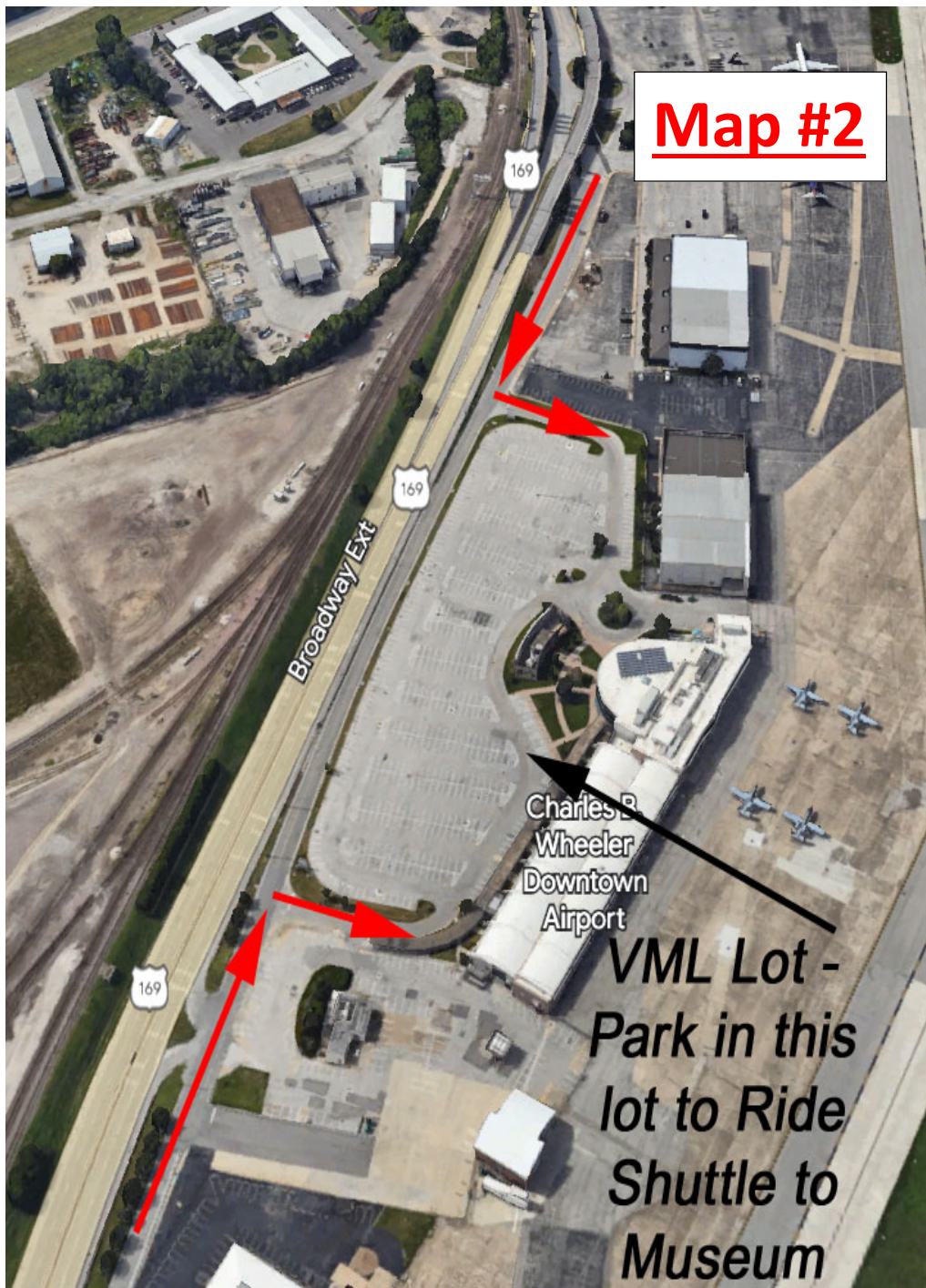
* If you are arriving via the Southbound 169 Ramp, follow Richards Road and the red arrows on this map and Map #3. Look for the signs to direct you to the Museum parking lot.

* The yellow outline on this map details parking areas that are blocked off due to construction.

* If you are parking in the VMLY&R bus shuttle lot, please refer to Map #2 included in this document.

If you have any issues, please call

John Mays at 913-515-0080.



VMLY&R BUS SHUTTLE / PARKING LOT AREA

If you do not require extra assistance, PLEASE park in the VMLY&R bus shuttle lot. We would like to accommodate as many of our guests as possible, who require extra assistance, by having them park as close to our building as possible.

* Shuttle Hours – The shuttle will be available from 5:30 PM to 11:00 PM. There will be no shuttle service after 11:00 PM. The shuttle will drop-off / pickup guests at the Museum building entrance. The shuttle will run approx. 10-15 minutes to/from the Museum and the VMLY&R lot.

* If you are arriving via the Northbound 169 Ramp, please refer to Map #1. At the end of the ramp is a stop sign. Keep straight – DO NOT turn into the round-a-bout. Look for the signs to direct you to the Museum parking lot. Instead of driving straight into the lot, take an immediate right onto Richards Road. Follow the red arrows on this map until you reach the VMLY&R lot. Pull into the lot and park in any space close to the Shuttle bus pickup / drop-off point.

* If you are arriving via the Southbound 169 Ramp, follow Richards Road and the red arrows on this map and Map #3. Look for the signs to direct you to the VMLY&R parking lot. Pull into the lot and park in any space close to the Shuttle bus pickup / drop-off point.

* **IMPORTANT:** DO NOT park in any of the VMLY&R guest/visitor parking spots (VMLY&RL does have some employees who work on the weekends).

If you have any issues, please call

John Mays at 913-515-0080.



IF YOU ARE ARRIVING VIA THE SOUTHBOUND 169 RAMP

Due to the Buck O'Neil Bridge Construction Project, if you are entering from Southbound 169, you will be forced to exit off of 169 Highway. Once you reach the stop sign at the end of the ramp, turn left. Follow Richards Road and the red arrows on this map to reach the Museum parking lot, or the VMLY&R bus shuttle lot.

* A large area of the Museum parking lot has been lost due to construction. For those of you who need extra assistance, please refer to Map #1 in this document. There are limited handicapped spaces available near the building entrance, and VERY limited parking spaces in the lot. If no spaces are available when you arrive, please park in the VMLY&R bus shuttle lot.

* If you do not require extra assistance, PLEASE park in the VMLY&R bus shuttle lot – refer to Map #2 in this document. We would like to accommodate as many of our guests as possible, who require extra assistance, by having them park as close to our building as possible.

If you have any issues, please call

John Mays at 913-515-0080.