

Your Connection to World-Class Dry Bulk Material Processing Solutions



BUILT FOR THE BULK OF IT

Our team brings decades of combined experience in industrial processing equipment—and a passion for solving real-world challenges with high-performance solutions.

From initial consultation to after-installation service, we don't just sell equipment—we deliver results. GQI represents trusted world-class manufacturers and brings their innovations to the North American market, specializing in industries where precision, safety, and uptime are everything.

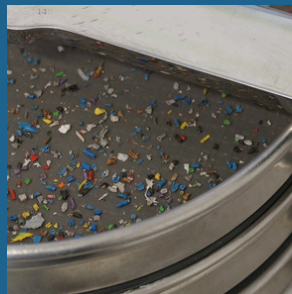
Trusted By Industries That Can't Afford Downtime

Solutions That Move Material - and Business

We help industrial processors find the right equipment - and keep it running at its best. GQI offers a full portfolio of:

- **New Equipment** – From screening and conveying to sorting and drying
- **Aftermarket Support** – Aftermarket Parts, custom screen replacements, wear protection solutions, and warehousing & inventory support
- **Custom Solutions** – Application-based solutions for new and existing processes seamlessly integrating into your operations
- **Field Services** – Installation, start-up, repairs and preventative maintenance

**Food | Nutraceuticals | Pet Food | Pharmaceuticals
Chemicals | Plastics | Agricultural & Feed
Aggregates | Mining & Minerals | Recycling**



Screensers & Classifiers



Bulk Bag Handling



Sampling and Containment



Mechanical and Pneumatic Conveyors



Dust Collection and Drying



Predictive Machine Monitoring



Aftermarket Support



Project Management

Why GQI?

- **Application-Driven** – Every solution is built around your process, not our catalog.
- **Global Reach, Local Support** – We bring cutting-edge, world-class technologies to North America with boots-on-the-ground support.
- **Lifetime Partnership** – From day one to retirement, we're here with the equipment, parts, and service you need to stay efficient and competitive.
- **Performance First Support** – Proactive service programs designed to minimize downtime, extend equipment life, and keep your operation running at full strength.
- **World-Class Technology** – High-quality processing equipment built with advanced engineering to deliver precision, durability, and long-term performance.

**Innovative Solutions.
Reliable Support.
Always a Step Ahead.**



Services That Keep You Running

At GQI, we support you far beyond the purchase. Our seasoned technicians are here to ensure your equipment performs at its peak.

Equipment Start-Up & Commissioning

Seamless installation to get your systems running right from day one.

Preventative Maintenance & Monitoring

On-site evaluations, customized PM schedules, and hands-on service with the option to integrate predictive machine monitoring for added insight and performance tracking.

Critical, Spare & Wear Part Replacement

Fast, dependable access to OEM and third-party parts, with custom inventory strategies to keep your operation moving.

Equipment Repairs & Upgrades

On-site fixes and performance improvements when and where you need them.

Operator Support & Field Training

Hands-on guidance to ensure your team runs equipment confidently and safely.

Let's Talk About What GQI Can Do For You

**Call Us at
(773) 234-8003**

**Reach out at:
info@gqind.com**

**Visit us online at
www.gqind.com**

