

Harford County Public Schools



Sean Bulson
Superintendent of Schools

Katie Ridgway
Director of Strategic Initiatives

Our Schools

55 Schools

- 9 Comprehensive High Schools
- 9 Middle Schools
- 33 Elementary Schools
- Harford Technical High School
- Swan Creek School (2)
- Harford Academy

Unique School Designations

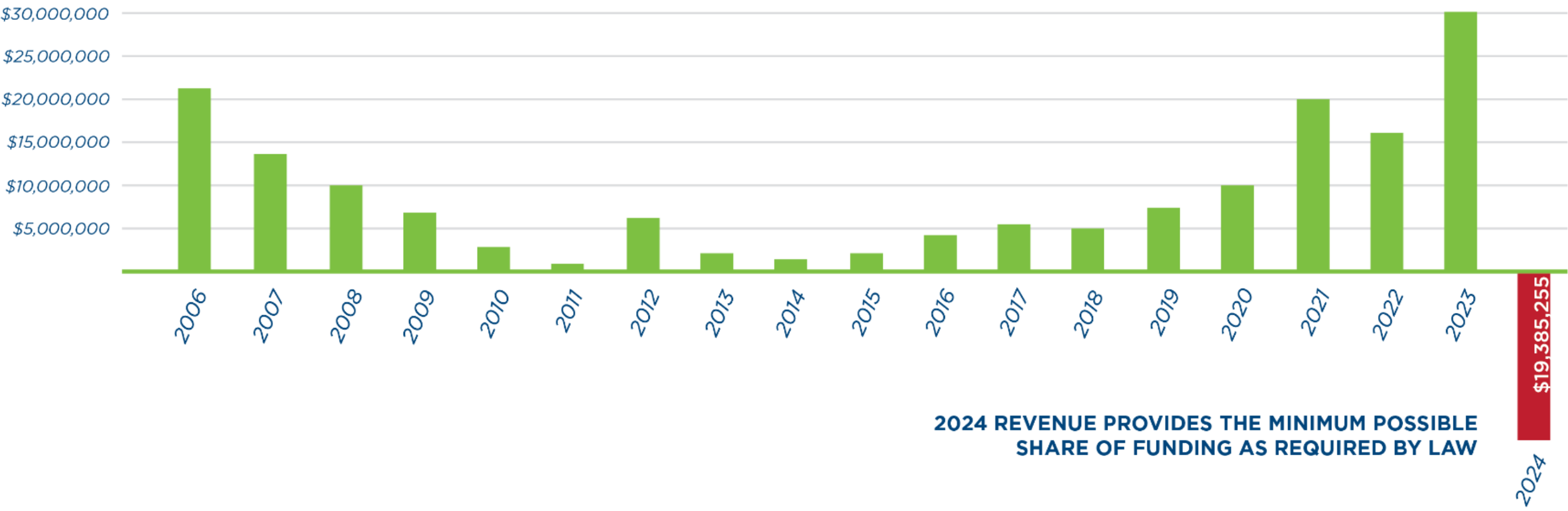
- 36 Magnet Programs
- 10 Title 1
- 8 Priority Schools
- 11 Community Schools
- 5 Blueprint Low-Performing
- 8 Target Schools in Improvement

Enrollment

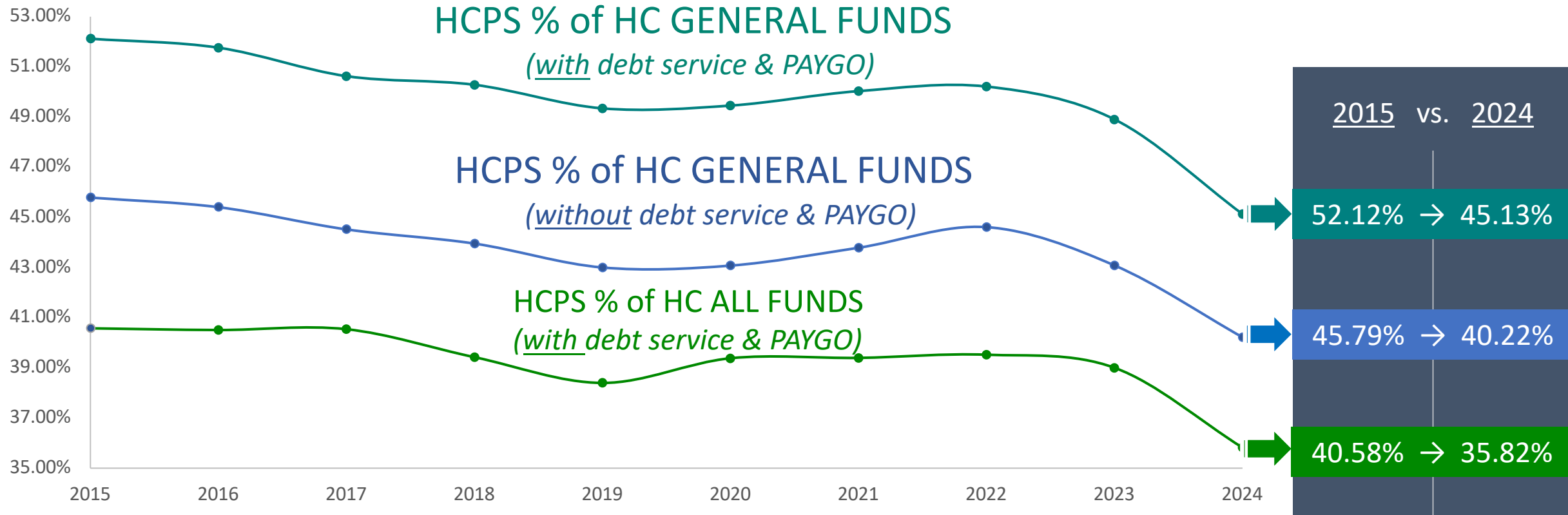
Academic Year	Total Enrollment All Harford Schools	Total Enrollment English Learners	Official Total Enrollment For Students with Disabilities (Eligibility 1, 2, 6)
2018	37,780	753	5,036
2019	37,826	805	5,143
2020	38,429	790	5,034
2021	37,333	858	5,338
2022	37,920	963	5,744
2023	38,177	1032	5,721

- Data Source: MD report card data is updated as of **September** of each academic year (Official Enrollment).
- Current enrollment in eSchoolPlus updated as of May 2, 2023, is **38,177**.
- Current enrollment of students with disabilities (Eligibility 1, 2, 6) as of May 3, 2023, is **5,721** (Office of Special Education).
- The English Learners count of **1032** is updated as of May 2, 2023 (Office of English Language Learners and World Studies).

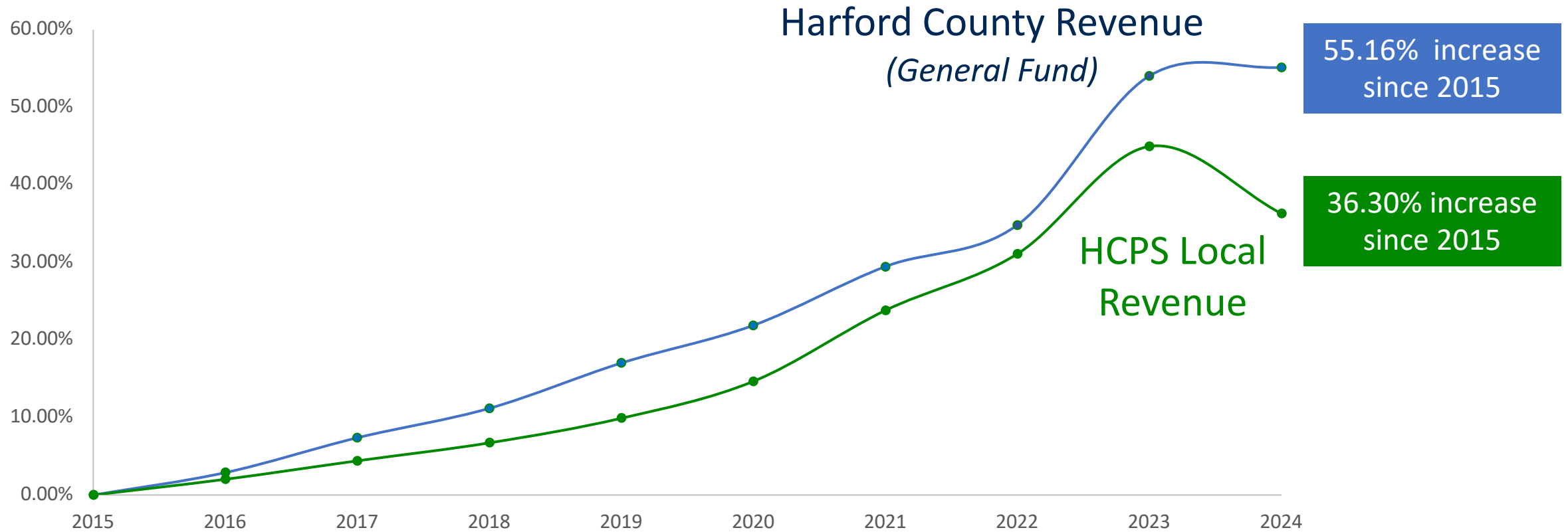
HCPS local funding change from previous year



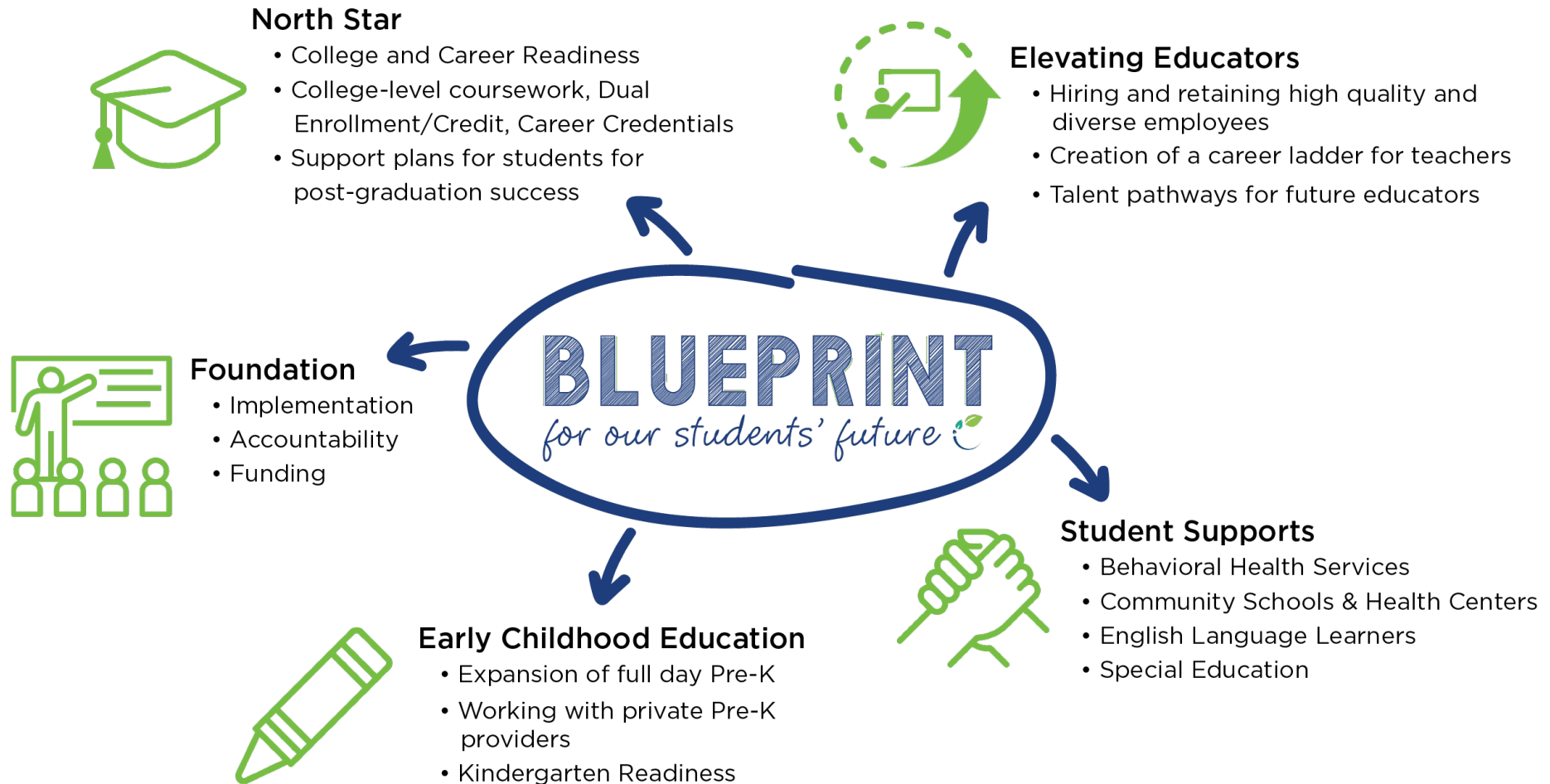
HCPS Share of County Budget



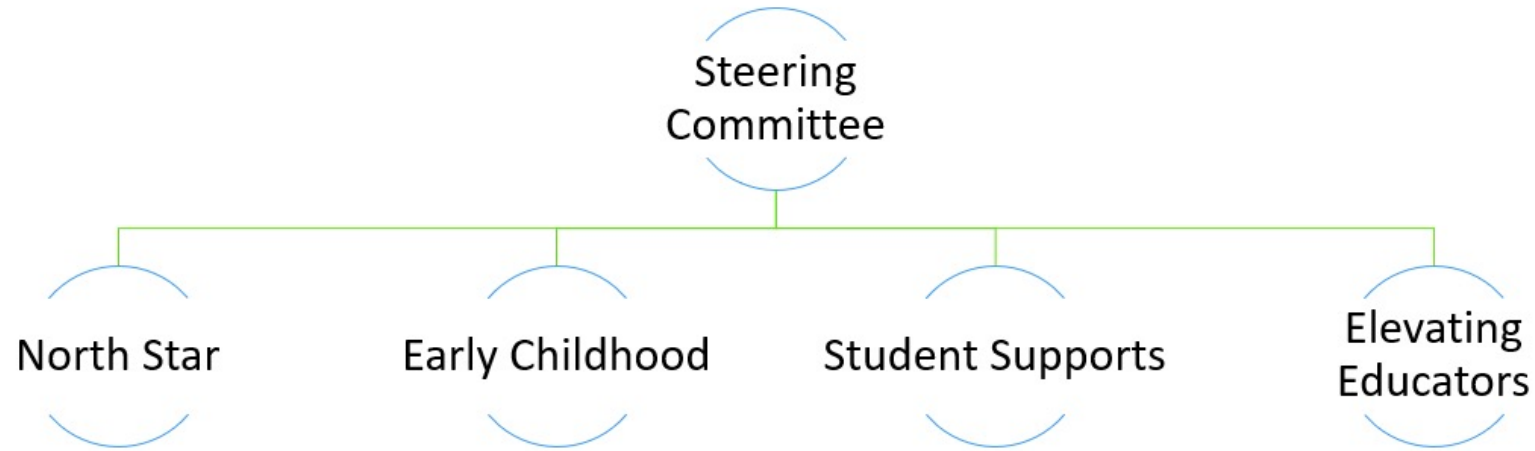
HCPS & County Revenue



Blueprint for Maryland's Future



Blueprint for Maryland's Future



All Committee Participants

Total

Community Partners	64
HCPS Central Leadership	56
HCSP School-based Staff	36

156

Unique Participants

Blueprint Requirements Budget Impact

- FY24 salaries for pre-K program is \$4.6 million
- Required expansion adds more salaries each year beyond the additional classes
- Additional compensation required for paraeducators pursuing their CDA/AA and achieving their AA
- Required HCPS technical support to private providers for accreditation
- Capital costs for new pre-K classrooms



1: Early Childhood

- Local share of National Board Certification incentive will increase \$500,000-\$850,000 each year
- Funding increase to close the gap for a required starting teacher salary of \$60,000 by July 1, 2025
- HCPS must negotiate a meaningful career ladder with local share of financial incentives
- Career ladder teaching requirements will impact staffing
- Per the implementation plan, HCPS must invest in grow-your-own

2: Elevating Educators



- \$2.3 million required distribution to Susquehanna Workforce Network
- Post-CCR pathways must be free for CCR-ready students:
 - dual enrollment costs,
 - advanced placement courses (not yet able to fund tests),
 - international baccalaureate,
 - Harford workforce investment program
 - staffing to support apprenticeships



3: College & Career Readiness

- HCPS FY24 Budget included additional supports for students.
 - 10 English Learner Teachers
 - Additional staff for special education, occupational therapy, speech language pathology, & behavior analysts
 - Community schools (concentration of poverty) district support
- State only partially funds required Behavioral Health Coordinator



4: Student Supports

To continue to receive full state funding, *we must implement all Blueprint legislation.*

The state provides a portion of the funding needed for the Blueprint's substantial and costly requirements, but the *expectations are that local funding agencies will provide sufficient funds for the remaining required costs.*

BLUEPRINT
for our students' future

Blueprint – An Equity Story



Blueprint – Highlights



HCPS Blueprint



<https://www.hcps.org/superintendent/blueprint.aspx>

HCPS Administrative Costs

