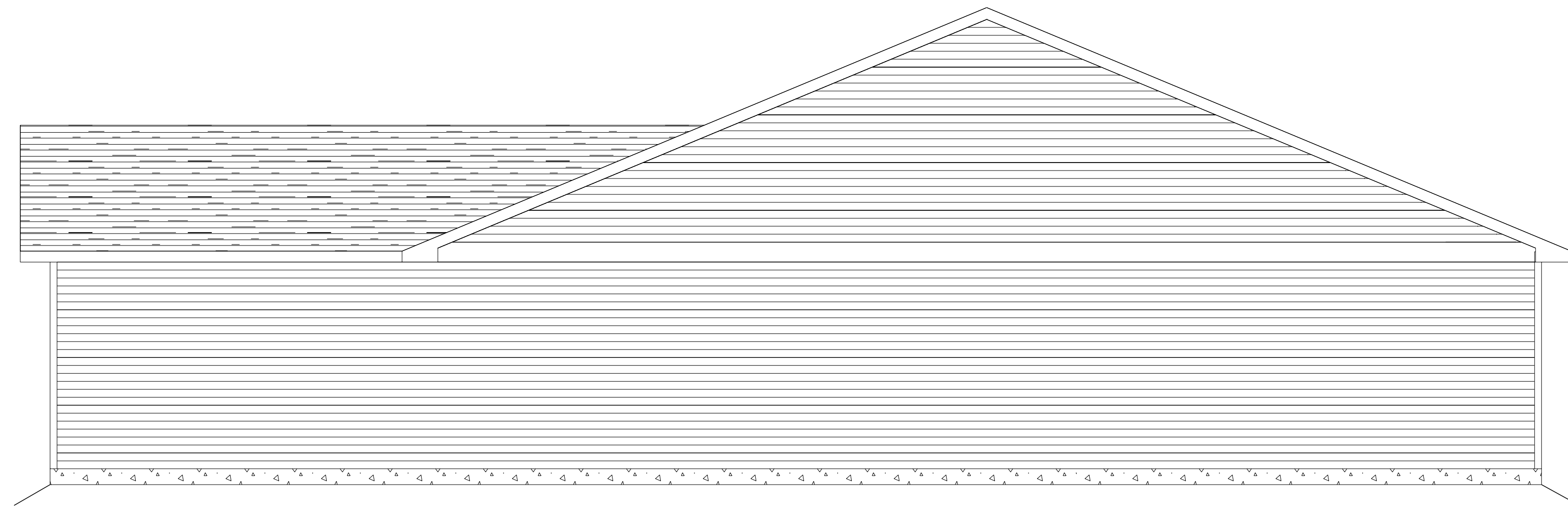
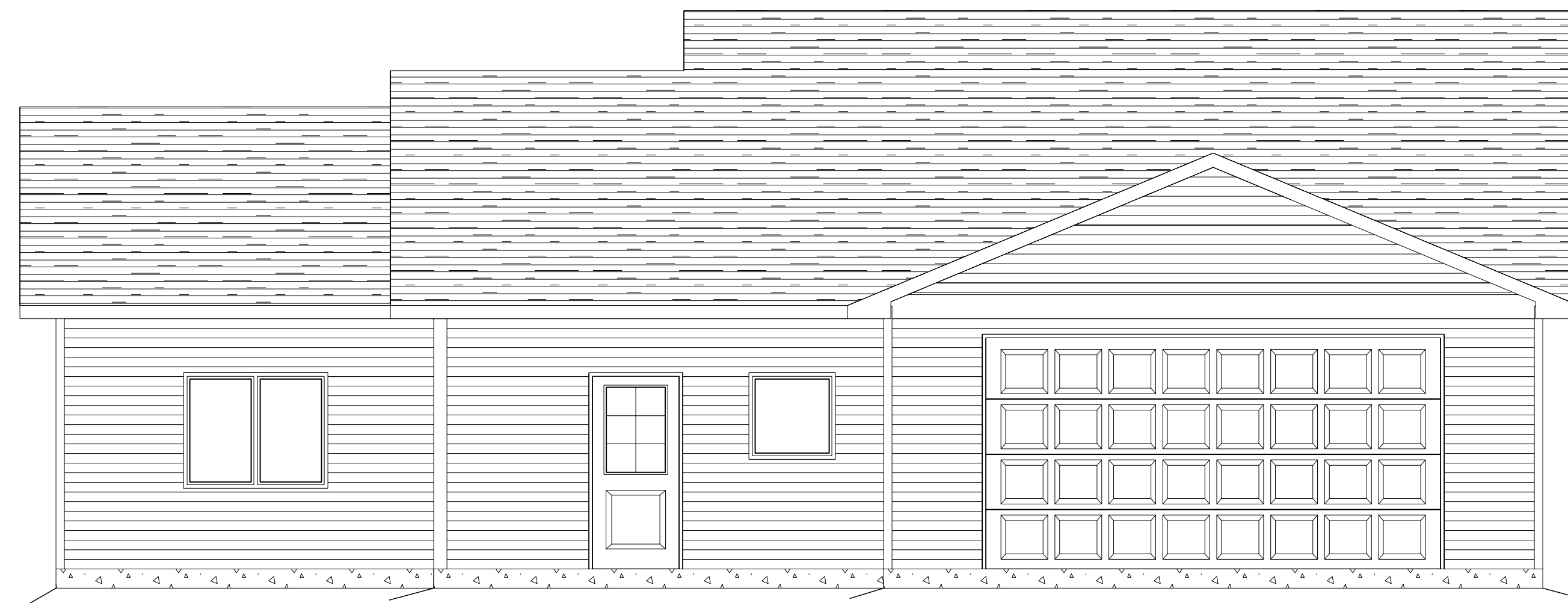


THESE ARE PLANS PROVIDED BY AN EXPERIENCED CAD DRAFTSMAN BUT NOT ENGINEERS OR ARCHITECTS. THE DISTRIBUTOR OF THESE PLANS MAKES NO GUARANTEE ON ANYTHING INCLUDING, BUT NOT LIMITED TO: MATERIAL LISTS, STRUCTURE INTEGRITY AND PRICING. IT IS THE BUILDER/CONTRACTORS RESPONSIBILITY TO FOLLOW ALL APPLICABLE BUILDING CODES REGARDLESS OF THE DOCUMENTS PROVIDED.

WHILE EVERY PRECAUTION HAS BEEN TAKEN TO ASSURE THAT ALL DIMENSIONS AND DETAILS ARE CORRECT, IT IS THE RESPONSIBILITY OF THE BUILDER TO VERIFY ALL MEASUREMENTS PRIOR TO CONSTRUCTION. NORTHWOODS LUMBER CO. ASSUMES NO RESPONSIBILITY FOR THE PROPER CONSTRUCTION OF THIS PROJECT.



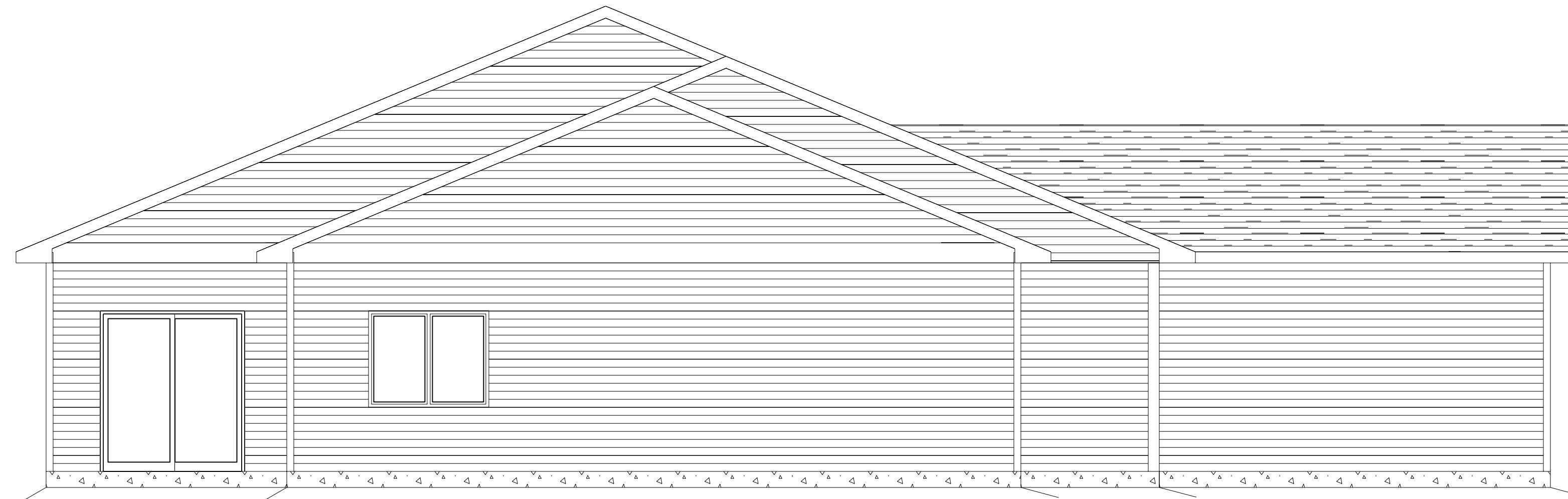
**LEFT ELEVATION**  
SCALE: 1/4" = 1'-0"



**FRONT ELEVATION**  
SCALE: 1/4" = 1'-0"



**REAR ELEVATION**  
SCALE: 1/4" = 1'-0"



**RIGHT ELEVATION**  
SCALE: 1/4" = 1'-0"



PROJECT:

DURUM I RH 2020

JOB INFO:

JOB NO.:  
 DRAWN BY: NAB  
 SCALE: 1/4" = 1'-0"  
 DATE: 8/6/2020

DRAW INFO:

THESE ARE PLANS PROVIDED BY AN EXPERIENCED CAD DRAFTSMAN BUT NOT ENGINEERS OR ARCHITECTS. THE DISTRIBUTOR OF THESE PLANS MAKES NO GUARANTEE ON ANYTHING INCLUDING, BUT NOT LIMITED TO: MATERIAL LISTS, STRUCTURE INTEGRITY AND PRICING. IT IS THE BUILDER/CONTRACTORS RESPONSIBILITY TO FOLLOW ALL APPLICABLE BUILDING CODES REGARDLESS OF THE DOCUMENTS PROVIDED.

WHILE EVERY PRECAUTION HAS BEEN TAKEN TO ASSURE THAT ALL DIMENSIONS AND DETAILS ARE CORRECT, IT IS THE RESPONSIBILITY OF THE BUILDER TO VERIFY ALL MEASUREMENTS PRIOR TO CONSTRUCTION. NORTHWOODS LUMBER CO. ASSUMES NO RESPONSIBILITY FOR THE PROPER CONSTRUCTION OF THIS PROJECT.

SHEET NO.

2 / 2

**FIRST FLOOR PLAN**  
 9'-1 1/8" WALL HGT.  
 LIVING SPACE: 1,664 SQ. FT.  
 GARAGE SPACE: 659 SQ. FT.  
 CASEMENT WINDOWS

