



MASTER™
SERIES

AO
AMERICAN
ORTHODONTICS

I have been using Master Series brackets for years and will continue to stick with them. They deliver the smaller dimensions that my patients demand, and allow me to fully display my technical skills.

Their width allows rectangular arch wire installation in overlay, gingivals or occlusals, on either the maxilla or mandible. Torque is perfectly transmitted, leveling is never a problem, and rotation control is excellent. Master Series brackets are a valuable part of my practice – and by far some of the best brackets in the industry.

Dr. Frank Eichelberger – Dijon, France



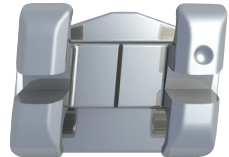
Time Tested treatment

Experience Master Series - the versatile, metal twin system that orthodontists around the world have trusted for more than 25 years. Each bracket's technologically advanced, visually intuitive design adapts seamlessly with your clinical expertise and allows you to treat each patient the way you see fit. Master Series' patented design dramatically increases bonding precision – leading to exceptional results with fewer wire bends.



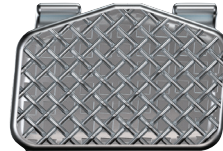
Diagonal Torque™

Achieves predictable expression of torque by keeping the center of the arch slot over the center of the base. A lower profile also helps reduce occlusal interference.



Diagonal Angulation™

Delivers precise bracket placement with visual cues - horizontal components are parallel to occlusal plane, and vertical components are parallel to long axis of tooth.



Proven bond strength

Produces a strong bond every time with patented, tooth specific Maximum Retention™ bonding pads. Dual mechanical retention is achieved by layering 80 gauge mesh over an etched foil base.



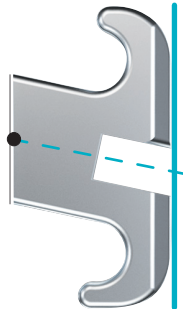
Fully synchronized systems

Synchronizes in/outs throughout the entire arch and helps deliver a more comfortable patient experience.

The only bracket system combining both Diagonal Torque™ and Diagonal Angulation™

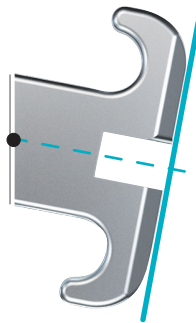
AMERICAN ORTHODONTICS Diagonal Torque

Center of slot over center of base
with low profile



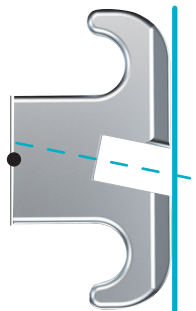
COMPETITOR Torque in Base

Center of slot over center of base,
but higher profile, increasing the chance
of occlusal interference



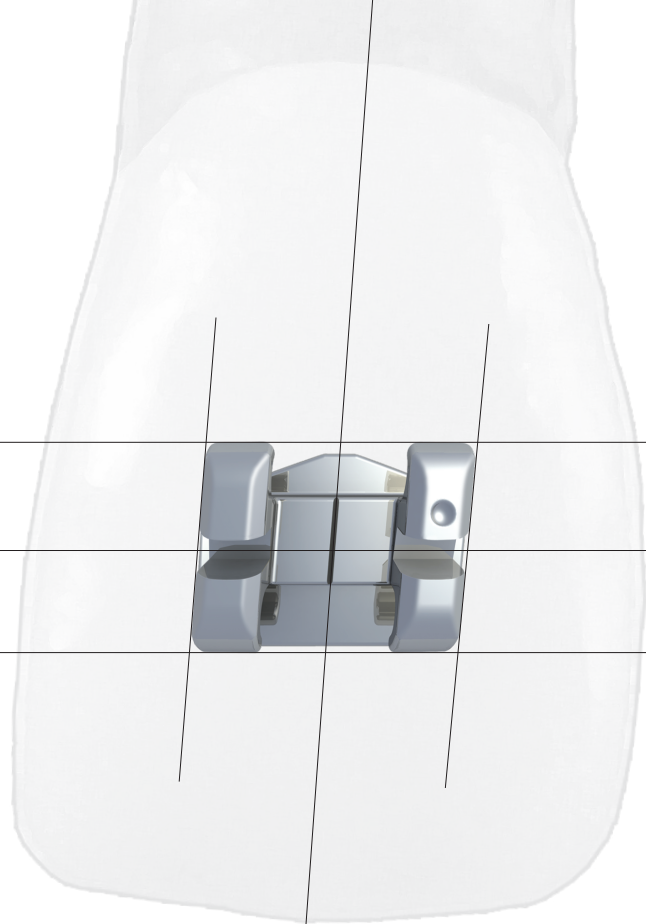
COMPETITOR Torque in Slot

Center of slot not over center
of base results in inconsistent
distribution of force



Diagonal Torque

Unique, patented Diagonal Torque technology sets Master Series apart from other twin systems. That's because torque in other systems is machined into the face or wedged in the base. Master Series' Diagonal Torque keeps the center of the slot above the center of the base. This delivers more predictable expression of torque and allows for the lowest profile possible, helping reduce occlusal interference.



Diagonal Angulation

Precise bracket positioning during bonding is easy with Master Series' patented Diagonal Angulation technology. Instead of being milled into the face of the bracket, angulation is designed into each Master Series bracket and pad. All the horizontal visual cues run parallel to the occlusal plane, while vertical visual cues, including a prominent scribe line, run parallel to the long axis of the tooth, making it simple to accurately place brackets.

I have more success bonding Master Series brackets than any other bracket I have used. The Diagonal Torque and Diagonal Angulation always places the arch slot immediately over the geometric center of the bracket. It's a subtle difference from other brackets, but the dividend is huge: it's the most accurate bracket placement possible in my practice for minimal repositioning and wire bending.

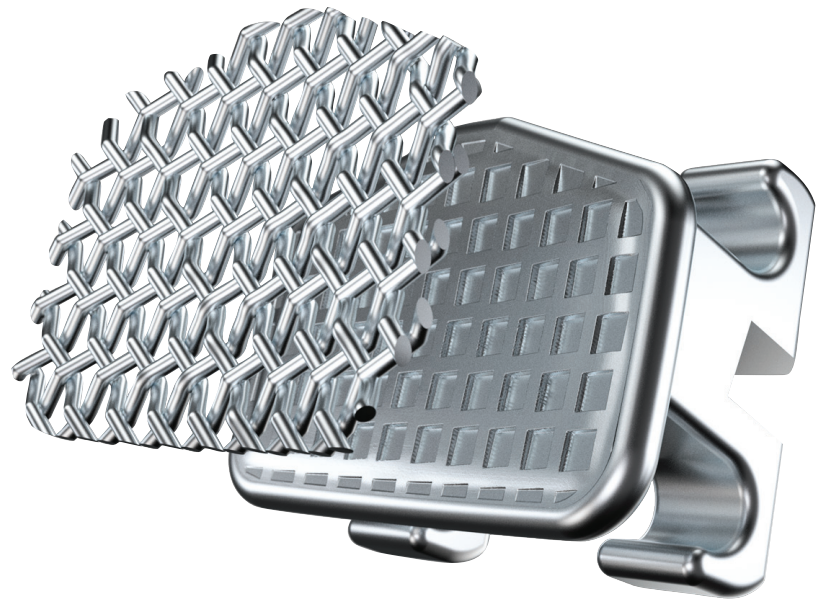
Dr. Chris Roberts – Findlay, Ohio

When I began using the Mini Master Series bracket, I was immediately drawn to the anatomy and quality of the bracket pads. Independently, my staff was also drawn to the same conclusion, saying that these were the easiest brackets they had ever bonded. Each bonding pad is like a suction cup, making it so easy to bond brackets in the correct position.

Dr. Scott Ralph - Spokane, WA

Proven bond Strength

When you place Master Series brackets on your patients' teeth, they stay on. The patented Maximum Retention™ pads provide dual mechanical retention by layering 80 gauge mesh over an etched foil base. The pad's photo-chemically etched pockets increase the pad surface area, creating a greater mechanical lock.

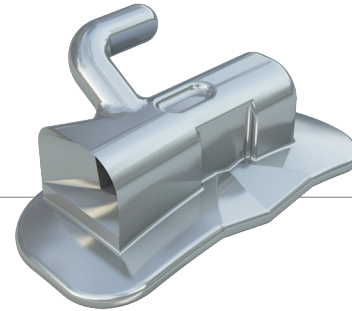


Fully Synchronized system

Master Series takes into account the importance of going beyond 5-5, and incorporates 6's and 7's into treatment.

Coordinated Molar Tubes

A seamless, coordinated system is achieved by incorporating Master Series and Low Profile buccal tubes.



Varied Profile Heights

Synchronizes in/outs throughout the entire arch resulting in less wire bending.



Raised Pad Bicuspids

Improves bicuspid-to-molar in/out discrepancies while eliminating time-consuming first-order wire bends.

Offset Bicuspid Pads

Occlusally extended bonding pads increase bond strength, making for easier bonding of partially erupted bicuspids while still maintaining straight wire mechanics.



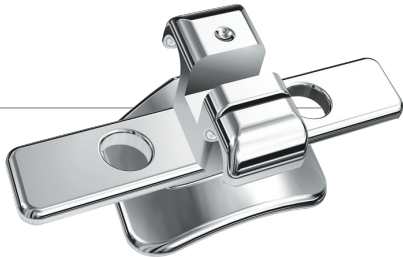
Unprecedented Choice

Master Series delivers a wide range of options when it comes to design and prescription, with the benefits of patented Diagonal Torque and Diagonal Angulation in every bracket.



Vertical Slot Versatility

Incorporating a vertical slot allows treatment that aligns with the Gianelly Bidimensional technique, and offers added convenience and versatility. Auxiliaries including power pins, uprighting springs and rotation springs give control in all three dimensional planes, as well as convenient tying of severely rotated or misaligned teeth.



Single Wing Lang Brackets

Smaller, single wing brackets allow you to align your treatment with the Alexander Discipline, providing improved rotational control on teeth with more labial curvature where twin brackets are not as efficient.



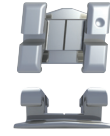
IBD Interbracket Distance Brackets

IBD (Interbracket Distance) brackets provide approximately 40% more interbracket distance than standard twin brackets, allowing your arch wire to work more efficiently and with less force. True twin design gives you all of the ligating possibilities you have with a standard twin bracket.



Forever Gold™ Cosmetic Brackets

Forever Gold stainless steel gold colored brackets offer the durability of stainless steel and the aesthetics of "white" gold. A unique proprietary ion-implementation process ensures these brackets will stay gold for the duration of treatment. When matched with gold wire and gold ligatures, Forever Gold offers a complete patient pleasing cosmetic system.



	LP LOW PROFILE	MINI MASTER SERIES	MASTER SERIES
Diagonal torque	•	•	•
Diagonal angulation	•	•	•
Maximum Retention™ bonding pads	•	•	•
Standard non-offset bicuspid pads	•	•	•
True offset bicuspid pads	•	•	•
Optional hooks available	•	•	•
Individual color coding	•	•	•
Coordinated molar tubes	•	•	•
Raised pad bicuspids	•	•	
Bicuspid pad options	•	•	
Vertical slot system	•	•	
Bidimensional vertical slot system	•	•	
Single wing Lang brackets	•	•	
Forever Gold cosmetic bracket option	•	•	
Forever Gold 24K cosmetic bracket option		•	
Asian specific prescription - SEBA		•	
Latin Hispanic specific prescription - ProTorque		•	
IBD (Interbracket Distance) system			•

Techniques

MAXILLARY

	Central		Lateral		Cuspid			1st Bicuspid			2nd Bicuspid			1st Molar			2nd Molar		
	Torq.	Ang.	Torq.	Ang.	Torq.	Ang.	Rot.	Torq.	Ang.	Rot.	Torq.	Ang.	Rot.	Torq.	Ang.	Rot.	Torq.	Ang.	Rot.
McLaughlin, Bennett, Trevisi	+17	+4	+10	+8	-7/0	+8	0	-7	0	0	-7	0	0	-14	0	10	-14	0	7
Roth	+12	+5	+8	+9	-2	+10	4	-7	0	2	-7	0	2	-10	0	14	-10	0	7
Straight Wire	+12	+5	+8	+9	-7	+10	0	-7	0	0	-7	0	0	-10	0	8	-10	0	7
Modified Straight Wire	+15	+5	+8	+9	-3	+10	0	-7	0	0	-8	+4	0	-10	0	15	-10	0	5
Alexander LTS	+15	+5	+9	+9	-3	+10	0	-6	0	0	-8	+4	0	-10	0	13	-10	0	10
Bio-Progressive	+22	+5	+14	+8	+7	+7	0	-7	0	0	-7	0	0	-10	0	15	-10	0	8
McLaughlin, Bennett, Trevisi V-Slot	+17	+4	+10	+8	0/-7	+8	0	-7	0	0	-7	0	0	-14	0	10	-14	0	7
Gianelly Bidimensional V-Slot	+12	+5	+8	+9	0	+7	0	0	0	0	0	0	0	0	0	14	0	0	5
V-Slot	+14	+5	+8	+9	-2	+10	0	-7	0	0	-7	0	0	-10	0	14	-10	0	10
Butterfly Low Profile V-Slot	+14	+5	+8	+9	0	+9	0	-7	0	0	-8	-3	0	-14	-6	8	-14	0	7
IBD	+12	+5	+8	+9	-7	+10	0	-7	0	0	-7	0	0	-10	0	8	-10	0	7
Micro Bonds	+12	+5	+9	+8	-2	+12	0	-10	0	0	-10	0	0	-10	0	0	-10	0	0
SEBA Asian	+24	+3	+18	+6	+8	+9	5	-6	0	0	-6	0	0						
ProTorque Latin Hispanic	+24	+3	+18	+6	+8	+9	5	-6	0	0	-6	0	0						

MANDIBULAR

	Central		Lateral		Cuspid			1st Bicuspid			2nd Bicuspid			1st Molar			2nd Molar		
	Torq.	Ang.	Torq.	Ang.	Torq.	Ang.	Rot.	Torq.	Ang.	Rot.	Torq.	Ang.	Rot.	Torq.	Ang.	Rot.	Torq.	Ang.	Rot.
McLaughlin, Bennett, Trevisi	-6	0	-6	0	-6/0	+3	0	-12	+2	0	-17	+2	0	-20	+2 ^{OPT.}	0	-10	+2 ^{OPT.}	0
Roth	0	0	0	0	-11	+7	2	-17	0	4	-22	0	4	-25	0	8	-30	0	7
Straight Wire	0	0	0	0	-11	+7	0	-17	0	0	-22	0	0	-25	0	0	-30	0	0
Modified Straight Wire	-5	+2	-5	+4	-6	+6	0	-7	+3	0	-9	+3	0	-10	0	0	-10	0	7
Alexander LTS	-5	+2	-5	+6	-7	+6	0	-7	0	0	-9	0	0	-10	-6 ^{OPT.}	8	0	0	5
Bio-Progressive	0	0	0	0	+7	+5	0	-11	0	0	-17/-22	0	0	-25	-5 ^{OPT.}	8	-30	-5 ^{OPT.}	7
McLaughlin, Bennett, Trevisi V-Slot	-6	0	-6	0	0/-7	+3	0	-12	+2	0	-17	+2	0	-20	+2 ^{OPT.}	0	-10	+2 ^{OPT.}	0
Gianelly Bidimensional V-Slot	0	0	0	0	0	+5	0	0	0	0	0	0	0	0	0	0	0	0	0
V-Slot	0	0	0	0	-7	+7	0	-11	0	0	-17	0	0	-25	-6 ^{OPT.}	8	-25	0	7
Butterfly Low Profile V-Slot	-5	+2	-5	+5	-3	+6	3	-7	0	0	-9	-3	0	-10/0	-6	6	-10/0	0	7
IBD	0	0	0	0	-11	+7	0	-17	0	0	-22	0	0	-25	0	0	-30	0	0
Micro Bonds	0	0	0	0	-11	+8	0	-15	0	0	-15	0	0	-25	0	0	-30	0	0
SEBA Asian	+3	0	+3	0	-5	+5	5	-12	+2	0	-17	+2	0						
ProTorque Latin Hispanic	+3	0	+3	0	-5	+5	5	-12	+2	0	-17	+2	0						



My staff and I are very satisfied with Master Series brackets. They are low profile, easy to tie, and offer comfortable hooks for elastics. On top of all that, and most importantly, Master Series brackets are aesthetically pleasing for our patients.

Dr. Diane Milberg – San Diego, CA

The American Orthodontics versions of the McLaughlin, Bennett, Trevisi System and the Roth System are not claimed to be a duplication of any other, nor does American Orthodontics imply that these systems are endorsed in any way by Drs. McLaughlin, Bennett, Trevisi, or Roth.

Dr. Wick Alexander is proud to endorse Alexander prescription brackets from American Orthodontics.

Images do not represent actual person featured in testimonial.



3524 Washington Avenue
Sheboygan, Wisconsin, 53081 USA

Phone: 1 920 457 5051
Toll Free: 1 800 558 7687
Email: info@americanortho.com
Web: americanortho.com

©2013 American Orthodontics Corporation

FOLLOW US ON



Proudly made in the USA