



MINI MASTER[®]
B R A C K E T S





TIME TESTED TREATMENT

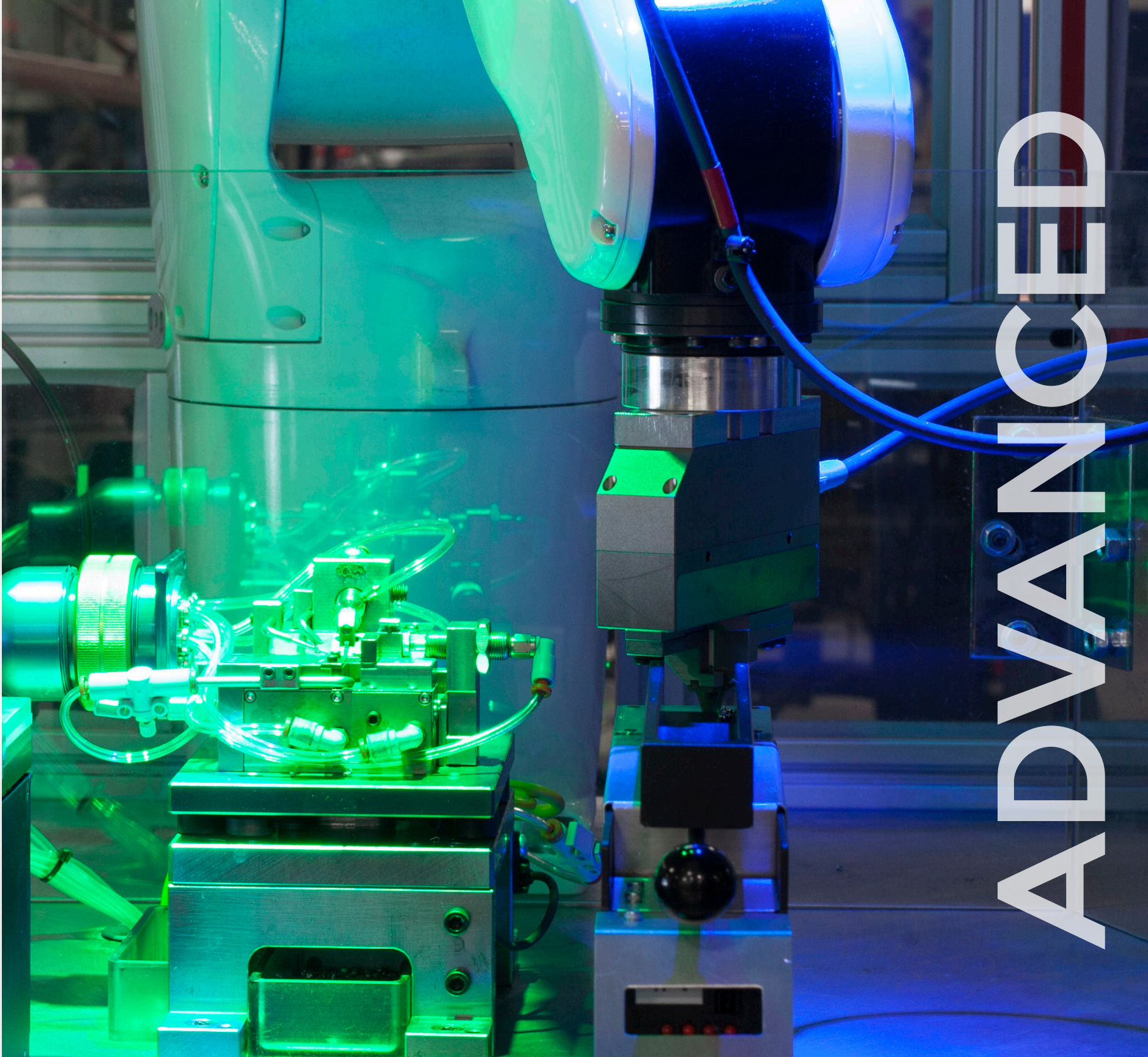
American Orthodontics' Mini Master Series metal twin brackets bring you the quality and treatment reliability you demand. For more than 30 years, orthodontists around the world have trusted the quality of Mini Master Series brackets to deliver technologically advanced treatment, earning it a position as one of the best selling brackets in the industry. Mini Master's visually intuitive design and bonding precision brings you a bracket you can count on for exceptional results.



PRECISION

TECHNOLOGICALLY ADVANCED

Mini Master Series is precision crafted at American Orthodontics' state-of-the-art facility in Sheboygan, Wisconsin. Advanced manufacturing offers tight tolerances in slot and bracket dimensions, and each bracket is heat treated for superior hardness. A final tumbling process and rigorous inspections ensure the utmost in patient comfort and design consistency. The quality manufacturing processes used to craft Mini Master Series far exceed standards of generic offerings. AO's dedication to continuous improvement ensures we are constantly enhancing our technologies to keep the highest quality products in your hands.



ADVANCED

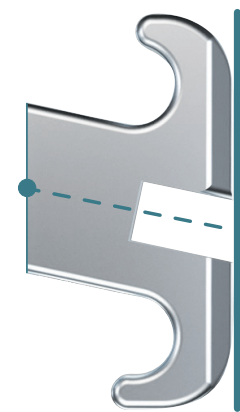


REVOLUTIONARY CONCEPTS. EXTRAORDINARY RESULTS.

American Orthodontics pioneered the groundbreaking concept of Diagonal Torque and combined it with Diagonal Angulation more than 30 years ago. Today, this unique patented technology continues to set Mini Master Series apart from other metal twin brackets. By facilitating better bracket placement, your desired treatment results can be achieved with fewer bracket repositions or wire bends.

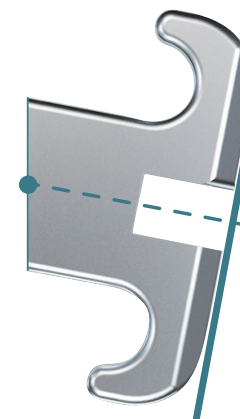
DIAGONAL TORQUE

Mini Master Series' patented Diagonal Torque keeps the center of the slot above the center of the base, unlike other systems that use torque machined into the face or wedged into the base. This unique technology delivers more predictable expression of torque and allows for the lowest profile possible, helping reduce occlusal interference.



AMERICAN ORTHODONTICS DIAGONAL TORQUE

Center of slot over center of base with low profile.



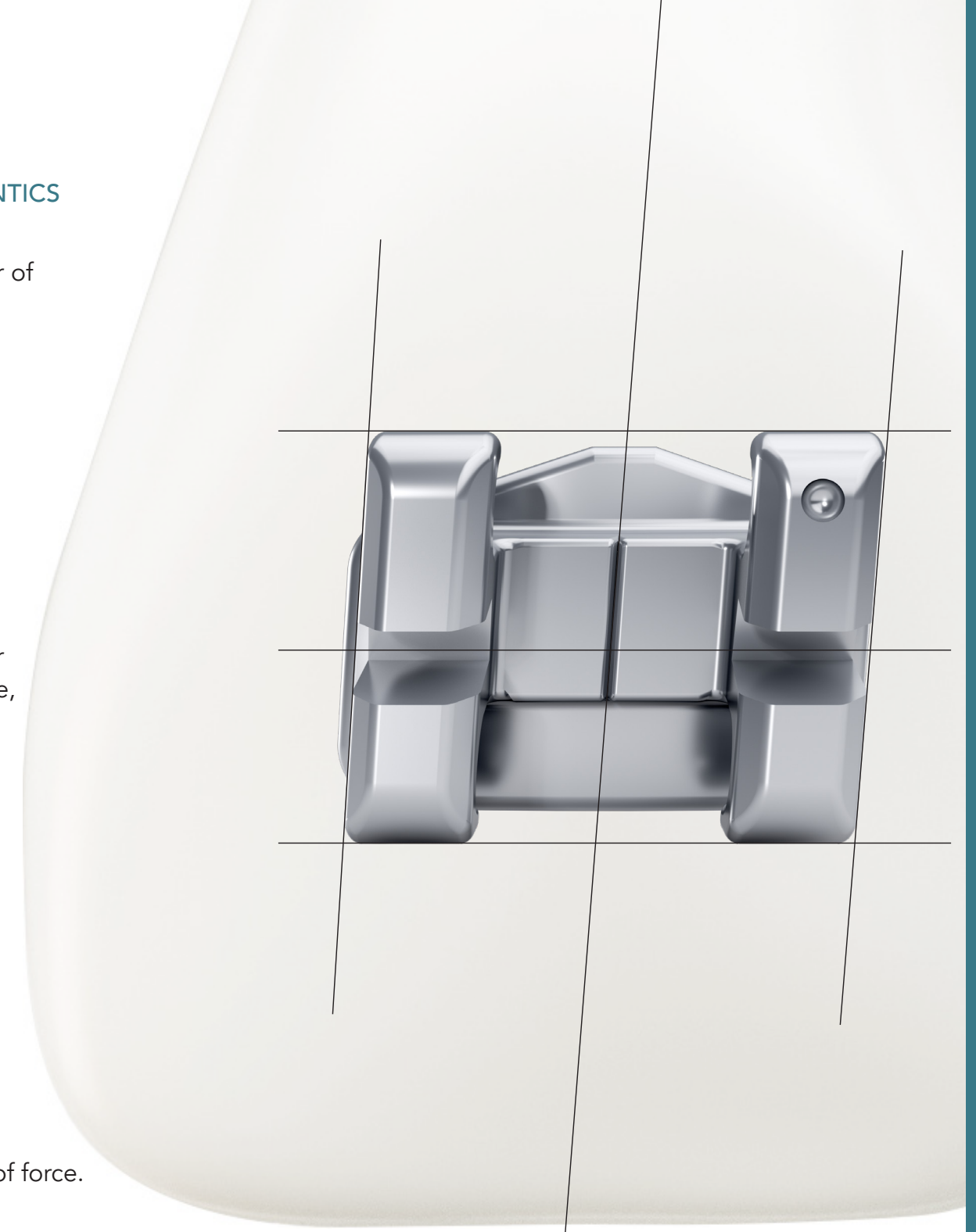
COMPETITOR TORQUE IN BASE

Center of slot over center of base, but higher profile, increasing the chance of occlusal interference.



COMPETITOR TORQUE IN SLOT

Center of slot not over center of base results in inconsistent distribution of force.



DIAGONAL ANGULATION

Precise bracket positioning during bonding is easy with Mini Master Series' patented Diagonal Angulation technology. Instead of being milled into the face of the bracket, angulation is designed into each bracket and pad. All the horizontal visual cues run parallel to the occlusal plane, while vertical visual cues, including a prominent scribe line, run parallel to the long axis of the tooth, making it simple to accurately place brackets.

3shape

3SHAPE INTEGRATION*

Mini Master Series is part of AO's extensive, comprehensive library in 3Shape's platform, allowing treatment planning with a virtual bracket system, and easy indirect bonding with digitally designed transfer trays. Combined with Diagonal Torque and Diagonal Angulation, this helps improve bonding accuracy even more, and helps avoid repositioning brackets in later treatment stages.

*Mini Master Series MBT and Roth compatible prescriptions available in 3Shape Library

MINI MASTER BRACKETS

STAINLESS STEEL BRACKET BODY
17-4 medical grade stainless steel for bio-compatibility and increased strength.

PROMINENT VISUAL CUES
Increased bonding accuracy with visual cues including a prominent scribe line.

PROVEN TIE WING DESIGN
Ample tie wing under cuts for multiple tying configuration options and best in class tie-ability.*

SLOT PRECISION
Milled slot helps optimize tooth movement while minimizing wire bending during treatment.

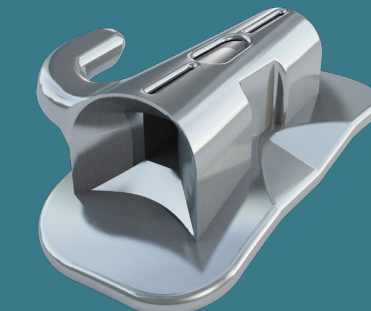
LOW PROFILE, CONTOURED DESIGN
Enhances patient comfort and reduces occlusal interference.

EASY BRACKET IDENTIFICATION
Color coding makes for easy bracket identification during bonding.

*A recent internal AO blind tie-ability test study rated Mini Master Series as a top performer against other competitive metal twin brackets



FULLY SYNCHRONIZED SYSTEM
Mini Master Series offers complete 7-7 synchronization.



**LOWER ANTERIOR
BEVELED OCCLUSAL EDGE**

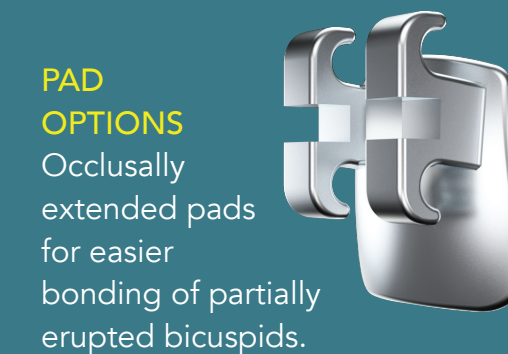
Helps avoid occlusal interference in severe deep bite cases.

COORDINATED MOLAR TUBES
Seamless system incorporates AO's high quality ifit® and LP™ buccal tubes.



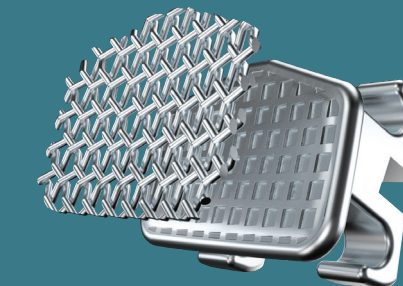
**VARIED
PROFILE HEIGHTS**
Less wire bending thanks to synchronized in/outs throughout entire arch.

**HIGH GINGIVAL WING
BICUSPID OPTIONS**
Helps reduce gingival inflammation, while still allowing access to the tie wings.



**PAD
OPTIONS**

Occlusally extended pads for easier bonding of partially erupted bicuspids.



BONDING STRENGTH

Maximum Retention™ pads utilize dual mechanical retention by layering 80 gauge mesh over an etched foil base. Photochemically etched pockets increase pad surface area for greater mechanical lock.



Diagonal Torque

Diagonal Angulation

Maximum Retention™ bonding pads

Bicuspid pad options

Hook options available

Coordinated molar tubes

Vertical slot system option

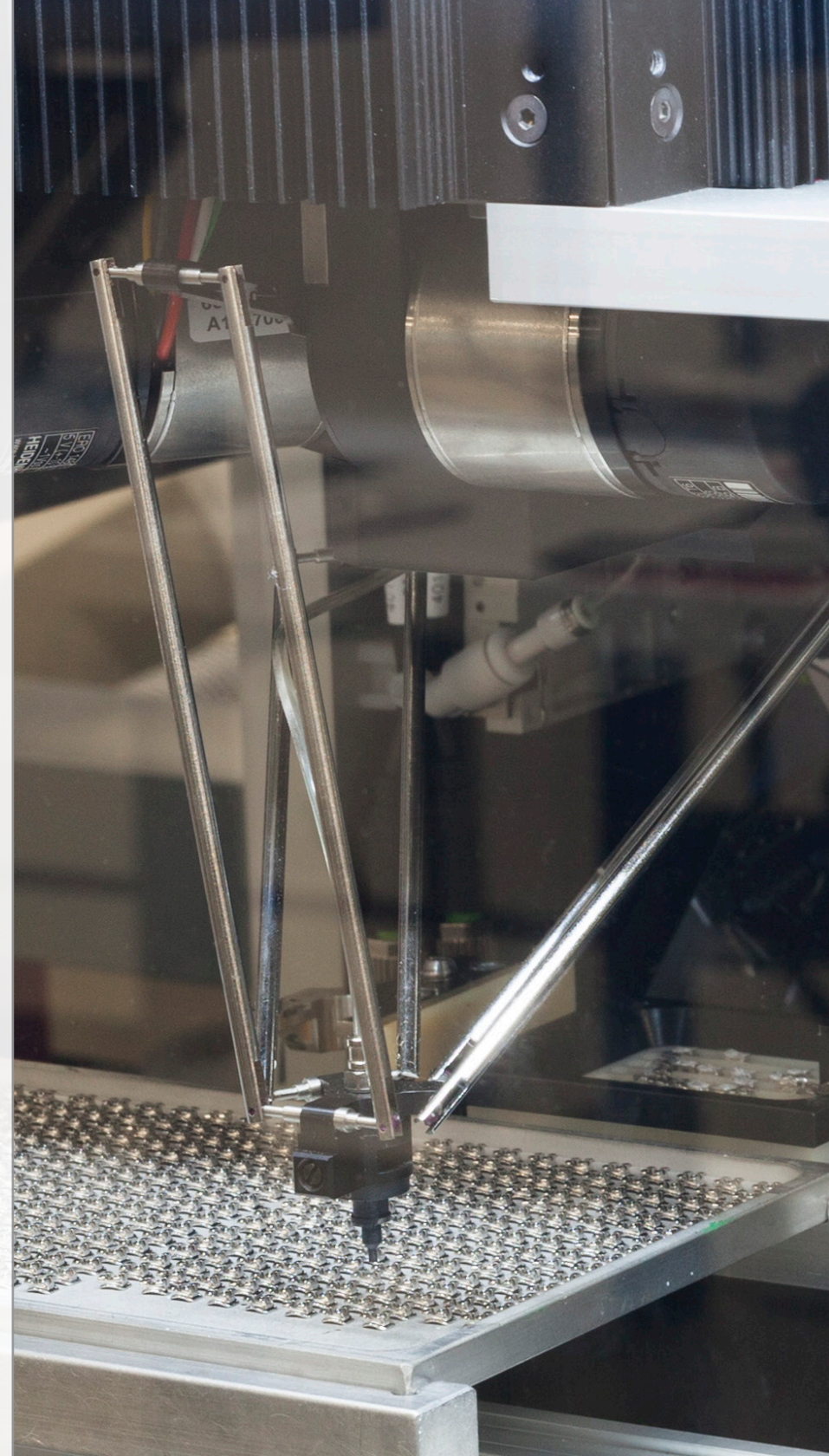
High gingival wing bicuspid option

Single wing Lang brackets

Forever Gold cosmetic bracket option

Asian specific prescription - SEBA

Latin Hispanic specific prescription - ProTorque



TECHNIQUES

MAXILLARY

	Central		Lateral		Cuspid			1st Bicuspid			2nd Bicuspid			1st Molar			2nd Molar		
	Torq.	Ang.	Torq.	Ang.	Torq.	Ang.	Rot.	Torq.	Ang.	Rot.	Torq.	Ang.	Rot.	Torq.	Ang.	Rot.	Torq.	Ang.	Rot.
McLaughlin, Bennett, Trevisi	+17	+4	+10	+8	-7/0	+8	0	-7	0	0	-7	0	0	-14	0	10	-14	0	7
Roth Compatible System	+12	+5	+8	+9	-2	+10	4	-7	0	2	-7	0	2	-10	0	14	-10	0	7
Straight Wire	+12	+5	+8	+9	-7	+10	0	-7	0	0	-7	0	0	-10	0	8	-10	0	7
Modified Straight Wire	+15	+5	+8	+9	-3	+10	0	-7	0	0	-8	+4	0	-10	0	15	-10	0	5
Alexander LTS	+15	+5	+9	+9	-3	+10	0	-6	0	0	-8	+4	0	-10	0	13	-10	0	10
Bio-Progressive	+22	+5	+14	+8	+7	+7	0	-7	0	0	-7	0	0	-10	0	15	-10	0	8
McLaughlin, Bennett, Trevisi V-Slot	+17	+4	+10	+8	0/-7	+8	0	-7	0	0	-7	0	0	-14	0	10	-14	0	7
Gianelly Bidimensional V-Slot	+12	+5	+8	+9	0	+7	0	0	0	0	0	0	0	0	0	14	0	0	5
V-Slot	+14	+5	+8	+9	-2	+10	0	-7	0	0	-7	0	0	-10	0	14	-10	0	10
SEBA Asian	+24	+3	+18	+6	+8	+9	5	-6	0	0	-6	0	0						
ProTorque Latin Hispanic	+24	+3	+18	+6	+8	+9	5	-6	0	0	-6	0	0						

MANDIBULAR

	Central		Lateral		Cuspid			1st Bicuspid			2nd Bicuspid			1st Molar			2nd Molar		
	Torq.	Ang.	Torq.	Ang.	Torq.	Ang.	Rot.	Torq.	Ang.	Rot.	Torq.	Ang.	Rot.	Torq.	Ang.	Rot.	Torq.	Ang.	Rot.
McLaughlin, Bennett, Trevisi	-6	0	-6	0	-6/0	+3	0	-12	+2	0	-17	+2	0	-20	+2 ^{OPT.}	0	-10	+2 ^{OPT.}	0
Roth Compatible System	0	0	0	0	-11	+7	2	-17	0	4	-22	0	4	-25	0	8	-30	0	7
Straight Wire	0	0	0	0	-11	+7	0	-17	0	0	-22	0	0	-25	0	0	-30	0	0
Modified Straight Wire	-5	+2	-5	+4	-6	+6	0	-7	+3	0	-9	+3	0	-10	0	0	-10	0	7
Alexander LTS	-5	+2	-5	+6	-7	+6	0	-7	0	0	-9	0	0	-10	-6 ^{OPT.}	8	0	0	5
Bio-Progressive	0	0	0	0	+7	+5	0	-11	0	0	-17/-22	0	0	-25	-5 ^{OPT.}	8	-30	-5 ^{OPT.}	7
McLaughlin, Bennett, Trevisi V-Slot	-6	0	-6	0	0/-7	+3	0	-12	+2	0	-17	+2	0	-20	+2 ^{OPT.}	0	-10	+2 ^{OPT.}	0
Gianelly Bidimensional V-Slot	0	0	0	0	0	+5	0	0	0	0	0	0	0	0	0	0	0	0	0
V-Slot	0	0	0	0	-7	+7	0	-11	0	0	-17	0	0	-25	-6 ^{OPT.}	8	-25	0	7
SEBA Asian	+3	0	+3	0	-5	+5	5	-12	+2	0	-17	+2	0						
ProTorque Latin Hispanic	+3	0	+3	0	-5	+5	5	-12	+2	0	-17	+2	0						



3524 Washington Avenue
Sheboygan, Wisconsin, 53081 USA

Phone: +1 920 457 5051

Email: cs@americanortho.com

Web: americanortho.com



©2020 American Orthodontics Corporation
All Rights Reserved

FOLLOW US ON



* The American Orthodontics versions of the Roth and McLaughlin, Bennett, Trevisi Systems do not claim to be a duplication of any other, nor does American Orthodontics imply that they are endorsed in any way by Drs. Roth, McLaughlin, Bennett, or Trevisi.