

PRESENTED BY
FLORIDA
REAL ESTATE
TEAM

2014-2015
DYNAMIC DISCS
2/11-2/15



TABLE OF CONTENTS

Schedule of Events	3
Pools - A, B, C, and D	4
Pools - E and F	5
Azalea Park - Map	6
Azalea Park - Previous Averages and Out of Bounds Rules	7
Cliff Stephens - Map	8
Cliff Stephens - Previous Averages	9
Cliff Stephens - Out of Bounds Rules	10
Cypress Point Park - Map	11
Cypress Point Park - Previous Averages	12
Cypress Point Park - Out of Bounds Rules	13
Maximo Park - Map	14
Maximo Park - Previous Averages	15
Maximo Park - Out of Bounds Rules	16
Picnic Island Park - Map	17
Picnic Island Park - Previous Averages	18
Picnic Island Park - Out of Bounds Rules	19
NE Coachman Park - Map	20
NE Coachman Park - Previous Averages	21
NE Coachman Park - Out of Bounds Rules	22
Taylor Park - Map	23
Taylor Park - Previous Averages	24
Taylor Park - Out of Bounds Rules	25
Previous Winners	26
Sponsors	27

SCHEDULE OF EVENTS

Friday, February 13th

7:00am - 2:00pm

Early Check - In @ Maximo Park

7:30am - 12:30pm

Tee Time Toss C - Tier @ Maximo Park

Saturday, February 14th

7:30am - 8:15am

Day of Check In @ All Courses

8:30am

1st Round Tee Time @ All Courses

1.5 Hours After
Last Card

2nd Round Tee Time @ All Courses

6:30pm - 9:30pm

**Player Party and Mini Fly Mart @ Pee - Paws Garage
Pinellas Park**

Sunday, February 15th

9:00am

3rd Round Tee Time @ All Courses

Monday, February 16th

8:00pm

Raffle drawing live on Youtube!

**GULF
COAST** EVENT
PROMOTIONS

PAD & POOL ASSIGNMENTS

A POOL		ROUND 1	ROUND 2	ROUND 3
DIVISION		CYPRESS	PICNIC	CLIFF
MPO	Mixed Pro Open	LONG	LONG	LONG
MP40+	Mixed Pro 40+	LONG	LONG	LONG
MP50+	Mixed Pro 50+	LONG	LONG	LONG
MP60+	Mixed Pro 60+	SHORT	SHORT	SHORT
MP70+	Mixed Pro 70+	SHORT	SHORT	SHORT
MA40+	Mixed Amateur 40+	LONG	LONG	LONG

B POOL		ROUND 1	ROUND 2	ROUND 3
DIVISION		PICNIC	CYPRESS	TAYLOR
MA1	Mixed Amateur 1	LONG	LONG	LONG
MA50	Mixed Amateur 50+	SHORT	SHORT	LONG

C POOL		ROUND 1	ROUND 2	ROUND 3
DIVISION		TAYLOR	MAXIMO	CYPRESS
MA2	Mixed Amateur 2	LONG	LONG	SHORT
MA55	Mixed Amateur 55+	LONG	LONG	SHORT
MA65	Mixed Amateur 65+	SHORT	SHORT	SHORT

D POOL		ROUND 1	ROUND 2	ROUND 3
DIVISION		CLIFF	TAYLOR	MAXIMO
MA3	Mixed Amateur 3	SHORT	SHORT	SHORT
MA70	Mixed Amateur 70+	SHORT	SHORT	SHORT
MA60	Mixed Amateur 60+	SHORT	SHORT	SHORT

PAD & POOL ASSIGNMENTS

E POOL		ROUND 1	ROUND 2	ROUND 3
DIVISION		MAXIMO	CLIFF	PICNIC
FPO	Women's Pro Open	LADIES	LADIES	LADIES
FP40	Women's Pro 40+	LADIES	LADIES	LADIES
FP50	Women's Pro 50+	LADIES	LADIES	LADIES
FP60	Women's Pro 60+	LADIES	LADIES	LADIES
FP70	Women's Pro 70+	LADIES	LADIES	LADIES
FA1	Women's Amateur 1	LADIES	LADIES	LADIES
FA2	Women's Amateur 2	LADIES	LADIES	LADIES
FA3	Women's Amateur 3	LADIES	LADIES	LADIES
FA40	Women's Amateur 40+	LADIES	LADIES	LADIES
FA50	Women's Amateur 50+	LADIES	LADIES	LADIES
FA55	Women's Amateur 55+	LADIES	LADIES	LADIES
FA60	Women's Amateur 60+	LADIES	LADIES	LADIES

F POOL		ROUND 1	ROUND 2	ROUND 3
DIVISION		COACHMAN	COACHMAN	AZALEA
MA4	Mixed Amateur 4	SHORT	SHORT	LONG
FA4	Women's Amateur 4	SHORT	SHORT	LONG
MJ18	Mixed Junior ≤18	SHORT	SHORT	LONG
FJ18	Girls' Junior ≤18	SHORT	SHORT	LONG
MJ15	Mixed Junior ≤15	SHORT	SHORT	LONG
FJ15	Girls' Junior ≤15	SHORT	SHORT	LONG
MJ12	Mixed Junior ≤12	SHORT	SHORT	LONG
FJ12	Girls' Junior ≤12	SHORT	SHORT	LONG
FA70	Women's Amateur 70+	SHORT	SHORT	LONG
FA75	Women's Amateur 75+	SHORT	SHORT	LONG
FA80	Women's Amateur 80+	SHORT	SHORT	LONG
MA75	Mixed Amateur 75+	SHORT	SHORT	LONG
MA80	Mixed Amateur 80+	SHORT	SHORT	LONG

AZALEA PARK



Basket

Parking

Long Pad

Short Pad

Restroom

Mandatory

Water Station

Tournament Central



GULF COAST CHARITY OPEN

AZALEA PARK

#	PIN	PAR	LADIES	SHORT	LONG	AVERAGES		
						LADIES	SHORT	LONG
1	B	3	-	-	240	-	-	3.49
2	B	3	-	-	285	-	-	3.52
3	B	3	-	-	250	-	-	3.26
4	B	3	-	-	345	-	-	3.78
5	B	3	-	-	235	-	-	2.98
6	B	3	-	-	260	-	-	3.71
7	B	3	-	-	280	-	-	3.86
8	A	3	-	-	200	-	-	3.15
9	B	3	-	-	290	-	-	3.52
Total		27	-	-	2385	-	-	31.26

OUT OF BOUNDS

1	On/beyond any sidewalk or in/beyond parking lot is OB.
2	On/beyond any sidewalk is OB.
3	On/beyond any sidewalk is OB.
4	On/beyond any sidewalk is OB.
5	On/beyond any sidewalk is OB.
6	On/beyond sidewalks or inside fenced areas (tennis/handball court) is OB.
7	On/beyond sidewalks or inside fenced areas (tennis/handball court) is OB.
8	On/beyond any sidewalk is OB.
9	On/beyond any sidewalk or in/beyond parking lot is OB.

CLIFF STEPHENS PARK



GULF COAST CHARITY OPEN



15

Basket



Parking



Long Pad



Short Pad



Restroom



Mandatory



Water Station



Tournament Central

CLIFF STEPHENS PARK

						AVERAGES		
#	PIN	PAR	LADIES	SHORT	LONG	LADIES	SHORT	LONG
1	A	3	264	264	426	3.22	3.09	3.24
2	B	3	312	312	312	3.45	3.22	2.86
3	A	3	114	114	279	2.73	2.43	2.90
4	A	3	279	279	279	3.87	3.38	3.00
5	B	3	252	252	360	3.40	2.96	3.02
6	B	3	264	264	354	3.32	3.00	2.92
7	B	3	303	303	303	3.80	3.30	3.00
8	A	3	222	222	297	2.82	2.53	2.57
9	A	3	279	195	279	3.10	2.57	2.60
10	A	3	321	321	339	3.86	3.21	2.94
11	A	3	234	234	279	3.17	2.88	2.95
12	A	3	192	192	345	2.95	2.81	3.13
13	A	3	204	204	276	3.05	2.87	2.98
14	A	3	217	217	321	2.98	2.84	3.02
15	A	3	306	306	306	3.63	3.30	3.21
16	A	4	413	413	450	4.48	4.13	3.95
17	A	3	384	384	384	4.17	3.86	3.40
18	A	4	471	471	669	4.67	3.95	4.37
Total		56	5031	4947	6258	62.67	56.33	56.06

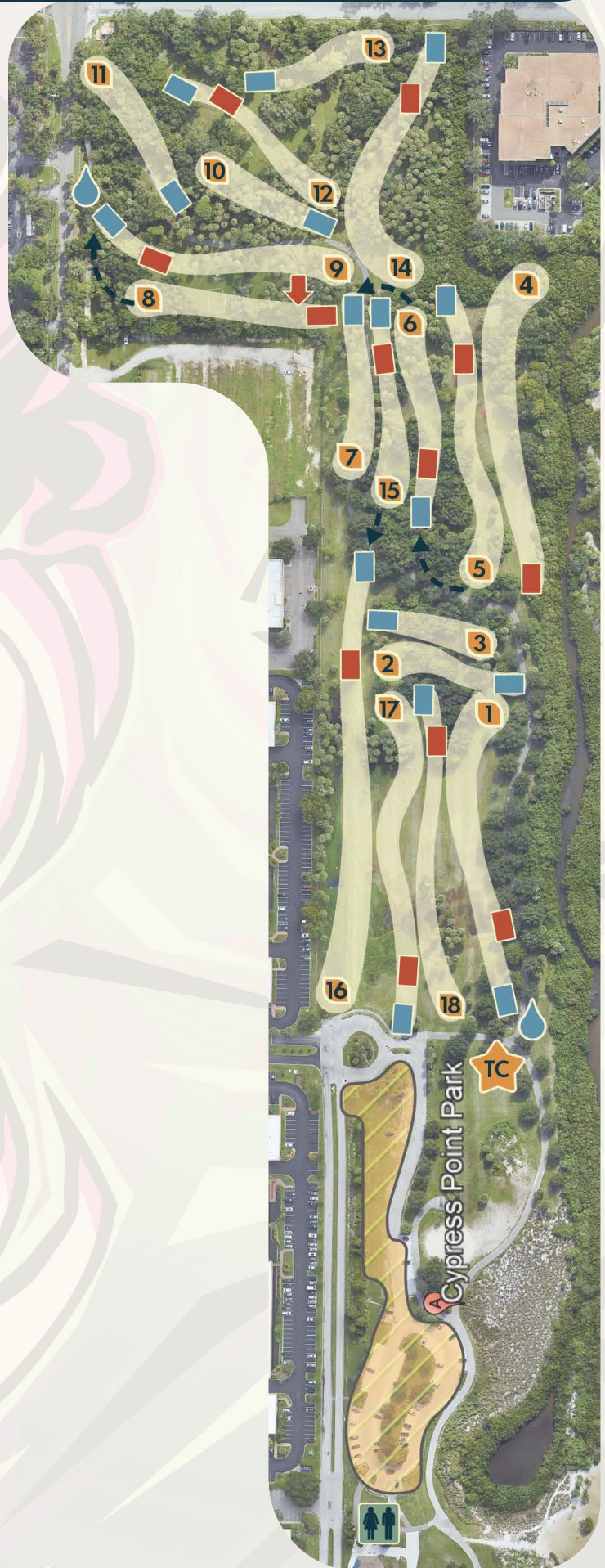
CLIFF STEPHENS PARK

OUT OF BOUNDS

1	In/beyond any water or past the closest rail of the railroad is OB.
2	In/beyond any water or in/beyond parking lot is OB.
3	In/beyond any water is OB.
4	Mando - If missed, retee with a 1 stroke penalty. In/beyond water or on/beyond/under path, bridge and concrete surrounding picnic table is OB.
5	In/beyond any water is OB.
6	In/beyond any water is OB.
7	Mando - If missed, retee with a 1 stroke penalty. In/beyond any water is OB.
8	In/beyond any water is OB.
9	In/beyond any water or in/beyond parking lot is OB. Parking lot is differentiated from other concrete with a painted line.
10	In water, over closest rail of railroad, inside painted area denoting the green fence/building is OB.
11	On or beyond path/bridge/painted line is OB and standard OB rules apply. In/beyond water on left is OB. Any water in ditch in front of basket is casual.
12	In/beyond any water is OB.
13	In/beyond any water or on/beyond road/gutter on right is OB.
14	On or beyond path/bridge/painted line is OB. In/beyond any water or on/beyond road/gutter on left is OB.
15	In/beyond any water is OB.
16	PDGA WAIVER APPROVED: Long Pad: Any teeshot not crossing the painted line as determined by the spotter and/or confirmed by your group will proceed directly to the short pad with a 1 stroke penalty. Standard OB rules apply after initial teeshot. Inside painted line and the island are OB. The island is designated by a painted line near the concrete tunnel at the back of the island. Short Pad: Standard OB rules apply.
17	In/beyond any water or past the closest rail of the railroad is OB.
18	Mando - If missed from long pad, proceed to short pad with a 1 stroke penalty. If missed from short pad, retee with a 1 stroke penalty. In any water, inside painted area denoting the green fence/building, on/beyond road/gutter, or past the closest rail of the railroad is OB.

CYPRESS POINT PARK

	Basket
	Parking
	Long Pad
	Short Pad
	Restroom
	Mandatory
	Water Station
	Tournament Central



CYPRESS POINT PARK

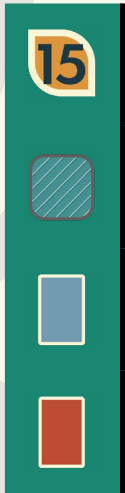
						AVERAGES		
#	PIN	PAR	LADIES	SHORT	LONG	LADIES	SHORT	LONG
1	A	4	455	455	570	4.56	3.80	3.75
2	A	3	239	239	239	3.13	2.88	2.74
3	A	3	198	198	198	2.95	2.78	2.70
4	B	4	575	575	575	5.33	4.36	3.92
5	B	4	410	410	470	4.33	3.76	3.67
6	A	3	332	263	332	4.10	2.99	3.04
7	A	3	258	258	258	3.95	3.14	2.98
8	A	4	386	386	386	4.23	3.66	3.40
9	A	4	415	415	475	3.87	3.82	3.87
10	B	3	218	218	218	3.41	2.94	2.84
11	A	3	225	225	225	3.46	2.80	2.67
12	A	3	335	335	377	3.77	3.36	3.18
13	A	3	263	263	263	3.31	2.97	2.81
14	A	4	422	422	490	4.36	3.64	3.79
15	A	3	271	271	313	3.85	3.19	3.31
16	A	5	725	725	825	5.36	4.75	4.75
17	A	4	518	518	580	4.49	3.78	3.80
18	A	4	510	510	565	4.49	3.69	3.48
Total		64	6755	6686	7359	72.95	62.31	60.70

CYPRESS POINT PARK

OUT OF BOUNDS

1	On/beyond any walking path is OB.
2	On/beyond any walking path is OB.
3	On/beyond any walking path is OB.
4	ALL DIVISIONS PLAY FROM SHORT PAD - On/beyond any walking path or in any water is OB.
5	On/beyond any walking path or in any water is OB.
6	LADIES PLAY FROM LONG TEE - On/beyond any walking path or in any water is OB.
7	On/beyond any walking path or over any fence is OB.
8	ALL DIVISIONS PLAY FROM SHORT PAD Mando - If missed retee with a 1 stroke penalty. On/beyond any walking path or over any fence is OB.
9	On/beyond any walking path or over any fence is OB.
10	On/beyond any walking path is OB.
11	On/beyond any walking path is OB.
12	On/beyond any walking path is OB.
13	On/beyond any walking path is OB.
14	On/beyond any walking path is OB. Any shot landing in or beyond relief area (marked by paint and whiskers) will be granted 1 meter relief from the point where they entered the relief area with NO PENALTY. Players may not play from within the relief area.
15	On/beyond any walking path or over any fence/string/paint line is OB.
16	On/beyond any walking path or over any fence/string/paint line is OB.
17	On/beyond any walking path or over any fence/string/paint line is OB.
18	On/beyond any walking path or over any fence/string/paint line is OB.

MAXIMO PARK



Basket

Parking

Long Pad

Short Pad



Restroom

Mandatory

Water Station

Tournament Central

MAXIMO PARK

						AVERAGES		
#	PIN	PAR	LADIES	SHORT	LONG	LADIES	SHORT	LONG
1	A	3	271	175	271	3.68	2.70	3.21
2	A	3	192	192	233	2.93	2.76	2.81
3	A	3	194	194	194	-	-	-
4	A	3	141	141	141	-	-	-
5	A	3	241	241	328	3.67	3.75	3.74
6	A	3	206	206	250	3.07	2.93	2.75
7	A	3	175	175	217	3.08	2.90	2.81
8	A	3	234	234	321	3.23	2.93	3.22
9	A	3	313	313	313	3.38	3.09	2.97
10	A	3	250	250	314	3.55	3.28	3.44
11	A	3	349	349	414	-	-	-
12	A	3	181	181	267	3.27	3.00	3.21
13	A	3	203	203	290	2.90	3.00	3.35
14	A	3	283	283	348	-	-	-
15	A	3	238	238	271	-	-	-
16	A	3	242	242	352	3.12	3.01	3.22
17	A	3	176	176	239	2.98	2.91	3.22
18	B	3	122	122	168	-	-	-
Total		54	4011	3915	4931	56.86	54.26	55.95

MAXIMO PARK

OUT OF BOUNDS

1	On/beyond any road is OB.
2	On/beyond any road is OB.
3	On/beyond any road is OB.
4	PDGA Waiver Approved - Any shot not coming to rest on the island as defined by the fence, rope line/paint/rocks is out of bounds and will proceed to the marked drop zone with a 1 stroke penalty. Standard OB rules apply after the teeshot (From drop zone or island)
5	Over fence/string line/paint line on right or on/beyond road long is OB.
6	On or beyond any road is OB.
7	On the elevated interstate is OB (gravel road is in bounds).
8	On the elevated interstate is OB (gravel road is in bounds).
9	On the elevated interstate is OB (gravel road is in bounds).
10	On/beyond any walking path or over any fence is OB.
11	On/beyond any walking path is OB. LONG TEE - Your drive must cross the walking path directly in front of the tee area to advance. If your drive does not cross the walking path, retee with a one stroke penalty.
12	Over any fence/string line/paint line or in any water is OB.
13	In any water is OB.
14	On/beyond any walking path is OB. LONG TEE - Mando. If missed retee with a one stroke penalty. Your drive must cross the walking path directly in front of the tee area to advance. If your drive does not cross the walking path, retee with a one stroke penalty.
15	Mando - If missed from either pad, proceed to the drop zone with a 1 stroke penalty. On/beyond any road or on/beyond any walking path is OB.
16	Mando - If missed from long pad, advanced to short pad with one stroke penalty. If missed from the short pad, retee with a 1 stroke penalty. On/beyond any road or on/beyond and walking path is OB.
17	On/beyond any road is OB.
18	Beyond string/paint line on left or inside string line area surrounding the bog is OB.

PICNIC ISLAND PARK

-  **Basket**
-  **Parking**
-  **Long Pad**
-  **Short Pad**
-  **Restroom**
-  **Mandatory**
-  **Water Station**
-  **Tournament Central**



PICNIC ISLAND PARK

						AVERAGES		
#	PIN	PAR	LADIES	SHORT	LONG	LADIES	SHORT	LONG
1	C - Blue	3	205	205	205	-	-	-
2	C - Blue	4	390	390	482	4.25	3.66	3.36
3	C - Blue	3	210	170	210	3.34	2.41	2.66
4	B - Orange	3	222	222	275	3.54	3.14	3.15
5	C - Blue	4	387	387	435	4.27	3.45	3.4
6	C - Blue	4	485	485	570	5.59	4.28	4.66
7	B - Orange	3	150	150	230	3.27	2.62	3.1
8	B - Orange	3	266	266	338	3.44	2.83	3.16
9	B - Orange	3	263	263	283	3.36	3.07	2.92
10	C - Blue	4	405	405	515	4.41	3.97	3.89
11	C - Blue	4	395	395	610	4.36	3.45	4.6
12	A - Orange	3	191	191	245	3.17	2.86	3.13
13	A - Orange	3	186	186	253	3.47	2.93	2.83
14	A - Orange	3	180	180	220	3.27	2.97	2.86
15	C - Blue	4	485	485	595	5.15	4.07	4.37
16	C - Blue	3	287	287	340	3.81	2.97	2.83
17	B - Orange	3	250	250	300	3.95	2.93	2.93
18	B - Blue	3	221	221	275	3.92	2.76	2.91
Total		60	5178	5138	6381	66.57	54.37	56.76

PICNIC ISLAND PARK

OUT OF BOUNDS

1	ALL DIVISIONS PLAY FROM SHORT PAD - Beyond string line on right/long or over painted line on left/long is OB.
2	Mando (Please only enforce GCCO Branded Mando Sign) - If mando is missed proceed to the drop zone with a one stroke penalty. In/beyond any water on left, in/beyond road long, or beyond any paint line on right is OB.
3	LADIES PLAY FROM LONG TEE - In any water or on/beyond any road is OB.
4	Any shot landing past the string/paint line designating the parking lot is OB.
5	Any shot landing on concrete (pavilion) is OB.
6	Triple Mando - If missed proceed to drop zone with one stroke penalty. On/beyond any road is OB.
7	On any concrete (bathrooms) or on/beyond any road is OB
8	On any concrete (bathrooms) or on/beyond any road is OB
9	On/beyond any road is OB.
10	On/beyond any road is OB.
11	On/beyond any road/parking lot, inside any roped/painted area (marsh) or beyond any fence is OB.
12	Over any fence is OB.
13	Over any fence is OB.
14	Over any fence is OB.
15	Over any fence is OB.
16	Any shot landing past the string/paint line that designates the parking lot or on any concrete (pavilions) is OB.
17	Over any string/paint line or on any concrete (pavilion) is OB. Standard OB rules apply.
18	Over any fence or on any concrete (pavilion) is OB.

NE COACHMAN PARK



GULF COAST CHARITY OPEN



15

Basket



Parking



Long Pad



Short Pad



Restroom



Mandatory



Water Station



Tournament Central

NE COACHMAN PARK

						AVERAGES		
#	PIN	PAR	LADIES	SHORT	LONG	LADIES	SHORT	LONG
1	A	3	-	250	-	-	-	-
2	A	3	-	282	-	-	-	-
3	A	3	-	249	-	-	-	-
4	A	3	-	226	-	-	-	-
5	A	3	-	210	-	-	-	-
6	A (Straight)	3	-	240	-	-	-	-
7	A	3	-	280	-	-	-	-
8	A	3	-	270	-	-	-	-
9	A	3	-	222	-	-	-	-
10	A	3	-	302	-	-	-	-
11	A	3	-	253	-	-	-	-
12	A	3	-	271	-	-	-	-
13	A	3	-	256	-	-	-	-
14	A	3	-	220	-	-	-	-
15	A	3	-	239	-	-	-	-
16	A (Left)	3	-	233	-	-	-	-
17	A	3	-	230	-	-	-	-
18	A	3	-	318	-	-	-	-
Total		54		4551				

NE COACHMAN PARK

OUT OF BOUNDS

1	On or beyond any path is OB
2	On or beyond any path is OB
3	In parking lot (denoted by string/paint/whiskers) is OB
4	Any water in creek is casual (No OB)
5	In or beyond water is OB
6	in or beyond water on left, on or beyond path long
7	In or beyond water is OB
8	In or beyond water is OB
9	In or beyond water is OB
10	
11	In parking lot (denoted by string/paint/whiskers) is OB
12	In or beyond water is OB
13	In parking lot (denoted by string/paint/whiskers) is OB
14	On or beyond road is OB (path is inbounds)
15	On or beyond road is OB (path is inbounds)
16	In or beyond water is OB
17	
18	In parking lot (denoted by string/paint/whiskers) is OB

TAYLOR PARK

15

Basket



Parking



Long Pad



Short Pad



Restroom



Mandatory



Water Station



Tournament Central



GULF COAST CHARITY OPEN



TAYLOR PARK

#	PIN	PAR	LADIES	SHORT	LONG	AVERAGES		
						LADIES	SHORT	LONG
1	B	3	216	216	324	3.48	3.14	3.39
2	A	3	255	255	255	3.78	3.29	2.98
3	A	3	225	225	225	3.33	3.14	2.97
4	B	3	318	318	318	3.90	3.19	2.88
5	A	3	264	264	264	3.48	3.14	2.88
6	B	3	270	270	270	3.50	2.99	2.86
7	A	3	261	261	261	3.50	3.08	2.82
8	B	3	249	249	249	3.70	3.08	3.02
9	A	3	183	183	315	2.98	2.83	3.48
10	C	4	351	351	471	4.18	3.93	3.78
11	A	3	174	174	270	3.08	2.74	3.17
12	A	3	261	261	261	3.50	3.36	3.02
13	A	3	252	252	252	3.65	2.99	2.85
14	C	3	366	366	366	4.05	3.64	3.14
15	C	4	334	334	451	3.78	3.59	4.29
16	B	3	276	276	276	3.60	3.26	3.08
17	B	3	333	333	333	4.00	3.61	3.26
18	A	3	306	198	306	3.58	2.53	3.05
Total		56	4894	4786	5467	65.07	57.53	56.92

TAYLOR PARK

OUT OF BOUNDS

1	Over any fence or on/beyond parking lot is OB.
2	Over any fence is OB.
3	Over any fence or in any water is OB.
4	Mando - If missed proceed to the drop zone with a one stroke penalty. Over any fence or in any water is OB.
5	Over any fence or in any water is OB.
6	Over any fence or in any water is OB.
7	Over any fence or in any water is OB.
8	Over any fence or in any water is OB.
9	In any water is OB.
10	Over any fence or in any water is OB.
11	In any water is OB. Standard OB rules apply.
12	Mando - If missed proceed to the drop zone with a one stroke penalty. Over any fence or in any water is OB.
13	Over any fence or in any water is OB.
14	In any water, inside the playground or on any concrete surrounding pavilions is OB.
15	In any water and inside the playground is OB.
16	In any water, inside the playground or on any concrete surrounding pavilions is OB.
17	On any concrete surrounding pavilions, Inside the roped/painted area designating the bathrooms, or in the parking lot is OB
18	In any water, inside the playground or on any concrete surrounding pavilions is OB.

PREVIOUS WINNERS

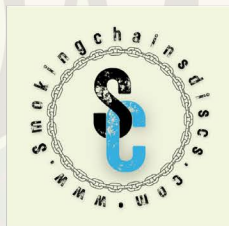
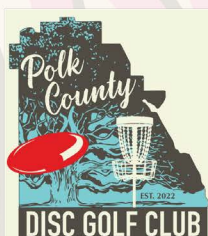
DIV	2019	2020	2021	2022	2023	2024	2025
MPO	Masters	Goodpasture	Goodpasture	Goodpasture	Schlitter	Blakely	Harvey
FPO	Fish	Widboom		Knauer	Lynds	Lynds	Lynds
MP40	Gage	Young	Seaman	Cash Jr	Young	Simpson	Henderson
FP40				Hudson			
MP50	Barber Sr.	Hosfeld	Bates	Frost	Frost	Frost	McCray
FP50		Hardyman					
MP60	Mitchell	Pituch	Lake	Mitchell	Barber Sr.	Barber Sr.	Wiley
FP60					Hardyman	Hardyman	
MP70							
FP70							
MA1	Boehme	Daroci	Patterson	Brightbill	Crowe	Cooper	Cooper
FA1	Trauscht	Trauscht	EriachoPaul	Trauscht	Trauscht	Trauscht	Anzualda
MA2	Chavez Luna	Hoover	Vandekerckhove	Dever	Hooper	Hooper	Shotts
FA2	Paul	Paul	Zimmerman	Copani	Barbre	Falk	Terway
MA3	Rogers	Bricking	Henson	Hokes	Brobst	Pillsbury	Phillippi
FA3	Blakeney	Blakeney	Cook	Ihlenfeldt	Falk	Baker	Wallace
MA40	Wesnofske	Dugmore	Dugmore	Withrow	Fugit	Curtis	Streetman
FA40	Conway	Sapp	Hayes	Ray	Sapp	Widboom	Parsons
MA50	Champion	Kiersnowski	Olko	Dugmore	Miesbauer	Brunke	Olko
FA50			Roque	Zimmerman	Conway	Morrell	
MA60	Ryalls-Clephane	Steer	Pituch	Shriver	Hill	Pituch	Hicks
FA60					Carden	Shepley	Shepley
MA70	Johnson		Rowley	Steer	Schweitzer	Ryalls-Clephane	Ryalls-Clephane
FA70				Gipson	Voss	Marion	Moyer
MA75						Rowley	Braden
FA80						Gipson	
MA4				Grice	Box	Abell	Miller
FA4				Anderson	Nardi	Brown	Asay
MJ18	Vaughn Jr.			Abell	Abell	Pelliccia	
FJ18				Arias		Holst	
MJ15				Schneider	Schneider	Schneider	Champion
FJ15				Watson	Dow		
MJ12				Huxhold	McDonald		Taylor
FJ12				Watson	McDonald		
MJ10				Sands			
FJ10							



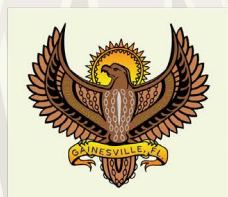
PLATINUM



GOLD



SILVER



BRONZE

