

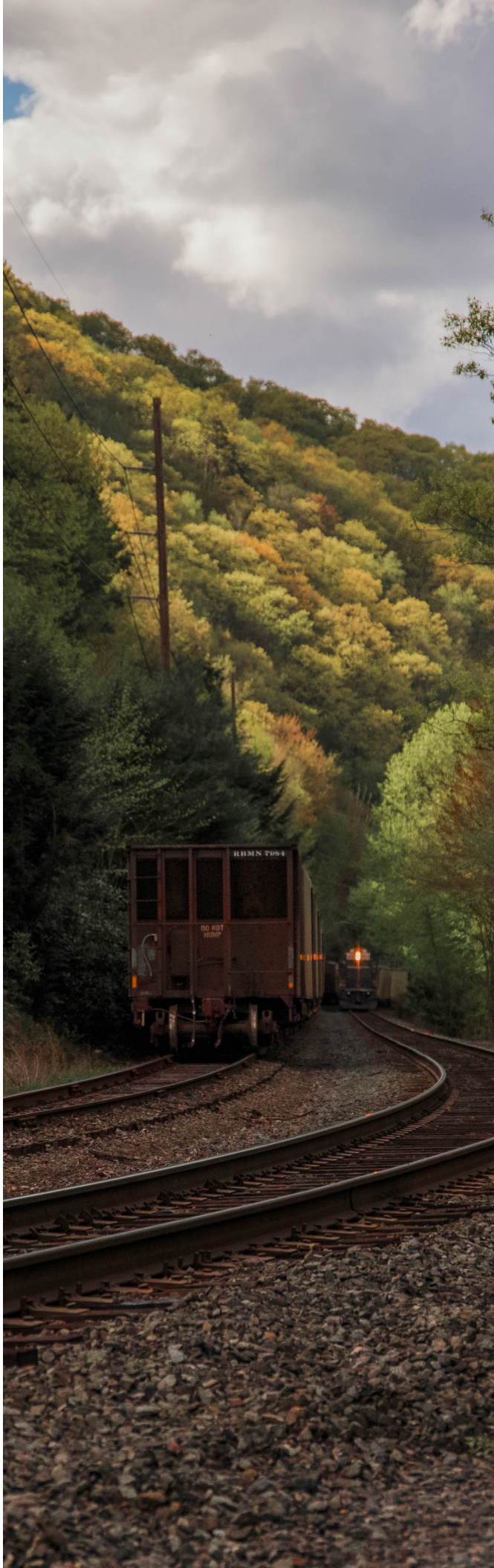


— The Village At —

HOUSER'S CROSSING

— Tamaqua, PA —

“Adventure, Eat, and Relax Guide”



Schuylkill County is a county in the Commonwealth of Pennsylvania. It is located in the heart of Pennsylvania's Coal Region and is part of Northeastern Pennsylvania. As of the 2020 census, the population was 143,049. The county seat is Pottsville.

The county was created on March 1, 1811, from parts of Berks and Northampton counties and named for the Schuylkill River, which originates in the county. On March 3, 1818, additional territory in its northeast was added from Columbia and Luzerne counties. The county is part of the Pottsville micropolitan statistical area.

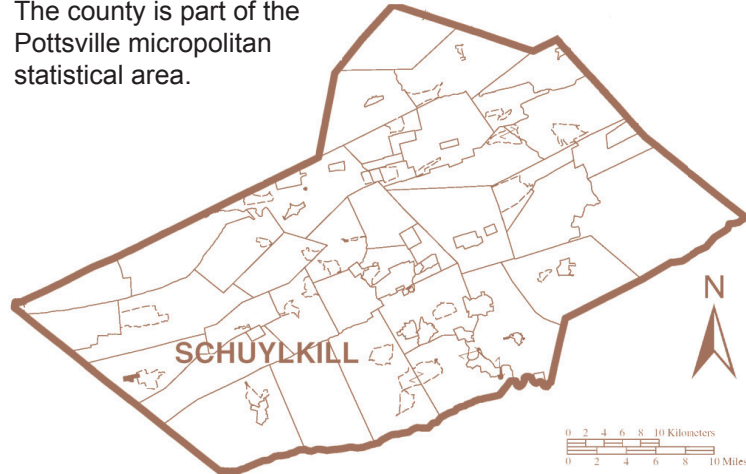


TABLE OF CONTENTS:

<i>Welcome Message</i>	<i>2</i>
<i>Village Amenities</i>	<i>3</i>
<i>Village Guest Rules</i>	<i>4</i>
<i>Village Map</i>	<i>5</i>
<i>Local Trails</i>	<i>6</i>
<i>State Parks & Scenery</i>	<i>7</i>
<i>Adventure</i>	<i>8</i>
<i>Shopping</i>	<i>10</i>
<i>Museums & Tours.....</i>	<i>11</i>
<i>Suggested Itineraries</i>	<i>13</i>
<i>Restaurants</i>	<i>14</i>
<i>Wineries & Breweries</i>	<i>17</i>
<i>Health & Wellness</i>	<i>19</i>
<i>Village Social Media</i>	<i>20</i>

For more local attractions, visit the Schuylkill County Visitors Center website: <https://schuylkill.org>

Welcome Message from Owner, Carolee



***“Thank you
for choosing
The Village at
Houser’s
Crossing!”***

My passion is to inspire others to adventure, relax, and enjoy life every day. The Village provides the perfect oasis to escape from the ordinary and enjoy the extraordinary that lies within Houser’s Crossing.

No matter how long or short your stay, The Village is your ticket to lasting memories for couples, families, and friends. Every guest becomes a part of the “Village” family and we welcome you to return year after year.

This book will walk you through the Village Amenities and all the surrounding area has to offer. Make sure to “like” our [Facebook](#) and “follow” our [Instagram](#) to stay up-to-date with current events, happenings, and activities. Yoga in the Grove and Massages in the Fern Garden are two of my personal favorites.

Village Amenities:

- Volleyball / Badminton Court
 - Horseshoe Pits
 - Lawn Games & Toys
 - Fire Pits & Relaxation Areas
 - Magical Fern Meditation Garden
 - Private Railroad Crossing
 - Lighted Picnic Grove
 - Private Yoga Instruction (\$)
 - Massages (\$) - Indoor/outdoor options available, weather dependent
 - Hiking Trails
 - Fishing
-

Ride the Rails to Jim Thorpe – All Aboard at Houser’s Crossing Flag Stop

Don’t miss the opportunity to embark on a scenic train adventure with the Reading Blue Mountain & Northern Railroad’s Flag Stop service at the Village! This unforgettable journey offers a chance to experience the beauty of the countryside from the comfort of the train.

TRAIN ITINERARY:

To board the train at the crossing, pre-purchased tickets are required. If you’ve already purchased your tickets in advance, be sure to have your email confirmation ready to show when boarding. For those seeking last-minute tickets, please contact the railroad’s Passenger Office directly at 610-562-2102.

Arrive at the crossing, by the bench area, by 9:45 a.m., as the train will arrive between 9:50 and 10:00 a.m. Please be punctual, as the train will not wait.

The ride itself is a breathtaking journey through the countryside, passing through a tunnel, crossing the famous High Bridge, and running alongside Lake Hauto before arriving in Jim Thorpe at 10:50 a.m.

While in Jim Thorpe, you’ll find a wealth of things to enjoy. The charming town offers a variety of great tours, shops, and restaurants, providing plenty of opportunities to explore, shop, and dine before your return trip.

If you plan to ride the 1:00 p.m. Lehigh Gorge Scenic Railway in Jim Thorpe and have already purchased your tickets, we recommend heading directly to the ticket booth to pick them up. Be sure to have your email confirmation on hand. If you did not purchase tickets in advance, you can buy a ticket for the 1:00 p.m. ride for \$10 by showing your roundtrip ticket at the ticket booth.

The train departs Jim Thorpe promptly at 4:15 p.m. and will return to The Village between 5:00 and 5:15 p.m.

OPERATING SCHEDULE:

The train runs on Saturdays and Sundays from March through December, including Memorial Day, the 4th of July, and Labor Day weekends. For more information on the trains and schedules, visit [Passenger Train Rides - Reading Blue Mountain & Northern](#)

Enjoy a relaxing and scenic ride to Jim Thorpe, along with all the sights, sounds, and flavors this historic town has to offer!



VILLAGE GUEST RULES

STRONGLY ENFORCED

We pride ourselves on providing clean and safe rental units for guests' enjoyment. Please treat the unit as if it was yours. Guest(s) must follow these rules at all times.

NO SMOKING/DRUG USE

Smoking/Drug Use is a Violation & not Tolerated, leaving the house in a condition not suitable for the next guest. This includes smoking tobacco, marijuana, illegal drugs, e-cigarettes, vape pens, diffusers, hookahs, incense, cigars and candle burning. If broken, a fee of up to \$1,000 will be charged.

RESPECT PROPERTY

Clean Up After Yourself: When something overcooks/runs over in the stove, microwave, or refrigerator – clean it up.

Do No Damage: Enjoy the luxury towels, linens, blankets, and pillows. Don't stain them – this includes the furniture and flooring also.

Only Flush Toilet Paper: Damages incurred by discarding other items via the toilet will not only cost you additional plumbing fees, but you will be without facilities for the remainder of your stay.

Stick To The Limit/No Party Policy: The occupancy limit is 4 per house with the exception of Sears Main Floor (6). No Unregistered Guests or Pets Allowed. Unregistered guest(s) will be vacated for trespassing. Sneaking pet(s) onto/into the property will terminate your stay immediately.

Consumables: Coffee, condiments, etc. are free. Guest discretion and inspection to consume these items are required. We take no responsibility for the consumables or any allergies that guest(s) may have.

Private Areas: Enjoy the house that you rented and Village Public Areas: Hiking Trails, Swings, Grove, & Magical Fern Garden. Additional Houses and Buildings are OFF Limits/Private. Check out the map of the grounds on the porch of Old Red House.

CHECK OUT POLICY/PROCEDURE

(Check In 3:00 p.m. – Check Out 11:00 a.m.)

Trash: Remove all trash from the house and put it into a container on the porch of Old Red House. Note there is a separate Blue Recycling Container if you choose to recycle.

Towels/Linens: Remove all towels, pillowcases, and fitted and flat sheet bed linens and put them in the laundry basket to be laundered.

General: Wash, dry, and put away kitchen items used. Turn off lights, close and lock all windows and doors. Return Heat/AC to original settings upon check-in.

Violations will not be tolerated; your stay will be immediately terminated and additional fees applied.

Thank you!
FOR CHOOSING TO STAY WITH US!



LET'S CONNECT!
Tag Us! Book Directly & Save!
Leave a Google Review!



← Tamaqua & Jim Thorpe
Route 309
Allentown →

Little Schuylkill River
Coal Breaker Lane

Relaxation Area

River Trail

Picnic & Relaxation Area

Carbon Lane

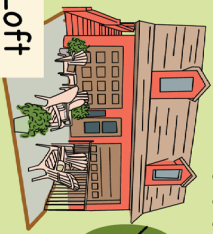


Private House Trailer



The Grove

Treetop Loft #24

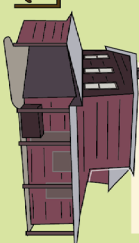


Private Brown Building

Lookout Border Trail

Border Trail

Anthracite Cultural Landmark



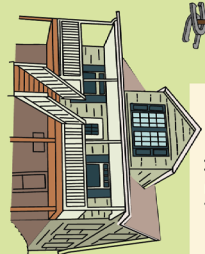
Private Houser Homestead #25

Private Garage

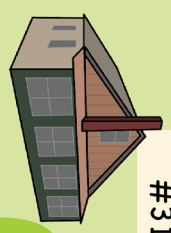
Private Garage



Butchie's Bungalow #27



Sears House #29



Private Harold's Hideaway #31

Reading Blue Mountain & Northern Railroad



Magical Fern Meditation Garden with Hammock & Zero Gravity Chair

Wildcat Mt Relaxation Area

To State Gamelands

Drivable Road
Walkable Trail

Local Trails

Lehigh and New England Trail

*** Accessible from property**

Counties: Schuylkill
Length: 2.7 miles
Trail end points: Route 309/Center St., just south of River St. and Dairy Rd.
Trail surfaces: Crushed Stone, Dirt
Trail category: Rail-Trail
<https://www.traillink.com/trail/lehigh-and-new-england-trail/>

Appalachian Trail

The Appalachian Trail is a 2,190+ mile long public footpath that traverses the scenic, wooded, pastoral, wild, and culturally resonant lands of the Appalachian Mountains. Conceived in 1921, built by private citizens, and completed in 1937, today the trail is managed by the National Park Service, US Forest Service, Appalachian Trail Conservancy, numerous state agencies and thousands of volunteers.
<https://www.nps.gov/appa/index.htm>

Stony Valley Rail Trail

The Stony Valley Rail Trail is a safe and family friendly way for everyone to explore Stony Valley and surround themselves with nature. History can easily be found underneath your feet and next to the pathway. To get around, mountain bikes, horses, walking strollers and wagons can easily be used on the rail-trail, as well as just walking by foot.

***Trail Guide and Parking Directions located on website**

<http://www.stonyvalley.com/rail-trail.html>

Switchback Railroad Trail

Counties: Carbon
Length: 18 miles
Trail end points: E. Holland at Amidon St. (Summit Hill) and North Ave. nr. Pine Ave. and Center Ave. nr. Packer Hill Rd. (Jim Thorpe)
Trail surfaces: Ballast, Dirt, Gravel
Trail category: Rail-Trail
<https://www.traillink.com/trail/switchback-railroad-trail/>

D&L Trail

Counties: Bucks, Carbon, Lehigh, Luzerne, Northampton
Length: 142.2 miles
Trail end points: Jefferson Ave, between Prospect St & Canal St (Bristol) and Lehigh St at Woodlawn Ave (Mountain Top)
Trail surfaces: Asphalt, Ballast, Crushed Stone, Dirt, Gravel
Trail category: Rail-Trail

Use Jim Thorpe Access Point: The Rail Trail runs through the Lehigh Gorge State Park in the Pocono Mountains offering breathtaking scenery and an easy riding surface. You can choose a 26 or 13 mile self-guided tour of amazing mountain scenery that winds its way along the Lehigh River.

<https://www.traillink.com/trail/dl-trail/>

Schuylkill River Trail

Counties: Berks, Chester, Montgomery, Philadelphia, Schuylkill
Length: 71.7 miles
Trail end points: South 56th St near Eastwick Ave (Philadelphia) and Main St & South Greenview Rd (Landingville)
Trail surfaces: Asphalt, Boardwalk, Concrete, Crushed Stone, Dirt, Gravel
Trail category: Rail-Trail
<https://www.traillink.com/trail/schuylkill-river-trail/>

Greater Hazelton Rails to Trail

Counties: Luzerne
Length: 5.6 miles
Trail end points: SR 93 & SR 424 and D&L Trail
Trail surfaces: Crushed Stone
Trail category: Rail-Trail
<https://www.traillink.com/trail/greater-hazleton-rails-to-trails/>

Schuylkill Valley Heritage Trail

Counties: Schuylkill
Length: 7.3 miles
Trail end points: US 209 nr. Old 209 Rd. (Tamaqua) and US 209/Union St. nr. St. Clair St. (Middleport)
Trail surfaces: Dirt, Gravel
Trail category: Rail-Trail
<https://www.traillink.com/trail/schuylkill-valley-heritage-trail/>

For a complete list of Schuylkill County Trails, visit the following link: <https://schuylkill.org/trails-directory/>

State Parks & Scenery

The Little Schuylkill River

** Accessible from property*

Pennsylvania Scenic River System and River Trail System. Access: Route 443 and Route 895. 17 miles of canoe-able river. Two-mile section of special regulations (fly fishing & artificial) open to year-round fishing, passes through to state game lands.

<https://schuylkill.org/business/the-little-schuylkill-river/>

Owl Creek Reservoir

** 5 minutes from property*

172 Owl Creek Rd
Tamaqua, PA

Open everyday: 6:00 am – 8:00 pm

Upper Owl Creek Reservoir and Lower Owl Creek Reservoir are 67-acre and 26-acre impoundments, respectively, created by two adjacent dams on Owl Creek, a tributary to the Little Schuylkill River, located south of Tamaqua Borough, Schuylkill County. Upper Owl Creek Reservoir was opened to fishing in 2002 after the Borough decided to allow low-impact recreation. At that time, the lower reservoir had been drained and was dry with the reservoir bottom characterized by a thicket of shrubs among numerous natural boulders.

<https://www.facebook.com/OwlCreekReservoirCommission/>

Lehigh Gorge State Park

S Lehigh Gorge Dr
Weatherly, PA 18255

A deep, steep-walled gorge carved by a river, thick vegetation, rock outcroppings, and waterfalls characterize Lehigh Gorge State Park. In Luzerne and Carbon counties in eastern Pennsylvania, the park follows the Lehigh River from the outlet of the U.S. Army Corps of Engineers Francis E. Walter Dam at the northern end, to the town of Jim Thorpe at the southern end of the park. Whitewater boating and biking are popular activities.

<https://www.dcnr.pa.gov/StateParks/FindAPark/LehighGorgeStatePark/Pages/default.aspx>

Mauch Chunk Lake Park

625 Lentz Trail
Jim Thorpe, PA 18229
(570) 325-3669

From fishing in the lake to hiking through the forest trails, you'll be one with nature at Mauch Chunk Lake Park in Jim Thorpe. This public park offers outdoor activities year-round. The 345-acre lake is excellent for fishing and boating. A sand beach and swimming area are open from Memorial Day weekend through Labor Day. Pack a picnic for a day trip or spend the night in the park's campsite. Hikers enjoy the scenic Shoreline Trail, while the Fireline Trail offers a fun challenge.

<https://www.discovernepa.com/thing-to-do/mauch-chunk-lake-park/>

Jim Thorpe

Route 209, Jim Thorpe Railroad Station
Jim Thorpe, PA 18229

(570) 844-2001

Jim Thorpe, PA is consistently ranked on national media "Best" lists, and recognized among the most fun, most beautiful, most romantic, and best adventure towns to visit. Nestled in the breathtaking Lehigh Gorge, this Victorian town is teeming with history, romance, and family fun. You'll enjoy the walkable downtown's accommodations, shops, restaurants, pubs, wine-tasting, and live entertainment, as well as all the outdoor adventure you'd expect in the Pocono Mountains.

<https://www.poconomountains.com/jim-thorpe/>

Weissport Canal

Can ride or walk from Jim Thorpe to Weissport. Lehigh River on one side and Canal on the other.

One of Carolee's favorite bike rides.

<https://delawareandlehigh.org/map/trail-head/weissport-trailhead/>

Hickory Run State Park

3613 PA-534
White Haven, PA 18661

The 15,990-acre Hickory Run State Park, Carbon County, lies in the western foothills of the Pocono Mountains. This large park has:

- More than 40 miles of hiking trails
- Three state park natural areas
- Miles of trout streams

Boulder Field, a striking boulder-strewn area, is a National Natural Landmark.

<https://www.dcnr.pa.gov/stateparks/findapark/hickoryrunstatepark/pages/default.aspx>

Beltzville State Park

2950 Pohopoco Drive
Lehighton, PA 18235-8905

610-377-0045

The 3,002-acre Beltzville State Park is in the southern foothills of the Poconos. Pohopoco Creek, an excellent trout stream, feeds the 949-acre Beltzville Lake, which is a rest stop for migrating waterfowl and is a destination for boaters and anglers. The sand beach and picnic pavilions are very popular.

<https://www.dcnr.pa.gov/StateParks/FindAPark/BeltzvilleStatePark/Pages/default.aspx>

Locust Lake State Park

Located in Ryan Township, Accessible from I-81, Exit 131 and Routes 54, 61, and 209.

Park features Camping, Hiking, Swimming, Fishing, Boating, Playground and Interpretive Programs.

<https://www.dcnr.pa.gov/StateParks/FindAPark/LocustLakeStatePark/Pages/default.aspx>

Hawk Mountain Sanctuary

1700 Hawk Mountain Rd.
Kempton, PA 19529

Visitors Center open 9 a.m. – 5 p.m. daily.

The view from Hawk Mountain offers beautiful vistas and great looks at raptors, some of the largest and most charismatic birds in the world. Learn about the role these predators play in the ecosystem and stay up-to-date on our local-to-global science, training, and education programs.

<https://www.hawkmountain.org>

Tuscarora State Park

687 Tuscarora Park Road
Barnesville, PA 18214-2810

570-467-2404

When viewed from the lake or the day-use area, Locust Mountain seems to drop right into the southern side of Tuscarora Lake. The scenic picnic area plays host to many day trips and family reunions and the lake is a popular fishing spot. The 1,618-acre park is home to the park office and visitor center for Tuscarora and Locust Lake state parks. Visitors are welcome to gather information about the parks, the environmental education program, and local attractions. Locust Lake State Park is nearby

<https://www.dcnr.pa.gov/StateParks/FindAPark/TuscaroraStatePark>

Adventure

Schuylkill Racquet Club & Fitness Center

25 S Greenview Rd,
Orwigsburg, PA 17961

(570) 366-1422

Open 24 Hours

Schuylkill Racquet Club is a full service fitness center with strength training, newly upgraded cardio and strength equipment, world class group fitness programming, including Les Mills classes, newly re-done tennis courts, and a racquet ball court and squash court. Stop in today and let us show you how we can help you reach your fitness goals!

<https://local.republicanherald.com/orwigsburg-pa/schuylkill-racquet-club-and-fitness-center-570-366-1422>

The Art of Escape

61 S. Tulpehocken St., Suite 2
Pine Grove, PA 17963

570-640-9551

Mon-Thues: CLOSED

Friday: 6:00 pm – 10:00 pm

Saturday: 12:00 pm – 10:00 pm

Sunday: 12:00 pm – 8:00 pm

Come to the area's only escape room, The Art of Escape LLC, for a fun and unique experience. Gather your group of friends, family or co-workers and collaborate to find clues, solve puzzles, and beat the clock to escape the room.

<https://www.theartofescapepg.com>

Whitewater Rafting Adventures

P.O. Box 65
Nesquehoning, PA 18240-0065

(570) 669-9127

Everyday: 9:00 am – 6:00 pm

Whitewater rafting along the scenic Lehigh River. Family fun, group discounts, summer float trips. Call for brochure and special seasonal water releases along the river.

<https://www.adventurerafting.com/>

Knoebels Amusement Park

391 Knoebels Blvd
Elysburg, PA 17824

800-487-4386

For full hours and Dates open, visit Website

Knoebels Amusement Resort is a family-owned and operated amusement park, picnic grove, and campground in Elysburg, Pennsylvania. Opened in 1926, it is America's largest free admission park. The park has more than 60 rides including three wooden roller coasters, three steel roller coasters, a 1913 carousel, and a haunted house dark ride.

<https://www.knoebels.com>

Anthracite Outdoor Adventures

4100 State Route 125,
Coal Township, PA 17866

570-648-2626

Wednesday: CLOSED

Thurs-Tues: 9:00 am – 6:00 pm

AOAA Trails is an extensive off-road trail system conveniently located in Eastern Pennsylvania. We've been named one of the top 10 destinations in the country for ATVs, full-size vehicles, and dirt bikes. Our hundreds of miles of diverse trails on 6,500 acres, combined with top-notch facilities, give our guests experiences that have them coming back for more

<https://www.aoaatrails.com>

Schuylkill County Fair

***First Week in August**

2270 Fair Rd,
Schuylkill Haven, PA 17972

(570) 754-3247

Visit Website for full Hours and dates

Great entertainment and shows, exciting events and competitions, and the best food around!

<https://www.schuylkillfair.com>

Climb-a-lot Clubhouse

45 Plaza Drive, Suite 350
Tamaqua, PA 18252

570-668-1966

Tuesday: CLOSED

Sun, Mon, Wed, Thurs: 11:00 am – 7:00 pm

Fri-Sat: 11:00 am – 8:00 pm

Come and play with your child in our 2800 square foot, specially designed, ADA accessible, in-door playground. Climb and play in our tree house, navigate our tunnels and tubes, and slide the four slides. We also have a special play area for the under-three crowd, a large party area, and kid-friendly arcade games. Climb-A-Lot Clubhouse is for kids aged ten and under, but parents or older siblings are welcome to help toddlers in the equipment.

<https://www.climbalotclubhouse.com/home/>

Penn's Peak

325 Maury Road
Jim Thorpe, PA 18229

(610) 826-9000

Sat-Sun: OPEN

Mon-Fri: 10:00 am – 6:00 pm

***Events may cause hours to changes, visit the web-site for full list of events**

Enjoy a spacious dance floor, lofty ceilings, concert bar/concession area and a full service restaurant and bar aptly named Roadies.

<https://www.pennspeak.com>

Manhoning Drive-In

635 Seneca Road,
Lehigh, PA 18235

Gates open at 6:00 pm

***Visit website for full schedule**

The Mahoning Drive-In Theater was built in 1948, and opened for its first season the following year. Since then, it has entertained moviegoers for over half a century on the largest CinemaScope screen in Pennsylvania! We offer an exclusively retro 35mm film program, which is presented reel-to-reel via original 1940's Simplex projectors!

<https://www.mahoningdit.com>

Hershey Park

100 Hersheypark Dr.
Hershey, PA 17033

717-534-3900

Sun-Thurs: 10:00 am – 9:00 pm

Fri-Sat: 10:00 am – 10:00 pm

HOURS SUBJECT TO CHANGE, CHECK WEBSITE

Hersheypark is a family theme park in Hershey, Pennsylvania, about fifteen miles east of Harrisburg, and 95 miles west of Philadelphia. The park was founded in 1906, by Milton S. Hershey as a leisure park for the employees of the Hershey Chocolate Company.

<https://www.hersheypark.com/>

Famous Reading Outdoors

200 Mahantongo Street
Pottsville, PA 17901

(570) 573-1038 | (570) 622-5150

Open Everyday

January – March: 7:00 am – 5:00 pm

April – September: 7:00 am – 8:00 pm

October – December: 7:00 am – 5:00 pm

20, 000 acres of Pennsylvania off-roading and trails.

Sun up to Sun down – All Year Long – One Great Price.

<https://readingoutdoors.com>

Dorney Park

4000 Dorney Park Rd.
Allentown, PA 18104

(610) 395-3724

Mon-Thurs: 10:30 am – 9 pm

Fri-Sun: 10:00 am – 10:00 pm

Only at Dorney Park & Wildwater Kingdom will you find the most exciting and thrilling things to do in Allentown, PA, with over 60 world-class rides, one of the northeast's largest waterparks, live entertainment, thrills for the little ones at Planet Snoopy, and amusement park favorite foods including a build-your-own funnel cake bar. Family-friendly special events will keep you coming back for new ways to play all season long.

<https://www.dorneypark.com/>

Tamaqua Community Arts Center

125 Pine St.
Tamaqua, PA 18252

570-668-1192

Sunday: CLOSED

Mon, Fri, Sat: 10:00 am – 1:00 pm

Tues, Thurs: 10:00 am – 1:00 pm, 4:00 pm – 8:00 pm

Tamaqua Community Art Center is a place to create, appreciate, learn, and instruct in the fine & performing arts. Regularly scheduled art gallery showings, theater performances, and concerts.

<https://www.tamaquaarts.org>

Narrow Valley Sportsplex

20 Market Street
Nesquehoning, PA 18240

570-273-5555

Mon-Sat: 6:00 am – 10:00 pm

Sunday: 8:00 am – 8:00 pm

Narrow Valley Sportsplex in Nesquehoning, PA, is a state-of-the-art facility offering a range of sports and fitness options, including pickleball, basketball, volleyball, batting cages, and a golf simulator. Designed for athletes of all ages and skill levels, it provides ample space and equipment for staying active, whether for recreational fun or serious training.

<https://www.hersheypark.com/>

Shopping

Country Junction

6565 Interchange Rd.
Lehighton, PA 18235

(610) 377-5050

Everyday: 8:00 am – 7:00 pm

Country Junction is known as the “World’s Largest General Store.” It offers a wide variety of goods and family-friendly attractions, including a petting farm, arcade, and party services, making it a unique shopping and entertainment destination.

<https://www.countryjunction.com/>

Vintage 61 Store

1070 Centre Turnpike
Orwigsburg, Pennsylvania 17961

(570) 968-4720

Mon–Tues: CLOSED

Wed–Fri: 10:00 am – 5:00 pm

Sat–Sun: 11:00 am – 4:00 pm

Occupying a 20,000 plus square foot building with over 30 vendors, including a children’s boutique, we have an amazing selection of home goods. We offer painted furniture, three lines of specialty paints, home decor, textiles, antiques, women’s clothing, vintage goods, and a plethora of curated merchandise to satisfy any home enthusiast who walks through our doors.

<https://www.vintage61storehouse.com>

Hope Hill Lavender Farm

2375 Panther Valley Road
Pottsville, PA 17901

(570) 617-0851

Visit Website for yearly hours

Hope Hill Lavender Farm produces high quality lavender products from essential oil distilled on our lavender farm from our lavender plants. We have seasonal hours, online ordering, and can be found in some retail locations – see website for this information.

<https://hopehilllavenderfarm.com>

Hometown Farmer’s Market

125 Mahanoy Ave. Route 54
Tamaqua, Pa 18252

570-668-2630

Wednesday: 8:00 am – 7:00 pm

This indoor / outdoor market has been doing business since 1950. The market is located South of the Pocono region, 20 miles South of Interstate 81 in the heart of the coal regions on Route 54 West, just outside of Tamaqua, Pa. Situated on 15 plus acres with a multitude of vendors. Plenty of free parking for all customers. The market is open year round every Wednesday from 8am to 8pm RAIN OR SHINE

<http://hometownfarmmkt.com>

The Hofford Mill

500 Bridge St
Weissport, PA 18235

610-875-6465

Visit Website for updated hours

Originally built in 1896 as a lumber mill, 500 Bridge St has been operated as a general store, a furniture repair facility, and most well known--a silk and textile mill. Live Music, e-bike rentals, specialty classes and Gorge Eatery.

<https://www.thehoffordmill.com>

Tink’s Antiques

28 S Railroad St
Tamaqua, PA 18252

(570) 449-2094

Mon–Thurs: CLOSED

Fri–Sun: 11:00 am – 5:00 pm

Turn of the century brick building filled with collectables, local artisan, antiques, retro candy, and baked goods. The perfect place for an afternoon browse back in time. Great cool region, friendly service housed in a beautiful historic building.

<http://www.tinksantiques.com>

Boyers Grocery Store

210 Cedar St,
Tamaqua, PA 18252

(570) 668-2538

Everyday: 6:00 am – 9:00 pm

Close by to the Village, can purchase premade sandwiches and salads in addition to grocery shopping.

<https://www.boyersfood.com>

Studio 895

1138 Summer Valley Rd
New Ringgold, PA

(570) 527-1764

Mon–Wed: CLOSED

Thursday: 11:00 am – 6:00 pm

Friday: 11:00 am – 5:00 pm

Sat–Sun: 10:00 am – 4:00 pm

Come in and browse. Many new items added every week. Something for every decor.

<https://www.facebook.com/Studio895WH/>

Cabelas

100 Cabela Dr,
Hamburg, PA 19526

(610) 929-7000

Mon–Sat: 9:00 am – 9:00 pm

Sunday: 9:00 am – 7:00 pm

Retail mainstay stocking a huge inventory of hunting, fishing & camping supplies, plus boats & ATVs.

<https://www.cabelas.com>



Museums & Tours

Tamaqua Historical Society Museum

118 W Broad St.
Tamaqua, PA 18252

610-597-6722

HOURS VARY

Call to make an appointment

The Tamaqua Historical Society is a 501(c)3 non-profit dedicated to preserving and promoting the history and culture of the greater Tamaqua area and eastern Schuylkill County. The three primary sites we own and operate are the Tamaqua Area Historical Museum, the 1801 Moser log home, and the 1848 Hegarty Blacksmith Shop.

<https://www.tamaquahistoricalociety.org>

Yuengling Brewery

420 Mahantongo St,
Pottsville, PA 17901

(570) 628-4890

Sunday: CLOSED

Mon-Sat: 9:00 am - 5:00 pm

America's oldest brewery is right here in Pottsville, Pennsylvania. Unique tours of this National Historic Landmark are offered daily and on special weekends. Enjoy the free tour and even a free sample at the end. Situated along historic Mahantongo Street, the Yuengling brewery has a Gift Shop and Museum.

<https://www.yuengling.com/americas-oldest-brewery-pottsville-pa/>

Pioneer Tunnel Coal Mine

19th & Oak Streets,
Ashland, PA. 17921

570-875-3850

Everyday: 10:00 am - 5:00 pm

Pioneer Tunnel is owned and operated by Ashland Community Enterprises, a non-profit 501(C)(3) corporation established in 1962, a tourist attraction dedicated to continuing to promote, and preserve the history, and heritage of anthracite coal mining industry. Ashland Community Enterprises is operated by an unpaid, volunteer board of directors.

<https://www.pioneertunnel.com>

Eckley Miners' Village Museum

2 Eckley Main Street
Weatherly, PA 18255

(570) 636-2070

Mon-Wed: CLOSED

Thurs-Sun: 10:00 am - 4:00 pm

Perched atop a mountain ridge at the center of the planet's largest concentration of anthracite coal, Eckley Miners' Village is a world within a world. Visit our authentic 19th-century company mining town to experience the lives of the working-class families who fueled America.

<http://eckleyminersvillage.com/>

No. 9 Mine & Museum

9 W. Dock Street
Lansford, PA 18232

(570)-645-7074

Mon-Tues: CLOSED

Wed-Sun: 10:00 am - 4:00 pm

Museum open year-round, Wednesday and Thursday, Noon-4 p.m. Mine open May to November with mine tours Friday thru Sunday 10 a.m.-4 p.m.

<https://no9minemuseum.wixsite.com/museum>

The Old Jail Museum

128 West Broadway
Jim Thorpe, PA 18229

(570) 325-5259

Wednesday: CLOSED

Thurs-Tues: 12:00 pm - 4:00 pm

Wander the Old Jail's cold hallways. Peek in Cell 17 to get a glimpse of the Mysterious Handprint on the Wall. Stand under the gallows on which seven of the accused Molly Maguires were put to death! Creep into the eerie dungeon. Don't forget to check out our book, "Ghosts of the Molly Maguires?", a collection of visitors' first-hand accounts of strange happenings in the Old Jail.

<http://www.theoldjailmuseum.com/>

Lehigh Gorge Scenic Train Rides

1 Susquehanna Street
Jim Thorpe, PA 18229

(570) 325-8485

Visit Website for tickets and hours

Relax and ride comfortably in our vintage coaches built as early as 1917 pulled by diesel engines. The narrated round-trip follows the majestic Lehigh River over bridges, through Glen Onoko, and into the Lehigh Gorge State Park. High-rising cliffs, mountain scenery, and wildlife surround the train along the forested route to Old Penn Haven.

<https://www.lgsry.com>

The Asa Packer Mansion Museum

Packer Hill Avenue
Jim Thorpe, PA 18229

(570) 325-3229

Tues-Wed: CLOSED

Thurs-Mon: 11:00 am - 3:00 pm

The Mansion was the home of philanthropist, railroad magnate, and founder of Lehigh University, Asa Packer. Built in 1861 by Philadelphia architect, Samuel Sloan, the home was constructed over a span of two years and cost a total of \$14,000 dollars. Topped by a red-ribbed tin roof and a central cupola, or belvedere, the home was built over a cast iron frame and consists of 3 stories, 18 rooms and approximately 11,000 square feet of living space.

<http://www.asapackermansion.com/>

Steamtown National Historic Site

350 Cliff St.
Scranton, PA 18503
(570) 340-5200

Open Everyday: 9:00 am – 5:00 pm

You'd feel heat from the firebox, smell hot steam and oil; you'd hear the whistle, feel the ground vibrate, and watch as one-ton drive rods turned steel wheels. Remember the sound of "chuff-chuff" from the smokestack? Today, you can learn the history of steam railroad transportation, and the people who built, repaired and rode, as we work to preserve a special era in America's industrial history!

<https://www.nps.gov/stea/index.htm>

Schuylkill County Agriculture Museum

2270 Fair Rd,
Schuylkill Haven, PA 17972
570-366-1989

Visit website for yearly dates and hours

The Schuylkill County Agricultural Museum's mission is to preserve the history of local agriculture through many diverse means and offers a number of attractions to interest the whole family. The museum offers self-guided tours, exhibits operating antique farm machinery, equipment, engines, woodworking tools, a sawmill and household appliances.

<https://www.schuylkillfair.com/ag-museum/>

Carbon County Environmental Education Center

151 E. White Bear Drive
Summit Hill, PA 18250

(570) 645-8597

Mon-Fri: 8:00 am – 4:30 pm

Sat-Sun: 10:00 am – 2:00 pm

Since its humble beginning in 1983, Carbon County Environmental Education Center has grown into a premier outdoor and wildlife educational facility. In a 1992 expansion, the building and grounds underwent considerable improvements. Yet the mission and motto remain the same: Conservation Through Education. Today, CCEEC offers an array of discovery opportunities for school students, civic organizations, and the general public. In addition to classrooms and educational displays, the barn also houses an environmental research and lending library, and a wildlife rehabilitation hospital.

<https://www.carboneec.org/>

Jerry's Classic Car & Collectables Museum

394 South Centre Street
Pottsville, PA 17901
570-622-9510 | 570-628-2266

Mon-Thurs: CLOSED

Fri-Sun: 12:00 pm – 5:00 pm

Over 20,000 collectibles housed in old Studebaker dealership. Relive the 50's & 60's on two floors. The museum will open on Fridays, from May 1st through October 31. Museum is open Friday through Sunday, Noon-5 p.m.

<https://jerrysmuseum.com>

Fighter's Heaven

58 Sculps Hill Rd,
Orwigsburg, PA 17961
(570) 968-2961

Mon-Fri: CLOSED

Sat-Sun: 10:00 am – 5:00 pm

Through the preservation and restoration of the Training Camp in Deer Lake, PA, create a destination that will, for decades to come, remind some, and educate others, about the remarkable and inspirational life of Muhammad Ali. Our Public Opening is being planned for June 2019. Hours will be from 10:00am-5:00pm on Saturdays & Sundays. Visits/Tours can be arranged for weekdays by contacting us with a day and time that works for you.

<https://fightersheaven.com/>

Suggested Itineraries

**Here are some suggested itineraries for Schuylkill County. Mix and match stops to suit your own schedule/interests to create memories that will last a lifetime!*

- [From the Center of the Earth, to the Top of the World](#): Travel from inside a coal mine to the top of a mountain and soar with the eagles!
- [The Scenic Southern Schuylkill County](#): See firsthand what makes Pennsylvania so beautiful!
- [Schuylkill County Wine Tour](#): Explore the lush vineyards and family owned wineries Schuylkill County has to offer!

From the Center of the Earth, to the Top of the World

Morning: Your tour begins at the [Pioneer Tunnel Coal Mine](#) in Ashland, PA where you will explore the world of Deep Mining in a former Anthracite Coal Mine. From Ashland, tour the Coal Region of Upper Schuylkill County as you take a driving tour through Girardville, the home of the Molly Maguires, and a visit to the [Anthracite Miners Memorial](#) in Shenandoah.

For lunchtime dining, you may want to visit the [Dutch Kitchen](#) in Frackville or in The Molly Maguire Tunnel Room at [The Wooden Keg Tavern](#) in St. Clair. After lunch take a drive to Pottsville, home of America's Oldest Brewery, [The Yuengling Brewery](#), where you can learn about the brewing process and visit the underground storage caves.

From the Brewery you may want to visit [Jerry's Classic Cars and Collectibles Museum](#) on South Centre Street, before making your way south on Route 61 to the [Hawk Mountain Sanctuary](#). Take a hike out to the South Lookout and check out the view atop the Blue Mountains where you may see an Eagle or a Hawk coasting along the ridgeline as they migrate southward.

The Scenic Southern Schuylkill County

Begin your day with breakfast at [Buddy's Log Cabin Family Restaurant](#) in Pine Grove and then travel east along Route 443 to Route 895.

From Pine Grove take Route 895 east to the Village of Rock and check out the two Covered Bridges of Schuylkill County. From the village of Rock continue east to [Schuylkill County Fairgrounds](#) and the [Schuylkill County Agriculture Museum](#).

For lunch take a brief drive [The Brick House Grill](#) in Orwigsburg. After lunch, stop by the [Long Trout Winery](#) and check out the Frisbee Golf Course, or sample some of the unique wines.

From there, take a drive to the [Hawk Mountain Sanctuary](#) and take in a breathtaking view of Schuylkill County from the North lookout. After Hawk Mountain drive to [Heisler's Dairy Bar](#) and sample a milkshake or ice cream cone, or play a round of miniature golf.

From Heisler's, take a quick drive out to the [Galen Glen Winery](#) followed by a visit to [Hope Hill Lavender Farm](#).

Schuylkill County Wine Tours

(Wine Tour should begin either at Galen Glen Winery or Benigna Creek Winery. For the purposes of this tour we will begin at Benigna Creek)

Morning: [Benigna's Creek Winery](#), Klingerstown.

Drive via Hegins Valley to Interstate 81 south to Pine Grove Exit.

Through Pine Grove, lunch at the [Red Lion Café](#).

Visit [Stone Mountain Wine Cellars](#), Friedensburg.

Drive via Hidden Valley to Route 61 to [Long Trout Winery](#), Wine tasting and perhaps Frisbee Golf.

From Long Trout, via Route 895, possible detour to [Hawk Mountain Sanctuary](#) to [Galen Glen Winery](#)

Dinner at [Tamaqua Station Restaurant](#) in the historic train station, Tamaqua, where you can continue your PA wine tasting experience with their extensive selection of Pennsylvania Wines.

Restaurants

Tamaqua Station Restaurant

\$\$\$

18 N. Railroad St.,
Tamaqua, PA, 18252
(570) 668-3800

Wed-Saturday: 11:00am - 9:00pm
Sunday: 10:00am - 8:00pm

Next Stop, the Tamaqua Railroad Station! Take a step into the past as you enter Tamaqua's restored 1874 Philadelphia & Reading Railroad. Saved from the brink of demolition, Tamaqua Railroad Station now serves as a heritage center, as well as a cultural and economic hub in Historic Tamaqua. Be sure to make a stop at the Tamaqua Railroad Station on your next visit.

<https://www.facebook.com/tamaquastationrestaurant/>

La Dolce Casa (DiMaggios)

\$\$

16 W Broad St,
Tamaqua, PA 18252
(570) 810-2211

Tues-Sat: 11:30am - 9:00pm

Tamaqua, PA hides a true pizza gem - welcome to La Dolce Casa - DiMaggio's! We're a local restaurant offering delicious pizza and great service in Schuylkill County. In addition to fabulous pizza, they are a full Italian restaurant! They are famous for their Christmas Light display from mid November through February!

***Will deliver to village.**

<https://www.ladolcecasatamaqua.com>

Joe's Pizza

\$

* 5 minutes from property
565 W Penn Pike
Tamaqua, PA 18252

(570) 366-8660

Monday: CLOSED

Tues-Sat: 11:00am - 9:00pm

Sunday: 12:00pm - 7:00pm

Joe's Pizza is a pizza and sub shop in South Tamaqua. Nothing fancy, simply good food! Almost directly across the street from The Village in the strip mall.

<http://www.buddyslogcabin.com>

Gimbel's Restaurant

\$\$

123 East Broad St.
Tamaqua, PA 18252

570-810-2211

Tues-Sat: 11:00am - 9:00pm

Sun-Mon: CLOSED

Gimbels LLC is a family-owned restaurant offering farm-to-table catering and a food truck service. Specializing in burgers made from pasture-raised beef, they provide fresh, locally sourced ingredients to deliver a high-quality dining experience.

<https://www.facebook.com/GimbelsLLC/>

Leiby's Ice Cream & Restaurant

\$\$

848 W Penn Pike,
Tamaqua, PA 18252
(570) 669-3226

Mon-Tues: CLOSED

Wed-Sat: 11:00am - 9:00pm

*Hot Food Served until 8:00 pm

Great ice cream & super close to the village. Make a right out of the bridge.

½ mile down Rt. 309 heading North.

<https://www.leibysrestaurant.com>

Heisler's Dairy Bar (Seasonal)

743 Catawissa Road,
Tamaqua, PA 18252
(570) 668-3399

Wednesday: CLOSED

Thurs-Tues: 11:00am - 10:00pm

Heisler's Cloverleaf Dairy is located in the beautiful Lewistown Valley. Even though we are tucked away "in the middle of nowhere," thousands of people manage to find us every year. The dairy bar was opened in 1957 and it was a huge attraction then, as it is today. It truly has become a local landmark and favorite to people of Schuylkill and surrounding counties.

<http://www.heislersdairy.com>

Chantilly Goods & Ice Cream

\$

200 Bridge St,
Weissport, PA 18235

(610) 379-4767

Mon-Fri: 4:00pm – 8:00pm

Sat-Sun: 12:00pm – 8:00pm

HOURS MAY VARY

Chantilly Goods is a ice cream, vintage soda fountain, coffee, tea and candy shop located at the corner of Bridge and White St in historical Weissport, PA, just outside of Lehighton on the way to Jim Thorpe.

<https://www.facebook.com/chantillygoods>

Skipper Dipper's Dairy Bar

\$

391 Claremont Ave
Tamaqua, PA 18252

(570) 668-2515

Mon-Thurs: 8:00am – 8:00pm

Friday: 8:00am – 3:00pm

Sat-Sun: 8:00am – 8:00pm

Skips Dairy Bar & Grill is a family-owned ice cream shop and restaurant that is open year round and located on Route 309 in Hometown, PA, just north of Tamaqua. Skips serves breakfast, lunch, & dinner. Don't forget to leave room for our delicious ice cream and other treats!

<https://www.skipsdairybar.com>

Cousins Pub & Cocktail Lounge

\$\$

1249 Mahoning Dr W.
Lehighton, PA 18235

(570) 386-2351

Mon-Wed: CLOSED

Thurs-Sun: 4:00 pm – 9:00 pm

Looking for a cozy new spot to bring your family, or have a date night with your significant other? Visit Cousins II Cocktail Lounge! Known for their fresh seafood and homemade, enjoy a nice dinner out at Cousins's. Don't forget to say hi to the village's favorite bartender/owner Kenny!

<https://www.facebook.com/people/Cousins-II-Cocktail-Lounge/100029060456314/>

Basile's Italian Restaurant & Pizzeria

\$\$

401 Claremont Ave.
Tamaqua, PA 18252

(570) 668-8888

Mon, Wed, Thurs: 10:30am – 9:00pm

Fri & Sat: 10:30am – 9:30pm

Sun: 11:30am – 9:00pm

Founded in 2009, Basile's Italian Restaurant & Pizzeria offers a wide range of authentic Italian food in the Tamaqua & Hometown, Pennsylvania area. Our dishes are made with only the freshest ingredients and every dish is made to order. Whether you are in the mood for garlic laden shrimp scampi, fettuccini alfredo, or a crab cake sandwich, Basile's is the place for you.

<https://www.basilesitalianhometown.com>

The Brick House Grill

\$\$

705 W Market Street
Orwigsburg PA, 17961

570-366-5220

Sunday: 12pm – 8pm

Monday: CLOSED

Tues-Thurs: 12:00pm – 9:00pm

Friday & Saturday: 12pm – 10pm

HAPPY HOUR: Tues-Sun: 4pm – 6pm

The Brickhouse is a New American restaurant located in the quaint rural town of Orwigsburg, Pennsylvania. Surrounded by rolling fields + farmlands, we pride ourselves with offering locally sourced, seasonal ingredients all year long. Our menu offers a wide variety of options, from up-scale comfort foods, contemporary dishes, craft beer, artisan cocktails, + more. Our dining experience offers guests warm hospitality, attentive service, indoor dining, and seasonal patio dining.

<https://www.bhgrill.com>

Dunkin Donuts

\$

Valero Gas Station, 30 Center St,
Tamaqua, PA 18252

(570) 668-4178

Everyday: 4:30am – 10:00pm

Less than 5 min from the Village at 30 Center Street, Valero Gas Station, Tamaqua. Make a left out of bridge heading South on Rt. 309.

<https://www.dunkindonuts.com>



Circa 1898

2186 Mahoning Drive West
Lehigh, PA 18235

(484) 629-6008

Wednesday – Sunday

Bar: 4:00 pm – close

Dinner service: 4:30 pm – 9:00 pm

The Café:

Wednesday – Friday

6:30 am – 2:00 pm

Saturday – Sunday

8:00 am – 2:00 pm

Located in a beautifully restored Victorian-era building in Mahoning Township, we've created a space that combines timeless charm with modern comforts. Whether you're looking for elegant dining in our Victorian-inspired dining room, hearty favorites in our 21+ Western-themed saloon, or a fun night out in our social casino and game room. Also featuring a bakery and cafe. We have something special for everyone to enjoy.

<https://circa1898.com/>

Knepper's Inn

\$

1986 W Penn Pike

New Ringgold, Schuylkill County 17960

570-386-5595

Monday & Tuesday CLOSED

Wednesday: 4:00pm – 8:30pm

Thur-Fri: 12:00pm – 8:30pm

Saturday: 12:00pm – 8:30pm

Sunday: 7:00am – 8:00pm

We are a family owned restaurant located right off 309 nine miles south of Tamaqua and roughly nine miles north of the New Tripoli area. Knepper's has been a hub for good food and great drinks since the 1940's. However, in the last year it was bought and is running under new management. While working closely with our staff we strive to bring you the best service and food!

<https://www.kneppersfamilyrestaurant.com>

Bonnie & Clyde Pub & Grille

\$\$

111 N 1st St,

Lehigh, PA 18235

(610) 377-0777

Mon-Thurs: 11:30am – 9:00pm

Fri-Sun: 11:30am – 10:00pm

Boasts an intimate 1930's atmosphere. We offer 36 drafts, over 70 craft bottles, specialty cocktails, and a wide variety of local and imported wine. We offer a full menu with plenty to choose from. To die for burgers, killer entrees, vegetarian dishes, outstanding seafood, as well as specialty desserts made in house daily. Bonnie & Clyde strives to offer outstanding service in a comfortable, casual atmosphere.

<https://www.bonnieandclydepubandgrill.com>

DiMaio's Mustard Seed

\$\$

110 East Market Street

Orwigsburg, PA 17961

(570) 366-3601

Sun-Thurs: 10:30 am – 9:30 pm

Fri-Sat: 10:30 am – 10:00 pm

Located in Orwigsburg, Pennsylvania, DiMaio's Mustard Seed has been a staple of the town's authentic Italian-American cuisine. DiMaio's Mustard Seed opened October 3, 2005. Since then, owners Giacomo & Leslie DiMaio along with family with Chef Brandon Naus, have been serving quality interpretations of authentic Italian cuisine and adding their own bit of Sicilian flare into the dishes.

<https://www.dimaioismustardseed.com/>

Dutch Kitchen

\$

433 South Lehigh Avenue

Frackville, PA 17931

(570) 874-3265

Everyday: 7:00am – 8:00pm

Welcome to The Famous Dutch Kitchen Restaurant. Enjoy our diner style seating, Experience family style dining, and enjoy menu items featured in the book, 'Roadfood'!

<https://www.dutchkitchen.com>

The Wooden Keg Tavern

\$\$

1 Caroline Ave,

St Clair, PA 17970

(570) 429-1909

Mon-Fri: 3:00pm – 9:00pm

Sat-Sun: 12:00pm – 9:00pm

1860s site for a vintage-style Irish sports tavern with pub grub & a prohibition-era tunnel room.

<https://woodenkegtavern.com>



The McKeansburg Hotel Bar & Restaurant

\$\$

1776 Chestnut St.
New Ringgold, PA, 17960
570-386-5595

Tuesday & Wednesday: CLOSED
Mon, Thurs-Fri: 3:00 pm – 10:00 pm
Saturday: 12:00 pm – 10:00 pm
Sunday: 7:00 am – 8:00 pm

We are located in McKeansburg on state Route 443 a few miles east of Orwigsburg in Schuylkill County. We are the McKeansburg Hotel, Bar and Restaurant. This hotel has been here since 1890, serving the public with food, beverages and lodging. Although lodging is no longer provided, we feel the beverages and food are the best ever offered in both quality, variety and value.

<https://www.mckeansburghotel.com/>

Starbucks

1241 Blakeslee Blvd.
Lehighton, PA 18235
(570) 386-4146
Open Everyday: 6:00 am – 7:00 pm

Starbucks is a global coffeehouse chain known for its premium coffee, handcrafted beverages, and cozy atmosphere. With a commitment to ethically sourced ingredients, it offers a variety of drinks, food options, and seasonal specialties. Starbucks also focuses on sustainability and community impact, making it a popular destination for coffee lovers worldwide.

<https://www.starbucks.com/>

Wineries & Breweries

Stoker's Brewing Company

36 Mauch Chunk Street
Tamaqua, PA 18252
(570) 668-2515
Sun-Thurs: CLOSED
Friday: 4:00pm – 10:00pm
Saturday: 2:00pm – 10:00pm

Our nano-brewery and biergarten is conveniently located at 36 Mauch Chunk Street (Route 309 N) Tamaqua, Pennsylvania. We offer 14 distinctive styles of handcrafted beers brewed on-site on both a regular and seasonal basis. Feel free to bring your own food with you or order in from local restaurants; menus are available on-site.

<https://stokersbrewingcompany.com>

Fieldwood Winery

1083 Schuylkill Mountain Rd,
Schuylkill Haven, PA 17972
(570) 624-9288
Sun-Thurs: CLOSED
Fri-Sat: 12:00pm – 5:00pm

Fieldwood is your local, small batch winery. We use grapes and other fruits from around the world and from local vineyards to produce small batches (less than 60 gallons) of hand crafted wine. All fermentation and storage are done in stainless steel tanks for a clean, brilliant, and polished flavor. We feature a large variety from dry to sweet, along with some tasty fruit wines. Come discover the wines you'll love!

<https://fieldwoodwinery.com>

Galen Glen Vineyard and Winery

255 Winter Mountain Dr,
Andreas, PA 18211
(570) 386-3682
Mon-Weds: CLOSED
Thurs-Sun: 12:00pm – 5:00pm

They say true chemistry occurs when you combine passion with skill. Our passion for world-class wine, decades of chemistry and engineering, and seven generations of growing know-how has intersected in a combustion we call Galen Glen. Our wines are internationally renowned, internally celebrated, and individually bottled for you to enjoy.

<https://www.galenglen.com>

King Cole Winery

152 Kiehner Rd,
Schuylkill Haven, PA 17972
(570) 691-8542
Mon-Weds: CLOSED
Thurs-Sun: 12:00pm – 5:00pm

We are a very unique winery with very different flavors all handmade blood orange, raspberry, watermelon, mango, coffee wine just to mention a few stop in for a tasting and enjoy our wines.

<https://kingcolewinery.org>

Long Trout Winery

84 Fork Mountain Rd,
Auburn, PA 17922
(570) 366-6443

Thurs-Fri: CLOSED
Saturday: 12:00pm – 6:00pm
Sunday: 12:00pm – 5:00pm
Mon-Tues: CLOSED
Wed: 6:00pm – 9:00pm

Peace signs, tie dyes, and bell bottoms, flower rings of baby's breath and daisies, headbands and halter tops, yellow subs and blue meanies, beads and weeds, 60's music vied in smoldering incense and clean, crisp homemade style wines like everyone's Grandpa used to make. These familiar images capture the essence of Long Trout Winery. An unequalled slice of time and tradition where "different" is what it's all about. So don't make a fuss, get on the hippie bus and experience a perfect blend of farout wines and furry friends at PA's unique bohemian wine boutique!

<https://longtroutwinery.com/site/>

Revere Brewery

1313 E Broad St,
Tamaqua, PA 18252
(570) 582-0103
Mon-Weds: CLOSED
Thursday: 5:00pm – 9:00pm
Friday: 5:00pm – 10:00pm
Saturday: 3:00pm – 10:00pm
Sunday: 1:00pm – 4:00pm

Since 2018, we've been so proud to share our delicious beers with the Tamaqua community. Our porters and stouts are sure to satisfy -- with 12 rotating taps, we always have something for everyone. Small-batch brewing allows us the flexibility to achieve the best, freshest craft beers for our patrons. This is a veteran-owned, locally operated brewery. We pride ourselves on serving our creations! Stop in and let's toast to the good life.

<https://www.facebook.com/RevereBrewery/>

Benigna's Creek Winery

1585 Ridge Rd,
Klingstown, PA 17941
(570) 425-3090
Mon-Tues: CLOSED
Weds-Sat: 11:00am – 5:00pm
Sunday: 1:00pm – 4:00pm

"Stick to what you know," and at Benigna's Creek we know fruit wines. Whether it's grapes, blueberries, strawberries, blackberries or peaches, our wines are packed with the bold fruit flavors you love.

<https://bcwinery.com>

Stone Mountain Wine Cellars

1615 Panther Valley Rd,
Pine Grove, PA 17963
(570) 739-4418
Mon-Fri: 9:00am – 6:00pm
Saturday: 9:00am – 4:00pm
Sunday: 11:00am – 4:00pm

Owners Annie, Kent, & Karl Heffner invite you to visit their farm winery and vineyards in the beautiful Stone Mountains of Central Pennsylvania. Stop by our farm store and tasting room to sample our award winning wines and browse our fine fresh produce.

<https://www.jerseyacresfarms.com>

Blue Ridge Estate Vineyard & Winery

239 Blue Ridge Road
Saylorsburg, PA 18353
(610) 895-4205
Mon-Wed: 11:00 am – 6:00 pm
Thurs, Sun: 11:00 am – 8:00 pm
Fri-Sat: 11:00 am – 9:00 pm

Nestled on top a hill overlooking the Vineyards the 17,000 SQFT wine tasting facility is state of the art. There's a full wrap around deck so you can take in the entire vineyards and the rolling Pocono Mountains. You'll enjoy wine tasting at beautifully crafted 36' wine bar. Relax with friends, enjoy a glass of wine, take in the scenery. Feel free to take walk in the vineyards

<https://www.blueridgeestatewinery.com>

Radical Wine Company

511 Mahoning Dr E.
Lehighton, PA 18235
(610) 365-7969
Mon-Wed: CLOSED
Thurs, Sat: 12:00 pm – 6:00 pm
Friday: 12:00 pm – 8:00 pm
Sunday: 12:00 pm – 4:00 pm

We are an Urban Style Winery similar to a craft brewery. We source our ingredients from vineyards in premium regions around the world. We then craft limited batch wines at our urban location in Lehighton, Pennsylvania. When you visit expect a fun, laid back vibe with a little bit for everyone, Draft Beer, Mixed Drink Specials, Sangrias, Wine Slushies and even Wine Infused Soft Serve Ice Cream!

<https://www.radicalwinecompany.com>



Eight Oaks Farm Distillery

7189 PA-309
New Tripoli, PA 18066
(484) 387-5287

Mon-Wed: CLOSED
Thursday: 4:00 pm – 8:00 pm
Friday: 3:00 pm – 8:00 pm
Saturday: 2:00 pm – 8:00 pm
Sunday: 11:00 am – 5:00 pm

Eight Oaks Farm Distillery is veteran-owned and family-run. We are located in the rolling farmlands of the Lehigh Valley in Pennsylvania. We grow all our own grains, including corn, wheat, rye, and barley to craft a wide range of award-winning spirits, like Bourbon, Rye Whiskey, Vodka, and Gin.

<https://eighthoaksdistillery.com>

Big Creek Vineyard & Winery

Sun-Thurs: 12:00 pm – 5:00 pm
Fri-Sat: 12:00 pm – 7:00 pm

A peaceful vineyard in the Pocono Mountains of Pennsylvania. Our Shoppe sells Wine by the glass, bottle sales, and appetizers featuring locally made cheese, meats, jams, and bread

<https://www.bigcreekvineyard.com>

Winery:

120 Keller Road
Kunkletown, PA 19058
(610) 681-3959

<https://www.facebook.com/BigCreekVineyard/>

Shoppe:

41 Susquehanna Street
Jim Thorpe, PA 18229

(570) 325-8138

<https://www.facebook.com/bigcreekvineyardJT/>

To explore more local craft beverage locations, visit the following link: <https://schuylkill.org/craft-beverage-trail/>

Health & Wellness

Alchemy Lounge

450 Interchange Rd. Suite 104
Lehighton, PA 18235
(610) 379-4297

Tues-Sat: 10:00am – 6:00pm
Sunday: 12:00pm – 5:00pm
Appointments Preferred

Alchemy Lounge is a sanctuary of light, serenity, and well-being, dedicated to personal and collective transformation. Immerse yourself in the revitalizing practices of salt therapy, state-of-the-art red light therapy, infrared sauna, and holistic modalities like massage, acupuncture, Reiki, and sound vibration therapy

<https://www.alchemyloungepa.com/>

Seventh Moon Wellness Spa

701 Bridge St.
Lehighton, PA 18235
(610) 377-3002
BY APPOINTMENT ONLY

The Seventh Moon Wellness Spa in Lehighton, PA, offers a holistic approach to wellness with services like massages, skincare, salon treatments, and energy work. They also provide yoga and meditation classes, along with special spa packages and workshops. The spa focuses on creating a relaxing environment to promote balanced living and well-being.

<https://www.theseventhmoon.com/>

Jim Thorpe Massage & Wellness Spa

69 Broadway
Jim Thorpe, PA 18229
(570) 995-3025
Mon-Fri: 9:00am – 8:00pm
Sat-Sun: 10:00am – 8:00pm







Jim Thorpe Massage & Wellness Studio offers a range of therapeutic services including massage, skincare, body treatments, and energy work. The studio focuses on relaxation and rejuvenation, providing personalized treatments for individuals and couples. It also hosts private events and group sessions, promoting overall well-being in a tranquil environment.

<https://www.jimthorpemassage.com/>



Tag Us!

LET'S CONNECT!

-  The Village at Houser's Crossing
-  HousersCrossingTamaquaPA
-  @village_at_housers_crossing
-  @HousersCrossing
-  HousersCrossing.com
-  The Village at Houser's Crossing



Book directly through the website to save by scanning the QR Code.

Scan the QR code a leave a Google review to share your experience.

