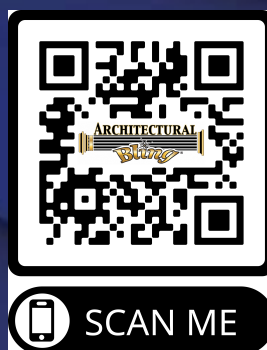




LuminoGraf

INNOVATIVE | PRACTICAL | BEAUTIFUL

Decorative Panels Collections Overview Catalog



SCAN ME

DECOWALL is Luminograf's most recent technology for opaque decorative panels, made of eco-certified 100% recycled wood fibre.

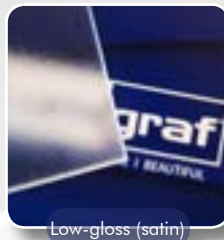
- ◆ Is a premium quality medium density fibreboard (MDF) panel, manufactured for the environmental specifications required for today's market.
- ◆ These formats are designed by a mechanical lamination process and hand-assembled by our workshop specialists.
- ◆ Can be easily fabricated by woodworkers and cabinet makers with common woodworking tools.
- ◆ This material has been specifically designed for wall applications, it can be glued and joined.
- ◆ Nonporous and resistant to bacterial growth, Stain resistant and easy to clean
- ◆ They are mostly recommended for vertical applications



DECOWALL suits COMMERCIAL and RESIDENTIAL applications such as:

- ◆ wall panelling
- ◆ Bar or Reception counters
- ◆ Any other surfacing applications
- ◆ Backsplashes
- ◆ Retail Displays

Available with all patterns from Luminograf™ current collections



FINISH:
2 STYLES

Pattern Enhancement
Please refer to sample for color reference

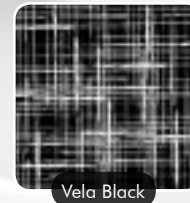
C-TRU panels are a semi-transparent material featuring a translucent pattern. Light permeable and maintains privacy. Product features modern, clean designs.

- ◆ Customizable pattern available**
- ◆ Easy to clean and to maintain
- ◆ Functional and on-trend
- ◆ Short lead times

C-TRU panels are mainly used in COMMERCIAL applications, such as:

- ◆ Architectural & Modular Wall Systems
- ◆ Freestanding Systems and Mobile Furniture
- ◆ Acrylic Components
- ◆ Door Inserts
- ◆ Lighting Design

Currently available in 3 colors and over 16 patterns including:



Dimension: 4' x 8' (1220mm x 2440mm) / 1/16" (1.6mm), 1/8" (3.2mm), 3/16" (4.8mm), 1/4" (6.4mm), 3/8" (9.5mm)
Finish: Front: Low-Gloss (Satin) / Back: Glossy
Composition: Acrylic or Class "A" fire-rated polycarbonate, eco-solvent ink, vinyl
Important Details: C-Thru panels are designed for use with framing hard-

LUMI-9 is Luminograf's signature series. Lumi-9 is extremely versatile and features a semi-transparent, laser etched pattern.

- ◆ Currently available in 3 patterns and 15 colors**
- ◆ Made of laser etched polycarbonate
- ◆ Available in Fire Rated "A" polycarbonate panels

LUMI-9 panels can be used in commercial applications, such as:

- ◆ Light Fixtures / lighting design
- ◆ Back-lit feature walls
- ◆ Door inserts and partitions
- ◆ Retail displays
- ◆ Signage
- ◆ Ceiling tiles



**Certain conditions apply, please contact us for details

Dimension: 2' x 8' (610mm x 2440mm) or 4' x 8' (1220mm x 2440mm) (panel will have a seam in the pattern) / 1/16 (1.6mm), 1/8" (3mm), 1/4" (6mm), 3/8" (9.5mm)
Film: 24" wide by up to 250'
Finish: Satin
Composition: Acrylic or Class "A" fire-rated polycarbonate, laser etched polycarbonate
Important Details: Lumi-9 can be used in a wide range of applications. Care must be taken when fabricating (cutting, drilling, edge finishing and gluing), please read instructions carefully.

- ◆ UV resistant and durable
- ◆ High visual impact



Lumigraf's METALLIZED PANELS are unique to Lumigraf and are available four series, each of which features a different visual effect



Zulu White & Gray



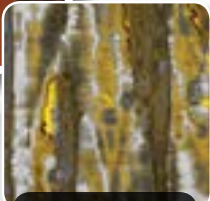
Orion Black/Copper



Andromeda Indigo/Silver



Aquarius Purple/Gold



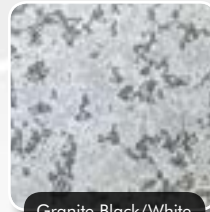
Canyon Silver/Gold



Quarry Gold



Reef Red



Granite Black/White

Dimension: 4' x 8' (1220mm x 2440mm) / 1/16" (1.6mm), 1/8" (3.2mm), 3/16" (4.8mm), 1/4" (6.4mm), 3/8" (9.5mm)
Finish: Glossy or Low-Gloss (Satin)
Composition: Acrylic or Class "A" fire-rated polycarbonate, Eco-Solvent UV resistant ink, metallic film, vinyl
Important Details: Metallized panels are designed for indoor use only. Care must be taken when fabricating (cutting, drilling, edge finishing and gluing), please read instructions carefully

High Brilliance, angular look. Silver, gold or copper
Crystallized



Low Brilliance. Similar to sheet metal
Galvanized

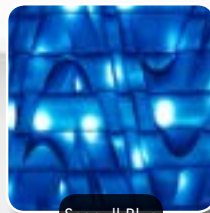
Dimension: 4' x 8' (1220mm x 2440mm) / 1/16" (1.6mm), 1/8" (3.2mm), 3/16" (4.8mm), 1/4" (6.4mm), 3/8" (9.5mm)
Finish: Glossy or Low-Gloss (Satin)
Composition: Acrylic or Class "A" fire-rated polycarbonate, Eco-Solvent UV resistant ink, metallic film, vinyl
Important Details: Metallized panels are designed for indoor use only. Care must be taken when fabricating (cutting, drilling, edge finishing and gluing), please read instructions carefully.

Dimension: 37" x 96" (940mm x 2440mm) / 1/16" (1.6mm), 1/8" (3.2mm), 3/16" (4.8mm), 1/4" (6.4mm), 3/8" (9.5mm)
Finish: Glossy or Low-Gloss (Satin)
Composition: Acrylic or Class "A" fire-rated polycarbonate, Eco-Solvent UV resistant ink, metallic film, vinyl
Important Details: Metallized panels are designed for indoor use only. Care must be taken when fabricating (cutting, drilling, edge finishing and gluing), please read instructions carefully

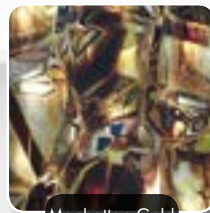
Very High Brilliance, mirrored, 3-Dimensional Look
Reflexions



Gold Mine Gold



Seagull Blue



Manhattan Gold



Burl Amber



Bamboo Red

Linear + Prismatic. Breaks white light into its elemental colors
Rainbow

Dimension: 4' x 8' (1220mm x 2440mm) / 1/16" (1.6mm), 1/8" (3.2mm), 3/16" (4.8mm), 1/4" (6.4mm), 3/8" (9.5mm)
Finish: Glossy or Low-Gloss (Satin)
Composition: Acrylic or Class "A" fire-rated polycarbonate, Eco-Solvent UV resistant ink, metallic film, vinyl
Important Details: Metallized panels are designed for indoor use only. Care must be taken when fabricating (cutting, drilling, edge finishing and gluing), please read instructions carefully.



Bamboo Black & Blue



Bamboo



Hot Chili Amethyst

LUMI-ONYX is Lumigraf's line of resin alabasters, marbles and onyxes. Introduced in 2003, Lumi-Onyx can be used in a variety of applications including lighting design, feature walls, ceiling tiles and more.

- ◆ Available in a variety of finishes and substrates including Fire-Rated 'A' polycarbonate
- ◆ Designed to be backlit but can be used in other vertical applications
- ◆ Lightweight compared to traditional stone
- ◆ Customizable color and pattern



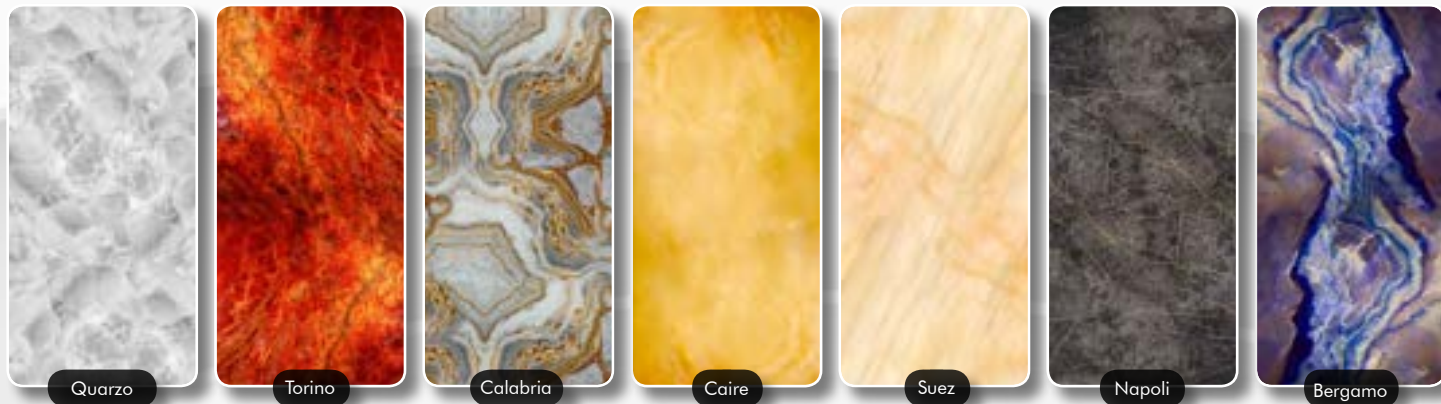
LUMI-ONYX is used for **COMMERCIAL** and **RESIDENTIAL** applications, such as:

- ◆ Light Fixtures
- ◆ Door inserts
- ◆ Feature Walls
- ◆ Bar Fronts
- ◆ Ceiling Tiles
- ◆ Backsplashes
- ◆ Columns
- ◆ Hundreds of other backlit applications



Dimension: 4' x 8' (1220mm x 2440mm) / 1/16" (1.6mm), 1/8" (3.2mm), 3/16" (4.8mm), 1/4" (6.4mm), 3/8" (9.5mm)
Finish: Glossy or Low-Gloss (Satin)
Composition: Acrylic or Class "A" fire-rated polycarbonate, Eco-Solvent UV resistant ink, vinyl
Important Details: Lumi-Onyx is designed for indoor use only.

Over 100 styles*** to choose from including:

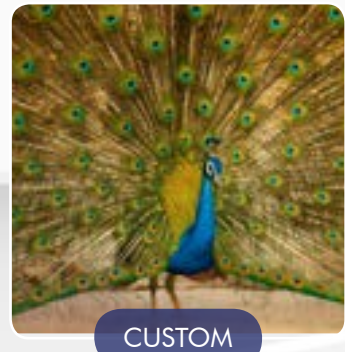
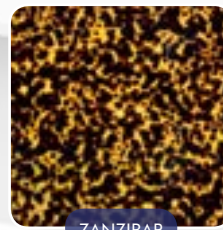
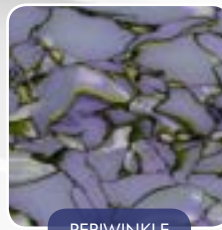
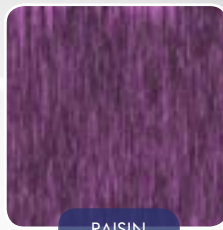


**some exceptions apply; please contact your sales representative for additional information
***please visit our website to view all patterns and colors, samples are available upon request

TEXTURE-ALL is Lumigraf's customized line of translucent decorative panels for backlit applications. These panels can be customized with your **OWN DESIGN** to make your project personalized and unique.

- ◆ Ideal for corporate signage background
- ◆ Wonderful light diffuser, perfect for backlit projects (acrylic and polycarbonate substrates only)
- ◆ Designed to acquire depth and texture when backlit
- ◆ Impact resistant and lightweight
- ◆ Custom colors and graphics can be developed for specific project needs

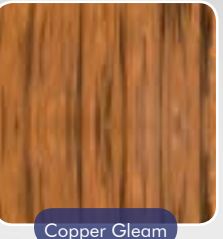
Dimension: 4' x 8' (1220mm x 2440mm) / 1/16" (1.6mm), 1/8" (3.2mm), 3/16" (4.8mm), 1/4" (6.4mm), 3/8" (9.5mm)
Finish: Glossy or Low-Gloss (satin)
Composition: Acrylic or Class "A" fire-rated polycarbonate, Eco-Solvent UV resistant ink, vinyl
Available with mother-of-pearl and metallized finish for more effect option



LUMI-PEARL is Lumigraf's famous Mother-of-Pearl ultra-modern collection, providing depth and richness to any project.

- ◆ Stunning Mother-of-Pearl effect
- ◆ Also available with translucent light diffusing backing
- ◆ Impact resistant and lightweight
- ◆ Stain resistant and easy to clean

Dimension: 24" x 54" panel (610mm x 1372mm) / 1/16" (1.6mm), 1/8" (3.2mm), 3/16" (4.8mm), 1/4" (6.4mm), 3/8" (9.5mm)
Finish: Glossy or Low-Gloss (satin)
Composition: Acrylic or Class "A" fire-rated polycarbonate, Eco-Solvent UV resistant ink, vinyl



TEXTURE-ALL and **LUMI-PEARL** are used for **COMMERCIAL** and **RESIDENTIAL** applications, such as:

- ◆ Light Fixtures
- ◆ Backsplashes
- ◆ Columns
- ◆ Ceiling Tiles
- ◆ Feature Walls
- ◆ Doors inserts
- ◆ Bar Fronts
- ◆ Hundreds of other backlit applications



Architectural Bling



Dallas Design Community

4020 N MacArthur Blvd #122, Irving, TX 75038

214.613.2285 | ArchitecturalBling.com

