



"Architectural Decorative Elements"

NUMETAL™

High Pressure Laminates with
a Real Metal Surface

- Commercial
- Healthcare + Institutional
- Hospitality
- Retail



Architectural Decorative Elements

Architectural Bling is a leading supplier of Architectural Decorative Elements. Headquartered in Plano, Texas since 2013, *Architectural Bling* provides solutions for the hospitality, healthcare and institutional, retail, commercial, and residential markets. Through our commitment to continuous improvement and our strong company values, our goal is to provide superior decorative products, quality customer service, and foster long lasting relationships.

Architectural Bling's MirroFlex products can be specified under the following CSI divisions:

- 074200 – Fusion Unbacked Aluminum Sheets
- 097800 – NuMetal High Pressure Laminates and Fusion Unbacked Aluminum Sheets
- 123600 – NuMetal High Pressure Laminates



SCAN ME

ARCHITECTURAL BLING, INC.

Dallas Design Community

4020 N MacArthur Blvd #122, Irving, TX 75038
214.613.2285 | Txt: 469.406.9222 | ArchitecturalBling.com

ISO 9001:2015 Certified | ISO 14001:2015 Certified



THE FORMULA

BRUSHED STAINLESS RIDGES - 256 PGQ

Contents

Design Beyond the Surface	
What is NuMetal™?	4
Why Choose NuMetal?	6
NuMetal Collection	
A Variety of Real Metal Surfaces	10
Aluminum Collection	12
Copper Collection	16
Unique Art Collection	17
Special Order Items	18
Case Studies	
Airstream	20
Green Valley Grill	22
Koury Corporation	24
Sustainability	26
Artful Metals Collection	
Unbacked Specialty Metals	30
Designs	32
FAQs	34
Quick Reference Guide	36
How to Order	38



THE FORMULA
BRUSHED ALUMINUM MESH - 924 NTZ
FRONT + BACK COVER: TITAN ALUMINUM GUN METAL - 248 BKE



THE FORMULA
AQUA POLISHED SMOKE - 1014 AQA

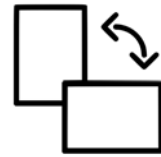
Design Beyond the Surface



Real Metal Surfaces



Embossing, Etching, and Hand Painting



Suitable for a Variety of Applications



Durable Surfaces



High Quality Designs



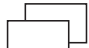
Variety of Options Stocked In-House

What is NuMetal?

NuMetal is a collection of HPLs (High Pressure Laminates) with a real metal surface and phenolic paper backing. **NuMetal** sheets are usually 4' x 8' sheets (4' x 10' available on special order) in Aluminum or Copper; featuring embossing, hand painting, etching, and other innovative techniques to enhance the look of metals. High quality design solutions are its trademark. **NuMetal** is suitable for vertical and light-duty horizontal applications including wall panels, backsplashes, countertops, accent walls, store fixtures, point-of-purchase (POP) displays, and more.

The majority of our products are created for commercial spaces where durability of design reigns supreme. As experts in surfaces that remain abrasion resistant, in addition to performance, **NuMetal** products meet safety and material standards. **Architectural Bling** distributes **NuMetal** to hospitality, healthcare and institutional, retail, and commercial design markets.

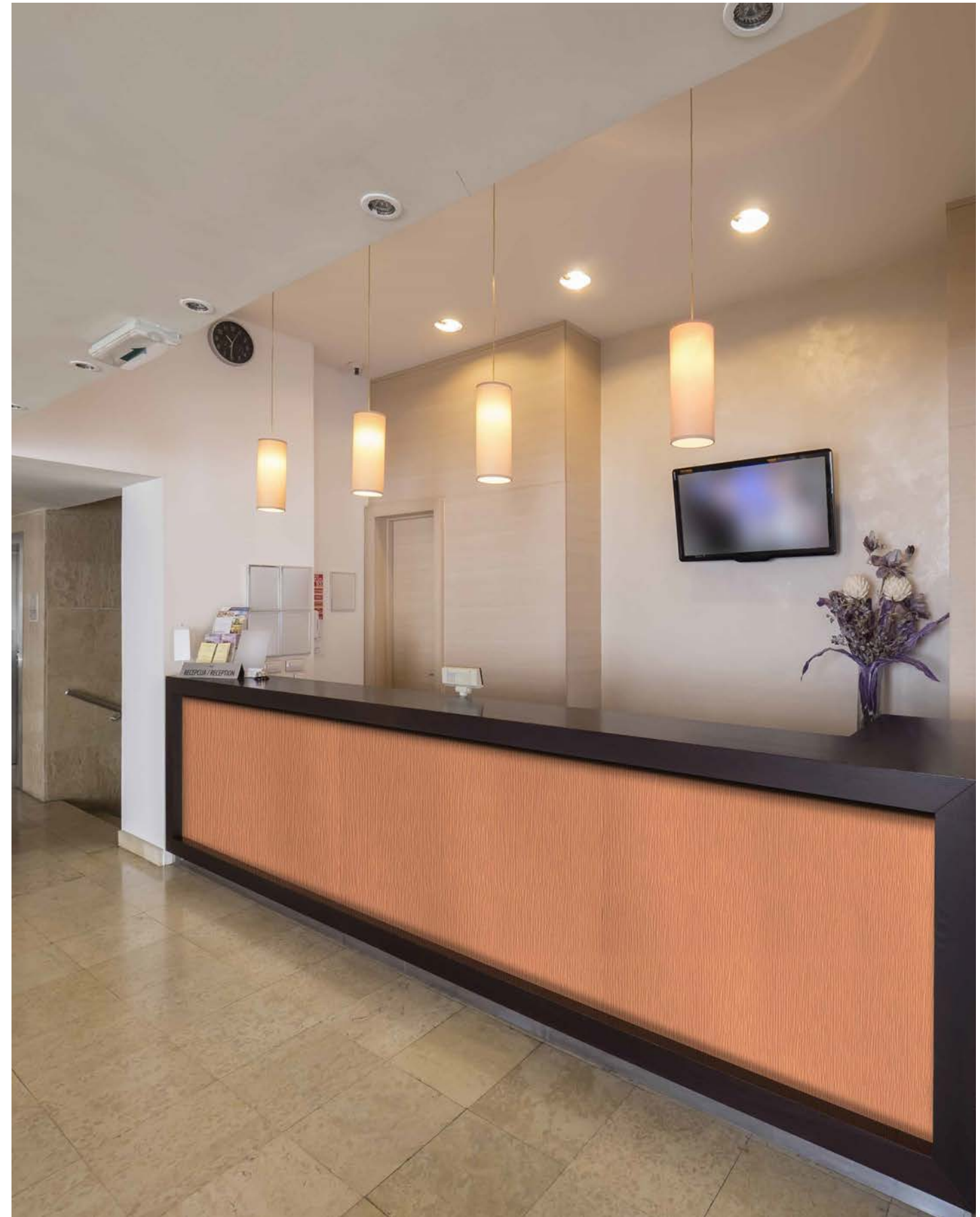
Look for The Formula Design + Finish = NuMetal

 Items Shown as Concept (If Applicable)

THE FORMULA

WATERFALL ROSE GOLD - 212 HM5

(Pictured Right)  Product Name (Design + Finish) Product Number



Design Beyond the Surface

Why Choose NuMetal? Solving Your Design Needs

1. HPLs (High Pressure Laminates) with Real Metal Surfaces

Available in real aluminum and copper surfaces with a phenolic paper backing. Like other HPLs, counterbalancing is required to prevent warping of the substrate.

2. High Quality, Handmade Designs

NuMetal offers design flexibility and is available as flat sheets or with a combination of embossed designs and a finish. The items shown on pages 12-17 are available in 4' x 8' and stocked. We have special order requirements for 4' x 10' size.

3. Suitable for a Variety of Applications

NuMetal is suitable for a variety of vertical and light-duty horizontal applications including wall panels, backsplashes, countertops, accent walls, store fixtures, point-of-purchase (POP) displays, and more.

4. Protective Coating for Durable Surfaces

Most NuMetal products are coated with a lacquer to ensure durability and abrasion resistance. Polished finishes are anodized and will not tarnish. All NuMetal products are also covered with a clear peel off masking to protect the finish. This masking should be left on during fabrication to avoid damaging the surface.

5. Special Order Items

Many other design and finish combinations are available for special order. See pages 18-19 for special order instructions and be sure to contact your Customer Service Representative for more information.

6. Eco-Friendly Options Available

NuMetal is made from pre-consumer materials that are phenol-free and CO2 neutral. The core is made of 100% biological secondary components obtained from renewable resources and is fully recyclable.

7. Low Minimum Order Quantities


Whether you need one sheet for a finishing touch or 100 for your project, we've got you covered. Stocked items are ready to ship within 1-2 weeks.

8. Shipped to You from an ISO Certified Facility


NuMetal is ISO Certified which enables us to have the "hands on" control necessary to maintain the high standards customers expect from us. Your NuMetal sheets will be thoroughly inspected by our Quality Control Team before we ship your order.

Features

Real Metal Surfaces 

Embossing, Etching, and Hand Painting Techniques 

Suitable for a Variety of Applications 

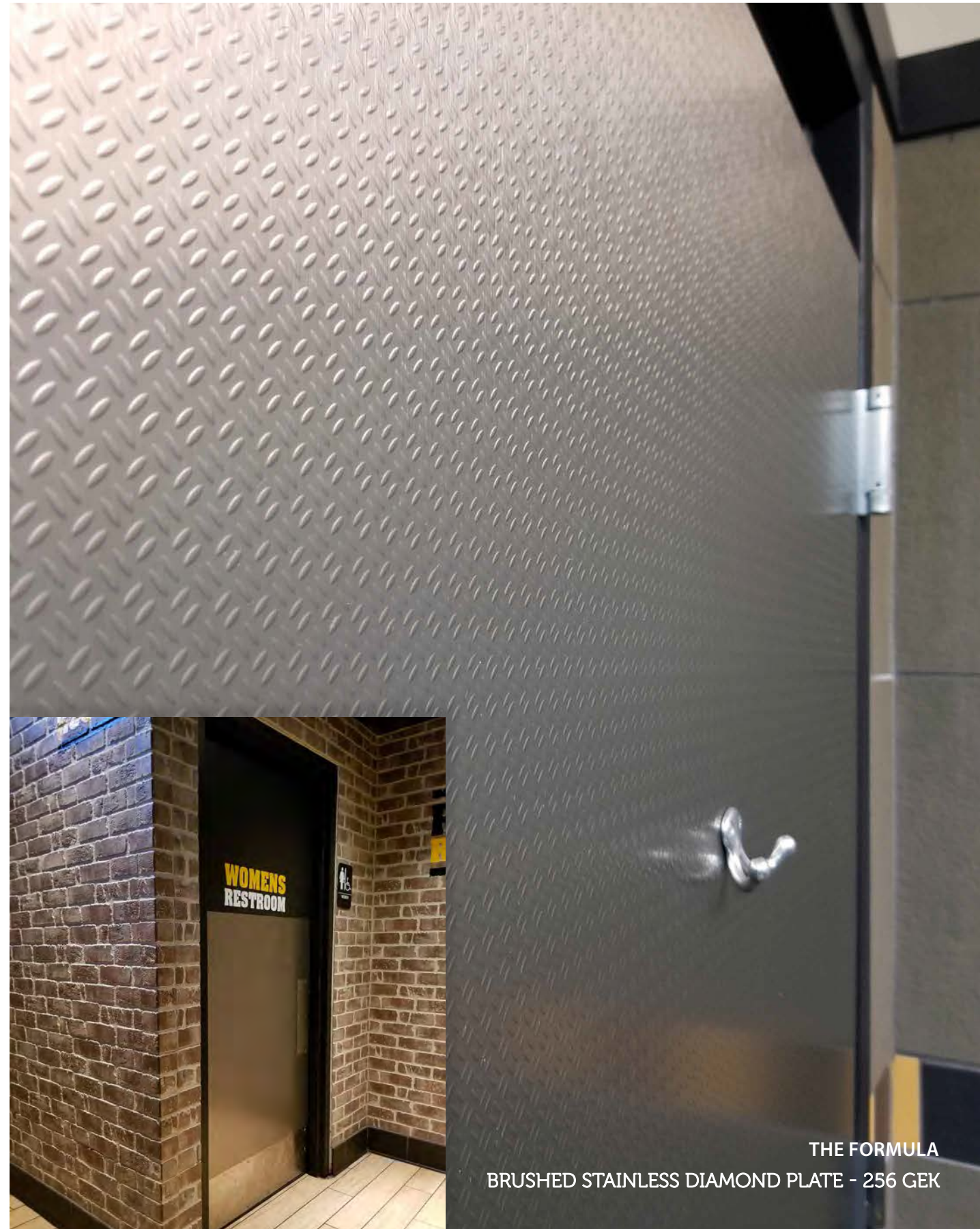
Counterbalancing Required for HPLs 

Abrasion Resistant 

Easy to Clean Surface 

Class A Fire Rated Options Available 

Protective Coat Added to Most NuMetal Products 



NUMETAL COLLECTION

Aluminum Copper
Unique Art
Special Order Items



NuMetal Collection

Choose from a Variety of Real Metal Surfaces

With dozens of options to choose from, **NuMetal** is the perfect high-end solution for your application that can be used as wall panels, backsplashes, countertops, accent walls, point-of-purchase (POP) displays, store fixtures, and more. We can help you find which one is best for your project!

Aluminum Collection

All Aluminum finishes are available in flat sheets or with embossed designs added. Most finishes are lacquered for abrasion resistance. The polished finishes are anodized.

Copper Collection

Copper laminates, with selected popular embossed designs, are lacquered and come with clear protective film for ease in processing.

Unique Art Collection

As their name implies, the Unique Art Collection is truly a unique work-of-art that offers rich colors and materials in their design. They are hand painted by artists using techniques that allow for repeatability. The artistic value and nuances of hand painting are evident when using multiple sheets. As a result, it should be noted that slight differences will be seen from sheet to sheet. Protected with a high-quality lacquer process to ensure durability, these laminates can be used in both low- and high-traffic areas.

NuMetal offers design flexibility and is available as flat sheets or with a combination of embossed designs and a finish. The items shown on the following pages are stocked in-house. However, many other combinations are available for special order.

Features

- Real Metal Surfaces 
- Embossing, Etching, and Hand Painting Techniques 
- Suitable for a Variety of Applications 
- Counterbalancing Required for HPLs 
- Abrasion Resistant 
- Easy to Clean Surface 
- Class A Fire Rated Options Available 
- Protective Coat Added to Most NuMetal Products 

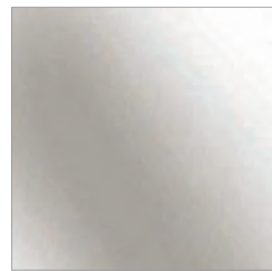


THE FORMULA
ANTIQUE PEWTER REEDS - 490 PTK

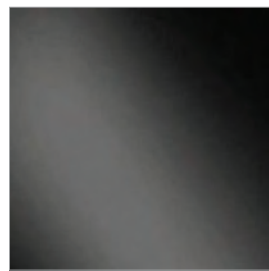
Aluminum

View the entire NuMetal Collection and Order Samples 

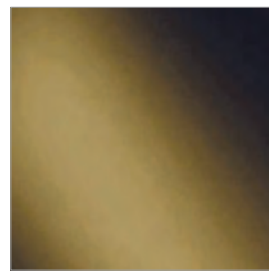
All Aluminum finishes are available in flat sheets or with embossed designs added to the finish. Most finishes are lacquered for abrasion resistance. The polished finishes are anodized and will not tarnish.



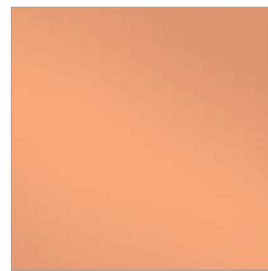
**Polished
Aluminum 904**



**Polished
Smoke 1014**



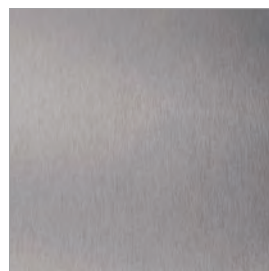
**Polished Brass
914**



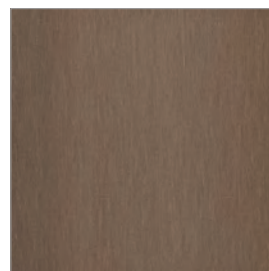
**Rose Gold
212**



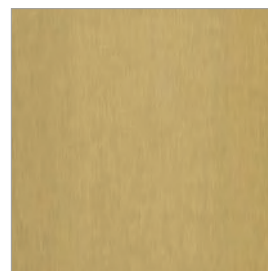
**Brushed
Aluminum 245**



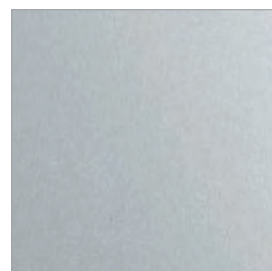
**Brushed
Stainless 256G**



**Brushed
Bronze 944**



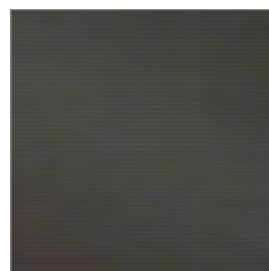
**Brushed Brass
934**



**Aluminum
Mill 204**



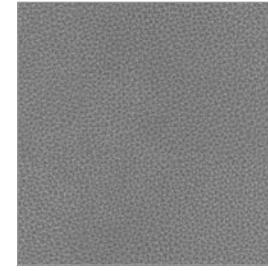
**Aluminum Gun
Metal 248**



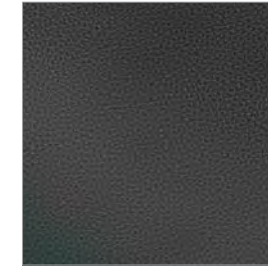
**Gun Metal
Mill 603/248**



**Brushed Aluminum
Fine Hammered
924 HAM**



**Neptune Brushed
Aluminum
924 NEP**



**Neptune
Polished Smoke
1014 NEP**



**Neptune Rose
Gold 212 NEP**



**Corrugated
Brushed Aluminum
603/924**



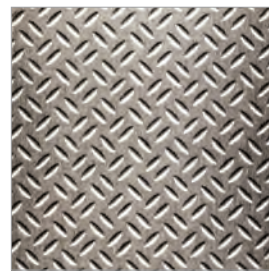
**Corrugated
Brushed Stainless
Steel 603/256**



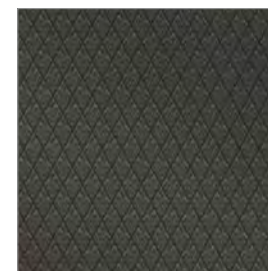
**Corrugated Mill
Aluminum 603/209**



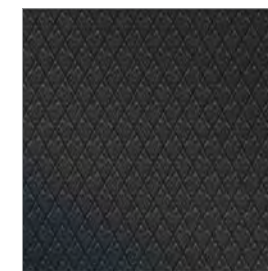
**Brushed Aluminum
Diamond Plate 924
GEK**



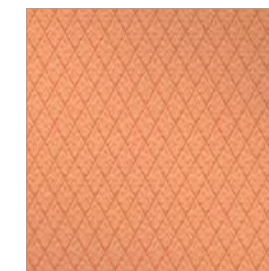
**Brushed Stainless
Diamond Plate 256
GEK**



**Diamond Mill
Gun Metal
248 DIA**



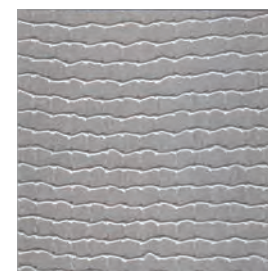
**Diamond
Polished Smoke
1014 DIA**



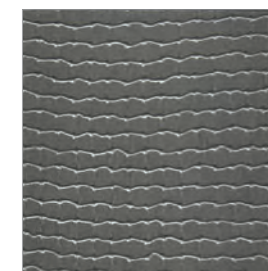
**Diamond Rose
Gold 212 DIA**



**Titan Aluminum
Gun Metal
248 BKE**



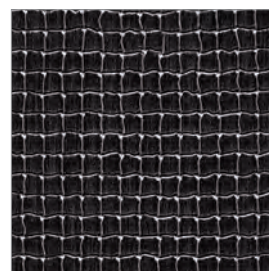
**Brushed
Aluminum Mesh
924 NTZ**



**Brushed
Stainless Mesh
256 NTZ**



**Black Mesh
11 NTZ**



**Antique
Pewter Mesh
490 NTZ**

Aluminum

View the entire NuMetal Collection and Order Samples 



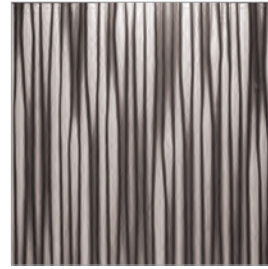
**Brushed
Aluminum Ridges**
924 PGQ



**Brushed
Stainless Ridges**
256 PGQ



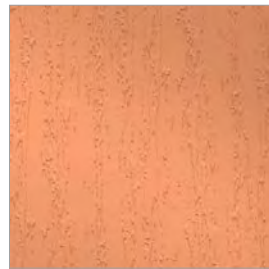
**Brushed
Stainless Reeds**
256 PTK



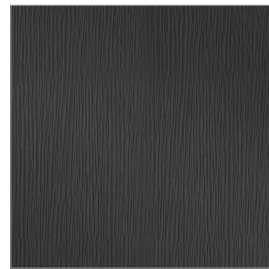
**Antique
Pewter Reeds**
490 PTK



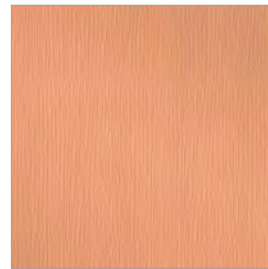
**Aqua Polished
Smoke 1014 AQA**



**Aqua Rose
Gold 212 AQA**



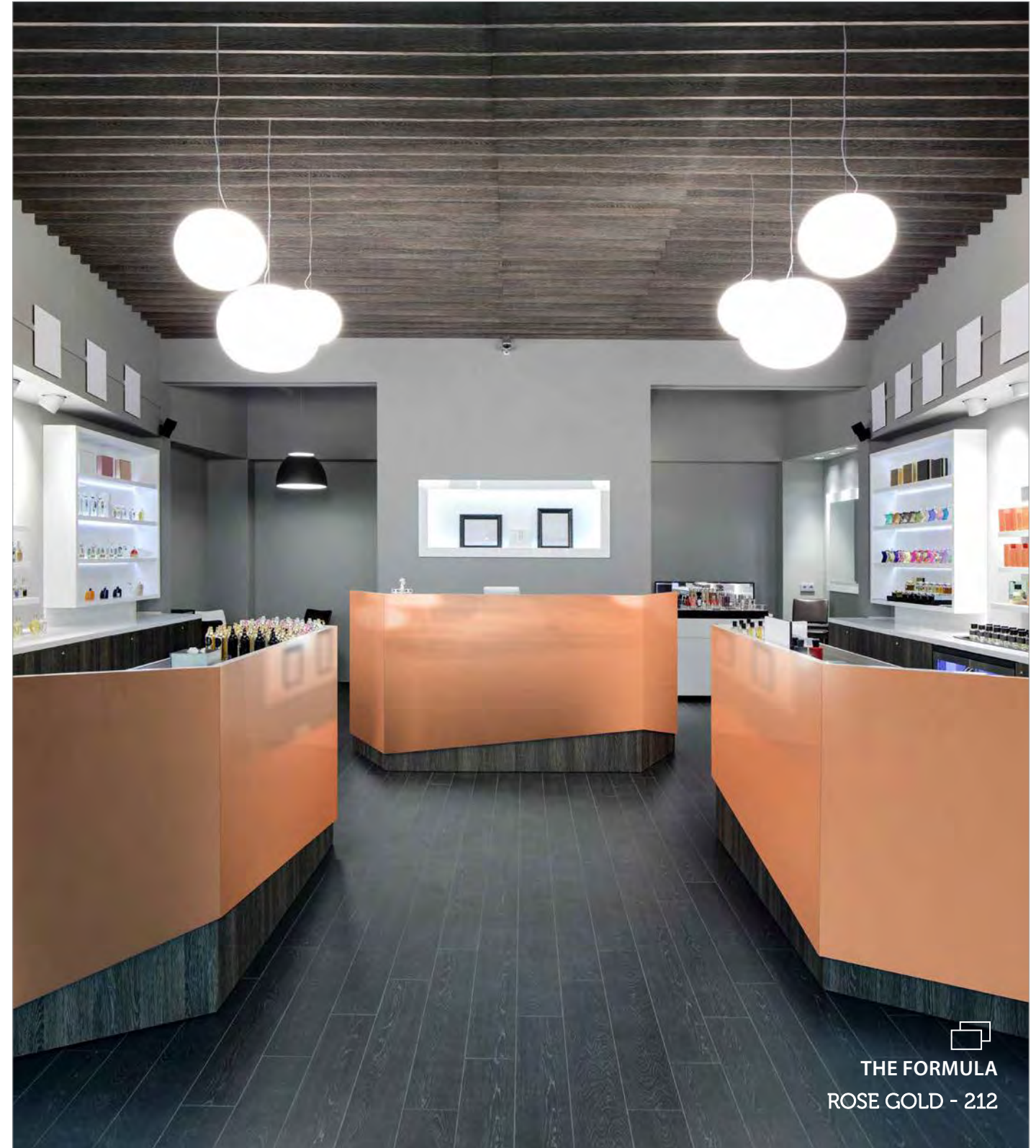
**Waterfall Aluminum
Gun Metal**
248 HM5



**Waterfall Rose
Gold 212 HM5**



**Aluminum
Rondo 202 RON**



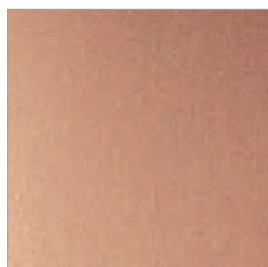
THE FORMULA
ROSE GOLD - 212

Copper & Unique Art

View the entire NuMetal Collection and Order Samples 

Copper laminates, with selected popular embossed designs, are lacquered and come with clear protective film for ease in processing. Available as flat sheets or with embossed designs.

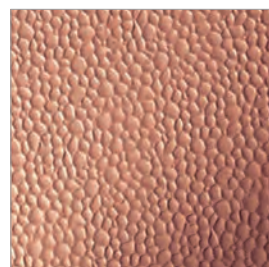
The Unique Art Collection offers rich colors, hand painting techniques, and materials in their design. As a result, slight differences will be seen from sheet to sheet. Protected with a high-quality lacquer to ensure durability.



Matte Copper
C400



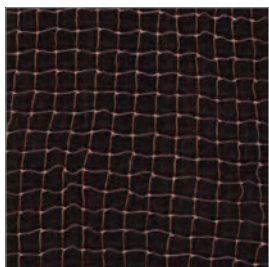
Fine Hammered Copper
C471



Hammered Copper
C473



Antique Fine Hammered Copper
C462



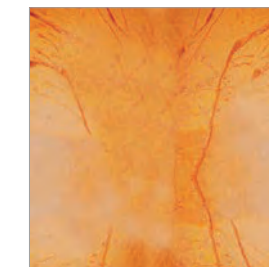
Antique Copper Mesh
401 NTZ



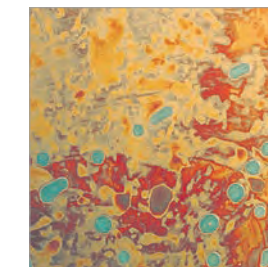
Antique Copper Ore
C431



Patina Autumn Leaves
C421



Patina Onyx
C412



Patina Malchit
C414

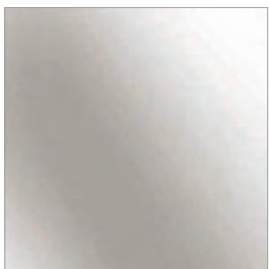


Madrid
CA5

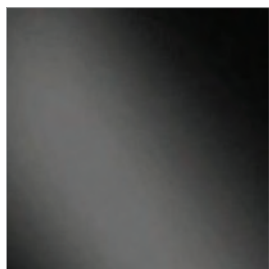
Special Order Items

Architectural Bling carries a large variety of NuMetal products *Ready-To-Ship*. Many other design and finish combinations are available for special order. Special orders require a 10-15 sheet minimum. Want to choose your own Formula? Create your own NuMetal Formula in just 3 easy steps (shown below).

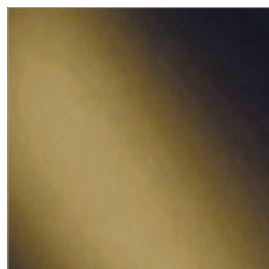
1 Step 1: Choose a finish.



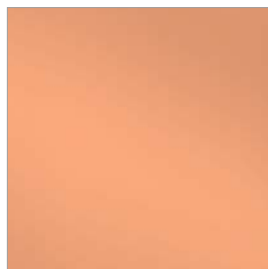
Polished Aluminum 904



Polished Smoke 1014



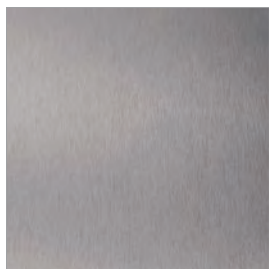
Polished Brass 914



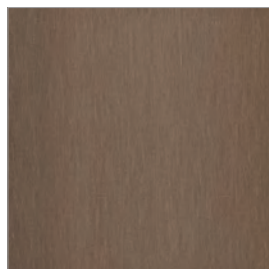
Rose Gold 212



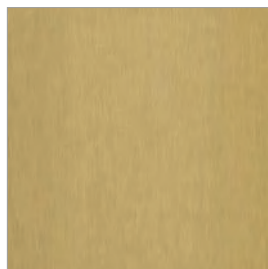
Brushed Aluminum 245



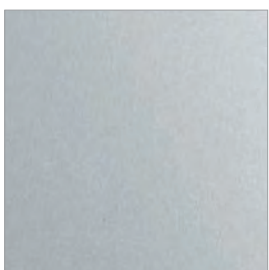
Brushed Stainless 256G



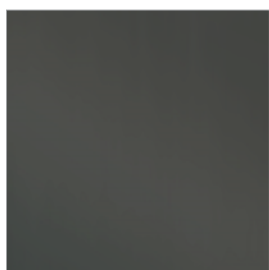
Brushed Bronze 944



Brushed Brass 934

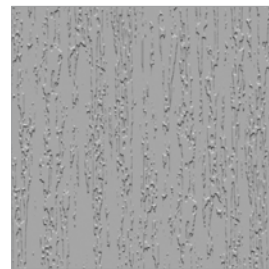


Aluminum Mill 204



Aluminum Gun Metal 248

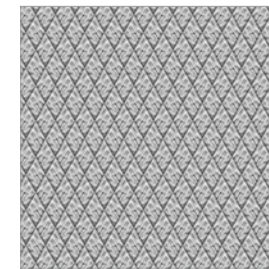
2 Step 2: Choose an embossed design.



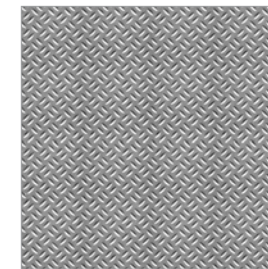
Aqua¹ AQA



Corrugated 603



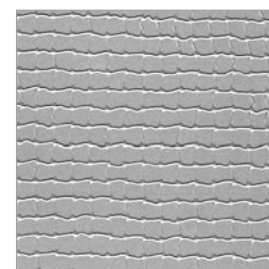
Diamond DIA



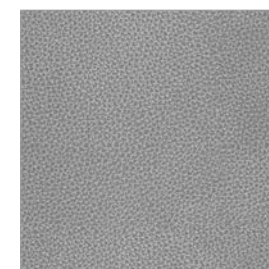
Diamond Plate GEK



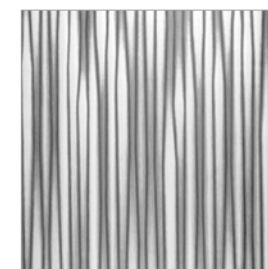
Fine Hammered HAM



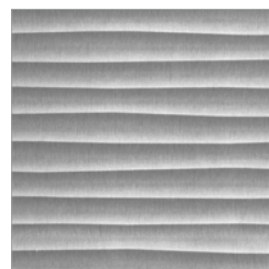
Mesh NTZ



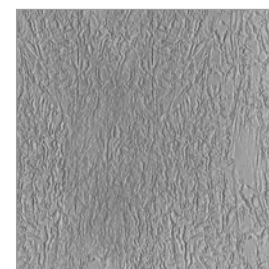
Neptune NEP



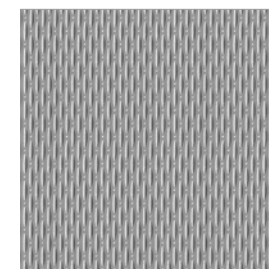
Reeds PTK



Ridges PGQ



Titan² BKE



Waffle WAF



Waterfall HM5

1 Aqua is only available in Polished finishes

2 Titan is only available in Brushed and Mill finishes

3 Step 3: Contact your Customer Service Representative to place your order. Be sure to inquire about additional finishes and designs that may be available for Special Order.



Phone: 214.613.2285
Email: Sales@ArchitecturalBling.com

Case Study



Airstream

CHALLENGE
 PROVIDE A LOW MAINTENANCE SURFACE THAT FITS WITH
 THE STYLE OF AN ICONIC AMERICAN BRAND.

THE FORMULA
 BRUSHED ALUMINUM MESH - 924 NTZ



BRUSHED ALUMINUM MESH
 924 NTZ

THE DETAILS
64 SQ FEET
 In Every "Classic 2015,
 2016, & 2017" Trailer
3,200 SQ FEET
 of Material Per Month
85,000+ SQ FEET
 Specified to Date

BACKGROUND

In 1929, Wally Byam set out to build a sleek, light-weight travel trailer with all the commodities of home. Some 85 years later, his iconic Airstream trailer remains a symbol of American adventure and discovery.

We worked with Airstream and its team of designers on several occasions, with the company specifying Aluminum Mill 204 sheets in its 2014 Sterling trailer.

CHALLENGE

The year 2015 marked a significant remodel of Airstream's flagship product, the Classic trailer, where they once again called on ATI for interior surface solutions because, as one designer put it, "We know they do some pretty cool things."

SOLUTION

In keeping with Airstream's commitment to light-weight design, they selected the Brushed Aluminum Mesh 924 NTZ as the galley kitchen's backsplash and divider wall. Aluminum laminate is a perfect match because of its flexibility and ease of use. Airstream previously used Aluminum Mill 204 as the finishing laminate for the kitchen divider walls.

Our level of service, brand equity and product integrity, as well as their reliability, are just some of the reasons Airstream continues to call upon the family-owned laminate manufacturer, based in Greensboro, NC.

Just like the Classic, **NuMetal** is designed for long-term adventures.



Case Study



Green Valley Grill

CHALLENGE

MAKING A MODERN RESTAURANT FEEL LIKE IT WAS BUILT IN 1920.

THE FORMULA
ANTIQUÉ FINE HAMMERED COPPER - C462



THE DETAILS

DESIGNERS
Don Rives and
Dennis Quaintance

PRODUCTS
NuMetal Antique
Fine Hammered Copper
C462 and Antique
Copper Ore C431

INSTALLATION YEAR
1998



ANTIQUÉ COPPER ORE - C431



BACKGROUND

In the heart of Greensboro, North Carolina, lies a pearl of a hotel known as the O Henry, and its equally charming restaurant, the Green Valley Grill. Unless you're a local, you would never guess that this charming and luxuriously accommodating hotel and restaurant is only 20 years old. One would think that both structures have been standing in this location for more than 100 years. But according to CEO Dennis Quaintance, that is not the case.

In 1998, Quaintance was directly involved in the design of Green Valley Grill along with his late colleague, Don Rives. They wanted the restaurant design to echo warmth and welcome. "We wanted to leave the impression that you are not dining in something new, but rather something ancient," said Quaintance about the initial design concepts. "There is something, a psychological effect, kind of like going home. It's a safe space; it's a comfort place." They went with brick and copper as their staple materials because they felt that, "brick and copper are things that people have lived next to for quite a while."



CHALLENGE

Originally, Quaintance and Rives wanted the hotel to look like it was built in 1870 and the restaurant to feel like a 1920s addition. What many folks don't know is that both structures were actually constructed in 1998. When this design duo decided on copper, Quaintance contacted his friends at our manufacturer's because he was sure if anyone knew laminates and copper, it would be its CEO.

"We went with laminate because it's so durable. It's been 20 years since installation and it's held up great," said Quaintance. "And I'll bet you dollars-to-donuts if you came back in 20 years you'll see these exact same walls. Because materials either wear out or ugly out, and this isn't going to do either one."

SOLUTION

Both copper and brick have endured for ages, and those materials helped the design team achieve a historic mood. They applied Antique Copper Ore C431 in a portion of the restaurant informally referred to as "the Copper Room," and wrapped their large bar with Antique Fine Hammered Copper C462. Both materials are from the NuMetal Copper Collection, which gives the space old-world charm with the durability of modern materials.

Originally, the Copper Room's installation did not have metal joiners, but a couple of years after the restaurant's opening there were humidity problems with the restaurant's HVAC system, which made Quaintance and his team slightly alter the design to address the effects of moisture. "We came in and put in these, what we call joint lines. But that was all retrofit, we didn't have to change anything to do it," said Quaintance. Because of the copper laminate's durability, they had the same laminates that wrap the bar (Antique Fine Hammered Copper C462) installed throughout the restaurant's large kitchen area.

Case Study



BACKGROUND

The Koury Corporation, one of the largest, privately owned, builder/developer companies located in Greensboro, NC, recently relocated their headquarters and decided to give their lobby a fresh new look. They turned to the NuMetal product line for their product of choice.

The reason? Several, actually. As Koury Corporation's interior designer Susan Boswell stated, "When Koury Corporation relocated their offices, they wanted to modernize their look." So, Boswell went with the NuMetal line of hand-painted copper laminates. She selected NuMetal Patina Onyx C412 to beautifully wrap the lobby's reception desk.

CHALLENGE

"Because Koury is a construction company, we wanted to use materials that showcased craftsmanship, but needed the product to be easy to install as well," said Boswell of her choice in material and design.

Boswell faced the challenge of limited space for this reception desk, so the curved desk is not only smartly designed, but it also looks great and adds character to the space. NuMetal can easily wrap around curved surfaces and columns, making it a perfect candidate for this installation. Boswell used NuMetal Patina Onyx C412 from the Unique Art collection to create a simple desk, but one that feels and looks like a work of art.

SOLUTION

"It took about 2 to 3 weeks from the time we decided on the material, the POs, receiving it and later installing it," said Boswell.

The product has been installed for over 2 months now and Boswell boasted that they have had no issues with durability.

When asked if there was anything that they could have done better, Boswell couldn't think of a thing. Boswell beamed at the question saying, "They were great to work with. He brought many samples for us to look at and choose from. We always get the best service!"

THE DETAILS

DESIGNER
Susan Boswell

SALES REP
Lee Averett



UNIQUE ART PATINA ONYX - C412



Sustainability

As an ISO 9001:2015 certified company, our manufacturer is committed to continual improvement through our life-cycle approach to manufacturing and quality product design. From our selection of raw materials and maximization of material yields through their manufacturing processes and end-of-life management strategies, they serve the demands of today's customer while preparing for tomorrow.

Manufacturing capabilities have constantly improved through the years, and their present location is on 6.5 acres centrally located in Greensboro, North Carolina in a 70,000 square foot, state-of-the-art facility.

Since their 2015 Solar Manufacturing Offset Initiative, over 50% of their energy consumption has been offset by renewable solar energy.



Most **NuMetal** HPLs are available for special order, in 100% rapidly renewable, pre-consumer recycled materials that are phenol-free and have formaldehyde emissions of less than 0.01 PPM – one of the lowest in the industry. The core is made of 100% biological secondary components obtained from renewable resources and is fully recyclable.

Through a third party, Development and Test Laboratory for Wood Technology (EPH) in the Institute for Wood Technology in Germany, this product was analyzed and certified according to (EN DIN 717/1) the emission thresholds of CARB's Airborne Toxic Control Measure (ATCM) Phase 1 and 2 for HWPW, PB, and MD.

Quality & Environmental Policy: We are committed to meeting customer expectations with on-time delivery, accurate order processing, and continuous improvements to our organization.

We are continuously investigating alternate methods of minimizing our fall off through "waste-to-profit" networking where our manufacturing waste becomes material for another product.

Our commitments don't end at the door. We understand that our supply chain partners are part of our environmental footprint. We are working with our suppliers to reclaim materials that go into our final product assembly – further minimizing the manufacturing waste that ends up in a landfill.

We are committed to maintaining a healthy work environment for our employees and to protecting our community in which we operate. Through continuous improvement we pledge to:

- Conduct our operations in compliance with all applicable environmental laws and regulations as well as other requirements.
- Review our established targets and objectives.
- Prevent pollution and minimize waste.



2015 Solar
Manufacturing
Offset Initiative

ISO
9001:2015 &
14001:2015
Certified

LEED
Credits Available

OUR JOURNEY TO SUSTAINABILITY

Sustainability is a journey of ongoing
improvement and innovation.



THE FORMULA
BRUSHED ALUMINUM RIDGES - 924 PGQ

ARTFUL METALS COLLECTION

Modern Designs
Colorful Patinas
Rich Oxidized Coppers
Easy to Install
Unbacked Metals



THE FORMULA
FUNKY COLD PATINA + PEBBLE ALUMINUM

Artful Metals Collection

Modern Designs Available on Unbacked Specialty Metals

Our Fusion product line offers the **Artful Metals Collection**. Artful Metals are 15 unique metal and patina-inspired wall panel designs ranging from bright colorful patinas and rich oxidized coppers, to rare and artistic, modern-treated metals.

The **Artful Metals Collection** is available on a variety of 4' x 8' unbacked metal substrates. Our unbacked metal substrates are easy-to-install with no counterbalancing required and offer a wide range of options, including FusionSwirl, Gloss or Matte White, Mill Satin, Aluminum Composite, and our uniquely textured Pebble Aluminum. Special orders for 4' x 10' size have minimum order requirements.

With the **Artful Metals Collection**, you can create a unique decorative surfacing solution for your application that can be used as wall art, decorative wall protection, large-scale murals, wall dividers, and more.


Unbacked Metal Substrates

- FusionSwirl (Hand Swirled, 4' x 10' Sheets)
- Gloss or Matte White (Photorealistic Quality, 4' x 8' Sheets)
- Mill Satin (Smooth, "Raw" Aluminum, 4' x 8' Sheets)
- Pebble Aluminum (Uniquely Textured, 4' x 8' Sheets)
- Aluminum Composite (4' x 8' Sheets)

Features

15 Unique Metal Designs 

Custom Capabilities 

Easy to Install, Unbacked Specialty Metals 

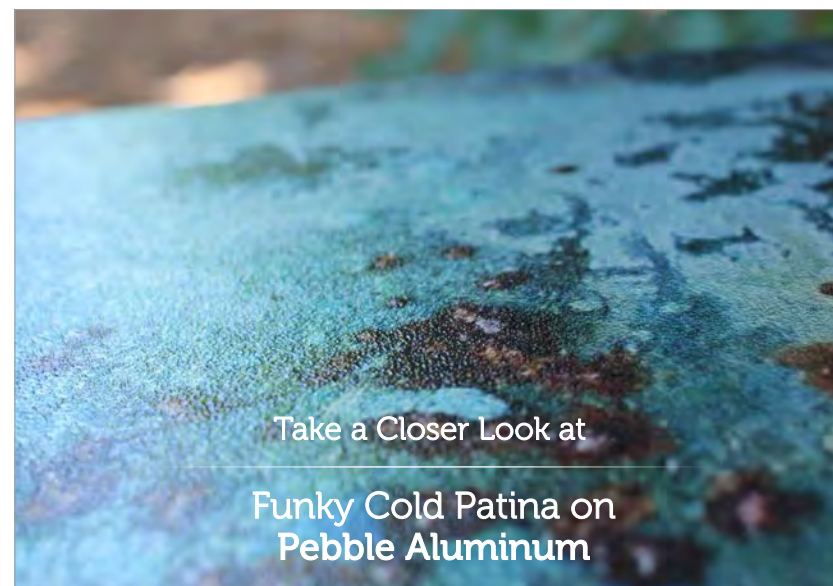
Can be Bent for Some Curved Applications 

Abrasion + Impact Resistant Options Available 

Chemical Resistant 

Stain Resistant 

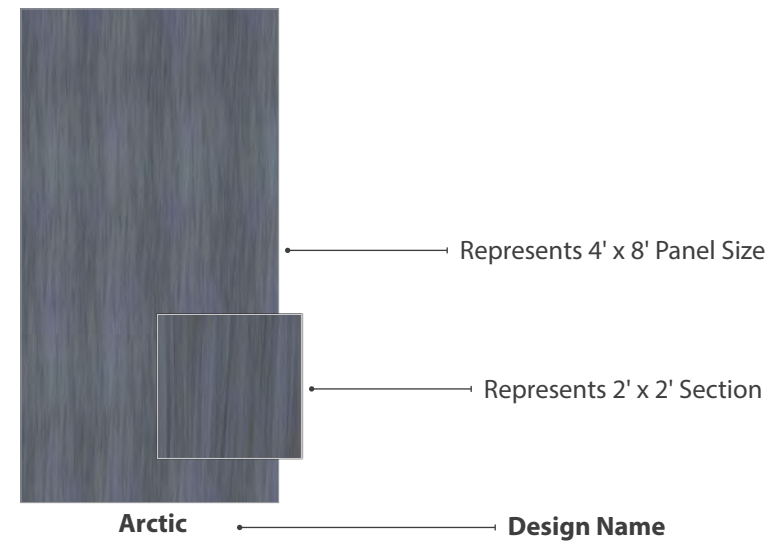
ArmorCoat™ Added to Some Fusion Substrates 



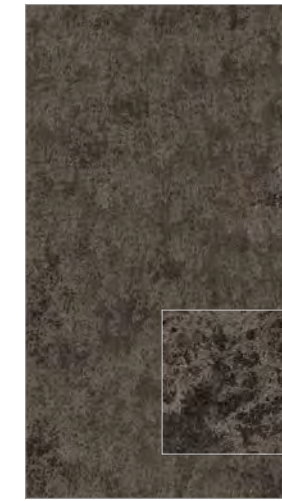
Artful Metals Collection

Be Inspired: 15 Unique Metal and Patina-Inspired Designs

Combine these Artful Metal designs with a variety of 4' x 8' or 4' x 10' unbacked metals to create a custom look for your space.



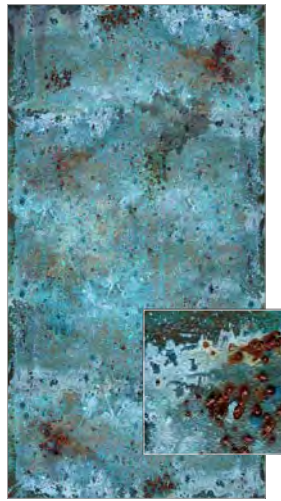
Carats



Castle Black



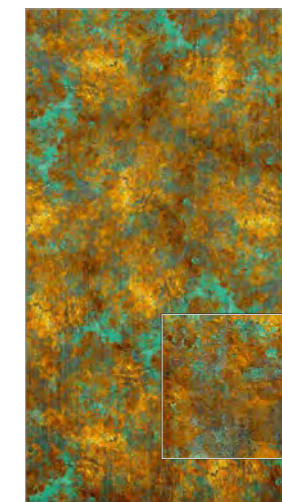
Cu Later



Funky Cold Patina



Gatsby



Native Patina



Raven



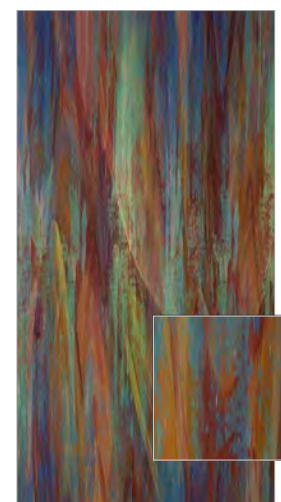
Red Rust



Black Sands



Bourbon Streak



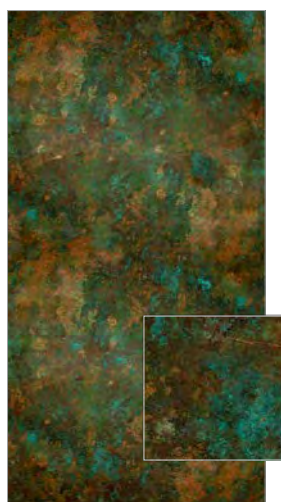
So Impressed



Talisman



Welcome Back Copper



Wicked

Frequently Asked Questions (FAQs)

You've got questions? We've got answers. Architectural Bling is committed to helping you with your NuMetal project every step of the way. Please contact us if you have any questions or to request more information about NuMetal

What is NuMetal?

NuMetal is a collection of High Pressure Laminates with a thin metal surface and phenolic paper backing. These HPLs can be used for interior applications like wallcoverings, wall panels, and ceilings.

Does Architectural Bling stock any commodity-type HPLs?

We stock large quantities of commodity Brushed Stainless Steel and Brushed Aluminum sheets as part of our program.

What is Phenolic paper backing?

Phenolic paper backing is layers of impregnated Kraft paper bonded together.

Is phenolic paper backed metal better than unbacked metal?

In many ways, phenolic paper backed metal is superior to unbacked items. The phenolic paper backing helps protect the laminate from being dented and damaged in shipping and fabricating (it does not make the product totally resistant to damage, so the fabricator still needs to take care). Phenolic paper backed metal is also easier on router bits and saw blades, so the fabricator should get more life out of these tools using the phenolic paper backed laminate.

What is the difference between NuMetal and other similar, competitive metal lines?

The main difference is the choice and variety of items that the **NuMetal** line offers. Other competitors specialize in standard melamine HPLs, whereas we focus solely on the metal market. The phenolic paper-backed HPLs are all made the same way and fabricated with the same standard tools. There is more of a difference when compared to some of the unbacked metals. A lot of these items do not have a phenolic paper backing. This makes the items a little more difficult to fabricate and a little harder on fabricators' tools.

How can NuMetal be used in my project?

NuMetal is recommended for all vertical and light-duty horizontal use. Claddings for walls or ceilings, doors or frames,

furniture, light-duty horizontal surfaces, and displays are just a few examples of areas for **NuMetal** installation.

How about size and thickness?

Thickness is approximately .035" with the exception of Unique Art and stainless steel, which are .040" thick. Polished aluminum surfaces are anodized. Brushed aluminum and copper surfaces are lacquered. **NuMetal** sheets are typically 4' x 8' with 4' x 10' sheets available in select designs. See pages 36-37 for additional details.

How is NuMetal fabricated?

NuMetal is fabricated with the same tools used on any high pressure decorative laminate and bonded to the same type of substrates commonly used in the trade. Special care must be taken to avoid denting the surface with tools or scratching the surface with particles of metal. Carbide-tipped blades and bits are recommended. Dull blades will generate heat and scorch metal.

How can NuMetal be shipped?

NuMetal can be shipped via truck, wooden crates, or rolled for courier shipment, depending on the pattern and size of the order. It is recommended that soon after receipt the **NuMetal** should be removed from the container and stored flat so excessive roll set does not take place.

Is there any special treatment required before or after fabrication to ensure longevity of the product?

Anodization produces a hard surface that will not tarnish and has the high abrasion resistance of aluminum. All products are covered with a clear, peel-off mask to protect the finish. This mask should be left on during fabrication to avoid marring the surface.

Is the lacquer compatible with other systems?

All brushed NuMetal, Copper, and Unique Art laminates are coated with cellulose-based lacquer. This lacquer is compatible with other lacquer systems, which allows for additional finishing if necessary.

What type of adhesive is recommended?

Any contact cement or cold-set adhesive normally used with decorative laminates is suitable. Avoid adhesive spreading or setup on metallic surface. USE ONLY NAPHTHA OR BENZINE IN ADHESIVE CLEANUP – do not use lacquer solvents or other adhesive solvents, which attack lacquer coatings.

How should NuMetal be stored?

It is important to store the product flat and not on edge, as storing on edge can cause the sheet to bow after some time. Metal laminates should be stored face up in a cool, dry area and in a completely supported flat position. Use a top sheet of chipboard or similar material to hold stored sheets flat.

How should NuMetal be cleaned?

Make sure that the cleaning agent used is compatible with either our anodized or lacquered products prior to use. Clean surfaces with a soft cloth using household cleaner - waxes, Windex-type solutions, or ordinary soap and water. Good furniture or automobile waxes provide additional protection for all metal laminate surfaces.

Are there any precautions to consider when handling the product?

Metal laminates will conduct electricity and can cause shocks or short circuits when in contact with ungrounded electrical circuits. This product is laminated aluminum, copper, or stainless steel of the highest quality and brilliance. Slight surface imperfections are normal. PLEASE INSPECT CAREFULLY PRIOR TO USE to ensure the material is suitable for your needs.

Is counterbalancing necessary for NuMetal?

Counterbalancing is necessary as with other High Pressure Laminates to prevent warping of the substrate like wallcoverings, wall panels, ceilings and surfaces.

Is there an option where counterbalancing isn't required?

Yes! The Artful Metals Collection is available on a variety of 4' x 8' unbacked metal substrates. Our unbacked metals are easy-to-install with no counterbalancing required. We offer a wide range of options including FusionSwirl, Gloss or Matte White, Mill Satin, Aluminum Composite, and our uniquely textured Pebble Aluminum. FusionSwirl sheets come in a standard 4' x 10' size, with other aluminum sheets available in 4' x 10' as a special order. Special orders will have minimum order requirements; ask an Architectural Bling representative for details.

The Artful Metals Collection has such a variety of unbacked metal substrates to choose from. How do I know which substrate to use for my project?

Already know what substrate you want? Great! If not, no worries! Please talk with us about your project and we can help you. Keep in mind that your choice of substrate plays a very critical role in image quality, as well as the look and feel that you want for your project. We can help you find what works best for you.

Contact

☎ 214.613.2285

💬 Text Us at 469.406.9222

✉ info@ArchitecturalBling.com

👤 ArchitecturalBling.com/NuMetal
Live Chat Feature Also Available!

Follow Us on Social



👤 Check ArchitecturalBling.com for updated technical information and installation videos for NuMetal products.

Quick Reference Guide

NuMetal Collection: Product Quick Reference

Collection	Product Name & Finish	Item Number	4' x 8'	4' x 10'	Rollable for Shipment
Aluminum	Polished Aluminum	904	✓	✓	•
	Polished Smoke	1014	✓	✓	•
	Polished Brass	914	✓	✓	•
	Rose Gold	212	✓	✓	•
	Brushed Aluminum	245	✓	✓	•
	Brushed Stainless	256G	✓	✓	•
	Brushed Bronze	944	✓	✓	•
	Brushed Brass	934	✓	✓	•
	Aluminum Mill	204	✓	✓	•
	Aluminum Gun Metal	248	✓	✓	•
	Gun Metal Mill	603/248	✓		•
	Brushed Aluminum Fine Hammered	924 HAM	✓		•
	Neptune Brushed Aluminum	924 NEP	✓		•
	Neptune Polished Smoke	1014 NEP	✓		•
	Neptune Rose Gold	212 NEP	✓	✓	•
	Corrugated Brushed Aluminum	603/924	✓		•
	Corrugated Brushed Stainless Steel	603/256	✓		•
	Corrugated Mill Aluminum	603/209	✓		•
	Brushed Aluminum Diamond Plate	924 GEK	✓		•
	Brushed Stainless Diamond Plate	256 GEK	✓		•
	Diamond Mill Gun Metal	248 DIA	✓	✓	•
	Diamond Polished Smoke	1014 DIA	✓		•
	Diamond Rose Gold	212 DIA	✓	✓	•
	Titan Aluminum Gun Metal	248 BKE	✓		•
	Brushed Aluminum Mesh	924 NTZ	✓		•
	Brushed Stainless Mesh	256 NTZ	✓	✓	•
	Black Mesh	11 NTZ	✓		•
	Antique Pewter Mesh	490 NTZ	✓		•
	Brushed Aluminum Ridges	924 PGQ	✓		•
	Brushed Stainless Ridges	256 PGQ	✓		•
	Brushed Stainless Reeds	256 PTK	✓	✓	•
	Antique Pewter Reeds	490 PTK	✓	✓	•
	Aqua Polished Smoke	1014 AQA	✓		•
Aqua Rose Gold	212 AQA	✓		•	
Waterfall Aluminum Gun Metal	248 HMS	✓		•	
Waterfall Rose Gold	212 HMS	✓		•	
Aluminum Rondo	202 RON	✓		•	

 Items shown as concept

NuMetal Collection: Product Quick Reference

Collection	Product Name & Finish	Item Number	4' x 8'	4' x 10'	Rollable for Shipment
Copper	Matte Copper	C400	✓	✓	•
	Fine Hammered Copper	C471	✓		•
	Hammered Copper	C473	✓		•
	Antique Fine Hammered Copper	C462	✓		•
	Antique Copper Mesh	401 NTZ	✓		•
	Antique Copper Ore	C431	✓		•
Unique Art	Patina Autumn Leaves	C421	✓		•
	Patina Onyx	C412	✓		•
	Patina Malchit	C414	✓		•
	Madrid	CA5	✓		•

Artful Metals Collection: Substrate Quick Reference

Collection	Substrate (Fusion)	4' x 8'	4' x 10'	Rollable for Shipment
Artful Metals	Aluminum, FusionSwirl		✓	
	Aluminum, Gloss or Matte White	✓		
	Aluminum, Mill Satin	✓		
	Aluminum, Pebble	✓		
	Aluminum, Composite	✓		

IMPORTANT DISCLAIMER: We believe all the information correct. However, we are not fabricators and are merely passing on information received from fabricators who have worked successfully with **NuMetal**. It is totally the responsibility of the fabricator to completely test the adhesives and methods of fabrication to insure the results are satisfactory for the fabricator's requirements. We are not responsible for any fabrication costs involved with using **NuMetal**. See our warranty section.

***Some NuMetal products are available as 4' x 10' for special orders. Please call for more information.**

- ✓ For products/substrates; available in specified size
- Rollable for Shipment
- Special order requirements; call Customer Service at 214.613.2285

How to Order

Client Satisfaction & Quality for Your Dollar Are the Goals We Try to Achieve

When Ordering Please Specify:

1. **Pattern Name and Number**
2. **Color Name and Number**
3. **Size and Thickness**
4. **Type of Installation**
(i.e.: Wall, column, fixtures, or specify other)

Technical Specifications

Please see the Technical Specs on our website at ArchitecturalBling.com.

Return Policy

All shipments are to be inspected within 10 working days after delivery. Architectural Bling is to be informed in writing of any potential adjustment necessary. If returned undamaged, return of first-quality stocked items subject to a 20% restock fee.

Samples

Due to printer and digital screen limitations, patterns and finishes shown in this catalog may not accurately reflect **NuMetal** products. Request tangible samples to be verified and approved prior to specification and final application. Samples are available upon request. Be sure to visit us online at ArchitecturalBling.com for the latest designs and finishes.

Conditions and Warranty

Architectural Bling warrants to the original consumer purchaser for one (1) year after date of purchase that, under normal use and service, MirroFlex™, Fusion, NuMetal™, and LumiSplash™ products are free from manufacturing defects and conform to published specifications. This warranty applies as long as the consumer purchaser and/or installer follows Architectural Bling's installation instructions (methods), which also includes using recommended adhesives, when adhering our products to recommended surfaces. Architectural Bling's Laminate products are intended for primarily interior applications.


Architectural Bling believes all information contained herein to be correct. It is the responsibility of the contractor/customer to completely test the adhesives and methods of fabrication to ensure that the results are satisfactory. The seller's only obligation will be to replace product on a one-to-one basis in the event it is covered under the above warranty. Architectural Bling is not responsible for any fabrication, ancillary, or labor costs involved with using its products. Neither the manufacturer nor the seller shall be liable for any additional damage or loss, directly or indirectly, arising as a result of using its products.

Slight imperfections and color variations can occur and are considered normal. Please inspect each product carefully before fabrication to ensure it meets your needs.

Follow Us on Social



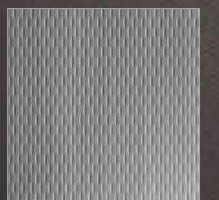
Contact

214.613.2285 

Text Us at 469.406.9222 

Sales@ArchitecturalBling.com 

ArchitecturalBling.com/NuMetal 
Live Chat Feature Also Available!



THE FORMULA
BRUSHED ALUMINUM WAFFLE - 924 WAF



Architectural Decorative Elements

ArchitecturalBling.com

214.613.2285
