

DECOS

All Ornamentation is Flexible, Stainable & Paintable



Above photo highlights our clavos and panels in conjunction with distressed construction grade lumber to create a pair of ancient looking doors.

Architectural Bling Inc.

Dallas Design Community

4020 N MacArthur Blvd, Suite 122-270, Irving, TX 75038

(214) 613-2285 | www.ArchitecturalBling.com | info@ArchitecturalBling.com

DECOS

DECOS



DC-102A
2-1/4" x 2-1/4" x 1/2"

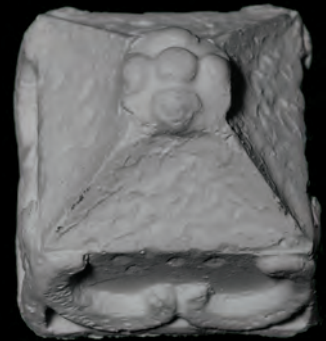
DC-102B
3-1/2" x 3-1/2" x 5/8"

DC-102C
5" x 5-1/8" x 7/8"



DC-116A
2" x 2" x 1"

DC-116B
2-1/4" x 2-1/4" x 1-1/4"



DC-118A
1-1/4" x 1-1/4" x 1/4"

DC-118B
1-1/2" x 1-1/2" x 1/4"



DC-100A
1-3/4" x 3-7/8" x 5/8"

DC-100B
2-3/8" x 4-3/4" x 3/4"

DC-100C
3-7/8" x 7-5/8" x 1"



DC-160A
2" x 1-3/4" x 1/2"

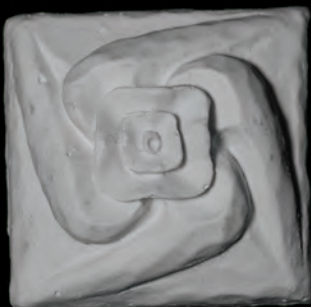
DC-160B
3-3/8" x 3-3/4" x 1/2"

DC-160C
5" x 5-1/2" x 3/4"



DC-150A
1-1/2" x 1-1/2" x 5/8"

DC-150B
2" x 2" x 3/4"



DC-151A
1-1/2" x 1-1/2" x 3/4"

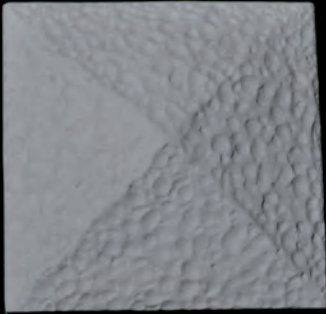
DC-151B
2" x 2" x 1"



DC-152A
1-1/4" x 1-1/4" x 3/4"

DC-152B
1-1/2" x 1-1/2" x 3/4"

DECOS



- DC-210A** 1-1/8" x 1-1/8" x 5/8"
- DC-210B** 2" x 2" x 5/8"
- DC-210C** 2-3/4" x 2-3/4" x 3/4"
- DC-210D** 3-3/8" x 3-3/8" x 1"

- Sized to fit in corner of panel, PANL-206**
- Designed to fit in plinth block, PB3-5**
- Designed to fit in plinth block, PB4-5**
- Designed to fit in plinth block, PB5-5**

PB3-5 Shown with optional DC-210



- DC-211A** 1-1/8" x 1-1/8" x 5/8"
- DC-211B** 2" x 2" x 5/8"
- DC-211C** 2-3/4" x 2-3/4" x 3/4"
- DC-211D** 3-3/8" x 3-3/8" x 1"

- Sized to fit in corner of panel, PANL-206**
- Designed to fit in plinth block, PB3-5**
- Designed to fit in plinth block, PB4-5**
- Designed to fit in plinth block, PB5-5**



PANL-206 Shown with optional Deco, DC-211A



DECOS

* All sizes are approx.- max W" x max H" x Thickness"

DECOS

Our products are also safe to be used outside featured on this estate gate

