

# ARCHITECTURAL

# Bling®

"Architectural Decorative Elements"

## FAÇADE DESIGN HEAVYROLL

Façade design in Brutalism style.

Today more than ever, individual façade design is important. With HeavyRoll, you stand out from your competition. Our products guarantee a consistently independent authentic look with a fast and easy installation.





HeavyRoll HR-01C, creme, 10 cm narrow plank,  
Size of the sheet approx. 3.00 x 1.00 m



HeavyRoll HR-01, 10 cm narrow plank,  
Size of the sheet approx. 3.00 x 1.00 m


## HEAVYROLL NEW YORK

A 3-4 mm thick concrete roll with deep three-dimensional structure.

This rough, highly textured surface is variable in colour due to the natural concrete and rocks, the colour of this rough surface is variable.

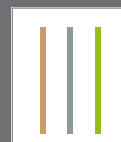
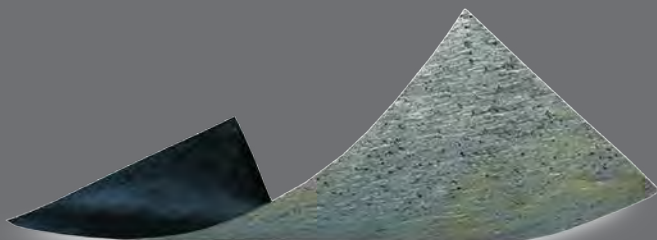
Available in rolls to transform simple wall surfaces into new exciting scenes.

### Environmentally friendly

- light and thin (3-4 mm), flexible
- natural basic materials such as stone powder
-  Hand made in Germany



HeavyRoll HR-03, 20 cm wide plank,  
Size of the sheet approx. 3.00 x 1.00 m



# SLATE LITE









"Architectural Decorative Elements"

# New York HeavyRoll *rollable concrete*



recyclable



UV-resistant



Water-resistant



Frost-resistant



Fire-resistant



diffusion open



SLATE LITE



# INTERIOR



# EXTERIOR





# HEAVYROLL POMPEII

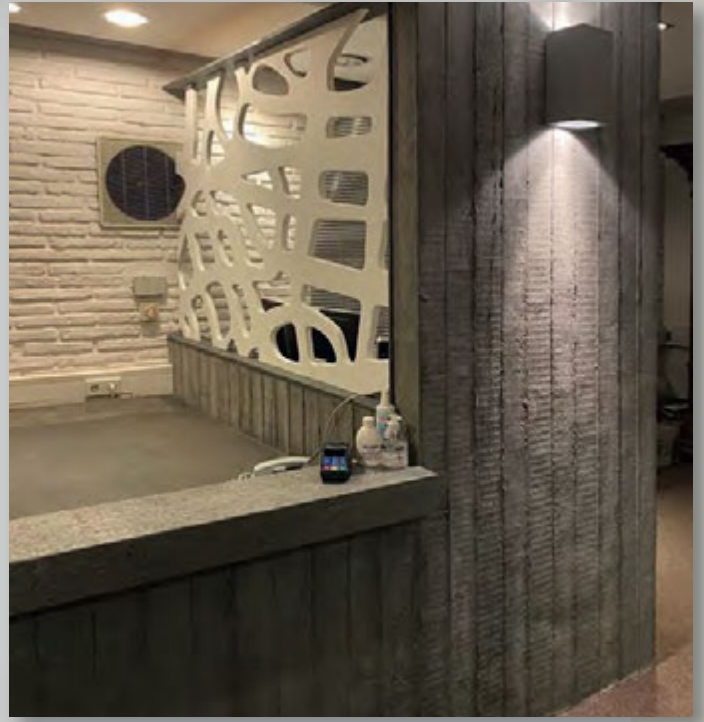
Fire plank - burnt wood as a roll

Our new highlight is the reproduction of a traditional Japanese art of building: Yakisugi. However, you can obtain the supposedly charred wood surfaces from us on a sheet of approx. 3.00 x 1.00 m and only approx. 2-4 mm thick.

The look of the Yakisugi wood, which is known at StoneslikeStones under the term POMPEII, is absolutely free of burning smell and can be used and can be used without hesitation as a modern wall covering.









## HEAVYROLL RUST

The patterns of the reliefs can vary. There are hardly any limits to your imagination.  
Size of the sheet approx. 3.00 x 1.00 m

