

SOUNDCORE®

RECYCLED PET ACOUSTIC FELT



SOUNDCORE®
MATERIAL GUIDE



LIGHT WEIGHT

Super light material opens up options for ceilings and surfaces.



POWERFUL ACOUSTICS

High Noise Reduction Coefficient.



FIRE-SAFE

ASTM E84: Class A tested and compliant.



VOC FREE

CDPH Standard Method V1.2 School Classroom and Private Office Compliant.



CUSTOM SIZING

Custom-sized products arrive installation ready.



SUSTAINABILITY

Made from 60% recycled content and is 100% recyclable.



LOW MAINTENANCE

A light dusting is all you'll ever need.



LEAD TIME

1-2 weeks with vast color options.



SPECIFICATIONS

PRODUCT NAME

Soundcore®

CONTENT

Recycled PET acoustic felt

DURABILITY

Impact resistant, shock absorbant

WEATHERING

Non-deteriorating, non-hygroscopic, colorfast

MAINTENANCE

Clean with vacuum or light dusting

WARRANTY

Comes with industry-leading standard warranty

ENVIRONMENTAL

LEEDv4, VOC free, 100% recyclable, non-toxic, non-allergenic, anti-microbial

ACOUSTICS

0.45 - 0.95 NRC

FLAMMABILITY

ASTM E84: Class A



SCAN ME

VIEW ON [ARCHITECTURALBLING.COM](https://www.architecturalbling.com)

COLORWAYS

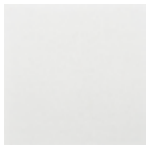
SOUNDCORE®

RECYCLED PET ACOUSTIC FELT

PREMIER COLORS | 1/2" x 4' x 9'



SND037
Paper



SND019
Linen



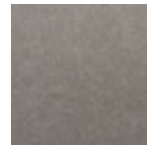
SND130
Buckskin



SND102
Morning Fog



SND114
Lunar Dust



SND131
Abalone



SND129
Dried Thyme



SND126
Wolfhound



SND103
Storm Cloud



SND038
Inkwell



SND110
Starry Night



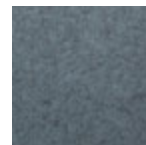
SND125
Chinchilla



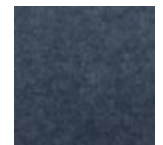
SND118
Anchor



SND115
Mako



SND124
Ice Floe



SND128
Arctic Ocean



SND117
Serene



SND123
Chrysocolla



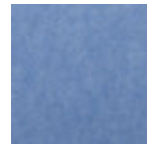
SND116
Blue Marlin



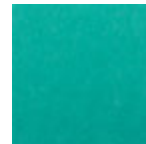
SND101
Commodore



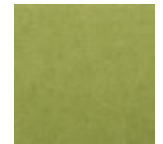
SND121
Apatite



SND042
Denim



SND112
Tulum



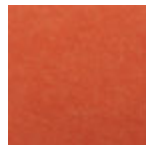
SND107
Grasshopper



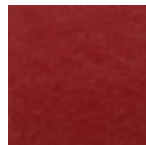
SND113
Gruner



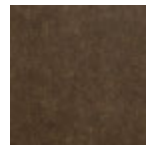
SND106
Goldfinch



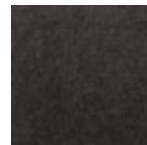
SND104
Pumpkin



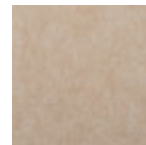
SND108
Ablaze



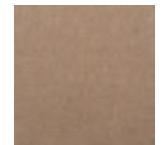
SND127
Burnt Toast



SND122
Briquette



SND105
Sand Dollar



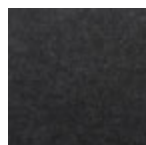
SND109
Macadamia



SND111
Lanai



SND034
Granite Peak



SND132
Cast Iron



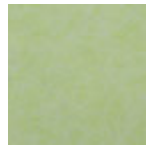
SECONDARY COLORS | 3/8" x 4' x 8' | *Call for lead times*



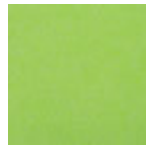
SND821
Cucumber



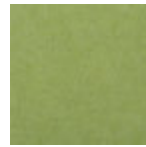
SND822
Spearmint



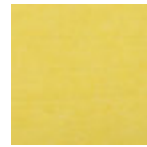
SND823
Macaron



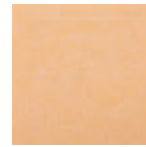
SND820
Pistachio



SND819
Turaco



SND808
Quince



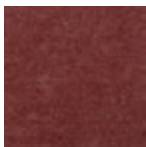
SND807
Easter



SND809
Lemon Bar



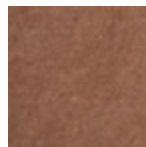
SND812
Masquerade



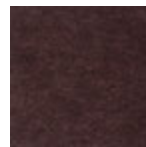
SND811
Sumac



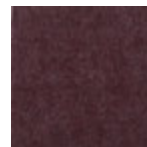
SND817
Saffron



SND829
Cuyuna



SND828
Chestnut



SND818
Mamey



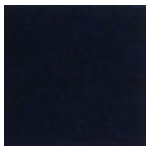
SND815
Bishop



SND813
Plum



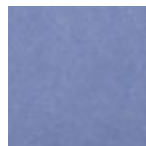
SND814
Lavender



SND831
Blue Jean



SND826
Nocturne



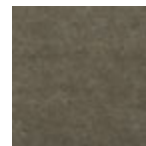
SND806
Dolphin



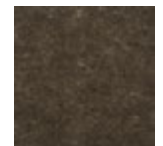
SND824
Zenith



SND827
Velva



SND832
Akita



SND830
Worn Path



SND833
Koala



SND834
Burnt Wood



SOUNDCORE® WOOD TEXTURES

RECYCLED PET ACOUSTIC FELT

PREMIER COLORS | 1/2" x 4' x 9'



SND727
Chocolate Teak



SND724
Rose Oak



SND721
Toasted Walnut



SND723
Fall Oak



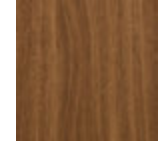
SND716
Modern Walnut



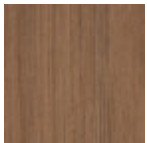
SND715
Butternut Brownie



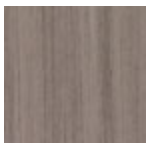
SND703
Dark Oak



SND701
Medium Walnut



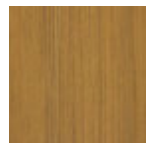
SND728
Walnut Teak



SND726
Pewter Teak



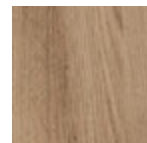
SND722
Honey Oak



SND705
Golden Rays



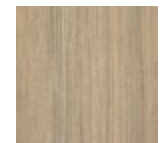
SND720
Red Oak



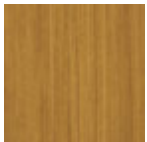
SND717
Roughed Up Oak



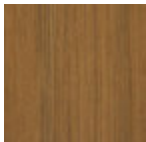
SND714
Soft Greige Walnut



SND706
Grieger Walnut



SND708
Dark Cherry



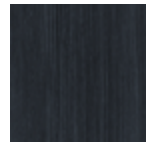
SND707
Natural Walnut



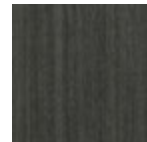
SND711
Light Maple



SND713
Caramel Coffee



SND704
Raven



SND702
Singed Ash



SND725
Pebble Teak



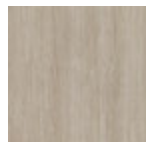
SND718
Aged Barnwood



SND710
Calico



SND719
Weathered Oak



SND712
Straight Teak



SND709
Limed Oak



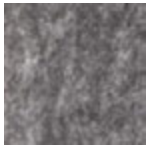
SOUNDCORE® PLUS

EXTRA THICK RECYCLED PET ACOUSTIC FELT

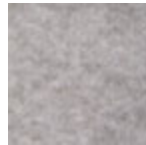
PREMIER COLORS | 1" & 2", 4' x 8'



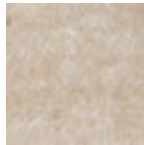
SND902
Anthracite



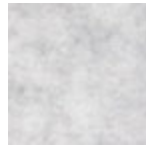
SND904
Timber Wolf



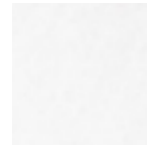
SND901
Sterling



SND905
Feldspar



SND903
Quartz

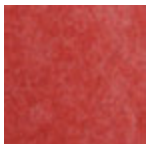


SND900
Polar

SECONDARY COLORS | 1" & 2", 4' x 8' | *Call for lead times and minimum orders*



SND912
Snapper



SND913
Cherry



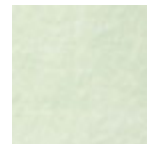
SND914
Zinnia



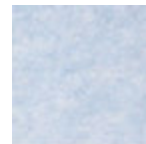
SND916
Starfruit



SND915
Honeysuckle



SND917
Vintage Mint



SND918
Palawan



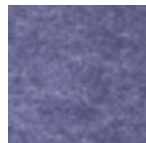
SND919
Azure



SND920
Blue Racer



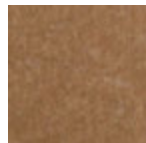
SND922
Hyacinth



SND921
Currant



SND923
Bell Flower



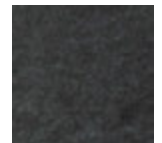
SND907
Mule Deer



SND908
Fern Moss



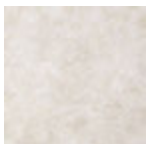
SND909
Serpent



SND910
Cypress



SND911
Blush



SND906
Sandy Marble



RESPONSIBLE INNOVATION

We source our materials responsibly, using 100% recyclable materials. The majority of the material composition comes from post-consumer plastics, which means you're not forwarding the environmental bill to the next generation.

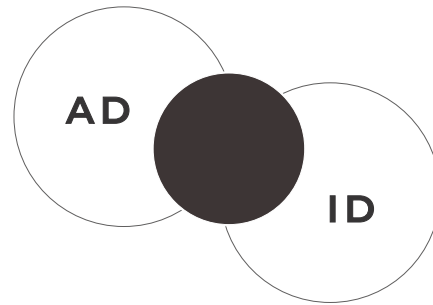
Soundcore® is 100% VOC free (Volatile Organic Compound), which means from day one there will be zero odorous fumes, and zero air toxicity. It's also ASTM E84: Class A fire rated and offers resonant insulation to build a more comfortable environment.

All of these check-boxes make up a surprisingly lightweight, soft-touch panel that we're incredibly proud of.









ABOUT US

We see your vision.

We internalize your program.

We design curated architectural solutions.

Architectural Bling builds around the convergence of **Architectural Design** and **Industrial Design**

Our AD studio sees the grand scheme. We solve your project holistically, and enhance the entire space as a singular experience.

Our ID studio sees the missing pieces. We design curated products into your program that solve the specific needs of your space.

LETS GET STARTED

Whether you're work-shopping solutions for your project, searching for the perfect design, or starting at square one, Architectural Bling is here to make it effortless.

We'd love to start a dialog to find out what you're looking for and how we can help you get there.

Visit ArchitecturalBling.com or call 214.613.2285 to get started.



CALL

214.613.2285

EMAIL

info@ArchitecturalBling.com

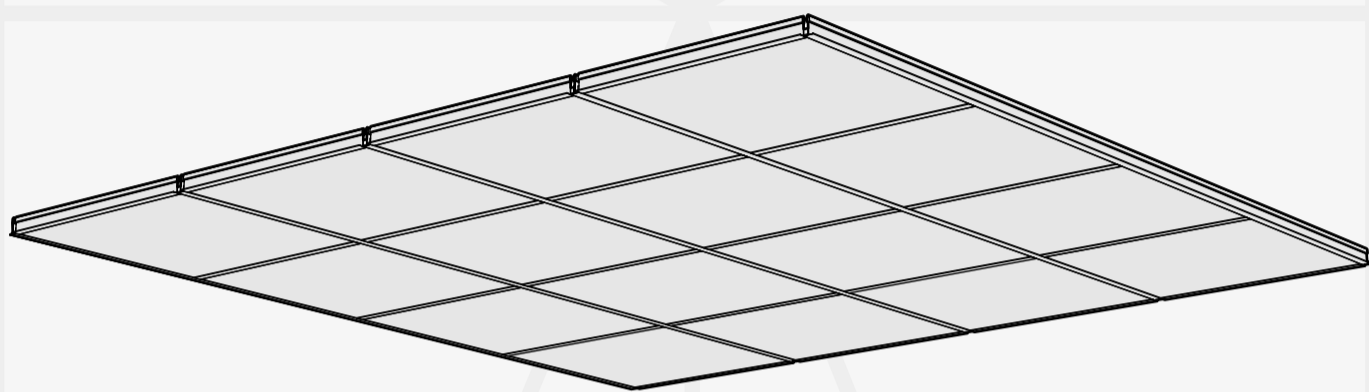
ADDRESS

Dallas Design Community
4020 N MacArthur Blvd - #122
Irving, TX 75062
United States





214.613.2285 | INFO@ArchitecturalBling.com | ArchitecturalBling.com



Tile Grid 001

GRD-TLE-001



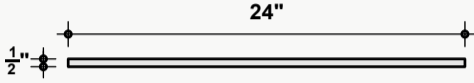
PRODUCT SPECS

Product Name	Tile Grid 001	
Product ID	GRD-TLE-001	
Acoustics	0.40 - 0.60 NRC	
Lead Time	Lead time is dependent on project size. Contact us for more information.	
Durability	Contract	
Warranty	Comes with industry-leading standard warranty.	
Flammability	ASTM E84: Class A	
Custom	Custom colors and manufacturing services available. Additional charges and lead times may apply.	
Maintenance	Vacuum occasionally to remove airborne dust or debris. Mild detergents or soaps may be used to remove stains. For detailed care instructions, refer to the Architectural Bling Maintenance Information document.	
	Soundcore®	PoshFelt®
Content	Recycled PET acoustic felt	100% Merino or Karakul Wool acoustic felt
Weathering	Colorfast, non-deteriorating, non-hygroscopic	Colorfast, non-deteriorating, non-woven, moisture resistant
Environmental	Recycled PET acoustic felt is 60% post-consumer recycled content and is 100% recyclable. Contributes points toward LEED v4. CDPH v1.2, VOC free, non-toxic, non-allergenic, anti-microbial - does not attract mold and mildew. Compliant with Living Building Challenge criteria & DECLARE Red List Free.	100% organic wool design felt is a rapidly renewable resource and is 100% biodegradable/compostable. Contributes points toward LEED v4. CDPH v1.2, VOC free, no chemical irritants, no formaldehyde, and is free of other harmful substances. Compliant with Living Building Challenge criteria & DECLARE Red List Free.
Variation	PET felt panels are created through a manufacturing process known as 'felting'. This process results in a heathered appearance. Multiple color tones may appear in the same panel. Slight color variations should be expected.	Due to its 100% natural origin, the raw fibers of wool felt contain inclusions and color variations throughout the material. Color matching is not guaranteed between dyelots and inconsistencies may be more prominent in volumes that exceed the normal commercial standard.

TECHNICAL DRAWINGS

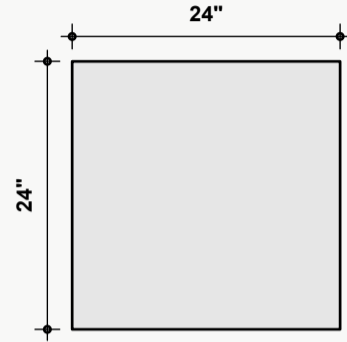
Standard Dimensions

Typical ranges for height and width.
Width is independent of material selection.



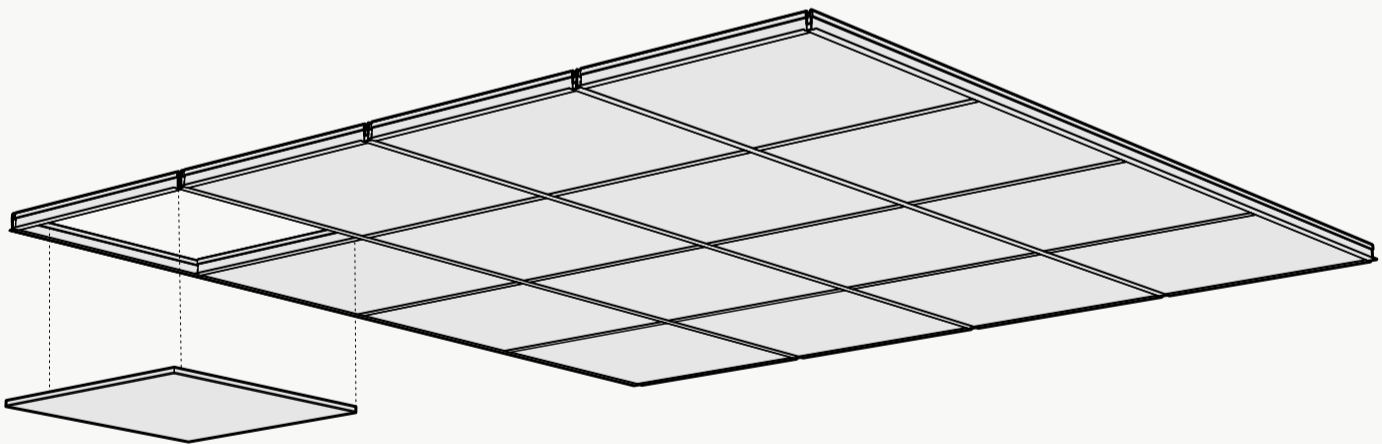
Standard Length

Length is independent of material selection.



Custom Opportunity

Product dimensions can be manipulated in order to fit your design aesthetic and site conditions.



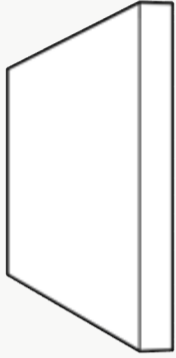
Unit Configuration

The configuration shown is suggested but can be customized to reflect your design intent and the needs of your space.

MATERIAL LAYERS

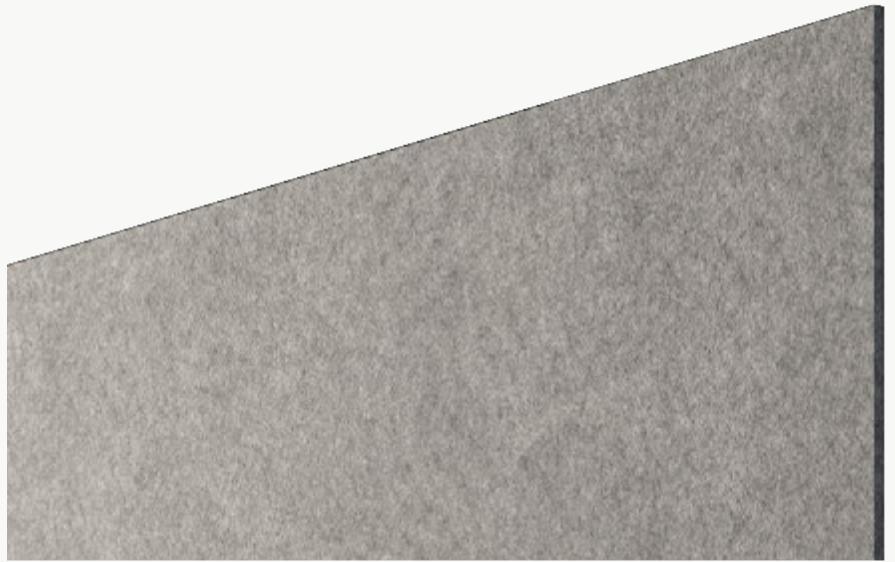
Soundcore®

Our recycled PET felt creates an acoustic barrier, defending against wandering white noise and irritating echoes.



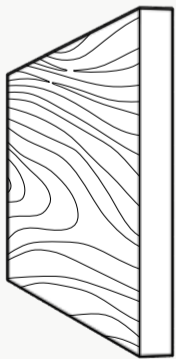
Single Layer

½" Thickness



Soundcore® Wood Textures

Soundcore® wood textures provide the natural aesthetic of wood while maintaining all the acoustic benefits of PET felt. Custom texture opportunities are also available upon request.



Single Layer

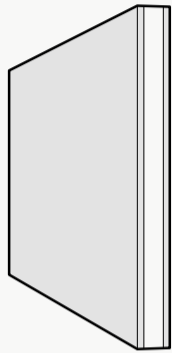
½" Thickness



MATERIAL LAYERS

PoshFelt® Exposed Edge

100% organic, natural wool design felt brings out the best experience in your space with color, comfort, and simple sustainability. Exposed edge baffles leave the Soundcore® layer uncovered, allowing for unique color combinations.



Multi-Layer

Adds 1/8" - 1/4" to Material Thickness

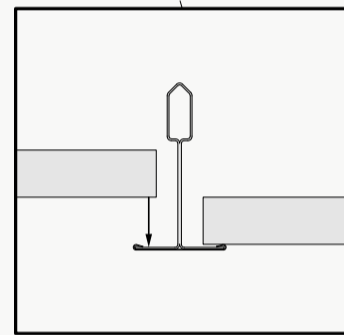
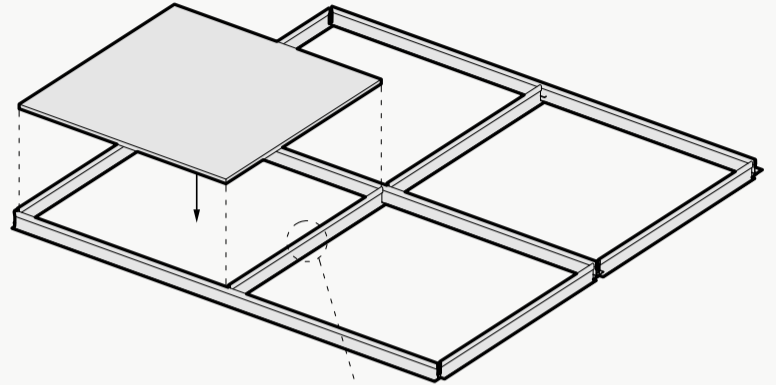


INSTALLATION

All products and installation methods can be **customized** to meet the unique requirements of your space.

1 Drop-In

- + Most secure installation method
- + Substrate based, no hardware needed



2 Magnet

- + Easiest to install, adjust and remove
- + Visually obstructs metal grid structure

