

Parks and Recreation Department

# Gompers Neighborhood Park Dog Off-Leash Area

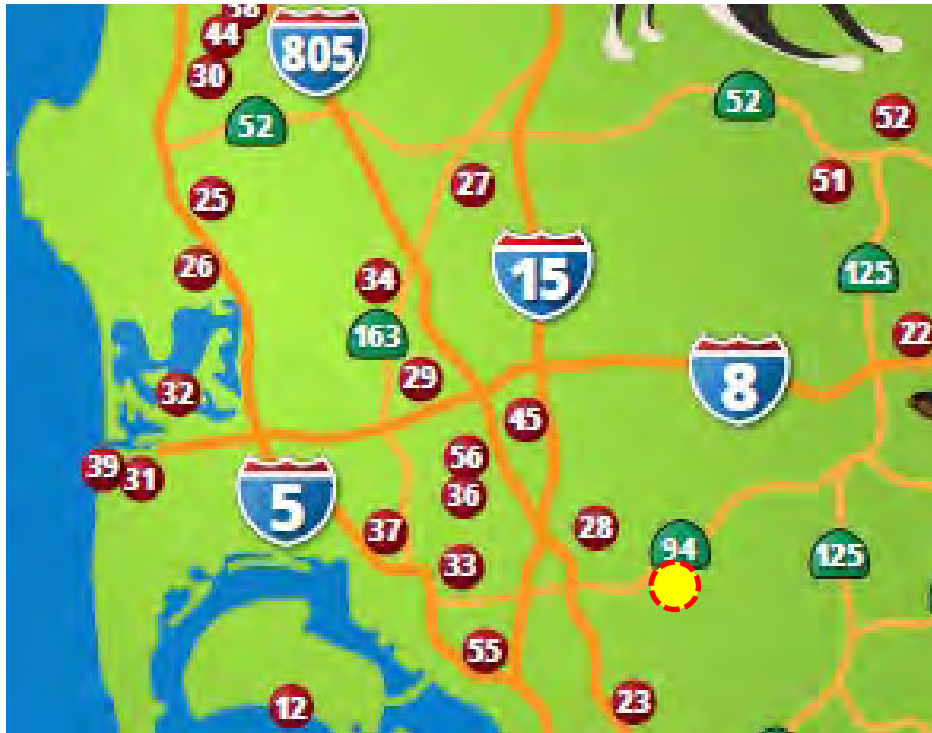
**Encanto Community Recreation Group  
Action Item**

**March 29, 2023, 6pm**



# Parks and Recreation Department

## Existing Dog Parks in San Diego County



Approximate location of Gompers NP



COMPER 22 HIGH SCHOOL

HILLTOP DRIVE

OPEN PLAY LAWN

DRINKING FOUNTAIN

RESTROOM

TINY TOTS

PICNIC AREA

TYPICAL BAR-B-Q

TYPICAL PICNIC TABLE

CAROLINA LANE

WRIGHT 6A08 JUNIOR HIGH SCHOOL

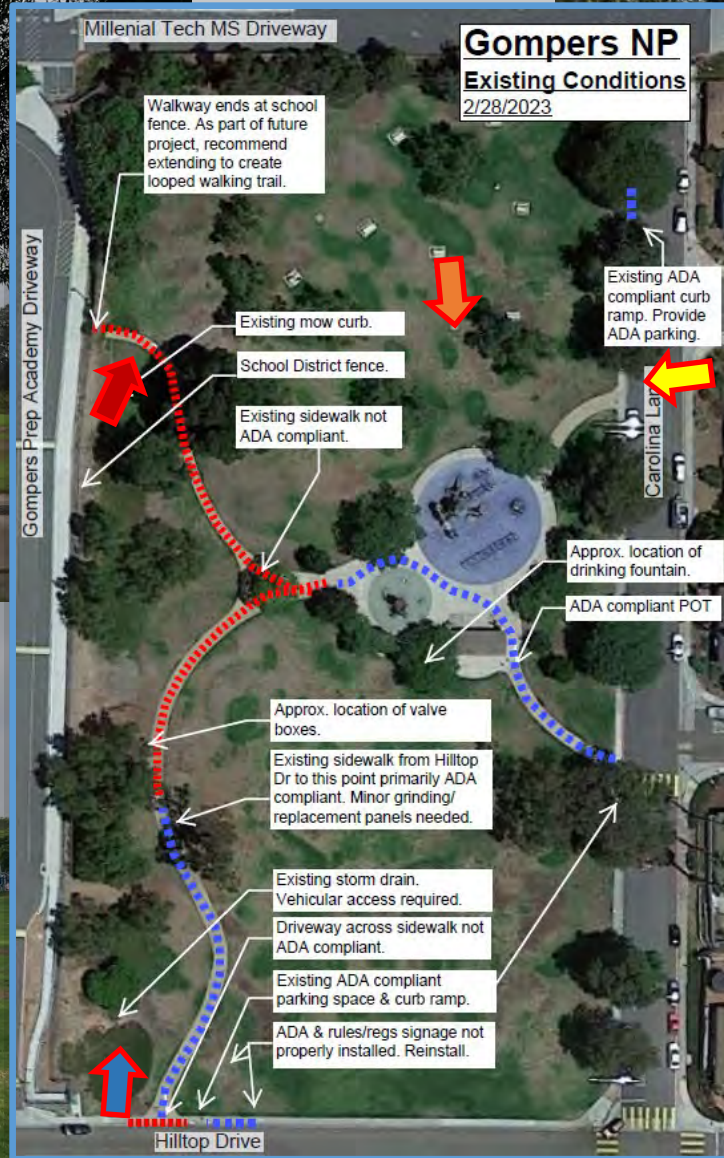
GRAPHIC SCALE IN FEET



View looking SW from North end of park





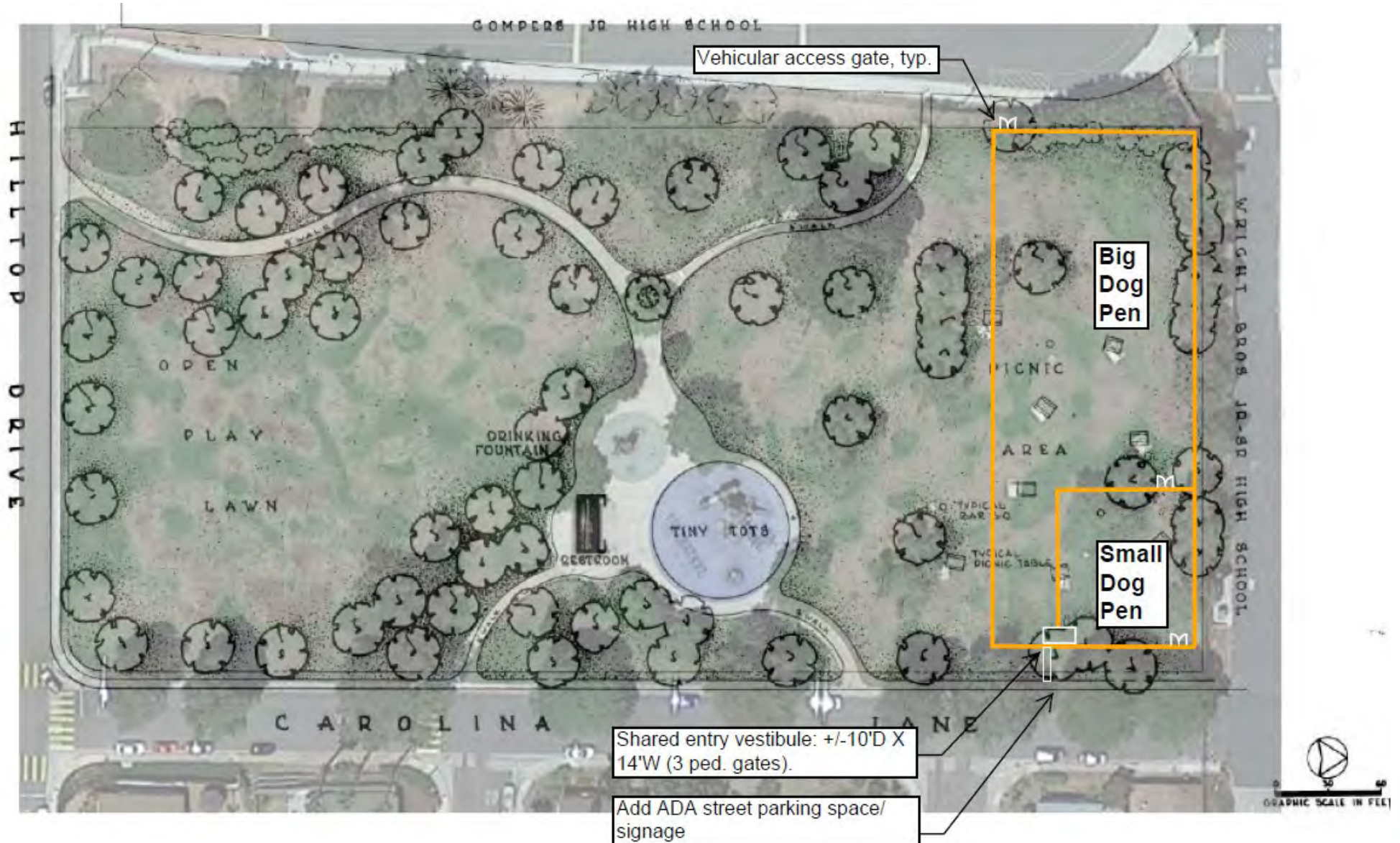


## Existing Conditions:





# Gompers DOLA Concept Plan







## Dog Off-Leash Area Design Elements & Amenities



ADA path of travel from street parking to entry vestibules.



Signage: Park name, hours of operation, rules and regulations, etc.



Repurposed logs for agility training & seating. Community direction requested if logs are desired for Gompers DOLA.



Trash/recycling receptacles and dog-bag dispensers at entry. Trash receptacles within pens.



Separate fenced (chain-link) areas for large and small dogs.



Benches in shade of existing trees.



Dog drinking fountain (TBD). Contingent on funding and access to potable water line.



# Maintenance & Surfacing Materials



## **Maintenance:**

DOLA will be closed for +/-4 hours per week for regular maintenance.

Many Cities, including San Diego, have determined that turf is not a sustainable surface for DOLA's.

Per City of Denver's Dog Master Plan, turf is not an approved material for DOLA's: "DPR has determined that grass is the most difficult and costly surface to maintain.... With the high number of dogs that use DPR facilities, grass is not a viable, sustainable option."



## **Natural Turfgrass is Not a Long-Term Sustainable Surfacing Material for DOLA's within City of San Diego:**

Turfgrass is not an approved surfacing material for new DOLA's developed through Capital Improvement Projects. Current approved DOLA surfacing materials include decomposed granite, synthetic turf and 'walk on' wood chips.

Long range goal for surfacing at Gompers DOLA would be conversion from natural turf to decomposed granite.

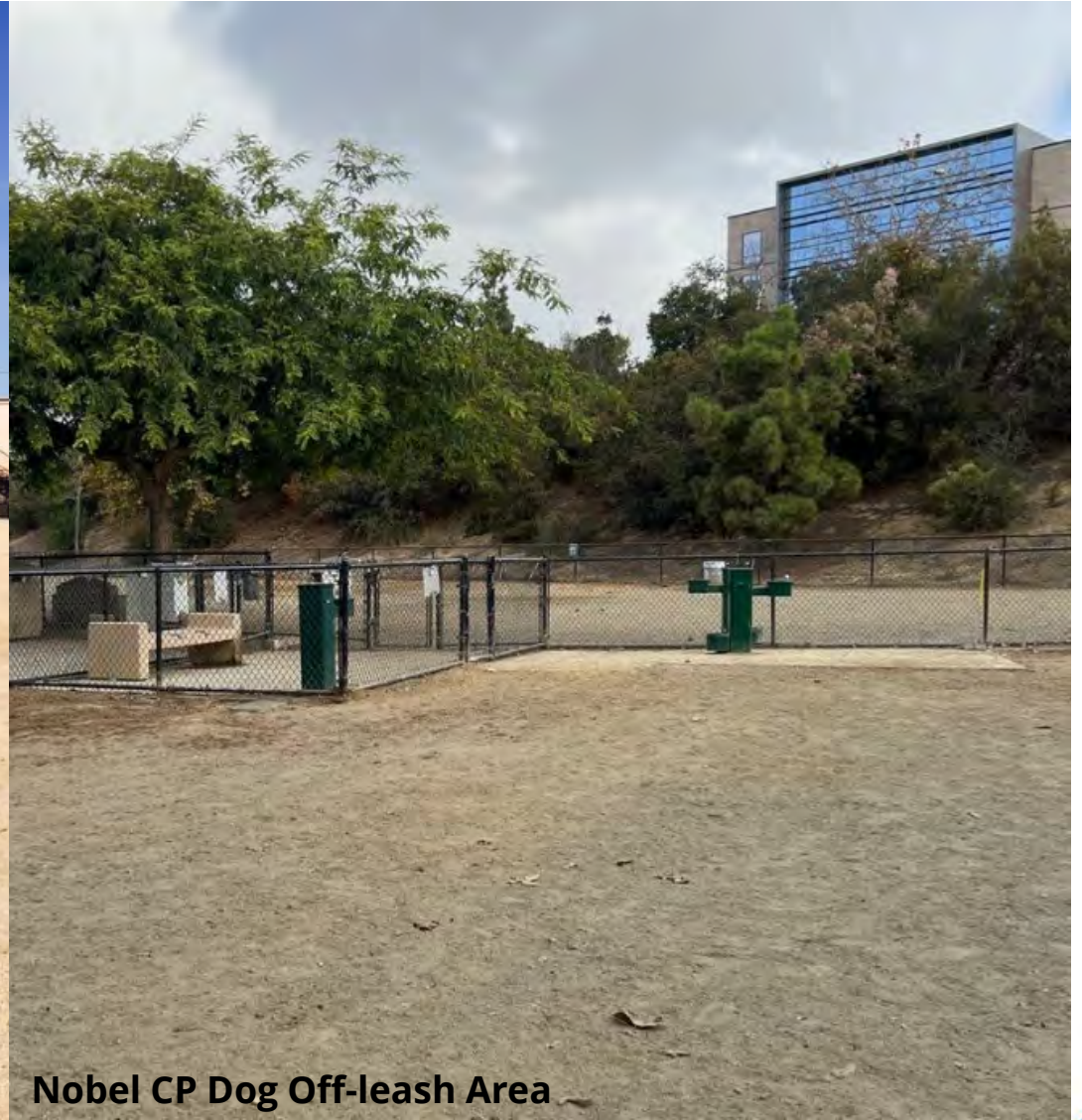




# Decomposed Granite Surfacing



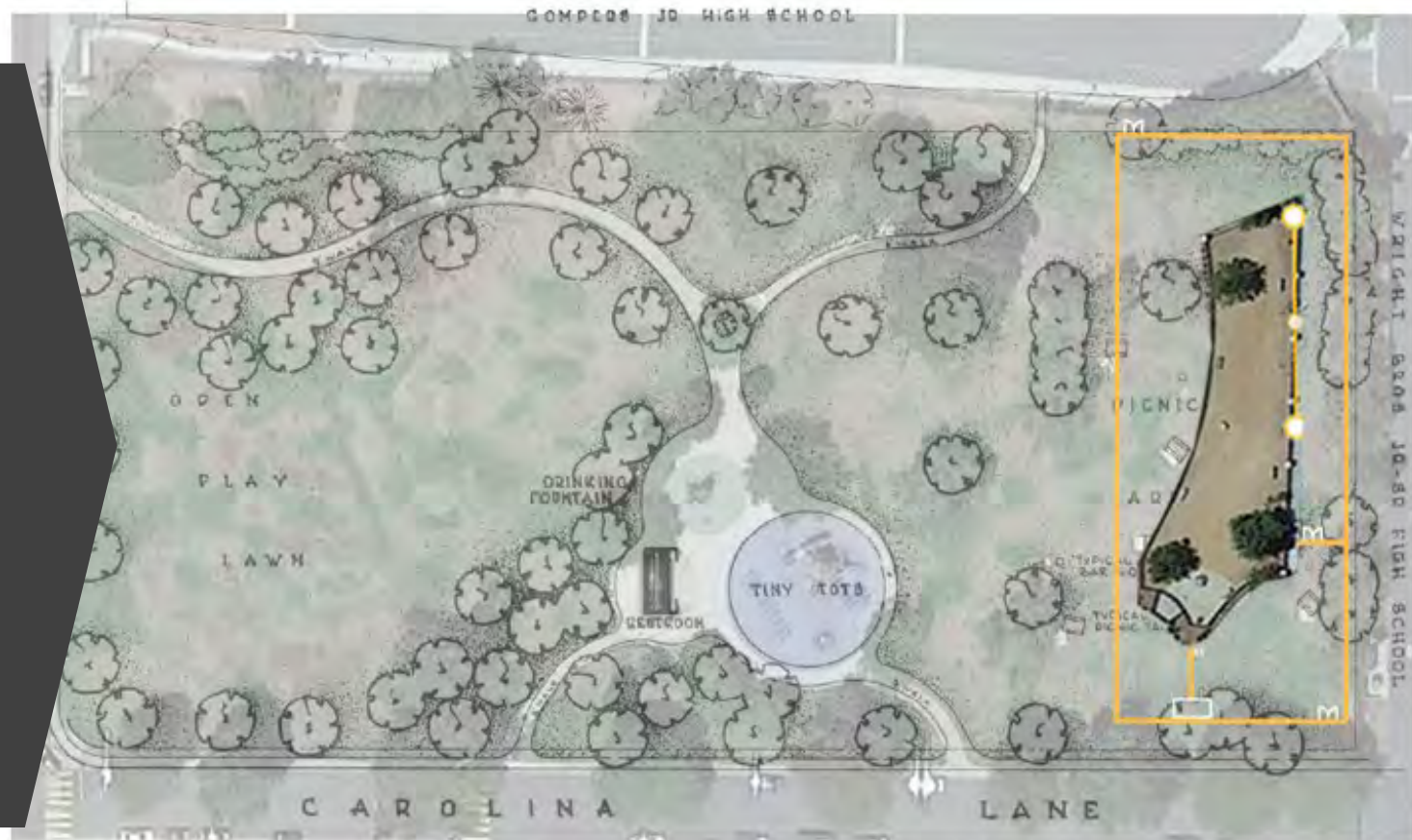
Charles Lewis III Memorial Dog Off-leash Area



Nobel CP Dog Off-leash Area



How would  
the size of  
Gompers  
Dog Park  
Compare to  
Other Dog  
Parks in San  
Diego?



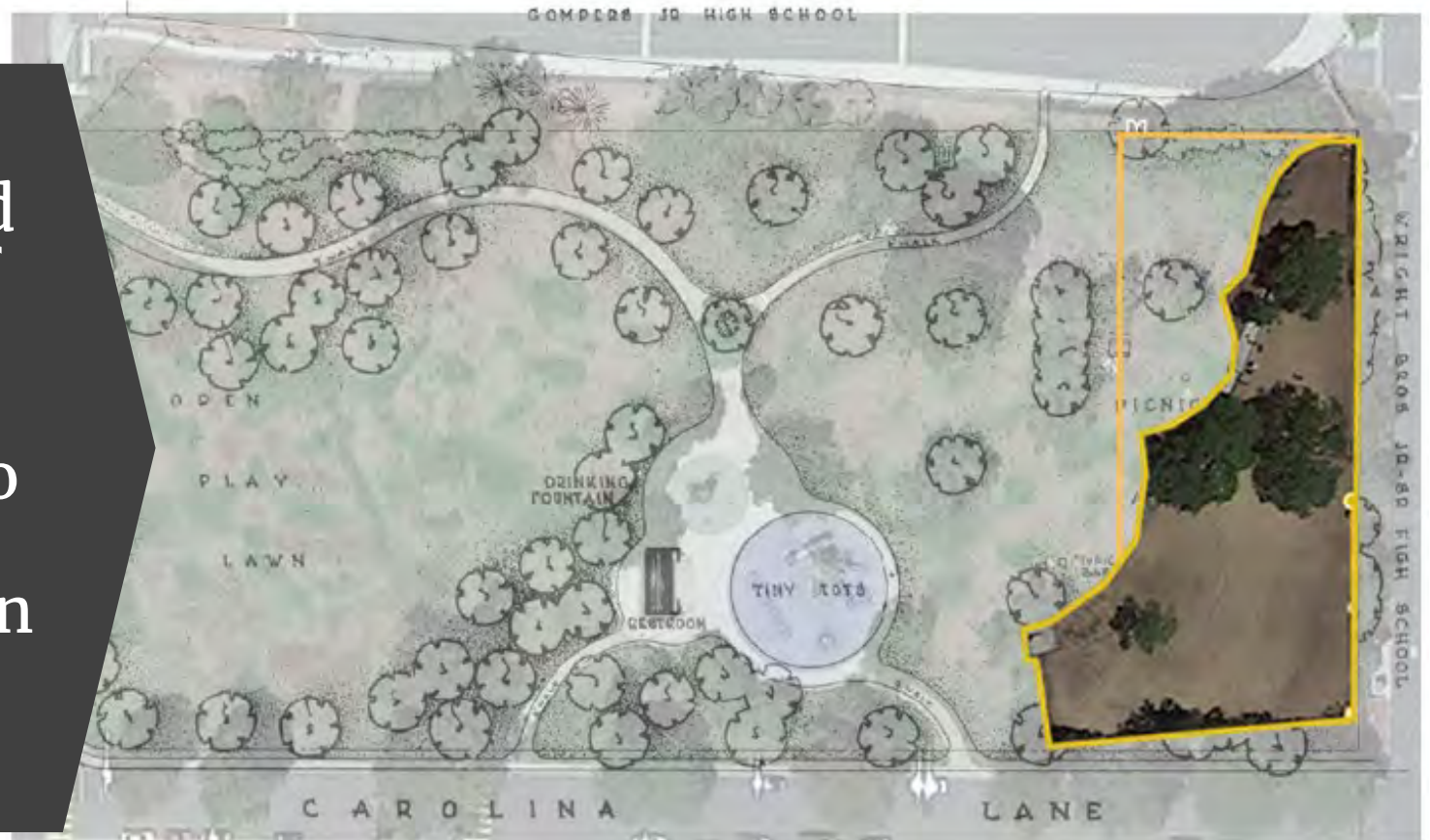
### Charles Lewis III vs. Gompers NP

Charles Lewis III Memorial= 9,000sf

Gompers NP = 26,000sf



How would  
the size of  
Gompers  
Dog Park  
Compare to  
Other Dog  
Parks in San  
Diego?



### Doyle CP vs. Gompers NP

Doyle CP= 22,765sf

Gompers NP= 26,000sf





## Next Steps

- Encanto CRG, Action Item (Vote Tonight). Parks & Rec Department recommends approval.
- CEQA determination (Planning Dept.).
- P&R Board for Approval for GDP Amendment per Council Policy 600-33.





# Questions & Feedback

