



GD ENTRY
VIRTUAL INTERCOM

Door entry for the modern age

[GDENTRY.COM](https://gdentry.com)



The GD Entry Virtual Callbox System is a cost effective, easy to install virtual entry system.

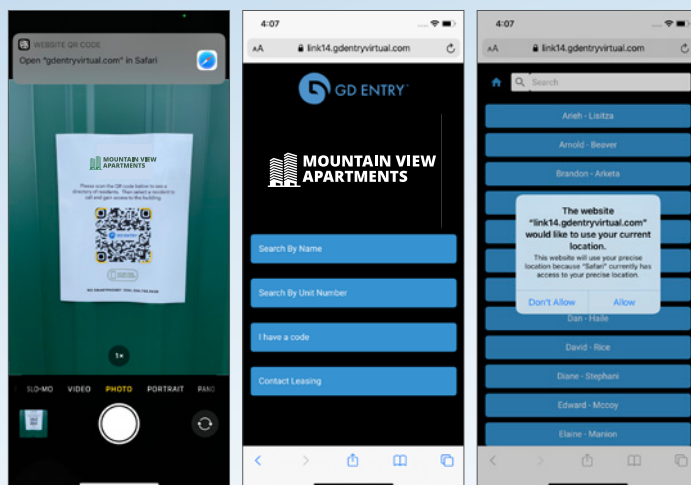
The complete solution includes a QR panel or sticker, an APP, a camera, and the Tunnel-V door trigger system. The scan of the QR code at the building entry will allow the visitor to contact any building resident using their own phone screen. The building resident can then use their smartphone APP to video authenticate the visitor and grant access from anywhere.

No smartphone? Dial the phone number on the panel or sticker and an IVR allows to dial by name for entry.

MARKET NEEDS

- Space-saving solution for entries with limited surface space for callbox installations
- Offers smaller buildings with less tenants an affordable option to secure their buildings
- Offers buildings with existing callbox installations (ie: DKS, Mircom, Aiphone, etc) an upgrade by simply placing a QR sticker on the face of the third-party callbox. Paired with our camera and Tunnel-V door triggering system, building owners are able to add the desired technology at very little cost and/or disruption.
- High-crime locations can utilize to make it more difficult for vandals to gain access to a building's call box by brutal crowbar force. Possible damage is minimized as there is nothing to break, and it is easy to replace or restore the QR code. Hardened sticker packages come with five QR stickers for easy replacement.
- Commercial spaces can use the system as a virtual receptionist, allowing the human receptionist to step away from their desk or work from home without missing anything.

How does the GD Entry Virtual Callbox work?



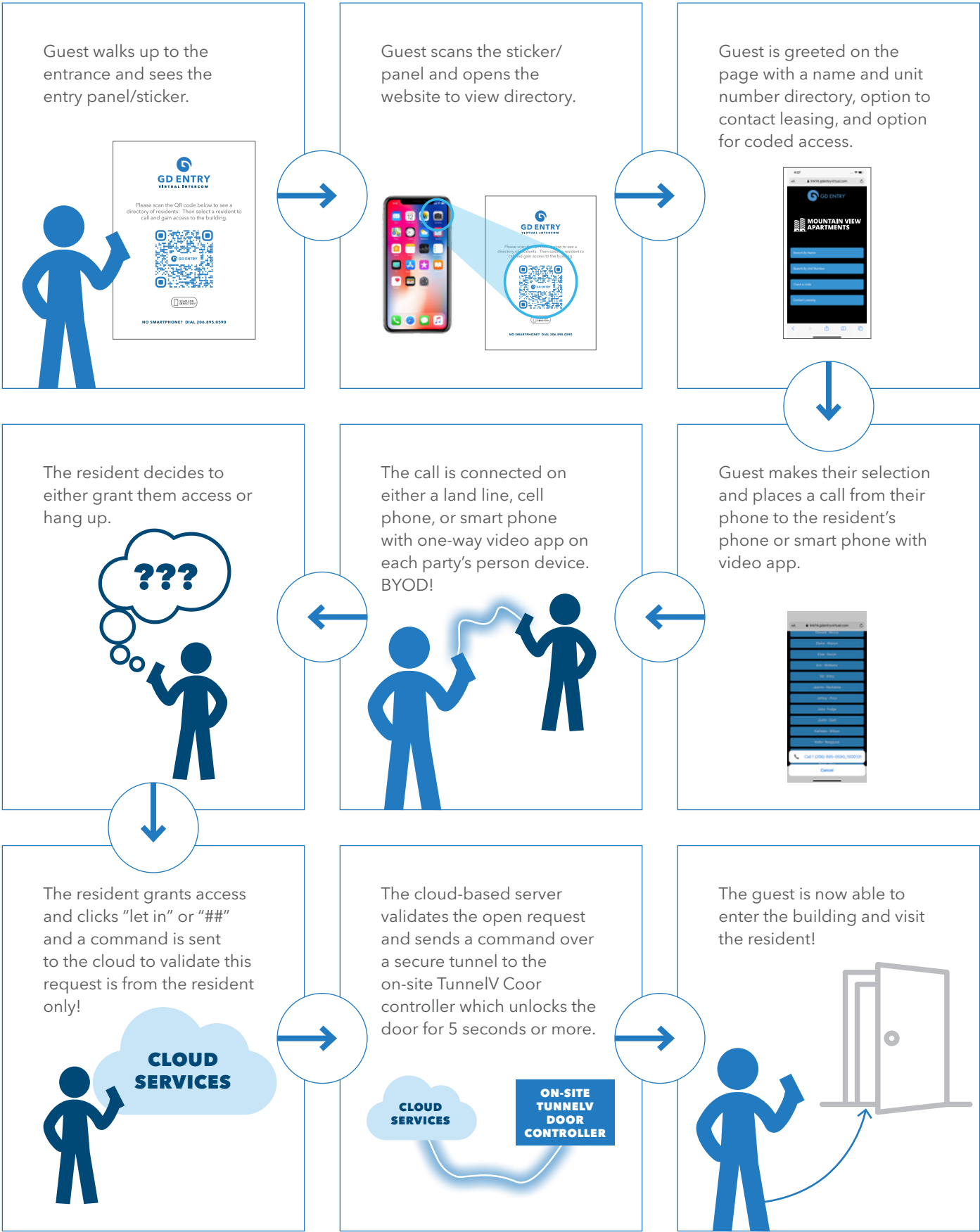
WHEN A VISITOR APPROACHES THE ENTRYWAY...

- Panel or sticker at entry, when scanned, turns the smartphone screen into the entry system. (place it right on your DoorKing)
- Non-smartphone visitors dial a number on the placard/sticker and an IVR allows them to dial by name for entry
- Tenants use smartphone apps to authenticate access, from anywhere

OPTIONAL CAMERA

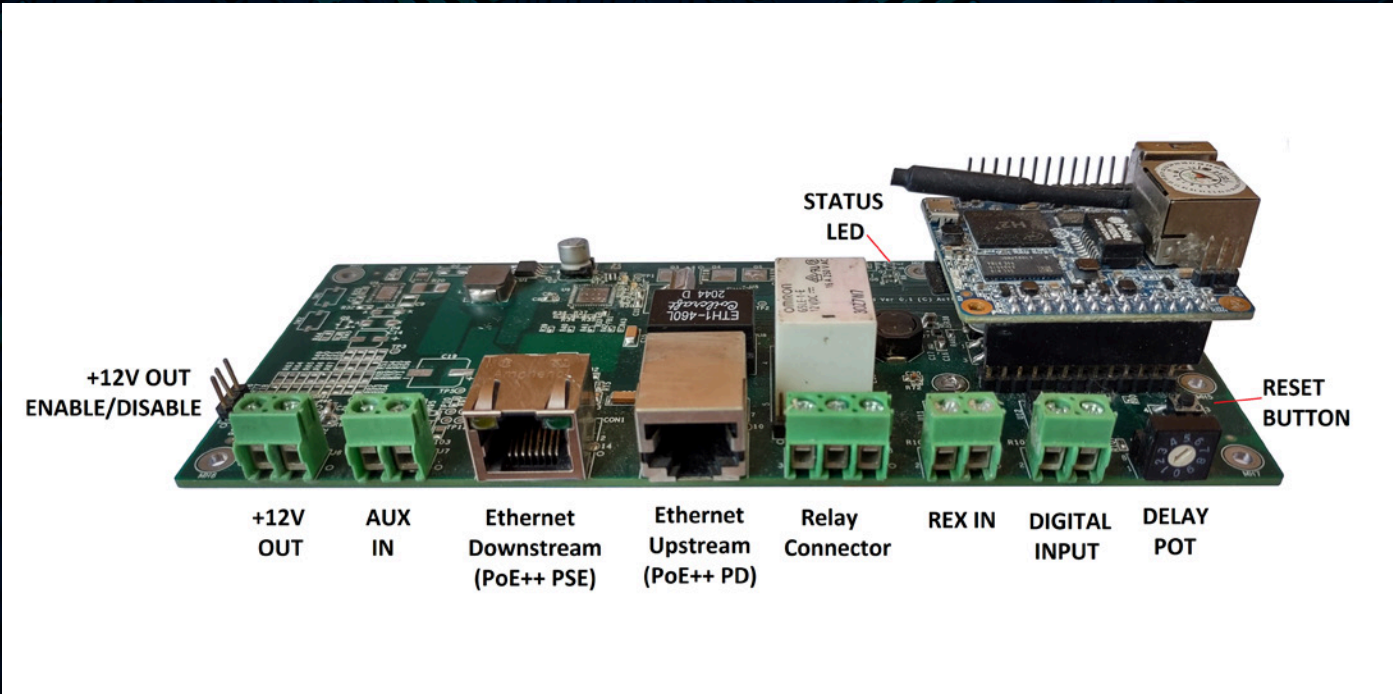
Installing the optional camera will allow a one-way video call via GD Entry's IOS/Android App, allowing the resident to see the guest at the door!

Sample Guest Walk Through



TunnelV Description

12VDC OUT ENABLE DISABLE	Enabling this will supply up to one amp output to power external devices such as Amazon Key For Business. It will simultaneously supply up to one amp out the common port of the relay, making hooking up an electric strike as easy as connecting two wires.
AUX IN	Option localized power via 12 VDC transformer instead of POE+/++ power
ETHERNET DOWNSTREAM	Passes POE to a single network device such as an IP camera; acts as a router to share devices and issue IP's.
ETHERNET UPSTREAM	Pulls DHCP by default, can also be a static IP, or connected. Accepts POE+ or POE++ to power the board and connected devices.
RELAY	Can operate as a standard dry contact relay or can supply up to 1 AMP/12VDC put the common rail, making hooking up a single strike a breeze.
REX	Standard request to exit input that will trigger the relay for the programmed period of time; i.e. exit button or motion sensor.
DIGITAL INPUT	Programmable interface for controlling other devices or automation.
RELAY POT	Easily adjust the relay trigger time in five-second intervals from 5 to 50 seconds.
RESET	Factory default the board.
LED	Simple color indication of board statuc makes this truly plug and play.
USB	Optional USB cellular data modem for deployment to sites with not internet.



TunnelV Specifications

PROCESSOR	All winner H2 (4x Cortex-A7 @ 1.2GHz); ARM Mali-400 MP2 GPU @600MHz												
MEMORY	512MB DDR3 SDRAM												
OPERATING SYSTEM	Linux												
STATUS INDICATION	Tri-Colour LED with the following indication: <table><tr><td>Blue</td><td>Power ON/Booting</td></tr><tr><td>Cyan</td><td>Boot Up complete Indication</td></tr><tr><td>Solid Green</td><td>Server Available (VPN Connected)</td></tr><tr><td>Red</td><td>Server Unavailable (VPN Not Connected)</td></tr><tr><td>Yellow</td><td>Relay On (Rex in/Digital in/Remote Open)</td></tr><tr><td>White</td><td>Reset</td></tr></table>	Blue	Power ON/Booting	Cyan	Boot Up complete Indication	Solid Green	Server Available (VPN Connected)	Red	Server Unavailable (VPN Not Connected)	Yellow	Relay On (Rex in/Digital in/Remote Open)	White	Reset
Blue	Power ON/Booting												
Cyan	Boot Up complete Indication												
Solid Green	Server Available (VPN Connected)												
Red	Server Unavailable (VPN Not Connected)												
Yellow	Relay On (Rex in/Digital in/Remote Open)												
White	Reset												
UPSTREAM ETHERNET	10/100 Ethernet controller with PoE++ PD												
DOWNSTREAM ETHERNET	10/100 Ethernet controller with PoE++ PSE												
POWER INPUTS	PoE/Aux IN												
POWER OUTPUT	+12V Out with Enable/Disable selectable jumper up to 1 Amp												
OTHER INPUTS	1 REX IN 1 Digital IN 1 Pot to select relay ON delay time (each position=5 seconds)												
DIMENSIONS	167mm x 70mm												



GD ENTRY
VIRTUAL INTERCOM