

# Bridgewater Village & Enclave at Bridgewater Subdivision Drainage Improvements

**Lonnie Anderson**

Principal

**Pape-Dawson Engineers**

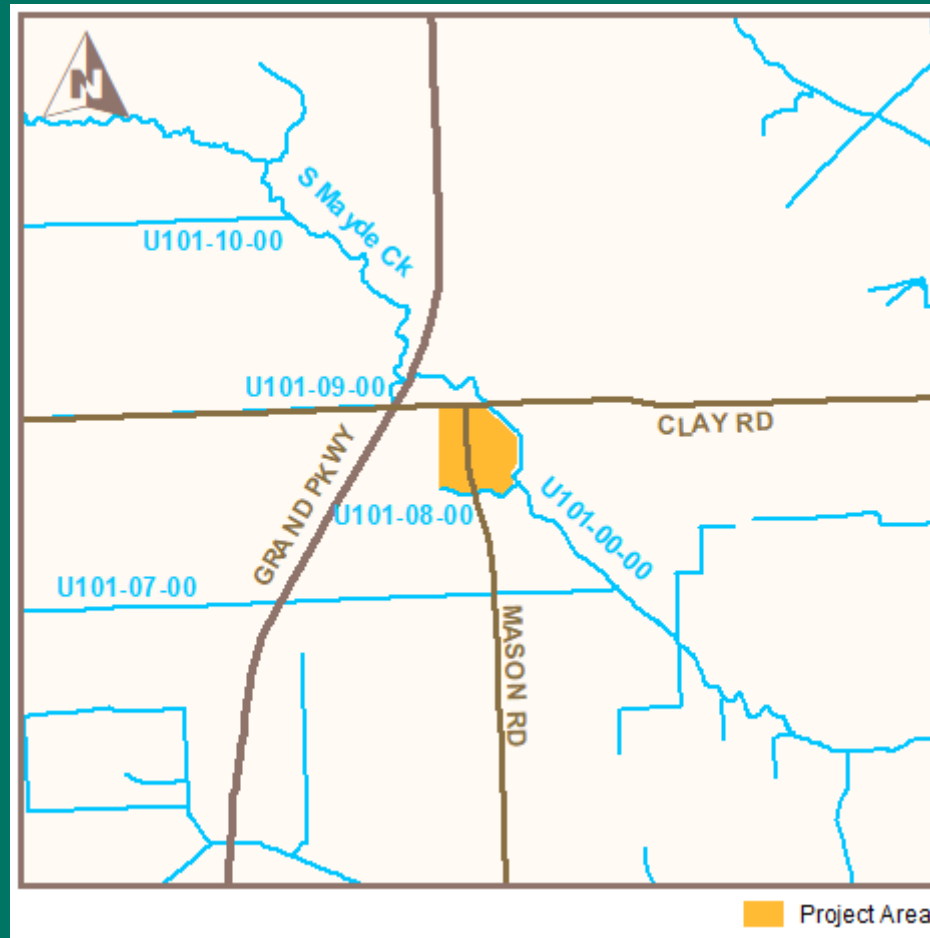


**PROJECT PROGRESS &  
COMMUNITY ENGAGEMENT**

---

2018 | BOND PROGRAM

# Study Location



# Study Purpose

- Assess historical flood risk
- Develop improvements to reduce flood risk within the subdivision from:
  - Storms up to the 1% Annual Chance (100-yr)
  - Local runoff
  - South Mayde Creek (U101-00-00)

# Overview

- Neighborhood built in 1999
- Curb and gutter with storm sewer system
- Drainage system is adequate for local rainfall
- **Issue:**
  - South Mayde Creek overflows Clay Rd at North Mason and sheetflows directly into neighborhood
  - Local drainage system was not designed for this additional flow



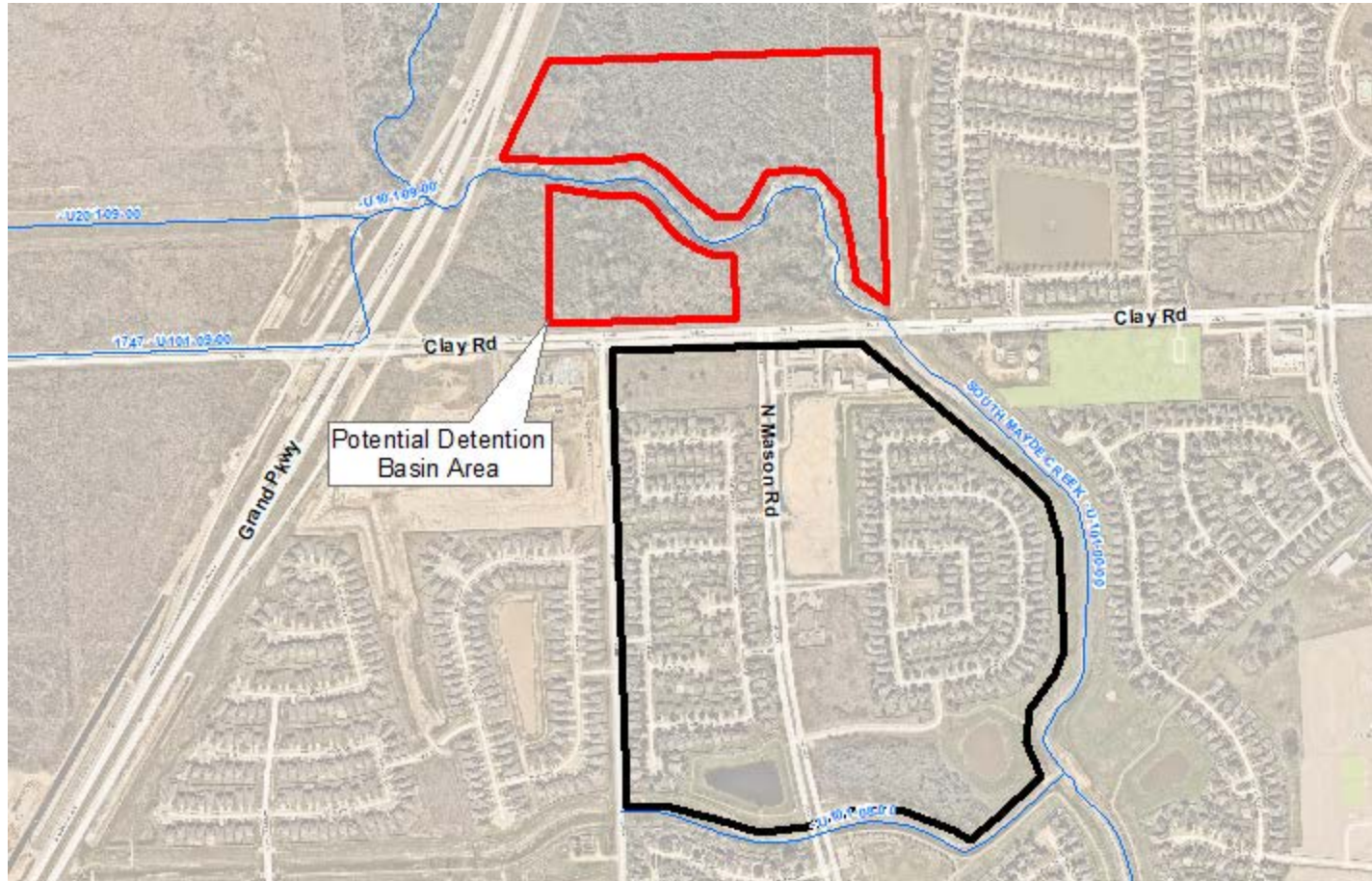


# Proposed Improvements

- Wet-bottom detention basin with a low-lying (1-2 ft) berm north of Clay Rd
- This will prevent overtopping of Clay Rd during a 1% Annual Chance (100-Yr) event



# Proposed Improvements

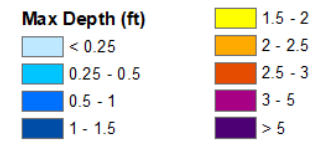


# Estimated Flood Depth 1% Annual Chance (100-Yr)

BEFORE



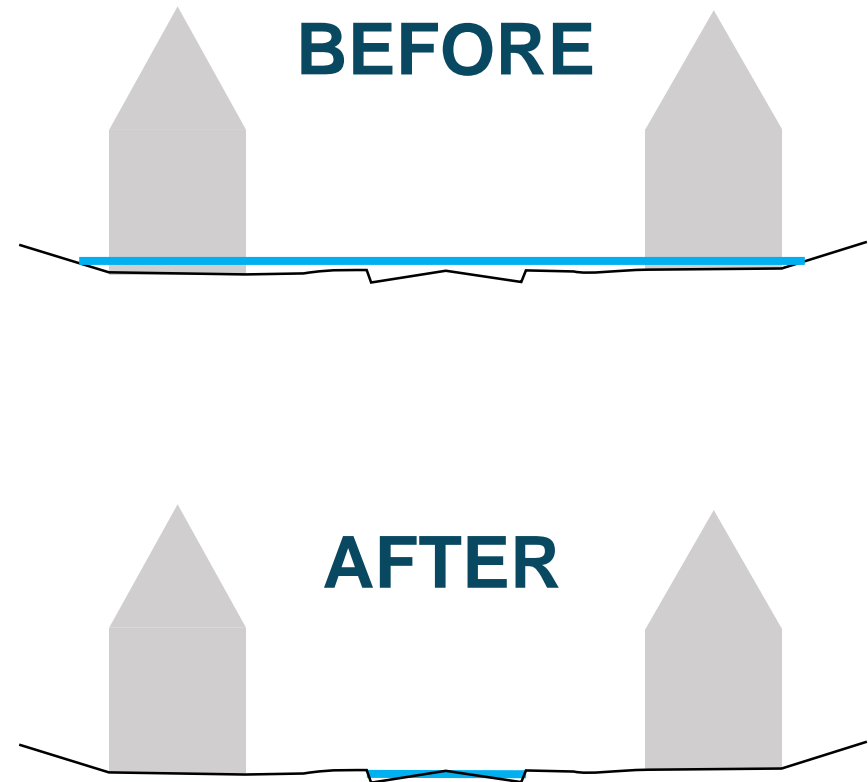
AFTER





# How will this project benefit your community?

- Will prevent overtopping of Clay Rd during a 100-yr storm
- This will eliminate flooding in homes
- This will reduce flooding in streets from up to 3-ft to 6-inches





# PROJECT PROGRESS & COMMUNITY ENGAGEMENT

---

2018 | BOND PROGRAM