



Welcome - Aviation Discovery Park will offer visitors and staff a comfortable place to gather, socialize, and relax, with picnic tables, benches, a grassy lawn, and a pavilion to provide shade and shelter from weather. The viewing area features benches facing the runway so visitors can watch take-offs and landings throughout the day. A static display airplane is also exhibited to illustrate the fundamentals of flight and provide visitors an up-close experience with an aircraft.



Inspire - The idea for Aviation Discovery Park was borne out of the desire to honor the history of the airport and the legacy of the great aviators of Ann Arbor.

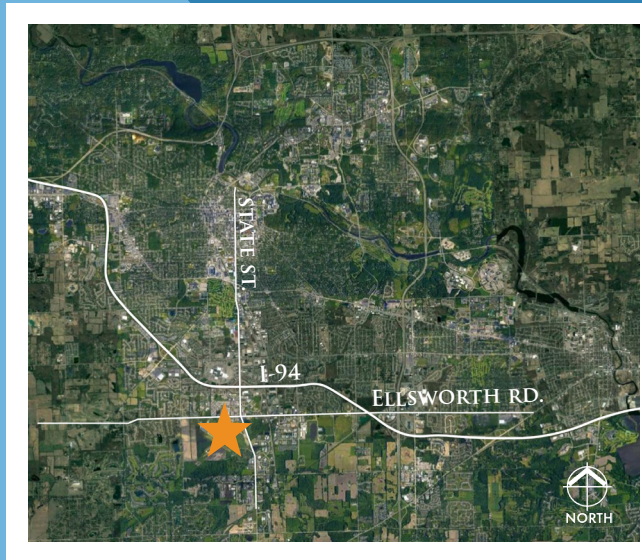
Educate - Education is a primary focus of the park, with informational signage illustrating the history of aviation in Ann Arbor as well as highlighting some of the people who have made significant contributions to aviation in our area. Additionally, Science, Technology, Engineering and Mathematics (STEM) stations provide hands-on opportunities for visitors to learn about weather, the physics of flight, aviation communications and more.



ANN ARBOR AIRPORT



The Ann Arbor Airport is a municipally-owned airport that is home to more than 180 aircrafts. It operates 24 hours a day, seven days a week and handles approximately 75,000 take-offs and landings per year. The airport offers a variety of public and private aviation services, and is home to two flight schools, ensuring the success of the next generation of pilots.



The Ann Arbor Airport is located south of Interstate 94 at the intersection of State Street and Ellsworth Road.



The proposed park is located to the west of the terminal building, between the entry drive and tarmac (see above). The park will welcome the guests to airport with an inviting, comfortable area to relax, watch airport activities, and learn about aviation.

AVIATION DISCOVERY PARK



*Welcome
Inspire
Educate*

For more information about the Aviation Discovery Park and to find out how to support this project, please visit:

www.a2ga2.org