

**WE-MERAKI**

BASED ON A TRUE STORY

# AFRICVILLE

THE PROMISED LAND

 **WE-MERAKI**  
FILMS





# SERIES SUMMARY

"In the face of discrimination, sabotage, and the tragic dismantling of Africville, the Colored Hockey League Saga' unfurls an epic tale of visionary leaders who dared to challenge societal norms. Follow the extraordinary journey of James Robinson Johnston, Henry Sylvester Williams, and James A. R. Kinney as they, under the guidance of mentor John Thomas Bulmer, establish the groundbreaking Colored Hockey League. As the league rises to prominence, it becomes a symbol of resilience for the Africville community. Yet, relentless antagonists, including white hockey players, a discriminatory church, and businessmen with economic motives, conspire to erase Africville from existence. The climax sees the heartbreaking demolition of Africville and the tragic demise of the once-hopeful league. 'Africville, the promised land' is a powerful narrative of triumph over adversity, highlighting the enduring legacy of those who fought for equality, even in the face of systemic injustice."





# SCRIPT SYNOPSIS

"AFRICVILLE, The Promised Land" is a compelling TV series that weaves together the remarkable stories of the founding fathers of the Colored Hockey League and the tragic rise and fall of Africville. Against the backdrop of discrimination, prejudice, and institutional neglect, this series reveals the antagonists that sought to suppress the vibrant Africville community while spotlighting the groundbreaking journey of the league's pioneers.

Get ready to embark on a journey through history with the likes of James Robinson Johnston,, Henry Sylvester Williams,, and James A. R. Kinney, masterfully portrayed by an ensemble cast. These extraordinary men were not just lawyers, businessmen, and promoters; they were also visionaries who challenged the norms of their time.



Working under the guidance of their mentor, Lawyer John Thomas Bulmer, the trio embarked on a remarkable journey to establish the Colored Hockey League. The league, first founded by the Black Baptist Church to do something fun that would increase the attendance, became a symbol of resilience and unity. Simultaneously, the series introduces antagonists from the outside world, including white hockey players, a white church, and white businessmen and local politicians with a shared agenda to erase Africville. These individuals, driven by prejudice, self-interest, and economic motives, conspired to undermine the Black community's existence. As the Colored Hockey League rose to prominence, gaining recognition and respect in the world of sports, the white hockey players, threatened by its success, aimed to sabotage it. Their actions posed challenges for the league's founders, who had to navigate not only the difficulties of establishing a sports league but also deliberate attempts to stifle its growth. The white church, driven by discriminatory beliefs, stood as a symbol of division within the community, wielding influence deep into the city's power structures and perpetuating a cycle of injustice. Meanwhile, white businessmen, fueled by economic interests, viewed Africville as an impediment to their plans for expansion and gentrification. They manipulated municipal decisions, leading to the placement of a slaughterhouse, an infectious disease hospital, and the city garbage dump in close proximity to Africville. Their intent was clear: to make life unbearable for its residents and pave the way for their forced relocation.

Against this backdrop, the resilient pioneers of the Colored Hockey League and the Africville community confronted not only the challenges within the sports world but also the systemic discrimination that permeated their daily lives. They found solidarity and strength in each other, channeling their energy into the fight for equality and recognition. In the series' climax, city officials, fueled by discriminatory beliefs and economic interests, finalized the decision to demolish Africville. The community, where residents had endured decades of neglect and mistreatment, was disassembled and destroyed. Families were forcibly removed from their homes, sometimes transported in city dump trucks, and relocated to public housing, while their beloved community was razed to the ground. This catastrophic event marked the end of an era for Africville and, tragically, the Colored Hockey League. The league, once a beacon of hope and unity, succumbed to the relentless pressures and obstacles placed in its path. The legacy of these remarkable men and their pioneering contributions to the world of hockey was obscured by the relentless tides of prejudice. "Pioneers on Ice: The Colored Hockey League Saga" tells a powerful and poignant story of resilience, discrimination, and the strength of the human spirit. The demise of Africville and the Colored Hockey League serves as a stark reminder of the profound injustices faced by these communities, yet also as a testament to the enduring legacy of those who dared to challenge the status quo, forever inspiring future generations to stand up for equality and justice.

# SCRIPT SYNOPSIS



# KEY CHARACTERS



## James R. Johnston

A successful lawyer and community leader who has built his empire on hard work and ambition. He appears to have it all - but beneath the surface, Johnston is struggling with deep-seated insecurities and a painful past. He is a co-founder of the Colored Hockey League.



## James A.R. Kinney

A lawyer and community leader, a charming and successful businessman who seems to have everything under control. He is devoted to his wife, his church and community and will do anything to protect them, but he also harbors a secret that threatens to unravel his carefully crafted life. co-founder of CHL.



## Henry Sylvester W Williams

A trinidadian lawyer, activist and founder of the Pan-African movement, as well as co-founder of the CHL.

## James Borden

Kinney's childhood best friend, and a pastor who reappears in his life after years of absence. Borden is a high spirited man, who has never quite settled down, but his return forces him to confront the secrets and trauma of their shared past. Co-founder of CHL.





## Aaron Pa Carvery

Aaron "Pa" Carvery was the last one to leave Africville. After city officials waved suitcases of money under his nose, he refused to leave. As a defenseman in Africville seashores, he was a notorious tough, hard fighter and a player. A strong young man that always stood up against injustices.

## John Bulmer

Antagonist, a businessman from Halifax, and one of the driving forces for Africville's diminish. He is filled with hate, racism and greed all at once. He is one of the driving forces, together with his church, and local business men, that will do all in their power to put an end to Africville and CHL.





NEW EXHIBITION RINK.

# COLORED HOCKEY CHAMPIONSHIP.

Friday, Feb. 26.

Eurekas vs. Seaside.

A GREAT BATTLE FOR THE  
CHAMPIONSHIP.

**DON'T MISS IT**

INTERMEDIATE.

Crescents vs. Willows.

Admission, 25 cts.; Salary, 35 cts.

"Get ready for a thrilling and emotionally charged journey with 'AFRICVILLE -The promised land' - a drama that explores the devastating consequences of buried secrets and the lengths men will go to protect their life."

**- We-Meraki Films**



# FILM TONE

- Intense
- Suspenseful
- Emotional
- Dramatic
- Mysterious
- Thought-provoking
- Poignant
- Introspective
- Complex





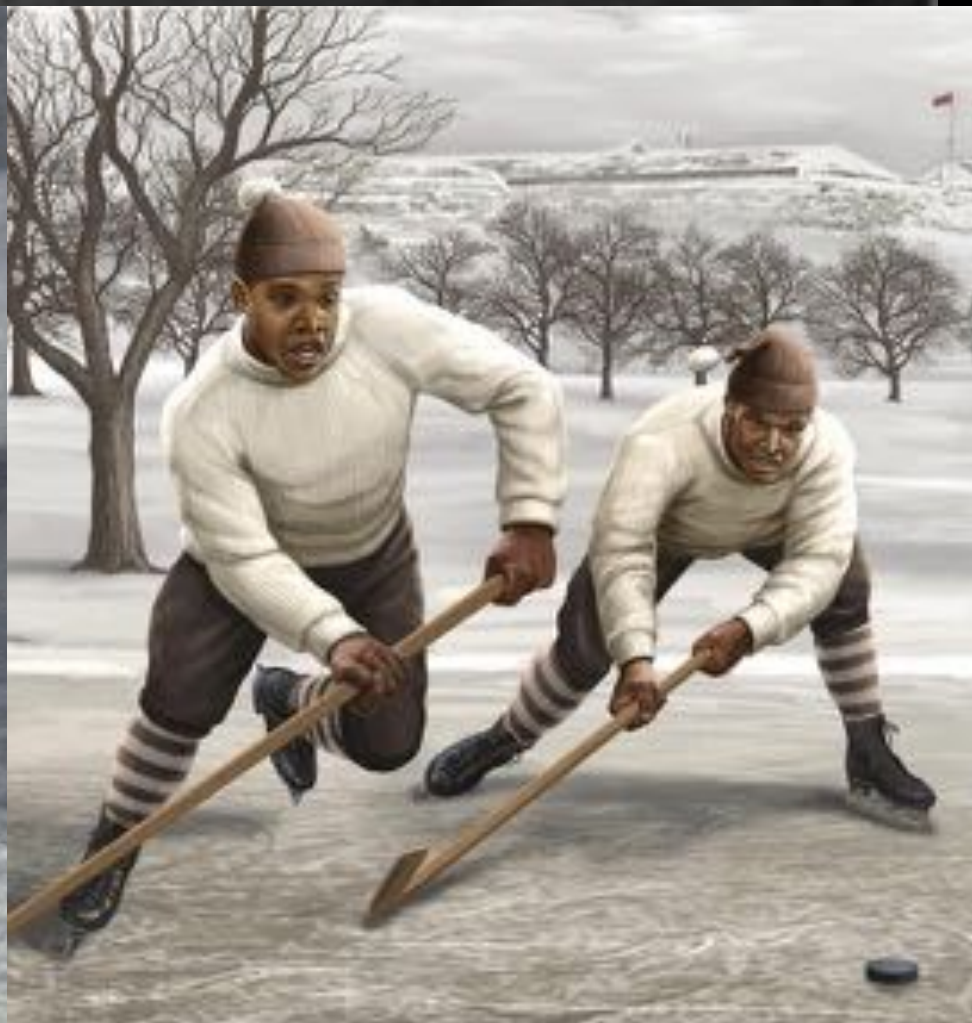
"As writers, we always envisioned 'Africville' as a visually stunning journey, filled with contrasts between dark and light, and the interplay between past and present."

**- We-Meraki Films**





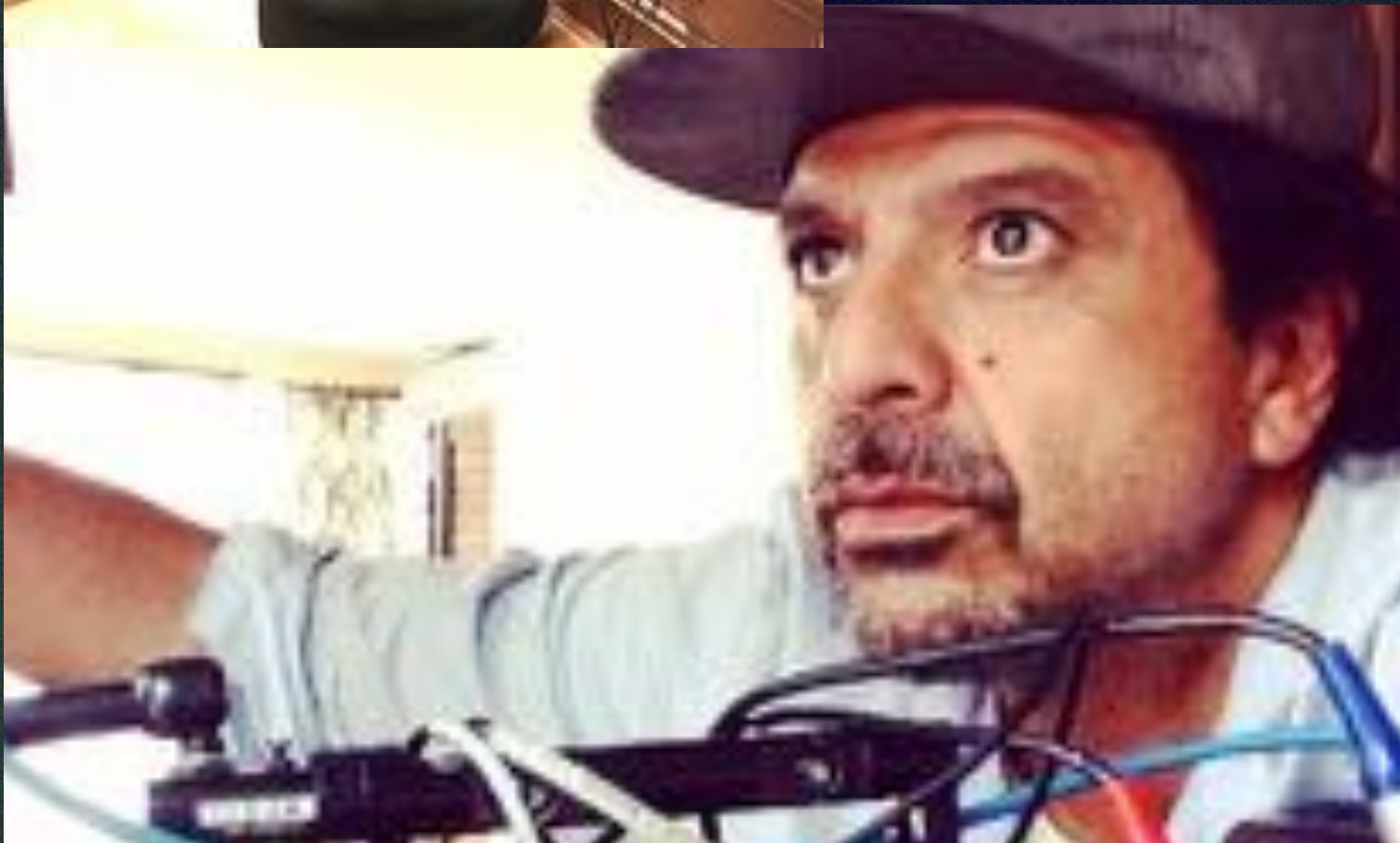
# VISUAL REFERENCE







# A WORD FROM THE WRITERS



Africville, the promised land, is a thrilling story about power, control, and consequences that challenges viewers to confront the illusions they create for themselves. The cast of intriguing and unpredictable characters all hide secrets, creating a web of intrigue and suspense. The story is also a journey of self-discovery and redemption, with moments of tenderness and vulnerability.



# CONTACT US

## EMAIL

[michael.mewe810@gmail.com](mailto:michael.mewe810@gmail.com)

## MOBILE

1.860.857.0072

## MAILING ADDRESS

77 Palmer ST.

Stamford, CT. 06907





