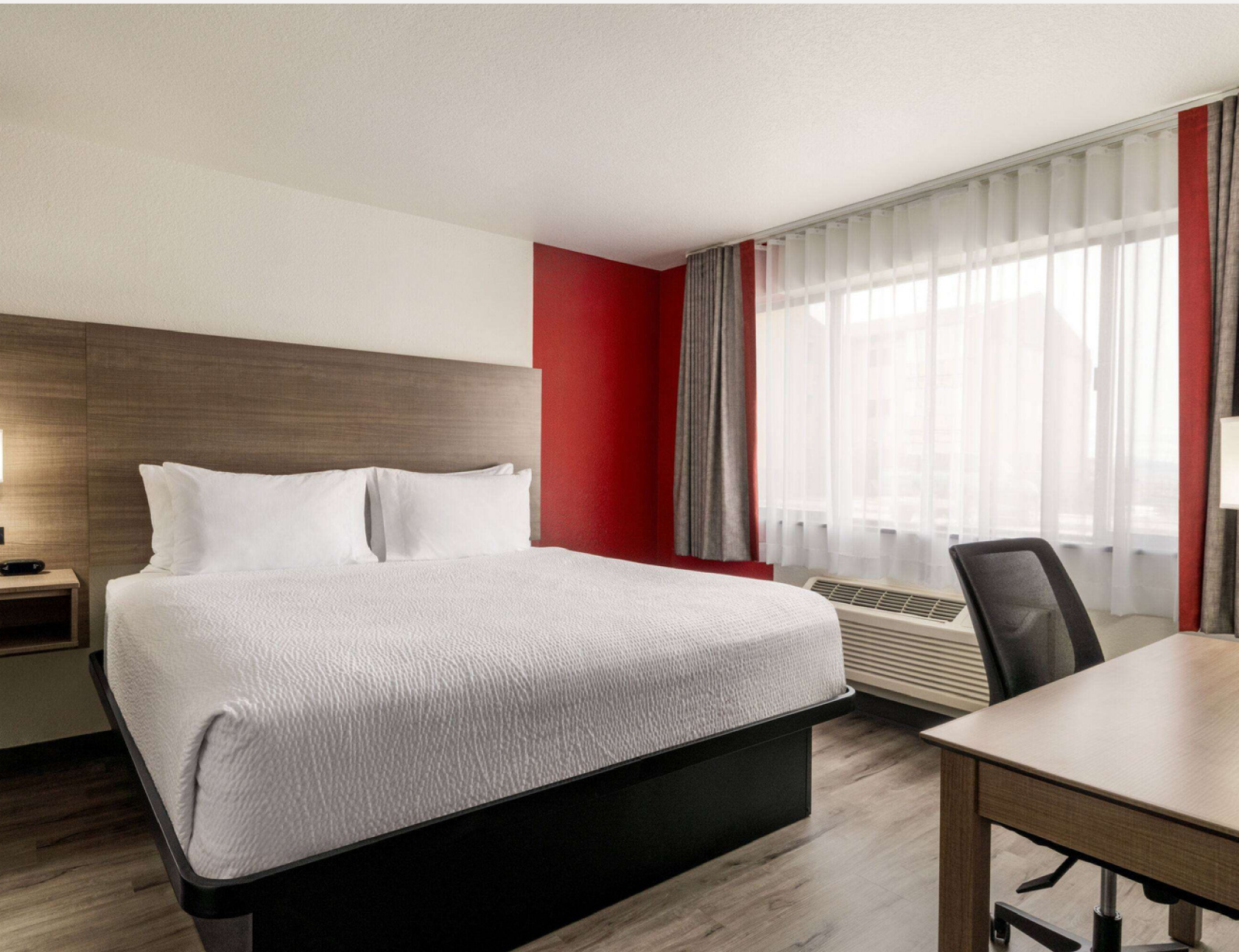




HELENA HOTEL

HOTEL DIRECTORY



Welcome

Welcome to Helena Hotel by Best Western

Situated in the charming city of Helena, Montana. Whether you're traveling for business or exploring the area at your leisure, our hotel is designed to provide you with a comfortable and convenient stay. Experience the warmth of our hospitality and the array of amenities tailored to meet your needs, ensuring a visit that's both pleasant and memorable.

Address: 1714 Eleventh Ave, Helena, Montana 59601, United States

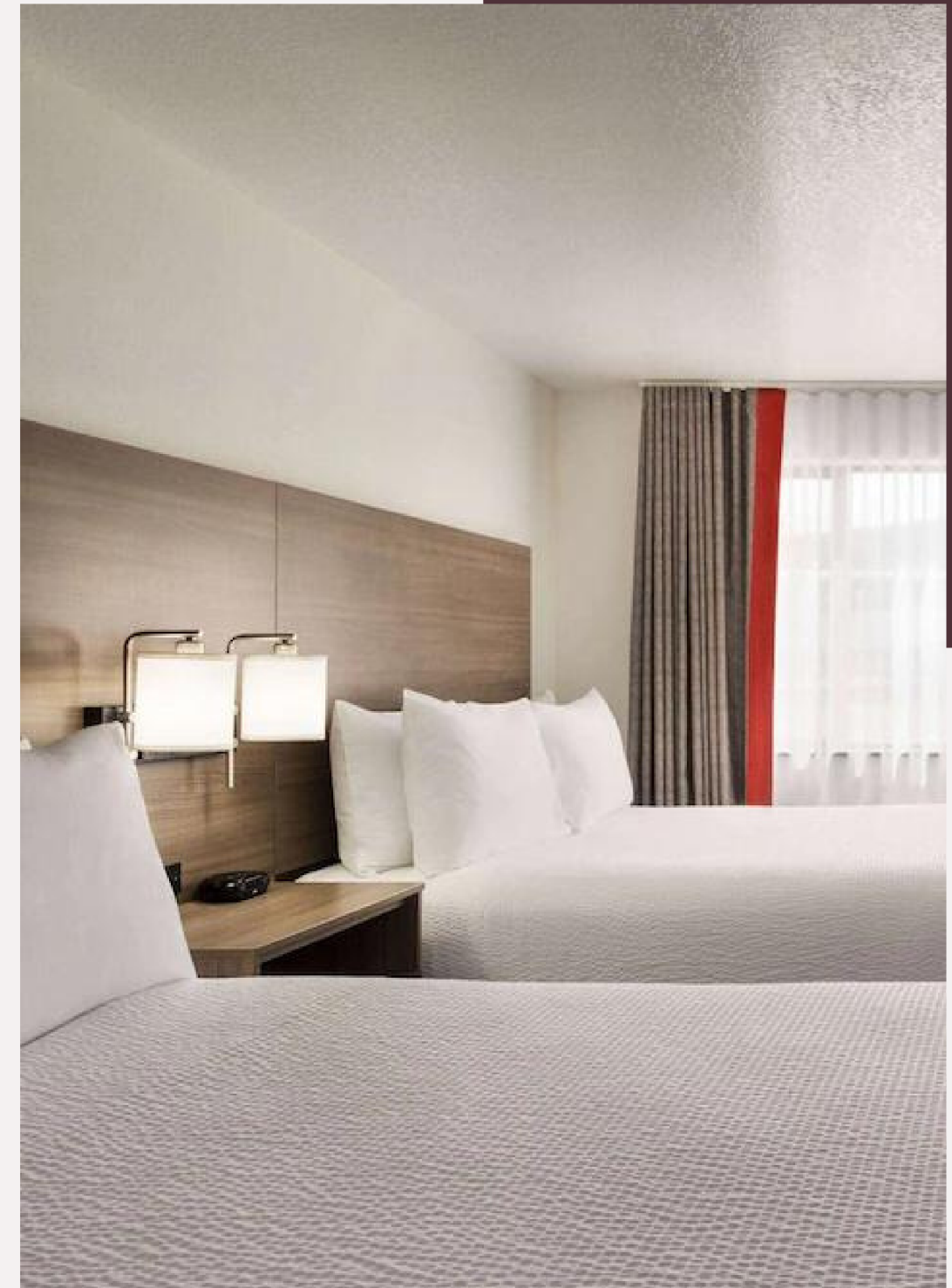
Hotel Phone Number: (406) 442-1770

Comfort and Convenience at Your Service

Start your day with a smile and a delicious continental breakfast! Stay in the loop with our complimentary Wi-Fi, and take advantage of our cozy business center. Need to freshen up your wardrobe? Our laundry and dry-cleaning services are here for you. Plus, getting around is a breeze with our complimentary parking and convenient airport shuttle.

Relax in our inviting non-smoking guest rooms, each equipped with a 43-inch flat-screen HDTV, mini-refrigerator, microwave, coffee and tea maker, desk, ironing amenities, hair dryer, and soothing bath products. Looking for a place to meet? We've got you covered with our meeting space, please contact front desk for details. Our friendly 24-hour front desk staff are always here to welcome you with a warm smile.

Traveling with a furry friend? They're welcome too, for a small additional fee. Please note that rooms with exterior entrances do not have elevator access. And as part of our commitment to ensuring a pleasant stay for all guests, we reserve the right to refuse service in accordance with our hotel policy.





Hotel Policies

Pet Policy

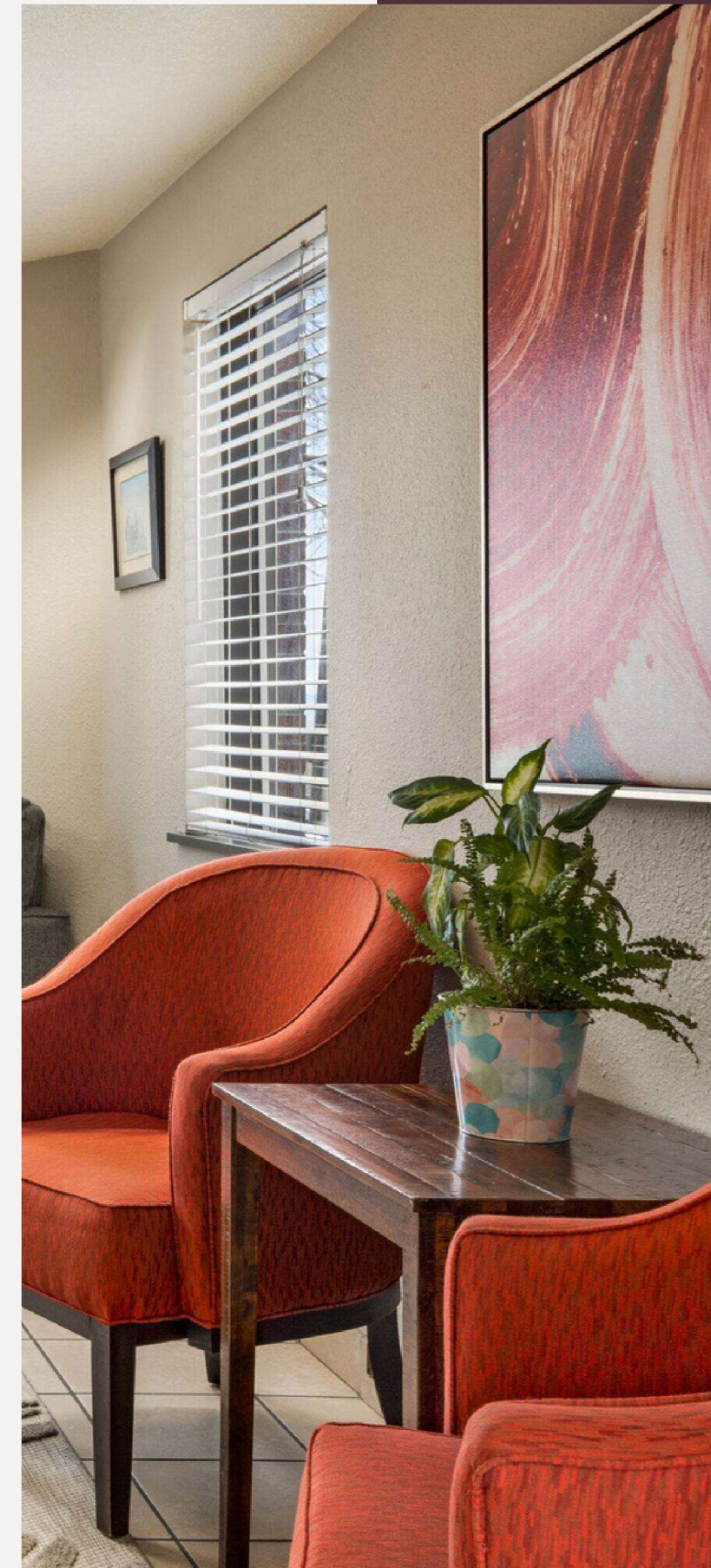
We are pet friendly and allow up to two dogs in a rented room. The size limit for any one dog shall be 80 pounds. Other pet types (e.g. cats, reptiles, etc.) not allowed upon check-in. Pet rate is \$25.00 per day. A refundable cleaning and damage deposit of \$150.00 is required upon check-in. If damage occurs or excessive cleaning is needed, the deposit can become non-refundable and the hotel may charge additionally to cover the costs of repair or cleaning.

Child Policy

Children 15 And Under Are Free In Room With One Paying Adult In Existing Bedding.

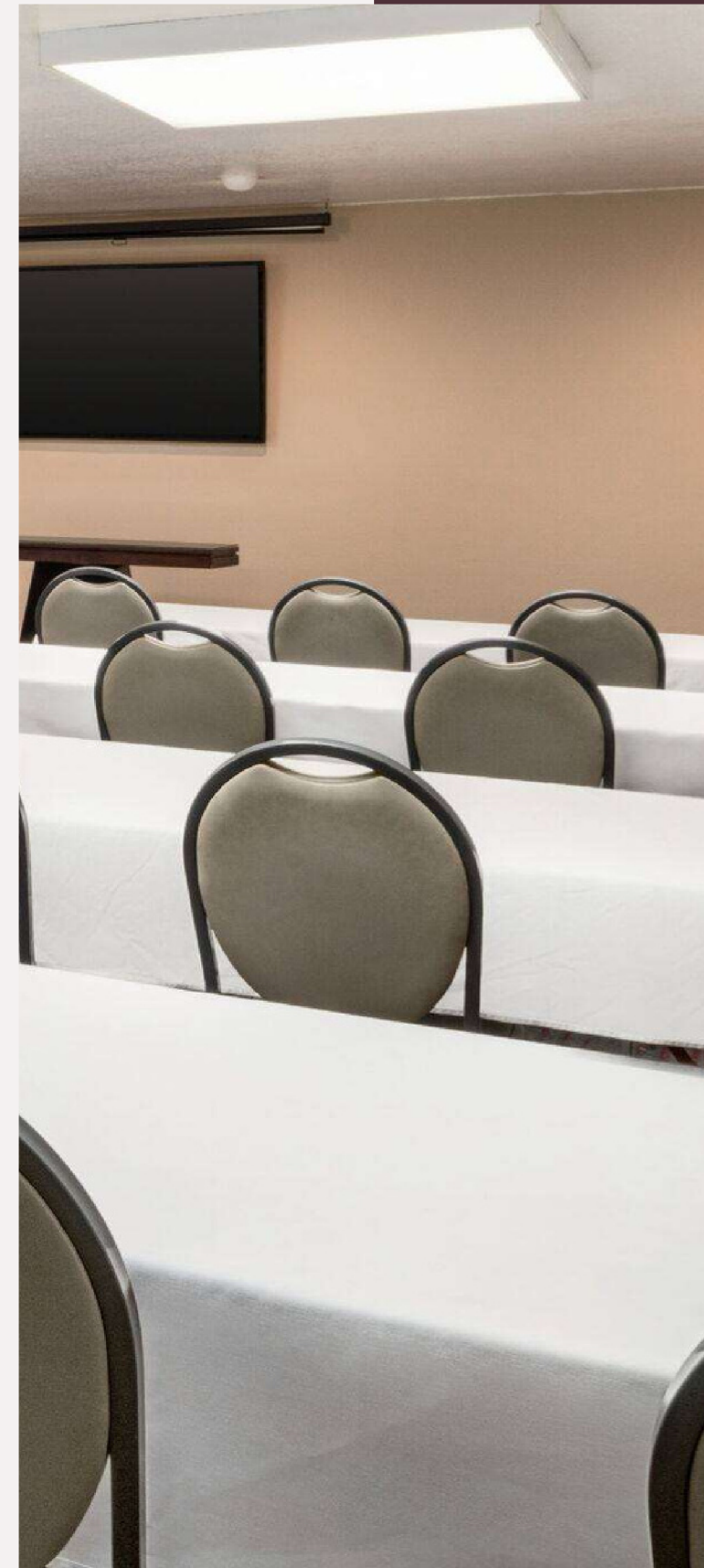
Hotel Features

- 100% smoke-free hotel
- Restaurant on-site, Family Roots Restaurant open 7 a.m. to 2 p.m.
- Limited service hotel
- 24-hour front desk
- Interior/exterior corridors, exterior entrance rooms do not have elevator access
- Late check out available upon request, half room rate before 3 p.m., full room rate after 3 p.m. or later
- Free wireless internet access available in public areas and all guest rooms
- Business center open 24 hours
- Printer available
- Sundry shop available
- Complimentary Toiletries/Amenities Available upon request



Hotel Features

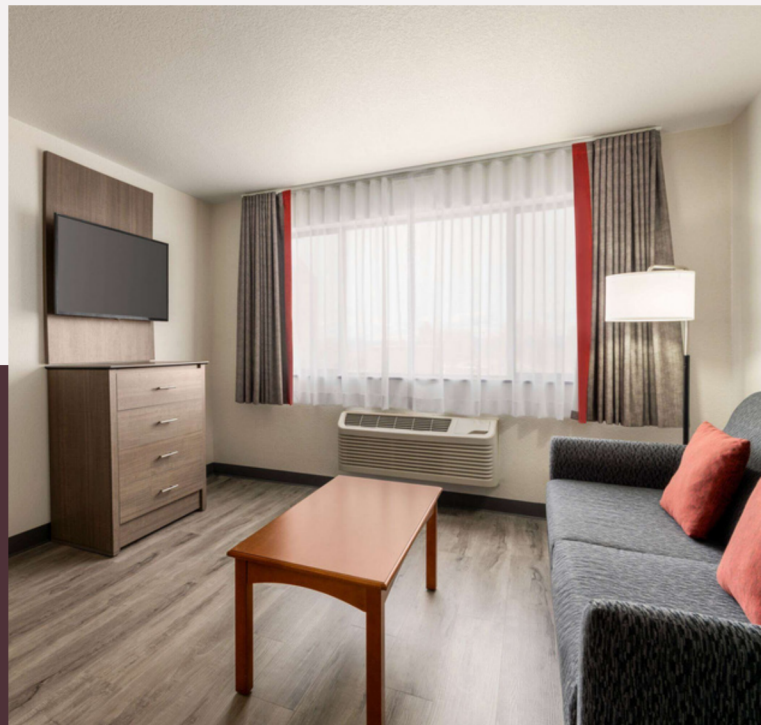
- Fax services, \$1 per page
- Photocopy services
- Conference services
- Video conferencing
- Meeting facilities, Mount Helena rooms
- Banquet facility, restaurant operates (please reach out to Family Roots for details)
- Conference facilities, Mount Helena room
- Cold weather hook-ups
- Ice/vending machine



Hotel Features

- Free parking available 24 hours
- High-speed Internet access complimentary
- EV charging stations
- Motorcoach parking available 24 hours complimentary
- Truck/RV parking available 24 hours, offsite, complimentary
- Gym access to Premier Fitness Across the street (please see front desk for key fob)





Room Features

- Mountain view available
- Self controlled heating/cooling
- Cable/satellite TV, remote control, color TV
- Coffee/tea maker
- Microwave
- Refrigerator
- Hair dryer
- Iron/ironing board
- Desk/work area electrical outlet at desk level
- High-speed internet access
- Direct dial phone
- Wake-up call
- Sofabed available



ACCESSIBLE FEATURES

- Accessible Parking and Loading Zones
- Marked accessible parking spaces, to include accessible van spaces for lift-equipped vehicles
- Covered passenger pickup/drop-off area
- Accessible Exterior Routes, Building Entrances and Public Spaces
- Sidewalks and walkways
- Entrance doors that accommodate a wheelchair
- Lobby check-in counter
- Public restrooms
- Hallways and corridors to all facilities and guest amenities

Nearby Attractions

- 5.00 mile(s) from St Peter's Health, hospital focusing on providing exceptional and compassionate care, treating the whole person, and striving for higher standards
- 4.90 mile(s) from Boeing, a leading global aerospace company that develops, manufactures, and services commercial airplanes, dense products, and space systems
- 4.00 mile(s) from Morrison-Maierle, is a company that specializes in civil, structural, mechanical, and electrical engineering and surveying, planning, and science
- Attractions
- 0.03 mile(s) from Montana State Capitol Complex, historic capitol building built in 1902, self guided tours available.
- 1.30 mile(s) from Cathedral of Saint Helena, Roman Catholic cathedral architect modeled by architect AO Con Hefulis after the Vorivkriche in Vienna, Austria build in 1908
- 20.00 mile(s) from Gates of the Mountain, located on the Missouri River part of the Lewis and Clark expedition. Recapturing a tour boar historical tour with 1200 feet rock formations and wild life.
- 2.00 mile(s) from Last Chance Gulch Walking Mall, the actual gulch in which gold was discovered in 1964. The thoroughfare which was built down the Gulch was originally named Main Street.
- 0.06 mile(s) from Montana Historical Society, museum tracing state history and culture with displays of native artifacts and Charles Russell's art.
- 0.06 mile(s) from Last Chance Tours, tour train and trolley offering historic tours of Helena aboard an open air tour train viewing mansion district, cathedral, governors home, miners village and the old fire tower.
- Dining
- 2.20 mile(s) from Brewhouse, Full Service, American, Open for: lunch, dinner restaurant and pub
- 1.70 mile(s) from Lucas, Full Service, Italian, Open for: dinner fine Italian traditions with a contemporary flair
- 1.80 mile(s) from On Broadway, Full Service, Italian, Open for: dinner Italian dishes, seafood, and steak
- 0.50 mile(s) from Overland Express, Full Service, American, Open for: lunch, dinner American bar and grill offering steaks, seafood & burgers
- Adjacent to Melaque, Full Service, Mexican, Open for: lunch, dinner, authentic Mexican food
- 1.80 mile(s) from Shellys Country Corner, Full Service, American, Open for: breakfast, lunch, dinner, locally owned and operated 24-hour diner
- 2.10 mile(s) from Silver Star Steak House, Full service, American, Open for: lunch, dinner, relaxed excellent quality locally sourced goods with certified Angus Beef Montana's premiere steakhouse.

Nearby Attractions

- Family Roots Restaurant, on premises, Full Service, American, Open for: breakfast, lunch, open 7 a.m to 2 p.m.
- Education
- 2.20 mile(s) from Carroll College, a private liberal arts college recognized for its excellence. offering smaller classes, more personalized attention, and a warm and welcoming atmosphere
- 1.00 mile(s) from Helena College University of Montana, a public community college established in 1939
- Nearby Cities
- 89.00 mile(s) from Great Falls, home of the CM Russel Museum devoted to the artist known for images of the American West. Great Falls is located on the Missouri River hosting the National Historic Trail Interpretive Center with many historic exhibits.
- 98.00 mile(s) from Bozeman, located in the Rocky Mountains noted for the Montana State University Museum of the Rockies which traces the area's history and T Rex specimens and planetarium.
- Recreation
- 3.00 mile(s) from Mount Helena, Mount Helena has several trail access points. The trailhead features several trails including the popular 1906 trail. It is a moderately difficult trail that takes you to the summit of Mount Helena, a two-hour hike.
- 0.05 mile(s) from Bill Roberts Golf Course, established in 1935 the course features an 18-hole, 6785-yard championship course beautifully maintained providing a park-like setting right in the center of Montana's capital city.
- 18.00 mile(s) from Lewis & Clark National Forrest, scenic forest stretches 20.8 million acres through central and north-central Montana. The forest is comprised of island mountain ranges bisected by the Continental Divide and Missouri River and includes 6 ranger districts.
- 1.30 mile(s) from Lewis & Clark Brewing Company, the headquarters of award-winning beer and great live music.



Thank You

W W W . B W H E L E N A . C O M

Thank you for choosing Helena Hotel by Best Western during your recent visit to Helena, Montana. We are thrilled to have had the opportunity to serve you and hope that your stay was both comfortable and memorable.

Our team takes great pride in providing exceptional service and we're delighted to hear that we met your expectations. Your satisfaction is our top priority and we're grateful for the trust you've placed in us.

We look forward to welcoming you back in the future.

Until then, safe travels and our warmest regards.