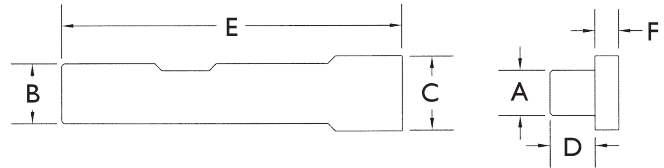


# ACCESSORIES

## Saw Arbors

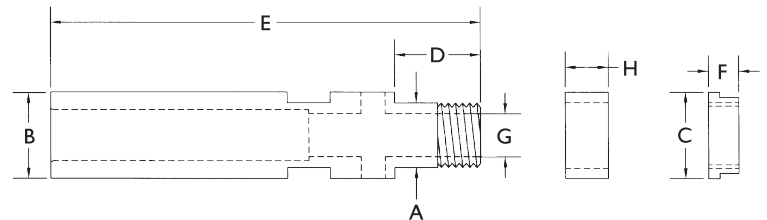


**DESCRIPTION:** KEB Saw Arbors are manufactured from hardened aircraft quality alloy steel and ground to a concentricity of .0002 Total Indicator Reading (TIR) or better. Thru-coolant arbors are available on request.



ARBORS										
EDP NO.	DESCRIPTION	A	B	C	D	E	F	G	H	
MA125	ARBOR FOR 1/8" ID SAW	1/8	1/4	N/A	.200	2 7/8	.200	-	-	
MA250	ARBOR FOR 1/4" ID SAW	1/4	3/8	N/A	3/8	2 7/8	.200	-	-	
MA250-1	ARBOR FOR 1/4" ID SAW	1/4	1/2	N/A	3/8	2 7/8	.200	-	-	
MA312	ARBOR FOR 5/16" ID SAW	5/16	3/8	N/A	3/8	2 7/8	.200	-	-	
MA375	ARBOR FOR 3/8" ID SAW	3/8	1/2	5/8	3/8	2 7/8	.200	-	-	
MA500	ARBOR FOR 1/2" ID SAW	1/2	1/2	3/4	3/8	2 7/8	.200	-	-	
MA625	ARBOR FOR 5/8" ID SAW	5/8	3/4	1	7/8	4	.250	-	-	
MA875	ARBOR FOR 7/8" ID SAW	7/8	3/4	1 1/4	7/8	4	.250	-	-	
MA1000	ARBOR FOR 1" ID SAW	1	3/4	1 1/2	1	4	.250	-	-	
MA1000-1	ARBOR FOR 1" ID SAW	1	1	1 1/2	1	5	.250	-	-	
MA1250	ARBOR FOR 1 1/4" ID SAW	1 1/4	1	1 3/4	1 3/8	5	.250	-	-	

**DESCRIPTION:** Extra Capacity Arbors are manufactured to the same precision specifications as our standard Arbors with the addition of an ID bore, spacer and cap designed to hold a variety of tooling in addition to the saw.



EXTRA CAPACITY ARBORS										
EDP NO.	DESCRIPTION	A	B	C	D	E	F	G	H	
MA250-125XC	ARBOR FOR 1/4" ID SAW 1/8" BORE TO HOLD ADDITIONAL TOOL	1/4	3/8	3/8	1/2	2	.225	1/8	.200	
MA375-1875XC	ARBOR FOR 3/8" ID SAW 3/16" BORE TO HOLD ADDITIONAL TOOL	3/8	1/2	1/2	1/2	2 1/2	.175	3/16	1/4	
MA375-250XC	ARBOR FOR 3/8" ID SAW 1/4" BORE TO HOLD ADDITIONAL TOOL	3/8	1/2	1/2	1/2	2 1/2	.175	1/4	1/4	

Call (866) 395-4438 Toll Free to Order or  
 Fax your Order to (440) 953-9209  
[www.kebkollets.com](http://www.kebkollets.com)