

Dilated irregular channels

Anastomosing channels

Red cell extravasation

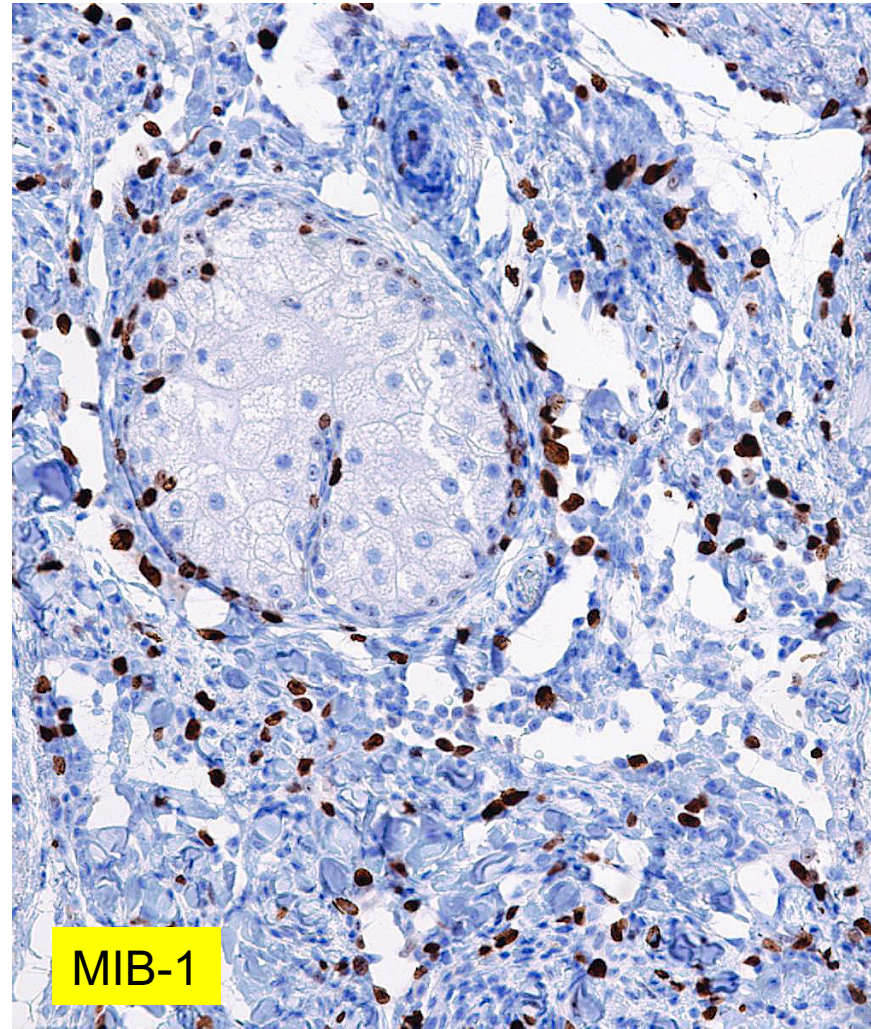
Lymphoid aggregate

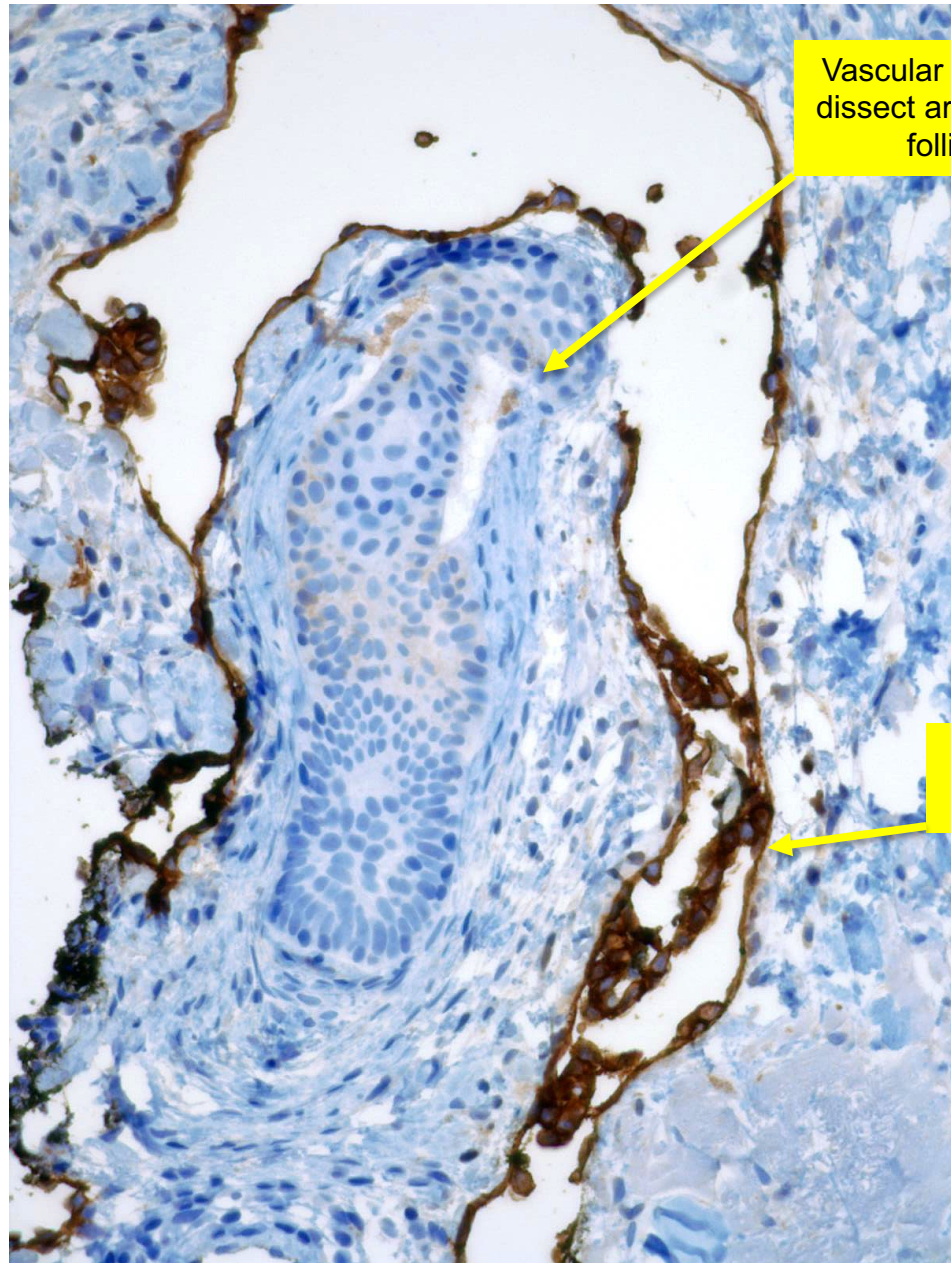
Small vessels protruding in vascular space: promontory sign

Dissecting Collagen

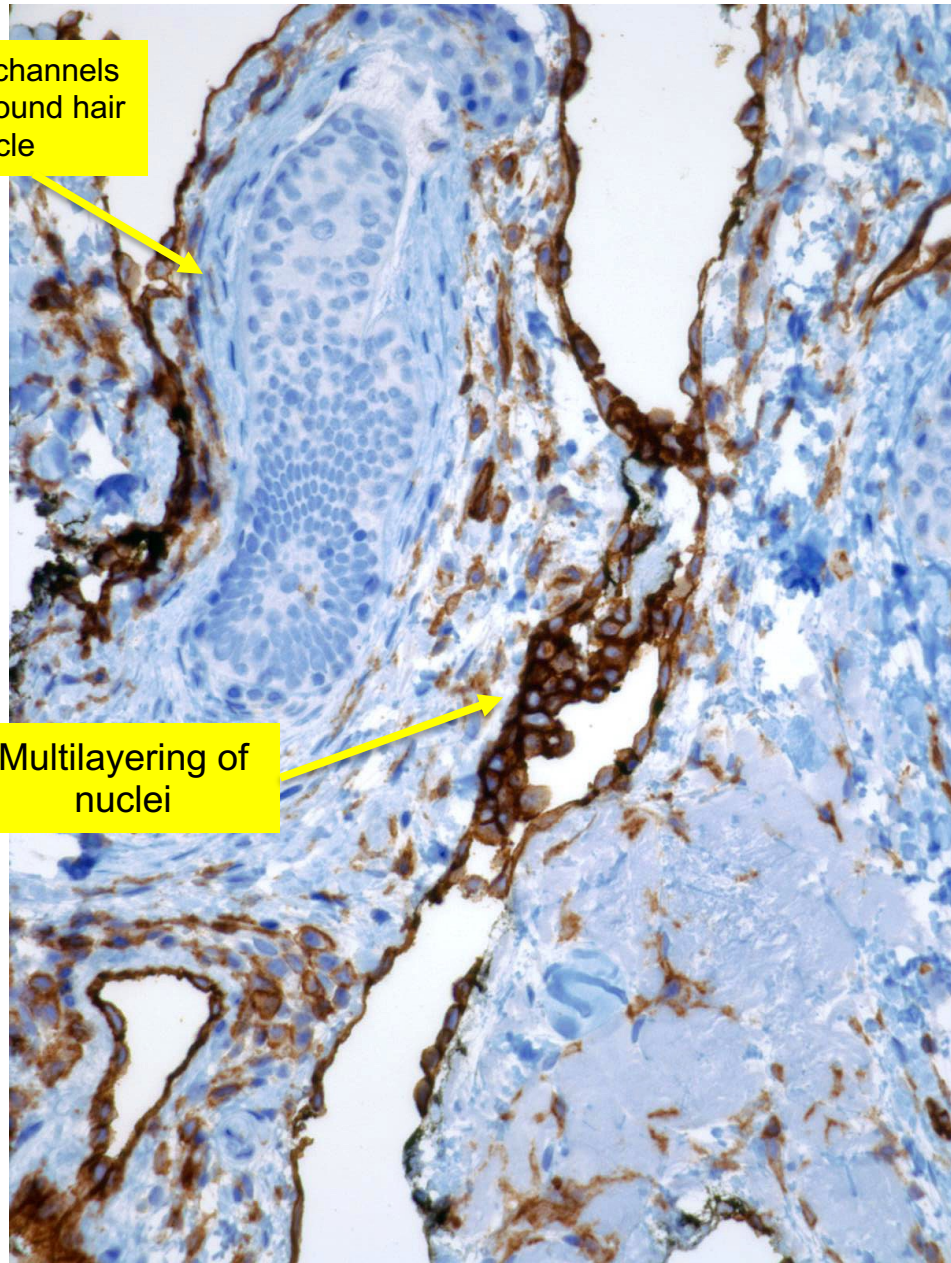


- **Clinical Information:** 76/M with red-purple spreading rash with swelling of the left face near the ear
- **DIAGNOSIS:**
  - SKIN, LEFT FACE, EXCISION/BIOPSY:
    - ANGIOSARCOMA
    - IHC: Nuclei positive for CD31, CD34, and Podoplanin; negative for HHV8
- **Teaching Points:**
  - Look for dissection of collagen
  - Look for multilayering of hyperchromatic nuclei with high proliferative index (by MIB-1, right)
  - Ancillary IHC: ERG (nuclear), CD31, CD34
  - Some angiosarcomas can be associated with lymphedema and exhibit lymphatic phenotype (Podoplanin+)
- **Minimal Diagnostic Criteria:**
  - Dilated, irregular & anastomosing vascular channels
  - Channels dissect dermal collagen bundles
  - Vascular lumens are lined by multilayered nuclei, hyperchromatic and pleomorphic
- **Differential Diagnosis:**
  - Lymphangioma
  - Kaposi sarcoma
  - Masson tumor





**Podoplanin (D2-40)**



**CD31**

