

# LANDYNEWS .ONLINE

THE FREE ON-LINE MAGAZINE FOR LAND ROVER OWNERS



THE HOME FOR LAND ROVER NEWS  
LANDYNEWS.ONLINE



# EDITORIAL

Hi and welcome to the second test issue of our all new magazine for Land Rover news.

In these pages you will find news from the wonderful world of Land Rovers, complete with high resolution photographs.

The team choice for this issue must go to the RAF Discovery 5, for the front cover shot alone. The full article can be found on page five. The close second is the limited edition Range Rovers on page 15. You won't get a more "limited" edition than these!

Nothing more than professional news and press releases from Land Rover and other associated companies and manufactures'.

**ALL FOR FREE!**

Please contacts us if you're interested in sponsoring this on-line news production or if you'd like to advertise your products?

[landynewseditors@gmail.com](mailto:landynewseditors@gmail.com)



## IN THIS ISSUE;

<b>Terry Grant's Record At Goodwood</b>	<b>3</b>
<b>Discovery and the RAF</b>	<b>5</b>
<b>Selfridges Defender</b>	<b>8</b>
<b>"The Land of Land Rovers"</b>	<b>10</b>
<b>Tusk rhino trail</b>	<b>11</b>
<b>Land Rover Legends</b>	<b>13</b>
<b>The Range Rover Astronaut Edition</b>	<b>15</b>
<b>Discovery Sport - technology</b>	<b>20</b>
<b>The Range Rover Family</b>	<b>24</b>
<b>Nottinghamshire4X4Response</b>	<b>27</b>
<b>Back page shot, the Velar, the SUV of the year 2018</b>	<b>28</b>



## **LAND ROVER AND TERRY GRANT SMASH WORLD RECORD AT GOODWOOD FESTIVAL OF SPEED**

- **Land Rover and Terry Grant have smashed the Guinness World Record for the fastest mile in a car on two wheels at the weekend's Goodwood's Festival of Speed**
- **Terry's 2:24.5 run was a highlight of the Goodwood Festival of Speed, set in a 575hp Range Rover Sport SVR that topped 60mph on the record-breaking run**
- **The Guinness World Record time – achieved in a last gasp attempt on Sunday afternoon – is an improvement of over 30 seconds on the old record, set by Terry Grant himself in 2011**
- **Land Rover's Goodwood Festival of Speed presence also included the largest single batch of cars to ever take on the hill, as 70 Land Rovers celebrated the brand's 70<sup>th</sup> anniversary**





**Land Rover and Terry Grant smashed a world record at this week's Goodwood Festival of Speed, with a two-wheel speed run in the new Range Rover Sport SVR. Terry's 2:24.5 run up the famous hillclimb broke Terry's old record for a mile travelled in a car on two wheels, set in 2011, by more than 30 seconds.**

**Terry Grant flipped the Range Rover Sport SVR up on to two wheels with the use of a ramp, before hitting speeds of up 60mph on Goodwood's famous hillclimb as he set the new Guinness World Record time.**

**Terry snatched the record in a dramatic last gasp attempt on Sunday afternoon, having attempted four runs earlier in the weekend, none of which Terry managed to complete.**

**The Range Rover Sport SVR is a 575hp performance SUV, capable of 0-60mph in 4.3 seconds and a top speed of 174mph – with four wheels on the road, at least. The Range Rover Sport only required one modification for the world record run, a tweak to its differential to allow the car to deliver more power to the two wheels on the ground – both of which will be pumped up to 90PSI.**

**Terry Grant is a multiple world-record holder, with 25 Guinness World Records already to his name, and with this latest record, Terry has bested a 2:55 run that he himself set at Goodwood in 2011.**

**Stunt Driver, Terry Grant, said:**

***“It really shouldn't be underestimated how difficult a two-wheeled speed run like this is; you are always fighting to keep the car balanced right on the edge, as it tries to tip either one way or the other.***

***You need to be conscious of everything, from the camber of the road to the strength of the wind. Thankfully, conditions were excellent and the Range Rover Sport SVR was the perfect precision tool for the job.”***

**The world record was not the only amazing Land Rover moment of the Festival of Speed, as 70 historic and important Land Rovers took to the hill on Thursday at 13:25 in what was the largest batch of cars to ever tackle the famous route in one go. From 1948, to 2018, the parade of cars celebrated 70 years of one of Britain's most iconic automotive brands.**





## **LAND ROVER PARTNERS WITH RAF CHINOOK DISPLAY TEAM**

- **Land Rover announces vehicle partnership with RAF Chinook's**
- **Partnership comes in a year of major anniversaries for both brands, with Land Rover celebrating its 70<sup>th</sup> and the RAF celebrating its centenary**
- **Land Rover will supply a new Discovery with bespoke RAF Chinook wrap to support ground activities throughout 2018 and 2019**

**Land Rover will be assisting the famous RAF Chinook Display Team with ground support throughout the remainder of 2019. The new partnership comes during a historic year for both parties, with Land Rover celebrating its 70<sup>th</sup> anniversary, and the RAF celebrating its 100<sup>th</sup>. The RAF Chinook Display Team, based at RAF Odiham in Hampshire, aims to demonstrate the RAF Chinook helicopter's capability.**

**As well as part of the RAF Chinook Display Team, the crew are also in a fully operational Squadron where they combine their daily training demands with practicing their display sequence.**

**Land Rover will provide the team with a new Discovery, complete with bespoke Chinook Display Team wrap. The car will provide ground support during off-season activities in 2018 and then for the full display schedule in 2019. The capable Discovery will be able to carry seven crew members at one time supporting both the air and ground team throughout the partnership.**

**Jaguar Land Rover UK Marketing Director, Anthony Bradbury, said:**

***“It’s an absolute privilege for us here at Land Rover to be involved with the spectacularly talented crew of the RAF Chinook Display Team. Land Rover and the military have gone hand-in-hand since the very beginning, and our business is still a huge supporter of the armed forces. Since 2014 Jaguar Land Rover has hired more than 850 Wounded, Injured and Sick ex-servicemen, and this latest partnership is just another example of how we intend to continue our support.”***



**The Chinook helicopter and the Land Rover Discovery have more in common than one might think; both have been carefully engineered to carry people and heavy equipment. But while the Discovery can carry seven crew members in comfort and tow an impressive 3.5 tonnes, the Chinook is able to carry up to 55 troops or up to 10 tonnes.**



**This is just the latest partnership making full use of the Discovery’s class-leading versatility and capability. In recent years it has assisted in ground operations for Scotland’s Charity Air Ambulance and helped the Cleveland Mountain Rescue Team navigate tricky terrain to save lives to name a few.**



**First introduced in 1989, the Land Rover Discovery was gearing up for its 30<sup>th</sup> anniversary in 2019 and has already sold more than 1.3 million units throughout the world.**



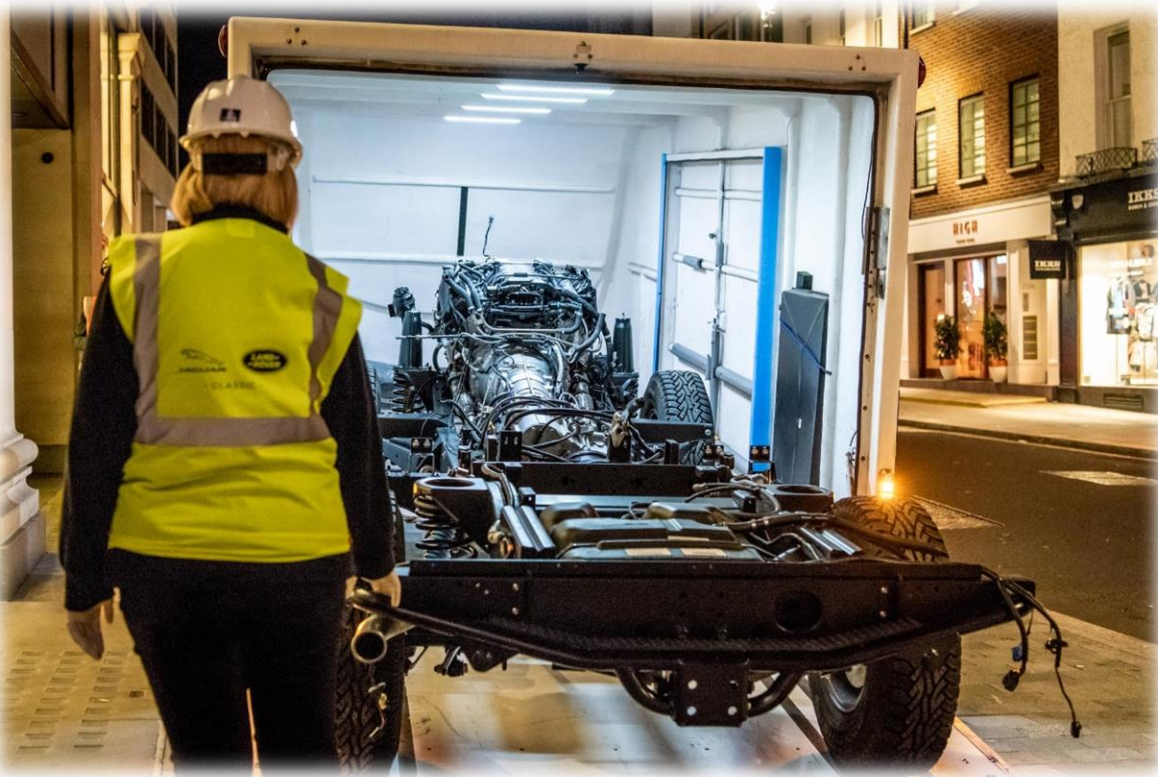
**A spokesperson for The Chinook Display Team said: *“The Chinook Display Team is overjoyed to be working alongside Land Rover, in what has already been a very positive and enjoyable venture. The addition of this vehicle to the team has only happened as a result of the kind support we have received and will enable a huge amount of flexibility on the display circuit. With a significant ground footprint of engineers and aircrew, not to mention a growing inventory of equipment and products which is taken to public shows, the ability to move flexibility whilst flying the flag for the United Kingdom is one the team values greatly. The wrapping of the vehicle has also been kindly donated by Land Rover and is just another example of the extraordinary support the team has been afforded.”***





# SELFRIDGES LAND ROVER DEFENDER

- Land Rover Classic begins assembly of a unique Defender Works V8 at Selfridges in London by rolling the chassis through a first-floor window
- One-off soft-top Defender Works V8 will form the centrepiece of the new menswear department at Selfridges' flagship Oxford Street store
- Bespoke Land Rover Classic project was deconstructed to fit through a first-floor window and was reassembled in front of customers over the following four days
- Visitors to Selfridges Oxford Street store in London watched the live exhibit as a skilled team of Land Rover Classic technicians built the bespoke Defender

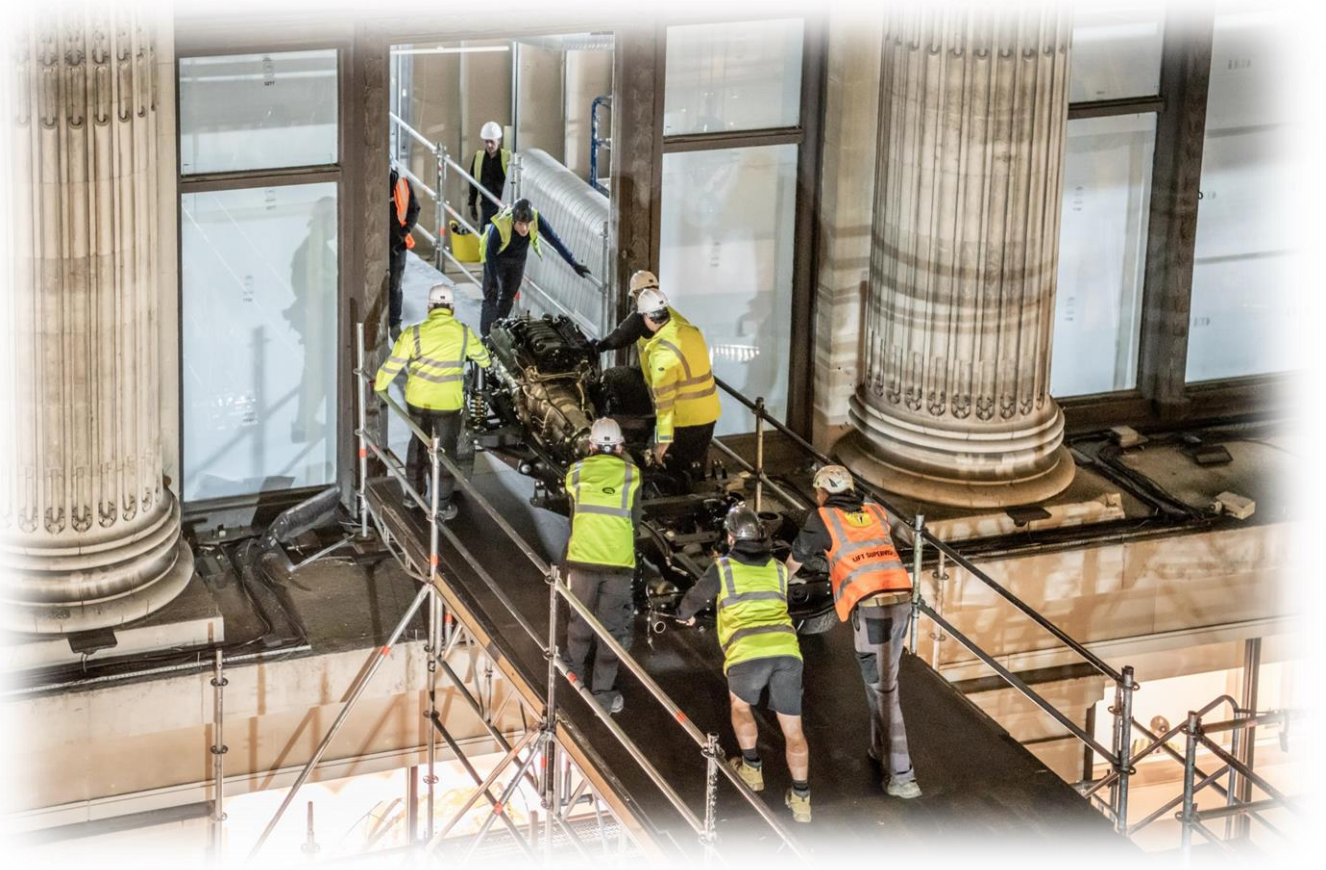


**A one-off Land Rover Defender made a dramatic entrance at Selfridges in London, entering the famous department store through a first-floor window.**

**The unique Selfridges Edition Defender Works V8 forms the centrepiece of the new-look menswear department at the Oxford Street store, but not before technicians from Land Rover Classic reassembled the vehicle in full view of shoppers.**

**To fit through the first-floor window, the specially commissioned Defender was dismantled and a team of experts will rebuild the vehicle over the next four days. Once complete, the one-off vehicle will be placed under a protective cover while Selfridges puts the finishing touches to its new menswear department ahead of its official opening on 29 October. The Selfridges Edition vehicle began life as a 2016 Defender 110 Pick Up but the Land Rover Classic team have turned it into a 110 Soft Top, complete with a branded hood in trademark Selfridges yellow. The bodywork is finished in contrasting Bronze Green and a heritage style folding windscreen and half-height doors complete the open-air look.**





**Jaguar Land Rover Classic Director, Tim Hannig, said:**

*“Our skilled engineers and craftsmen can tailor vehicles to meet any request, from applying unique paintwork or interior trim to delivering far-reaching mechanical enhancements. The Selfridges Edition shows what can be achieved and we can’t wait to see it take pride of place in the famous department store.”*

**The Selfridges Edition features chassis and powertrain upgrades introduced on the Defender Works V8 – 70<sup>th</sup> Edition, which was announced in January to celebrate Land Rover’s 70<sup>th</sup> anniversary year. Featuring a 405PS V8 that produces 515Nm of torque, an eight-speed ZF automatic transmission plus uprated brakes and suspension, the limited-run Works V8 derivatives are the fastest and most powerful Defender models ever produced. When the finished vehicle was finished at the end**

**of October, the period-style seats featured chocolate leather upholstery with ivory cross-stitching while the addition of a Jaguar Land Rover Classic Infotainment System will combine period charm with cutting-edge audio technology, providing satellite navigation, DAB digital radio and Bluetooth connectivity in a classically styled head unit.**





# THE LAND OF LAND ROVERS

- **Land Rover continued its 70<sup>th</sup> anniversary celebrations with a visit to a remote location deep in the Indian Himalayan region also known as the ‘Land of Land Rovers’**
- **A fleet of classic Series Land Rover models dating from 1957 provides a vital transport link between Maneybhanjang and Sandakphu in West Bengal**
- **The village of Sandakphu sits at an altitude of 3,636m and is only accessible by a steep and rocky track using a fleet of 42 thoroughly well-maintained Series Land Rovers**
- **Watch the film here: <https://youtu.be/YNXU1IR2LR8>**
- 

**Maneybhanjang, West Bengal, India,** – Land Rover took its 70<sup>th</sup> anniversary celebrations to new heights by visiting a remote rural community in West Bengal that relies on a fleet of classic models for its very survival.

Known as the ‘Land of Land Rovers’, the rural location in deep in the Himalayas is reliant on a fleet of meticulously maintained Series Land Rovers dating back as far as 1957.

A film, released today, highlights the spectacular 31km journey made often by residents of Maneybhanjang in West Bengal, India to Sandakphu for their means of living. Towering gradients, rock-strewn pony tracks and treacherous weather are just some of the hazards faced on a daily basis by the residents and their Land Rovers on the journey to the hilltop village, which sits at an altitude of 3,636m.

Land Rover’s team visited the remarkable collection of Series models, which provides a vital role for the community as reliable and unstoppable all-terrain transport.



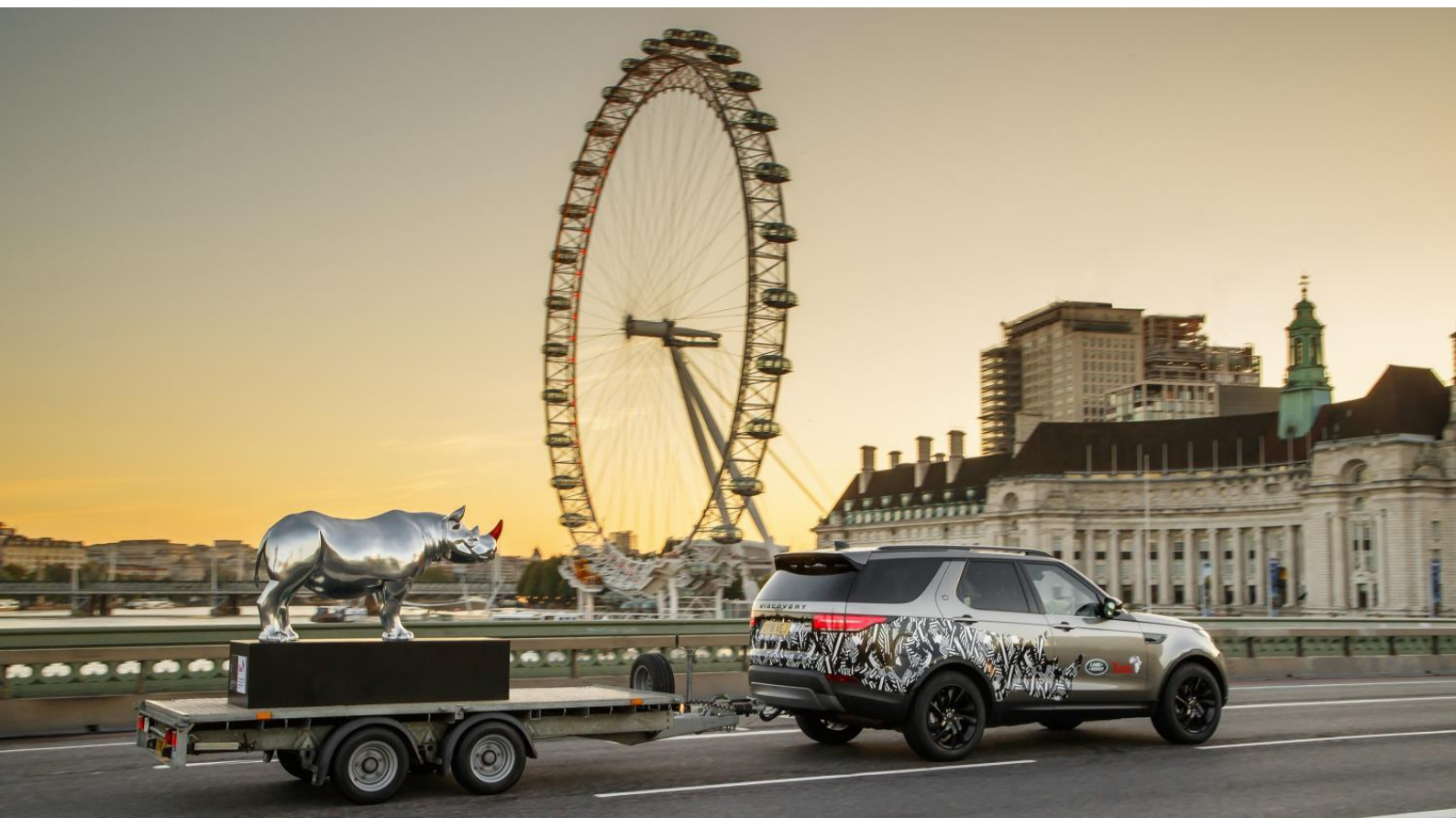


# Tusk Rhino Trail

2018 marked 70 years since the original Land Rover made its debut at Amsterdam Motor Show in 1948. Land Rover marked this milestone with a series of celebrations throughout 2018, including a special broadcast, record-breaking convoys and a display in London's Design Museum. See the film here:

<https://youtu.be/YNXU1IR2LR8>

- Land Rover has created a unique rhino design in Trafalgar Square, London, as part of the Tusk Rhino Trail
- Gerry McGovern, Land Rover's Chief Design Officer, is one of 21 internationally respected artists and designers to embellish one of the 1.2m-long rhinos
- Project aims to raise funds for the conservation of this endangered species with a charity auction on 9 October and celebrates World Rhino Day on 22 September
- Land Rover has been an official partner of the Tusk wildlife conservation charity, helping to reach some of the world's most remote locations, for 15 years







**Watch Gerry McGovern introduce his unique design here:**  
<https://www.youtube.com/watch?v=SI7rl1lxd-I&feature=youtu.be>

- **The Rhino trail ran from Monday 20 August to Saturday 22 September across London. To discover more visit [tuskrhinotrail.com](http://tuskrhinotrail.com)**

Land Rover has embarked on an unexpected expedition to preserve the precious African rhinoceros and its habitat by joining an urban rhino trail across London. A gleaming Land Rover rhino model, embellished by Land Rover's Chief Design Officer Gerry McGovern, made its debut in central London in the latest collaboration of a 15-year relationship with Tusk.

The unique 1.2m-long rhino sculpture was towed into Trafalgar Square in support of the Tusk Rhino Trail, to aid conservation projects for the endangered species. The initiative involves 21 sculptures donated and decorated by leading figures from the worlds of art and design installed at prominent locations across the capital.

The design of the Land Rover rhino uses specialist paint techniques from Land Rover's state-of-the-art manufacturing process to achieve a highly durable liquid metal finish.

Gerry McGovern, Chief Design Officer, Land Rover, said:

***"I wanted to celebrate the magnificence of this unique creature, so my rhino is covered in a chrome finish. The idea being that because of the highly reflective nature of chrome it would be seen from a long distance, consequently creating awareness of the plight of this animal in Africa. The red painted horn signifies the absurdity of this beautiful animal being hunted for such a small part of its overall being."***





# LAND ROVER LEGENDS 2019

**After a successful and very well-received inaugural event in May 2018, Land Rover Legends - the ultimate show for Land Rover connoisseurs, collectors, preservationists, restorers and enthusiasts - returned to Bicester Heritage on 25 and 26 May, 2019.**



**The event will again showcase the very best examples of the Land Rover, from original vehicles to renovated and restored cars, including prototype and pre-production vehicles, production models, rare conversions, military derivatives, bespoke conversions and much more, from the 1948 Series 1 to the very latest models. New for 2019 will be weekend camping facilities at Bicester Heritage, and evening entertainment on the Saturday, allowing Land Rover fans to make a splendid weekend of it.**

**Land Rover Legends will celebrate another series of Land Rover birthdays, including the 30<sup>th</sup> anniversary of the Discovery - the vehicle launched in 1989 that arguably saved the company - and the 25<sup>th</sup> birthday of the second-generation Range Rover, the P38A.**

**The focus of Land Rover Legends is on authenticity and originality, with the event featuring carefully-curated static displays of important Land Rovers as well as the National Awards for Most Original, Best Restored and Best Bespoke Land Rover.**

**The event will bring together the vehicles, the people and the stories behind the global name to celebrate everything special about Land Rover past and present. Fans of the marque will be able to hear the fascinating stories from the people associated with the vehicles, either as engineers and designers, users in a variety of situations such as exploration and adventure, and preservationists.**

**Every Land Rover attending can be part of the show, with a dedicated forward parking area for all visitors arriving in a Land Rover, while Land Rover clubs will be invited to display their vehicles and also to demonstrate them. Carefully-selected exhibitors and traders will be located in and around Bicester Heritage's magnificent main exhibition hangar, showcasing the top Land Rover restorers, specialists and associated suppliers.**

**The Land Rover celebration takes place against the appropriately authentic and beautifully restored backdrop of the former military buildings at Bicester Heritage. Once a WW2 RAF bomber station, Bicester Heritage is now the UK's only hub for historic motoring excellence, and its buildings and airfield provide a superb setting for Land Rover Legends. Tickets for this exciting event were available from November 2018. For more information please visit: [www.landroverlegends.com](http://www.landroverlegends.com)**







# RANGE ROVER REACHES NEW HEIGHTS WITH ASTRONAUT EDITION BUILT TO CELEBRATE PARTNERSHIP WITH VIRGIN GALACTIC

- Exclusive Range Rover Astronaut Edition produced by Land Rover Special Vehicle Operations is only available to members of the Virgin Galactic Future Astronaut community
- Exterior elements include unique Zero Gravity Blue paint inspired by the beautiful effects of the night sky, plus a bespoke Virgin Galactic puddle lamp design
- One-off interior design includes custom cup holder crafted from the spaceship's front landing skid, 'DNA of Flight' logo graphic veneer and aluminium door handles with the Future Astronaut community constellation design
- Land Rover has been working with Virgin Galactic since 2014 as its exclusive automotive partner



Land Rover Special Vehicle Operations has launched a special edition Range Rover which will be available exclusively to Future Astronauts signed up to fly to space with Virgin Galactic.

The Astronaut Edition features distinctive exterior and interior design elements celebrating this once in a lifetime experience and Virgin Galactic's unique community of Future Astronauts. It marks another important milestone in the ongoing partnership between Land Rover and Virgin Galactic, which has been an authentic collaboration since the start.

A unique Zero Gravity Blue paint finish inspired by the depth and intensity of the night sky demonstrates Land Rover Special Vehicle Operations' state-of-the-art technologies and exceptional attention to detail. A bespoke puddle lamp illumination design features the silhouette of Virgin Galactic's SpaceShipTwo while unique Astronaut Edition badging features on the tailgate and side profile finishers.

Inside, the Astronaut Edition features a crafted piece of the spaceship's front landing skid that flew on Virgin Spaceship Unity's first space flight in December 2018. Part of that skid, which provides the spaceship with a highly effective, lightweight braking mechanism, has been re-purposed to form two discs within the cup holders.





One of these references a quote which Richard Branson often makes to his fellow Future Astronauts - 'See you up there' -and the other features the details of the space flight.

Once a Future Astronaut has flown to space, and becomes an astronaut, this will be swapped out with part of the wooden skid from that customer's own spaceflight, personally inscribed with the specific details of a life changing experience.



Further bespoke features include a 'DNA of Flight' graphic on the carbon fibre front console drawer lid and this motif is also debossed onto the leather rear armrest. Solid aluminium metal door handles are engraved with Virgin Galactic's own Future Astronaut community constellation pattern which represents a global community connected by a love of space. This design also features on the rear of the front headrests and metal letterbox panel design above the glovebox. Additional personalisation options include

stitching the Future Astronaut's initials onto the headrests.

**Gerry McGovern, Chief Design Officer, Land Rover, said:** *"Land Rover vehicles have been part of daily life for the Virgin Galactic team since the launch of the partnership in 2014. The Astronaut Edition Range Rover is the next step on this journey and the chance for the Future Astronaut Community to celebrate our two brands' shared values of pioneering spirit and true sense of adventure. This vehicle really will take them Above and Beyond."*

**Stephen Attenborough, Chief Commercial Officer said:** *Land Rover joined Virgin Galactic on its journey to space in 2014 and from the start, the collaboration has been underpinned by iconic design, engineering excellence and desire to push the boundaries of travel for the next generation. The Astronaut Edition has been crafted with that in mind, a meaningful and lasting embodiment of a shared vision. We could not be more excited to be able to offer this unique vehicle to our wonderful, global community of pioneering Future Astronaut customers".*

The Astronaut Edition is based on the luxurious Range Rover Autobiography, where comfort and refinement meet peerless all-terrain capability. In line with both brands' commitment to a sustainable future, the Astronaut Edition is available with Land Rover's P400e plug-in hybrid electric vehicle (PHEV) powertrain, which delivers a combined 404PS, EV range of 42km and CO2 emissions of 72g/km - subject to market availability. A high-performance 5.0-litre V8 P525 supercharged petrol is also offered.









# Award Winner; New Range Rover Evoque Scoops First Industry Accolade



- The new Range Rover Evoque receives its first award at Autocar Magazine's 2019 awards
- World-first Ground View technology honoured by industry experts with 'Innovation Award'
- Additional ClearSight Rear view, Smart Settings and Connected Technologies provide real-world solutions for easy everyday living
- Continuing the 'award winning' lineage of its predecessor, the New Evoque is on sale now

The new Range Rover Evoque has been awarded Autocar Magazine's coveted Innovation Award for its world-first Ground View technology.

The realisation of Land Rover's 2014 'invisible bonnet' concept, ClearSight Ground View uses three forward-facing cameras in the front grille and on the door mirrors and renders an unobstructed 180-degree view of the front of the vehicle onto the central touchscreen.

Helping the driver maintain visibility when negotiating extreme terrains as well as high city-centre kerbs and tight parking spots, this is yet another technological evolution that makes the new Evoque ideal for traversing the urban jungle, the actual jungle and everything in between.

**Mark Tisshaw, Editor, Autocar Magazine, said:** "We are delighted to award Land Rover's 'ClearSight Ground View' with our 2019 Innovation Award. It's a fantastic and truly original piece of technology that can make a real difference to both on and off-road driving. It's another great piece of British innovation from Land Rover, which quietly but consistently adds world-first technology on a more regular basis than most of its peers."



The new Evoque also features ClearSight Rear View which uses a roof-mounted weather-proof Hydrophobic-coated camera to project a high-definition view of the road behind to the rear-view mirror. This technology provides a clear rear view otherwise obscured by rear passengers, but as it doubles the driver's field of vision, it provides 50-degree visibility of the road behind taking other vehicles out of blindspots.

Another first for Land Rover is the introduction of Smart Settings, a system that uses advanced artificial intelligence to learn the driver's habits and remembers their preferred seating position, temperature, media and commonly dialled numbers depending on the time or day of the week. Smart Settings will learn up to eight different user profiles, and by identifying users by their mobile phone, will adapt to the preferences of the driver by recognising which occupant is sitting in the driver's seat.

**Nick Rogers, Executive Director Product Engineering at Jaguar Land Rover, said:** "Land Rover is well known for being the first to bring relevant, pioneering technology to market and we are honoured to be recognised for this particular feature. The new Evoque is a complete transformation, featuring the perfect combination of stunning design together with technology that will make people's lives better in both urban and rural environments. To be recognised by Autocar for this amongst such strong competition is a testament to our design and engineering teams."

More technology available in the new Evoque includes:

- 12.3inch high-definition driver display
- Two high-definition 'hidden until lit' glass touchscreens
- 'InControl Remote' allows drivers to stay in touch with their Evoque by smartphone or smartwatch
- Three 12-volt outlets
- 4G Wifi Hotspot for up to eight devices
- 6 USB points
- Software over the air capability for ultimate convenience





## NEW DISCOVERY SPORT: ENHANCED FOR EVERY FAMILY ADVENTURE

*'Go anywhere' premium compact SUV embodies Land Rover spirit of Discovery*

- **New Discovery Sport:** The world's most versatile compact 5+2 SUV has been updated with the latest user-friendly technology and more efficient, electrified engines
- **Transformed Interior:** Premium cabin delivers great levels of craftsmanship and comfort, while updated exterior enhances distinctive Discovery design
- **Versatile by design:** Practical 5+2 seating enhanced with 40:20:40 second row seats – providing 24 possible seat configurations – offer more flexibility for family adventures
- **Efficient hybrid-electric power:** 48-volt MHEV, four-cylinder Ingenium petrol and diesel engines or 3-cylinder PHEV deliver increased customer choice
- **RDE2 certified:** New Discovery Sport (D150 manual Front-Wheel Drive) certified on more-stringent RDE2 emissions standards – six months ahead of January 2020 introduction- reducing harmful NOx particulates entering the environment
- **Refined capability:** New Premium Transverse Architecture delivers greater comfort and surpasses most stringent global safety requirements
- **Adventures large and small:** Bigger inside with more room for everyone, as well as increased small and large stowage spaces, up to 1,794-litres
- **Technology-enabling capability:** New ClearSight Ground View allows the driver to “see through” the bonnet, while a smart high-definition rear-view mirror transforms rear visibility
- **Go anywhere:** Innovative Terrain Response 2 technology ensures you can wade rivers, climb mountains and explore places other SUVs cannot reach
- **Connected families:** Touch Pro infotainment with Apple CarPlay and Android Auto, wireless charging and 4G WiFi hotspot keeps you and your family connected, informed and entertained everywhere\*
- **Available to order now:** The New Discovery Sport priced from £31,575\*\* in the UK, on sale from 21 May 2019
- **Build your own** vehicle at [www.landrover.co.uk/vehicles/discovery-sport/](http://www.landrover.co.uk/vehicles/discovery-sport/)



Land Rover is about freedom, whether it is everyday adventures on the school run or taking you and your family beyond the road's end, filling your lives with new experiences and discoveries in the great outdoors. The new Discovery Sport, the compact premium SUV, has been transformed to make it more efficient, technologically-advanced and practical, keeping its occupants safe and comfortable in any conditions.

**Rawdon Glover, Managing Director, Jaguar Land Rover UK, said:** *“Discovery Sport has been a stunning sales success for Land Rover, leading the way for the past three years and selling almost one hundred thousand models in the UK to date. The new model combines everything the Discovery family of vehicles embodies with a greater focus on modern life – whether through the new electrified 48-volt MHEV or PHEV powertrains, the latest technologies that keep you connected at all times, or the durable materials used throughout the cabin. The result is a compact seven-seat SUV that caters for every family, in every eventuality.”*



Embracing the adventurous spirit that has defined the Discovery family for the past 30 years, the new Discovery Sport is a striking evolution of the original that does not compromise capability. Demonstrating versatility in a finer form, the spacious, more comfortable and quiet 5+2 interior has been transformed with a completely new infotainment interface and latest connectivity, plus a more flexible seating arrangement with up to 24 combinations. Under the skin, new electrified engines include a 48-volt mild hybrid from launch to help reduce emissions and fuel consumption.

**Gerry McGovern, Land Rover Chief Design Officer, said:** *“Building on the success of the original Discovery Sport, this beautifully proportioned vehicle has been refined, enhancing its characterful exterior which compliments the engaging nature of the interior space.”*

Trademark Discovery design cues, including the clamshell bonnet, rising beltline and tapered roof remain, but the new model is a bold exterior evolution. The proportions have been optimised to project a more striking visual with new signature LED headlamps at the front and rear, alongside an updated front grille and bumpers.



Inside, the standardisation of the digital Touch Pro infotainment system and the introduction of more premium materials throughout transforms the cabin to create a practical, high quality space. New seats across each of the three rows provide improved comfort and versatility, thanks to the second row 40:20:40 split fold and slide functionality, boosting the possible number of seats.

The new Discovery Sport is available in Discovery Sport, S, SE and HSE trim, in addition to the R-Dynamic variants that mark themselves out with unique bumpers, Shadow Atlas script on the bonnet and tailgate, and use of body colour on the side sills and wheel arches. Inside, branded treadplates further differentiate it from the core model.

Discovery Sport's unique versatility has been further enhanced, with improved small item stowage across all rows and a 20 per cent increase in fuel tank capacity (up to 67-litres). With the option of Land Rover's Activity Key, the compact SUV is more usable than ever and designed to take your family further.



Built on Land Rover's latest Premium Transverse Architecture (PTA), the Discovery Sport provides greater versatility and refinement with a new body that is 13 per cent stiffer than its predecessor and, together with rigidly-mounted subframes that reduce noise and vibration intrusion into the cabin, ensures maximum safety in the event of a collision.

Designed with electrification in mind, PTA allows for the introduction of new 48-volt mild hybrid electric vehicle (MHEV)

powertrains on Discovery Sport. First launched

on the new Range Rover Evoque, the system uses an engine-mounted belt-integrated starter generator to harvest energy normally lost during deceleration and stores it in an under-floor battery and is fitted as standard on vehicles with automatic transmissions.

At speeds below 17km/h (11mph), the engine will shut off when the driver applies the brakes, before redeploying the stored energy to assist the engine under acceleration to reduce fuel consumption. The new engine and transmissions are refined, quiet and efficient to drive, ensuring that whether on the school run, a drive into the country or heading to the Alps, they offer notable efficiency savings.

Available across the range of four-cylinder Ingenium petrol and diesel engines, the mild hybrid delivers CO<sub>2</sub> emissions from as low as 144g/km CO<sub>2</sub> (NEDC equivalent) and fuel economy up to 40.9mpg (6.9l/100km) (based on WLTP test procedure). An even more efficient plug-in hybrid electric vehicle (PHEV) variant will also join the range later in 2019.



New Discovery Sport is one of the first in the Land Rover range to offer a Real Driving Emissions stage 2 (RDE2) certified engine, ahead of their mandatory introduction in 2020. By tracking emissions using a real-world on-road test in addition to traditional laboratory measurements, customers can be certain the latest Ingenium diesel engines available on the compact SUV are cleaner and more efficient than ever.

The most efficient Discovery Sport model will be the Front-Wheel Drive 150HP diesel with manual transmission, offering emissions from as low as 140g/km of CO<sub>2</sub> and fuel economy from 47.8mpg (5.9l/100km). To maximise efficiency, All-Wheel Drive (AWD) variants benefit from Driveline Disconnect – a Power Transfer Unit at the front axle that disconnects drive to the rear wheels under steady state cruising, reducing frictional losses and re-engaging AWD in less than 500 milliseconds.



Designed to meet the digital demands of a modern family, the latest Discovery Sport is available with a 'smart rear view mirror' that transforms into a video screen at the flick of a switch to display what is behind the vehicle in crisp high definition. Offering a wider (50-degree) field of vision and superior visibility in low light conditions from a camera mounted above the rear window, the mirror ensures rear visibility is not compromised by second and third row passengers or bulky items in the boot.

Ground View technology has been introduced to help drivers navigate high city centre kerbs or tackle rough terrain by projecting camera imagery that offers a virtual 180-degree view beneath the vehicle onto the touchscreen. Effectively making the bonnet invisible, this is the realisation of Land Rover's Transparent Bonnet technology, first previewed in 2014.

The digital transformation does not stop there. Wireless charging for compatible mobile devices is offered for the first time within the lower centre console, while a 4G WiFi hotspot, and available USB and 12-volt connectivity points on every row, ensure passengers remain charged and connected. Second and third row occupants can also benefit from individual ventilation controls to make the space more comfortable.

For regular drivers of the new Discovery Sport, Smart Settings uses artificial intelligence algorithms to learn driver preferences, adjusting massage and seat positions, music and climate settings and steering column positioning to suit each driver.

The latest Discovery Sport is every inch a Land Rover, combining assured all-terrain handling with all-weather capability, including a wading depth of 600mm, All-Wheel Drive and a second-generation Active Driveline system (engine output dependent). Terrain Response 2 automatically detects the surface and adjusts the torque delivery to best suit the conditions, while Advanced Tow Assist makes reversing with a trailer (up to 2,500kg) more intuitive and safer than ever.

There is a reversing camera as standard on all models, alongside a suite of available advanced driver assistance systems. This includes optional Adaptive Cruise Control with Steering Assist, which centres the vehicle in the lane based on road markings as well as maintaining a safe distance from the vehicle in front. Standard safety features include Lane Keep Assist, Autonomous Emergency Braking and Driver Condition Monitor.

# THE RANGE ROVER FAMILY

After three decades at the top of the luxury SUV sector, the Range Rover became a family in 2005 with the launch of the Range Rover Sport, a vehicle which combines the luxury and capability of the larger Range Rover with a sporty and engaging driving character. In 2010, the compact Range Rover Evoque made its debut, aimed at a younger and more urban customer base. In 2017, the family grew once again with the introduction of the Range Rover Velar, filling the space between the Range Rover Sport and Range Rover Evoque. Taking its name from the first Range Rover prototypes, the Range Rover Velar broadened the Range Rover portfolio with a statement reductionist design and a technology-rich interior.

## RANGE ROVER HISTORICAL OVERVIEW

2020 marks 50 years since the first Range Rover was revealed, but the story goes back even further. During the mid-1960s, in a bid to revolutionise the growing 4x4 leisure market, the Rover car company's engineering chief for new vehicle projects, Charles Spencer 'Spen' King (nephew of the founders of Land Rover), hatched a plan to combine the comfort and on-road ability of a Rover saloon with the off-road ability of a Land Rover.



Development of the first 100-inch station wagon prototype began during the late 1960s, with the first model being released to the world's media to critical acclaim in 1970. Its blend of ability – motorway cruising, off-roading, and even towing in style and comfort – ensured its instant popularity. The original Classic model was cited as an 'exemplary work of industrial design' when it became the first vehicle to be displayed at the world famous Louvre Museum in Paris in 1971.



The first generation Range Rover (1970-1996) was originally only available as a two door when it went on sale in 1970. During its 26 year lifespan the Classic continued to evolve with the introduction of the four-door model in 1981 and an automatic gearbox in 1982. The first diesel Range Rover arrived in 1986.

The second generation Range Rover known as the P38A arrived in 1994 and was instantly recognisable thanks to its familiar silhouette, floating roof, clamshell bonnet, practical split tailgate and continuous waistline; all of which continue to this day. The vehicle also displayed an even more luxurious interior without compromising on its on-road ability and off-road capability. It also featured enhanced height-adjustable suspension as well as a 2.5-litre diesel and 3.9 and 4.6-litre versions of the V8 petrol, providing greater performance than ever before.

The third generation Range Rover (2001-2012) delivered a wealth of improvements on all predecessors during its 11 year period. Engineering innovations included a stiffer monocoque body (replacing the traditional 4x4 ladder frame) and fully independent suspension with interconnected air springs (at the time nearly all 4x4s had rigid axles). The interiors of these vehicles were inspired by high-end yachts, fine furniture and first class airline seats, providing more space and luxury.

In 2012, the fourth generation and most recent Range Rover debuted. It was the first SUV to feature lightweight all-aluminium construction, saving 420kg in weight compared to its predecessor. Featuring a wealth of new off-road innovations such as automatic Terrain Response™ 2 and All-Terrain Progress Control, it has evolved to include efficient new electrified Ingenium engines, a plug-in hybrid electric version and innovative infotainment and safety technologies.

For the last five years the Range Rover SVAutobiography has been at the pinnacle of the model line-up, with the most powerful and refined vehicles in Range Rover's history. Produced by Land Rover's Special Vehicle Operations division, customers can also choose from the Range Rover SVAutobiography and SVAutobiography Dynamic – which feature powerful V8 engines and finely crafted cabins.



### Range Rover World Firsts

- 1971** Range Rover becomes the first vehicle to be displayed at the Louvre museum in Paris
- 1972** The Range Rover is the first vehicle to cross the Darién Gap
- 1979** A specially modified Range Rover wins the inaugural Paris-Dakar rally
- 1985** Diesel-powered Range Rover 'Bullet' breaks 27 speed records
- 1989** Range Rover is the world's first 4x4 to be fitted with ABS anti-lock brakes
- 1992** Range Rover is the world's first 4x4 to be fitted with electronic traction control (ETC)
- 1992** Range Rover is the world's first 4x4 to be fitted with automatic electronic air suspension
- 2009** Range Rover debuts Adaptive Dynamics system to continually optimise body & ride control
- 2012** Fourth-generation Range Rover is world's first all-aluminium SUV
- 2014** All-Terrain Progress Control (ATPC) debuts on Range Rover and Range Rover Sport



# Land Rover photos, just because they're too good not to use...



Above; The 1,000,000 Discovery on the Silk Road to China for "The Journey of Discovery"

Below; Discovery family history





**Nottinghamshire 4x4 Response** is affiliated to the 4x4 Response UK Group, a registered charity made up of similar groups of trained, insured and capable volunteers across the UK. We offer assistance as required and can be called upon by the Police, Ambulance, Doctors and local authorities. This is often in extraordinary circumstances – when there is extensive snow or flooding for example when the capabilities of the members' 4x4 vehicles are needed. Most recently, a call for help was nothing to do with wading through floods or reaching people stranded by snow. Members responded to a call from local NHS services to assist in delivering Personal Protective Equipment over a number of weeks as part of the response to the covid-19 pandemic.

Whilst the group is most commonly called on for help in the winter months, we keep ourselves busy all year round with support to charitable organisations during the quieter months assisting with marshalling and other logistics.

We train together through both live exercises and table-top simulations. The live exercises are particularly invaluable to identify areas for improvements and to ensure the group is prepared and capable to respond to a variety of incidents across the geography. The most recent event led to a large scale upgrade of our communication systems to ensure members can be in touch with controllers at all stages of a "shout" – critically important when conditions are poor.

Members of the group own a huge variety of vehicles – some with every modification in the book (and more on top!) and many just as they left the factory. Not all are 4x4. What we share is a willingness to assist in times of need. That assistance isn't all about hitting the road either. We could not operate without our team of controllers and other members give their time to manage the finances, manage group membership, coordinate meetings and events and write articles for magazines!!

We are ready to welcome new members to the group and invite you to get in touch with us if you would like more information. [membership@notts4x4response.uk](mailto:membership@notts4x4response.uk)



Tel: 07763740294 & leave a message Email: [Chairman@notts4x4response.uk](mailto:Chairman@notts4x4response.uk) Website: [www.notts4x4response.uk](http://www.notts4x4response.uk)

## SOME FINAL THOUGHTS FROM THE TEAM

**Thank you for taking the time to read this second test issue of our new Land Rover magazine, the next one will be for real with up to date news from Land Rover.**

**Any company that wishes to see their products included in the magazine, please feel free to send your press release copy to us. All must be Land Rover related of course, that's all we ask for. Also ask about our advertising rates if you're willing to help us. The first two sponsors will get free banner adverts on our web site for a year and one free advert in the magazine.**

**We will only have two rules;**

- **No committees / membership fees / joining fees / or limits on numbers of downloads**
- ***There will never be any charge* for Landynews readers (Donations are always more than welcome though)**



**landynewseditors@gmail.com**



RANGE ROVER VELAR NAMED SUV OF THE YEAR 2018  
AT THE NEWS UK MOTORING AWARDS

