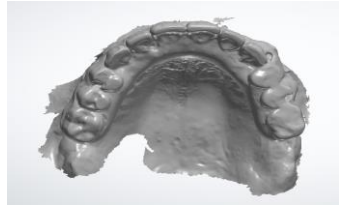


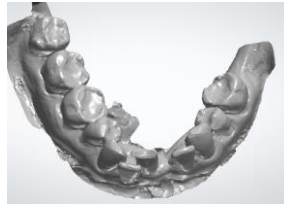
# 100% Digital Workflow Scans for All on X Cases

1: Full upper, lower, and bite scan with temps in picking up temps and tissue

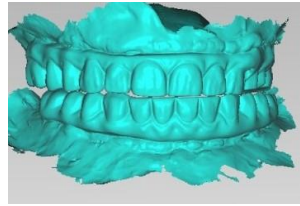
(This can be a 360 scan of a denture with a fresh Wash or Softline, so it matches the tissue scan) you can send a 360 scan of the temp if you want to copy it.



Upper

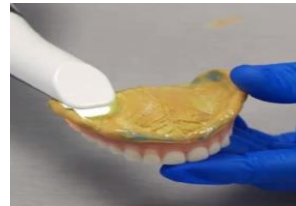


Lower



Bite

OR



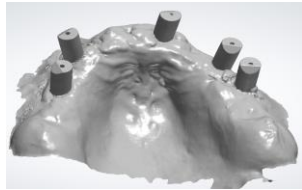
360 Denture scan



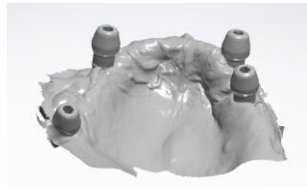
Bite

2: Tissue scans with scan bodies (contact the lab for which scan bodies are needed)

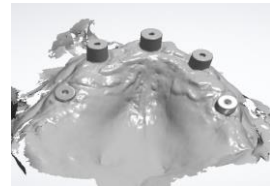
(if you are not using Photogrammetry or Grammetry you will need to scan the scan bodies three separate times so the scan can be overlaid to confirm implant placement)



Elos



Multiunit Scancaps



iCam Refs



Dess

& more

3: Photogrammetry (iCam, PIC, MicronMapper, Tupel 3D) or Grammetry (Optisplint & others) of the implants

(Regular scan bodies will need 3 separate scan of the tissue and scan bodies making sure they are not a copy of one scan) I will overlay all 3 scans to confirm implant placement.



iCam



PIC

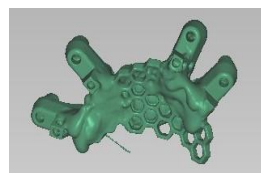


MicronMapper

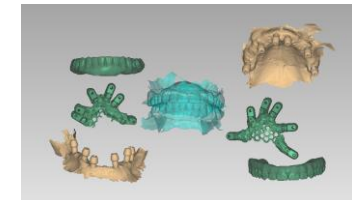
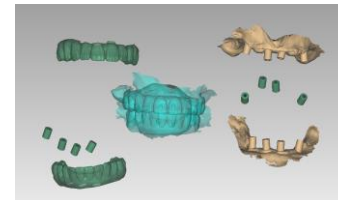


Tupel 3D

OR



Optisplint



4: All the scans will be stacked at the lab and a final temp will be returned before Zirconia final is made