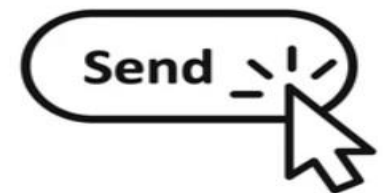
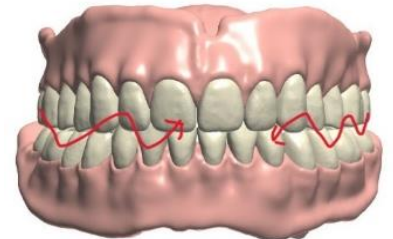
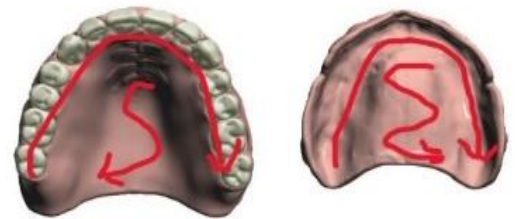


## DIGITAL SCANNING FOR DENTURES

### Single Arch:

1. In the old Denture or Bite rim take a light to medium wash  
(Soft liner will work also, you may just need to use some indicating spray)
2. Have the patient close into a light bite till the wash is set up and the bite has been verified.
3. Scan the Denture 360, starting with scanning the intaglio surface then roll the Denture over to scan the teeth  
(You can do the scans in your hand or on the desk)
4. Scan the opposing arch
5. After both scans have been checked and cleaned proceed to scan the bite. place the Denture back in the patient's mouth. You can do a bite registration or just have the patient bite together making sure the bite stays closed
6. Check the bite scan to make sure the patient did not open as you were scanning the bite
7. After verifying that the bite is correct, and all the scans have been cleaned.  
(Turning off the color on the scans will help) You now can send the case to the lab



### Double Arch:

- Start with the upper arch making sure the midline and bite is correct  
Repeat the steps 1 and 2 for the lower arch

### Copy Denture:

1. In the old Denture or Bite rim take a light to medium wash  
(Soft liner will work also, you may just need to use indicating spray)
  2. Have the patient close into a light bite till the wash is set up and the bite has been verified
  3. Scan the Denture 360, starting with scanning the intaglio surface then roll the Denture over to scan the teeth  
(You can do the scans in your hand or on the desk)
- No opposing or bite scan needed this will be a copy of what the Denture is now

